

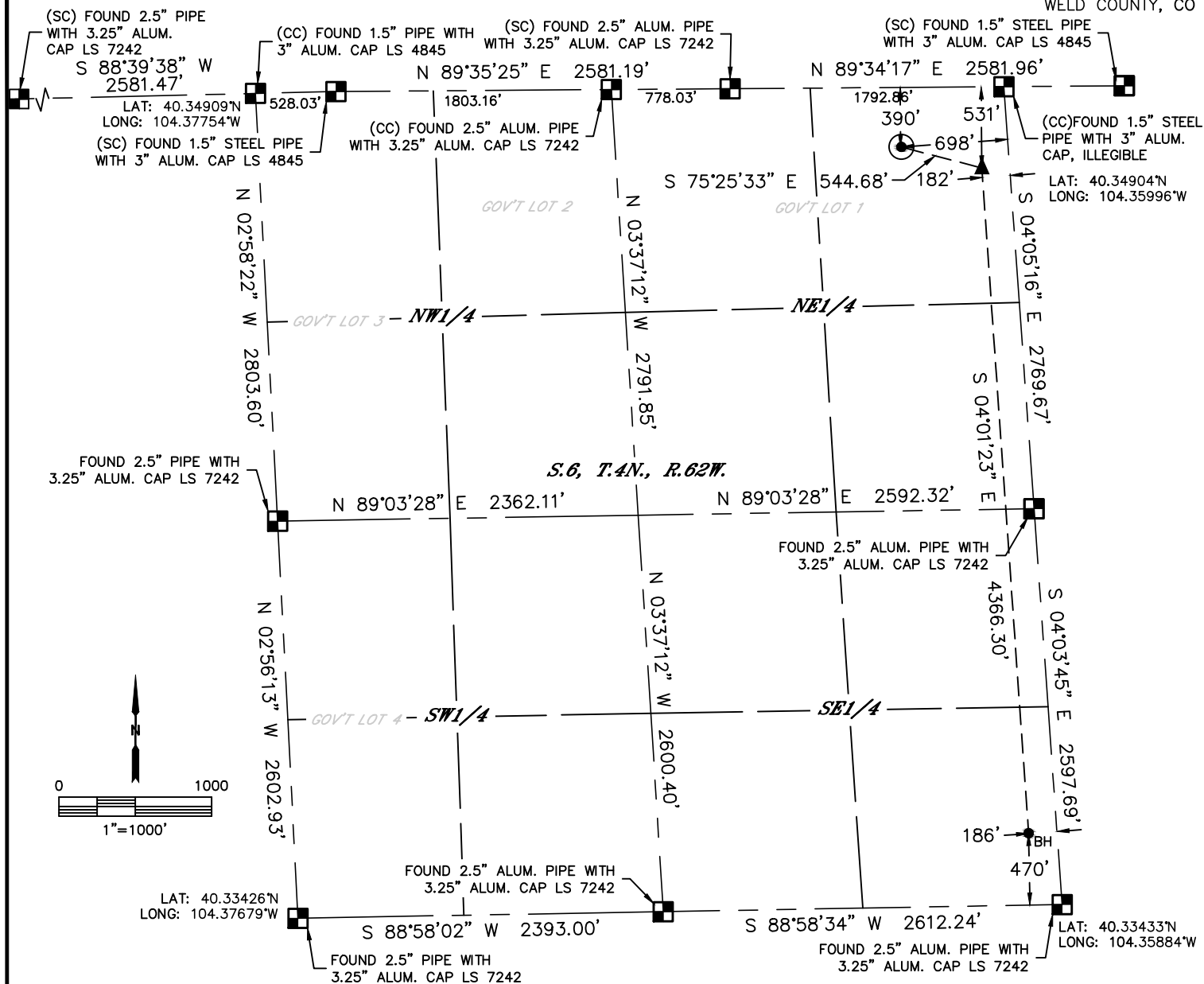


Lat40°, Inc. 6250 W. 10th Street, Unit 2, Greeley, CO 970-515-5294

# WELL LOCATION CERTIFICATE

STATE SEVENTY HOLES U41-Y44-6HNC

SECTION: 6  
TOWNSHIP: 4N  
RANGE: 62W  
6TH. P.M.  
WELD COUNTY, CO



CLIENT: BONANZA CREEK ENERGY				LANDMAN: STEVE MCPHERSON			
INSTRUMENT OPERATOR: ADAM BEAUPREZ				SURVEY DATE: 11/17/2014			
SURFACE USE: RANGELAND							
SHL FOOTAGE	SHL LAT°	SHL LONG°	SHL PDOP	SHL ELEV	SHL 1/4/1/4	SHL S-T-R	
390 FNL 698 FEL	40.34798	-104.36238	1.7	4544	NENE	6-4-62	

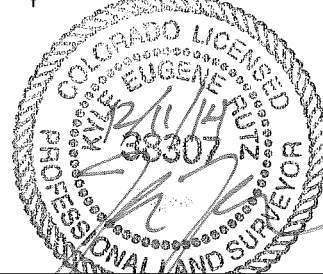
BHL FOOTAGE	BHL LAT°	BHL LONG°	BHL S-T-R	EP LAT°	EP LONG°	EP S-T-R
470 FSL 186 FEL	40.33562	-104.35960	6-4-62	40.34758	-104.36050	6-4-62

NEAREST CULTURAL ITEMS	
BUILDING	+5280'
BUILDING UNIT	+5280'
HIGH OCCUPANCY BUILDING UNIT	+5280'
DESIGNATED OUTSIDE ACTIVITY AREA	+5280'
PUBLIC ROAD	+5280'
ABOVE GROUND UTILITY	±2586' SW
RAILROAD	+5280'
PROPERTY LINE	±390' N

## NOTE:

- 1) Bearings shown are Grid Bearings of the Colorado State Plane Coordinate System, North Zone, North American Datum 1983. The lineal dimensions as contained herein are based upon the "U.S. Survey Foot."
- 2) Distances to section lines measured at 90 degrees from said section lines.
- 3) Ground elevations are based on an observed GPS elevation (NAVD 1988 DATUM).
- 4) Latitude and Longitude shown are (NAD 83 DATUM).
- 5) IMPROVEMENTS: See LOCATION DRAWING for all visible improvements within 500' of disturbed area.
- 6) This map does not represent a boundary survey.

- LEGEND
- = ALIQUOT MONUMENT AS DESCRIBED
  - = CALCULATED POSITION
  - = SURFACE HOLE LOCATION (SHL)
  - ▲ = ENTRY POINT LOCATION (EP)
  - BH = BOTTOM HOLE LOCATION (BHL)
  - ⊕ = EXISTING WELL
  - ⊖ = ABANDONED WELL



Kyle E. Rutz On Behalf of Lat40°, Inc.  
Colorado Licensed Professional Land Surveyor No. 38307  
DATE: 12/3/2014  
PROJECT#: 2014214