

BONANZA CREEK ENERGY INC.

WELD COUNTY, COLORADO (NAD 83)

NE NE SEC. 6 T4N R62W 6th P.M.

STATE SEVENTY HOLES P41-T44-6HNC

ORIGINAL WELLBORE

21 December, 2014

Plan: PROPOSAL #1





Project: WELD COUNTY, COLORADO (NAD 83)
Site: NE NE SEC. 6 T4N R62W 6th P.M.
Well: STATE SEVENTY HOLES P41-T44-6HNC
Wellbore: ORIGINAL WELLBORE
Design: PROPOSAL #1

ANNOTATIONS

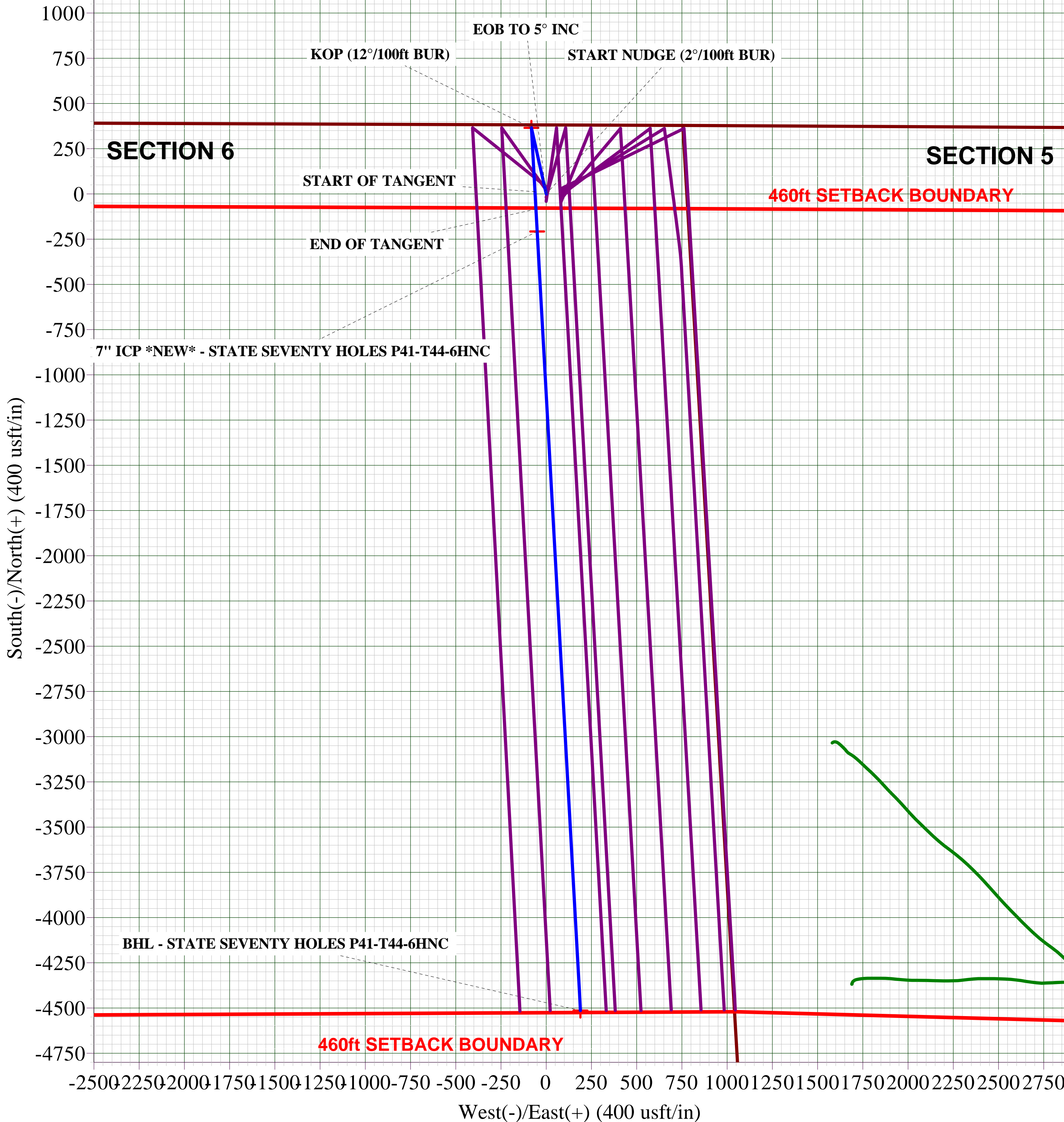
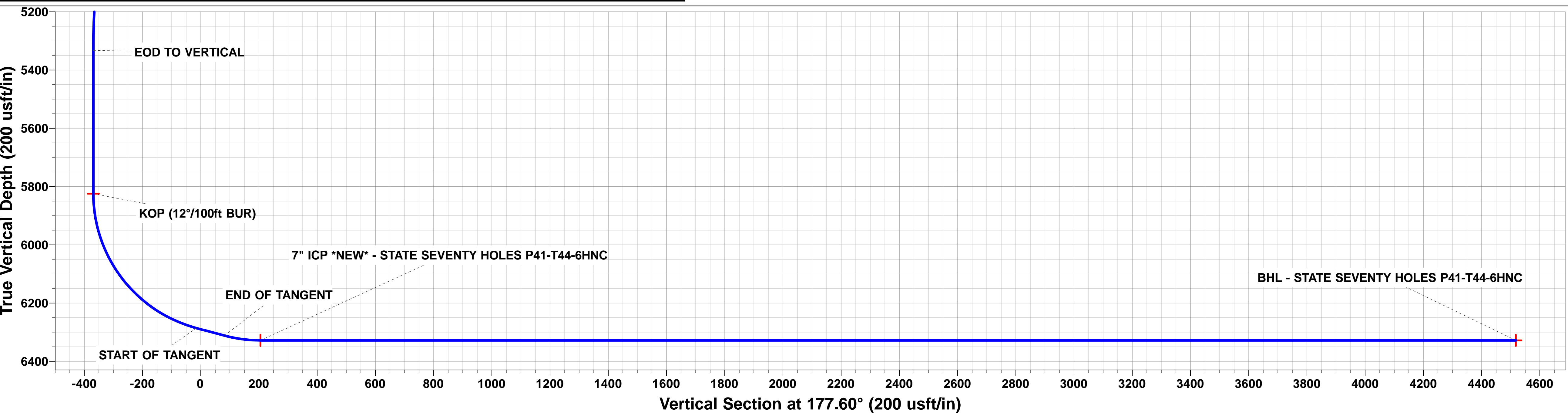
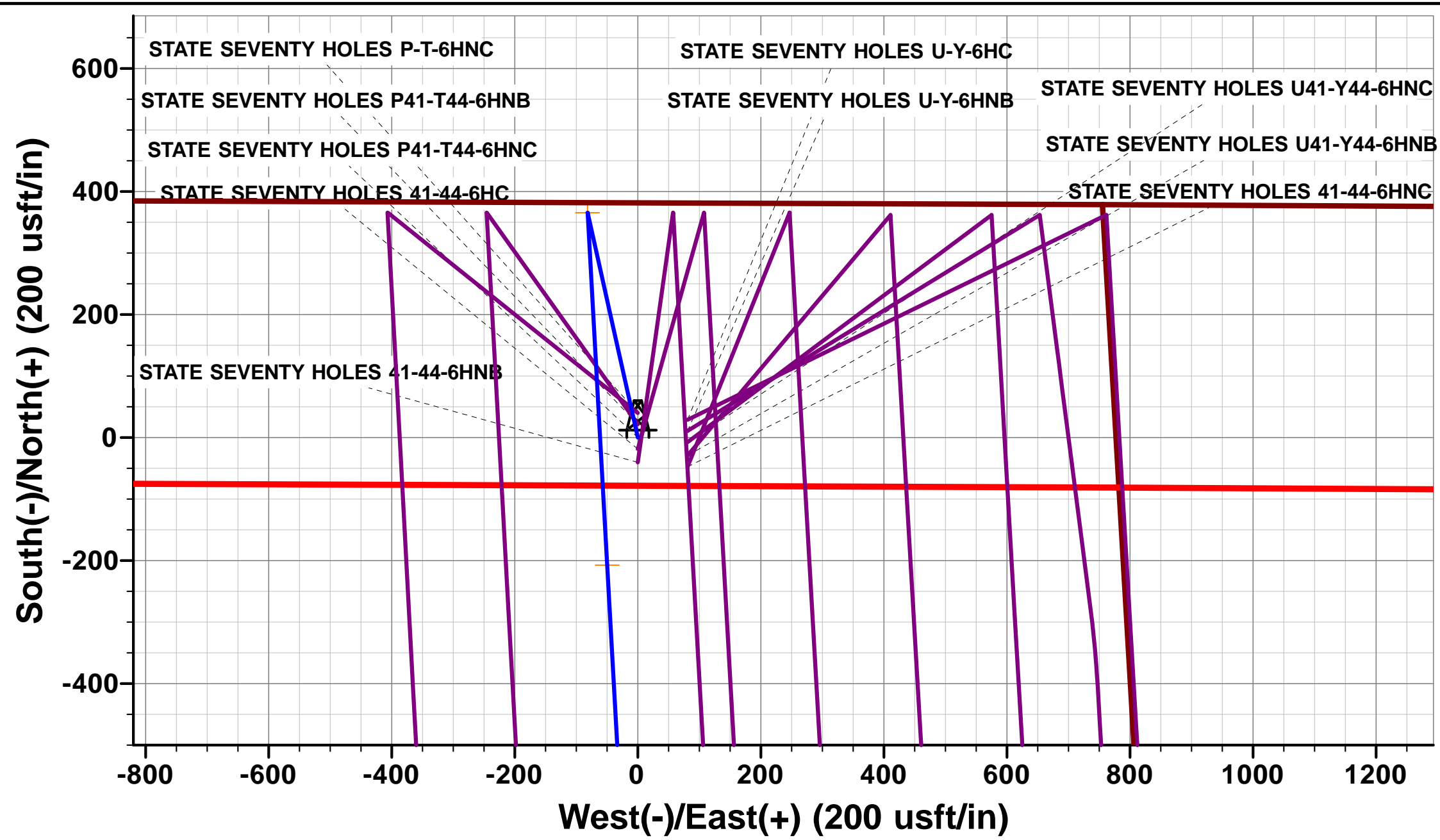
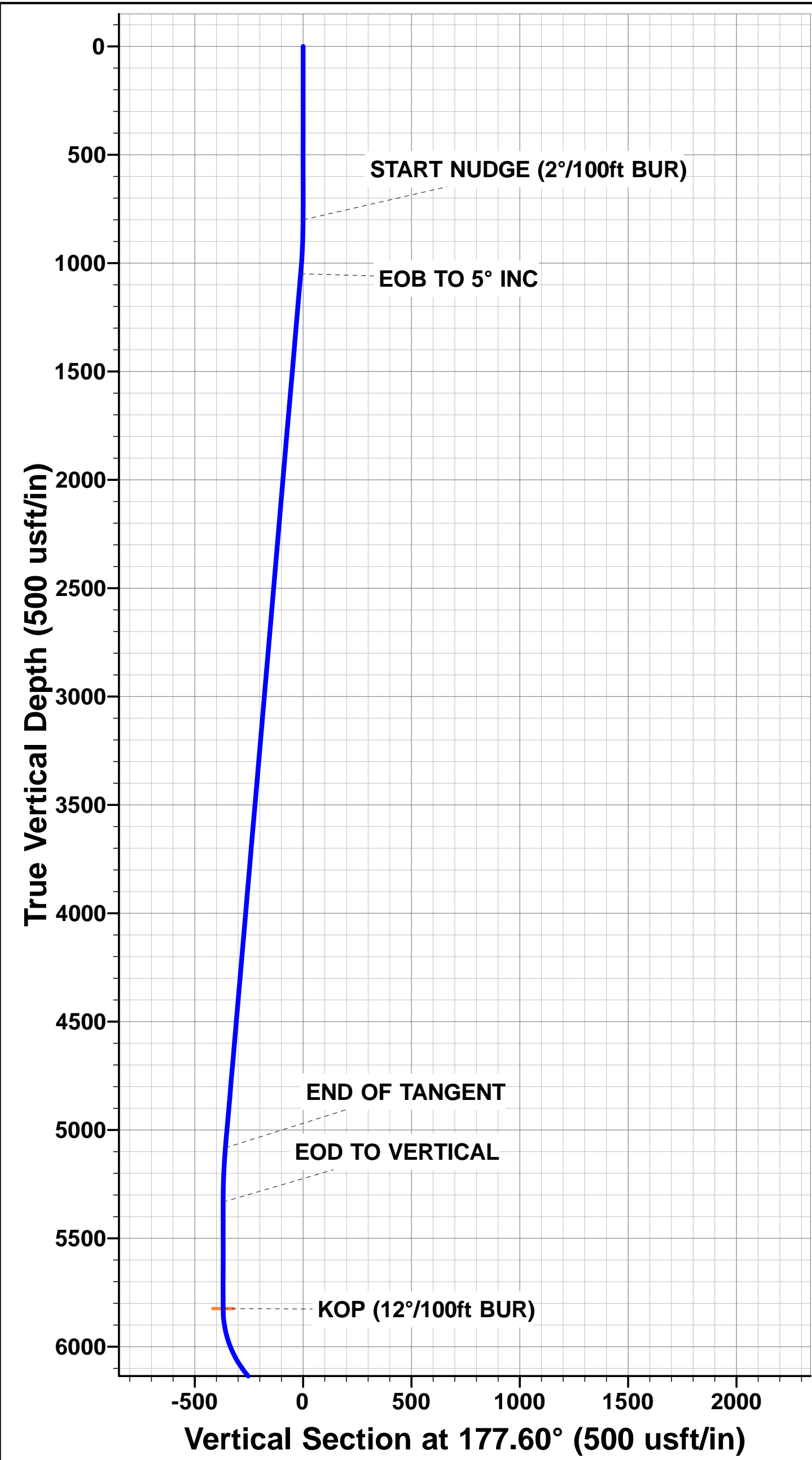
TVD	MD	Inc	Azi	+N/-S	+E/-W	VSec	Dep	Annotation
800.0	800.0	0.00	0.00	0.0	0.0	0.0	0.0	START NUDGE (2°/100ft BUR)
1049.8	1050.1	5.00	347.42	10.6	-2.4	-10.7	10.9	EOB TO 5° INC
5082.9	5098.7	5.00	347.42	355.2	-79.2	-358.2	363.9	END OF TANGENT
5332.7	5348.8	0.00	0.00	365.8	-81.6	-368.9	374.8	EOD TO VERTICAL
5824.7	5840.8	0.00	0.00	365.8	-81.6	-368.9	374.8	KOP (12°/100ft BUR)
6285.9	6465.8	75.00	176.82	12.5	-62.0	-15.0	728.7	START OF TANGENT
6311.8	6565.8	75.00	176.82	-84.0	-56.6	81.5	825.3	END OF TANGENT
6328.0	6690.8	90.00	176.82	-207.4	-49.8	205.1	948.8	7" ICP *NEW* - STATE SEVENTY HOLES P41-T44-6HNC
6328.0	11003.8	90.00	176.82	-4513.8	189.6	4517.7	5261.9	BHL - STATE SEVENTY HOLES P41-T44-6HNC

PROPOSED LOCAL COORDINATES:

SHL: 380ft FNL & 777ft FEL Sec 6
7" ICP *NEW*: 589ft FNL & 838ft FEL Sec 6
BHL: 470ft FSL & 851ft FEL Sec 6

WELLBORE TARGET DETAILS (LAT/LONG)

Name	TVD	+N/-S	+E/-W	Latitude	Longitude
KOP - STATE SEVENTY HOLES P41-T44-6HNC	5824.7	365.8	-81.6	40.349004	-104.362963
7" ICP *NEW* - STATE SEVENTY HOLES P41-T44-6HNC	6328.0	-207.4	-49.8	40.347431	-104.362849
BHL - STATE SEVENTY HOLES P41-T44-6HNC	6328.0	-4513.8	189.6	40.335610	-104.361990



Planning Report



Database:	EDM 5000.1 Single User Db	Local Co-ordinate Reference:	Well STATE SEVENTY HOLES P41-T44-6HNC
Company:	BONANZA CREEK ENERGY INC.	TVD Reference:	KB-EST @ 4558.0usft (Original Well Elev)
Project:	WELD COUNTY, COLORADO (NAD 83)	MD Reference:	KB-EST @ 4558.0usft (Original Well Elev)
Site:	NE NE SEC. 6 T4N R62W 6th P.M.	North Reference:	True
Well:	STATE SEVENTY HOLES P41-T44-6HNC	Survey Calculation Method:	Minimum Curvature
Wellbore:	ORIGINAL WELLBORE		
Design:	PROPOSAL #1		

Project	WELD COUNTY, COLORADO (NAD 83)		
Map System:	US State Plane 1983	System Datum:	Mean Sea Level
Geo Datum:	North American Datum 1983		
Map Zone:	Colorado Northern Zone		Using geodetic scale factor

Site	NE NE SEC. 6 T4N R62W 6th P.M.				
Site Position:		Northing:	1,371,680.11 usft	Latitude:	40.348080
From:	Lat/Long	Easting:	3,317,072.91 usft	Longitude:	-104.362380
Position Uncertainty:	0.0 usft	Slot Radius:	1.10000ft	Grid Convergence:	0.74 °

Well	STATE SEVENTY HOLES P41-T44-6HNC					
Well Position	+N/-S	-29.2 usft	Northing:	1,371,649.93 usft	Latitude:	40.348000
	+E/-W	-80.8 usft	Easting:	3,316,992.46 usft	Longitude:	-104.362670
Position Uncertainty		0.0 usft	Wellhead Elevation:	usft	Ground Level:	4,541.0 usft

Wellbore	ORIGINAL WELLBORE				
Magnetics	Model Name	Sample Date	Declination (°)	Dip Angle (°)	Field Strength (nT)
	IGRF2010	21/12/2014	8.17	66.95	52,777

Design	PROPOSAL #1				
Audit Notes:					
Version:	Phase:	PROTOTYPE	Tie On Depth:	0.0	
Vertical Section:	Depth From (TVD) (usft)	+N/-S (usft)	+E/-W (usft)	Direction (°)	
	6,328.0	0.0	0.0	177.60	

Plan Sections											
MD (usft)	Inc (°)	Azi (°)	Vertical Depth	SS (usft)	+N/-S (usft)	+E/-W (usft)	Dogleg Rate (°/100usft)	Build Rate (°/100usft)	Turn Rate (°/100usft)	TFO (°)	Target
0.0	0.00	0.00	0.0	-4,558.0	0.0	0.0	0.00	0.00	0.00	0.00	
800.0	0.00	0.00	800.0	-3,758.0	0.0	0.0	0.00	0.00	0.00	0.00	
1,050.1	5.00	347.42	1,049.8	-3,508.2	10.6	-2.4	2.00	2.00	0.00	347.42	
5,098.7	5.00	347.42	5,082.9	524.9	355.2	-79.2	0.00	0.00	0.00	0.00	
5,348.8	0.00	0.00	5,332.7	774.7	365.8	-81.6	2.00	-2.00	0.00	180.00	
5,840.8	0.00	0.00	5,824.7	1,266.7	365.8	-81.6	0.00	0.00	0.00	0.00	KOP - STATE SEVI
6,465.8	75.00	176.82	6,285.9	1,727.9	12.5	-62.0	12.00	12.00	0.00	176.82	
6,565.8	75.00	176.82	6,311.8	1,753.8	-84.0	-56.6	0.00	0.00	0.00	0.00	
6,690.8	90.00	176.82	6,328.0	1,770.0	-207.4	-49.8	12.00	12.00	0.00	0.00	
11,003.8	90.00	176.82	6,328.0	1,770.0	-4,513.8	189.6	0.00	0.00	0.00	-57.51	BHL - STATE SEVE

Planning Report



Database:	EDM 5000.1 Single User Db	Local Co-ordinate Reference:	Well STATE SEVENTY HOLES P41-T44-6HNC
Company:	BONANZA CREEK ENERGY INC.	TVD Reference:	KB-EST @ 4558.0usft (Original Well Elev)
Project:	WELD COUNTY, COLORADO (NAD 83)	MD Reference:	KB-EST @ 4558.0usft (Original Well Elev)
Site:	NE NE SEC. 6 T4N R62W 6th P.M.	North Reference:	True
Well:	STATE SEVENTY HOLES P41-T44-6HNC	Survey Calculation Method:	Minimum Curvature
Wellbore:	ORIGINAL WELLBORE		
Design:	PROPOSAL #1		

Planned Survey

MD (usft)	Inc (°)	Azi (°)	TVD (usft)	SS (usft)	+N/-S (usft)	+E/-W (usft)	Vertical Section (usft)	Dogleg Rate (°/100usft)	Build Rate (°/100usft)	Turn Rate (°/100usft)
0.0	0.00	0.00	0.0	4,558.00	0.0	0.0	0.0	0.00	0.00	0.00
100.0	0.00	0.00	100.0	4,458.00	0.0	0.0	0.0	0.00	0.00	0.00
200.0	0.00	0.00	200.0	4,358.00	0.0	0.0	0.0	0.00	0.00	0.00
300.0	0.00	0.00	300.0	4,258.00	0.0	0.0	0.0	0.00	0.00	0.00
400.0	0.00	0.00	400.0	4,158.00	0.0	0.0	0.0	0.00	0.00	0.00
500.0	0.00	0.00	500.0	4,058.00	0.0	0.0	0.0	0.00	0.00	0.00
600.0	0.00	0.00	600.0	3,958.00	0.0	0.0	0.0	0.00	0.00	0.00
700.0	0.00	0.00	700.0	3,858.00	0.0	0.0	0.0	0.00	0.00	0.00
START NUDGE (2°/100ft BUR)										
800.0	0.00	0.00	800.0	3,758.00	0.0	0.0	0.0	0.00	0.00	0.00
900.0	2.00	347.42	900.0	3,658.02	1.7	-0.4	-1.7	2.00	2.00	0.00
1,000.0	4.00	347.42	999.8	3,558.16	6.8	-1.5	-6.9	2.00	2.00	0.00
EOB TO 5° INC										
1,050.1	5.00	347.42	1,049.8	3,508.23	10.6	-2.4	-10.7	2.00	2.00	0.00
1,100.0	5.00	347.42	1,099.5	3,458.51	14.9	-3.3	-15.0	0.00	0.00	0.00
1,200.0	5.00	347.42	1,199.1	3,358.89	23.4	-5.2	-23.6	0.00	0.00	0.00
1,300.0	5.00	347.42	1,298.7	3,259.27	31.9	-7.1	-32.2	0.00	0.00	0.00
1,400.0	5.00	347.42	1,398.4	3,159.65	40.4	-9.0	-40.8	0.00	0.00	0.00
1,500.0	5.00	347.42	1,498.0	3,060.03	48.9	-10.9	-49.3	0.00	0.00	0.00
1,600.0	5.00	347.42	1,597.6	2,960.41	57.4	-12.8	-57.9	0.00	0.00	0.00
1,700.0	5.00	347.42	1,697.2	2,860.79	66.0	-14.7	-66.5	0.00	0.00	0.00
1,800.0	5.00	347.42	1,796.8	2,761.17	74.5	-16.6	-75.1	0.00	0.00	0.00
1,900.0	5.00	347.42	1,896.4	2,661.55	83.0	-18.5	-83.7	0.00	0.00	0.00
2,000.0	5.00	347.42	1,996.1	2,561.93	91.5	-20.4	-92.3	0.00	0.00	0.00
2,100.0	5.00	347.42	2,095.7	2,462.32	100.0	-22.3	-100.8	0.00	0.00	0.00
2,200.0	5.00	347.42	2,195.3	2,362.70	108.5	-24.2	-109.4	0.00	0.00	0.00
2,300.0	5.00	347.42	2,294.9	2,263.08	117.0	-26.1	-118.0	0.00	0.00	0.00
2,400.0	5.00	347.42	2,394.5	2,163.46	125.5	-28.0	-126.6	0.00	0.00	0.00
2,500.0	5.00	347.42	2,494.2	2,063.84	134.0	-29.9	-135.2	0.00	0.00	0.00
2,600.0	5.00	347.42	2,593.8	1,964.22	142.5	-31.8	-143.7	0.00	0.00	0.00
2,700.0	5.00	347.42	2,693.4	1,864.60	151.0	-33.7	-152.3	0.00	0.00	0.00
2,800.0	5.00	347.42	2,793.0	1,764.98	159.6	-35.6	-160.9	0.00	0.00	0.00
2,900.0	5.00	347.42	2,892.6	1,665.36	168.1	-37.5	-169.5	0.00	0.00	0.00
3,000.0	5.00	347.42	2,992.3	1,565.74	176.6	-39.4	-178.1	0.00	0.00	0.00
3,100.0	5.00	347.42	3,091.9	1,466.12	185.1	-41.3	-186.6	0.00	0.00	0.00
3,200.0	5.00	347.42	3,191.5	1,366.50	193.6	-43.2	-195.2	0.00	0.00	0.00
3,300.0	5.00	347.42	3,291.1	1,266.88	202.1	-45.1	-203.8	0.00	0.00	0.00
3,400.0	5.00	347.42	3,390.7	1,167.27	210.6	-47.0	-212.4	0.00	0.00	0.00
3,500.0	5.00	347.42	3,490.4	1,067.65	219.1	-48.9	-221.0	0.00	0.00	0.00
3,600.0	5.00	347.42	3,590.0	968.03	227.6	-50.8	-229.6	0.00	0.00	0.00
3,700.0	5.00	347.42	3,689.6	868.41	236.1	-52.7	-238.1	0.00	0.00	0.00
3,800.0	5.00	347.42	3,789.2	768.79	244.6	-54.6	-246.7	0.00	0.00	0.00
3,900.0	5.00	347.42	3,888.8	669.17	253.2	-56.5	-255.3	0.00	0.00	0.00
4,000.0	5.00	347.42	3,988.4	569.55	261.7	-58.4	-263.9	0.00	0.00	0.00
4,100.0	5.00	347.42	4,088.1	469.93	270.2	-60.3	-272.5	0.00	0.00	0.00
4,200.0	5.00	347.42	4,187.7	370.31	278.7	-62.2	-281.0	0.00	0.00	0.00
4,300.0	5.00	347.42	4,287.3	270.69	287.2	-64.1	-289.6	0.00	0.00	0.00
4,400.0	5.00	347.42	4,386.9	171.07	295.7	-66.0	-298.2	0.00	0.00	0.00
4,500.0	5.00	347.42	4,486.5	71.45	304.2	-67.9	-306.8	0.00	0.00	0.00
4,600.0	5.00	347.42	4,586.2	-28.17	312.7	-69.8	-315.4	0.00	0.00	0.00
4,700.0	5.00	347.42	4,685.8	-127.78	321.2	-71.7	-324.0	0.00	0.00	0.00
4,800.0	5.00	347.42	4,785.4	-227.40	329.7	-73.6	-332.5	0.00	0.00	0.00
4,900.0	5.00	347.42	4,885.0	-327.02	338.2	-75.5	-341.1	0.00	0.00	0.00

Planning Report



Database:	EDM 5000.1 Single User Db	Local Co-ordinate Reference:	Well STATE SEVENTY HOLES P41-T44-6HNC
Company:	BONANZA CREEK ENERGY INC.	TVD Reference:	KB-EST @ 4558.0usft (Original Well Elev)
Project:	WELD COUNTY, COLORADO (NAD 83)	MD Reference:	KB-EST @ 4558.0usft (Original Well Elev)
Site:	NE NE SEC. 6 T4N R62W 6th P.M.	North Reference:	True
Well:	STATE SEVENTY HOLES P41-T44-6HNC	Survey Calculation Method:	Minimum Curvature
Wellbore:	ORIGINAL WELLBORE		
Design:	PROPOSAL #1		

Planned Survey

MD (usft)	Inc (°)	Azi (°)	TVD (usft)	SS (usft)	+N/-S (usft)	+E/-W (usft)	Vertical Section (usft)	Dogleg Rate (°/100usft)	Build Rate (°/100usft)	Turn Rate (°/100usft)
5,000.0	5.00	347.42	4,984.6	-426.64	346.8	-77.4	-349.7	0.00	0.00	0.00
END OF TANGENT										
5,098.7	5.00	347.42	5,082.9	-524.93	355.2	-79.2	-358.2	0.00	0.00	0.00
5,100.0	4.98	347.42	5,084.3	-526.26	355.3	-79.3	-358.3	2.00	-2.00	0.00
5,200.0	2.98	347.42	5,184.0	-626.02	362.0	-80.8	-365.1	2.00	-2.00	0.00
5,300.0	0.98	347.42	5,284.0	-725.95	365.4	-81.5	-368.5	2.00	-2.00	0.00
EOD TO VERTICAL										
5,348.8	0.00	0.00	5,332.7	-774.70	365.8	-81.6	-368.9	2.00	-2.00	0.00
5,400.0	0.00	0.00	5,383.9	-825.95	365.8	-81.6	-368.9	0.00	0.00	0.00
5,500.0	0.00	0.00	5,483.9	-925.95	365.8	-81.6	-368.9	0.00	0.00	0.00
5,600.0	0.00	0.00	5,583.9	-1,025.95	365.8	-81.6	-368.9	0.00	0.00	0.00
5,700.0	0.00	0.00	5,683.9	-1,125.95	365.8	-81.6	-368.9	0.00	0.00	0.00
5,800.0	0.00	0.00	5,783.9	-1,225.95	365.8	-81.6	-368.9	0.00	0.00	0.00
KOP (12°/100ft BUR)										
5,840.8	0.00	0.00	5,824.7	-1,266.70	365.8	-81.6	-368.9	0.00	0.00	0.00
5,900.0	7.11	176.82	5,883.8	-1,325.80	362.1	-81.4	-365.2	12.00	12.00	0.00
6,000.0	19.11	176.82	5,981.0	-1,423.01	339.5	-80.1	-342.6	12.00	12.00	0.00
6,100.0	31.11	176.82	6,071.4	-1,513.40	297.2	-77.8	-300.2	12.00	12.00	0.00
6,200.0	43.11	176.82	6,151.0	-1,593.00	237.1	-74.4	-240.0	12.00	12.00	0.00
6,300.0	55.11	176.82	6,216.3	-1,658.34	161.8	-70.3	-164.6	12.00	12.00	0.00
6,400.0	67.11	176.82	6,264.6	-1,706.57	74.5	-65.4	-77.2	12.00	12.00	0.00
START OF TANGENT										
6,465.8	75.00	176.82	6,285.9	-1,727.90	12.5	-62.0	-15.0	12.00	12.00	0.00
6,500.0	75.00	176.82	6,294.8	-1,736.76	-20.6	-60.1	18.0	0.00	0.00	0.00
END OF TANGENT										
6,565.8	75.00	176.82	6,311.8	-1,753.78	-84.0	-56.6	81.5	0.00	0.00	0.00
6,600.0	79.11	176.82	6,319.4	-1,761.45	-117.3	-54.8	114.9	12.00	12.00	0.00
7" ICP *NEW* - STATE SEVENTY HOLES P41-T44-6HNC										
6,690.8	90.00	176.82	6,328.0	-1,770.05	-207.4	-49.8	205.1	12.00	12.00	0.00
6,700.0	90.00	176.82	6,328.0	-1,770.05	-216.6	-49.2	214.4	0.00	0.00	0.00
6,800.0	90.00	176.82	6,328.0	-1,770.05	-316.5	-43.7	314.3	0.00	0.00	0.00
6,900.0	90.00	176.82	6,328.0	-1,770.05	-416.3	-38.1	414.3	0.00	0.00	0.00
7,000.0	90.00	176.82	6,328.0	-1,770.05	-516.1	-32.6	514.3	0.00	0.00	0.00
7,100.0	90.00	176.82	6,328.0	-1,770.05	-616.0	-27.1	614.3	0.00	0.00	0.00
7,200.0	90.00	176.82	6,328.0	-1,770.05	-715.8	-21.5	714.3	0.00	0.00	0.00
7,300.0	90.00	176.82	6,328.0	-1,770.05	-815.7	-16.0	814.3	0.00	0.00	0.00
7,400.0	90.00	176.82	6,328.0	-1,770.05	-915.5	-10.4	914.3	0.00	0.00	0.00
7,500.0	90.00	176.82	6,328.0	-1,770.05	-1,015.4	-4.9	1,014.3	0.00	0.00	0.00
7,600.0	90.00	176.82	6,328.0	-1,770.04	-1,115.2	0.7	1,114.3	0.00	0.00	0.00
7,700.0	90.00	176.82	6,328.0	-1,770.04	-1,215.1	6.2	1,214.3	0.00	0.00	0.00
7,800.0	90.00	176.82	6,328.0	-1,770.04	-1,314.9	11.8	1,314.3	0.00	0.00	0.00
7,900.0	90.00	176.82	6,328.0	-1,770.04	-1,414.8	17.3	1,414.2	0.00	0.00	0.00
8,000.0	90.00	176.82	6,328.0	-1,770.04	-1,514.6	22.9	1,514.2	0.00	0.00	0.00
8,100.0	90.00	176.82	6,328.0	-1,770.04	-1,614.5	28.4	1,614.2	0.00	0.00	0.00
8,200.0	90.00	176.82	6,328.0	-1,770.04	-1,714.3	34.0	1,714.2	0.00	0.00	0.00
8,300.0	90.00	176.82	6,328.0	-1,770.04	-1,814.1	39.5	1,814.2	0.00	0.00	0.00
8,400.0	90.00	176.82	6,328.0	-1,770.04	-1,914.0	45.1	1,914.2	0.00	0.00	0.00
8,500.0	90.00	176.82	6,328.0	-1,770.04	-2,013.8	50.6	2,014.2	0.00	0.00	0.00
8,600.0	90.00	176.82	6,328.0	-1,770.04	-2,113.7	56.2	2,114.2	0.00	0.00	0.00
8,700.0	90.00	176.82	6,328.0	-1,770.04	-2,213.5	61.7	2,214.2	0.00	0.00	0.00
8,800.0	90.00	176.82	6,328.0	-1,770.04	-2,313.4	67.3	2,314.2	0.00	0.00	0.00
8,900.0	90.00	176.82	6,328.0	-1,770.03	-2,413.2	72.8	2,414.1	0.00	0.00	0.00

Planning Report



Database:	EDM 5000.1 Single User Db	Local Co-ordinate Reference:	Well STATE SEVENTY HOLES P41-T44-6HNC
Company:	BONANZA CREEK ENERGY INC.	TVD Reference:	KB-EST @ 4558.0usft (Original Well Elev)
Project:	WELD COUNTY, COLORADO (NAD 83)	MD Reference:	KB-EST @ 4558.0usft (Original Well Elev)
Site:	NE NE SEC. 6 T4N R62W 6th P.M.	North Reference:	True
Well:	STATE SEVENTY HOLES P41-T44-6HNC	Survey Calculation Method:	Minimum Curvature
Wellbore:	ORIGINAL WELLBORE		
Design:	PROPOSAL #1		

Planned Survey

MD (usft)	Inc (°)	Azi (°)	TVD (usft)	SS (usft)	+N/-S (usft)	+E/-W (usft)	Vertical Section (usft)	Dogleg Rate (°/100usft)	Build Rate (°/100usft)	Turn Rate (°/100usft)
9,000.0	90.00	176.82	6,328.0	-1,770.03	-2,513.1	78.4	2,514.1	0.00	0.00	0.00
9,100.0	90.00	176.82	6,328.0	-1,770.03	-2,612.9	83.9	2,614.1	0.00	0.00	0.00
9,200.0	90.00	176.82	6,328.0	-1,770.03	-2,712.8	89.5	2,714.1	0.00	0.00	0.00
9,300.0	90.00	176.82	6,328.0	-1,770.03	-2,812.6	95.0	2,814.1	0.00	0.00	0.00
9,400.0	90.00	176.82	6,328.0	-1,770.03	-2,912.4	100.6	2,914.1	0.00	0.00	0.00
9,500.0	90.00	176.82	6,328.0	-1,770.03	-3,012.3	106.1	3,014.1	0.00	0.00	0.00
9,600.0	90.00	176.82	6,328.0	-1,770.03	-3,112.1	111.7	3,114.1	0.00	0.00	0.00
9,700.0	90.00	176.82	6,328.0	-1,770.02	-3,212.0	117.2	3,214.1	0.00	0.00	0.00
9,800.0	90.00	176.82	6,328.0	-1,770.02	-3,311.8	122.8	3,314.1	0.00	0.00	0.00
9,900.0	90.00	176.82	6,328.0	-1,770.02	-3,411.7	128.3	3,414.1	0.00	0.00	0.00
10,000.0	90.00	176.82	6,328.0	-1,770.02	-3,511.5	133.9	3,514.0	0.00	0.00	0.00
10,100.0	90.00	176.82	6,328.0	-1,770.02	-3,611.4	139.4	3,614.0	0.00	0.00	0.00
10,200.0	90.00	176.82	6,328.0	-1,770.02	-3,711.2	145.0	3,714.0	0.00	0.00	0.00
10,300.0	90.00	176.82	6,328.0	-1,770.01	-3,811.1	150.5	3,814.0	0.00	0.00	0.00
10,400.0	90.00	176.82	6,328.0	-1,770.01	-3,910.9	156.1	3,914.0	0.00	0.00	0.00
10,500.0	90.00	176.82	6,328.0	-1,770.01	-4,010.8	161.6	4,014.0	0.00	0.00	0.00
10,600.0	90.00	176.82	6,328.0	-1,770.01	-4,110.6	167.2	4,114.0	0.00	0.00	0.00
10,700.0	90.00	176.82	6,328.0	-1,770.01	-4,210.4	172.7	4,214.0	0.00	0.00	0.00
10,800.0	90.00	176.82	6,328.0	-1,770.00	-4,310.3	178.3	4,314.0	0.00	0.00	0.00
10,900.0	90.00	176.82	6,328.0	-1,770.00	-4,410.1	183.8	4,414.0	0.00	0.00	0.00
11,000.0	90.00	176.82	6,328.0	-1,770.00	-4,510.0	189.4	4,514.0	0.00	0.00	0.00
BHL - STATE SEVENTY HOLES P41-T44-6HNC										
11,003.8	90.00	176.82	6,328.0	-1,770.00	-4,513.8	189.6	4,517.7	0.00	0.00	0.00

Plan Annotations

MD (usft)	TVD (usft)	Local Coordinates		Comment
		+N/-S (usft)	+E/-W (usft)	
800.0	800.0	0.0	0.0	START NUDGE (2°/100ft BUR)
1,050.1	1,049.8	10.6	-2.4	EOB TO 5° INC
5,098.7	5,082.9	355.2	-79.2	END OF TANGENT
5,348.8	5,332.7	365.8	-81.6	EOD TO VERTICAL
5,840.8	5,824.7	365.8	-81.6	KOP (12°/100ft BUR)
6,465.8	6,285.9	12.5	-62.0	START OF TANGENT
6,565.8	6,311.8	-84.0	-56.6	END OF TANGENT
6,690.8	6,328.0	-207.4	-49.8	7" ICP *NEW* - STATE SEVENTY HOLES P41-T44-6HNC
11,003.8	6,328.0	-4,513.8	189.6	BHL - STATE SEVENTY HOLES P41-T44-6HNC