

BONANZA CREEK ENERGY INC.

WELD COUNTY, COLORADO (NAD 83)

NE NE SEC. 6 T4N R62W 6th P.M.

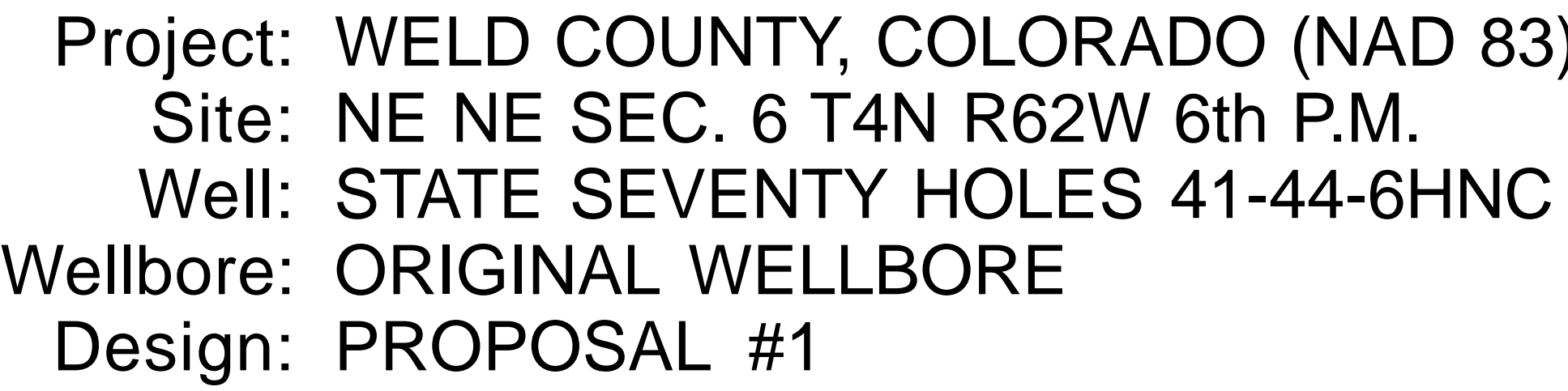
STATE SEVENTY HOLES 41-44-6HNC

ORIGINAL WELLBORE

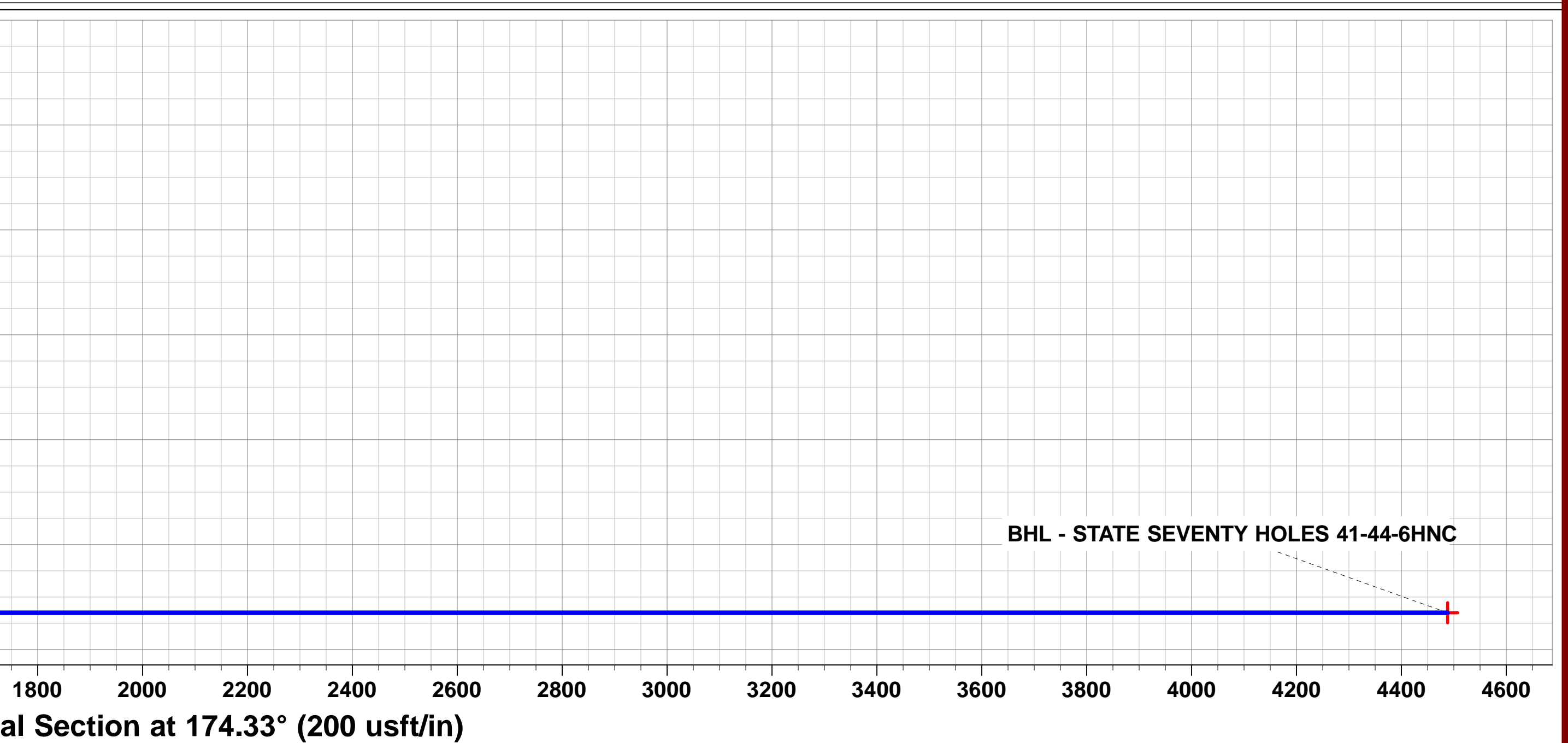
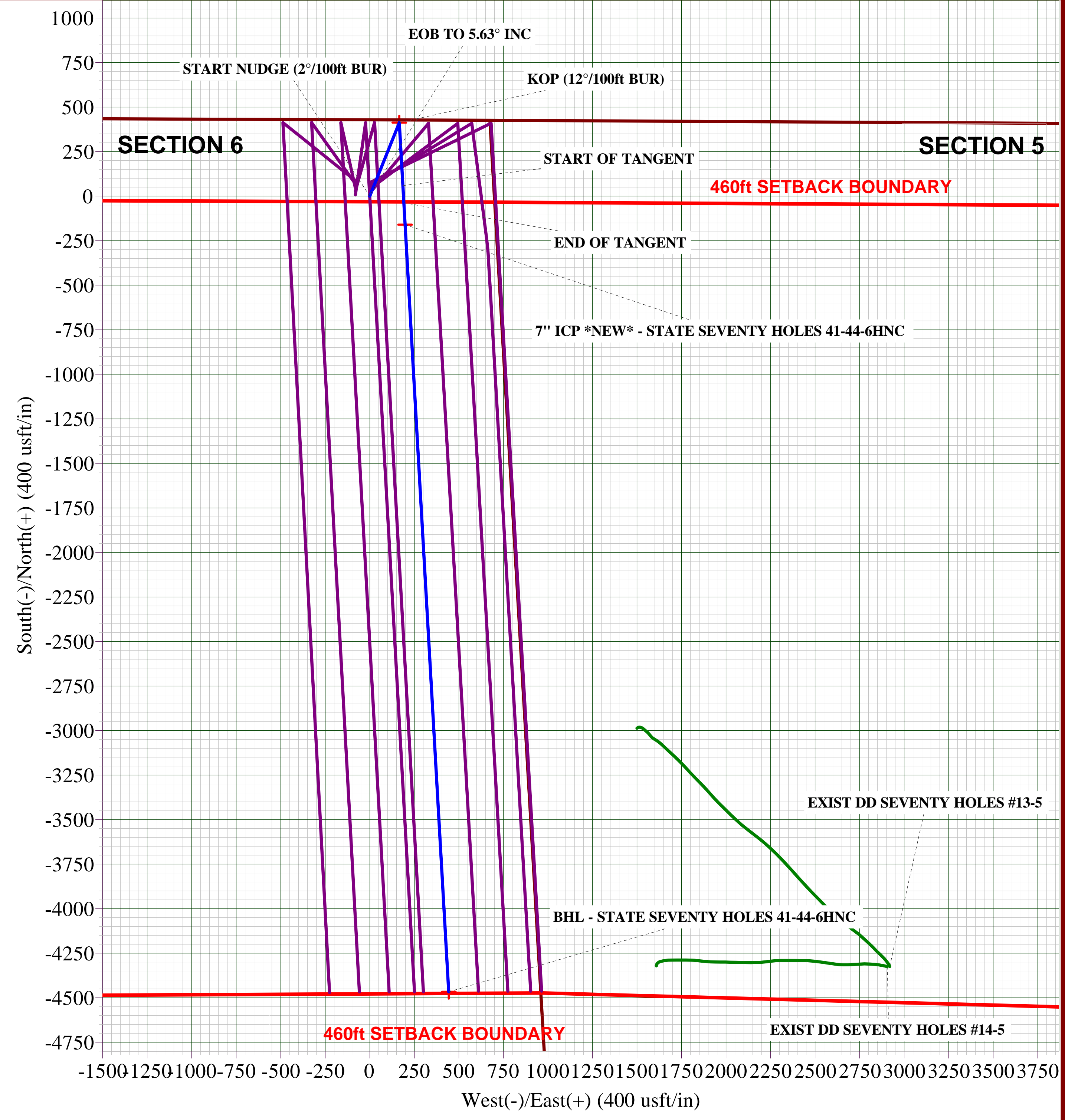
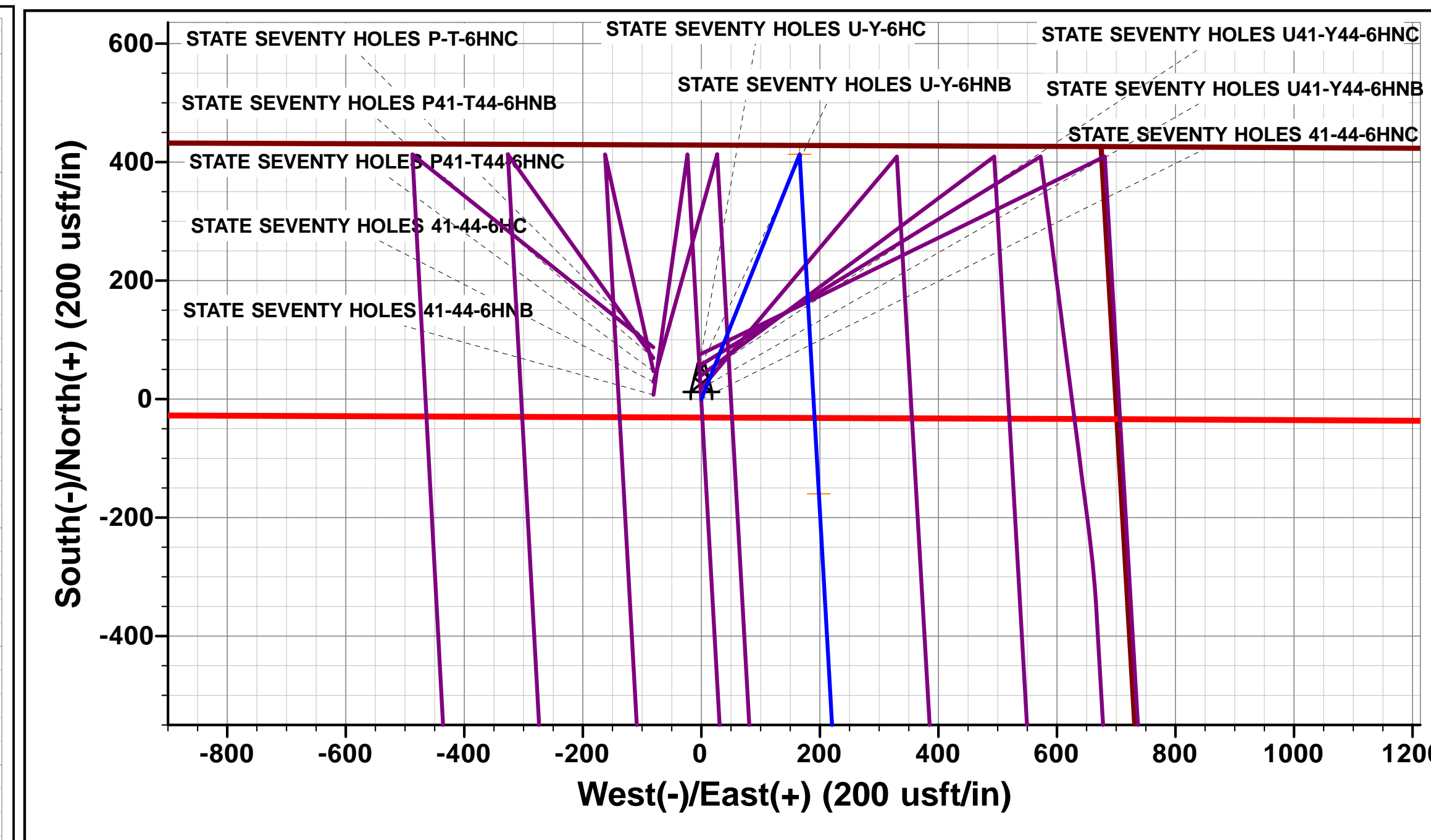
21 December, 2014

Plan: PROPOSAL #1





PROPOSED LOCAL COORDINATES:
SHL: 430ft FNL & 701ft FEL Sec 6
7" ICP *NEW*: 588.9ft FNL & 510ft FEL Sec 6
BHL: 470ft FSL & 516ft FEL Sec 6



Planning Report



Database:	EDM 5000.1 Single User Db	Local Co-ordinate Reference:	Well STATE SEVENTY HOLES 41-44-6HNC
Company:	BONANZA CREEK ENERGY INC.	TVD Reference:	KB-EST @ 4560.0usft (Original Well Elev)
Project:	WELD COUNTY, COLORADO (NAD 83)	MD Reference:	KB-EST @ 4560.0usft (Original Well Elev)
Site:	NE NE SEC. 6 T4N R62W 6th P.M.	North Reference:	True
Well:	STATE SEVENTY HOLES 41-44-6HNC	Survey Calculation Method:	Minimum Curvature
Wellbore:	ORIGINAL WELLBORE		
Design:	PROPOSAL #1		

Project	WELD COUNTY, COLORADO (NAD 83)		
Map System:	US State Plane 1983	System Datum:	Mean Sea Level
Geo Datum:	North American Datum 1983		
Map Zone:	Colorado Northern Zone		Using geodetic scale factor

Site	NE NE SEC. 6 T4N R62W 6th P.M.		
Site Position:		Northing:	1,371,680.11 usft
From:	Lat/Long	Easting:	3,317,072.91 usft
Position Uncertainty:	0.0 usft	Slot Radius:	1.10000ft
		Latitude:	40.348080
		Longitude:	-104.362380
		Grid Convergence:	0.74 °

Well	STATE SEVENTY HOLES 41-44-6HNC		
Well Position	+N-S	-76.5 usft	Northing:
	+E-W	0.0 usft	Easting:
Position Uncertainty		0.0 usft	Wellhead Elevation:
			Latitude:
			Longitude:
			Ground Level:

Wellbore	ORIGINAL WELLBORE				
Magnetics	Model Name	Sample Date	Declination (°)	Dip Angle (°)	Field Strength (nT)
	IGRF2010	21/12/2014	8.17	66.95	52,777

Design	PROPOSAL #1			
Audit Notes:				
Version:	Phase:	PROTOTYPE	Tie On Depth:	0.0
Vertical Section:	Depth From (TVD) (usft)	+N-S (usft)	+E-W (usft)	Direction (°)
	6,330.0	0.0	0.0	174.33

Plan Sections											
MD (usft)	Inc (°)	Azi (°)	Vertical Depth	SS (usft)	+N-S (usft)	+E-W (usft)	Dogleg Rate (°/100usf)	Build Rate (°/100usf)	Turn Rate (°/100usf)	TFO (°)	Target
0.0	0.00	0.00	0.0	-4,560.0	0.0	0.0	0.00	0.00	0.00	0.00	
1,000.0	0.00	0.00	1,000.0	-3,560.0	0.0	0.0	0.00	0.00	0.00	0.00	
1,281.6	5.63	21.86	1,281.1	-3,278.9	12.8	5.1	2.00	2.00	0.00	21.86	
5,536.6	5.63	21.86	5,515.6	955.6	400.4	160.7	0.00	0.00	0.00	0.00	
5,818.1	0.00	0.00	5,796.7	1,236.7	413.2	165.8	2.00	-2.00	0.00	180.00	
5,848.1	0.00	0.00	5,826.7	1,266.7	413.2	165.8	0.00	0.00	0.00	0.00	KOP - STATE SEVI
6,473.1	75.00	176.75	6,287.9	1,727.9	59.9	185.9	12.00	12.00	0.00	176.75	
6,573.1	75.00	176.75	6,313.8	1,753.8	-36.6	191.3	0.00	0.00	0.00	0.00	
6,698.1	90.00	176.75	6,330.0	1,770.0	-159.9	198.3	12.00	12.00	0.00	0.00	
11,011.6	90.00	176.74	6,330.0	1,770.0	-4,466.4	443.3	0.00	0.00	0.00	-83.10	BHL - STATE SEVI

Planning Report



Database:	EDM 5000.1 Single User Db	Local Co-ordinate Reference:	Well STATE SEVENTY HOLES 41-44-6HNC
Company:	BONANZA CREEK ENERGY INC.	TVD Reference:	KB-EST @ 4560.0usft (Original Well Elev)
Project:	WELD COUNTY, COLORADO (NAD 83)	MD Reference:	KB-EST @ 4560.0usft (Original Well Elev)
Site:	NE NE SEC. 6 T4N R62W 6th P.M.	North Reference:	True
Well:	STATE SEVENTY HOLES 41-44-6HNC	Survey Calculation Method:	Minimum Curvature
Wellbore:	ORIGINAL WELLBORE		
Design:	PROPOSAL #1		

Planned Survey										
MD (usft)	Inc (°)	Azi (°)	TVD (usft)	SS (usft)	+N/-S (usft)	+E/-W (usft)	Vertical Section (usft)	Dogleg Rate (°/100usft)	Build Rate (°/100usft)	Turn Rate (°/100usft)
0.0	0.00	0.00	0.0	4,560.00	0.0	0.0	0.0	0.00	0.00	0.00
100.0	0.00	0.00	100.0	4,460.00	0.0	0.0	0.0	0.00	0.00	0.00
200.0	0.00	0.00	200.0	4,360.00	0.0	0.0	0.0	0.00	0.00	0.00
300.0	0.00	0.00	300.0	4,260.00	0.0	0.0	0.0	0.00	0.00	0.00
400.0	0.00	0.00	400.0	4,160.00	0.0	0.0	0.0	0.00	0.00	0.00
500.0	0.00	0.00	500.0	4,060.00	0.0	0.0	0.0	0.00	0.00	0.00
600.0	0.00	0.00	600.0	3,960.00	0.0	0.0	0.0	0.00	0.00	0.00
700.0	0.00	0.00	700.0	3,860.00	0.0	0.0	0.0	0.00	0.00	0.00
800.0	0.00	0.00	800.0	3,760.00	0.0	0.0	0.0	0.00	0.00	0.00
900.0	0.00	0.00	900.0	3,660.00	0.0	0.0	0.0	0.00	0.00	0.00
START NUDGE (2°/100ft BUR)										
1,000.0	0.00	0.00	1,000.0	3,560.00	0.0	0.0	0.0	0.00	0.00	0.00
1,100.0	2.00	21.86	1,100.0	3,460.02	1.6	0.6	-1.5	2.00	2.00	0.00
1,200.0	4.00	21.86	1,199.8	3,360.16	6.5	2.6	-6.2	2.00	2.00	0.00
EOB TO 5.63° INC										
1,281.6	5.63	21.86	1,281.1	3,278.86	12.8	5.1	-12.3	2.00	2.00	0.00
1,300.0	5.63	21.86	1,299.5	3,260.54	14.5	5.8	-13.9	0.00	0.00	0.00
1,400.0	5.63	21.86	1,399.0	3,161.02	23.6	9.5	-22.6	0.00	0.00	0.00
1,500.0	5.63	21.86	1,498.5	3,061.51	32.7	13.1	-31.3	0.00	0.00	0.00
1,600.0	5.63	21.86	1,598.0	2,961.99	41.8	16.8	-40.0	0.00	0.00	0.00
1,700.0	5.63	21.86	1,697.5	2,862.47	50.9	20.4	-48.7	0.00	0.00	0.00
1,800.0	5.63	21.86	1,797.0	2,762.96	60.0	24.1	-57.4	0.00	0.00	0.00
1,900.0	5.63	21.86	1,896.6	2,663.44	69.2	27.7	-66.1	0.00	0.00	0.00
2,000.0	5.63	21.86	1,996.1	2,563.92	78.3	31.4	-74.8	0.00	0.00	0.00
2,100.0	5.63	21.86	2,095.6	2,464.40	87.4	35.1	-83.5	0.00	0.00	0.00
2,200.0	5.63	21.86	2,195.1	2,364.89	96.5	38.7	-92.2	0.00	0.00	0.00
2,300.0	5.63	21.86	2,294.6	2,265.37	105.6	42.4	-100.9	0.00	0.00	0.00
2,400.0	5.63	21.86	2,394.1	2,165.85	114.7	46.0	-109.6	0.00	0.00	0.00
2,500.0	5.63	21.86	2,493.7	2,066.33	123.8	49.7	-118.3	0.00	0.00	0.00
2,600.0	5.63	21.86	2,593.2	1,966.82	132.9	53.3	-127.0	0.00	0.00	0.00
2,700.0	5.63	21.86	2,692.7	1,867.30	142.0	57.0	-135.7	0.00	0.00	0.00
2,800.0	5.63	21.86	2,792.2	1,767.78	151.1	60.6	-144.4	0.00	0.00	0.00
2,900.0	5.63	21.86	2,891.7	1,668.27	160.2	64.3	-153.1	0.00	0.00	0.00
3,000.0	5.63	21.86	2,991.3	1,568.75	169.3	68.0	-161.8	0.00	0.00	0.00
3,100.0	5.63	21.86	3,090.8	1,469.23	178.5	71.6	-170.5	0.00	0.00	0.00
3,200.0	5.63	21.86	3,190.3	1,369.71	187.6	75.3	-179.2	0.00	0.00	0.00
3,300.0	5.63	21.86	3,289.8	1,270.20	196.7	78.9	-187.9	0.00	0.00	0.00
3,400.0	5.63	21.86	3,389.3	1,170.68	205.8	82.6	-196.6	0.00	0.00	0.00
3,500.0	5.63	21.86	3,488.8	1,071.16	214.9	86.2	-205.3	0.00	0.00	0.00
3,600.0	5.63	21.86	3,588.4	971.64	224.0	89.9	-214.0	0.00	0.00	0.00
3,700.0	5.63	21.86	3,687.9	872.13	233.1	93.5	-222.7	0.00	0.00	0.00
3,800.0	5.63	21.86	3,787.4	772.61	242.2	97.2	-231.4	0.00	0.00	0.00
3,900.0	5.63	21.86	3,886.9	673.09	251.3	100.8	-240.1	0.00	0.00	0.00
4,000.0	5.63	21.86	3,986.4	573.58	260.4	104.5	-248.8	0.00	0.00	0.00
4,100.0	5.63	21.86	4,085.9	474.06	269.5	108.2	-257.5	0.00	0.00	0.00
4,200.0	5.63	21.86	4,185.5	374.54	278.6	111.8	-266.2	0.00	0.00	0.00
4,300.0	5.63	21.86	4,285.0	275.02	287.7	115.5	-274.9	0.00	0.00	0.00
4,400.0	5.63	21.86	4,384.5	175.51	296.9	119.1	-283.6	0.00	0.00	0.00
4,500.0	5.63	21.86	4,484.0	75.99	306.0	122.8	-292.3	0.00	0.00	0.00
4,600.0	5.63	21.86	4,583.5	-23.53	315.1	126.4	-301.0	0.00	0.00	0.00
4,700.0	5.63	21.86	4,683.0	-123.05	324.2	130.1	-309.7	0.00	0.00	0.00
4,800.0	5.63	21.86	4,782.6	-222.56	333.3	133.7	-318.4	0.00	0.00	0.00
4,900.0	5.63	21.86	4,882.1	-322.08	342.4	137.4	-327.1	0.00	0.00	0.00
5,000.0	5.63	21.86	4,981.6	-421.60	351.5	141.0	-335.9	0.00	0.00	0.00

Planning Report



Database:	EDM 5000.1 Single User Db	Local Co-ordinate Reference:	Well STATE SEVENTY HOLES 41-44-6HNC
Company:	BONANZA CREEK ENERGY INC.	TVD Reference:	KB-EST @ 4560.0usft (Original Well Elev)
Project:	WELD COUNTY, COLORADO (NAD 83)	MD Reference:	KB-EST @ 4560.0usft (Original Well Elev)
Site:	NE NE SEC. 6 T4N R62W 6th P.M.	North Reference:	True
Well:	STATE SEVENTY HOLES 41-44-6HNC	Survey Calculation Method:	Minimum Curvature
Wellbore:	ORIGINAL WELLBORE		
Design:	PROPOSAL #1		

Planned Survey										
MD (usft)	Inc (°)	Azi (°)	TVD (usft)	SS (usft)	+N/-S (usft)	+E/-W (usft)	Vertical Section (usft)	Dogleg Rate (°/100usft)	Build Rate (°/100usft)	Turn Rate (°/100usft)
5,100.0	5.63	21.86	5,081.1	-521.12	360.6	144.7	-344.6	0.00	0.00	0.00
5,200.0	5.63	21.86	5,180.6	-620.63	369.7	148.4	-353.3	0.00	0.00	0.00
5,300.0	5.63	21.86	5,280.1	-720.15	378.8	152.0	-362.0	0.00	0.00	0.00
5,400.0	5.63	21.86	5,379.7	-819.67	387.9	155.7	-370.7	0.00	0.00	0.00
5,500.0	5.63	21.86	5,479.2	-919.18	397.0	159.3	-379.4	0.00	0.00	0.00
END OF TANGENT										
5,536.6	5.63	21.86	5,515.6	-955.56	400.4	160.7	-382.5	0.00	0.00	0.00
5,600.0	4.36	21.86	5,578.8	-1,018.77	405.5	162.7	-387.4	2.00	-2.00	0.00
5,700.0	2.36	21.86	5,678.6	-1,118.59	410.9	164.9	-392.6	2.00	-2.00	0.00
5,800.0	0.36	21.86	5,778.6	-1,218.55	413.1	165.8	-394.8	2.00	-2.00	0.00
EOD TO VERTICAL										
5,818.1	0.00	0.00	5,796.7	-1,236.70	413.2	165.8	-394.8	2.00	-2.00	0.00
KOP (12°/100ft BUR)										
5,848.1	0.00	0.00	5,826.7	-1,266.70	413.2	165.8	-394.8	0.00	0.00	0.00
5,900.0	6.22	176.75	5,878.5	-1,318.45	410.4	166.0	-392.0	12.00	12.00	0.00
6,000.0	18.22	176.75	5,976.0	-1,416.01	389.3	167.2	-370.9	12.00	12.00	0.00
6,100.0	30.22	176.75	6,067.0	-1,507.04	348.4	169.5	-330.0	12.00	12.00	0.00
6,200.0	42.22	176.75	6,147.6	-1,587.56	289.5	172.8	-271.0	12.00	12.00	0.00
6,300.0	54.22	176.75	6,214.1	-1,654.06	215.2	177.0	-196.7	12.00	12.00	0.00
6,400.0	66.22	176.75	6,263.6	-1,703.64	128.7	182.0	-110.1	12.00	12.00	0.00
START OF TANGENT										
6,473.1	75.00	176.75	6,287.9	-1,727.90	59.9	185.9	-41.2	12.00	12.00	0.00
6,500.0	75.00	176.75	6,294.8	-1,734.85	34.0	187.3	-15.3	0.00	0.00	0.00
END OF TANGENT										
6,573.1	75.00	176.75	6,313.8	-1,753.78	-36.6	191.3	55.3	0.00	0.00	0.00
6,600.0	78.22	176.75	6,320.0	-1,760.00	-62.6	192.8	81.4	12.00	12.00	0.00
7" ICP *NEW* - STATE SEVENTY HOLES 41-44-6HNC										
6,698.1	90.00	176.75	6,330.0	-1,770.05	-159.9	198.3	178.7	12.00	12.00	0.00
6,700.0	90.00	176.75	6,330.0	-1,770.05	-161.8	198.5	180.6	0.00	0.00	0.00
6,800.0	90.00	176.75	6,330.0	-1,770.05	-261.6	204.1	280.5	0.00	0.00	0.00
6,900.0	90.00	176.75	6,330.0	-1,770.05	-361.5	209.8	380.4	0.00	0.00	0.00
7,000.0	90.00	176.75	6,330.0	-1,770.05	-461.3	215.5	480.3	0.00	0.00	0.00
7,100.0	90.00	176.75	6,330.0	-1,770.05	-561.1	221.1	580.2	0.00	0.00	0.00
7,200.0	90.00	176.75	6,330.0	-1,770.05	-661.0	226.8	680.1	0.00	0.00	0.00
7,300.0	90.00	176.75	6,330.0	-1,770.05	-760.8	232.5	780.1	0.00	0.00	0.00
7,400.0	90.00	176.75	6,330.0	-1,770.05	-860.7	238.1	880.0	0.00	0.00	0.00
7,500.0	90.00	176.75	6,330.0	-1,770.05	-960.5	243.8	979.9	0.00	0.00	0.00
7,600.0	90.00	176.75	6,330.0	-1,770.04	-1,060.3	249.5	1,079.8	0.00	0.00	0.00
7,700.0	90.00	176.75	6,330.0	-1,770.04	-1,160.2	255.2	1,179.7	0.00	0.00	0.00
7,800.0	90.00	176.75	6,330.0	-1,770.04	-1,260.0	260.8	1,279.6	0.00	0.00	0.00
7,900.0	90.00	176.75	6,330.0	-1,770.04	-1,359.9	266.5	1,379.5	0.00	0.00	0.00
8,000.0	90.00	176.75	6,330.0	-1,770.04	-1,459.7	272.2	1,479.4	0.00	0.00	0.00
8,100.0	90.00	176.75	6,330.0	-1,770.04	-1,559.5	277.9	1,579.3	0.00	0.00	0.00
8,200.0	90.00	176.75	6,330.0	-1,770.04	-1,659.4	283.5	1,679.3	0.00	0.00	0.00
8,300.0	90.00	176.75	6,330.0	-1,770.04	-1,759.2	289.2	1,779.2	0.00	0.00	0.00
8,400.0	90.00	176.75	6,330.0	-1,770.04	-1,859.0	294.9	1,879.1	0.00	0.00	0.00
8,500.0	90.00	176.75	6,330.0	-1,770.04	-1,958.9	300.6	1,979.0	0.00	0.00	0.00
8,600.0	90.00	176.75	6,330.0	-1,770.04	-2,058.7	306.2	2,078.9	0.00	0.00	0.00
8,700.0	90.00	176.75	6,330.0	-1,770.04	-2,158.6	311.9	2,178.8	0.00	0.00	0.00
8,800.0	90.00	176.75	6,330.0	-1,770.04	-2,258.4	317.6	2,278.7	0.00	0.00	0.00
8,900.0	90.00	176.74	6,330.0	-1,770.03	-2,358.2	323.3	2,378.6	0.00	0.00	0.00
9,000.0	90.00	176.74	6,330.0	-1,770.03	-2,458.1	329.0	2,478.6	0.00	0.00	0.00
9,100.0	90.00	176.74	6,330.0	-1,770.03	-2,557.9	334.6	2,578.5	0.00	0.00	0.00

Planning Report



Database:	EDM 5000.1 Single User Db	Local Co-ordinate Reference:	Well STATE SEVENTY HOLES 41-44-6HNC
Company:	BONANZA CREEK ENERGY INC.	TVD Reference:	KB-EST @ 4560.0usft (Original Well Elev)
Project:	WELD COUNTY, COLORADO (NAD 83)	MD Reference:	KB-EST @ 4560.0usft (Original Well Elev)
Site:	NE NE SEC. 6 T4N R62W 6th P.M.	North Reference:	True
Well:	STATE SEVENTY HOLES 41-44-6HNC	Survey Calculation Method:	Minimum Curvature
Wellbore:	ORIGINAL WELLBORE		
Design:	PROPOSAL #1		

Planned Survey										
MD (usft)	Inc (°)	Azi (°)	TVD (usft)	SS (usft)	+N/-S (usft)	+E/-W (usft)	Vertical Section (usft)	Dogleg Rate (°/100usft)	Build Rate (°/100usft)	Turn Rate (°/100usft)
9,200.0	90.00	176.74	6,330.0	-1,770.03	-2,657.8	340.3	2,678.4	0.00	0.00	0.00
9,300.0	90.00	176.74	6,330.0	-1,770.03	-2,757.6	346.0	2,778.3	0.00	0.00	0.00
9,400.0	90.00	176.74	6,330.0	-1,770.03	-2,857.4	351.7	2,878.2	0.00	0.00	0.00
9,500.0	90.00	176.74	6,330.0	-1,770.03	-2,957.3	357.4	2,978.1	0.00	0.00	0.00
9,600.0	90.00	176.74	6,330.0	-1,770.03	-3,057.1	363.0	3,078.0	0.00	0.00	0.00
9,700.0	90.00	176.74	6,330.0	-1,770.02	-3,157.0	368.7	3,177.9	0.00	0.00	0.00
9,800.0	90.00	176.74	6,330.0	-1,770.02	-3,256.8	374.4	3,277.8	0.00	0.00	0.00
9,900.0	90.00	176.74	6,330.0	-1,770.02	-3,356.6	380.1	3,377.8	0.00	0.00	0.00
10,000.0	90.00	176.74	6,330.0	-1,770.02	-3,456.5	385.8	3,477.7	0.00	0.00	0.00
10,100.0	90.00	176.74	6,330.0	-1,770.02	-3,556.3	391.4	3,577.6	0.00	0.00	0.00
10,200.0	90.00	176.74	6,330.0	-1,770.02	-3,656.1	397.1	3,677.5	0.00	0.00	0.00
10,300.0	90.00	176.74	6,330.0	-1,770.01	-3,756.0	402.8	3,777.4	0.00	0.00	0.00
10,400.0	90.00	176.74	6,330.0	-1,770.01	-3,855.8	408.5	3,877.3	0.00	0.00	0.00
10,500.0	90.00	176.74	6,330.0	-1,770.01	-3,955.7	414.2	3,977.2	0.00	0.00	0.00
10,600.0	90.00	176.74	6,330.0	-1,770.01	-4,055.5	419.9	4,077.1	0.00	0.00	0.00
10,700.0	90.00	176.74	6,330.0	-1,770.01	-4,155.3	425.6	4,177.0	0.00	0.00	0.00
10,800.0	90.00	176.74	6,330.0	-1,770.00	-4,255.2	431.2	4,277.0	0.00	0.00	0.00
10,900.0	90.00	176.74	6,330.0	-1,770.00	-4,355.0	436.9	4,376.9	0.00	0.00	0.00
11,000.0	90.00	176.74	6,330.0	-1,770.00	-4,454.8	442.6	4,476.8	0.00	0.00	0.00
BHL - STATE SEVENTY HOLES 41-44-6HNC										
11,011.6	90.00	176.74	6,330.0	-1,770.00	-4,466.4	443.3	4,488.3	0.00	0.00	0.00

Plan Annotations					
MD (usft)	TVD (usft)	Local Coordinates		Comment	
		+N/-S (usft)	+E/-W (usft)		
1,000.0	1,000.0	0.0	0.0	START NUDGE (2°/100ft BUR)	
1,281.6	1,281.1	12.8	5.1	EOB TO 5.63° INC	
5,536.6	5,515.6	400.4	160.7	END OF TANGENT	
5,818.1	5,796.7	413.2	165.8	EOD TO VERTICAL	
5,848.1	5,826.7	413.2	165.8	KOP (12°/100ft BUR)	
6,473.1	6,287.9	59.9	185.9	START OF TANGENT	
6,573.1	6,313.8	-36.6	191.3	END OF TANGENT	
6,698.1	6,330.0	-159.9	198.3	7" ICP *NEW* - STATE SEVENTY HOLES 41-44-6HNC	
11,011.6	6,330.0	-4,466.4	443.3	BHL - STATE SEVENTY HOLES 41-44-6HNC	