

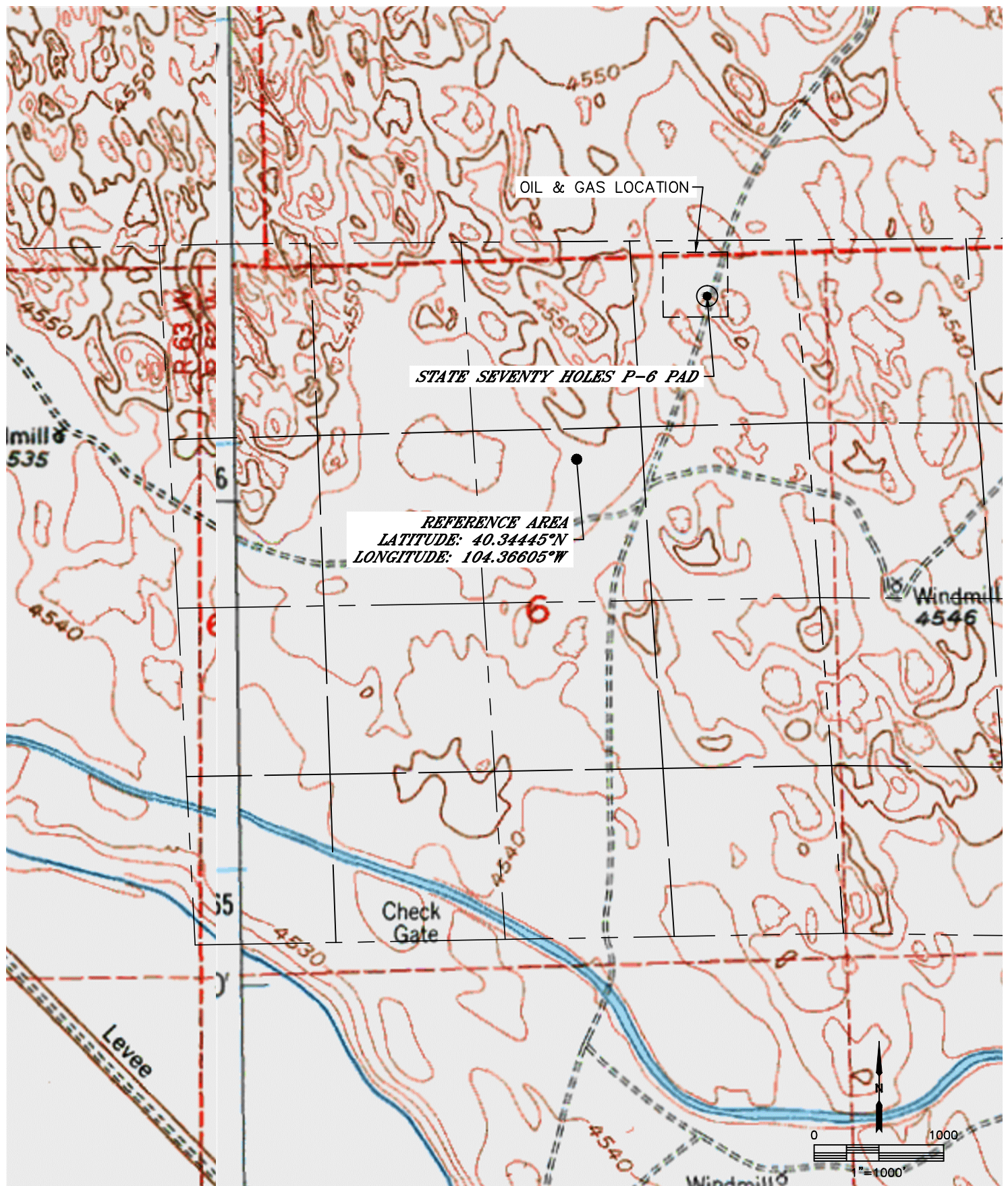


Lat40°, Inc. 6250 W. 10th Street, Unit 2, Greeley, CO 970-515-5294

REFERENCE AREA MAP

STATE SEVENTY HOLES P-6 PAD

SECTION: 6
TOWNSHIP: 4N
RANGE: 62W
6TH. P.M.
WELD COUNTY, CO





Lat40°, Inc. 6250 W. 10th Street, Unit 2, Greeley, CO 970-515-5294

REFERENCE AREA PICTURES

STATE SEVENTY HOLES P-6 PAD

SECTION: 6
TOWNSHIP: 4N
RANGE: 62W
6TH. P.M.
WELD COUNTY, CO

DATE: 11/17/2014



VIEW NORTH



VIEW WEST



VIEW EAST



VIEW SOUTH