

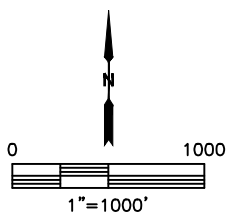
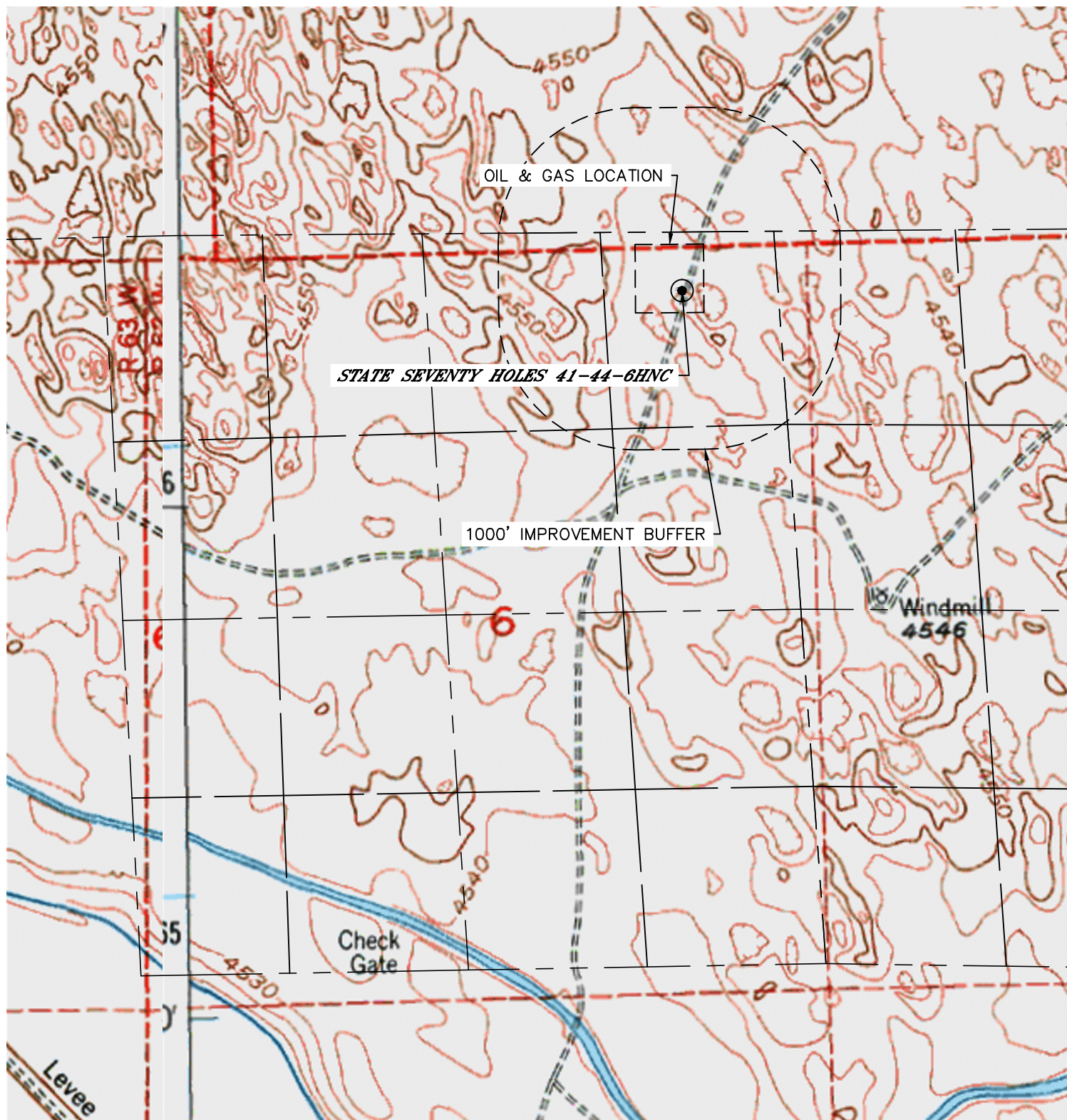


Lat40°, Inc. 6250 W. 10th Street, Unit 2, Greeley, CO 970-515-5294

HYDROLOGY MAP

STATE SEVENTY HOLES P-6 PAD

SECTION: 6
TOWNSHIP: 4N
RANGE: 62W
6TH. P.M.
WELD COUNTY, CO



NO VISIBLE SURFACE WATER WITHIN 1000'

DATE: 12/8/2014
PROJECT#: 2014214