

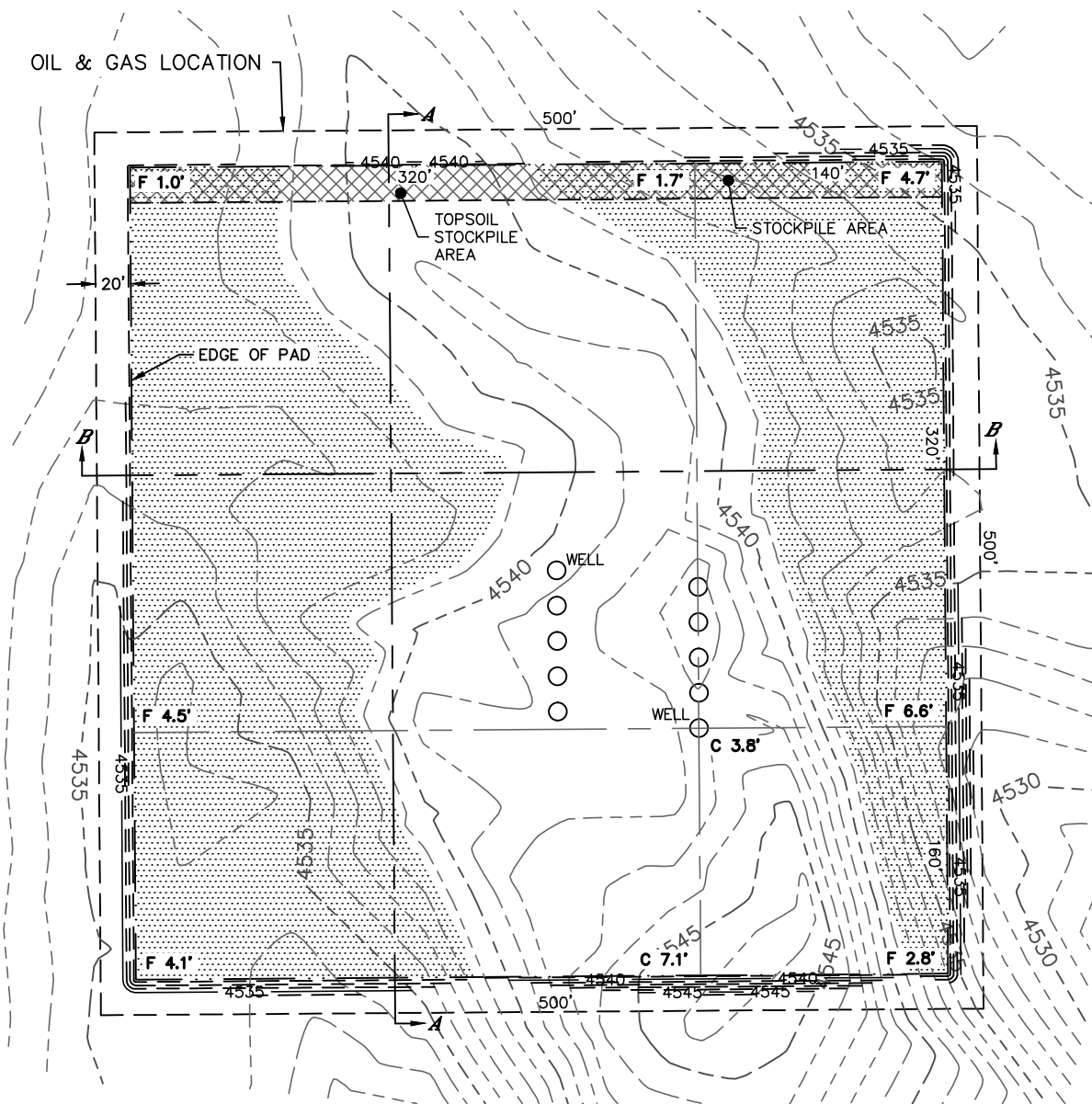


Lat40°, Inc. 6250 W. 10th Street, Unit 2, Greeley, CO 970-515-5294

# CUT & FILL DIAGRAM

STATE SEVENTY HOLES P-6 PAD

SECTION: 6  
TOWNSHIP: 4N  
RANGE: 62W  
6TH. P.M.  
WELD COUNTY, CO



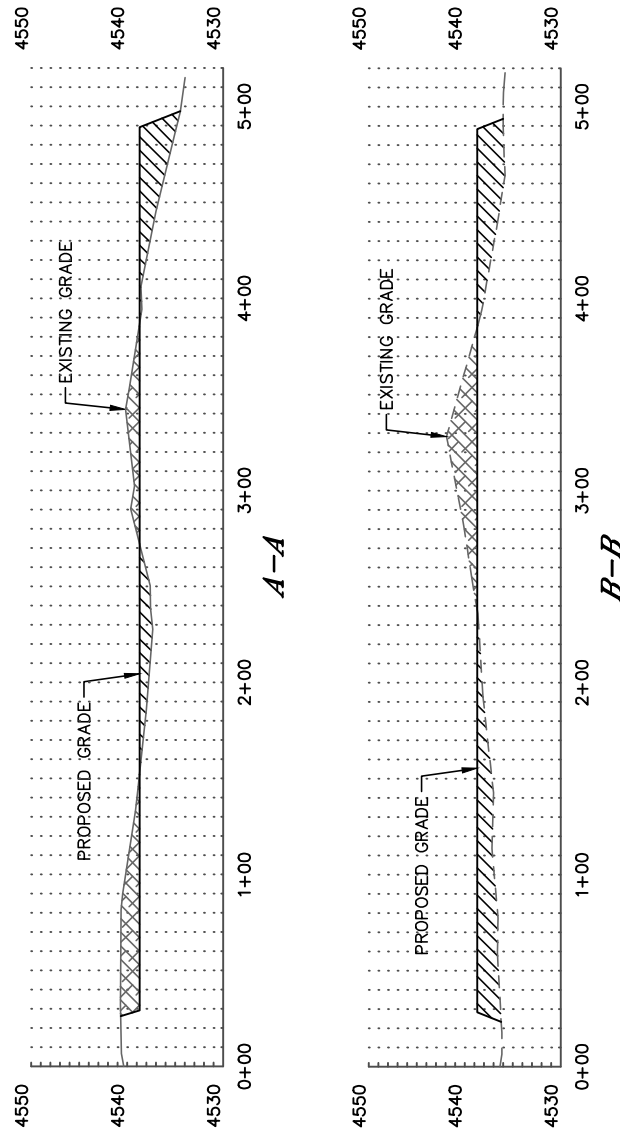


Lat40°, Inc. 6250 W. 10th Street, Unit 2, Greeley, CO 970-515-5294

# CROSS SECTION DIAGRAM

STATE SEVENTY HOLES P-6 PAD

SECTION: 6  
TOWNSHIP: 4N  
RANGE: 62W  
6TH. P.M.  
WELD COUNTY, CO



HORIZONTAL SCALE: 1"=100', VERTICAL SCALE: 1"=20'