



Lat40°, Inc. 6250 W. 10th Street, Unit 2, Greeley, CO 970-515-5294

ACCESS ROAD MAP

STATE SEVENTY HOLES P-6 PAD

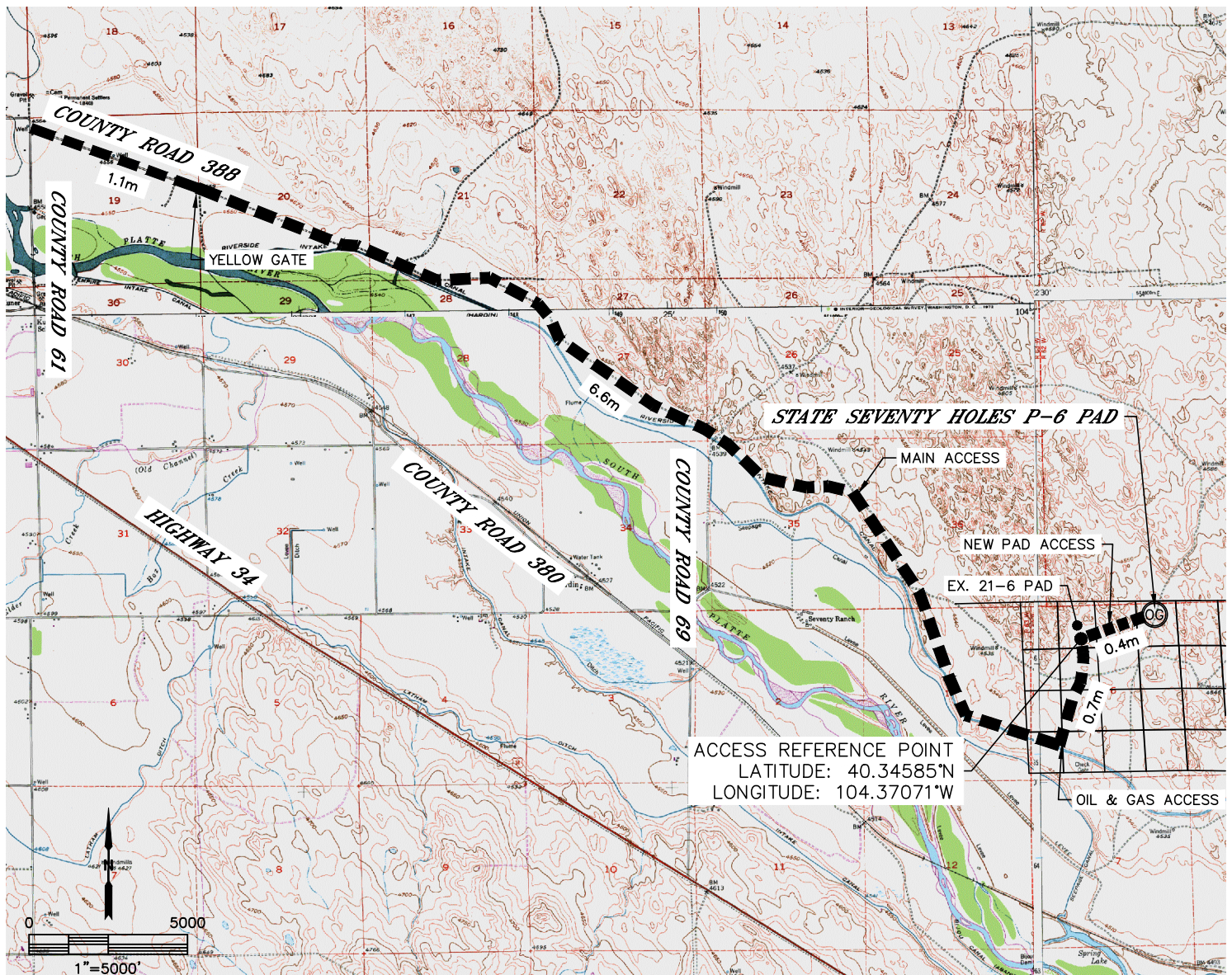
SECTION: 6
TOWNSHIP: 4N
RANGE: 62W
6TH. P.M.
WELD COUNTY, CO

EXISTING WELLS:
NONE

PROPOSED WELLS:
STATE SEVENTY HOLES U-Y-6HC
STATE SEVENTY HOLES U-Y-6HNB
STATE SEVENTY HOLES U41-Y44-6HNC
STATE SEVENTY HOLES U41-Y44-6HNB
STATE SEVENTY HOLES 41-44-6HNC
STATE SEVENTY HOLES 41-44-6HNB
STATE SEVENTY HOLES 41-44-6HC
STATE SEVENTY HOLES P41-T44-6HNC
STATE SEVENTY HOLES P41-T44-6HNB
STATE SEVENTY HOLES P-T-6HNC

DRIVING DIRECTIONS TO STATE SEVENTY HOLES P-6 PAD:

FROM THE INTERSECTION OF COUNTY ROAD 388 AND COUNTY ROAD 61, DRIVE SOUTHEAST ON COUNTY ROAD 388 FOR 1.1 MILES TO THE 70 RANCH MAIN ACCESS (YELLOW GATE), DRIVE SOUTHEAST ALONG MAIN ACCESS ROAD FOR 6.6 MILES, DRIVE NORTHEAST ALONG EXISTING OIL & GAS ACCESS ROAD FOR 0.7 MILES, DRIVE NORTHEAST ALONG PAD ACCESS ROAD 0.4 MILES TO THE STATE SEVENTY HOLES P-6 PAD SITE.



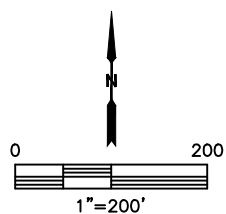
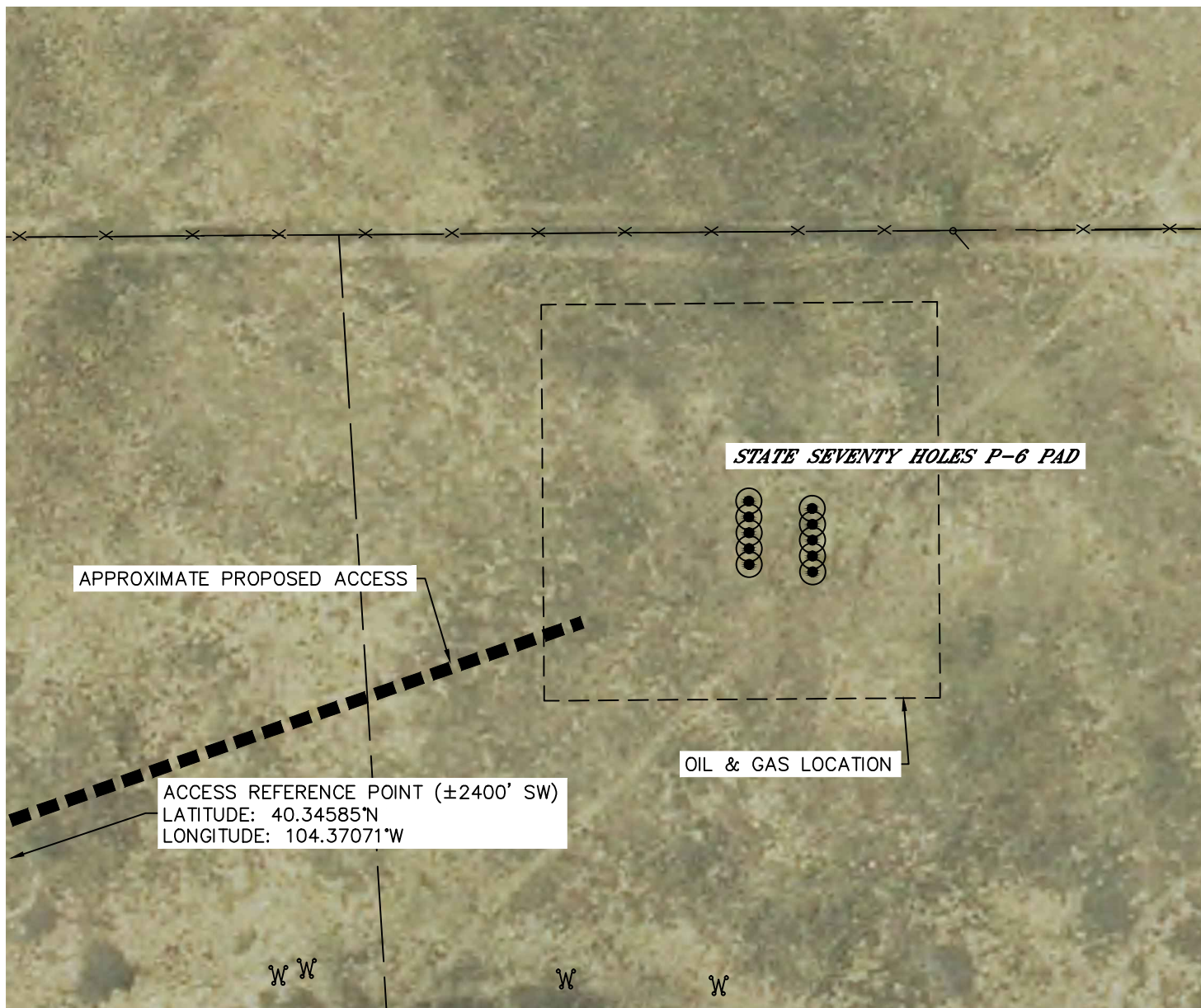


Lat40°, Inc. 6250 W. 10th Street, Unit 2, Greeley, CO 970-515-5294

ACCESS ROAD MAP

STATE SEVENTY HOLES P-6 PAD

SECTION: 6
TOWNSHIP: 4N
RANGE: 62W
6TH. P.M.
WELD COUNTY, CO





Lat40°, Inc. 6250 W. 10th Street, Unit 2, Greeley, CO 970-515-5294

ACCESS PICTURES

STATE SEVENTY HOLES P-6 PAD

SECTION: 6
TOWNSHIP: 4N
RANGE: 62W
6TH. P.M.
WELD COUNTY, CO

DATE: 11/17/2014



VIEW NORTH (To St. Seventy Holes 21-6 Pad)



VIEW EAST



VIEW SOUTH (To 70 Ranch Main Access)