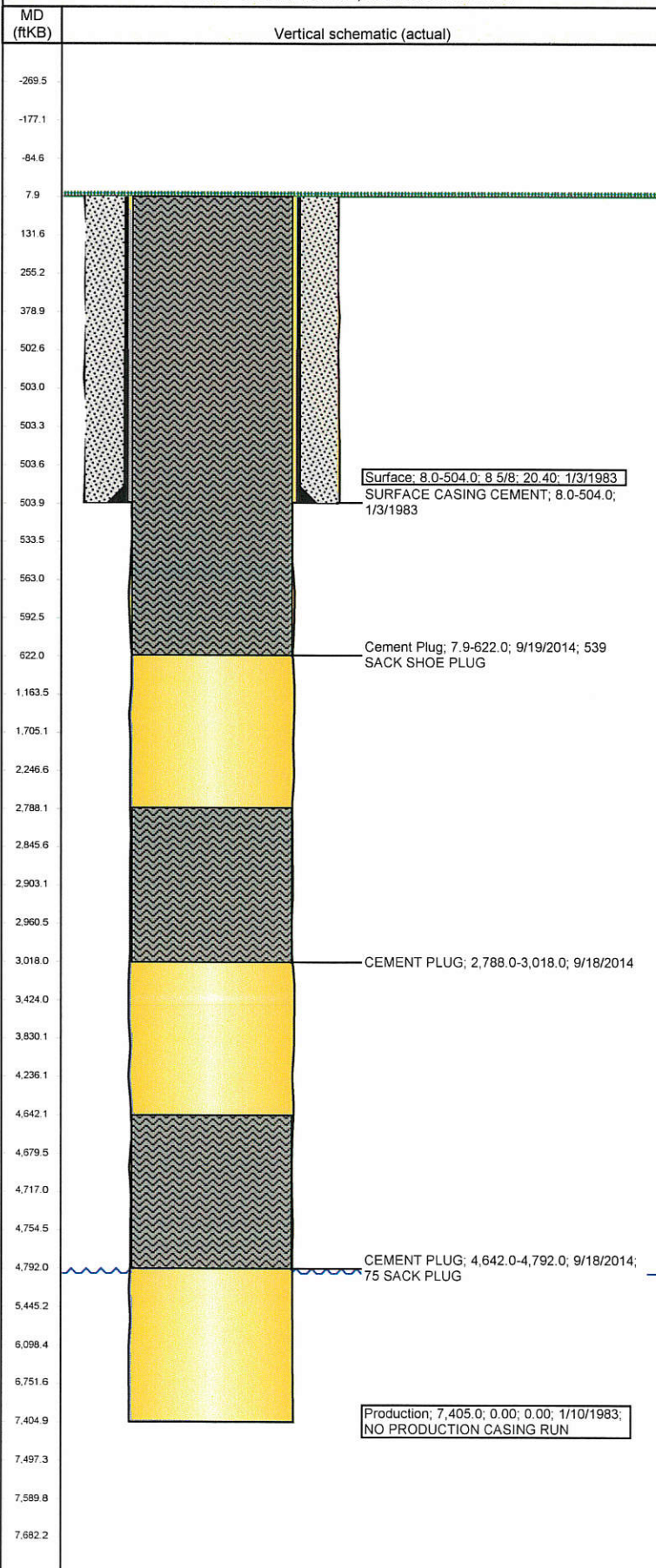


Well Name: CORNISH 01

VERTICAL - ORIGINAL HOLE, 2/20/2015 7:43:12 AM



| Well Header   |           |                              |                    |                         |                    |                         |                    |                  |
|---|-----------|------------------------------|--------------------|-------------------------|--------------------|-------------------------|--------------------|------------------|
| API<br>05-123-10863   |           | Business Unit<br>DJ BASIN    |                    | District<br>15          |                    | Well Config<br>VERTICAL |                    |                  |
| Original KB Elevation (ft)<br>4,867.00  |           | KB - GL / MSL (ftKB)<br>8.00 |                    | Spud Date<br>1/3/1983   |                    | P & A Date<br>1/20/1983 |                    |                  |
| Comment   |           |                              |                    |                         |                    |                         |                    |                  |
| Directions To Well<br>HWY 392 & WCR 74, East 2.0 mi, South Through Green Gate (Lock - 2001),<br>Go Southwest 0.2mi , South 0.4mi, East 0.1mi Into |           |                              |                    |                         |                    |                         |                    |                  |
| Current PBSD (ftKB)<br>ORIGINAL HOLE - 0.0  |           |                              |                    |                         |                    |                         |                    |                  |
| Surface Location (Congressional)  |           |                              |                    |                         |                    |                         |                    |                  |
| Quarter 1   | Quarter 2 | Quarter 3                    | Quarter 4          | Section<br>1            | Township<br>6 N    | Twtnshp N...            | Range<br>63        | Rng E/W Dir<br>W |
| Bottom Hole Location  |           |                              |                    |                         |                    |                         |                    |                  |
| North-South Distance (ft)   |           | From N or S Line             |                    | East-West Distance (ft) |                    |                         | From E or W Line   |                  |
| Plug Back Total Depths  |           |                              |                    |                         |                    |                         |                    |                  |
| Date  |           | Depth (ftKB)                 |                    | Method                  |                    | Com                     |                    |                  |
| 1/18/1983   |           |                              |                    |                         |                    |                         |                    |                  |
| Wellbore Sections   |           |                              |                    |                         |                    |                         |                    |                  |
| Section Des   |           |                              | Size (in)          |                         | Act Top, MD (ftKB) |                         | Act Btm, MD (ftKB) |                  |
| SURFACE   |           |                              | 12 1/4             |                         | 8.0                |                         | 504.0              |                  |
| PRODUCTION  |           |                              | 7 7/8              |                         | 504.0              |                         | 7,405.0            |                  |
| Zone Statuses   |           |                              |                    |                         |                    |                         |                    |                  |
| Zone Name   |           | Status Date                  | Status             | Fluid Type              |                    | Job                     |                    |                  |
|   |           |                              |                    |                         |                    |                         |                    |                  |
| Casing Strings  |           |                              |                    |                         |                    |                         |                    |                  |
| Csg Des   |           | Run Date                     | OD (in)            | WV/Len (lb/ft)          | Grade              | Top, MD (ftKB)          | MD (ftKB)          |                  |
| Surface   |           | 1/3/1983                     | 8 5/8              | 20.40                   |                    | 8.0                     | 504.0              |                  |
| Production  |           | 1/10/1983                    |                    |                         |                    |                         | 7,405.0            |                  |
| Cement  |           |                              |                    |                         |                    |                         |                    |                  |
| Des   |           |                              |                    |                         | Top (ftKB)         |                         | Btm (ftKB)         |                  |
| SURFACE CASING CEMENT   |           |                              |                    |                         | 8.0                |                         | 504.0              |                  |
| CEMENT PLUG   |           |                              |                    |                         | 2,788.0            |                         | 3,018.0            |                  |
| CEMENT PLUG   |           |                              |                    |                         | 4,642.0            |                         | 4,792.0            |                  |
| Cement Plug   |           |                              |                    |                         | 7.9                |                         | 622.0              |                  |
| Tubing Components   |           |                              |                    |                         |                    |                         |                    |                  |
| Item Des  |           |                              | OD (in)            | Wt (lb/ft)              | Grade              | Jts                     | Len (ft)           |                  |
|   |           |                              |                    |                         |                    |                         |                    |                  |
| Perforation Data  |           |                              |                    |                         |                    |                         |                    |                  |
| Zone  |           | Bnch/St g                    | Entered Shot Total | Top (ftKB)              |                    | Btm (ftKB)              |                    | Date             |
|   |           |                              |                    |                         |                    |                         |                    |                  |
|   |           |                              |                    |                         |                    |                         |                    |                  |
| Other In Hole   |           |                              |                    |                         |                    |                         |                    |                  |
| Run Date  |           | Des                          |                    |                         | OD (in)            | Top (ftKB)              |                    | Btm (ftKB)       |
|   |           |                              |                    |                         |                    |                         |                    |                  |
|   |           |                              |                    |                         |                    |                         |                    |                  |
| Logs  |           |                              |                    |                         |                    |                         |                    |                  |
| Date  |           | Type                         |                    |                         |                    | Top, MD (ftKB)          |                    | Btm, MD (ftKB)   |
| 1/18/1983   |           | COMPENSATED NEUTRON          |                    |                         |                    | 3,550.0                 |                    | 7,402.0          |
| 1/18/1983   |           | CYBERLOOK                    |                    |                         |                    | 3,595.0                 |                    | 7,370.0          |
| 1/18/1983   |           | INDUCTION                    |                    |                         |                    | 510.0                   |                    | 7,399.0          |
|   |           |                              |                    |                         |                    |                         |                    |                  |