

PROCEED IN A WESTERLY DIRECTION FROM HEREFORD COLORADO ALONG COUNTY ROAD 136 APPROXIMATELY 3.6 MILES TO THE JUNCTION OF THIS ROAD AND AN EXISTING ROAD TO THE NORTH; TURN RIGHT AND PROCEED IN A NORTHERLY DIRECTION APPROXIMATELY 294' TO THE EXISTING LOCATION.

TOTAL DISTANCE FROM HEREFORD, COLORADO TO THE EXISTING LOCATION IS APPROXIMATELY 3.7 MILES

EOG RESOURCES, INC.

**FOX CREEK 25 SESE
SECTION 25, T12N, R63W, 6th P.M.
SE 1/4 SE 1/4**



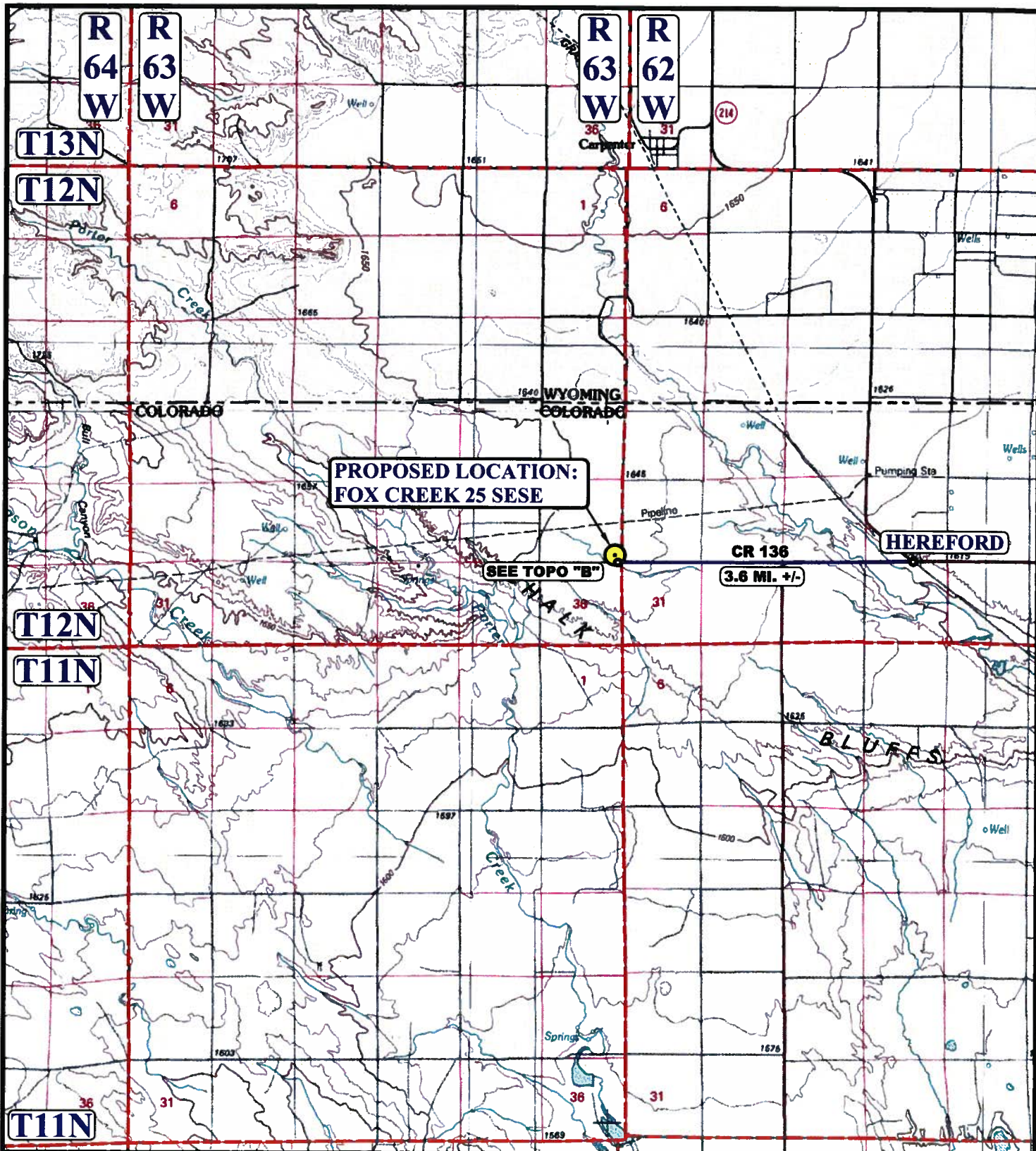
UELS, LLC
Corporate Office * 85 South 200 East
Vernal, UT 84078 * (435) 789-1017

DRAWN BY: J.D.J.

DATE DRAWN: 11-12-14

REVISED: 00-00-00

ROAD DESCRIPTION



LEGEND:

 **PROPOSED LOCATION**



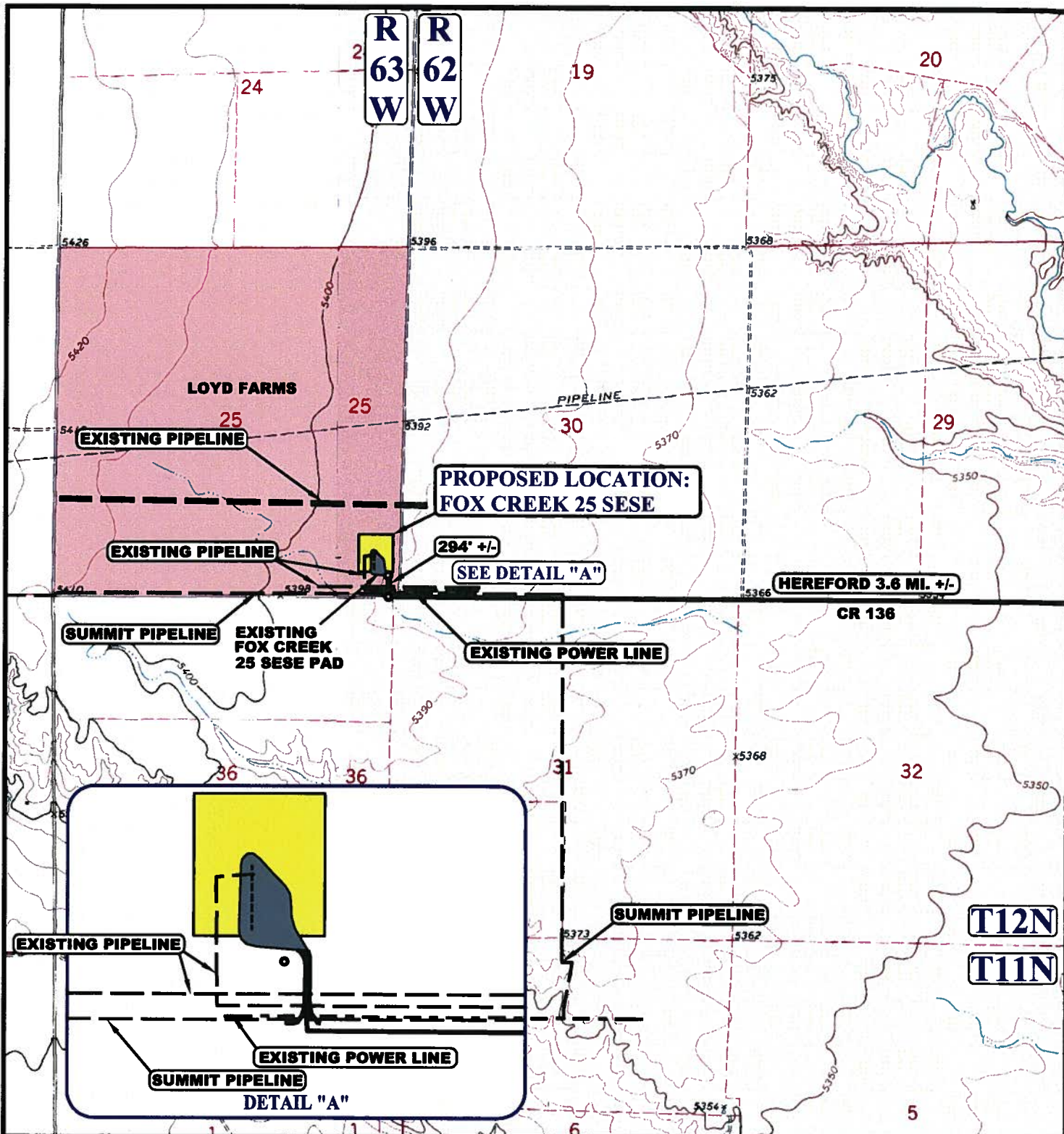
EOG RESOURCES, INC.

FOX CREEK 25 SESE
SECTION 25, T12N, R63W, 6th P.M.
SE 1/4 SE 1/4



UELS, LLC
 Corporate Office * 85 South 200 East
 Vernal, UT 84078 * (435) 789-1017

DRAWN BY: J.D.J.	DATE DRAWN: 11-12-14
SCALE: 1:100,000	REVISED: 00-00-00
ACCESS ROAD MAP	TOPO A



NOTE: PARCEL DATA SHOWN HAS BEEN OBTAINED FROM VARIOUS SOURCES AND SHOULD BE USED FOR MAPPING, GRAPHIC AND PLANNING PURPOSES ONLY. NO WARRANTY IS MADE BY UTAH ENGINEERING AND LAND SURVEYING (UELS) FOR ACCURACY OF THE PARCEL DATA.

LEGEND:

— EXISTING ROAD
 --- EXISTING POWER LINE
 - - - EXISTING PIPELINE

EOG RESOURCES, INC.

FOX CREEK 25 SESE
SECTION 25, T12N, R63W, 6th P.M.
SE 1/4 SE 1/4



UELS, LLC
 Corporate Office * 85 South 200 East
 Vernal, UT 84078 * (435) 789-1017



DRAWN BY: J.D.J.	DATE DRAWN: 11-12-14
SCALE: 1" = 2000'	REVISED: 01-07-15 K.W.
ACCESS ROAD MAP	TOPO B