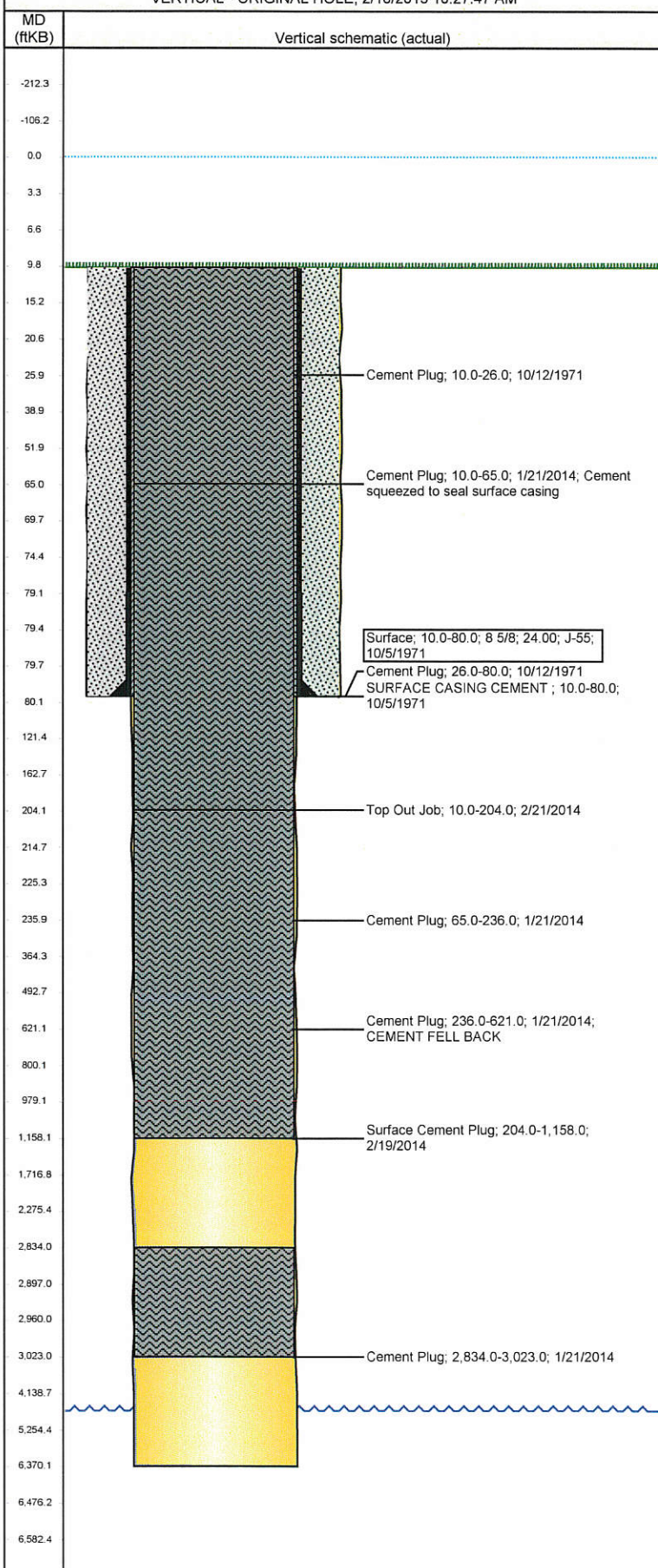


Well Name: BRADBURY 01 API 07362

VERTICAL - ORIGINAL HOLE, 2/18/2015 10:27:47 AM



Well Header			
API	Business Unit	District	Well Config
05-123-07362	DJ BASIN	15	VERTICAL
Original KB Elevation (ft)	KB - GL / MSL (ftKB)	Spud Date	P & A Date
4,688.00	10.00	10/5/1971	2/21/2014
Comment			
WBI RE- ENTRY P&A CHARGED TO: CASTOR FEDERAL LD15-74 HN. AFE: 139532			
Directions To Well			
FROM WCR127 & WCR 104 (NORTH OF NEW RAYMER) GO NORTH 0.7 mi, GO EAST 0.3 mi. SOUTH TOWARD NEW LOCATION. AT CATTLE GUARD GO WEST ON TWO TRACK AROUND LOCATION TO IT'S SOUTH EAST CORNER TO TWO TRACK 0.4 mi INTO LOCATION			
Current PBTD (ftKB)			
Bottom Hole Location			
North-South Distance (ft)	From N or S Line	East-West Distance (ft)	From E or W Line
Plug Back Total Depths			
Date	Depth (ftKB)	Method	Com
Wellbore Sections			
Section Des	Size (in)	Act Top, MD (ftKB)	Act Btm, MD (ftKB)
SURFACE	12 1/4	10.0	80.0
OPENHOLE	7 7/8	80.0	6,370.0
Zone Statuses			
Zone Name	Status Date	Status	Fluid Type
Casing Strings			
Csg Des	Run Date	OD (in)	Wt/Len (lb/ft)
Surface	10/5/1971	8 5/8	24.00
Cement			
Des	Top (ftKB)		Btm (ftKB)
SURFACE CASING CEMENT	10.0		80.0
Cement Plug	26.0		80.0
Cement Plug	10.0		26.0
Cement Plug	10.0		65.0
Cement Plug	65.0		236.0
Cement Plug	236.0		621.0
Cement Plug	2,834.0		3,023.0
Surface Cement Plug	204.0		1,158.0
Top Out Job	10.0		204.0
Tubing Components			
Item Des	OD (in)	Wt (lb/ft)	Grade
Perforation Data			
Zone	Bnch/St g	Entered Shot Total	Top (ftKB)
Other In Hole			
Run Date	Des		OD (in)
Logs			
Date	Type		Top, MD (ftKB)
10/11/1971	COMPENSATED DENSITY		5,450.0
10/11/1971	INDUCTION		90.0