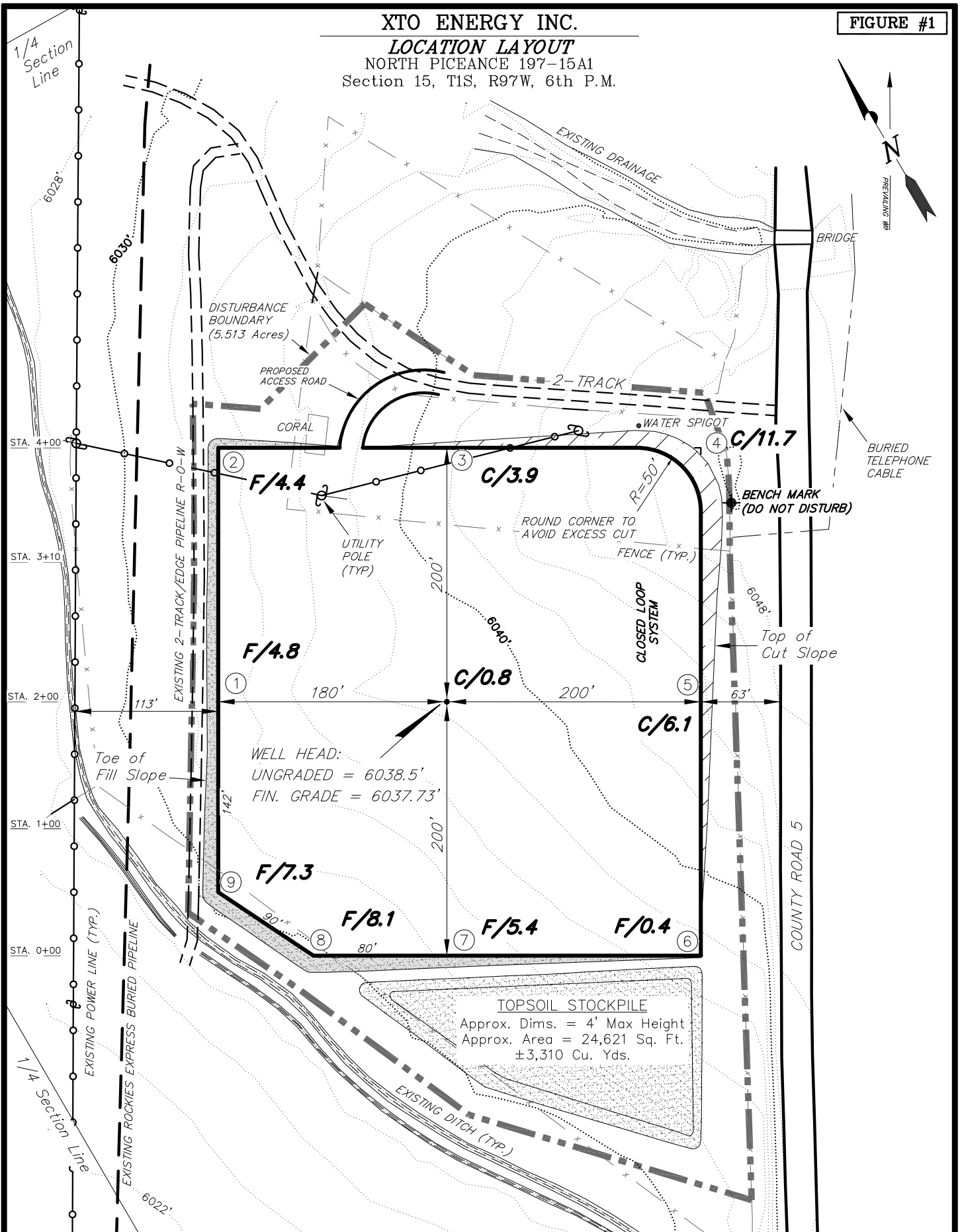


XTO ENERGY INC.

LOCATION LAYOUT

NORTH PICEANCE 197-15A1
Section 15, T1S, R97W, 6th P.M.

FIGURE #1



SURVEYED BY: Q.M.	DATE SURVEYED: 12-02-14
DRAWN BY: L.C.S.	DATE DRAWN: 12-10-14
SCALE: 1" = 100'	REVISED:

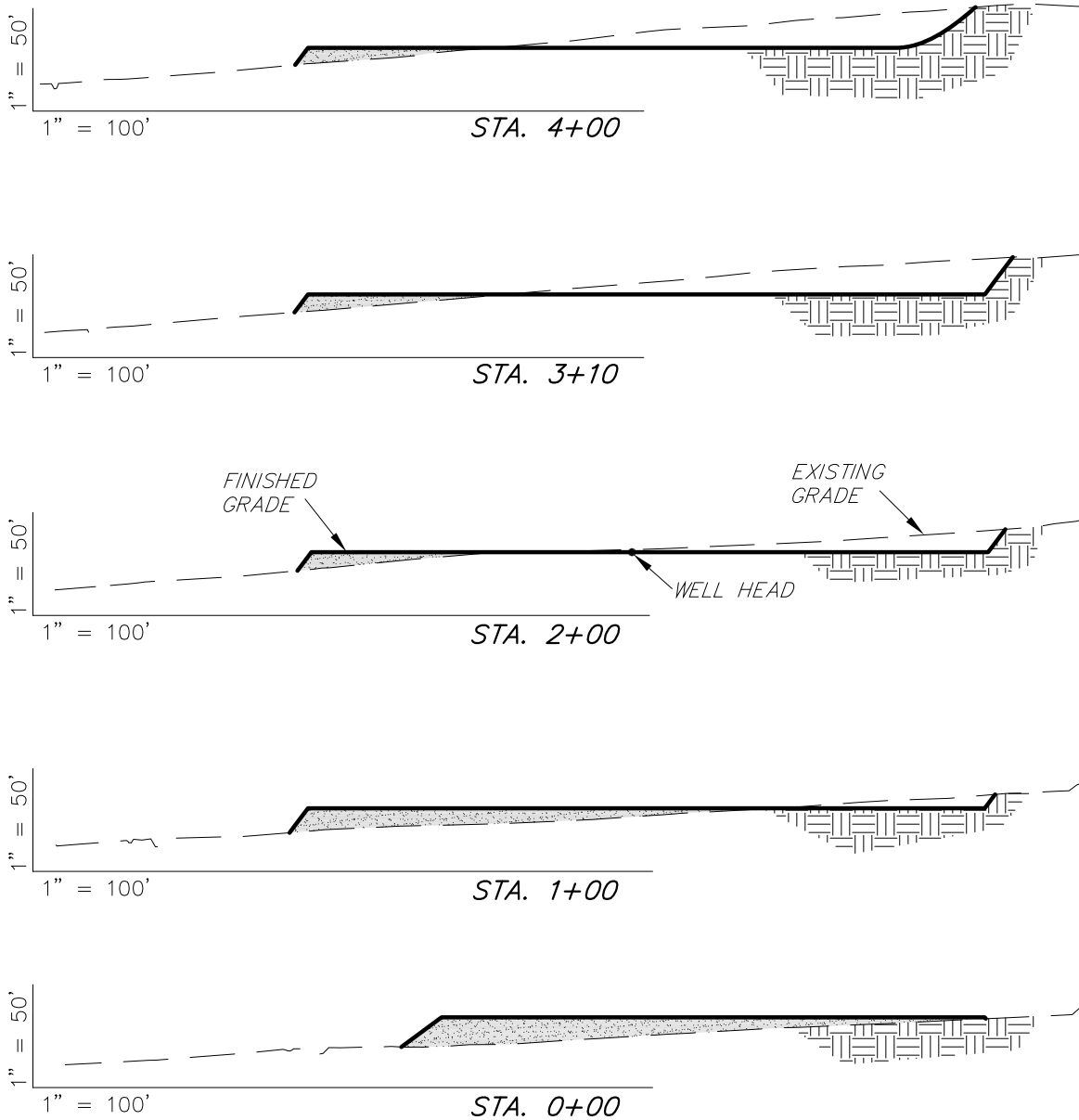
Tri State
Land Surveying, Inc.
180 NORTH VERNAL AVE. VERNAL, UTAH 84078
(435) 781-2501

SHEET
2

XTO ENERGY INC.

FIGURE #2

CROSS SECTIONS
NORTH PICEANCE 197-15A1
Section 15, T1S, R97W, 6th P.M.



NOTE:
UNLESS OTHERWISE NOTED
CUT & FILL SLOPES ARE AT 1.5:1

ESTIMATED EARTHWORK QUANTITIES (No Shrink or swell adjustments have been used) (Expressed in Cubic Yards)				
ITEM	CUT	FILL	6" TOPSOIL	EXCESS
PAD	10,590	10,590	Topsoil is not included in Pad Cut	0
PIT	NA	NA		NA
TOTALS	10,590	10,590	3,010	0

SURVEYED BY: Q.M.	DATE SURVEYED: 12-02-14
DRAWN BY: L.C.S.	DATE DRAWN: 12-10-14
SCALE: 1" = 100'	REVISED:

Tri State
Land Surveying, Inc.
180 NORTH VERNAL AVE. VERNAL, UTAH 84078
(435) 781-2501

SHEET
3