

February 2, 2015



410 17th Street, Suite 1500
Denver, CO 80202
(720) 440-6100 phone
(720) 279-2331 fax

Bonanzacrk.com

Colorado Oil and Gas Conservation Commission
The Chancery Building
1120 Lincoln Street, Suite 801
Denver, CO 80203

Attn: Matthew Lepore, Director

Re: Notice of 318A.a.(4).D Well Proposal
Antelope E-A-21HNB
SHL: SWSW 507' FSL & 864' FWL, Section 21, Township 5N, Range 62W
Top of Production: SWSW 631' FSL & 50' FWL, Section 21-T5N-R62W
Bottom of Production: NWNW 470' FNL & 50' FWL, Section 21-T5N-R62W, Weld
County, Colorado

Director Lepore:

Bonanza Creek Energy Operating Company, LLC. (Bonanza) intends to permit, drill and operate the referenced Niobrara Horizontal Well. As defined by Colorado Oil and Gas Conservation Commission (COGCC) Rule 318A.a.(4)D., Bonanza proposes the following wellbore spacing unit:

W/2W/2 Sec. 21-T5N-R62W 6th PM, Weld County, CO – containing 160 Acres more or less
E/2E/2 Sec. 20-T5N-R62W 6th PM, Weld County, CO – containing 160 Acres more or less

Bonanza has notified the other owners in the unit and no objections were received. Copies of the notifications are maintained in Bonanza's files.

Bonanza respectfully requests that you review the enclosed wellbore spacing unit documentation and approve the referenced Application for Permit to Drill.

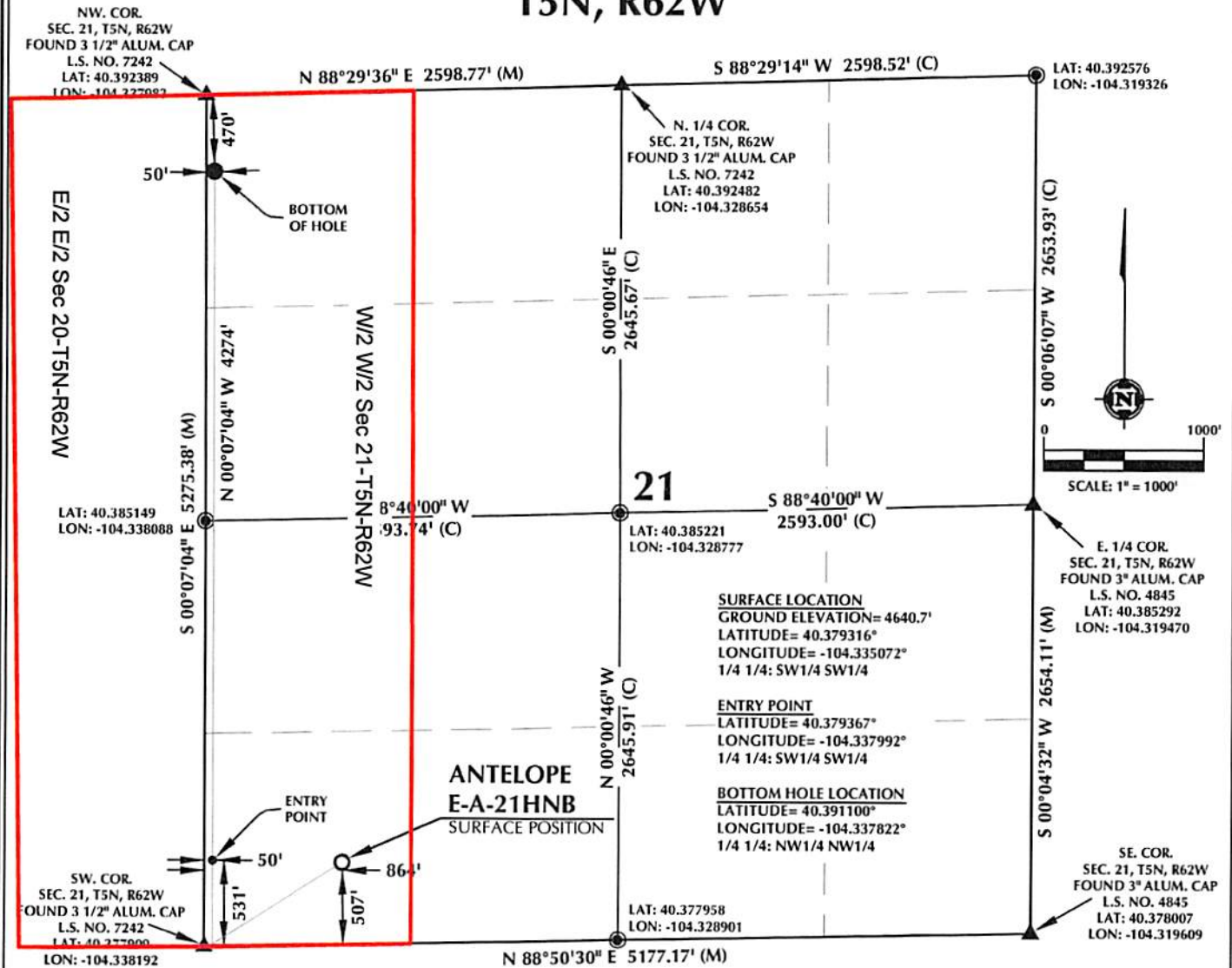
Sincerely,

Julie L. Vigil

Sr. Regulatory Specialist

BONANZA CREEK ENERGY OPERATING COMPANY, LLC.

T5N, R62W



NOTES:

- ▲ INDICATES SECTION CORNER
- INDICATES CALCULATED CORNER
- DRAWING LATITUDE AND LONGITUDE COORDINATES ARE NAD83 (CORS 96)(EPOCH:2002)
- ELEVATION BASED ON NAVD88 (GEOID09)
- BASIS OF BEARING DERIVED FROM COLORADO COORDINATE

CERTIFICATE OF SURVEYOR:

THIS IS TO CERTIFY THAT THE ABOVE PLAT WAS PREPARED FROM FIELD NOTES OF ACTUAL SURVEY MADE BY ME OR UNDER MY SUPERVISION AND THAT THE SAME ARE TRUE AND CORRECT TO THE BEST OF MY KNOWLEDGE AND BELIEF.

NEAREST CULTURAL ITEMS:

BUILDING: 5280'+
BUILDING UNIT: 5280'+
HIGH OCCUPANCY BUILDING UNIT: 5280'+
DESIGNATED OUTSIDE ACTIVITY AREA: 5280'+



Wellbore Spacing Unit Outline



Wellbore Spacing Unit Map

17 December 2014 ksc

Antelope E-A-21HNB
W/2 W/2 Sec 21-T5N-R62W 6th PM
E/2 E/2 Sec 20-T5N-R62W 6th PM
Weld County, Colorado