

OPERATOR: **WPX ENERGY**

WELL NAME: BCU 542-30-198
FIELD NAME: BARCUS CREEK
DRILLING RIG: CYCLONE 29
API #: 05-103-11996

LOCATION: SEC. 30 T 1N R 98W
SURFACE HOLE: 2063' FSL , 2135' FEL
BOTTOM HOLE: 2411' FSL , 650' FEL
SCALE: 1"=100'



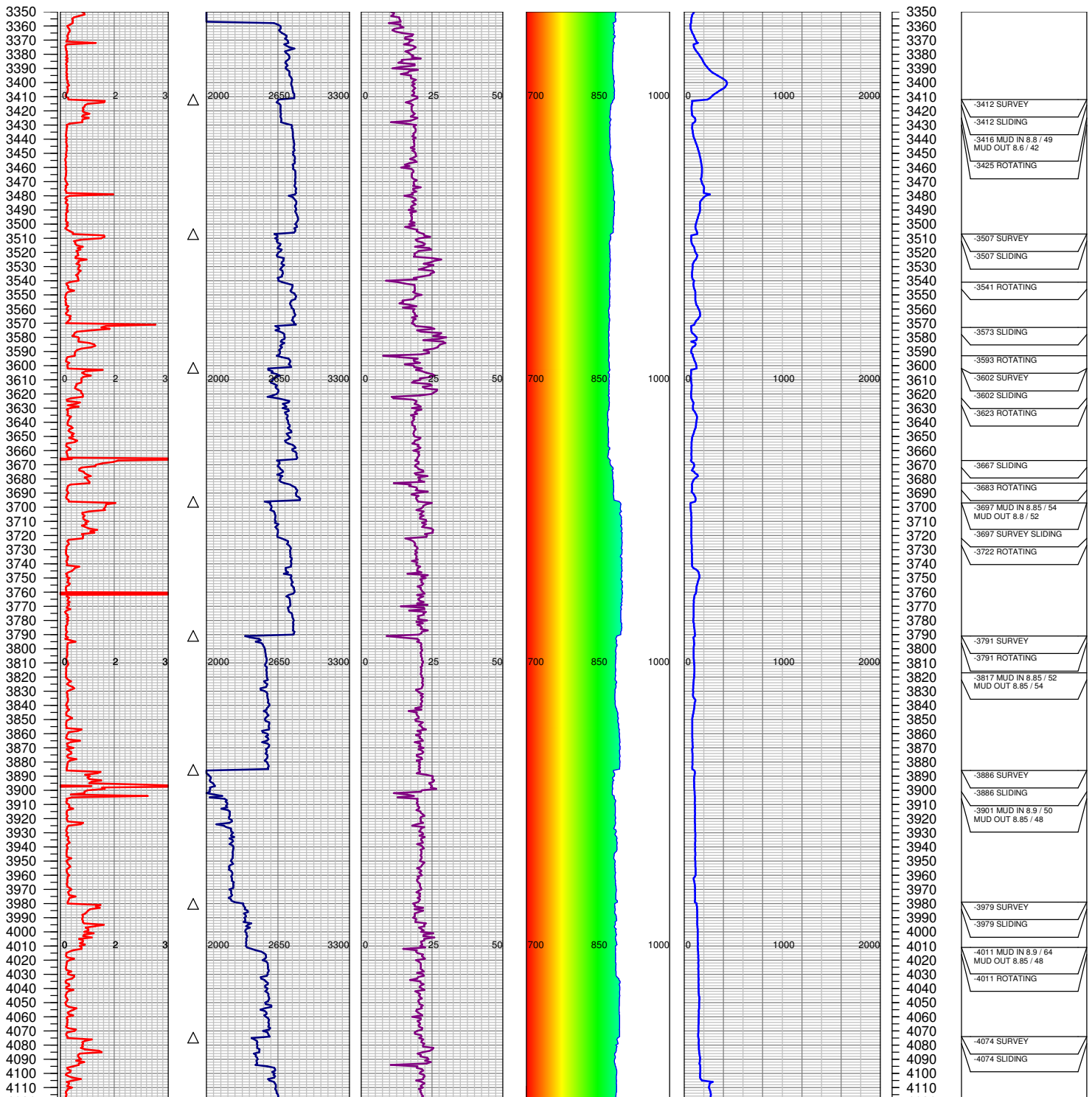
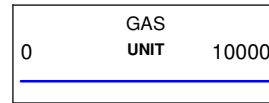
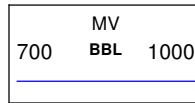
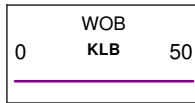
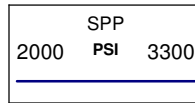
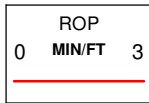
533 Bogart Lane, Unit A
Grand Junction, CO 81505
Office (970) 424-5162

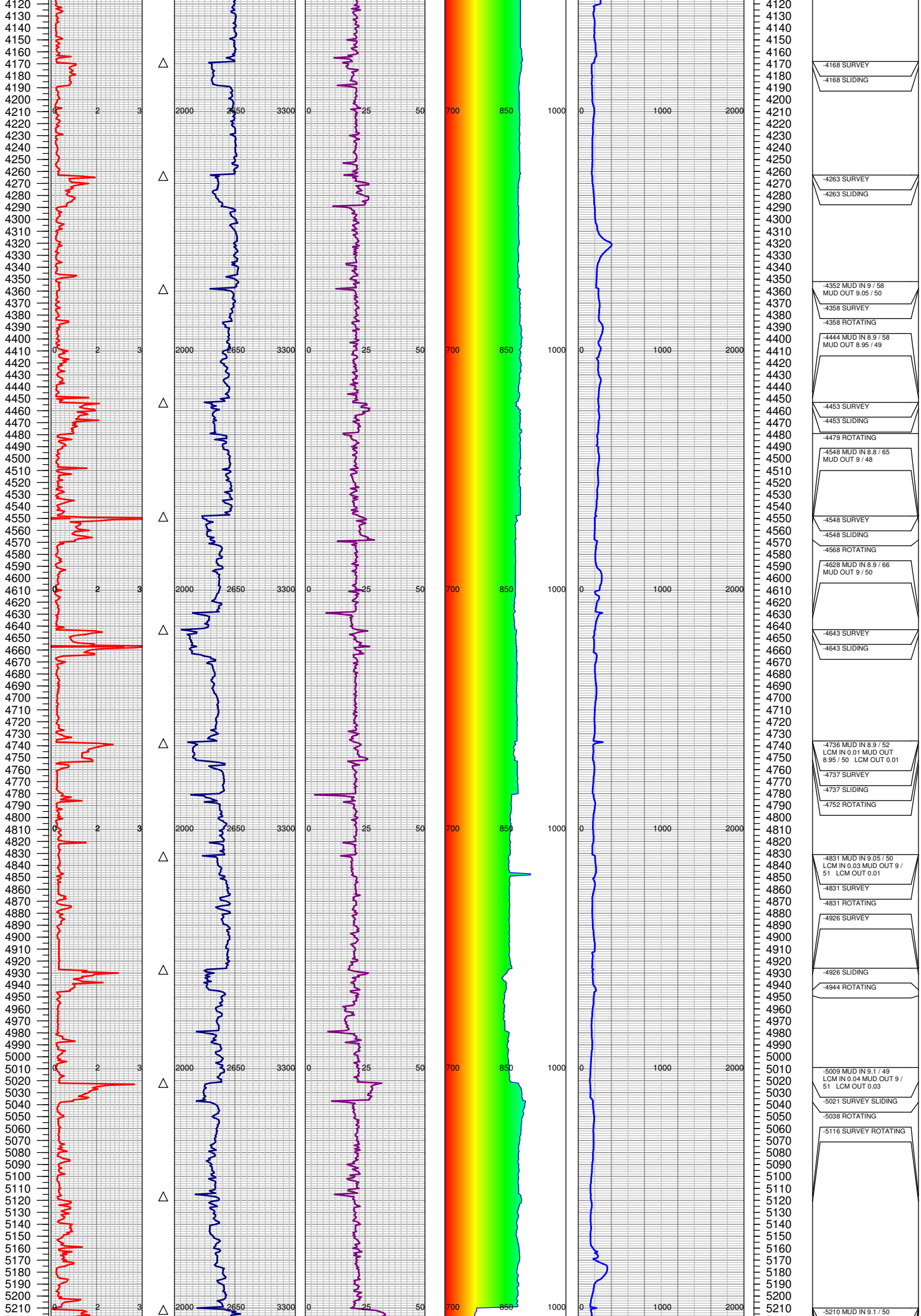
BCU 542-30-198

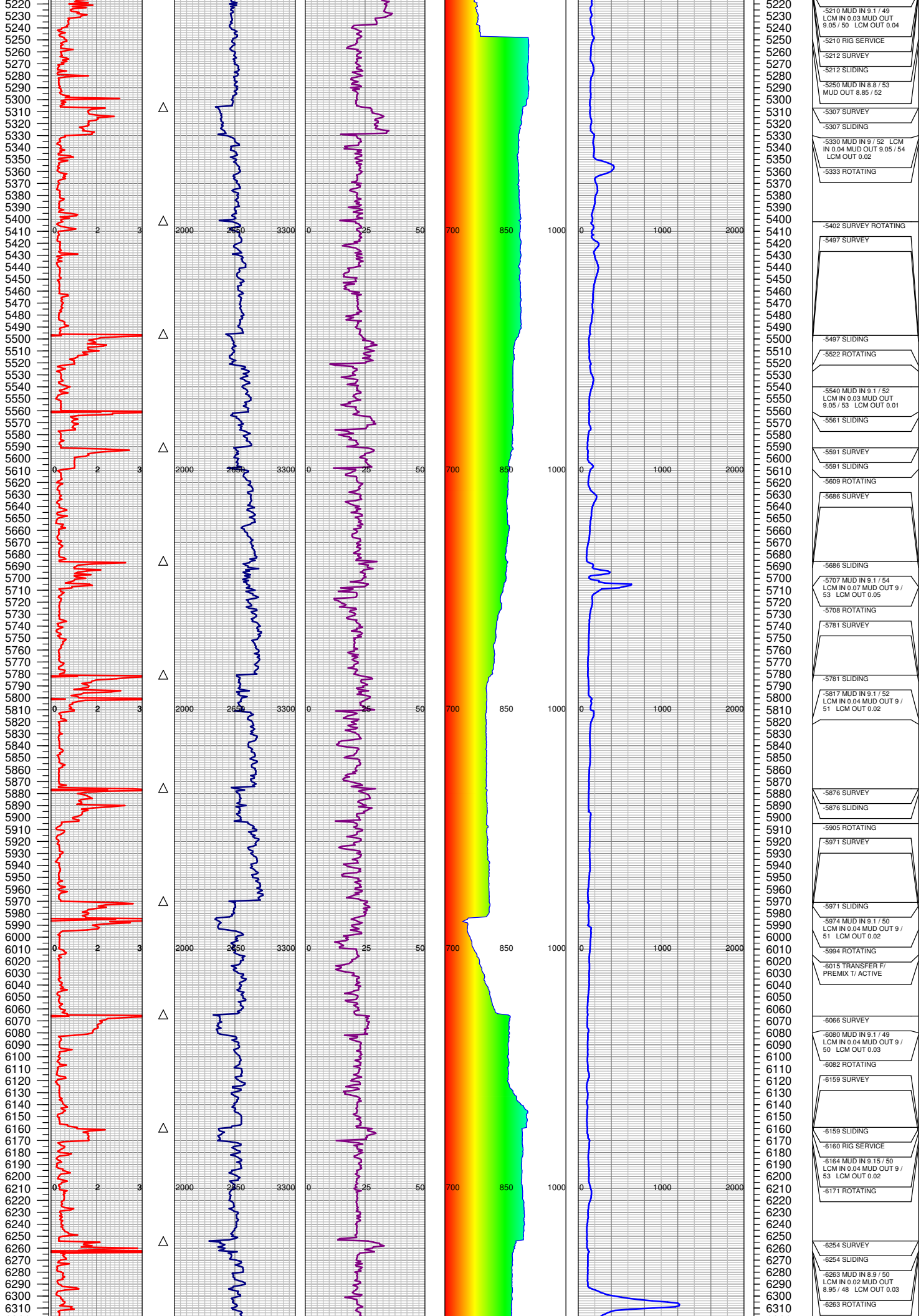
COUNTY: RIO BLANCO
STATE: COLORADO
DRILLING FLUID: LSND
LOGGER: LUKE DAVENPORT

GROUND ELEVATION: 6738'
KELLY BUSHING: 6759'
TVD VS. MD = -169'
DEPTHS LOGGED: 3350' - 11027'

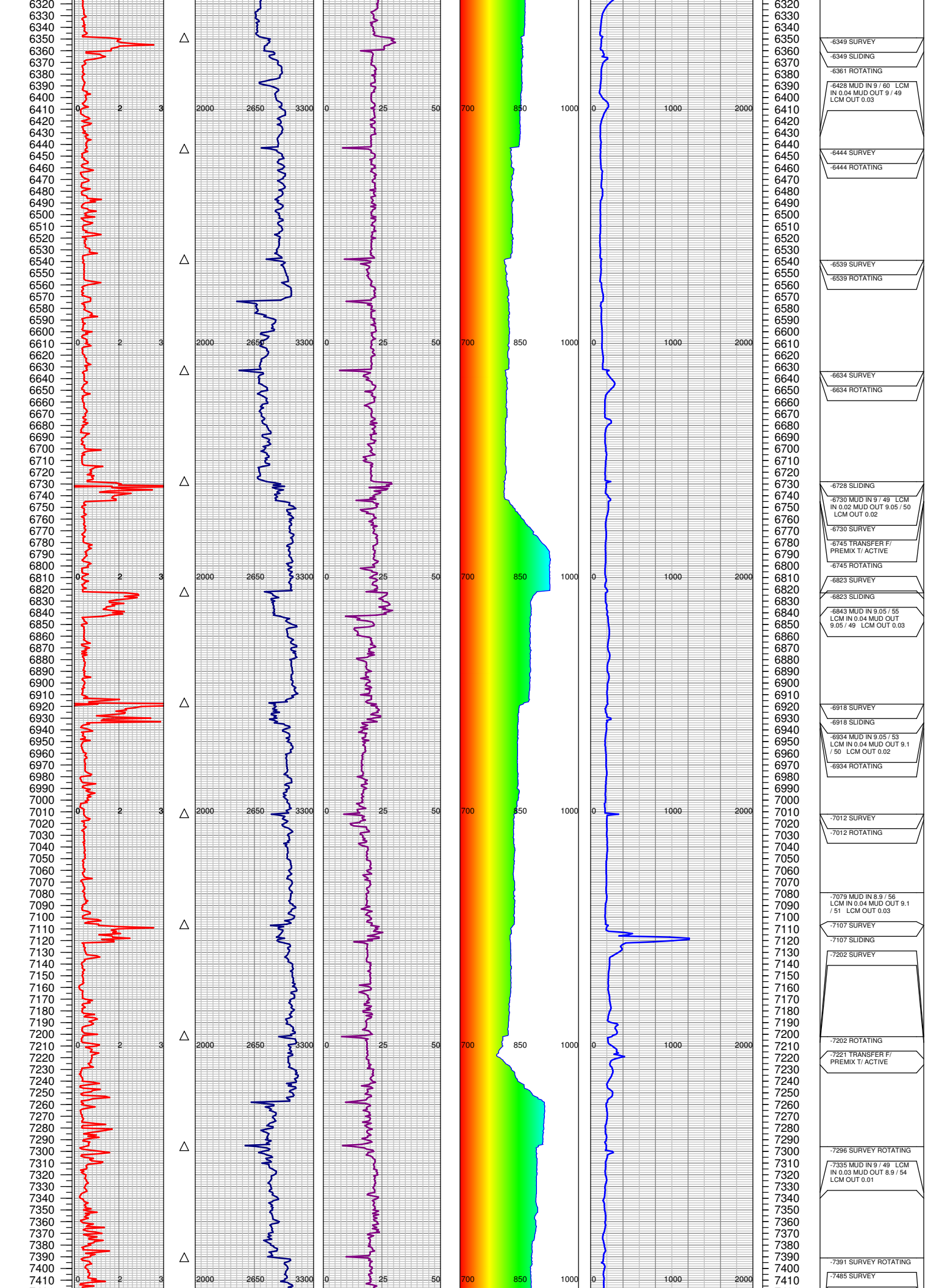
SPUD DATE: 8/31/2014
FGS BEGIN LOGGING: 9/3/2014
TD DATE: 9/8/2014
DATES LOGGED: 9/3/2014 - 9/8/2014

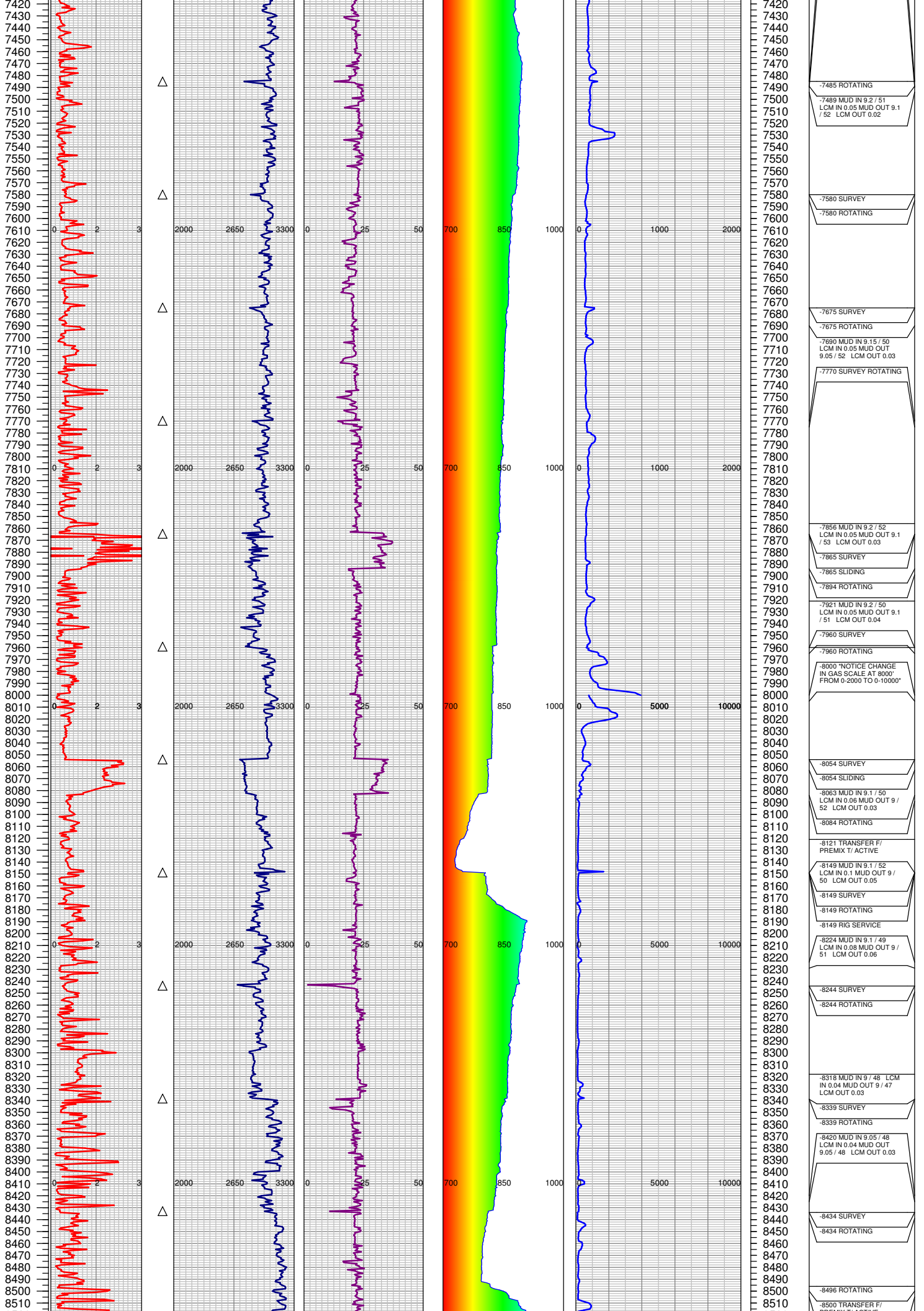


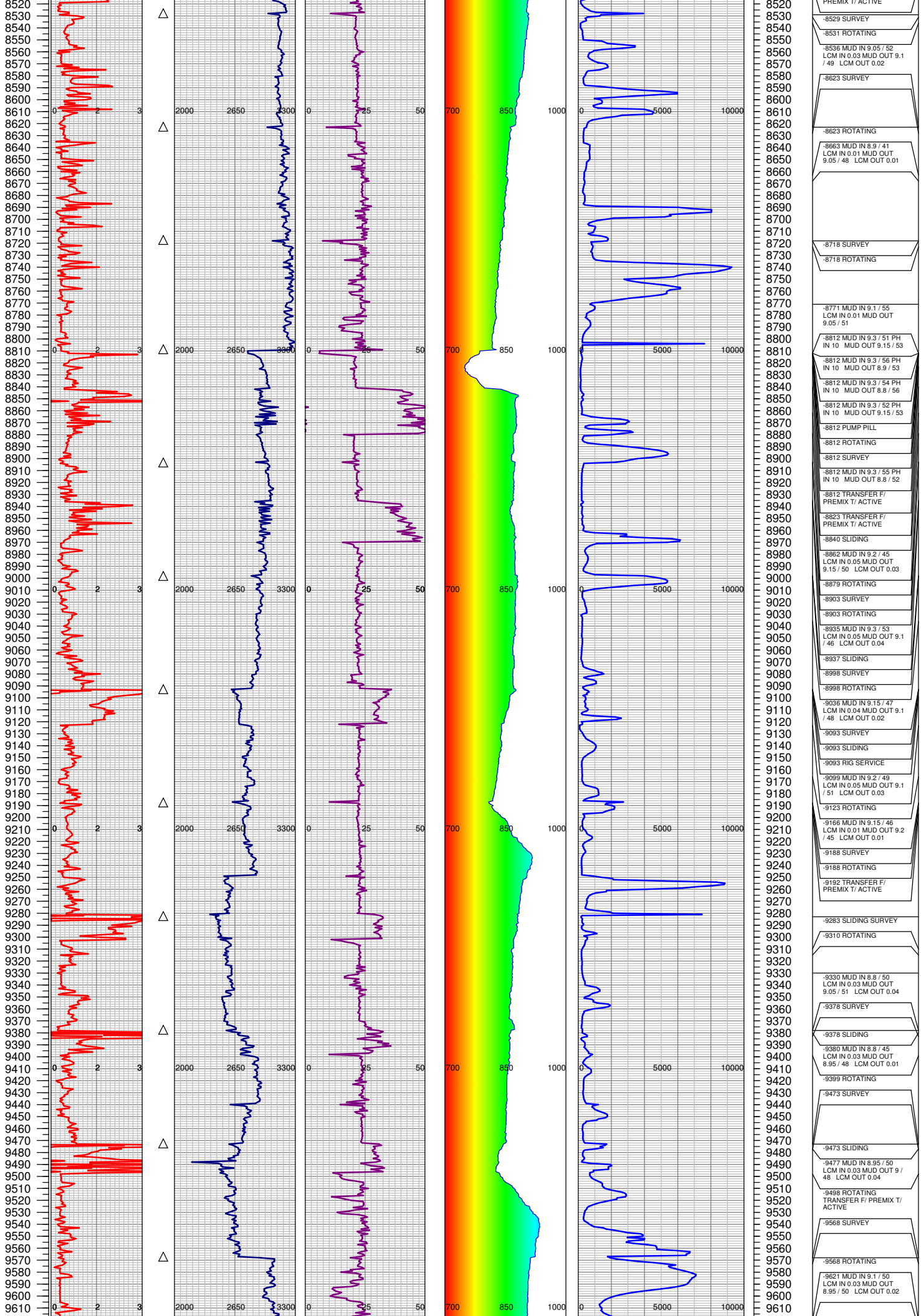




5220	-5210 MUD IN 9.1 / 49 LCM IN 0.03 MUD OUT 9.05 / 50 LCM OUT 0.04
5230	-5210 RIG SERVICE
5240	-5212 SURVEY
5250	-5212 SLIDING
5260	-5250 MUD IN 8.8 / 53 MUD OUT 8.85 / 52
5270	
5280	-5307 SURVEY
5290	-5307 SLIDING
5300	-5330 MUD IN 9 / 52 LCM IN 0.04 MUD OUT 9.05 / 54 LCM OUT 0.02
5310	-5333 ROTATING
5320	
5330	
5340	
5350	
5360	
5370	
5380	
5390	
5400	-5402 SURVEY ROTATING
5410	-5497 SURVEY
5420	
5430	
5440	
5450	
5460	
5470	
5480	
5490	
5500	-5497 SLIDING
5510	-5522 ROTATING
5520	
5530	
5540	-5540 MUD IN 9.1 / 52 LCM IN 0.03 MUD OUT 9.05 / 53 LCM OUT 0.01
5550	-5561 SLIDING
5560	
5570	
5580	
5590	
5600	-5591 SURVEY
5610	-5591 SLIDING
5620	-5609 ROTATING
5630	-5686 SURVEY
5640	
5650	
5660	
5670	
5680	
5690	-5686 SLIDING
5700	-5707 MUD IN 9.1 / 54 LCM IN 0.07 MUD OUT 9 / 53 LCM OUT 0.05
5710	-5708 ROTATING
5720	
5730	-5781 SURVEY
5740	
5750	
5760	
5770	
5780	-5781 SLIDING
5790	
5800	-5817 MUD IN 9.1 / 52 LCM IN 0.04 MUD OUT 9 / 51 LCM OUT 0.02
5810	
5820	
5830	
5840	
5850	
5860	
5870	
5880	-5876 SURVEY
5890	-5876 SLIDING
5900	
5910	-5905 ROTATING
5920	-5971 SURVEY
5930	
5940	
5950	
5960	
5970	-5971 SLIDING
5980	
5990	-5974 MUD IN 9.1 / 50 LCM IN 0.04 MUD OUT 9 / 51 LCM OUT 0.02
6000	-5994 ROTATING
6010	
6020	-6015 TRANSFER F/ PREMIX T/ ACTIVE
6030	
6040	
6050	
6060	
6070	-6066 SURVEY
6080	-6080 MUD IN 9.1 / 49 LCM IN 0.04 MUD OUT 9 / 50 LCM OUT 0.03
6090	-6082 ROTATING
6100	
6110	-6159 SURVEY
6120	
6130	
6140	
6150	
6160	-6159 SLIDING
6170	-6160 RIG SERVICE
6180	
6190	-6164 MUD IN 9.15 / 50 LCM IN 0.04 MUD OUT 9 / 53 LCM OUT 0.02
6200	-6171 ROTATING
6210	
6220	
6230	
6240	
6250	-6254 SURVEY
6260	-6254 SLIDING
6270	
6280	-6263 MUD IN 8.9 / 50 LCM IN 0.02 MUD OUT 8.95 / 48 LCM OUT 0.03
6290	-6263 ROTATING
6300	
6310	







8520	PREMIX T/ ACTIVE
8530	-8529 SURVEY
8540	-8531 ROTATING
8550	-8536 MUD IN 9.05 / 52
8560	LCM IN 0.03 MUD OUT 9.1
8570	/ 49 LCM OUT 0.02
8580	-8623 SURVEY
8590	
8600	
8610	
8620	-8623 ROTATING
8630	
8640	-8663 MUD IN 8.9 / 41
8650	LCM IN 0.01 MUD OUT
8660	9.05 / 48 LCM OUT 0.01
8670	
8680	
8690	
8700	
8710	-8718 SURVEY
8720	-8718 ROTATING
8730	
8740	
8750	
8760	
8770	-8771 MUD IN 9.1 / 55
8780	LCM IN 0.01 MUD OUT
8790	9.05 / 51
8800	-8812 MUD IN 9.3 / 51 PH
8810	IN 10 MUD OUT 9.15 / 53
8820	-8812 MUD IN 9.3 / 56 PH
8830	IN 10 MUD OUT 8.9 / 53
8840	-8812 MUD IN 9.3 / 54 PH
8850	IN 10 MUD OUT 8.8 / 56
8860	-8812 MUD IN 9.3 / 52 PH
8870	IN 10 MUD OUT 9.15 / 53
8880	-8812 PUMP PILL
8890	-8812 ROTATING
8900	-8812 SURVEY
8910	-8812 MUD IN 9.3 / 55 PH
8920	IN 10 MUD OUT 8.8 / 52
8930	-8812 TRANSFER F/
8940	PREMIX T/ ACTIVE
8950	-8823 TRANSFER F/
8960	PREMIX T/ ACTIVE
8970	-8840 SLIDING
8980	-8862 MUD IN 9.2 / 45
8990	LCM IN 0.05 MUD OUT
9000	9.15 / 50 LCM OUT 0.03
9010	-8879 ROTATING
9020	-8903 SURVEY
9030	-8903 ROTATING
9040	-8935 MUD IN 9.3 / 53
9050	LCM IN 0.05 MUD OUT 9.1
9060	/ 46 LCM OUT 0.04
9070	-8937 SLIDING
9080	-8998 SURVEY
9090	-8998 ROTATING
9100	-9036 MUD IN 9.15 / 47
9110	LCM IN 0.04 MUD OUT 9.1
9120	/ 48 LCM OUT 0.02
9130	-9093 SURVEY
9140	-9093 SLIDING
9150	-9093 RIG SERVICE
9160	-9099 MUD IN 9.2 / 49
9170	LCM IN 0.05 MUD OUT 9.1
9180	/ 51 LCM OUT 0.03
9190	-9123 ROTATING
9200	-9166 MUD IN 9.15 / 46
9210	LCM IN 0.01 MUD OUT 9.2
9220	/ 45 LCM OUT 0.01
9230	-9188 SURVEY
9240	-9188 ROTATING
9250	-9192 TRANSFER F/
9260	PREMIX T/ ACTIVE
9270	
9280	
9290	-9283 SLIDING SURVEY
9300	-9310 ROTATING
9310	
9320	
9330	-9330 MUD IN 8.8 / 50
9340	LCM IN 0.03 MUD OUT
9350	9.05 / 51 LCM OUT 0.04
9360	-9378 SURVEY
9370	
9380	-9378 SLIDING
9390	-9380 MUD IN 8.8 / 45
9400	LCM IN 0.03 MUD OUT
9410	8.95 / 48 LCM OUT 0.01
9420	-9399 ROTATING
9430	-9473 SURVEY
9440	
9450	
9460	
9470	-9473 SLIDING
9480	-9477 MUD IN 8.95 / 50
9490	LCM IN 0.03 MUD OUT 9 /
9500	48 LCM OUT 0.04
9510	-9498 ROTATING
9520	TRANSFER F/ PREMIX T/
9530	ACTIVE
9540	-9568 SURVEY
9550	
9560	-9568 ROTATING
9570	
9580	-9621 MUD IN 9.1 / 50
9590	LCM IN 0.03 MUD OUT
9600	8.95 / 50 LCM OUT 0.02
9610	

