

K.P. KAUFFMAN CO INC

# SURVEY REPORT

SUCKLA-BROWN UNIT #1

2/5/2015



The **Ultimate Partner** In Wellbore Placement

CUSTOMER K.P. KAUFFMAN CO INC  
PROJECT SUCKLA-BROWN UNIT #1  
FIELD SPINDLE

SDI JOB NO. 251983  
SDI DISTRICT Casper  
SDI KIT/UNIT

### SITE INFORMATION

Site Name SUCKLA-BROWN UNIT #1  
Lat/Long  
Northing  
Easting

Section 10  
Township 1 N  
Range 67 W

### MAP INFORMATION

North Reference True North  
Grid Correction  
System  
Datum  
Map Zone



### WELL INFORMATION

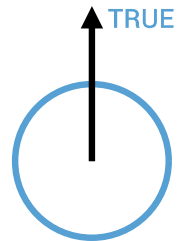
Lat/Long 40.07102° N, 104.86976° W  
Northing  
Easting  
UWI 05-123-07480

### DEPTH AND ELEVATION REFERENCE

Ground Level 5045 ft above Mean Sea Level  
Reference Datum GL  
Reference Height 0 ft above G.L.  
Reference Elevation 5045 ft

### VERTICAL SECTION REFERENCE

+N/-S 0 ft  
+E/-W 0 ft  
Proposal Direction  
Calculation Method Minimum Curvature



### LOCAL GRAVITY REFERENCE INFORMATION

Local Gravity 999.031 mG [computed]

### WELL NOTES

Survey Run in 4.5 Casing From 100'-4820'

### OPERATORS

C. JAKUES

SDI Operator Name (Printed)

SIGNATURE

DATE

MD	INC	AZIM	TVD	VS	+N/-S	+E/-W	DLS	CLOSURE DISTANCE	CLOSURE DIRECTION	COURSE LENGTH
ft	deg	deg	ft	ft	ft	ft	°/100ft	ft	deg	ft
0.00	0.00	0.00	0.00	0.00	0.00	0.00	Invalid	0.00	0.00	Invalid
98.65	0.37	0.26	98.65	-0.09	0.32	0.00	0.37	0.32	0.26	98.65
120.74	0.25	333.76	120.74	-0.11	0.43	-0.02	0.81	0.43	357.35	22.09
148.01	0.21	329.46	148.01	-0.09	0.53	-0.07	0.19	0.53	352.26	27.28
170.27	0.15	351.58	170.27	-0.08	0.59	-0.10	0.39	0.60	350.74	22.26
197.59	0.18	341.75	197.59	-0.09	0.67	-0.11	0.14	0.68	350.23	27.32
224.80	0.36	334.10	224.79	-0.07	0.78	-0.17	0.68	0.80	348.09	27.21
246.46	0.39	335.55	246.46	-0.05	0.91	-0.23	0.15	0.94	346.11	21.66
273.59	0.09	264.97	273.59	-0.02	0.99	-0.28	1.36	1.03	344.00	27.14
295.27	0.16	229.64	295.26	0.02	0.97	-0.32	0.46	1.03	341.55	21.67
322.07	0.17	305.81	322.07	0.08	0.97	-0.38	0.74	1.04	338.43	26.80
349.35	0.21	294.52	349.34	0.14	1.02	-0.46	0.22	1.12	335.54	27.28
374.72	0.20	289.26	374.72	0.21	1.05	-0.55	0.09	1.18	332.49	25.38
397.59	0.25	290.06	397.59	0.28	1.08	-0.63	0.23	1.25	329.68	22.87
424.57	0.24	296.71	424.57	0.37	1.13	-0.74	0.11	1.35	326.74	26.98
446.53	0.31	274.72	446.53	0.46	1.15	-0.84	0.55	1.42	323.95	21.96
473.43	0.29	283.14	473.42	0.58	1.17	-0.98	0.17	1.53	320.23	26.90
496.00	0.29	271.25	496.00	0.69	1.19	-1.09	0.27	1.61	317.47	22.58
522.23	0.33	262.58	522.23	0.83	1.18	-1.23	0.23	1.70	313.78	26.23
549.20	0.33	266.61	549.20	0.98	1.16	-1.39	0.09	1.81	310.05	26.97
571.15	0.31	268.45	571.14	1.10	1.16	-1.51	0.11	1.90	307.55	21.94
597.97	0.29	279.62	597.97	1.23	1.17	-1.65	0.23	2.02	305.34	26.82
624.92	0.32	260.82	624.91	1.37	1.17	-1.79	0.39	2.14	303.11	26.94
646.19	0.36	266.38	646.19	1.49	1.15	-1.92	0.23	2.24	301.04	21.28
673.16	0.37	272.94	673.15	1.65	1.15	-2.09	0.16	2.39	298.91	26.96
694.82	0.30	270.23	694.81	1.77	1.16	-2.22	0.30	2.50	297.58	21.66
721.89	0.29	267.81	721.89	1.91	1.15	-2.36	0.06	2.62	296.11	27.07
748.99	0.29	271.60	748.98	2.04	1.15	-2.49	0.07	2.75	294.83	27.09
774.78	0.24	265.77	774.77	2.16	1.15	-2.61	0.21	2.86	293.78	25.79
797.72	0.25	270.62	797.71	2.25	1.15	-2.71	0.10	2.95	292.94	22.94
824.65	0.26	279.27	824.64	2.36	1.16	-2.83	0.15	3.06	292.25	26.94
846.55	0.29	276.26	846.55	2.46	1.17	-2.94	0.16	3.16	291.77	21.90

MD	INC	AZIM	TVD	VS	+N/-S	+E/-W	DLS	CLOSURE DISTANCE	CLOSURE DIRECTION	COURSE LENGTH
ft	deg	deg	ft	ft	ft	ft	°/100ft	ft	deg	ft
873.31	0.19	284.61	873.30	2.56	1.19	-3.05	0.41	3.27	291.36	26.76
895.95	0.26	266.36	895.94	2.64	1.20	-3.14	0.46	3.36	290.91	22.64
921.62	0.27	281.89	921.61	2.75	1.21	-3.25	0.28	3.47	290.35	25.67
947.52	0.23	273.72	947.51	2.85	1.22	-3.36	0.21	3.58	289.97	25.90
974.51	0.31	279.34	974.50	2.97	1.24	-3.49	0.32	3.70	289.53	26.98
995.76	0.38	270.63	995.75	3.09	1.25	-3.62	0.40	3.83	289.03	21.25
1022.51	0.34	276.75	1022.50	3.24	1.26	-3.78	0.21	3.99	288.39	26.76
1048.38	0.37	270.46	1048.37	3.39	1.27	-3.94	0.19	4.14	287.83	25.87
1074.76	0.18	290.71	1074.75	3.50	1.28	-4.07	0.77	4.26	287.52	26.38
1097.42	0.32	285.27	1097.41	3.58	1.31	-4.16	0.59	4.36	287.52	22.66
1123.79	0.51	259.39	1123.77	3.76	1.31	-4.35	1.00	4.54	286.78	26.36
1146.30	0.42	271.82	1146.29	3.94	1.29	-4.53	0.60	4.71	285.96	22.52
1172.78	0.50	256.64	1172.77	4.15	1.27	-4.74	0.54	4.90	285.02	26.48
1198.31	0.46	265.68	1198.30	4.36	1.24	-4.95	0.33	5.10	284.05	25.53
1224.53	0.51	259.23	1224.52	4.58	1.21	-5.17	0.27	5.31	283.17	26.22
1246.81	0.41	287.61	1246.80	4.74	1.21	-5.34	1.10	5.47	282.81	22.28
1272.80	0.43	272.07	1272.78	4.91	1.25	-5.52	0.45	5.66	282.70	25.98
1299.79	0.48	270.54	1299.77	5.11	1.25	-5.74	0.17	5.87	282.29	27.00
1322.32	0.46	272.63	1322.30	5.28	1.25	-5.92	0.11	6.05	281.96	22.52
1348.14	0.50	265.47	1348.12	5.49	1.25	-6.14	0.28	6.26	281.52	25.83
1374.75	0.43	281.70	1374.73	5.69	1.26	-6.35	0.56	6.47	281.24	26.61
1397.24	0.48	270.49	1397.22	5.85	1.28	-6.53	0.47	6.65	281.09	22.49
1422.81	0.45	274.58	1422.79	6.05	1.29	-6.73	0.20	6.86	280.83	25.57
1449.49	0.47	274.51	1449.47	6.25	1.31	-6.95	0.07	7.07	280.64	26.69
1470.80	0.47	270.13	1470.78	6.41	1.31	-7.12	0.17	7.24	280.44	21.31
1497.08	0.48	275.65	1497.06	6.62	1.32	-7.34	0.18	7.46	280.22	26.28
1523.60	0.41	285.55	1523.57	6.80	1.36	-7.54	0.39	7.66	280.22	26.52
1549.12	0.48	268.97	1549.09	6.98	1.38	-7.73	0.56	7.85	280.13	25.52
1571.58	0.50	261.14	1571.55	7.16	1.37	-7.92	0.32	8.04	279.78	22.46
1597.73	0.43	279.45	1597.70	7.36	1.36	-8.13	0.63	8.25	279.52	26.15
1623.31	0.43	286.12	1623.29	7.53	1.41	-8.32	0.20	8.44	279.59	25.58
1649.63	0.42	289.27	1649.60	7.69	1.47	-8.51	0.10	8.63	279.78	26.31

MD	INC	AZIM	TVD	VS	+N/-S	+E/-W	DLS	CLOSURE DISTANCE	CLOSURE DIRECTION	COURSE LENGTH
ft	deg	deg	ft	ft	ft	ft	°/100ft	ft	deg	ft
1671.43	0.41	274.56	1671.40	7.83	1.50	-8.66	0.49	8.79	279.82	21.81
1696.98	0.40	273.91	1696.95	8.00	1.51	-8.84	0.06	8.97	279.70	25.55
1722.92	0.45	262.45	1722.89	8.18	1.50	-9.03	0.38	9.16	279.46	25.94
1749.19	0.43	260.74	1749.15	8.38	1.48	-9.23	0.09	9.35	279.08	26.27
1774.48	0.40	265.14	1774.45	8.56	1.45	-9.41	0.17	9.52	278.77	25.29
1795.90	0.48	258.64	1795.87	8.72	1.43	-9.58	0.45	9.68	278.48	21.42
1822.25	0.51	251.80	1822.21	8.95	1.37	-9.80	0.25	9.89	277.96	26.35
1847.46	0.59	249.94	1847.42	9.19	1.29	-10.03	0.31	10.11	277.33	25.21
1873.94	0.62	252.43	1873.90	9.47	1.20	-10.29	0.14	10.36	276.65	26.48
1895.11	0.62	254.77	1895.07	9.70	1.14	-10.51	0.12	10.57	276.17	21.17
1921.35	0.68	252.92	1921.31	10.00	1.05	-10.79	0.27	10.85	275.57	26.24
1947.67	0.69	257.93	1947.63	10.31	0.97	-11.10	0.23	11.14	275.01	26.32
1973.10	0.63	255.48	1973.06	10.61	0.91	-11.39	0.26	11.42	274.55	25.43
1999.15	0.66	255.82	1999.11	10.90	0.83	-11.67	0.08	11.70	274.08	26.05
2021.28	0.66	256.28	2021.24	11.15	0.77	-11.92	0.03	11.94	273.71	22.13
2046.21	0.69	253.82	2046.16	11.45	0.70	-12.20	0.16	12.22	273.27	24.92
2072.10	0.66	258.32	2072.05	11.75	0.62	-12.50	0.23	12.51	272.85	25.89
2098.43	0.64	265.98	2098.38	12.05	0.58	-12.79	0.34	12.81	272.60	26.33
2124.36	0.68	261.76	2124.31	12.34	0.55	-13.09	0.23	13.10	272.40	25.93
2146.52	0.68	264.07	2146.47	12.60	0.52	-13.35	0.13	13.36	272.22	22.16
2172.57	0.63	258.83	2172.52	12.89	0.47	-13.64	0.31	13.65	271.99	26.05
2198.01	0.58	256.83	2197.95	13.16	0.42	-13.91	0.20	13.91	271.72	25.43
2224.05	0.61	263.28	2223.99	13.43	0.37	-14.17	0.28	14.18	271.50	26.04
2246.10	0.76	257.33	2246.04	13.69	0.33	-14.43	0.75	14.43	271.29	22.05
2271.58	0.74	265.84	2271.52	14.02	0.28	-14.76	0.44	14.76	271.07	25.48
2297.34	0.80	266.44	2297.28	14.35	0.25	-15.11	0.23	15.11	270.96	25.76
2323.48	0.88	271.62	2323.41	14.72	0.25	-15.49	0.41	15.49	270.91	26.14
2349.06	0.97	268.10	2348.99	15.11	0.25	-15.90	0.42	15.90	270.88	25.58
2374.17	1.04	266.71	2374.09	15.54	0.23	-16.34	0.32	16.34	270.79	25.11
2399.99	1.12	263.98	2399.90	16.01	0.19	-16.83	0.36	16.83	270.63	25.82
2420.97	1.14	266.95	2420.89	16.42	0.15	-17.24	0.29	17.24	270.51	20.99
2446.54	1.20	258.47	2446.45	16.93	0.09	-17.75	0.71	17.75	270.28	25.57

MD	INC	AZIM	TVD	VS	+N/-S	+E/-W	DLS	CLOSURE DISTANCE	CLOSURE DIRECTION	COURSE LENGTH
ft	deg	deg	ft	ft	ft	ft	°/100ft	ft	deg	ft
2472.64	1.41	256.62	2472.55	17.52	-0.04	-18.33	0.84	18.33	269.86	26.10
2497.72	1.37	254.98	2497.62	18.13	-0.19	-18.92	0.25	18.92	269.42	25.08
2523.41	1.45	255.23	2523.30	18.76	-0.35	-19.53	0.32	19.54	268.96	25.69
2549.10	1.39	256.20	2548.98	19.40	-0.51	-20.15	0.23	20.16	268.55	25.69
2574.39	1.40	254.15	2574.27	20.01	-0.67	-20.74	0.20	20.76	268.15	25.29
2599.67	1.44	252.61	2599.54	20.64	-0.85	-21.34	0.23	21.36	267.72	25.28
2621.31	1.40	250.75	2621.17	21.17	-1.02	-21.85	0.30	21.88	267.34	21.64
2646.88	1.45	252.59	2646.73	21.81	-1.22	-22.46	0.28	22.49	266.90	25.57
2672.81	1.24	250.88	2672.66	22.42	-1.41	-23.04	0.81	23.08	266.51	25.93
2698.61	1.34	248.62	2698.44	23.00	-1.61	-23.58	0.44	23.64	266.10	25.80
2723.52	1.27	248.18	2723.35	23.57	-1.82	-24.11	0.30	24.18	265.69	24.91
2749.43	1.14	244.84	2749.25	24.11	-2.03	-24.61	0.56	24.70	265.27	25.90
2770.76	1.08	248.03	2770.58	24.52	-2.20	-24.99	0.42	25.09	264.97	21.33
2796.06	0.94	241.20	2795.87	24.96	-2.39	-25.39	0.75	25.51	264.62	25.30
2821.97	0.81	243.18	2821.78	25.35	-2.57	-25.74	0.50	25.87	264.29	25.91
2847.59	0.78	242.57	2847.40	25.70	-2.74	-26.06	0.11	26.20	264.01	25.62
2872.20	0.66	239.23	2872.01	26.00	-2.89	-26.33	0.54	26.49	263.75	24.61
2897.96	0.58	228.25	2897.77	26.26	-3.05	-26.55	0.55	26.73	263.45	25.76
2923.63	0.48	227.46	2923.44	26.48	-3.21	-26.73	0.39	26.92	263.16	25.67
2948.61	0.55	221.66	2948.41	26.67	-3.37	-26.88	0.36	27.09	262.86	24.97
2974.18	0.47	220.67	2973.98	26.87	-3.54	-27.03	0.30	27.27	262.54	25.57
2999.43	0.35	220.30	2999.24	27.02	-3.68	-27.15	0.50	27.40	262.29	25.26
3024.11	0.41	213.58	3023.92	27.15	-3.81	-27.25	0.31	27.51	262.05	24.68
3049.64	0.34	221.71	3049.44	27.29	-3.94	-27.35	0.34	27.63	261.80	25.52
3074.92	0.29	216.52	3074.72	27.41	-4.05	-27.44	0.22	27.74	261.61	25.28
3099.27	0.24	210.30	3099.07	27.49	-4.14	-27.50	0.23	27.81	261.44	24.35
3124.88	0.25	213.31	3124.68	27.58	-4.23	-27.56	0.05	27.88	261.27	25.61
3149.62	0.03	242.11	3149.42	27.62	-4.28	-27.59	0.89	27.93	261.18	24.74
3174.29	0.11	130.22	3174.09	27.62	-4.30	-27.58	0.52	27.92	261.14	24.67
3199.80	0.26	82.04	3199.61	27.55	-4.31	-27.51	0.80	27.84	261.10	25.51
3220.92	0.32	93.22	3220.72	27.45	-4.30	-27.40	0.37	27.74	261.07	21.11
3249.70	0.33	83.57	3249.50	27.29	-4.30	-27.24	0.20	27.58	261.03	28.78

MD	INC	AZIM	TVD	VS	+N/-S	+E/-W	DLS	CLOSURE DISTANCE	CLOSURE DIRECTION	COURSE LENGTH
ft	deg	deg	ft	ft	ft	ft	°/100ft	ft	deg	ft
3271.04	0.35	90.37	3270.84	27.17	-4.29	-27.11	0.20	27.45	261.00	21.34
3296.29	0.34	86.68	3296.09	27.02	-4.29	-26.96	0.09	27.30	260.96	25.26
3322.38	0.31	88.61	3322.18	26.88	-4.28	-26.81	0.12	27.15	260.92	26.08
3346.98	0.19	69.51	3346.78	26.77	-4.27	-26.71	0.59	27.05	260.92	24.60
3372.17	0.22	59.40	3371.97	26.68	-4.23	-26.63	0.20	26.96	260.98	25.19
3397.27	0.17	40.63	3397.07	26.60	-4.17	-26.56	0.34	26.89	261.07	25.10
3421.56	0.16	52.77	3421.36	26.54	-4.13	-26.51	0.14	26.83	261.15	24.29
3446.78	0.11	50.90	3446.58	26.49	-4.09	-26.46	0.21	26.78	261.21	25.22
3472.28	0.05	150.63	3472.08	26.46	-4.09	-26.44	0.49	26.75	261.22	25.50
3497.36	0.02	358.62	3497.16	26.46	-4.09	-26.43	0.27	26.75	261.21	25.08
3522.80	0.18	231.58	3522.60	26.49	-4.11	-26.47	0.75	26.78	261.18	25.44
3548.24	0.18	217.57	3548.04	26.56	-4.16	-26.52	0.17	26.84	261.08	25.44
3572.82	0.32	217.81	3572.62	26.65	-4.25	-26.59	0.58	26.92	260.92	24.58
3597.90	0.28	219.41	3597.70	26.76	-4.35	-26.67	0.19	27.02	260.73	25.08
3623.39	0.29	201.92	3623.19	26.85	-4.46	-26.73	0.34	27.10	260.53	25.49
3647.54	0.38	223.23	3647.34	26.96	-4.57	-26.81	0.63	27.19	260.32	24.15
3672.02	0.35	218.96	3671.82	27.09	-4.69	-26.91	0.17	27.31	260.12	24.48
3696.57	0.52	222.51	3696.37	27.25	-4.83	-27.03	0.72	27.46	259.87	24.55
3721.05	0.36	230.35	3720.85	27.42	-4.96	-27.17	0.68	27.62	259.65	24.48
3749.94	0.52	242.16	3749.73	27.63	-5.08	-27.35	0.62	27.82	259.48	28.88
3774.87	0.36	261.57	3774.66	27.82	-5.14	-27.53	0.87	28.01	259.42	24.93
3799.90	0.41	262.25	3799.69	27.99	-5.17	-27.70	0.19	28.18	259.43	25.03
3823.98	0.41	260.96	3823.77	28.15	-5.19	-27.87	0.04	28.35	259.44	24.08
3848.86	0.42	257.52	3848.65	28.33	-5.23	-28.05	0.12	28.53	259.44	24.88
3873.88	0.39	276.59	3873.67	28.51	-5.24	-28.22	0.56	28.70	259.49	25.02
3897.91	0.24	285.81	3897.70	28.62	-5.21	-28.35	0.64	28.83	259.58	24.03
3922.77	0.29	315.07	3922.56	28.70	-5.16	-28.45	0.56	28.91	259.73	24.86
3947.18	0.31	349.14	3946.97	28.72	-5.05	-28.50	0.73	28.94	259.96	24.41
3971.33	0.12	10.46	3971.12	28.70	-4.96	-28.51	0.85	28.94	260.14	24.15
3996.09	0.23	43.80	3995.88	28.64	-4.89	-28.47	0.59	28.89	260.25	24.76
4024.98	0.32	56.26	4024.77	28.51	-4.81	-28.36	0.36	28.77	260.38	28.89
4049.19	0.30	79.93	4048.98	28.39	-4.76	-28.24	0.53	28.64	260.44	24.21



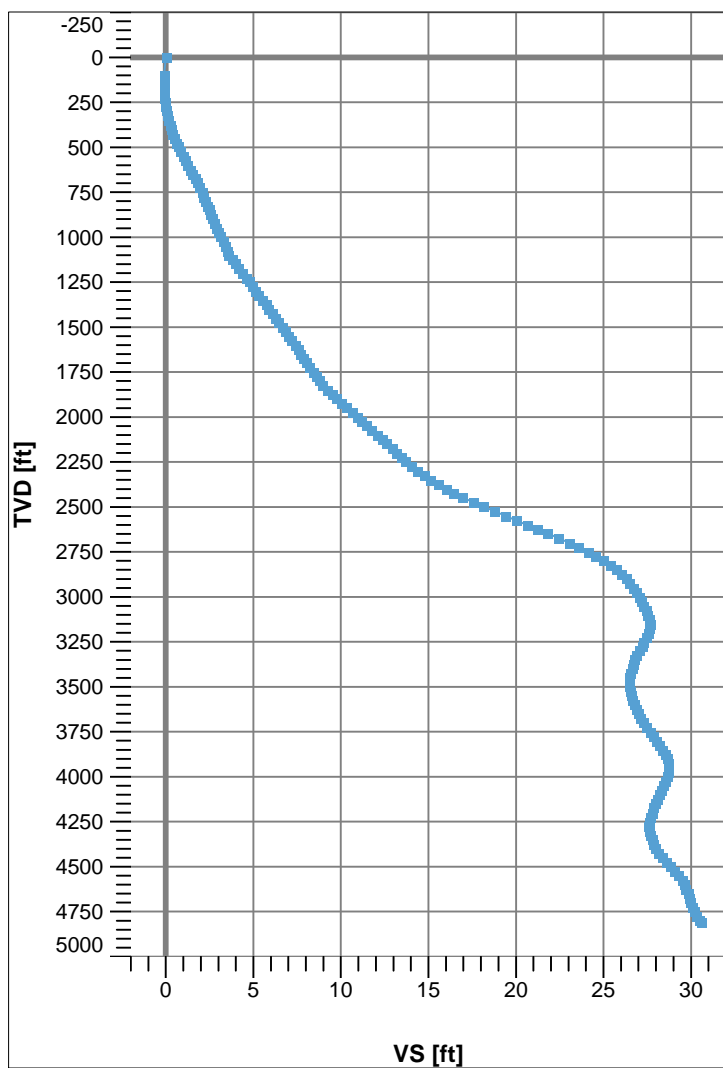
MD	INC	AZIM	TVD	VS	+N/-S	+E/-W	DLS	CLOSURE DISTANCE	CLOSURE DIRECTION	COURSE LENGTH
ft	deg	deg	ft	ft	ft	ft	°/100ft	ft	deg	ft
4073.89	0.24	57.70	4073.68	28.27	-4.72	-28.14	0.49	28.53	260.48	24.70
4098.63	0.26	94.71	4098.42	28.17	-4.70	-28.04	0.65	28.43	260.49	24.74
4122.44	0.37	92.01	4122.22	28.05	-4.70	-27.91	0.45	28.30	260.43	23.80
4146.43	0.21	90.46	4146.22	27.93	-4.71	-27.78	0.64	28.18	260.38	23.99
4171.02	0.27	113.88	4170.81	27.84	-4.73	-27.68	0.46	28.09	260.30	24.59
4199.10	0.36	151.09	4198.89	27.77	-4.84	-27.58	0.78	28.00	260.06	28.08
4224.53	0.32	93.64	4224.32	27.69	-4.91	-27.47	1.30	27.91	259.87	25.44
4249.18	0.40	121.46	4248.97	27.57	-4.96	-27.33	0.76	27.77	259.71	24.65
4273.60	0.59	180.36	4273.39	27.55	-5.13	-27.26	2.09	27.74	259.35	24.42
4298.93	0.45	173.59	4298.72	27.61	-5.36	-27.25	0.57	27.77	258.88	25.33
4323.99	0.66	187.70	4323.77	27.69	-5.60	-27.25	0.98	27.82	258.39	25.06
4348.48	0.57	178.97	4348.26	27.78	-5.86	-27.27	0.52	27.89	257.87	24.49
4374.10	0.52	172.13	4373.88	27.84	-6.10	-27.25	0.32	27.93	257.38	25.62
4399.39	1.00	192.70	4399.17	27.97	-6.43	-27.29	2.14	28.03	256.73	25.28
4423.18	0.80	191.90	4422.96	28.15	-6.80	-27.37	0.82	28.20	256.05	23.79
4447.72	0.76	199.70	4447.50	28.33	-7.12	-27.46	0.46	28.36	255.46	24.54
4472.62	0.78	207.79	4472.39	28.55	-7.42	-27.59	0.44	28.57	254.94	24.90
4496.70	0.76	212.37	4496.47	28.79	-7.70	-27.75	0.26	28.80	254.48	24.08
4521.53	0.54	223.56	4521.30	29.02	-7.93	-27.92	1.04	29.03	254.15	24.83
4545.95	0.58	231.58	4545.71	29.23	-8.09	-28.10	0.37	29.24	253.94	24.41
4573.95	0.48	241.92	4573.72	29.48	-8.23	-28.31	0.50	29.49	253.79	28.01
4598.50	0.22	300.06	4598.27	29.61	-8.26	-28.44	1.66	29.62	253.81	24.55
4623.06	0.17	272.50	4622.83	29.68	-8.23	-28.52	0.44	29.69	253.90	24.56
4647.39	0.47	224.22	4647.16	29.80	-8.30	-28.63	1.58	29.81	253.83	24.33
4673.16	0.04	201.49	4672.93	29.90	-8.39	-28.71	1.69	29.91	253.71	25.77
4698.39	0.36	191.59	4698.15	29.95	-8.47	-28.72	1.27	29.95	253.56	25.22
4722.33	0.38	213.87	4722.10	30.04	-8.61	-28.78	0.60	30.05	253.34	23.94
4748.11	0.27	226.50	4747.88	30.16	-8.73	-28.87	0.51	30.16	253.18	25.78
4772.77	0.19	240.84	4772.54	30.26	-8.79	-28.95	0.38	30.26	253.12	24.66
4799.32	0.81	219.33	4799.08	30.46	-8.95	-29.11	2.39	30.46	252.91	26.54
4809.07	0.66	209.32	4808.83	30.55	-9.05	-29.18	2.04	30.55	252.76	9.75





Name : Keeper Gyro Survey Wireline: Outrun  
Generated : 2/5/2015 22:25:26 Mountain Standard Time

VS View



Plan View

