

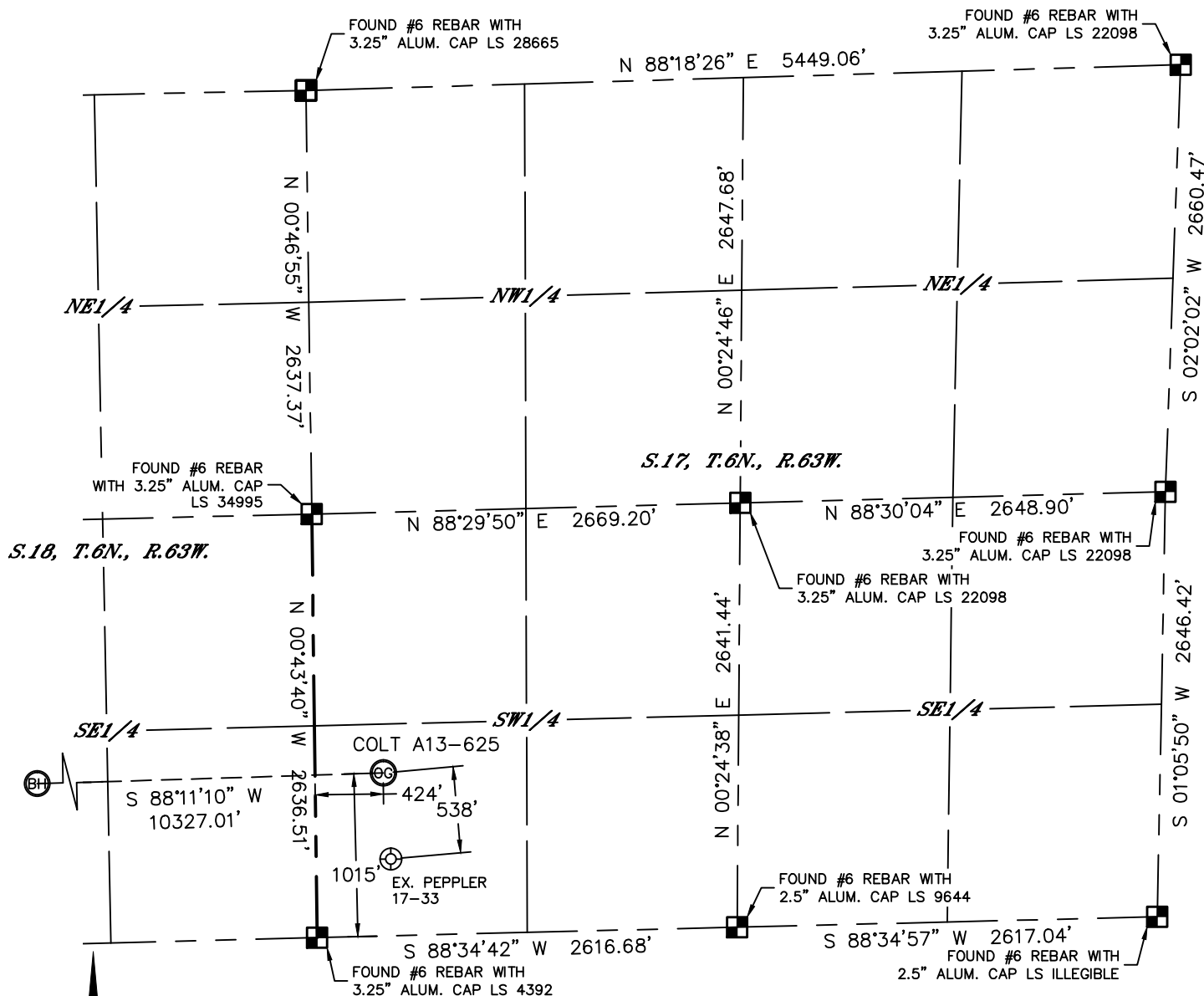


Lat40°, Inc. 6250 W. 10th Street, Unit 2, Greeley, CO 970-515-5294

# WELL LOCATION CERTIFICATE

THIS MAP DOES NOT REPRESENT A BOUNDARY SURVEY

SECTION: 17  
TOWNSHIP: 6N  
RANGE: 63W



In accordance with a request from Greg Wilson with Noble Energy Inc. Lat40°, Inc. has determined the surface location of the COLT A13-625 to be 1015' from the SOUTH line and 424' from the WEST line as measured at right angles from the section lines of Section 17, Township 6 North, Range 63 West and the bottom hole to be 925' from the SOUTH line and 535' from the WEST line as measured at right angles from the section lines of Section 13, Township 6 North, Range 64 West of the Sixth Principal Meridian, County of Weld, State of Colorado.

I hereby state that this Well Location Certificate was prepared by me, or under my direct supervision, that the fieldwork was completed on 7/24/2014, for and on behalf of Noble Energy Inc. That this is not a Land Survey Plat or an Improvement Survey Plat, and that it is not to be relied upon for establishment of fence, building, or other future improvement lines.

## NOTE:

- 1) Bearings shown are Grid Bearings of the Colorado State Plane Coordinate System, North Zone, North American Datum 1983. The lineal dimensions as contained herein are based upon the "U.S. Survey Foot."
- 2) Ground elevations are based on an observed GPS elevation (NAVD 1988 DATUM).
- 3) IMPROVEMENTS: See LOCATION DRAWING for all visible improvements within 500' of disturbed area.
- 4) SURFACE USE: CROP LAND
- 5) INSTRUMENT OPERATOR: WYATT HALL
- 6) NEAREST EXISTING WELL: PEPPLER 17-33, ±538' SE
- NEAREST CULTURAL ITEMS:  
BUILDING: ±1308' SW  
BUILDING UNIT: ±1308' SW  
HIGH OCCUPANCY BUILDING UNIT: 5280'+  
DESIGNATED OUTSIDE ACTIVITY AREA: 5280'+  
PUBLIC ROAD: ±1001' S (CR 68)  
ABOVEGROUND UTILITY: ±989' S  
RAILROAD: 5280'+  
PROPERTY LINE: ±424' W

## SURFACE LOCATION

LAT: 40.48205N  
LONG: 104.46880W  
PDOP: 1.7  
ELEV: 4665'  
1/4,1/4: SWSW

## BOTTOM HOLE

LAT: 40.48147N  
LONG: 104.50590W

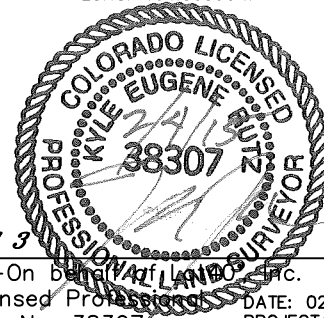
## LEGEND

- = ALIQUOT MONUMENT AS DESCRIBED  
○ = CALCULATED POSITION

## SHEET 1 OF 3

Kyle E. Rutz-On behalf of Lat40°, Inc.  
Colorado Licensed Professional  
Land Surveyor No. 38307

DATE: 02/04/2015  
PROJECT#: 2013082



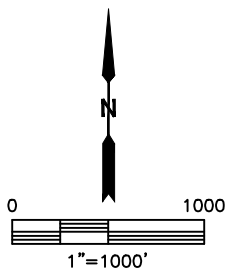
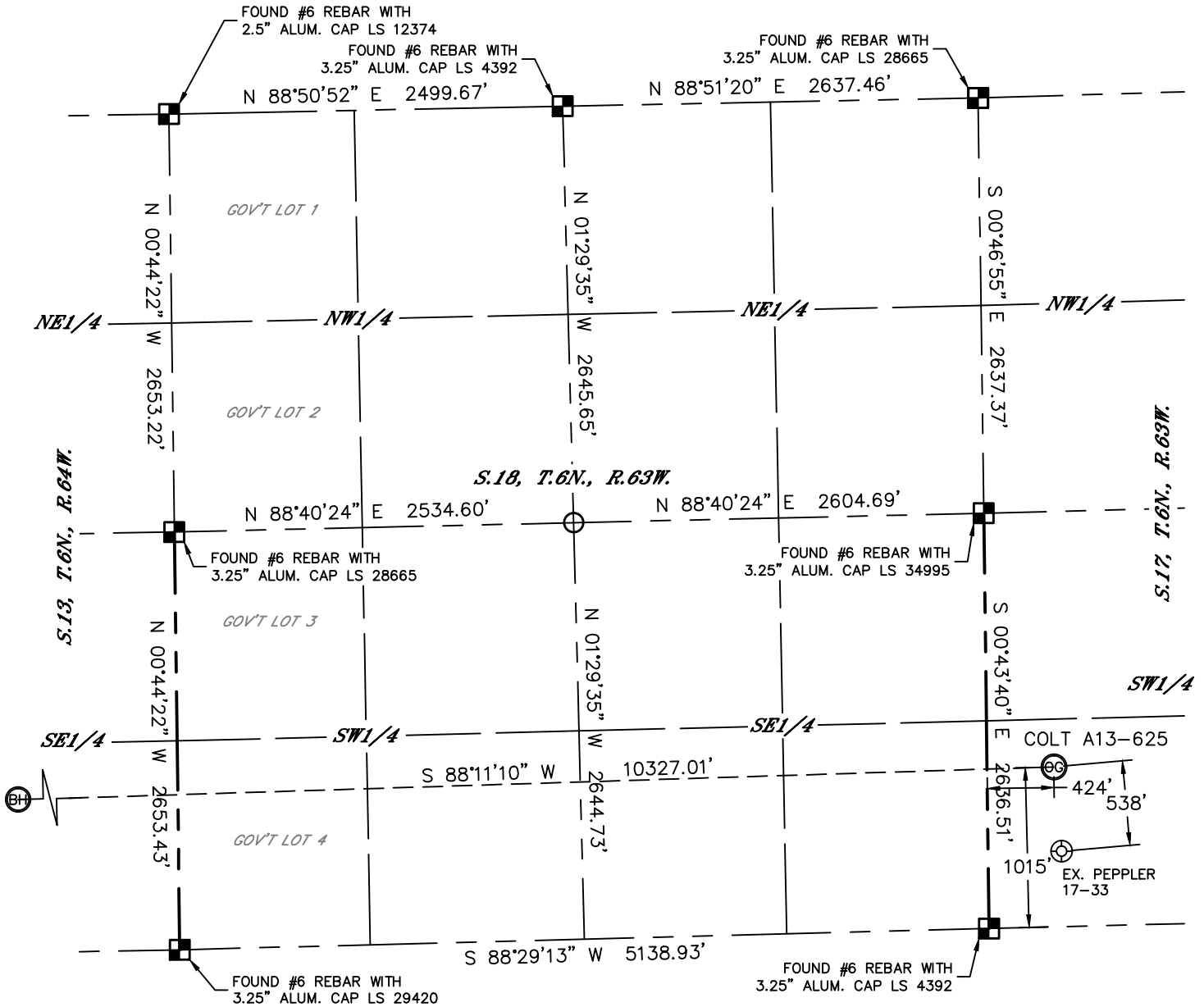


Lat40°, Inc. 6250 W. 10th Street, Unit 2, Greeley, CO 970-515-5294

# WELL LOCATION CERTIFICATE

THIS MAP DOES NOT REPRESENT A BOUNDARY SURVEY

SECTION: 17  
TOWNSHIP: 6N  
RANGE: 63W



## LEGEND

- = ALIQUOT MONUMENT AS DESCRIBED
- = CALCULATED POSITION

## SHEET 2 OF 3

Kyle E. Rutz-On behalf of Lat40°, Inc.  
Colorado Licensed Professional  
Land Surveyor No. 38307

DATE: 02/04/2015  
PROJECT#: 2013082



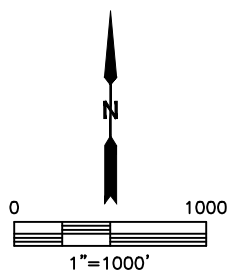
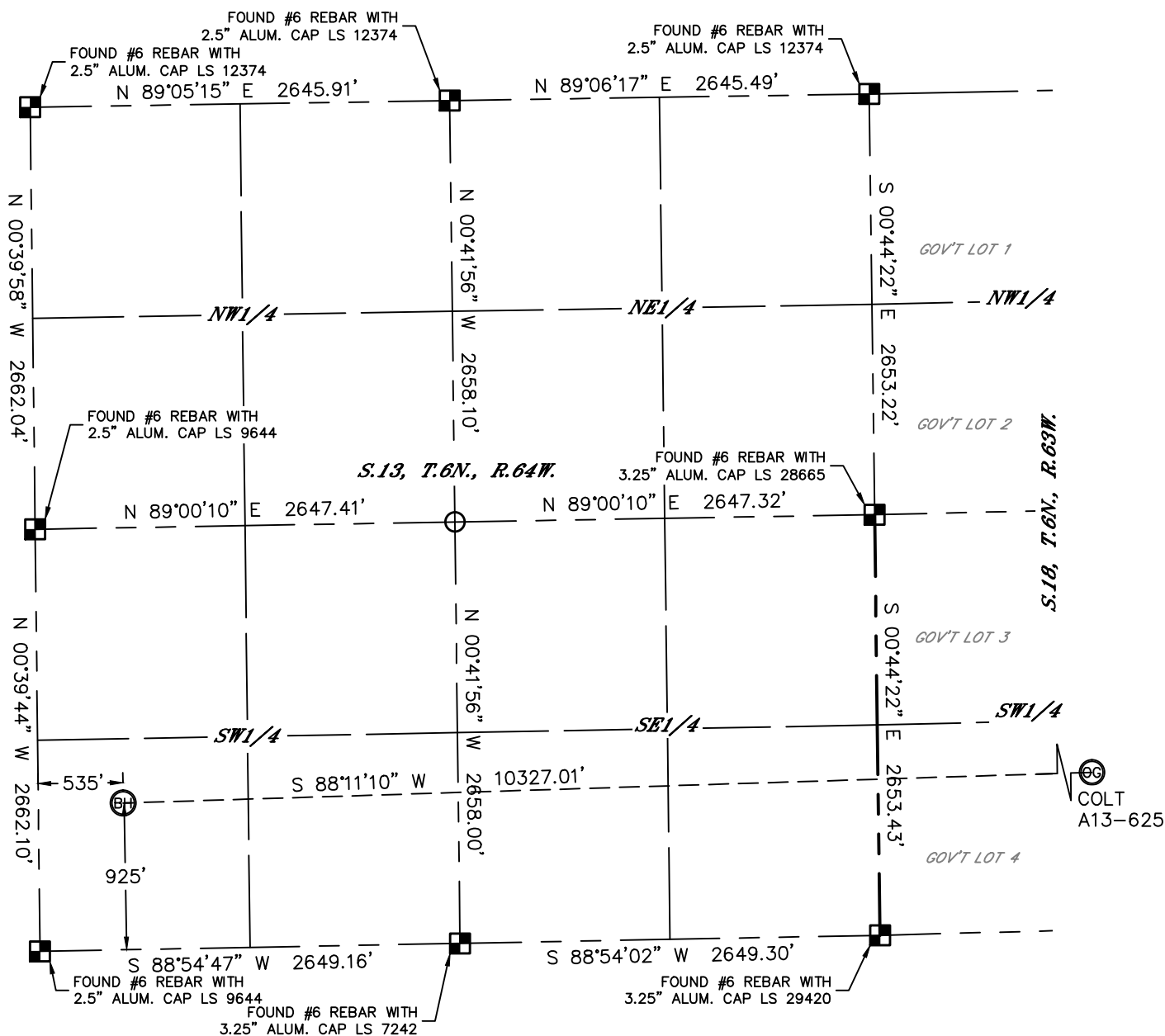


Lat40°, Inc. 6250 W. 10th Street, Unit 2, Greeley, CO 970-515-5294

# WELL LOCATION CERTIFICATE

THIS MAP DOES NOT REPRESENT A BOUNDARY SURVEY

SECTION: 17  
TOWNSHIP: 6N  
RANGE: 63W



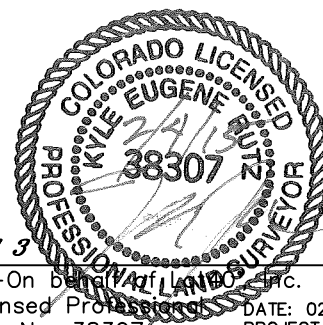
## LEGEND

- = ALIQUOT MONUMENT AS DESCRIBED
- = CALCULATED POSITION

SHEET 3 OF 3

Kyle E. Rutz-On behalf of Lat40°, Inc.  
Colorado Licensed Professional  
Land Surveyor No. 38307

DATE: 02/04/2015  
PROJECT#: 2013082



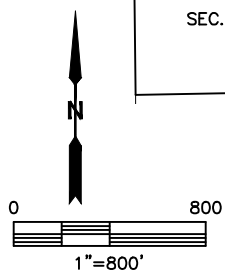
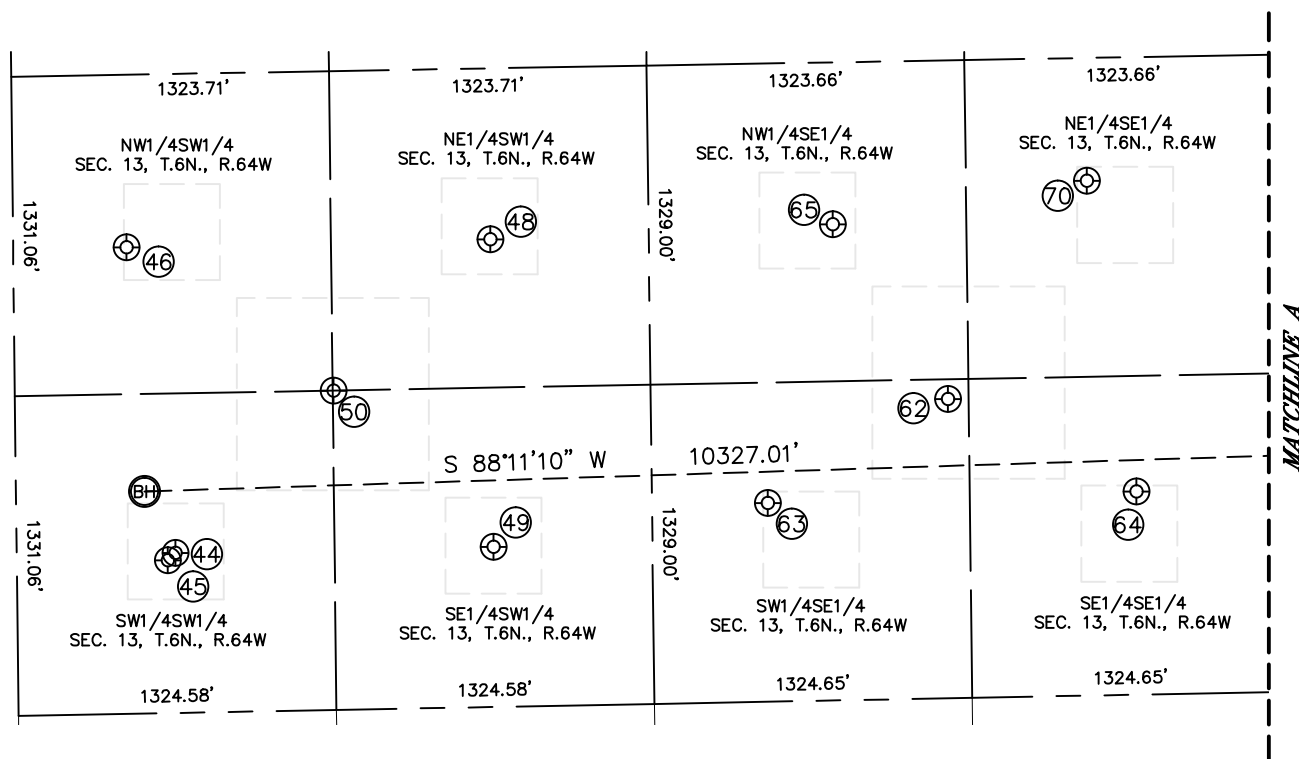
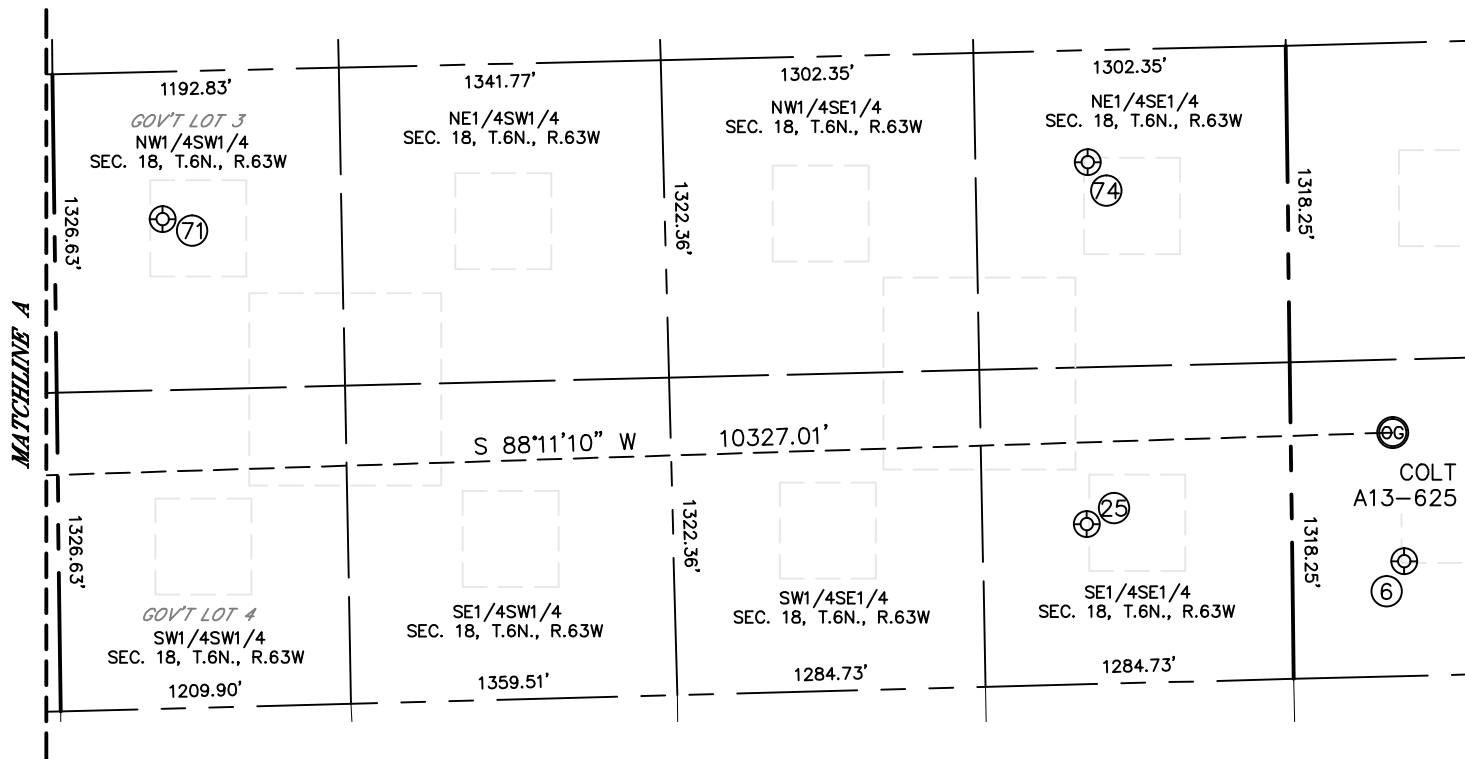


Lat40°, Inc. 6250 W. 10th Street, Unit 2, Greeley, CO 970-515-5294

# SITE SKETCH

COLT AA13-625

SECTION: 17  
TOWNSHIP: 6N  
RANGE: 63W



SHEET 1 OF 2

DATE: 02/04/2015  
PROJECT#: 2013082



Lat40°, Inc. 6250 W. 10th Street, Unit 2, Greeley, CO 970-515-5294

## SITE SKETCH

COLT AA13-625

SECTION: 17  
TOWNSHIP: 6N  
RANGE: 63W

| WELL NO. | WELL NAME       | SHL FOOTAGE |     |      |     | SHL LAT° | SHL LONG°  | PDOP | ELEV (FT.) | 1/4/1/4 |
|----------|-----------------|-------------|-----|------|-----|----------|------------|------|------------|---------|
| 6        | PEPPLER 17-33   | 478         | FSL | 465  | FWL | 40.48058 | -104.46865 | 2.8  | 4665       | SWSW    |
| 25       | PEPPLER 18-44   | 666         | FSL | 855  | FEL | 40.48104 | -104.47340 | 2.1  | 4662       | SESE    |
| 44       | LAPP 13-33      | 666         | FSL | 662  | FWL | 40.48077 | -104.50545 | 2.5  | 4665       | SWSW    |
| 45       | LAPP A24-30D    | 636         | FSL | 629  | FWL | 40.48068 | -104.50557 | 1.7  | 4664       | SWSW    |
| 46       | LAPP 13-32      | 1942        | FSL | 472  | FWL | 40.48427 | -104.50613 | 2.0  | 4667       | NWSW    |
| 48       | LAPP 13-31      | 1948        | FSL | 1988 | FWL | 40.48431 | -104.50068 | 2.0  | 4650       | NESW    |
| 49       | LAPP 13-34      | 666         | FSL | 1923 | FWL | 40.48079 | -104.50069 | 1.8  | 4648       | SESW    |
| 50       | LAPP 13-35      | 1328        | FSL | 1327 | FWL | 40.48260 | -104.50306 | 1.8  | 4654       | SESW    |
| 62       | JOHNSON A 13-23 | 1245        | FSL | 1410 | FEL | 40.48243 | -104.49386 | 2.8  | 4653       | SWSE    |
| 63       | JOHNSON A 13-15 | 827         | FSL | 2166 | FEL | 40.48126 | -104.49657 | 2.7  | 4651       | SWSE    |
| 64       | ROTH A 13-16    | 845         | FSL | 630  | FEL | 40.48135 | -104.49105 | 3.4  | 4654       | SESE    |
| 65       | TRUMP A13-10    | 1982        | FSL | 1881 | FEL | 40.48444 | -104.49556 | 3.4  | 4653       | NWSE    |
| 70       | TRUMP A 13-9    | 2143        | FSL | 820  | FEL | 40.48490 | -104.49175 | 2.1  | 4653       | NESE    |
| 71       | DONOH0 18-32    | 2037        | FSL | 450  | FWL | 40.48465 | -104.48718 | 2.3  | 4655       | NWSW    |
| 74       | PEPPLER 18-41   | 2171        | FSL | 831  | FEL | 40.48518 | -104.47331 | 1.8  | 4661       | NESE    |

***SHEET 2 OF 2***

DATE: 8/22/2014  
PROJECT#: 2013082