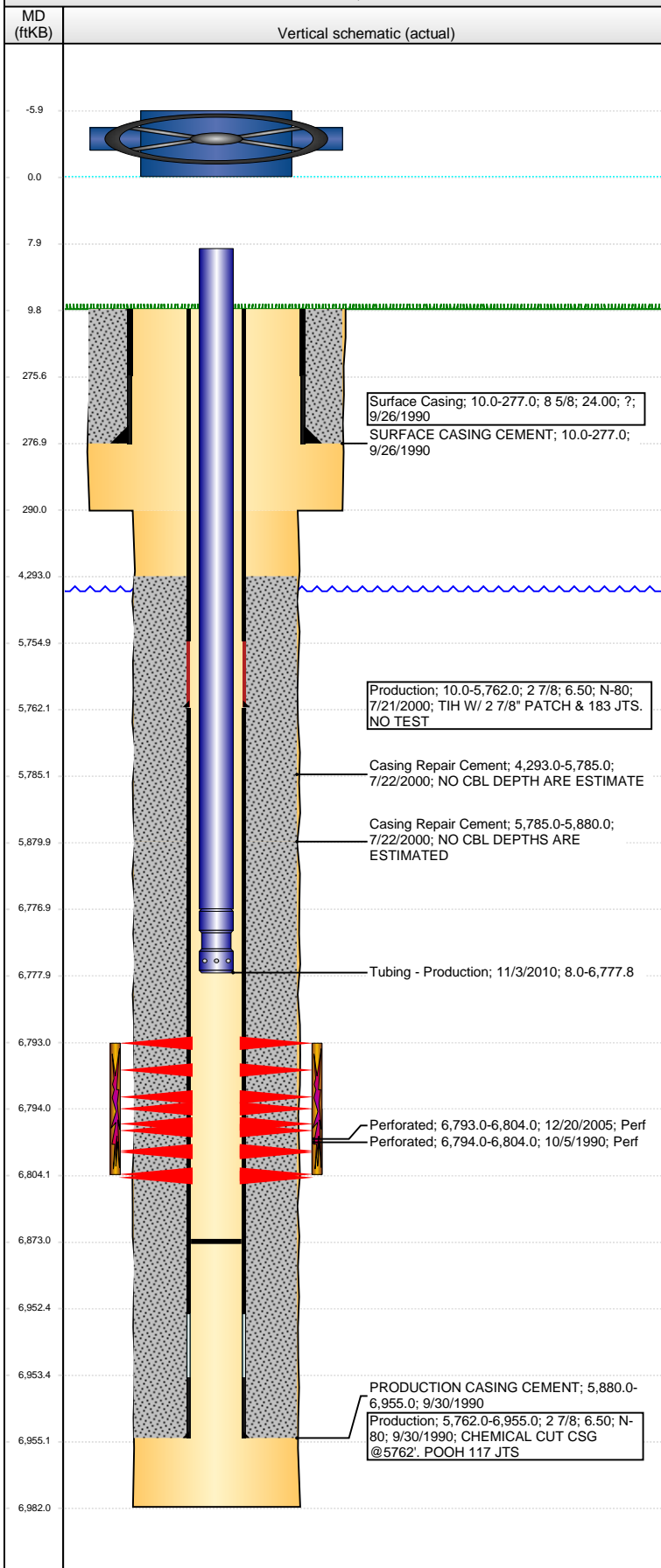


**Well Name:** STATE A36-03

VERTICAL - ORIGINAL HOLE, 2/10/2015 12:59:37 PM



## Well Header

API 05-123-14743	Business Unit DJ BASIN	District 15	Well Config VERTICAL
Original KB Elevation (ft) 4,634.00	KB - GL / MSL (ftKB) 10.00	Spud Date 9/26/1990	P & A Date

## Comment

CSG RPR '00, PATCH @ 5762'. NO TEST. NO CBL RUN FOR REPAIR CEMENT. DEPTHS ESTIMATED RUN CBL TO VERIFY

## Directions To Well

WCR 59 & WCR 64, E 0.4 MILES, S 0.2 MILES INTO LOCATION.

## Congressional Location

Quarter 1	Quarter 2	Quarter 3	Quarter 4	Section	Township	Twnshp N...	Range	Rng E/W Dir
		NE	NW	36	6	N	64	W

## Bottom Hole Location

North-South Distance (ft)	From N or S Line	East-West Distance (ft)	From E or W Line

## Plug Back Total Depths

Date	Depth (ftKB)	Method	Com
9/30/1990	6,920.0	CASING TALLY	FLOAT COLLAR
10/4/1990	6,895.0	CASED HOLE LOG	DEPTH LOGGER ON CBL
1/17/2006	6,873.0	TAG	CLEAN OUR AFTER REFRAC

## Wellbore Sections

Section Des	Size (in)	Act Top, MD (ftKB)	Act Btm, MD (ftKB)
SURFACE	12 1/4	10.0	290.0
PRODUCTION	7 7/8	290.0	6,982.0

## Zone Statuses

Zone Name	Status Date	Status	Job
CODELL	10/11/1990	PR	DRILLING/COMPLETION - ORIGINAL, 9/26/1990 00:00
CODELL	7/28/2000	PR	CASING REPAIR, 7/14/2000 00:00
CODELL	3/7/2006	PR	RE-FRAC, 12/16/2005 00:00

## Casing Strings

### Surface Casing, 277.0ftKB

Casing Description	Run Date	OD (in)	Wt/Len (l...)	Grade	Top, MD (ft...)	MD (ftKB)
Surface Casing	9/26/1990	8 5/8	24.00	?	10.0	277.0

### Production, 5,762.0ftKB

Casing Description	Run Date	OD (in)	Wt/Len (l...)	Grade	Top, MD (ft...)	MD (ftKB)
Production	7/21/2000	2 7/8	6.50	N-80	10.0	5,762.0

### Production, 6,955.0ftKB

Casing Description	Run Date	OD (in)	Wt/Len (l...)	Grade	Top, MD (ft...)	MD (ftKB)
Production	9/30/1990	2 7/8	6.50	N-80	10.0	6,955.0

## Cement

Description	Top Depth (ftKB)	Bottom Depth (ftKB)
SURFACE CASING CEMENT	10.0	277.0
PRODUCTION CASING CEMENT	5,880.0	6,955.0
Casing Repair Cement	4,293.0	5,785.0
Casing Repair Cement	5,785.0	5,880.0

## Tubing Strings

Tubing Description	Run Date	String...	ID (in)	Wt (lb/ft)	Grade	Len (ft)	Set De...
Tubing	1/17/2006						
Tubing - Production	11/3/2010	1.66	1.380	2.30	J-55	6,769.84	

## Tubing Components

Item Des	OD (in)	Wt (lb/ft)	Grade	Jts	Len (ft)	Btm (ftKB)	Btm (TVD) (ftKB)
Tubing	1.66	2.30	J-55	209	6,768.74	6,776.7	
Notched Pump Seating Nipple	1.66			1	1.10	6,777.8	

## Perforation Data

Zone	Bnch/St g	Entered Shot Total	Top (ftKB)	Btm (ftKB)	Date
CODELL, ORIGINAL HOLE		44	6,793.00	6,804.00	12/20/2005
CODELL, ORIGINAL HOLE		16	6,794.00	6,804.00	10/5/1990

**Well Name: STATE A36-03**

VERTICAL - ORIGINAL HOLE, 2/10/2015 12:59:40 PM

## Stimulations & Treatments

Date	Zone	Primary Job Type
10/6/1990	CODELL, ORIGINAL HOLE	DRILLING/COMPLETION - ORIGINAL
Technical Result	Tech Result Details	Tech Result Note
Comment		

Date	Zone	Primary Job Type
1/13/2006	CODELL, ORIGINAL HOLE	RE-FRAC
Technical Result	Tech Result Details	Tech Result Note
Comment		

## Other In Hole

Run Date	Des	OD (in)	Top (ftKB)	Btm (ftKB)

## Logs

Date	Type	Top, MD (ftKB)	Btm, MD (ftKB)
9/30/1990	COMPENSATED DENSITY	3,500.0	6,982.0
10/4/1990	CEMENT BOND	5,750.0	6,890.0
10/27/2010	GYRO	0.0	6,850.0

