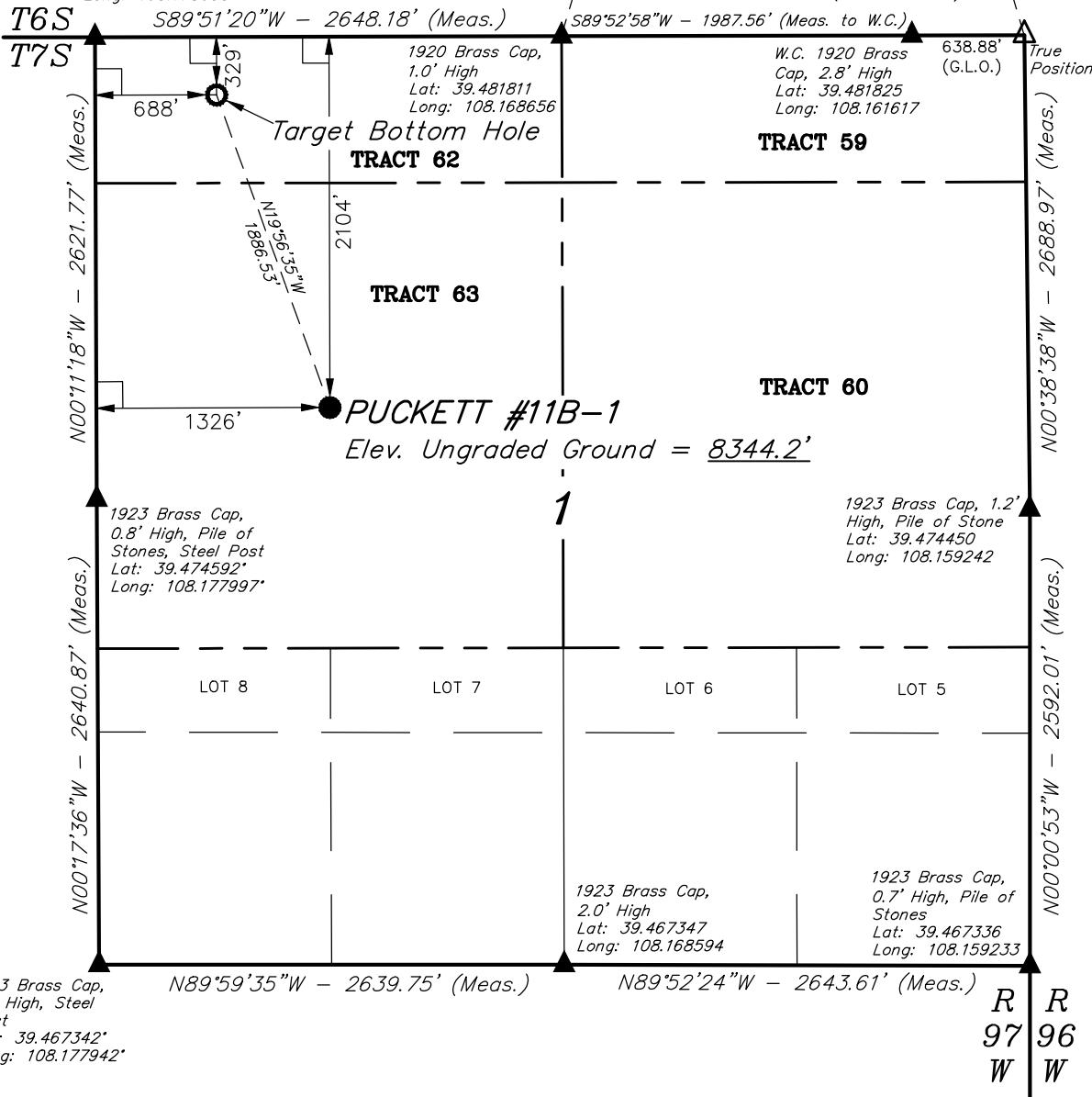


1920 Brass Cap,  
0.6' High, Steel Post  
Lat: 39.481786°  
Long: 108.178033°

**T7S, R97W, 6th P.M.**



**LEGEND:**

- = 90° SYMBOL
- = PROPOSED WELLHEAD.
- = TARGET BOTTOM HOLE.
- ▲ = SECTION CORNERS LOCATED.
- △ = SECTION CORNERS RE-ESTABLISHED.  
(Not Set on Ground.)

NAD 83 (TARGET BOTTOM HOLE)	NAD 83 (SURFACE LOCATION)
LATITUDE = 39°28'51.20" (39.480889)	LATITUDE = 39°28'33.69" (39.476025)
LONGITUDE = 108°10'32.13" (108.175592)	LONGITUDE = 108°10'23.91" (108.173308)
NAD 27 (TARGET BOTTOM HOLE)	NAD 27 (SURFACE LOCATION)
LATITUDE = 39°28'51.28" (39.480911)	LATITUDE = 39°28'33.77" (39.476047)
LONGITUDE = 108°10'29.84" (108.174956)	LONGITUDE = 108°10'21.62" (108.172672)

PDOP = 1.2

**Caerus Oil & Gas LLC**

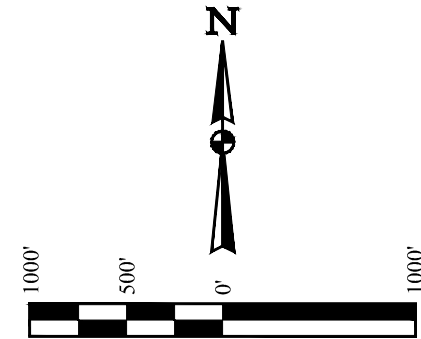
**PUCKETT #11B-1**  
**TRACT 63, SECTION 1, T7S, R97W, 6th P.M.**  
**GARFIELD COUNTY, COLORADO**

**BASIS OF BEARINGS**

BASIS OF BEARINGS IS A G.P.S. OBSERVATION

**BASIS OF ELEVATION**

SPOT ELEVATION AT THE NORTHWEST CORNER OF SECTION 30, T5S, R95W, 6th P.M. TAKEN FROM THE FORKED GULCH QUADRANGLE, COLORADO, GARFIELD COUNTY, 7.5 MINUTE SERIES (TOPOGRAPHICAL MAP) PUBLISHED BY THE UNITED STATES DEPARTMENT OF THE INTERIOR, GEOLOGICAL SURVEY. SAID ELEVATION IS MARKED AS BEING 5966 FEET.



**CERTIFICATE**

THIS IS TO CERTIFY THAT THE ABOVE PLAT WAS PREPARED FROM FIELD NOTES OF ACTUAL SURVEYS MADE BY ME OR UNDER MY SUPERVISION AND THAT THE SAME ARE TRUE AND CORRECT TO THE BEST OF MY KNOWLEDGE AND BELIEF.

*Handwritten signature: Harold Marshall*  
REGISTERED LAND SURVEYOR  
REGISTRATION NO. 38130  
STATE OF COLORADO 11-03-14



**UELS, LLC**  
Corporate Office \* 85 South 200 East  
Vernal, UT 84078 \* (435) 789-1017

SURVEYED BY: BRADEN BOX, B.B.	DATE: 10-20-14
DRAWN BY: A.R.	DATE DRAWN: 10-29-14
SCALE: 1" = 1000'	REVISED: 00-00-00

**WELL LOCATION PLAT**