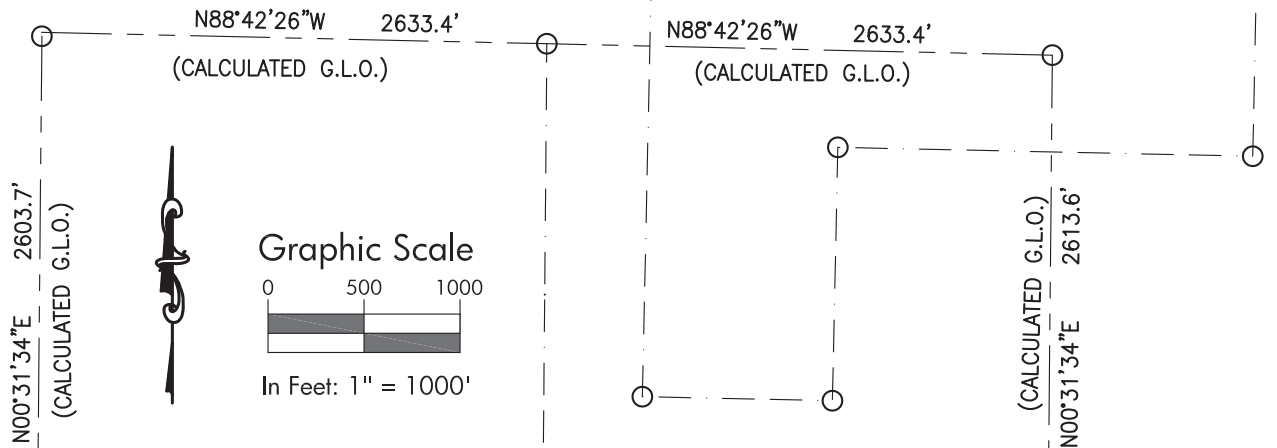


T. 11 N., R. 89 W., 6th P.M., MOFFAT COUNTY, COLORADO

TRACT 40

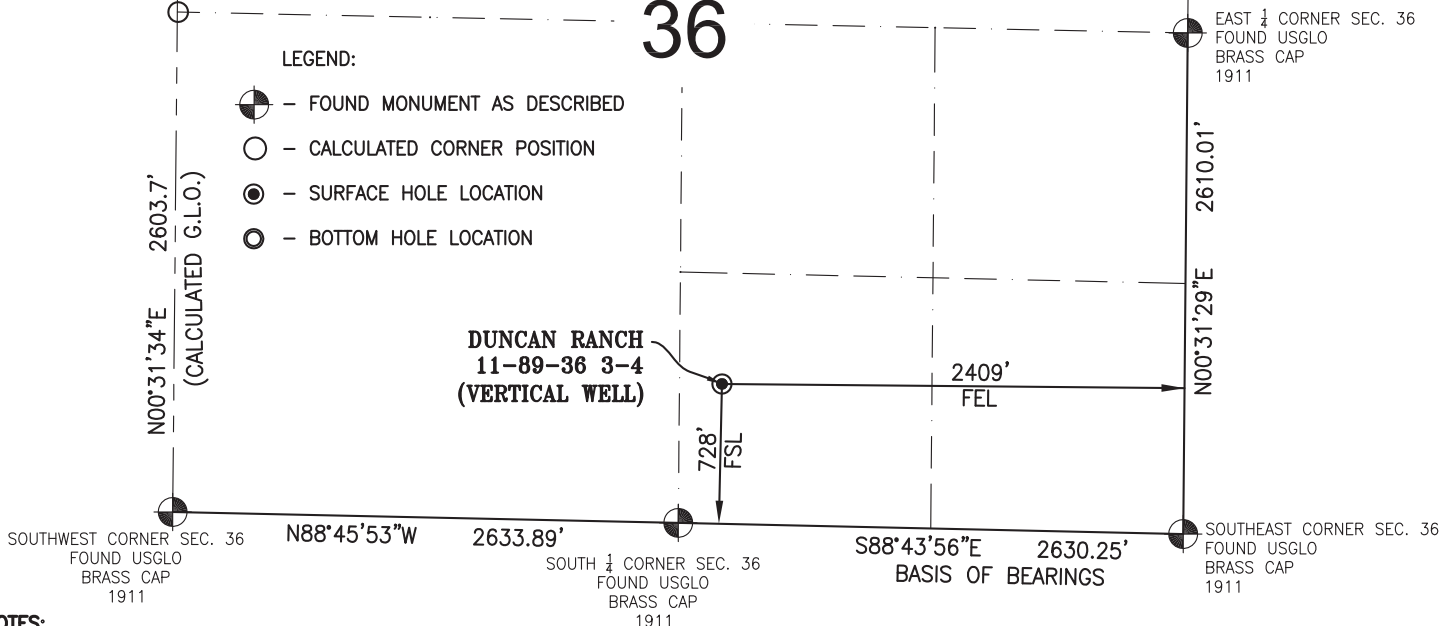


OPERATOR: PETROLEUM RESOURCE MANAGEMENT CORP.

36

LEGEND:

- - FOUND MONUMENT AS DESCRIBED
- - CALCULATED CORNER POSITION
- ⊙ - SURFACE HOLE LOCATION
- ⦿ - BOTTOM HOLE LOCATION



NOTES:

1. GEODETIC POSITIONS ARE SHOWN IN DECIMAL DEGREES, NAD83 (2011).
2. UNITS OF LINEAR MEASUREMENT: U.S. SURVEY FOOT
3. ELEVATIONS ARE BASED ON GPS OBSERVATIONS USING OPUS, GEOID 12, NAVD88.
4. ALL SURFACE (SHL) AND BOTTOM (BHL) HOLE LOCATIONS AND LANDING POINT LOCATIONS ARE MEASURED AT 90° ANGLES FROM MEASURED SECTION LINES. PROPOSED LOCATIONS HAVE BEEN PROVIDED BY THE CLIENT.
5. BASIS OF BEARINGS: N88°43'56\"/>

SURVEYORS STATEMENT:

I, ROBERT E. BRANDEBERRY, BEING A PROFESSIONAL LAND SURVEYOR LICENSED IN THE STATE OF COLORADO, DO HEREBY CERTIFY THAT THIS PLAT REPRESENTS A SURVEY PERFORMED BY ME OR UNDER MY DIRECT SUPERVISION, IN MAY AND NOVEMBER 26, 2013 AND ON SEPTEMBER 4, 2014, AND IS TRUE TO THE BEST OF MY KNOWLEDGE AND BELIEF. THE SURFACE HOLE LOCATION WAS STAKED IN THE FIELD AS SHOWN HEREON ON SEPTEMBER 4, 2014.

Robert E. Brandeberry
 1/5/15
 ROBERT E. BRANDEBERRY
 COLORADO LS 38388

WELL NAME	SECTION	LINE	TIES	NAD 83(2011) COORDINATE
DUNCAN RANCH 11-89-36 3-4	FOOTAGES	FOOTAGES		LATITUDE
SURFACE HOLE LOCATION	728' FSL	2409' FEL		LONGITUDE

Petroleum Resource Management Corp.



Scale: 1" = 1000'

Sheet 1 of 7

WLP

WELL LOCATION PLAT - DUNCAN RANCH 11-89-36 3-4
 LOCATED IN SW1/4SE1/4 SECTION 36, T.11N., R.89W., 6TH P.M.

Job# 2013-379.001 Date: 1/2/15 By: REB File: Duncan_APD