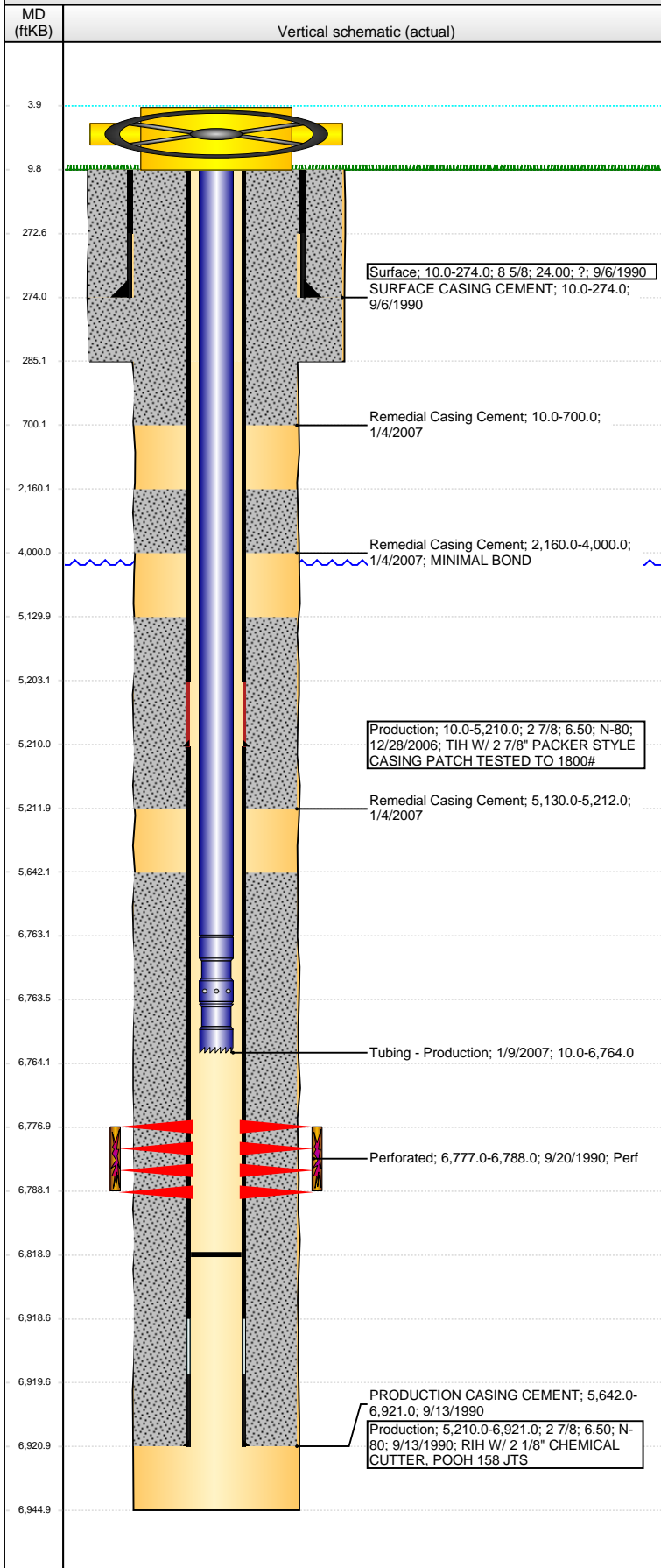


Well Name: STATE A36-08

VERTICAL - ORIGINAL HOLE, 2/5/2015 1:39:34 PM



Well Header

API 05-123-14718	Business Unit DJ BASIN	District 15	Well Config VERTICAL
Original KB Elevation (ft) 4,216.00	KB - GL / MSL (ftKB) 10.00	Spud Date 9/5/1990	P & A Date

Comment

NO OPEN HOLE LOGS IN FILE
CSG REPAIR '07, PATCH @ 5210' TESTED TO 1800#.

Directions To Well

Congressional Location

Quarter 1	Quarter 2	Quarter 3	Quarter 4	Section	Township	Twnshp N...	Range	Rng E/W Dir
		SE	NE	36	6	N	64	W

Bottom Hole Location

North-South Distance (ft)	From N or S Line	East-West Distance (ft)	From E or W Line

Plug Back Total Depths

Date	Depth (ftKB)	Method	Com
10/18/1990	6,830.0	CASED HOLE LOG	DEPTH LOGGER ON CBL
1/6/2007	6,819.0	TAG	CLEAN OUT

Wellbore Sections

Section Des	Size (in)	Act Top, MD (ftKB)	Act Btm, MD (ftKB)
SURFACE	12 1/4	10.0	285.0
PRODUCTION	7 7/8	285.0	6,945.0

Zone Statuses

Zone Name	Status Date	Status	Job
CODELL	9/30/1990	PR	DRILLING/COMPLETION - ORIGINAL, 9/5/1990 00:00
CODELL	1/12/2007	PR	CASING REPAIR, 12/15/2006 00:00

Casing Strings

Surface, 274.0ftKB

Casing Description	Run Date	OD (in)	Wt/Len (l...)	Grade	Top, MD (ft...)	MD (ftKB)
Surface	9/6/1990	8 5/8	24.00	?	10.0	274.0

Production, 5,210.0ftKB

Casing Description	Run Date	OD (in)	Wt/Len (l...)	Grade	Top, MD (ft...)	MD (ftKB)
Production	12/28/2006	2 7/8	6.50	N-80	10.0	5,210.0

Production, 6,921.0ftKB

Casing Description	Run Date	OD (in)	Wt/Len (l...)	Grade	Top, MD (ft...)	MD (ftKB)
Production	9/13/1990	2 7/8	6.50	N-80	10.0	6,921.0

Cement

Description	Top Depth (ftKB)	Bottom Depth (ftKB)
SURFACE CASING CEMENT	10.0	274.0
PRODUCTION CASING CEMENT	5,642.0	6,921.0
Remedial Casing Cement	10.0	700.0
Remedial Casing Cement	2,160.0	4,000.0
Remedial Casing Cement	5,130.0	5,212.0

Tubing Strings

Tubing Description	Run Date	String...	ID (in)	Wt (lb/ft)	Grade	Len (ft)	Set De...
Tubing - Production	1/9/2007	1.66	1.380	2.33	J-55	6,754.00	

Tubing Components

Item Des	OD (in)	Wt (lb/ft)	Grade	Jts	Len (ft)	Btm (ftKB)	Btm (TVD) (ftKB)
Tubing	1.66	2.33	J-55	205	6,753.00	6,763.0	
Seal Nipple	1.66				0.50	6,763.5	
Notched collar	1.66				0.50	6,764.0	

Perforation Data

Zone	Bnch/St g	Entered Shot Total	Top (ftKB)	Btm (ftKB)	Date
CODELL, ORIGINAL HOLE		26	6,777.00	6,788.00	9/20/1990

Stimulations & Treatments

Date	Zone	Primary Job Type
9/25/1990	CODELL, ORIGINAL HOLE	DRILLING/COMPLETION - ORIGINAL
Technical Result	Tech Result Details	Tech Result Note

Comment

Well Name: STATE A36-08

VERTICAL - ORIGINAL HOLE, 2/5/2015 1:39:37 PM

Other In Hole

Run Date	Des	OD (in)	Top (ftKB)	Btm (ftKB)

Logs

Date	Type	Top, MD (ftKB)	Btm, MD (ftKB)
10/18/1990	CEMENT BOND	5,550.0	6,825.0
1/5/2007	CEMENT BOND	10.0	5,377.0
4/14/2014	GYRO	10.0	6,675.0

