



RADIAL CEMENT BOND LOG
GAMMA RAY
CCL

Company		Kerr McGee Oil & Gas	
Well		Cannon Land 16-3A	
Field		Wattenberg	
County		Weld	
State		CO	
Location:		AP1 # : 05-123-21892	
SE SE		Other Services	
LAT: 40.16170 LONG: -104.64210			
SEC 3 TWP 2N RGE 65W			
Permanent Datum		GL	Elevation 4847
Log Measured From		KB 10	KB. 4857
Drilling Measured From		KB	D.F. 4856
			G.L. 4847
Date	1-29-2015		
Run Number	ONE		
Depth Driller	7719		
Depth Logger	3600		
Bottom Logged Interval	3600		
Top Log Interval	Surface		
Open Hole Size	7 7/8		
Type Fluid	WATER		
Density / Viscosity	1.0		
Max. Recorded Temp.	120		
Estimated Cement Top	76		
Time Well Ready	NA		
Time Logger on Bottom	NA		
Equipment Number	7770		
Location	GREELEY		
Recorded By	JBULLARD		
Witnessed By	B.SMITH		
Borehole Record		Tubing Record	
Run Number	Bit	From	To
ONE	12.25	0	761
TWO	8.875	761	7719
Casing Record	Size	Wgt/Ft	Top
Surface String	8 5/8	24#	0
Prot. String			
Production String	4 1/2	11.6#	0
Liner			

<<< Fold Here >>>

All interpretations are opinions based on inferences from electrical or other measurements and we cannot and do not guarantee the accuracy or correctness of any interpretation, and we shall not, except in the case of gross or willful negligence on our part, be liable or responsible for any loss, costs, damages, or expenses incurred or sustained by anyone resulting from any interpretation made by any of our officers, agents or employees. These interpretations are also subject to our general terms and conditions set out in our current Price Schedule.

Comments

NOT CORROLATED
WELL LOADED AND READY UPON ARRIVAL
RAN CBL TO VERIFY CEMENT.

THANK YOU FOR USING WARRIOR ENERGY!

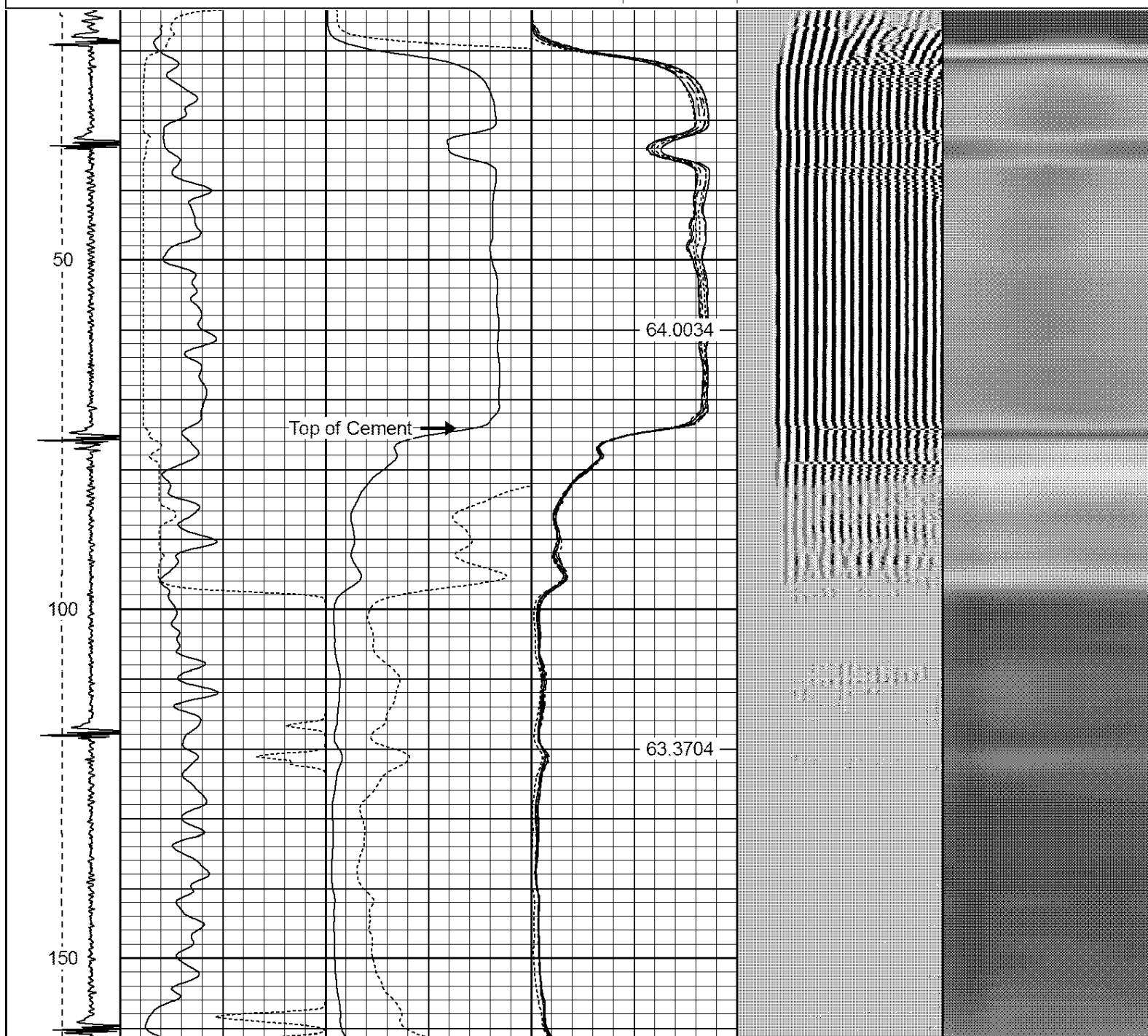
Sensor	Offset (ft)	Schematic	Description	Len (ft)	OD (in)	Wt (lb)

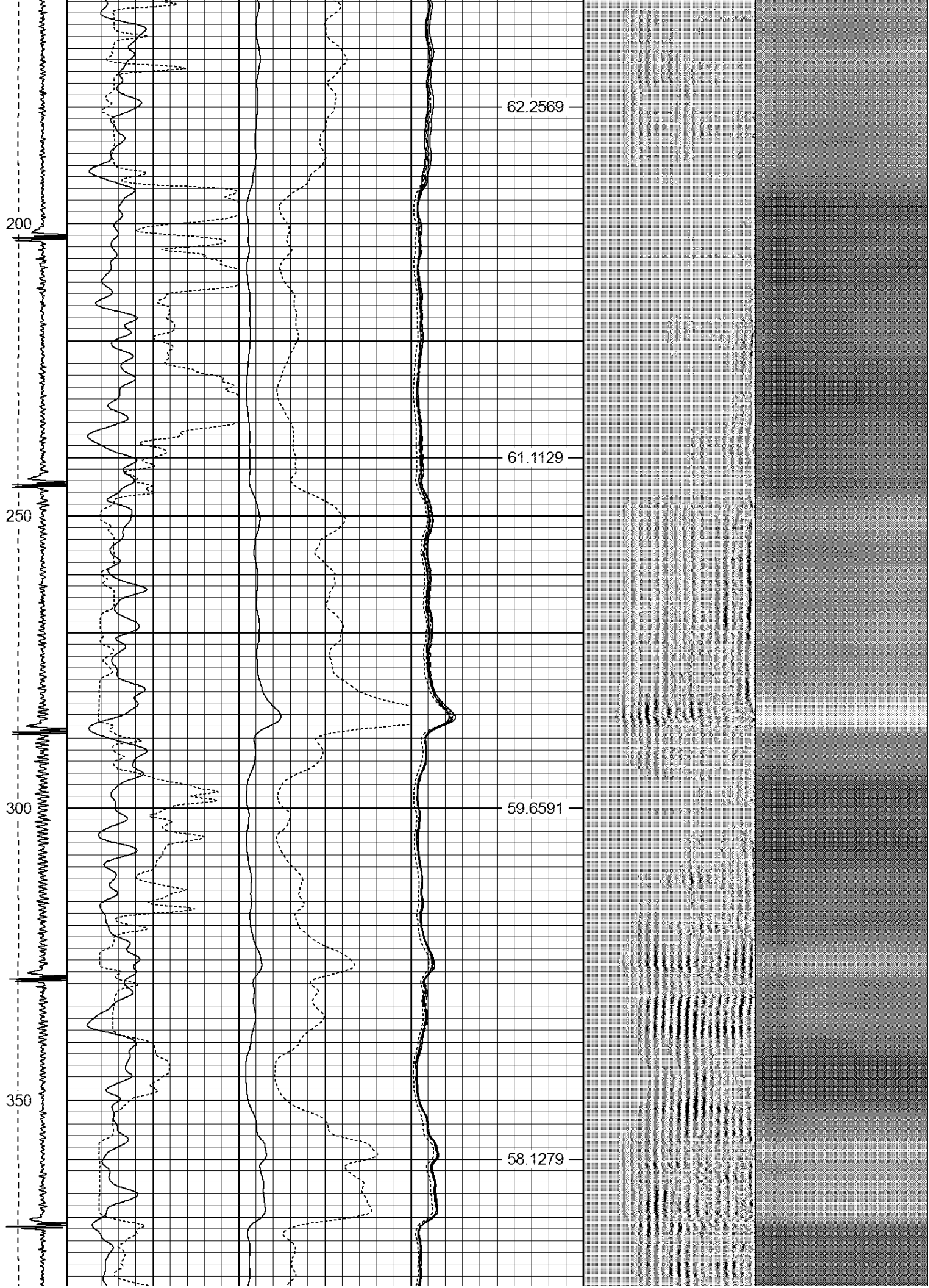
[illegible]

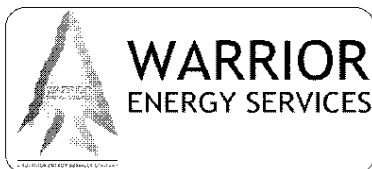
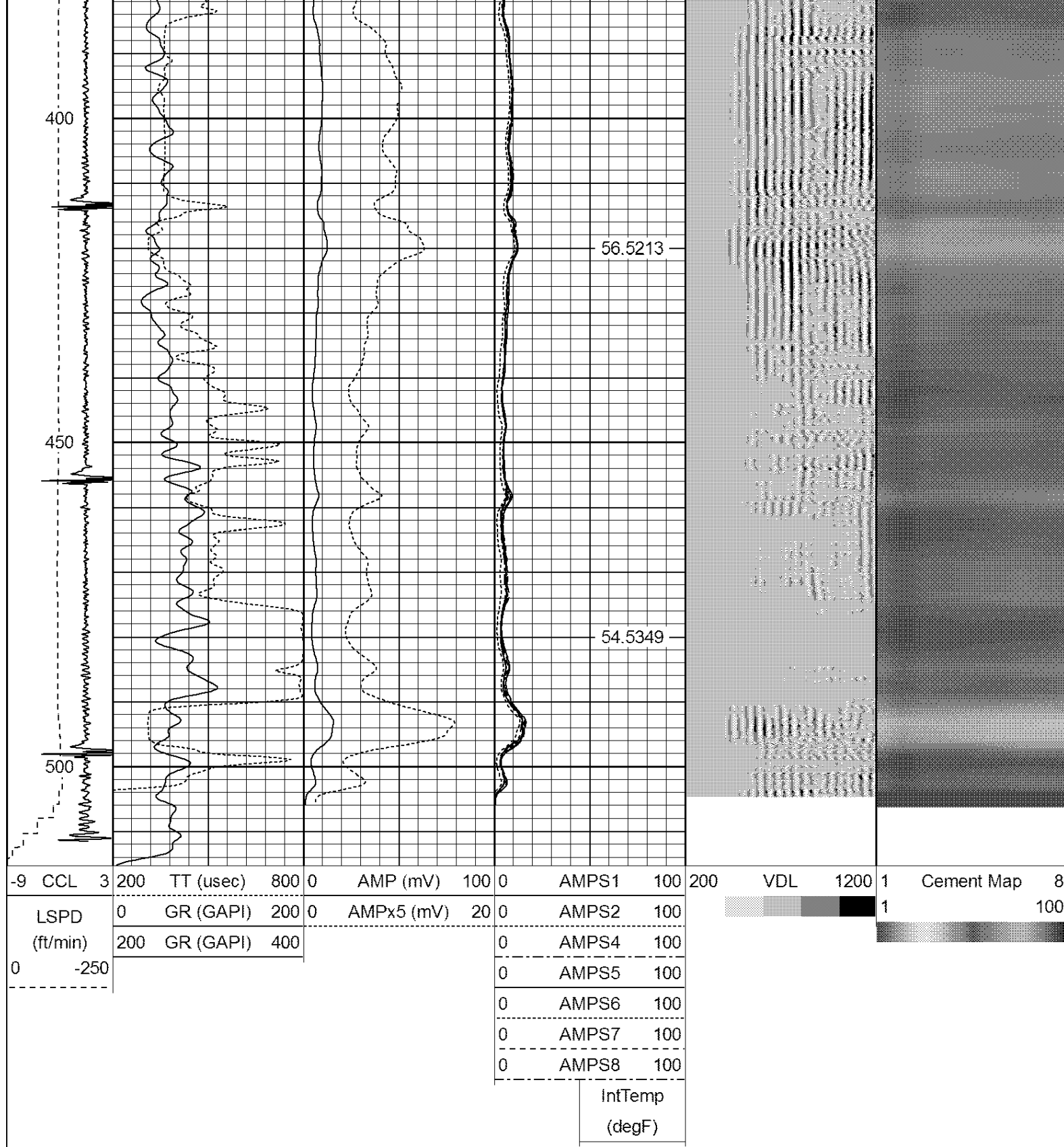
RI IN #1 SURFACE PASS

Database File: cannon land 16-3a.db
 Dataset Pathname: pass1
 Presentation Format: ips_rbt
 Dataset Creation: Thu Jan 29 07:01:45 2015 by Log Std Casedhole 09061
 Charted by: Depth in Feet scaled 1:240

-9	CCL	3	200	TT (usec)	800	0	AMP (mV)	100	0	AMPS1	100	200	VDL	1200	1	Cement Map	8
LSPD			0	GR (GAPI)	200	0	AMPx5 (mV)	20	0	AMPS2	100				1		100
(ft/min)			200	GR (GAPI)	400				0	AMPS4	100						
0	-250								0	AMPS5	100						
									0	AMPS6	100						
									0	AMPS7	100						
									0	AMPS8	100						
										IntTemp							
										(degF)							



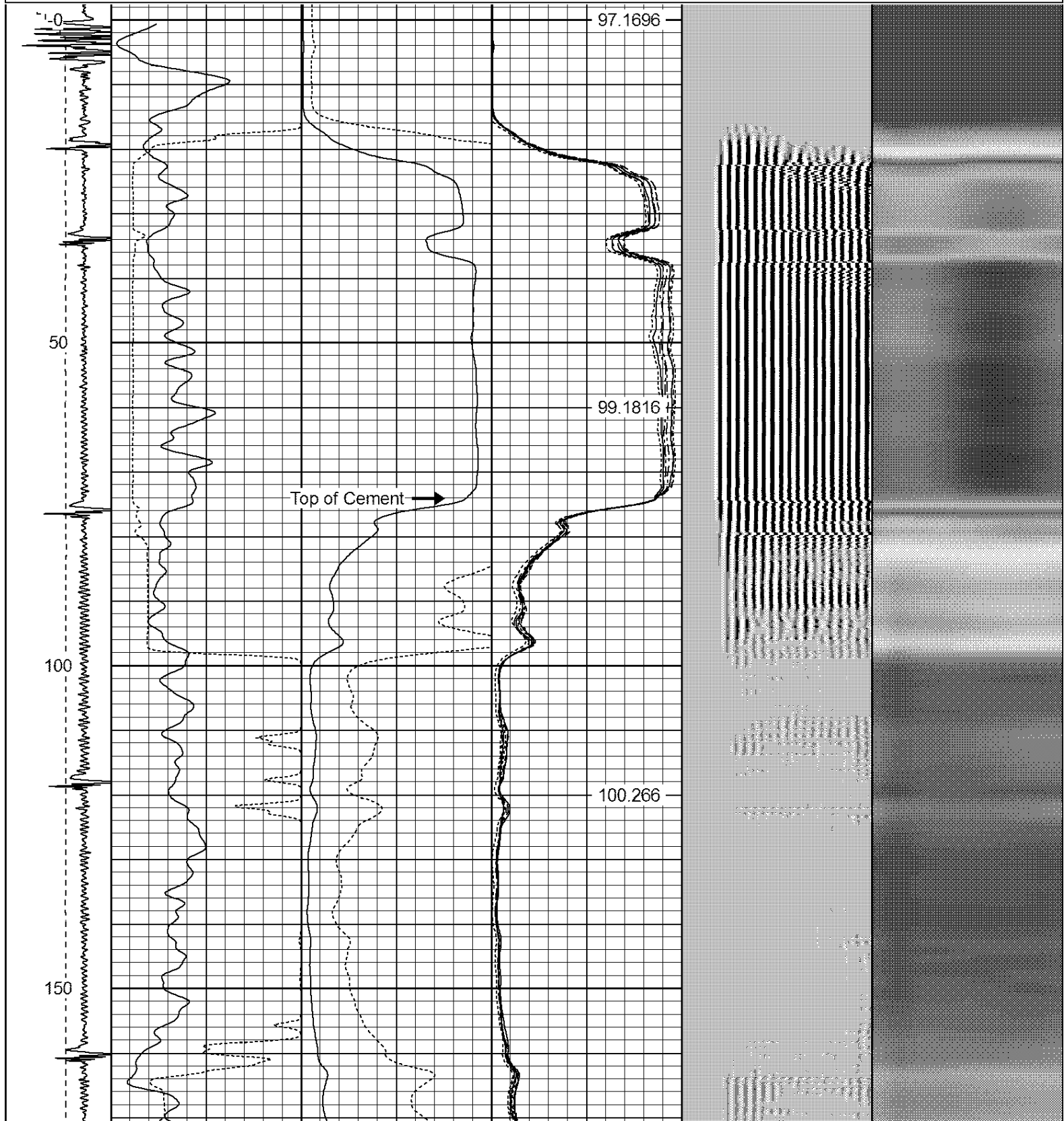


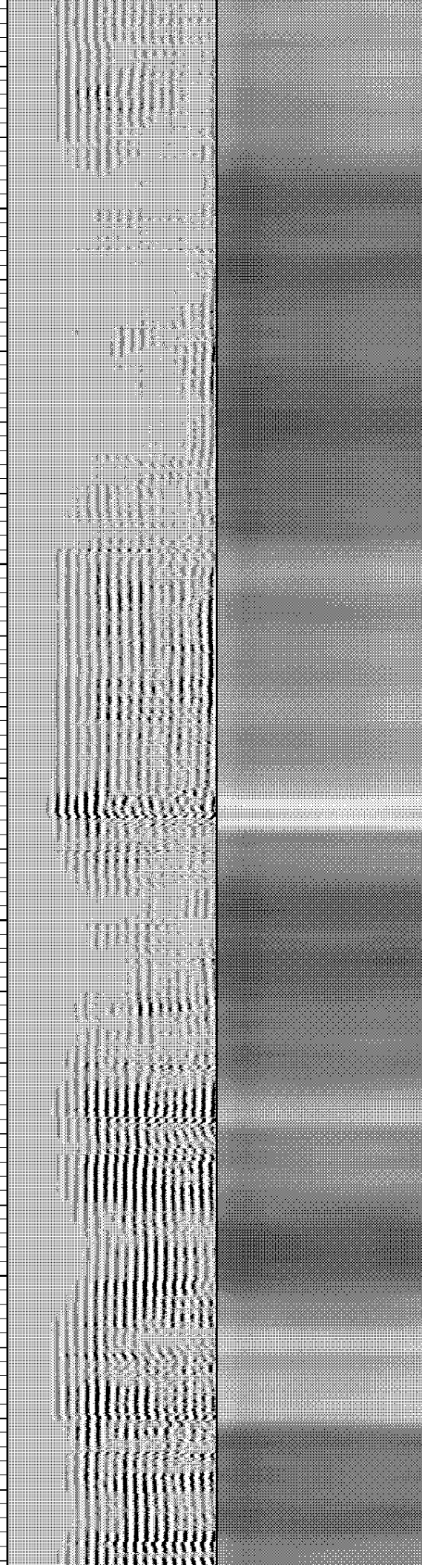
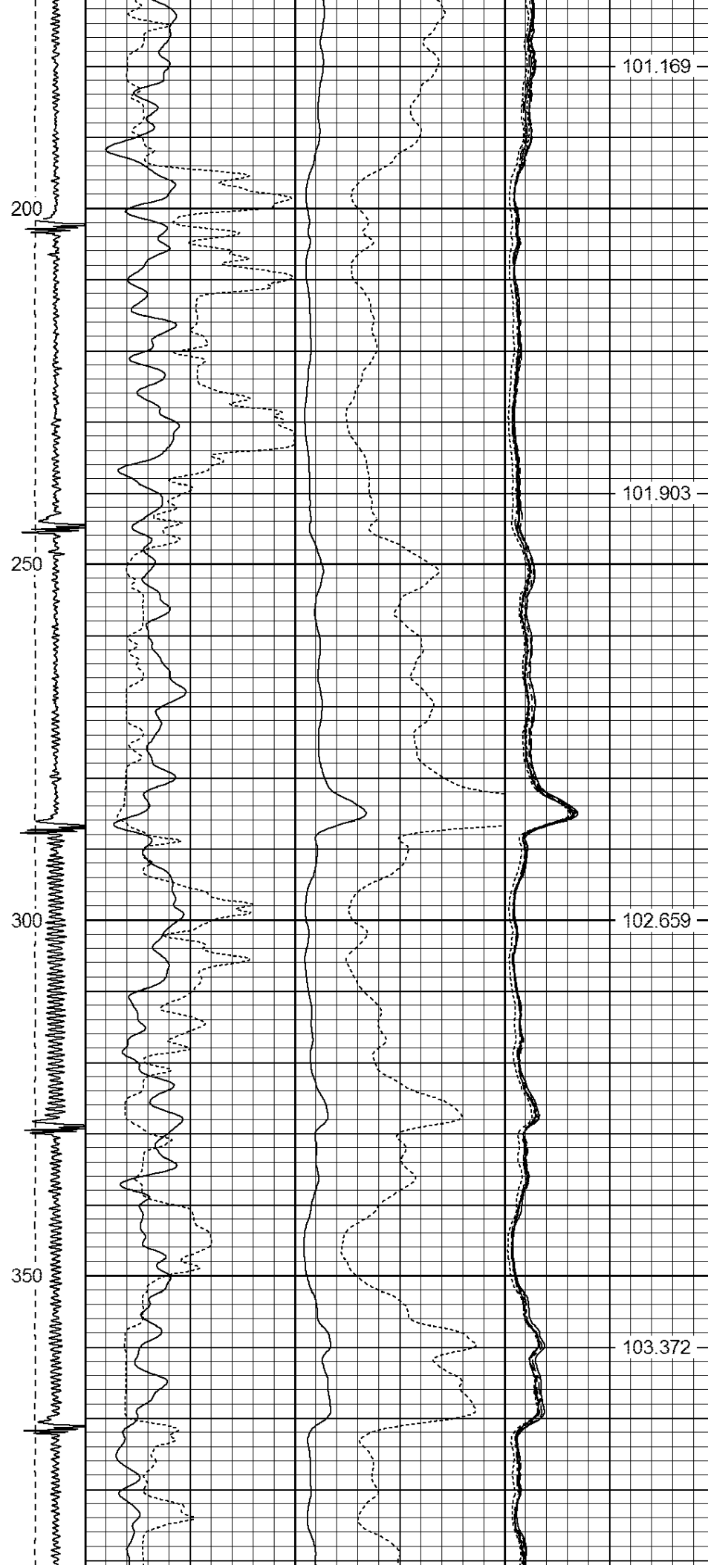


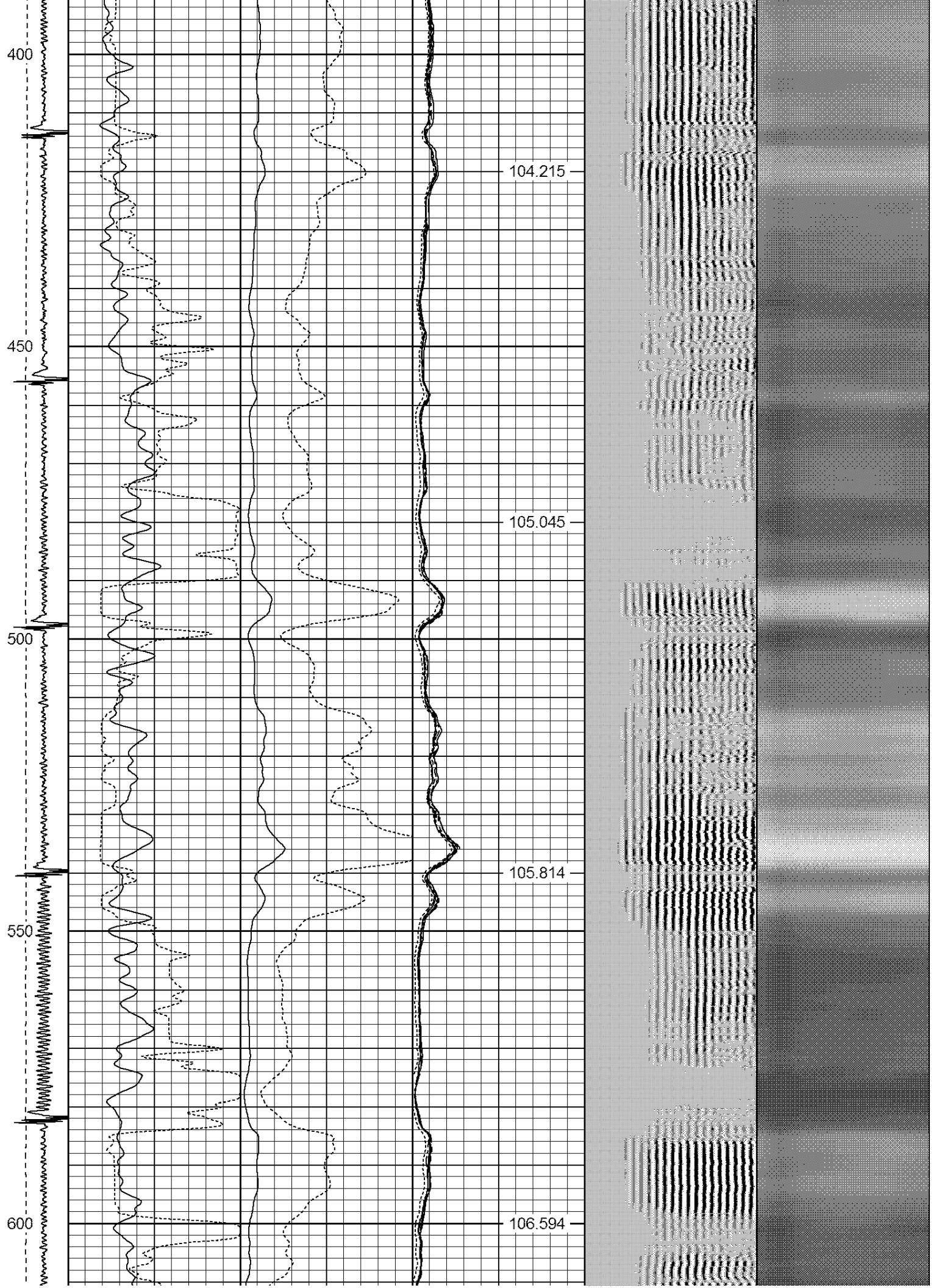
MAIN PASS

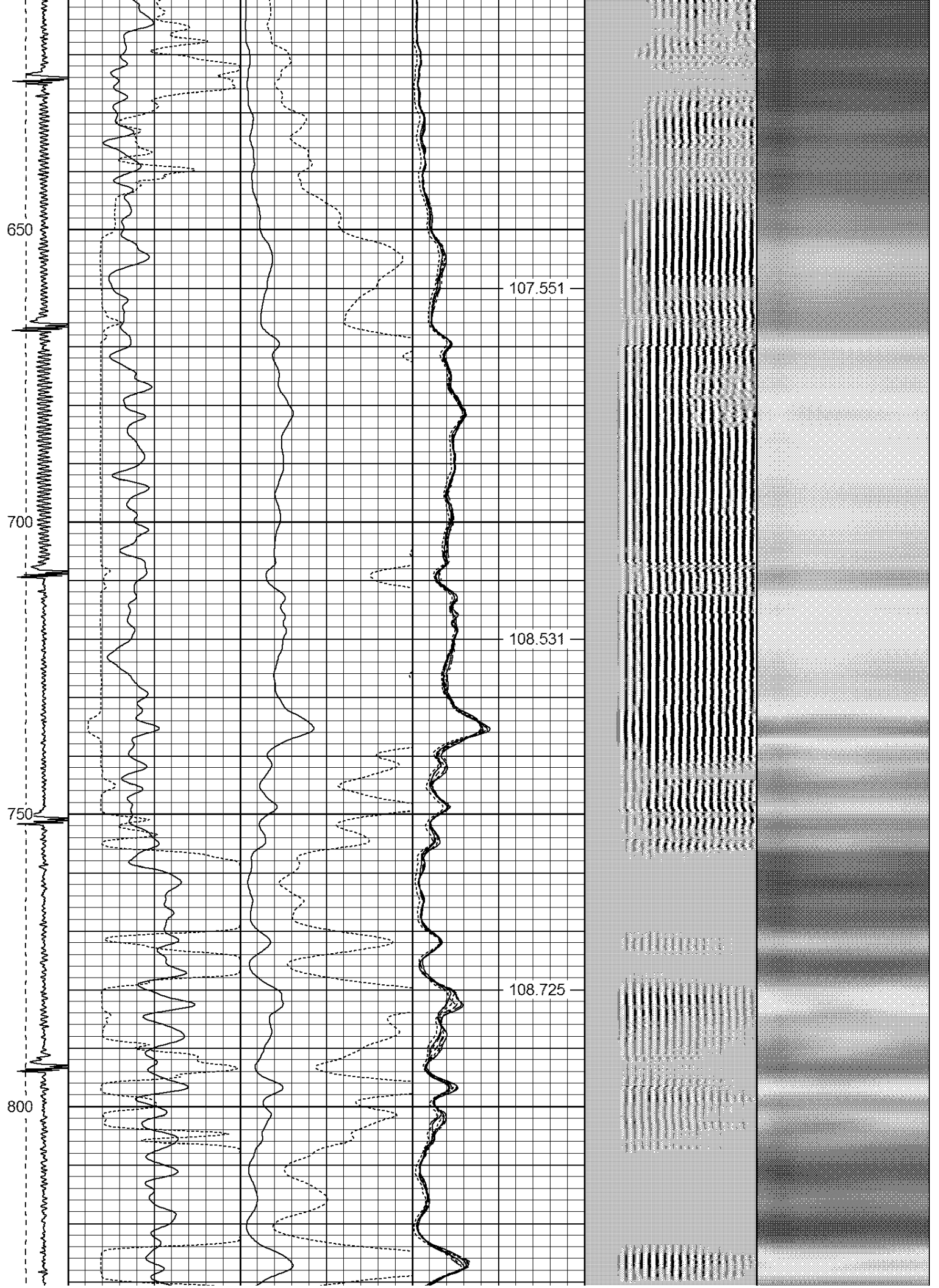
Database File: cannon land 16-3a.db
 Dataset Pathname: pass3
 Presentation Format: ips_rbt
 Dataset Creation: Thu Jan 29 07:11:10 2015 by Log Std Casedhole 09061
 Charted by: Depth in Feet scaled 1:240

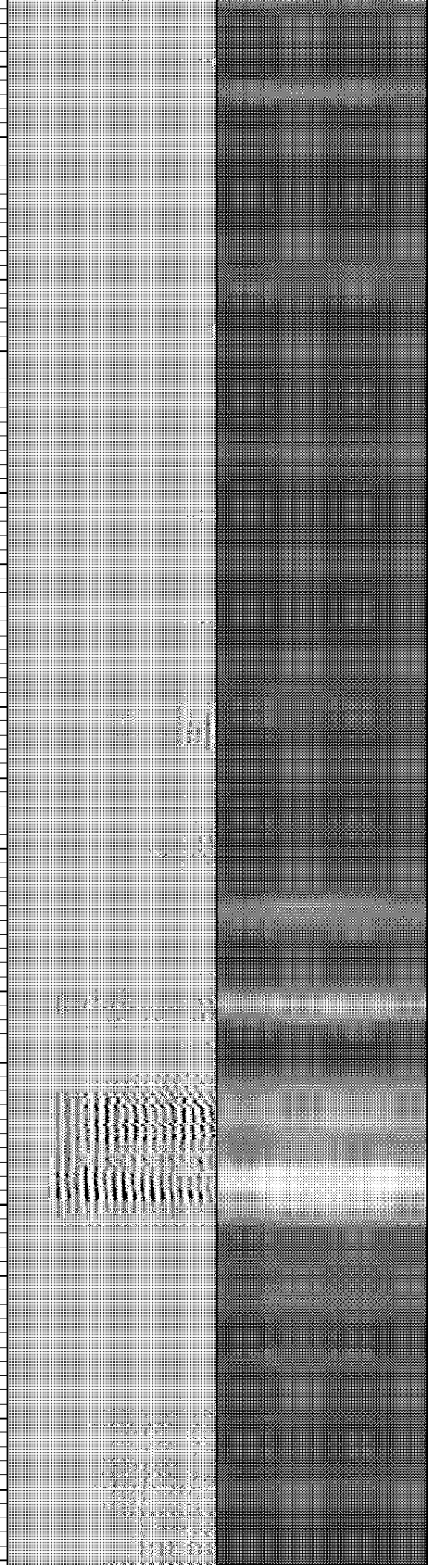
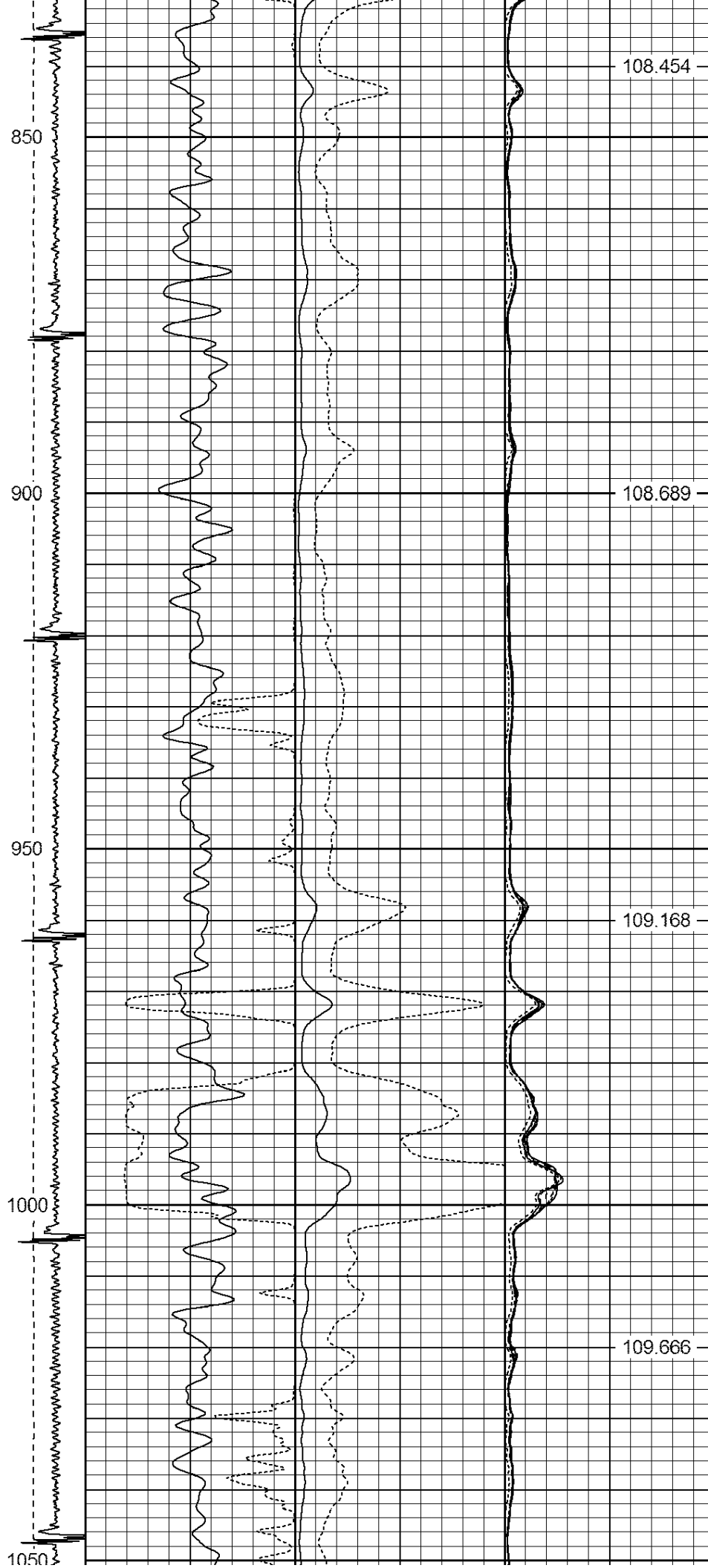
-9	CCL	3	200	TT (usec)	800	0	AMP (mV)	100	0	AMPS1	100	200	VDL	1200	1	Cement Map	8
LSPD			0	GR (GAPI)	200	0	AMPx5 (mV)	20	0	AMPS2	100				1		100
(ft/min)			200	GR (GAPI)	400				0	AMPS4	100						
0	-250								0	AMPS5	100						
									0	AMPS6	100						
									0	AMPS7	100						
									0	AMPS8	100						
										IntTemp							
										(degF)							

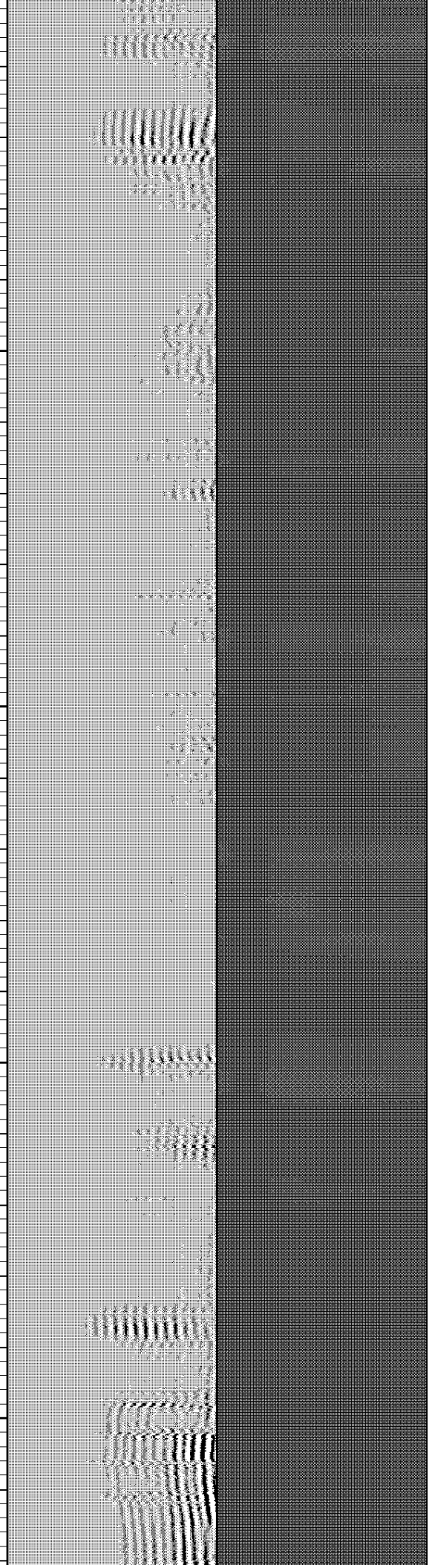
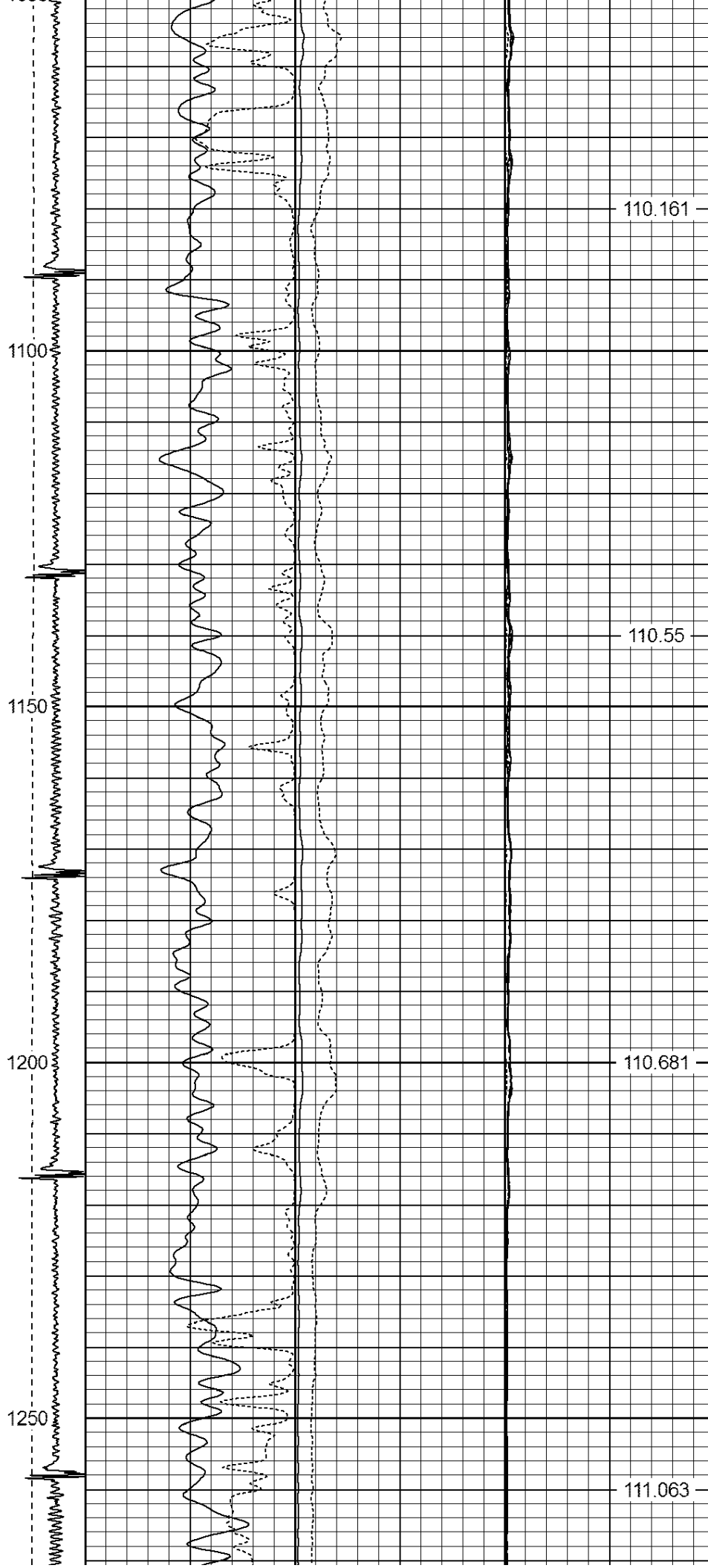












1300

1350

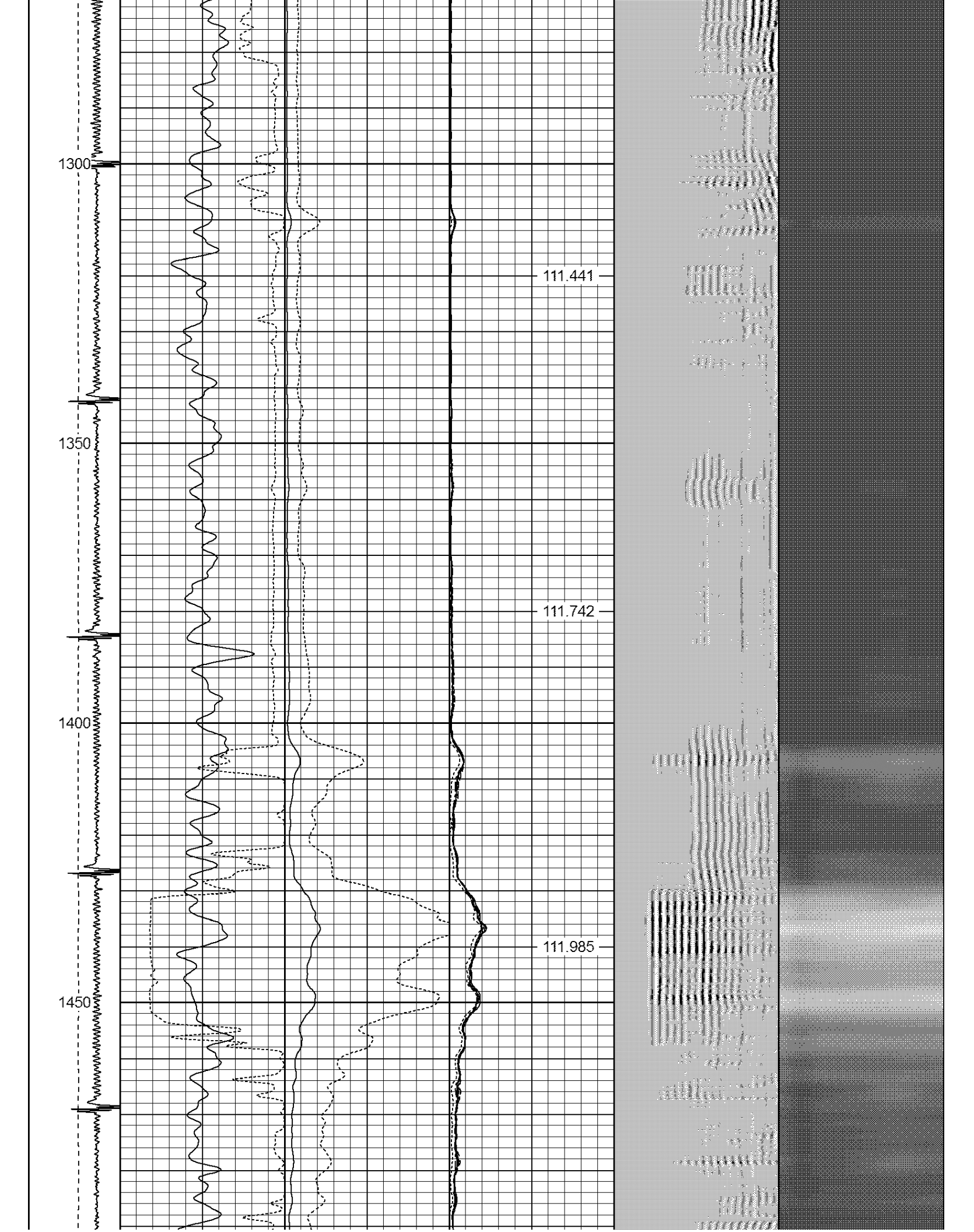
1400

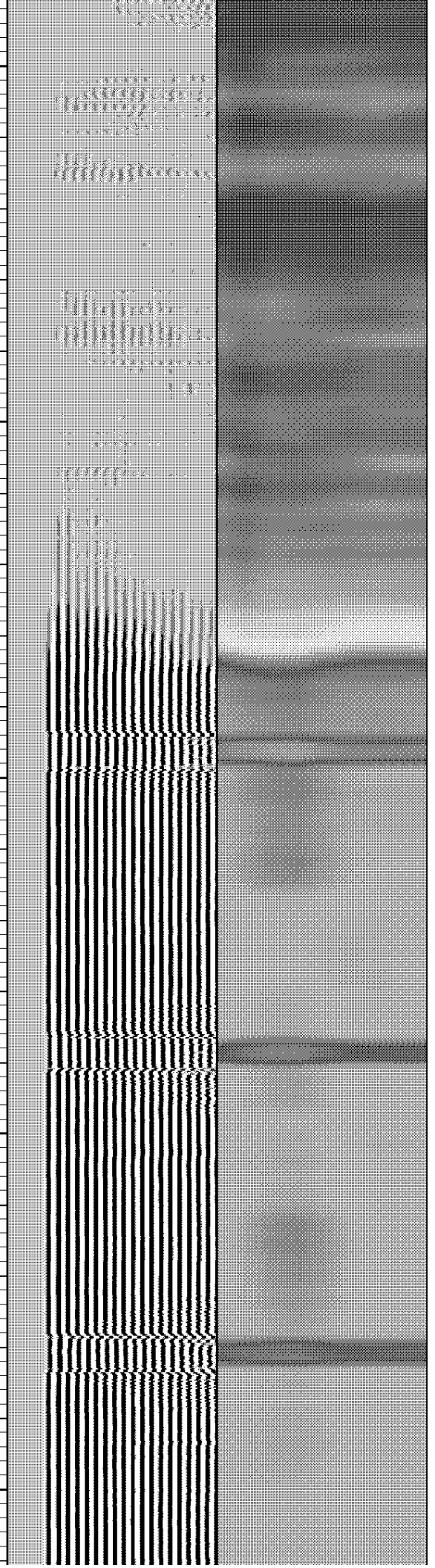
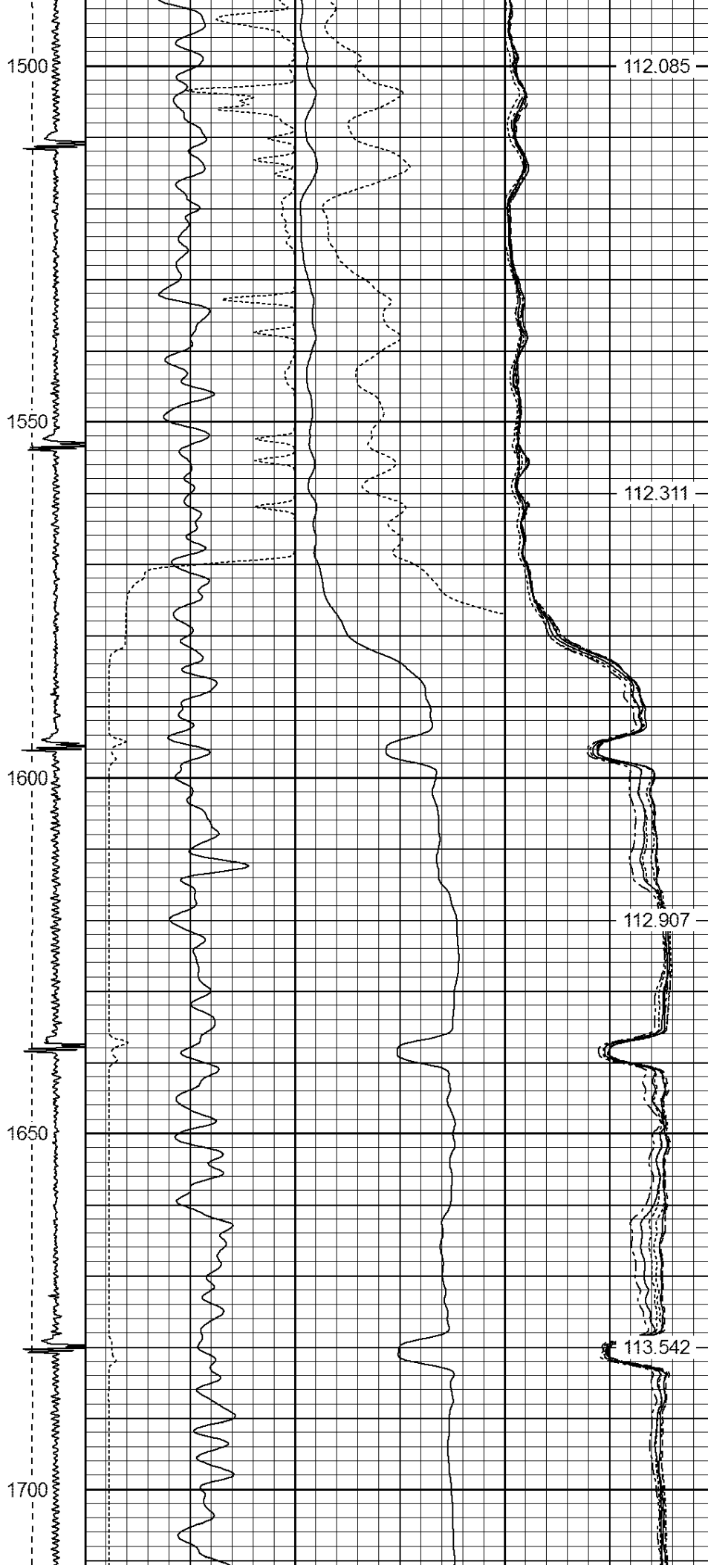
1450

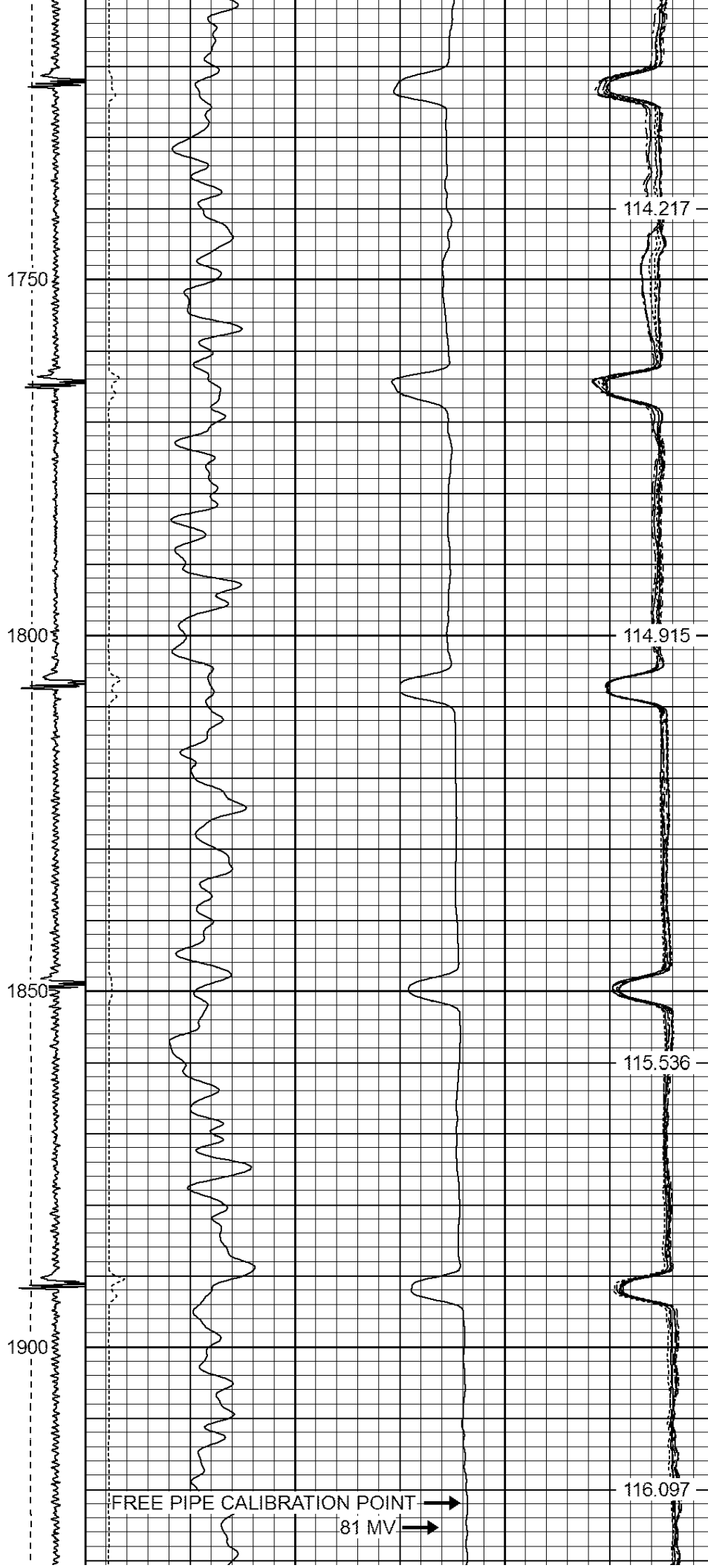
111.441

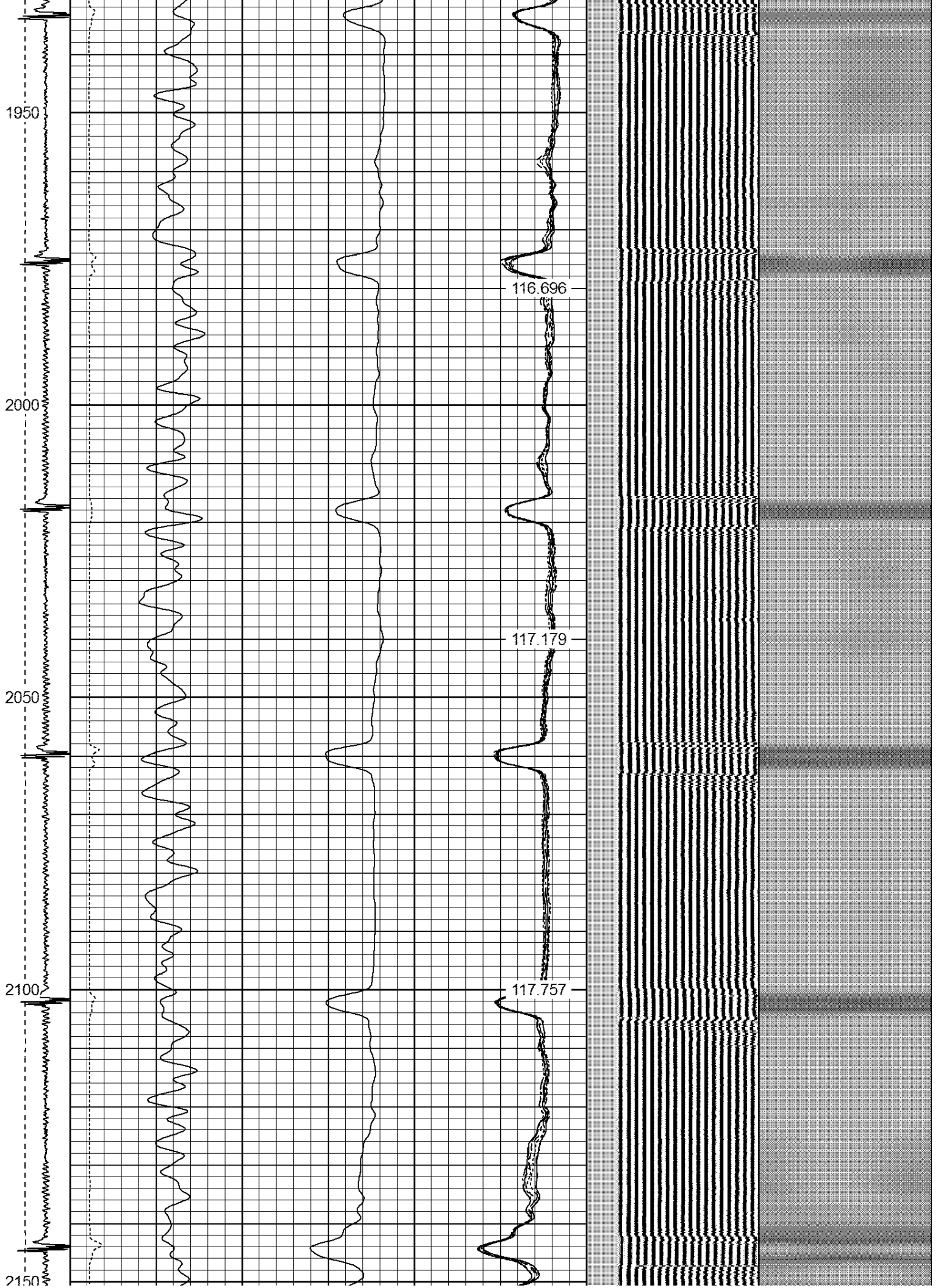
111.742

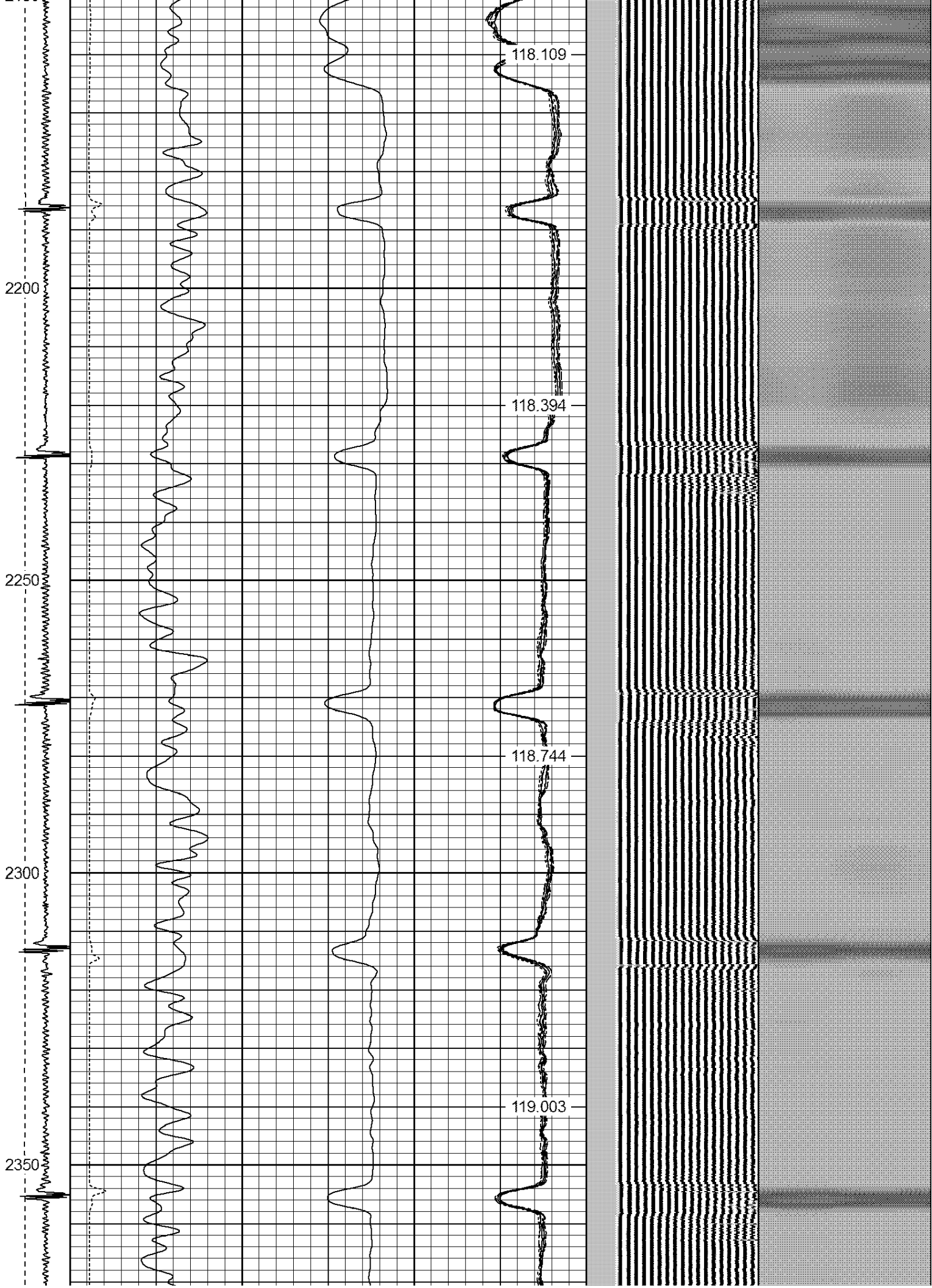
111.985

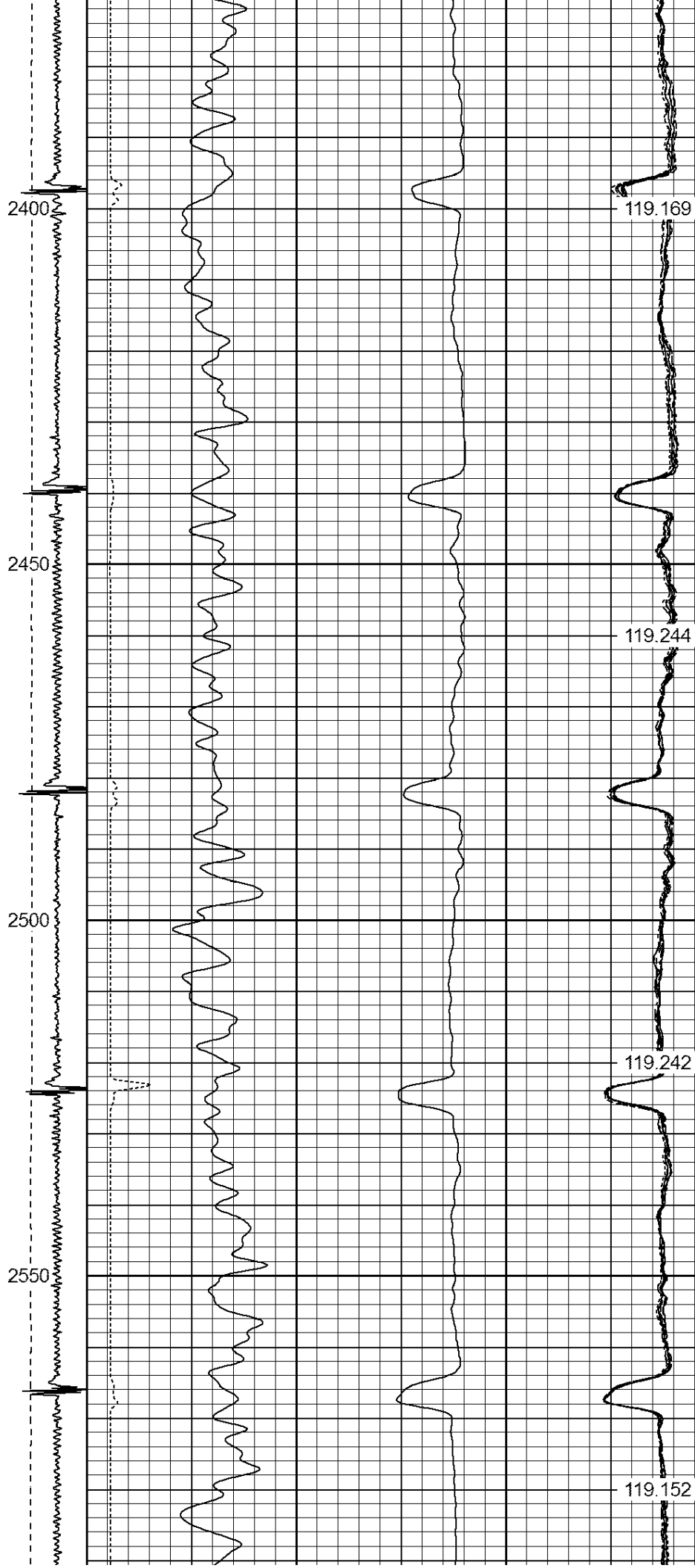


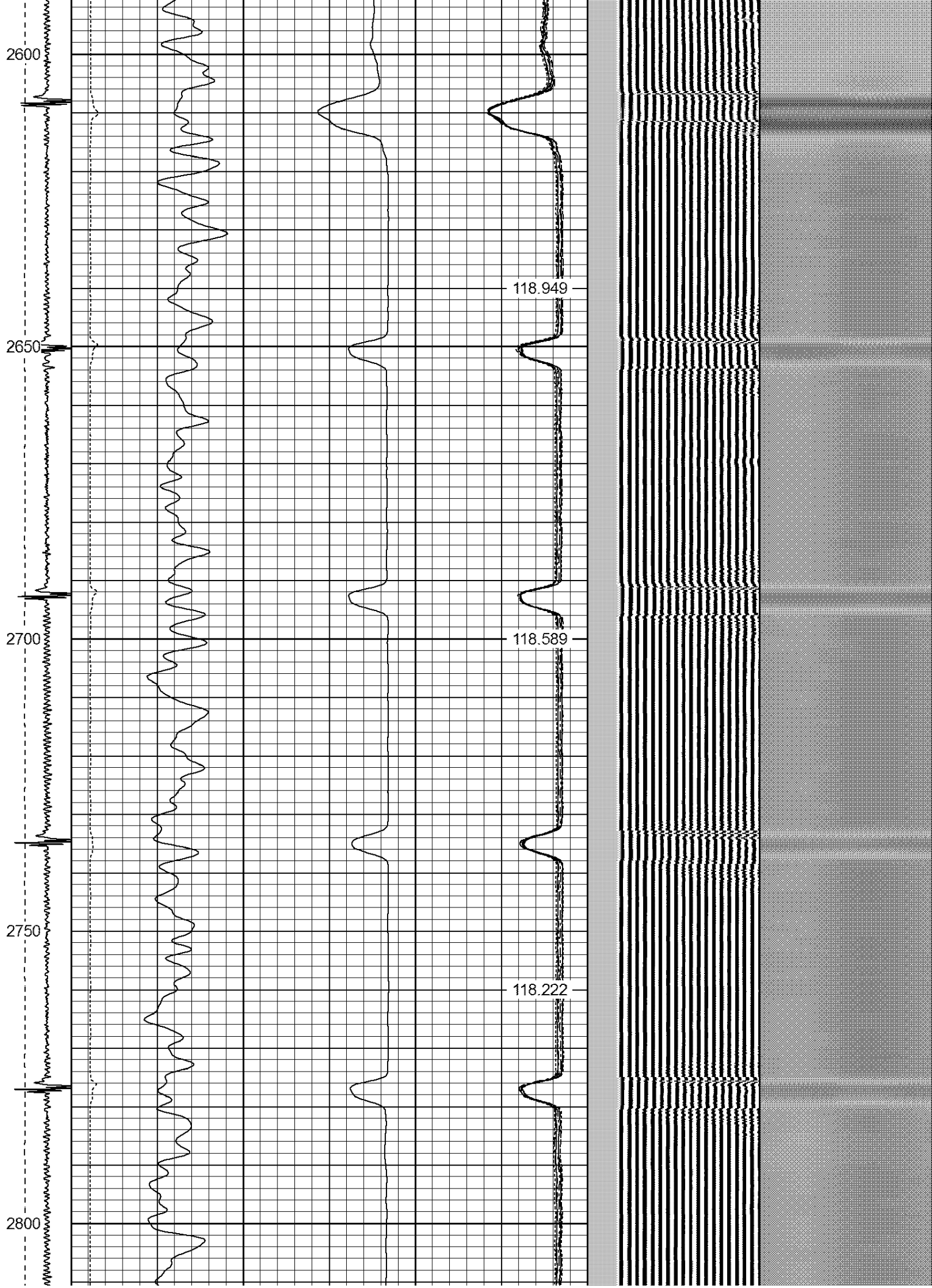


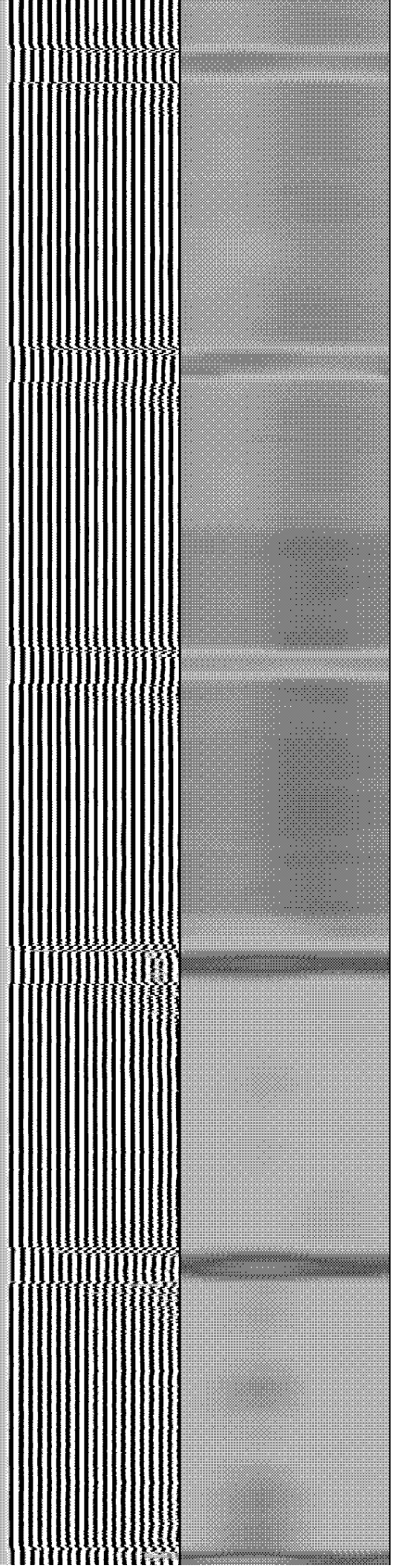
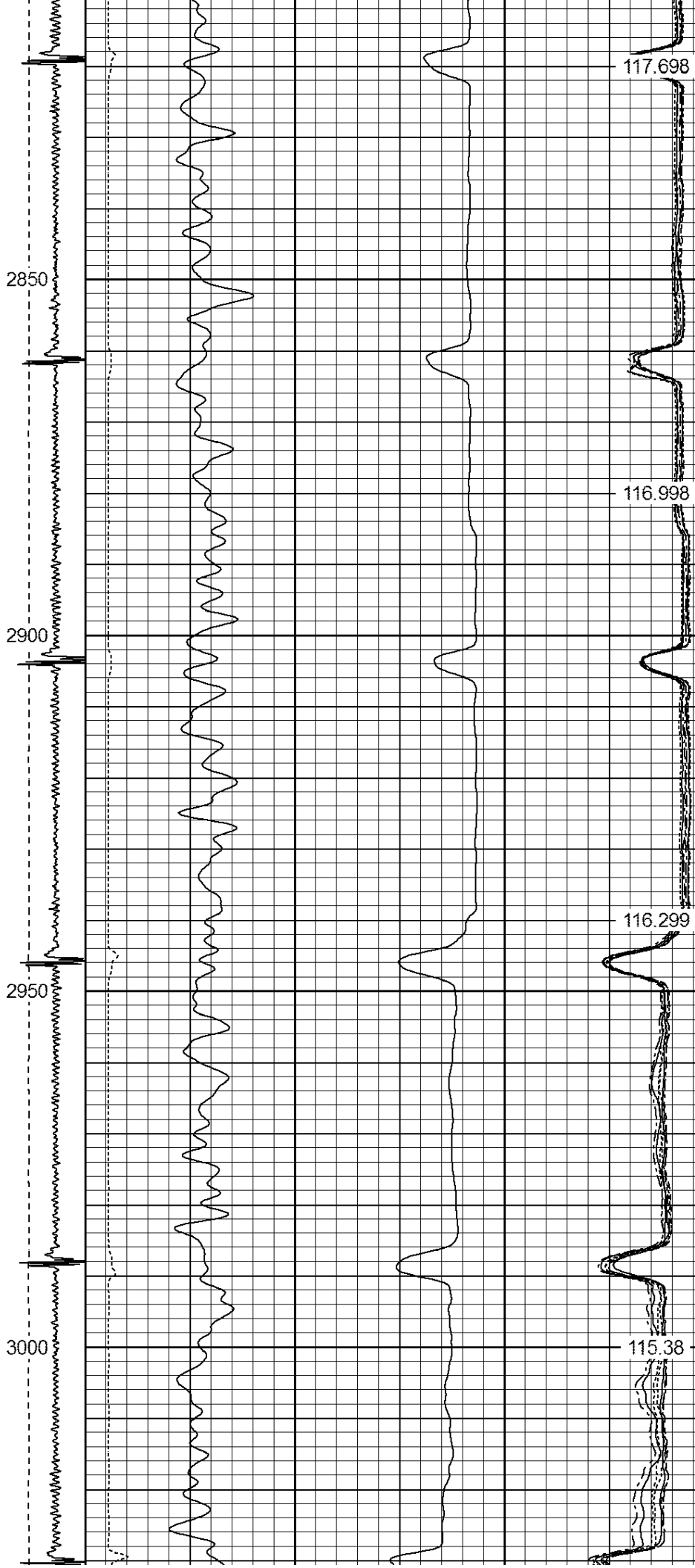












3050

3100

3150

3200

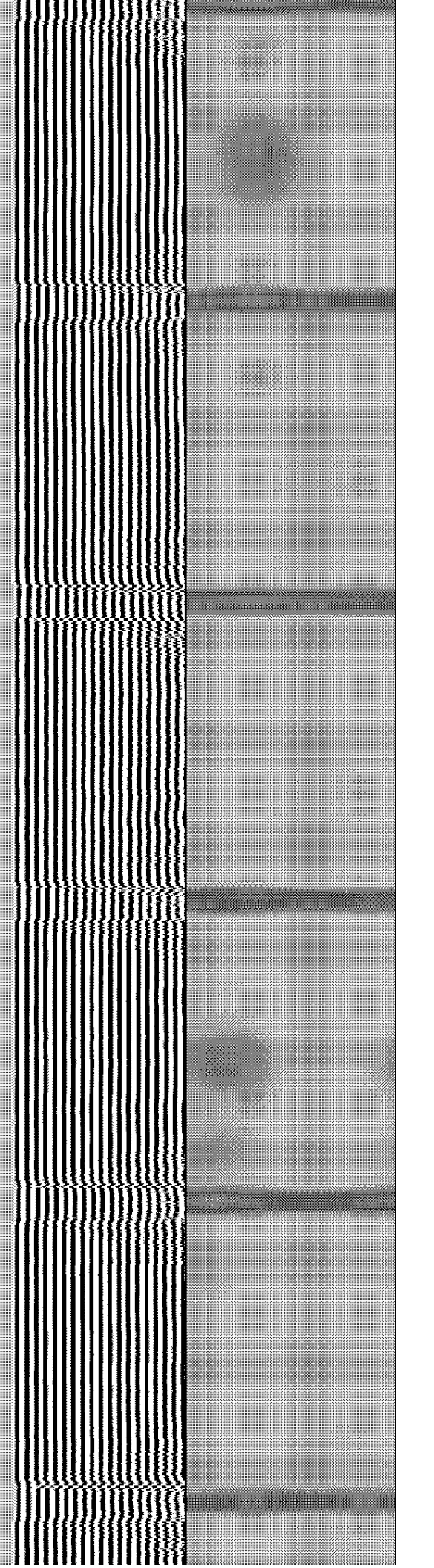
3250

114.438

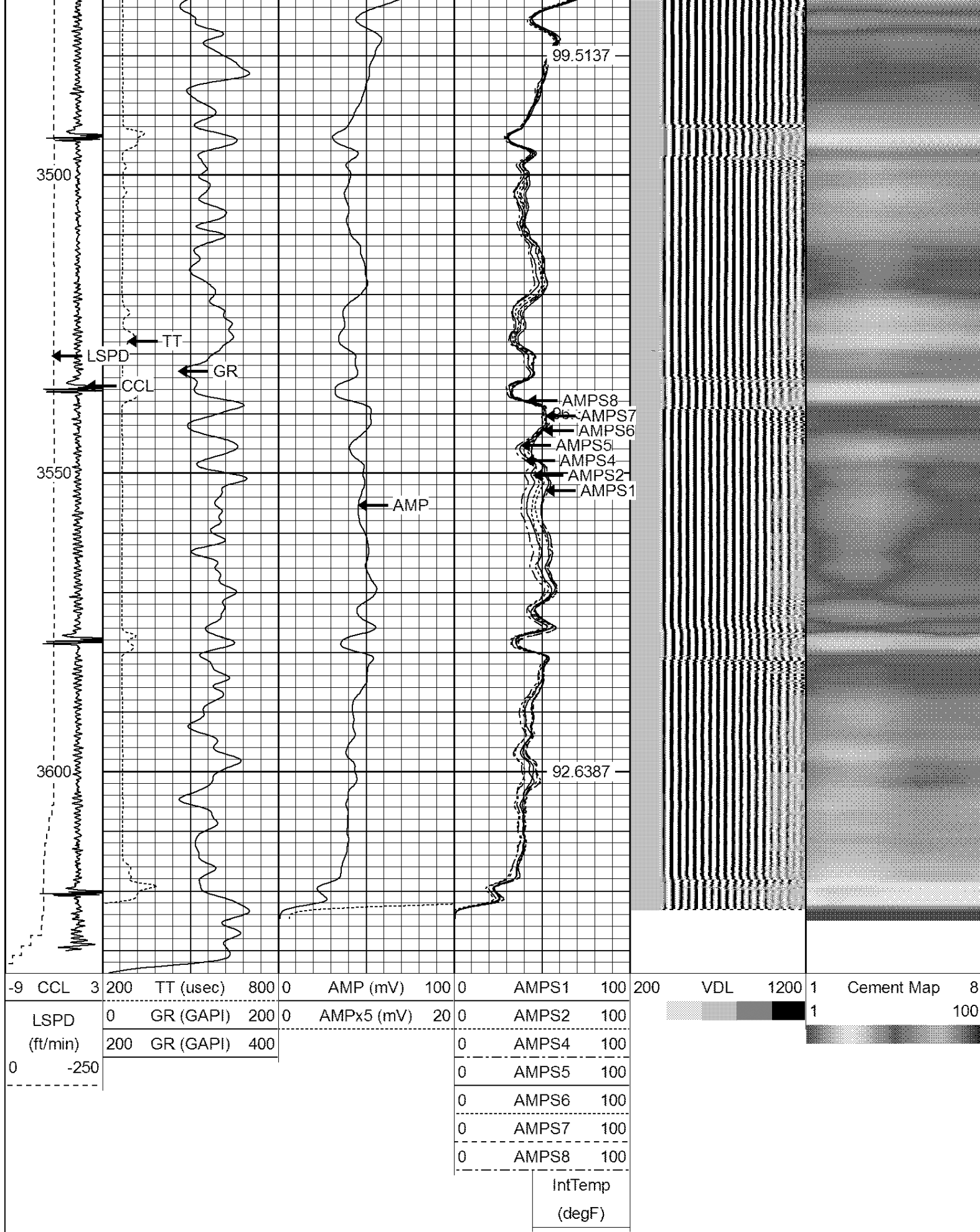
113.307

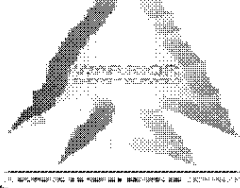
110.177

108.578









WARRIOR
ENERGY SERVICES

Well	Cannon Land 16-3A
Field	Wattenberg
County	Weld
State	CO