

Verdad Oil & Gas Corporation

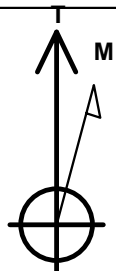
Well Name: **Cervi 03N-63W-34-1N**

Surface Location: Cervi 03N-63W-34-1N Sec.34-T3N-R63W
North American Datum 1983 , US State Plane 1983 , Colorado Northern Zone
Ground Elevation: 4755.0

+N/-S	+E/-W	Northing	Easting	Latitude	Longitude	Slot
0.0	0.0	1313090.65	3300235.78	40.187836	-104.425331	
RKB - 16.5' WELL @ 4771.5ft (RKB - 16.5')						

WELLBORE TARGET DETAILS

Name	TVD	+N/-S	+E/-W	Shape
460' Setback BHL	1.0	-4328.6	-1000.0	Polygon
460' Setback SHL	1.0	5.0	-1000.0	Polygon
Sectionline	1.0	465.0	-1000.0	Polygon
SHL 465'FNL & 2175'FWL	1.0	0.0	0.0	Point
BHL 460'FSL & 2180'FWL	6466.5	-4328.6	9.5	Point



Azimuths to True North
Magnetic North: 8.19°

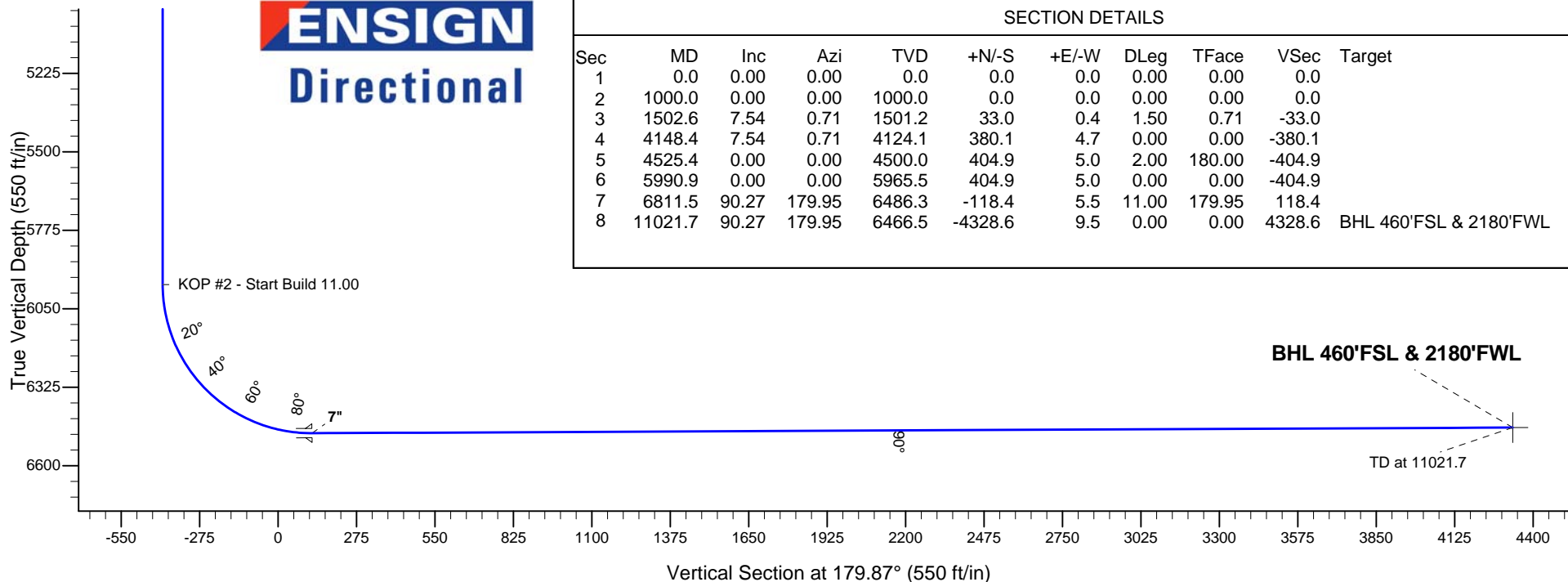
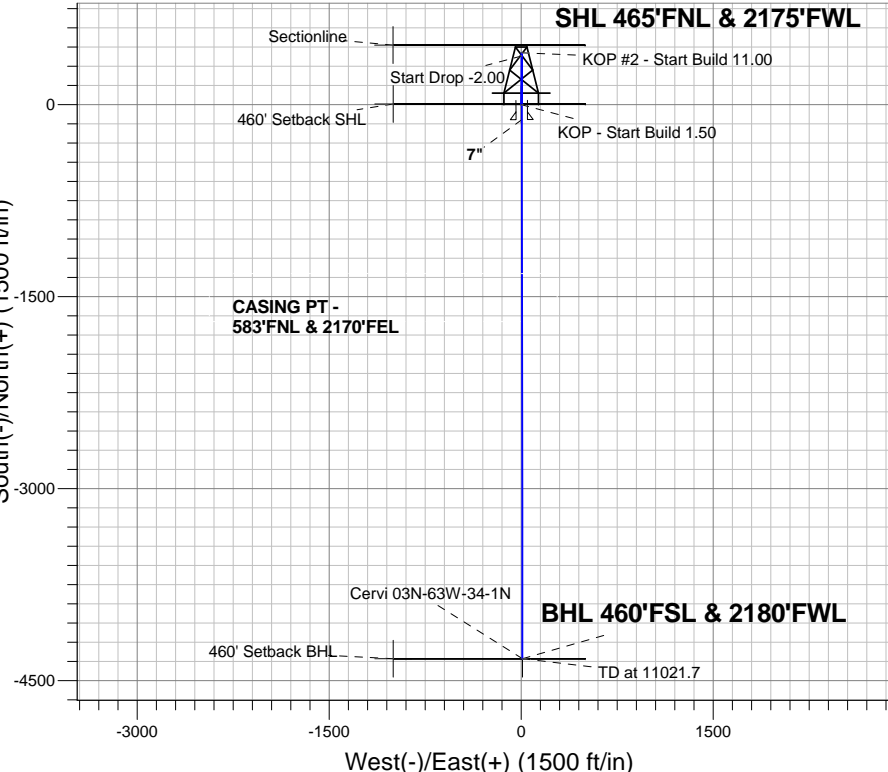
Magnetic Field
Strength: 52682.3snT
Dip Angle: 66.81°
Date: 12/31/2014
Model: IGRF2010

Cervi 03N-63W-34-1N Sec.34-T3N-R63W
Cervi 03N-63W-34-1N
Plan #1 (1-29-15)

ANNOTATIONS

TVD	MD	Annotation
1000.0	1000.0	KOP - Start Build 1.50
4124.1	4148.4	Start Drop -2.00
5965.5	5990.9	KOP #2 - Start Build 11.00
6466.5	11021.7	TD at 11021.7

South(-)/North(+) (1500 ft/in)



SECTION DETAILS

Sec	MD	Inc	Azi	TVD	+N/-S	+E/-W	DLeg	TFace	VSec	Target
1	0.0	0.00	0.00	0.0	0.0	0.0	0.00	0.00	0.0	
2	1000.0	0.00	0.00	1000.0	0.0	0.0	0.00	0.00	0.0	
3	1502.6	7.54	0.71	1501.2	33.0	0.4	1.50	0.71	-33.0	
4	4148.4	7.54	0.71	4124.1	380.1	4.7	0.00	0.00	-380.1	
5	4525.4	0.00	0.00	4500.0	404.9	5.0	2.00	180.00	-404.9	
6	5990.9	0.00	0.00	5965.5	404.9	5.0	0.00	0.00	-404.9	
7	6811.5	90.27	179.95	6486.3	-118.4	5.5	11.00	179.95	118.4	
8	11021.7	90.27	179.95	6466.5	-4328.6	9.5	0.00	0.00	4328.6	BHL 460'FSL & 2180'FWL



Verdad Oil & Gas Corporation

SEC.34-T3N-R63W

Cervi 03N-63W-34-1N Sec.34-T3N-R63W

Cervi 03N-63W-34-1N

Wellbore #1

Plan: Plan #1 (1-29-15)

Standard Planning Report

29 January, 2015

Database:	landmark	Local Co-ordinate Reference:	Well Cervi 03N-63W-34-1N
Company:	Verdad Oil & Gas Corporation	TVD Reference:	WELL @ 4771.5ft (RKB - 16.5')
Project:	SEC.34-T3N-R63W	MD Reference:	WELL @ 4771.5ft (RKB - 16.5')
Site:	Cervi 03N-63W-34-1N Sec.34-T3N-R63W	North Reference:	True
Well:	Cervi 03N-63W-34-1N	Survey Calculation Method:	Minimum Curvature
Wellbore:	Wellbore #1		
Design:	Plan #1 (1-29-15)		

Project	SEC.34-T3N-R63W, Weld County, Colorado		
Map System:	US State Plane 1983	System Datum:	Mean Sea Level
Geo Datum:	North American Datum 1983		Using Well Reference Point
Map Zone:	Colorado Northern Zone		Using geodetic scale factor

Site						Cervi 03N-63W-34-1N Sec.34-T3N-R63W											
Site Position:						Northing:			1,313,090.66ft			Latitude:			40.187836		
From:			Lat/Long			Easting:			3,300,235.78ft			Longitude:			-104.425331		
Position Uncertainty:			0.0 ft			Slot Radius:			"			Grid Convergence:			0.69 °		

Well	Cervi 03N-63W-34-1N					
Well Position	+N-S	0.0 ft	Northing:	1,313,090.65 ft	Latitude:	40.187836
	+E-W	0.0 ft	Easting:	3,300,235.78 ft	Longitude:	-104.425331
Position Uncertainty		0.0 ft	Wellhead Elevation:	ft	Ground Level:	4,755.0 ft

Wellbore	Wellbore #1				
Magnetics	Model Name	Sample Date	Declination (°)	Dip Angle (°)	Field Strength (nT)
	IGRF2010	12/31/2014	8.19	66.81	52,682

Design	Plan #1 (1-29-15)			
Audit Notes:				
Version:	Phase:	PROTOTYPE	Tie On Depth:	0.0
Vertical Section:	Depth From (TVD) (ft)	+N/-S (ft)	+E/-W (ft)	Direction (°)
	0.0	0.0	0.0	179.87

Plan Sections										
Measured Depth (ft)	Inclination (°)	Azimuth (°)	Vertical Depth (ft)	+N/-S (ft)	+E/-W (ft)	Dogleg Rate (°/100ft)	Build Rate (°/100ft)	Turn Rate (°/100ft)	TFO (°)	Target
0.0	0.00	0.00	0.0	0.0	0.0	0.00	0.00	0.00	0.00	
1,000.0	0.00	0.00	1,000.0	0.0	0.0	0.00	0.00	0.00	0.00	
1,502.6	7.54	0.71	1,501.2	33.0	0.4	1.50	1.50	0.00	0.71	
4,148.4	7.54	0.71	4,124.1	380.1	4.7	0.00	0.00	0.00	0.00	
4,525.4	0.00	0.00	4,500.0	404.9	5.0	2.00	-2.00	0.00	180.00	
5,990.9	0.00	0.00	5,965.5	404.9	5.0	0.00	0.00	0.00	0.00	
6,811.5	90.27	179.95	6,486.3	-118.4	5.5	11.00	11.00	0.00	179.95	
11,021.7	90.27	179.95	6,466.5	-4,328.6	9.5	0.00	0.00	0.00	0.00	BHL 460'FSL & 21E

Database: landmark
Company: Verdad Oil & Gas Corporation
Project: SEC.34-T3N-R63W
Site: Cervi 03N-63W-34-1N Sec.34-T3N-R63W
Well: Cervi 03N-63W-34-1N
Wellbore: Wellbore #1
Design: Plan #1 (1-29-15)

Local Co-ordinate Reference: Well Cervi 03N-63W-34-1N
TVD Reference: WELL @ 4771.5ft (RKB - 16.5')
MD Reference: WELL @ 4771.5ft (RKB - 16.5')
North Reference: True
Survey Calculation Method: Minimum Curvature

Planned Survey									
Measured Depth (ft)	Inclination (°)	Azimuth (°)	Vertical Depth (ft)	+N/-S (ft)	+E/-W (ft)	Vertical Section (ft)	Dogleg Rate (°/100ft)	Build Rate (°/100ft)	Turn Rate (°/100ft)
0.0	0.00	0.00	0.0	0.0	0.0	0.0	0.00	0.00	0.00
100.0	0.00	0.00	100.0	0.0	0.0	0.0	0.00	0.00	0.00
200.0	0.00	0.00	200.0	0.0	0.0	0.0	0.00	0.00	0.00
300.0	0.00	0.00	300.0	0.0	0.0	0.0	0.00	0.00	0.00
400.0	0.00	0.00	400.0	0.0	0.0	0.0	0.00	0.00	0.00
500.0	0.00	0.00	500.0	0.0	0.0	0.0	0.00	0.00	0.00
600.0	0.00	0.00	600.0	0.0	0.0	0.0	0.00	0.00	0.00
700.0	0.00	0.00	700.0	0.0	0.0	0.0	0.00	0.00	0.00
800.0	0.00	0.00	800.0	0.0	0.0	0.0	0.00	0.00	0.00
900.0	0.00	0.00	900.0	0.0	0.0	0.0	0.00	0.00	0.00
1,000.0	0.00	0.00	1,000.0	0.0	0.0	0.0	0.00	0.00	0.00
KOP - Start Build 1.50									
1,100.0	1.50	0.71	1,100.0	1.3	0.0	-1.3	1.50	1.50	0.00
1,200.0	3.00	0.71	1,199.9	5.2	0.1	-5.2	1.50	1.50	0.00
1,300.0	4.50	0.71	1,299.7	11.8	0.1	-11.8	1.50	1.50	0.00
1,400.0	6.00	0.71	1,399.3	20.9	0.3	-20.9	1.50	1.50	0.00
1,500.0	7.50	0.71	1,498.6	32.7	0.4	-32.7	1.50	1.50	0.00
1,502.6	7.54	0.71	1,501.2	33.0	0.4	-33.0	1.50	1.50	0.00
1,600.0	7.54	0.71	1,597.7	45.8	0.6	-45.8	0.00	0.00	0.00
1,700.0	7.54	0.71	1,696.8	58.9	0.7	-58.9	0.00	0.00	0.00
1,800.0	7.54	0.71	1,796.0	72.0	0.9	-72.0	0.00	0.00	0.00
1,900.0	7.54	0.71	1,895.1	85.2	1.1	-85.2	0.00	0.00	0.00
2,000.0	7.54	0.71	1,994.3	98.3	1.2	-98.3	0.00	0.00	0.00
2,100.0	7.54	0.71	2,093.4	111.4	1.4	-111.4	0.00	0.00	0.00
2,200.0	7.54	0.71	2,192.5	124.5	1.5	-124.5	0.00	0.00	0.00
2,300.0	7.54	0.71	2,291.7	137.6	1.7	-137.6	0.00	0.00	0.00
2,400.0	7.54	0.71	2,390.8	150.7	1.9	-150.7	0.00	0.00	0.00
2,500.0	7.54	0.71	2,489.9	163.9	2.0	-163.9	0.00	0.00	0.00
2,600.0	7.54	0.71	2,589.1	177.0	2.2	-177.0	0.00	0.00	0.00
2,700.0	7.54	0.71	2,688.2	190.1	2.3	-190.1	0.00	0.00	0.00
2,800.0	7.54	0.71	2,787.3	203.2	2.5	-203.2	0.00	0.00	0.00
2,900.0	7.54	0.71	2,886.5	216.3	2.7	-216.3	0.00	0.00	0.00
3,000.0	7.54	0.71	2,985.6	229.5	2.8	-229.5	0.00	0.00	0.00
3,100.0	7.54	0.71	3,084.7	242.6	3.0	-242.6	0.00	0.00	0.00
3,200.0	7.54	0.71	3,183.9	255.7	3.2	-255.7	0.00	0.00	0.00
3,300.0	7.54	0.71	3,283.0	268.8	3.3	-268.8	0.00	0.00	0.00
3,400.0	7.54	0.71	3,382.1	281.9	3.5	-281.9	0.00	0.00	0.00
3,500.0	7.54	0.71	3,481.3	295.1	3.6	-295.1	0.00	0.00	0.00
3,600.0	7.54	0.71	3,580.4	308.2	3.8	-308.2	0.00	0.00	0.00
3,700.0	7.54	0.71	3,679.6	321.3	4.0	-321.3	0.00	0.00	0.00
3,800.0	7.54	0.71	3,778.7	334.4	4.1	-334.4	0.00	0.00	0.00
3,900.0	7.54	0.71	3,877.8	347.5	4.3	-347.5	0.00	0.00	0.00
4,000.0	7.54	0.71	3,977.0	360.7	4.5	-360.7	0.00	0.00	0.00
4,100.0	7.54	0.71	4,076.1	373.8	4.6	-373.8	0.00	0.00	0.00
4,148.4	7.54	0.71	4,124.1	380.1	4.7	-380.1	0.00	0.00	0.00
Start Drop -2.00									
4,200.0	6.51	0.71	4,175.3	386.4	4.8	-386.4	2.00	-2.00	0.00
4,300.0	4.51	0.71	4,274.8	396.0	4.9	-396.0	2.00	-2.00	0.00
4,400.0	2.51	0.71	4,374.6	402.2	5.0	-402.1	2.00	-2.00	0.00
4,500.0	0.51	0.71	4,474.6	404.8	5.0	-404.8	2.00	-2.00	0.00
4,525.4	0.00	0.00	4,500.0	404.9	5.0	-404.9	2.00	-2.00	0.00
4,600.0	0.00	0.00	4,574.6	404.9	5.0	-404.9	0.00	0.00	0.00
4,700.0	0.00	0.00	4,674.6	404.9	5.0	-404.9	0.00	0.00	0.00
4,800.0	0.00	0.00	4,774.6	404.9	5.0	-404.9	0.00	0.00	0.00

Database: landmark
Company: Verdad Oil & Gas Corporation
Project: SEC.34-T3N-R63W
Site: Cervi 03N-63W-34-1N Sec.34-T3N-R63W
Well: Cervi 03N-63W-34-1N
Wellbore: Wellbore #1
Design: Plan #1 (1-29-15)

Local Co-ordinate Reference: Well Cervi 03N-63W-34-1N
TVD Reference: WELL @ 4771.5ft (RKB - 16.5')
MD Reference: WELL @ 4771.5ft (RKB - 16.5')
North Reference: True
Survey Calculation Method: Minimum Curvature

Planned Survey									
Measured Depth (ft)	Inclination (°)	Azimuth (°)	Vertical Depth (ft)	+N/-S (ft)	+E/-W (ft)	Vertical Section (ft)	Dogleg Rate (°/100ft)	Build Rate (°/100ft)	Turn Rate (°/100ft)
4,900.0	0.00	0.00	4,874.6	404.9	5.0	-404.9	0.00	0.00	0.00
5,000.0	0.00	0.00	4,974.6	404.9	5.0	-404.9	0.00	0.00	0.00
5,100.0	0.00	0.00	5,074.6	404.9	5.0	-404.9	0.00	0.00	0.00
5,200.0	0.00	0.00	5,174.6	404.9	5.0	-404.9	0.00	0.00	0.00
5,300.0	0.00	0.00	5,274.6	404.9	5.0	-404.9	0.00	0.00	0.00
5,400.0	0.00	0.00	5,374.6	404.9	5.0	-404.9	0.00	0.00	0.00
5,500.0	0.00	0.00	5,474.6	404.9	5.0	-404.9	0.00	0.00	0.00
5,600.0	0.00	0.00	5,574.6	404.9	5.0	-404.9	0.00	0.00	0.00
5,700.0	0.00	0.00	5,674.6	404.9	5.0	-404.9	0.00	0.00	0.00
5,800.0	0.00	0.00	5,774.6	404.9	5.0	-404.9	0.00	0.00	0.00
5,900.0	0.00	0.00	5,874.6	404.9	5.0	-404.9	0.00	0.00	0.00
5,990.9	0.00	0.00	5,965.5	404.9	5.0	-404.9	0.00	0.00	0.00
KOP #2 - Start Build 11.00									
6,000.0	1.00	179.95	5,974.6	404.8	5.0	-404.8	11.02	11.02	0.00
6,100.0	12.00	179.95	6,073.8	393.5	5.0	-393.5	11.00	11.00	0.00
6,200.0	23.00	179.95	6,169.0	363.5	5.0	-363.5	11.00	11.00	0.00
6,300.0	34.00	179.95	6,256.8	315.8	5.1	-315.8	11.00	11.00	0.00
6,400.0	45.00	179.95	6,333.8	252.3	5.1	-252.3	11.00	11.00	0.00
6,500.0	56.00	179.95	6,397.3	175.3	5.2	-175.3	11.00	11.00	0.00
6,600.0	67.00	179.95	6,444.9	87.5	5.3	-87.5	11.00	11.00	0.00
6,700.0	78.00	179.95	6,475.0	-7.7	5.4	7.7	11.00	11.00	0.00
6,800.0	89.00	179.95	6,486.3	-106.9	5.5	106.9	11.00	11.00	0.00
6,811.5	90.27	179.95	6,486.3	-118.4	5.5	118.4	11.00	11.00	0.00
7"									
6,900.0	90.27	179.95	6,485.9	-206.9	5.6	206.9	0.00	0.00	0.00
7,000.0	90.27	179.95	6,485.5	-306.9	5.7	306.9	0.00	0.00	0.00
7,100.0	90.27	179.95	6,485.0	-406.9	5.8	406.9	0.00	0.00	0.00
7,200.0	90.27	179.95	6,484.5	-506.9	5.9	506.9	0.00	0.00	0.00
7,300.0	90.27	179.95	6,484.0	-606.9	6.0	606.9	0.00	0.00	0.00
7,400.0	90.27	179.95	6,483.6	-706.9	6.1	706.9	0.00	0.00	0.00
7,500.0	90.27	179.95	6,483.1	-806.9	6.2	806.9	0.00	0.00	0.00
7,600.0	90.27	179.95	6,482.6	-906.9	6.2	906.9	0.00	0.00	0.00
7,700.0	90.27	179.95	6,482.2	-1,006.9	6.3	1,006.9	0.00	0.00	0.00
7,800.0	90.27	179.95	6,481.7	-1,106.9	6.4	1,106.9	0.00	0.00	0.00
7,900.0	90.27	179.95	6,481.2	-1,206.9	6.5	1,206.9	0.00	0.00	0.00
8,000.0	90.27	179.95	6,480.7	-1,306.9	6.6	1,306.9	0.00	0.00	0.00
8,100.0	90.27	179.95	6,480.3	-1,406.9	6.7	1,406.9	0.00	0.00	0.00
8,200.0	90.27	179.95	6,479.8	-1,506.9	6.8	1,506.9	0.00	0.00	0.00
8,300.0	90.27	179.95	6,479.3	-1,606.9	6.9	1,606.9	0.00	0.00	0.00
8,400.0	90.27	179.95	6,478.9	-1,706.9	7.0	1,706.9	0.00	0.00	0.00
8,500.0	90.27	179.95	6,478.4	-1,806.9	7.1	1,806.9	0.00	0.00	0.00
8,600.0	90.27	179.95	6,477.9	-1,906.9	7.2	1,906.9	0.00	0.00	0.00
8,700.0	90.27	179.95	6,477.4	-2,006.9	7.3	2,006.9	0.00	0.00	0.00
8,800.0	90.27	179.95	6,477.0	-2,106.9	7.4	2,106.9	0.00	0.00	0.00
8,900.0	90.27	179.95	6,476.5	-2,206.9	7.5	2,206.9	0.00	0.00	0.00
9,000.0	90.27	179.95	6,476.0	-2,306.9	7.6	2,306.9	0.00	0.00	0.00
9,100.0	90.27	179.95	6,475.6	-2,406.9	7.7	2,406.9	0.00	0.00	0.00
9,200.0	90.27	179.95	6,475.1	-2,506.9	7.8	2,506.9	0.00	0.00	0.00
9,300.0	90.27	179.95	6,474.6	-2,606.9	7.9	2,606.9	0.00	0.00	0.00
9,400.0	90.27	179.95	6,474.1	-2,706.9	8.0	2,706.9	0.00	0.00	0.00
9,500.0	90.27	179.95	6,473.7	-2,806.9	8.1	2,806.9	0.00	0.00	0.00
9,600.0	90.27	179.95	6,473.2	-2,906.9	8.1	2,906.9	0.00	0.00	0.00
9,700.0	90.27	179.95	6,472.7	-3,006.9	8.2	3,006.9	0.00	0.00	0.00
9,800.0	90.27	179.95	6,472.3	-3,106.9	8.3	3,106.9	0.00	0.00	0.00

Database: landmark
Company: Verdad Oil & Gas Corporation
Project: SEC.34-T3N-R63W
Site: Cervi 03N-63W-34-1N Sec.34-T3N-R63W
Well: Cervi 03N-63W-34-1N
Wellbore: Wellbore #1
Design: Plan #1 (1-29-15)

Local Co-ordinate Reference: Well Cervi 03N-63W-34-1N
TVD Reference: WELL @ 4771.5ft (RKB - 16.5')
MD Reference: WELL @ 4771.5ft (RKB - 16.5')
North Reference: True
Survey Calculation Method: Minimum Curvature

Planned Survey

Measured Depth (ft)	Inclination (°)	Azimuth (°)	Vertical Depth (ft)	+N/-S (ft)	+E/-W (ft)	Vertical Section (ft)	Dogleg Rate (°/100ft)	Build Rate (°/100ft)	Turn Rate (°/100ft)
9,900.0	90.27	179.95	6,471.8	-3,206.9	8.4	3,206.9	0.00	0.00	0.00
10,000.0	90.27	179.95	6,471.3	-3,306.9	8.5	3,306.9	0.00	0.00	0.00
10,100.0	90.27	179.95	6,470.8	-3,406.9	8.6	3,406.9	0.00	0.00	0.00
10,200.0	90.27	179.95	6,470.4	-3,506.9	8.7	3,506.9	0.00	0.00	0.00
10,300.0	90.27	179.95	6,469.9	-3,606.9	8.8	3,606.9	0.00	0.00	0.00
10,400.0	90.27	179.95	6,469.4	-3,706.9	8.9	3,706.9	0.00	0.00	0.00
10,500.0	90.27	179.95	6,469.0	-3,806.9	9.0	3,806.9	0.00	0.00	0.00
10,600.0	90.27	179.95	6,468.5	-3,906.9	9.1	3,906.9	0.00	0.00	0.00
10,700.0	90.27	179.95	6,468.0	-4,006.9	9.2	4,006.9	0.00	0.00	0.00
10,800.0	90.27	179.95	6,467.5	-4,106.9	9.3	4,106.9	0.00	0.00	0.00
10,900.0	90.27	179.95	6,467.1	-4,206.9	9.4	4,206.9	0.00	0.00	0.00
11,000.0	90.27	179.95	6,466.6	-4,306.9	9.5	4,306.9	0.00	0.00	0.00
11,021.7	90.27	179.95	6,466.5	-4,328.6	9.5	4,328.6	0.00	0.00	0.00
TD at 11021.7									

Targets

Target Name - hit/miss target - Shape	Dip Angle (°)	Dip Dir. (°)	TVD (ft)	+N/-S (ft)	+E/-W (ft)	Northing (ft)	Easting (ft)	Latitude	Longitude
460' Setback SHL - plan misses by 1000.0ft at 1.0ft MD (1.0 TVD, 0.0 N, 0.0 E) - Polygon	0.00	0.00	1.0	5.0	-1,000.0	1,313,083.53	3,299,235.84	40.187850	-104.428910
Point 1			1.0	0.0	0.0	1,313,083.53	3,299,235.84		
Point 2			1.0	0.0	1,500.0	1,313,101.71	3,300,735.66		
SHL 465'FNL & 2175' - plan hits target - Point	0.00	0.00	1.0	0.0	0.0	1,313,090.66	3,300,235.78	40.187836	-104.425331
460' Setback BHL - plan misses by 4442.6ft at 1.0ft MD (1.0 TVD, 0.0 N, 0.0 E) - Polygon	0.00	0.00	1.0	-4,328.6	-1,000.0	1,308,750.44	3,299,288.35	40.175954	-104.428910
Point 1			1.0	0.0	0.0	1,308,750.44	3,299,288.35		
Point 2			1.0	0.0	1,500.0	1,308,768.62	3,300,788.18		
Sectionline - plan misses by 1102.8ft at 1.0ft MD (1.0 TVD, 0.0 N, 0.0 E) - Polygon	0.00	0.00	1.0	465.0	-1,000.0	1,313,543.48	3,299,230.26	40.189112	-104.428910
Point 1			1.0	0.0	0.0	1,313,543.48	3,299,230.26		
Point 2			1.0	0.0	1,500.0	1,313,561.65	3,300,730.09		
BHL 460'FSL & 2180' - plan hits target - Point	0.00	0.00	6,466.5	-4,328.6	9.5	1,308,762.69	3,300,297.73	40.175954	-104.425297

Casing Points

Measured Depth (ft)	Vertical Depth (ft)	Name	Casing Diameter (")	Hole Diameter (")
6,811.5	6,486.3	7"	7	7-1/2

Database:	landmark	Local Co-ordinate Reference:	Well Cervi 03N-63W-34-1N
Company:	Verdad Oil & Gas Corporation	TVD Reference:	WELL @ 4771.5ft (RKB - 16.5')
Project:	SEC.34-T3N-R63W	MD Reference:	WELL @ 4771.5ft (RKB - 16.5')
Site:	Cervi 03N-63W-34-1N Sec.34-T3N-R63W	North Reference:	True
Well:	Cervi 03N-63W-34-1N	Survey Calculation Method:	Minimum Curvature
Wellbore:	Wellbore #1		
Design:	Plan #1 (1-29-15)		

Plan Annotations				
Measured Depth (ft)	Vertical Depth (ft)	Local Coordinates		Comment
		+N/-S (ft)	+E/-W (ft)	
1,000.0	1,000.0	0.0	0.0	KOP - Start Build 1.50
4,148.4	4,124.1	380.1	4.7	Start Drop -2.00
5,990.9	5,965.5	404.9	5.0	KOP #2 - Start Build 11.00
11,021.7	6,466.5	-4,328.6	9.5	TD at 11021.7