

Berry 8-8

Existing Features	
KB	12

Bottom of Foxhills (FHM)	680
--------------------------	-----

Surface csg shoe at	799
---------------------	-----

TOC (CBL)	3502
-----------	------

Sussex Top	3952
------------	------

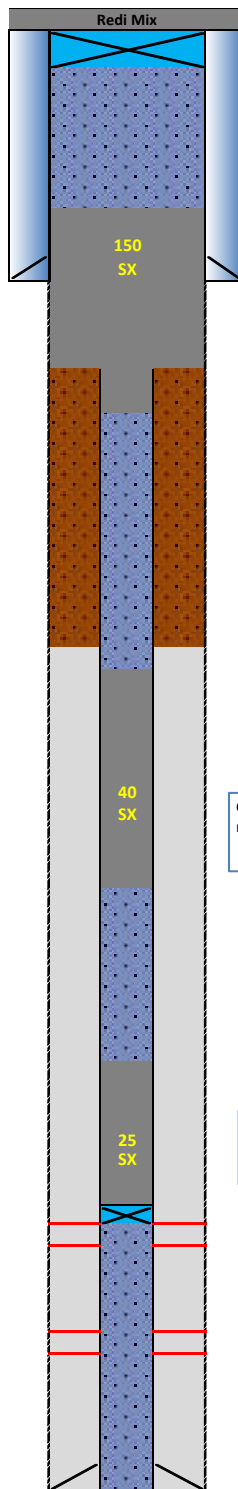
Sussex Bottom	4201
---------------	------

Shannon Base	4551
Not producing Shannon w/in 1 mile	

Niobrara Top	6826
Perf Top	6846
Perf Bottom	6902

Codell	7101
Perf Top	7102
Perf Bottom	7114

PBMD	7235
4 1/2" 11.6# CSG	7262



Proposed Additions for P&A

80	CIBP 8 5/8" 24#
----	-----------------

700	TOC
-----	-----

Cement Blend: Type III w/cello flake and CaCl₂ as necessary, mixed at 14.8 ppg and 1.33 cuft/sk.

1000	Casing Stub
1100	BOC

3750	TOC
------	-----

Cement Blend: "G" w/ 0.4% CD-32, 0.4% ASA-301, mixed at 15.8 ppg and 1.15 cuft/sk.

4250	BOC
------	-----

6390	TOC
------	-----

Cement Blend: "G" w/ 20% silica flour, 0.4% CD-32, 0.4% ASA-301 and R-3 to achieve 2:30 pump time. Mix at 15.8 ppg and 1.38 cuft/sk.

6790	CIBP 4 1/2" 11.6#
------	-------------------

API#	05-123-21688			
Wins:	76837			
Equipment	Specs.	Depth	Capacity (bbl/ft)	Capacity ft ³ /ft
Surface Casing	8 5/8" (24#)	799	0.0636	0.3575
Production Casing	4 1/2" (11.6#)	7262	0.0155	0.0873
Tubing Size	2 3/8" (4.7)	7066	0.003870	0.02171
Hole Size (TOP)	8.5	N/A	0.0702	0.3941
Hole Size (SU/SH)	N/A	N/A	N/A	N/A
Hole Size (NB)	N/A	N/A	N/A	N/A

Cement Calculations				
Section	Volume cu-ft	Cement Sacks	Excess	
Open Hole	110.89	83.38	40%	Foxhills Plug 8.5 in. hole
Surface casing	35.39	26.61		
Production casing	8.73	6.56		
FX Total	146.28	116.55	150	
Production casing	43.65	37.95652		
SU Total	43.65	37.95652	40	
Open Hole				
Production	34.92	25.30		
NB/CD Total	34.92	25.30	25	

Cement Yield	1.33	1.15	1.38
	FX	SX/SH	NB

Legend	
	Existing cement with CBL
	New cement
	Assumed cement w/ no CBL
	Cast Iron Cement Retainer
	Cast Iron Bridge Plug
	Mud
	Water + Biocide