

Noble Energy

CO, Weld County (NAD 83 NZ)
Sec 25 Twn 4 N Rng 65 W
Heartland State H01-74-1HN ST1
05-123-39550
PD 829



A Schlumberger Company

Final Survey Report

29-Oct-2014

Well Coordinates:	NAD83 CO State Plane, N Zone, US Feet
	N 40° 16' 36.22780" W 104° 36' 18.82800"
	1344913.63 usFt 3249651.6 usFt
Ground Level:	4834.00 ft MSL
TVD Reference:	KB 16ft @ 4850.00 ft MSL
Local Coordinate Origin:	Heartland State H01-74-1HN well head
Vertical Section Azimuth:	184.279 ° (Grid North)
North Reference:	Grid North

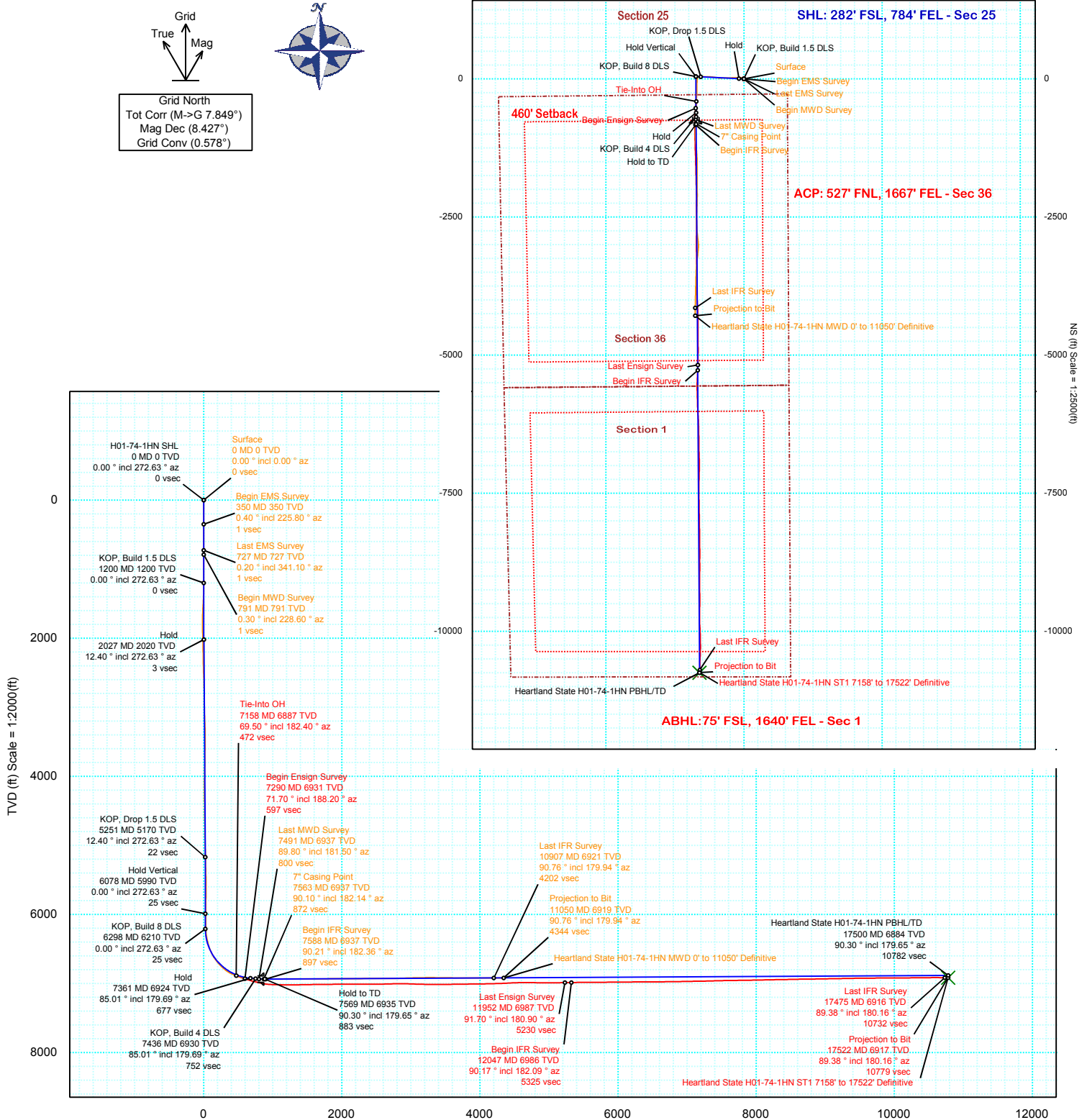
DOX Version: 2.8

Borehole:	Well:	Field:	Structure:
ST1	Heartland State H01-74-1HN	CO, Weld County (NAD 83 NZ)	25-04N-65W (Heartland State G36-75-1HN Pad) - PD 829

Gravity & Magnetic Parameters	Surface Location	NAD83 Colorado State Plane, Northern Zone, US Feet	Miscellaneous
Model: BGGM 2014 Dip: 66.861° Date: 21-Aug-2014	Lat: N 40 16 36.23 Northing: 1344913.85ftU	Grid Conv: 0.5782°	Heartland
MagDec: 8.427° FS: 52644.725nT Gravity FS: 999.019mgm (9.80665 Based)	Lon: W 104 36 18.54 Easting: 3249673.92ftU	Scale Fact: 0.99995695	State H01-74-1HN TVD Ref: KB 16ft(4850ft above MSL)
			Plan: Heartland State H01-74-1HN ST1 7158' to 17522' Definitive

PvA

EW (ft) Scale = 1:2500(ft)



Heartland State H01-74-1HN ST1 7158' to 17522' Definitive Survey Geodetic Report (Def Survey)

Report Date: September 17, 2014 - 03:25 PM
Client: Noble Energy
Field: CO, Weld County (NAD 83 NZ)
Structure / Slot: Noble 25-04N-65W (Heartland State G36-75-1HN Pad) - PD 829 / Heartland State H01-74-1HN
Well: Heartland State H01-74-1HN
Borehole: ST1
UWI / API#: Unknown / Unknown
Survey Name: Heartland State H01-74-1HN ST1 7158' to 17522' Definitive
Survey Date: August 21, 2014
Tort / AHD / DDI / ERD Ratio: 302.640 ° / 11638.662 ft / 6.944 / 1.658
Coordinate Reference System: NAD83 Colorado State Plane, Northern Zone, US Feet
Location Lat / Long: N 40° 16' 36.22780", W 104° 36' 18.54000"
Location Grid N/E Y/X: N 1344913.850 ftUS, E 3249673.920 ftUS
CRS Grid Convergence Angle: 0.5782 °
Grid Scale Factor: 0.99995695
Version / Patch: 2.8.551.0

Survey / DLS Computation: Minimum Curvature / Lubinski
Vertical Section Azimuth: 184.279 ° (Grid North)
Vertical Section Origin: 0.000 ft, 0.000 ft
TVD Reference Datum: KB 16ft
TVD Reference Elevation: 4850.000 ft above MSL
Seabed / Ground Elevation: 4834.000 ft above MSL
Magnetic Declination: 8.427 °
Total Gravity Field Strength: 999.0190mgn (9.80665 Based)
Gravity Model: GARM
Total Magnetic Field Strength: 52644.725 nT
Magnetic Dip Angle: 66.861 °
Declination Date: August 21, 2014
Magnetic Declination Model: BGGM 2014
North Reference: Grid North
Grid Convergence Used: 0.5782 °
Total Corr Mag North->Grid North: 7.8487 °
Local Coord Referenced To: Well Head

Comments	MD (ft)	Incl (°)	Azim Grid (°)	TVD (ft)	VSEC (ft)	NS (ft)	EW (ft)	DLS (°/100ft)	Northing (ftUS)	Easting (ftUS)	Latitude (N/S ° ' ")	Longitude (E/W ° ' ")
Tie-Into OH	7158.00	69.50	182.40	6887.48	472.24	-409.06	-861.98	N/A	1344504.81	3248811.98	N 40 16 32.27	W 104 36 29.71
Begin Ensign Survey	7290.00	71.70	188.20	6931.35	596.65	-532.96	-873.52	4.47	1344380.91	3248800.44	N 40 16 31.05	W 104 36 29.88
	7321.00	71.70	186.90	6941.09	626.03	-562.14	-877.39	3.98	1344351.74	3248796.57	N 40 16 30.76	W 104 36 29.93
	7352.00	72.10	186.50	6950.72	655.47	-591.40	-880.82	1.78	1344322.48	3248793.14	N 40 16 30.47	W 104 36 29.98
	7384.00	73.80	185.80	6960.10	686.05	-621.82	-884.10	5.71	1344292.06	3248789.86	N 40 16 30.17	W 104 36 30.03
	7415.00	75.70	184.30	6968.25	715.95	-651.61	-886.73	7.70	1344262.27	3248787.23	N 40 16 29.88	W 104 36 30.06
	7445.00	77.00	183.40	6975.33	745.10	-680.69	-888.69	5.22	1344233.19	3248785.27	N 40 16 29.59	W 104 36 30.09
	7477.00	77.10	182.30	6982.50	776.28	-711.84	-890.24	3.36	1344202.04	3248783.72	N 40 16 29.28	W 104 36 30.12
	7509.00	77.10	180.60	6989.65	807.43	-743.02	-891.03	5.18	1344170.86	3248782.93	N 40 16 28.97	W 104 36 30.13
	7539.00	77.40	180.00	6996.27	836.62	-772.28	-891.18	2.19	1344141.60	3248782.78	N 40 16 28.69	W 104 36 30.14
	7570.00	79.10	178.50	7002.58	866.85	-802.63	-890.78	7.25	1344111.26	3248783.18	N 40 16 28.39	W 104 36 30.14
	7601.00	82.00	178.40	7007.67	897.27	-833.19	-889.95	9.36	1344080.70	3248784.01	N 40 16 28.08	W 104 36 30.13
	7632.00	84.40	177.70	7011.34	927.87	-863.95	-888.91	8.06	1344049.94	3248785.05	N 40 16 27.78	W 104 36 30.12
	7663.00	86.20	177.80	7013.88	958.56	-894.82	-887.69	5.82	1344019.07	3248786.27	N 40 16 27.47	W 104 36 30.11
	7693.00	87.60	178.00	7015.50	988.33	-924.76	-886.60	4.71	1343989.13	3248787.36	N 40 16 27.18	W 104 36 30.10
	7785.00	89.10	179.80	7018.15	1079.88	-1016.70	-884.83	2.55	1343897.20	3248789.13	N 40 16 26.27	W 104 36 30.09
	7875.00	89.80	179.20	7019.02	1169.56	-1106.69	-884.05	1.02	1343807.21	3248789.91	N 40 16 25.38	W 104 36 30.09
	7964.00	90.10	178.60	7019.10	1258.17	-1195.67	-882.34	0.75	1343718.23	3248791.62	N 40 16 24.50	W 104 36 30.08
	8054.00	90.10	177.90	7018.94	1347.67	-1285.63	-879.59	0.78	1343628.28	3248794.37	N 40 16 23.61	W 104 36 30.05
	8144.00	90.90	177.70	7018.15	1437.10	-1375.56	-876.13	0.92	1343538.35	3248797.83	N 40 16 22.72	W 104 36 30.02
	8233.00	91.60	178.60	7016.21	1525.56	-1464.49	-873.26	1.28	1343449.43	3248800.70	N 40 16 21.84	W 104 36 30.00
	8323.00	90.80	179.20	7014.33	1615.15	-1554.45	-871.53	1.11	1343359.47	3248802.43	N 40 16 20.95	W 104 36 29.99
	8413.00	89.80	178.80	7013.86	1704.76	-1644.44	-869.96	1.20	1343269.49	3248804.00	N 40 16 20.07	W 104 36 29.98
	8502.00	90.60	178.20	7013.54	1793.31	-1733.40	-867.63	1.12	1343180.52	3248806.33	N 40 16 19.19	W 104 36 29.96
	8592.00	91.70	178.80	7011.74	1882.83	-1823.35	-865.28	1.39	1343090.58	3248808.68	N 40 16 18.30	W 104 36 29.94
	8682.00	90.80	178.10	7009.78	1972.34	-1913.30	-862.84	1.27	1343000.64	3248811.11	N 40 16 17.41	W 104 36 29.92
	8771.00	90.10	178.70	7009.08	2060.87	-2002.26	-860.36	1.04	1342911.68	3248813.60	N 40 16 16.53	W 104 36 29.90
	8861.00	89.50	179.20	7009.39	2150.48	-2092.24	-858.71	0.87	1342821.70	3248815.25	N 40 16 15.64	W 104 36 29.89
	8950.00	90.20	180.50	7009.62	2239.21	-2181.24	-858.48	1.66	1342732.71	3248815.48	N 40 16 14.76	W 104 36 29.90
	9040.00	90.00	180.50	7009.47	2329.02	-2271.24	-859.26	0.22	1342642.72	3248814.70	N 40 16 13.87	W 104 36 29.92
	9129.00	89.80	180.10	7009.62	2417.80	-2360.23	-859.73	0.50	1342553.72	3248814.23	N 40 16 12.99	W 104 36 29.94
	9219.00	90.30	179.70	7009.54	2507.54	-2450.23	-859.57	0.71	1342463.73	3248814.39	N 40 16 12.10	W 104 36 29.95
	9308.00	90.70	179.20	7008.77	2596.22	-2539.23	-858.72	0.72	1342374.74	3248815.24	N 40 16 11.22	W 104 36 29.95
	9398.00	91.80	179.10	7006.80	2685.84	-2629.19	-857.38	1.23	1342284.78	3248816.58	N 40 16 10.33	W 104 36 29.94
	9488.00	91.30	180.30	7004.37	2775.51	-2719.16	-856.91	1.44	1342194.82	3248817.05	N 40 16 9.44	W 104 36 29.95
	9578.00	89.90	181.20	7003.43	2865.33	-2809.14	-858.09	1.85	1342104.84	3248815.87	N 40 16 8.56	W 104 36 29.97
	9667.00	88.00	181.10	7005.06	2954.18	-2898.10	-859.88	2.14	1342015.88	3248814.08	N 40 16 7.68	W 104 36 30.01
	9757.00	88.10	179.90	7008.12	3043.93	-2988.05	-860.66	1.34	1341925.94	3248813.30	N 40 16 6.79	W 104 36 30.03
	9846.00	88.30	178.90	7010.92	3132.57	-3077.00	-859.73	1.15	1341836.99	3248814.23	N 40 16 5.91	W 104 36 30.03
	9936.00	89.90	179.20	7012.33	3222.18	-3166.97	-858.24	1.81	1341747.02	3248815.72	N 40 16 5.02	W 104 36 30.02
	10025.00	90.00	178.70	7012.41	3310.79	-3255.95	-856.61	0.57	1341658.04	3248817.35	N 40 16 4.14	W 104 36 30.01
	10115.00	89.60	178.70	7012.72	3400.37	-3345.93	-854.56	0.44	1341568.07	3248819.39	N 40 16 3.25	W 104 36 30.00
	10205.00	90.20	179.70	7012.88	3490.01	-3435.92	-853.31	1.30	1341478.08	3248820.65	N 40 16 2.36	W 104 36 29.99
	10294.00	90.90	180.20	7012.02	3578.75	-3524.92	-853.23	0.97	1341389.09	3248820.73	N 40 16 1.48	W 104 36 30.01
	10384.00	90.80	179.40	7010.69	3668.47	-3614.90	-852.92	0.90	1341299.11	3248821.04	N 40 16 0.59	W 104 36 30.01
	10474.00	90.50	179.10	7009.67	3758.11	-3704.89	-851.74	0.47	1341209.13	3248822.22	N 40 15 59.70	W 104 36 30.01
	10563.00	91.00	179.70	7008.50	3846.78	-3793.88	-850.81	0.88	1341120.14	3248823.15	N 40 15 58.82	W 104 36 30.01
	10653.00	91.00	178.80	7006.93	3936.42	-3883.85	-849.63	1.00	1341030.17	3248824.33	N 40 15 57.93	W 104 36 30.01
	10743.00	90.30	178.20	7005.91	4025.96	-3973.82	-847.27	1.02	1340940.21	3248826.69	N 40 15 57.05	W 104 36 29.99
	10832.00	91.20	177.00	7004.75	4114.34	-4062.73	-843.55	1.69	1340851.30	3248830.41	N 40 15 56.17	W 104 36 29.95
	10922.00	91.50	177.00	7002.63	4203.59	-4152.58	-838.84	0.33	1340761.46	3248835.12	N 40 15 55.28	W 104 36 29.90
	11011.00	92.30	177.70	6999.67	4291.89	-4241.44	-834.72	1.19	1340672.61	3248839.23	N 40 15 54.40	W 104 36 29.86
	11101.00	92.40	179.30	6995.98	4381.36	-4331.33	-832.37	1.78	1340582.72	3248841.59	N 40 15 53.51	W 104 36 29.84
	11191.00	93.30	179.50	6991.51	4470.92	-4421.21	-831.43	1.02	1340492.84	3248842.53	N 40 15 52.62	W 104 36 29.84
	11280.00	90.80	179.80	6988.33	4559.57	-4510.14	-830.89	2.83	1340403.91	3248843.07	N 40 15 51.74	W 104 36 29.84
	11370.00	90.00	180.40	6987.70	4649.32	-4600.14	-831.04	1.11	1340313.92	3248842.91	N 40 15 50.85	W 104 36 29.86
	11460.00	89.50	179.50	6988.09	4739.06	-4690.14	-830.96	1.14	1340223.92	3248842.99	N 40 15 49.97	W 104 36 29.87
	11549.00	89.30	179.30	6989.02	4827.74	-4779.13	-830.03	0.32	1340134.94	3248843.93	N 40 15 49.09	W 104 36 29.87
	11639.00	89.30	179.70	6990.12	4917.42	-4869.12	-829.25	0.44	1340044.95	3248844.71	N 40 15 48.20	W 104 36 29.87
	11728.00	89.20	180.50	6991.29	5006.17	-4958.11	-829.40	0.91	1339955.96	3248844.56	N 40 15 47.32	W 104 36 29.88
	11818.00	91.30	181.60	6990.89	5096.02	-5048.09	-831.05	2.63	1339865.99	3248842.91	N 40 15 46.43	W 104 36 29.92
	11907.00	91.70	180.80	6988.56	5184.86	-5137.04	-832.91	1.00	1339777.05	3248841.04	N 40 15 45.55	W 104 36 29.95
Last Ensign Survey	11952.00	91.70	180.90	6987.23	5229.76	-5182.01	-833.58	0.22	1339732.07	3248840.38	N 40 15 45.11	W 104 36 29.97
Begin IFR Survey	12047.00	90.17	182.09	6985.68	5324.63	-5276.96	-836.06	2.04	1339637.13	3248837.90	N 40 15 44.17	W 104 36 30.01
	12136.00	90.38	183.06	6985.25	5413.59	-5365.87	-840.06	1.12	1339548.22	3248833.90	N 40 15 43.29	W 104 36 30.07
	12226.00	90.58	182.51	6984.50	5503.56	-5455.76	-844.43	0.65	1339458.34	3248829.53	N 40 15 42.40	W 104 36 30.14
	12316.00	90.45	181.34	6983.69	5593.48	-5545.70	-847.45	1.31	1339368.4			

Comments	MD (ft)	Incl (°)	Azim Grid (°)	TVD (ft)	VSEC (ft)	NS (ft)	EW (ft)	DLS ("/100ft)	Northing (ftUS)	Easting (ftUS)	Latitude (N/S ° ' ")	Longitude (E/W ° ' ")
	13391.00	90.76	179.17	6975.71	6662.44	-6620.00	-816.10	1.41	1338294.15	3248857.85	N 40 15 30.89 W	104 36 29.93
	13481.00	90.96	177.98	6974.35	6751.98	-6709.96	-813.86	1.34	1338204.19	3248860.09	N 40 15 30.01 W	104 36 29.91
	13570.00	90.65	178.71	6973.10	6840.49	-6798.91	-811.29	0.89	1338115.24	3248862.66	N 40 15 29.13 W	104 36 29.89
	13660.00	91.17	177.60	6971.67	6929.97	-6888.85	-808.40	1.36	1338025.31	3248865.56	N 40 15 28.24 W	104 36 29.86
	13750.00	91.24	178.95	6969.78	7019.45	-6978.79	-805.69	1.50	1337935.37	3248868.27	N 40 15 27.35 W	104 36 29.84
	13839.00	90.76	182.94	6968.23	7108.27	-7067.75	-807.16	4.51	1337846.42	3248866.80	N 40 15 26.47 W	104 36 29.87
	13929.00	91.03	181.70	6966.82	7198.20	-7157.66	-810.80	1.41	1337756.51	3248863.16	N 40 15 25.58 W	104 36 29.93
	14018.00	91.62	180.76	6964.76	7287.05	-7246.61	-812.71	1.25	1337667.56	3248861.25	N 40 15 24.70 W	104 36 29.97
	14108.00	91.58	180.89	6962.25	7376.86	-7336.57	-814.00	0.15	1337577.61	3248859.95	N 40 15 23.81 W	104 36 29.99
	14197.00	91.51	178.90	6959.85	7465.56	-7425.53	-813.84	2.24	1337488.65	3248860.12	N 40 15 22.93 W	104 36 30.00
	14287.00	90.89	180.40	6957.97	7555.24	-7515.51	-813.29	1.80	1337398.68	3248860.66	N 40 15 22.05 W	104 36 30.01
	14377.00	90.65	179.17	6956.76	7644.96	-7605.50	-812.95	1.39	1337308.69	3248861.00	N 40 15 21.16 W	104 36 30.01
	14421.00	91.03	178.80	6956.11	7688.76	-7649.49	-812.18	1.21	1337264.71	3248861.78	N 40 15 20.72 W	104 36 30.01
	14511.00	90.93	179.74	6954.57	7778.40	-7739.46	-811.03	1.05	1337174.73	3248862.93	N 40 15 19.83 W	104 36 30.01
	14601.00	90.93	178.64	6953.11	7868.04	-7829.44	-809.76	1.22	1337084.76	3248864.20	N 40 15 18.94 W	104 36 30.00
	14690.00	91.03	179.16	6951.59	7956.63	-7918.41	-808.05	0.59	1336995.79	3248865.91	N 40 15 18.06 W	104 36 29.99
	14780.00	91.10	179.20	6949.92	8046.26	-8008.39	-806.76	0.09	1336905.82	3248867.20	N 40 15 17.17 W	104 36 29.99
	14869.00	91.27	178.95	6948.08	8134.87	-8097.36	-805.32	0.34	1336816.86	3248868.63	N 40 15 16.30 W	104 36 29.98
	14959.00	90.93	179.55	6946.35	8224.51	-8187.33	-804.15	0.77	1336726.89	3248869.81	N 40 15 15.41 W	104 36 29.98
	15049.00	91.20	178.97	6944.68	8314.15	-8277.31	-802.98	0.71	1336636.91	3248870.97	N 40 15 14.52 W	104 36 29.97
	15138.00	90.96	180.70	6943.00	8402.86	-8366.29	-802.73	1.96	1336547.94	3248871.23	N 40 15 13.64 W	104 36 29.98
	15228.00	91.34	177.99	6941.19	8492.50	-8456.26	-801.70	3.04	1336457.97	3248872.26	N 40 15 12.75 W	104 36 29.98
	15318.00	91.00	178.86	6939.35	8582.01	-8546.20	-799.23	1.04	1336368.03	3248874.73	N 40 15 11.86 W	104 36 29.96
	15407.00	90.86	181.31	6937.91	8670.76	-8635.18	-799.36	2.76	1336279.05	3248874.60	N 40 15 10.98 W	104 36 29.97
	15497.00	90.52	180.01	6936.82	8760.57	-8725.17	-800.39	1.49	1336189.07	3248873.56	N 40 15 10.09 W	104 36 30.00
	15587.00	91.13	178.29	6935.53	8850.20	-8815.15	-799.06	2.03	1336099.10	3248874.90	N 40 15 9.20 W	104 36 29.99
	15676.00	90.83	182.38	6934.01	8938.95	-8904.11	-799.58	4.61	1336010.14	3248874.38	N 40 15 8.32 W	104 36 30.01
	15766.00	91.14	181.03	6932.46	9028.85	-8994.06	-802.26	1.54	1335920.20	3248871.70	N 40 15 7.43 W	104 36 30.06
	15855.00	90.86	180.18	6930.91	9117.65	-9083.04	-803.20	1.01	1335831.22	3248870.76	N 40 15 6.55 W	104 36 30.08
	15945.00	91.10	179.59	6929.37	9207.37	-9173.02	-803.02	0.71	1335741.24	3248870.94	N 40 15 5.67 W	104 36 30.09
	16035.00	90.93	178.15	6927.77	9296.95	-9262.99	-801.24	1.61	1335651.28	3248872.71	N 40 15 4.78 W	104 36 30.08
	16124.00	91.27	178.25	6926.06	9385.44	-9351.93	-798.45	0.40	1335562.34	3248875.51	N 40 15 3.90 W	104 36 30.05
	16214.00	90.76	179.54	6924.47	9475.02	-9441.90	-796.71	1.54	1335472.38	3248877.24	N 40 15 3.01 W	104 36 30.04
	16304.00	90.38	183.52	6923.57	9564.90	-9531.84	-799.11	4.44	1335382.44	3248874.84	N 40 15 2.12 W	104 36 30.09
	16393.00	90.65	180.13	6922.77	9653.80	-9620.78	-801.95	3.82	1335293.50	3248872.01	N 40 15 1.24 W	104 36 30.13
	16483.00	90.48	181.30	6921.89	9743.62	-9710.77	-803.07	1.31	1335203.52	3248870.88	N 40 15 0.35 W	104 36 30.16
	16573.00	90.41	179.10	6921.19	9833.38	-9800.76	-803.39	2.45	1335113.53	3248870.57	N 40 14 59.46 W	104 36 30.18
	16663.00	90.45	175.97	6920.51	9922.75	-9890.66	-799.52	3.48	1335023.63	3248874.44	N 40 14 58.57 W	104 36 30.14
	16752.00	90.03	176.99	6920.14	10010.92	-9979.49	-794.05	1.24	1334934.81	3248879.90	N 40 14 57.70 W	104 36 30.08
	16842.00	90.55	179.56	6919.68	10100.42	-10069.44	-791.34	2.91	1334844.86	3248882.61	N 40 14 56.81 W	104 36 30.06
	16931.00	90.48	178.19	6918.88	10189.02	-10158.42	-789.59	1.54	1334755.89	3248884.36	N 40 14 55.93 W	104 36 30.04
	17021.00	90.28	178.94	6918.29	10278.57	-10248.39	-787.34	0.86	1334665.92	3248886.61	N 40 14 55.04 W	104 36 30.03
	17110.00	90.31	181.89	6917.83	10367.35	-10337.37	-787.99	3.31	1334576.94	3248885.97	N 40 14 54.16 W	104 36 30.05
	17200.00	91.28	181.84	6916.58	10457.26	-10427.32	-790.91	1.08	1334487.00	3248883.04	N 40 14 53.27 W	104 36 30.10
	17289.00	90.48	183.60	6915.21	10546.22	-10516.20	-795.14	2.17	1334398.12	3248878.82	N 40 14 52.39 W	104 36 30.16
	17378.00	89.52	180.50	6915.21	10635.14	-10605.13	-798.32	3.65	1334309.19	3248875.64	N 40 14 51.51 W	104 36 30.22
Last IFR Survey	17475.00	89.38	180.16	6916.14	10731.90	-10702.13	-798.88	0.38	1334212.20	3248875.08	N 40 14 50.56 W	104 36 30.23
Projection to Bit	17522.00	89.38	180.16	6916.65	10778.78	-10749.12	-799.01	0.00	1334165.21	3248874.95	N 40 14 50.09 W	104 36 30.24

Survey Type: Def Survey

Survey Error Model: ISCWSA Rev 0 *** 3-D 95.000% Confidence 2.7955 sigma
Survey Program:

Description	Part	MD From (ft)	MD To (ft)	EOU Freq (ft)	Hole Size (in)	Casing Diameter (in)	Survey Tool Type	Borehole / Survey
Surface	1	0.000	16.000	Act Stns	13.750	9.625	SLB_EMS-STD-Depth Only	Original Hole / Heartland State H01-74-1HN MWD 0' to 11050'
Surface	1	16.000	727.000	1/98.425	13.750	9.625	SLB_EMS-STD	Original Hole / Heartland State H01-74-1HN MWD 0' to 11050'
Intermediate	1	727.000	7158.000	Act Stns	8.750	7.000	SLB_MWD-STD	Original Hole / Heartland State H01-74-1HN MWD 0' to 11050'
* Lateral	1	7158.000	17475.000	Act Stns	6.125	4.500	SLB_MWD+IFR+DMAG	ST1 / Heartland State H01-74-1HN ST1 7158' to 17522'
Bit Projection	1	17475.000	17522.000	Act Stns	6.125	4.500	SLB_BLIND+TREND	ST1 / Heartland State H01-74-1HN ST1 7158' to 17522'

* SLB_MWD+IFR+DMAG = MWD+IFR1+MS_WY