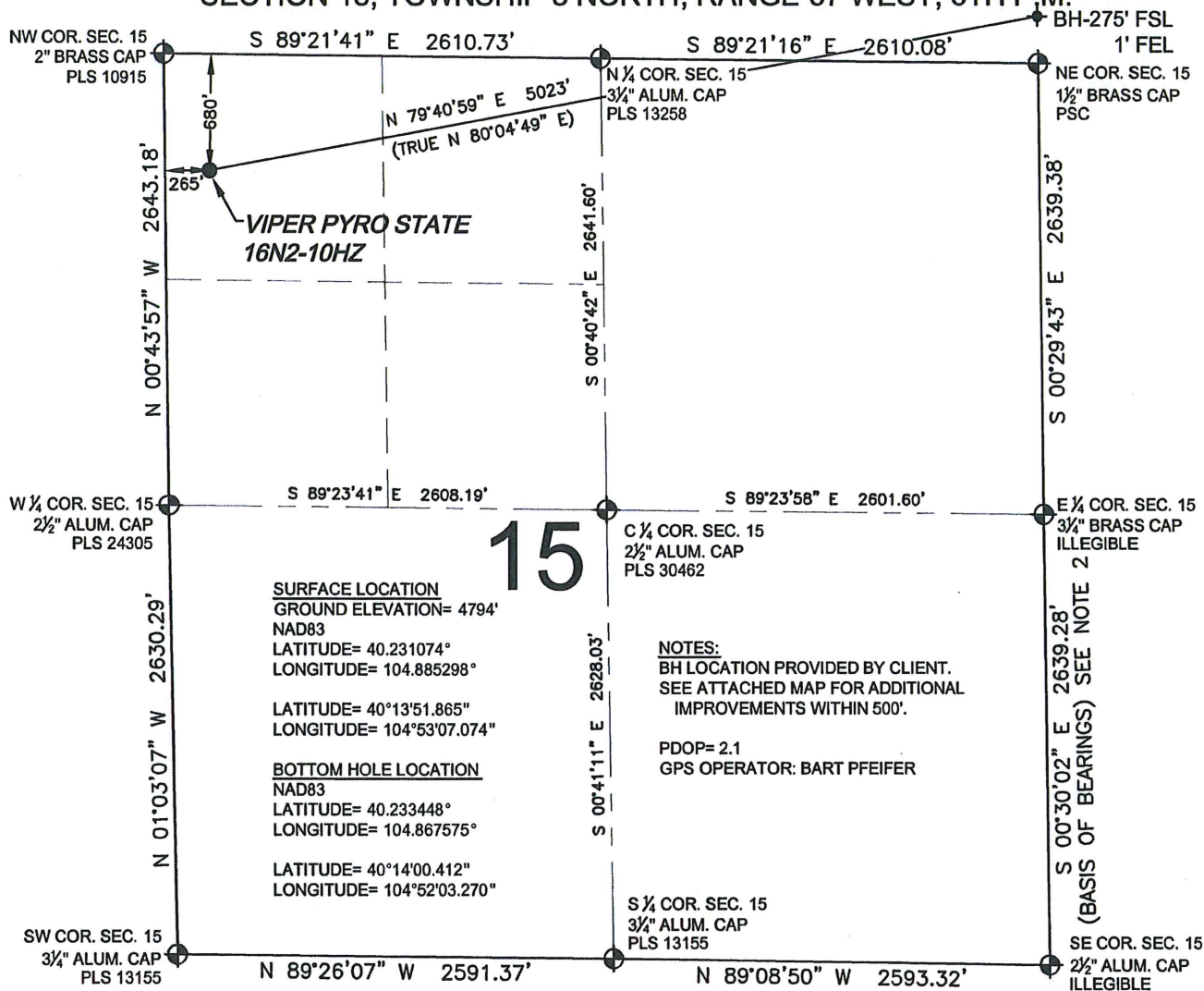


WELL LOCATION CERTIFICATE: VIPER PYRO STATE 16N2-10HZ

SECTION 15, TOWNSHIP 3 NORTH, RANGE 67 WEST, 6TH P.M.



WELL VIPER PYRO STATE 16N2-10HZ TO BE LOCATED 680' FNL AND 265' FWL

LEGEND

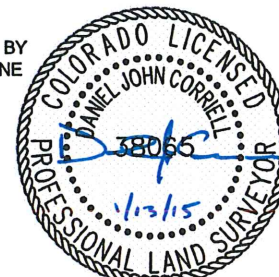
- = EXISTING MONUMENT
● = PROPOSED WELL
BH = BOTTOM HOLE
◆ = BOTTOM HOLE
◆ = EXISTING WELL
○ = CALCULATED POSITION

NOTES:

- THIS FIELD SURVEY CONFORMS TO THE MINIMUM STANDARDS SET BY THE C.O.G.C.C., RULE NO. 215
- BEARINGS AND DISTANCE SHOWN HEREON ARE GRID AND BASED ON THE COLORADO STATE PLANE COORDINATE SYSTEM, NAD 83/2011 BETWEEN MONUMENTS AS LABELED HEREON AND ELEVATIONS SHOWN ARE NAVD 88, AS DERIVED BY GPS OBSERVATIONS.
- GRID DISTANCES ARE SHOWN, AS MEASURED IN THE FIELD, WITH TIES TO WELLS MEASURED PERPENDICULAR TO SECTION LINES.
- ALL LINES SHOWN THAT ARE WITHOUT DIMENSION SHOULD BE CONSIDERED SCALED AND ONLY REPRESENT A GRAPHICAL DEPICTION OF THE APPROXIMATE LOCATION OF SAID LINE.

I, DANIEL JOHN CORRIELL, A LICENSED PROFESSIONAL LAND SURVEYOR IN THE STATE OF COLORADO DO HEREBY CERTIFY TO **KERR-MCGEE OIL & GAS ONSHORE LP**, THAT THE SURVEY AND WELL LOCATION CERTIFICATE SHOWN HEREON WERE DONE BY ME OR UNDER MY DIRECT SUPERVISION AND THAT THE DRAWING SHOWN HEREON ACCURATELY DEPICTS THE PROPOSED LOCATION OF THE WELL. THIS CERTIFICATE DOES NOT REPRESENT A LAND SURVEY PLAT OR IMPROVEMENT SURVEY PLAT AS DEFINED BY C.R.S. 38-51-102 AND CANNOT BE RELIED UPON TO DETERMINE OWNERSHIP.

DANIEL JOHN CORRIELL, PLS 38065
COLORADO LICENSED PROFESSIONAL LAND SURVEYOR
FOR AND ON BEHALF OF P.F.S., LLC



NOTICE: ACCORDING TO COLORADO LAW YOU MUST COMMENCE ANY LEGAL ACTION BASED UPON ANY DEFECT IN THIS SURVEY WITHIN THREE YEARS AFTER YOU FIRST DISCOVER SUCH DEFECT. IN NO EVENT MAY ANY ACTION BASED UPON ANY DEFECT IN THIS SURVEY BE COMMENCED MORE THAN TEN YEARS FROM THIS SAID DATE OF THIS CERTIFICATION SHOWN HEREON.

PREPARED BY:



FIELD DATE:

09-03-14

DRAWING DATE:

01-11-15

BY:

SMF

CHECKED:

ATK

SURFACE LOCATION:

NW 1/4 NW 1/4,

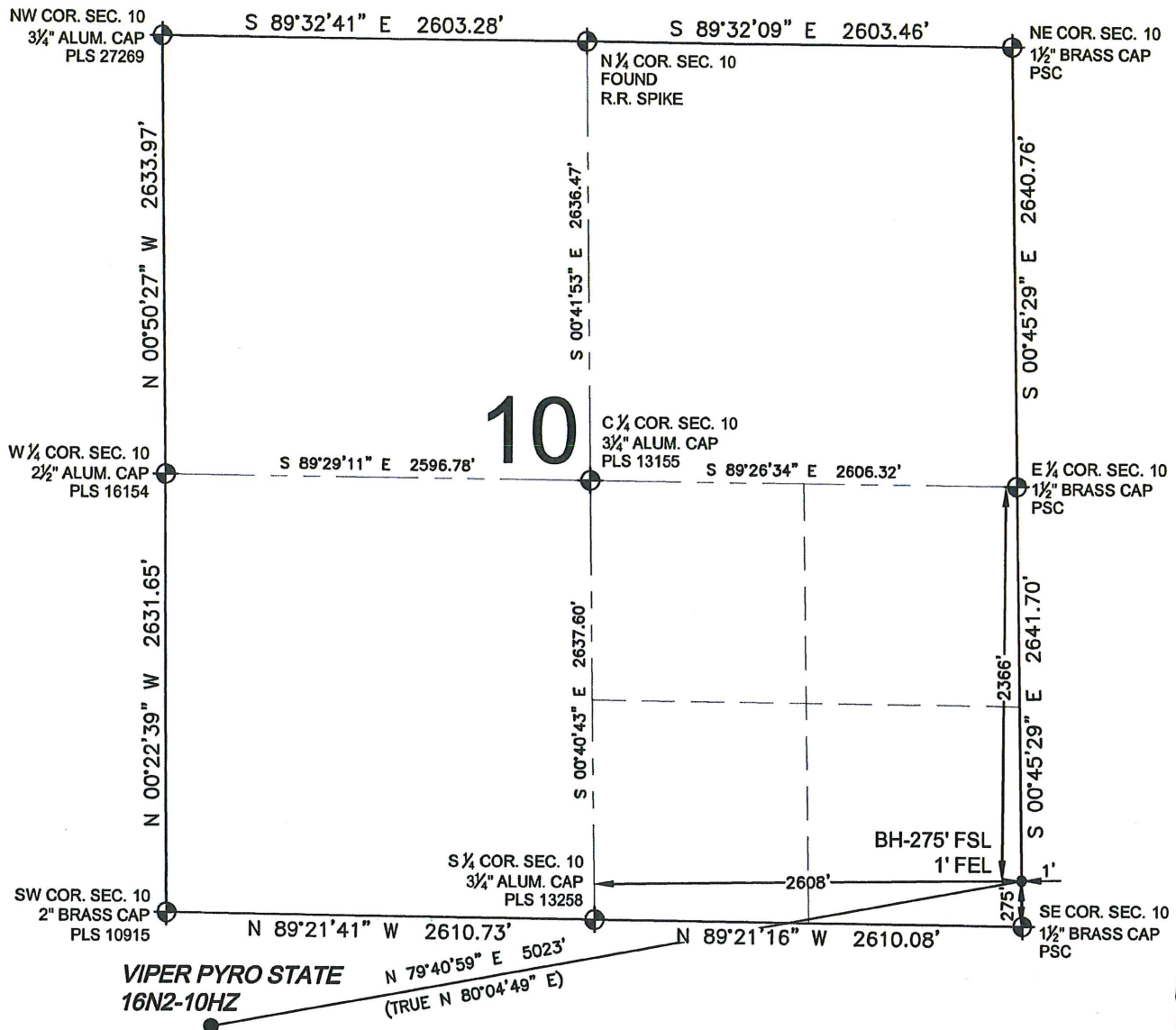
SEC. 15, T3N, R67W, 6TH P.M.

WELD COUNTY, COLORADO

SHEET 1 OF 2

WELL LOCATION CERTIFICATE: VIPER PYRO STATE 16N2-10HZ

SECTION 10, TOWNSHIP 3 NORTH, RANGE 67 WEST, 6TH P.M.

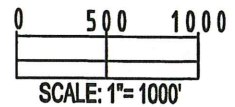


LEGEND

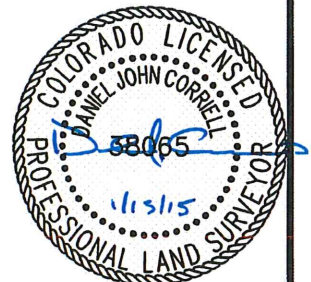
- ⊕ = EXISTING MONUMENT
- ⬮ = BOTTOM HOLE
- = PROPOSED WELL
- ⬮ = EXISTING WELL
- BH = BOTTOM HOLE
- = CALCULATED POSITION

NOTES:

1. THIS FIELD SURVEY CONFORMS TO THE MINIMUM STANDARDS SET BY THE C.O.G.C.C., RULE NO. 215
2. BEARINGS AND DISTANCE SHOWN HEREON ARE GRID AND BASED ON THE COLORADO STATE PLANE COORDINATE SYSTEM, NAD 83/2011 BETWEEN MONUMENTS AS LABELED HEREON AND ELEVATIONS SHOWN ARE NAVD 88, AS DERIVED BY GPS OBSERVATIONS.
3. GRID DISTANCES ARE SHOWN, AS MEASURED IN THE FIELD, WITH TIES TO WELLS MEASURED PERPENDICULAR TO SECTION LINES.
4. ALL LINES SHOWN THAT ARE WITHOUT DIMENSION SHOULD BE CONSIDERED SCALED AND ONLY REPRESENT A GRAPHICAL DEPICTION OF THE APPROXIMATE LOCATION OF SAID LINE.



DANIEL JOHN CORRIELL, PLS 38065
COLORADO LICENSED PROFESSIONAL LAND SURVEYOR
FOR AND ON BEHALF OF P.F.S., LLC



PREPARED BY:



FIELD DATE:
09-03-14

DRAWING DATE:
01-11-15

BY: SMF
CHECKED: ATK

SURFACE LOCATION:

NW 1/4 NW 1/4,
SEC. 15, T3N, R67W, 6TH P.M.
WELD COUNTY, COLORADO

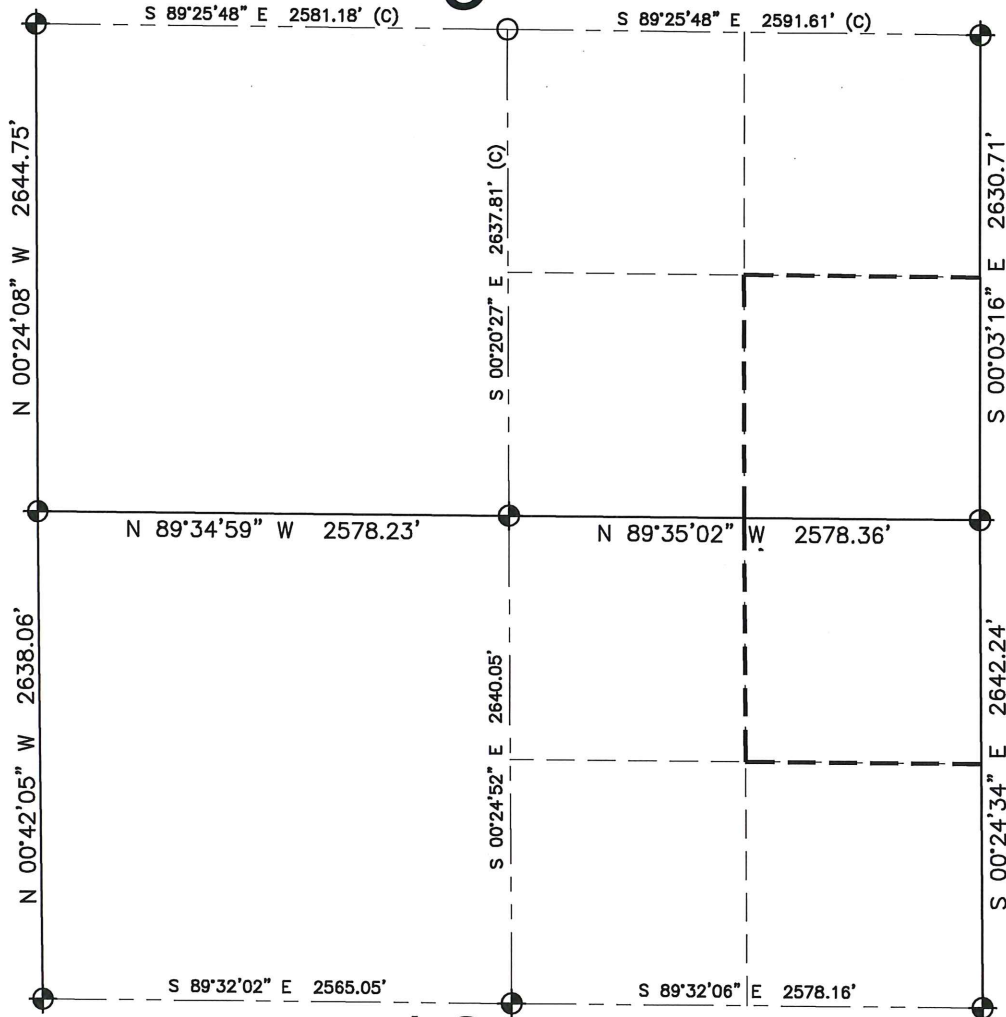
SHEET 2 OF 2

NOTICE: ACCORDING TO COLORADO LAW YOU MUST COMMENCE ANY LEGAL ACTION BASED UPON ANY DEFECT IN THIS SURVEY WITHIN THREE YEARS AFTER YOU FIRST DISCOVER SUCH DEFECT. IN NO EVENT MAY ANY ACTION BASED UPON ANY DEFECT IN THIS SURVEY BE COMMENCED MORE THAN TEN YEARS FROM THIS SAID DATE OF THIS CERTIFICATION SHOWN HEREON.

VIPER PYRO STATE 16N2-10HZ

SECTION 9, TOWNSHIP 3 NORTH, RANGE 67 WEST, 6TH P.M.

9



16

LEGEND

- ⊕ = EXISTING MONUMENT
- ⊙ = PROPOSED HEEL
- = CALCULATED POSITION
- ⊕ = BOTTOM HOLE
- BH = BOTTOM HOLE

NOTES:

- THIS DOCUMENT IS NOT A LAND SURVEY PLAT OR IMPROVEMENT SURVEY PLAT. THIS DOCUMENT DOES NOT REFLECT A FIELD SURVEY. SECTION BREAKDOWN, MONUMENTATION AND HORIZONTAL POSITIONS SHOWN ARE BASED ON THE HEEL AND BOTTOM HOLE LOCATION PROVIDED BY ANADARKO PETROLEUM CORPORATION

HEEL LOCATION

UTM 13
 LATITUDE= 40.233672°
 LONGITUDE= 104.885943°
 LATITUDE= 40°14'01.219"
 LONGITUDE= 104°53'09.393"

BOTTOM HOLE LOCATION

NAD83
 LATITUDE= 40.233448°
 LONGITUDE= 104.867575°
 LATITUDE= 40°14'00.412"
 LONGITUDE= 104°52'03.270"

QRT/QRT SECTIONS WITHIN PATH OF THE HARDLINE

SESE, SEC. 9
 NENE, SEC. 16

AVAILABLE FOOTAGE

6888'



0 500 1000

SCALE: 1"= 1000'

PREPARED BY:



DRAWING DATE: 01-11-15		HEEL LOCATION: SW 1/4 SW 1/4, SEC. 10, T3N, R67W, 6TH P.M. WELD COUNTY, COLORADO	
BY: SMF	CHECKED: ATK		