

BONANZA CREEK ENERGY INC.

WELD COUNTY, COLORADO (NAD 83)

SE SE SEC.32 T5N R61W 6th P.M.

STATE PRONGHORN 44-32-31MRLNB

ORIGINAL WELLBORE

18 December, 2014

Plan: PROPOSAL #1





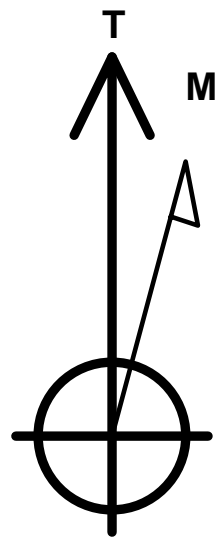
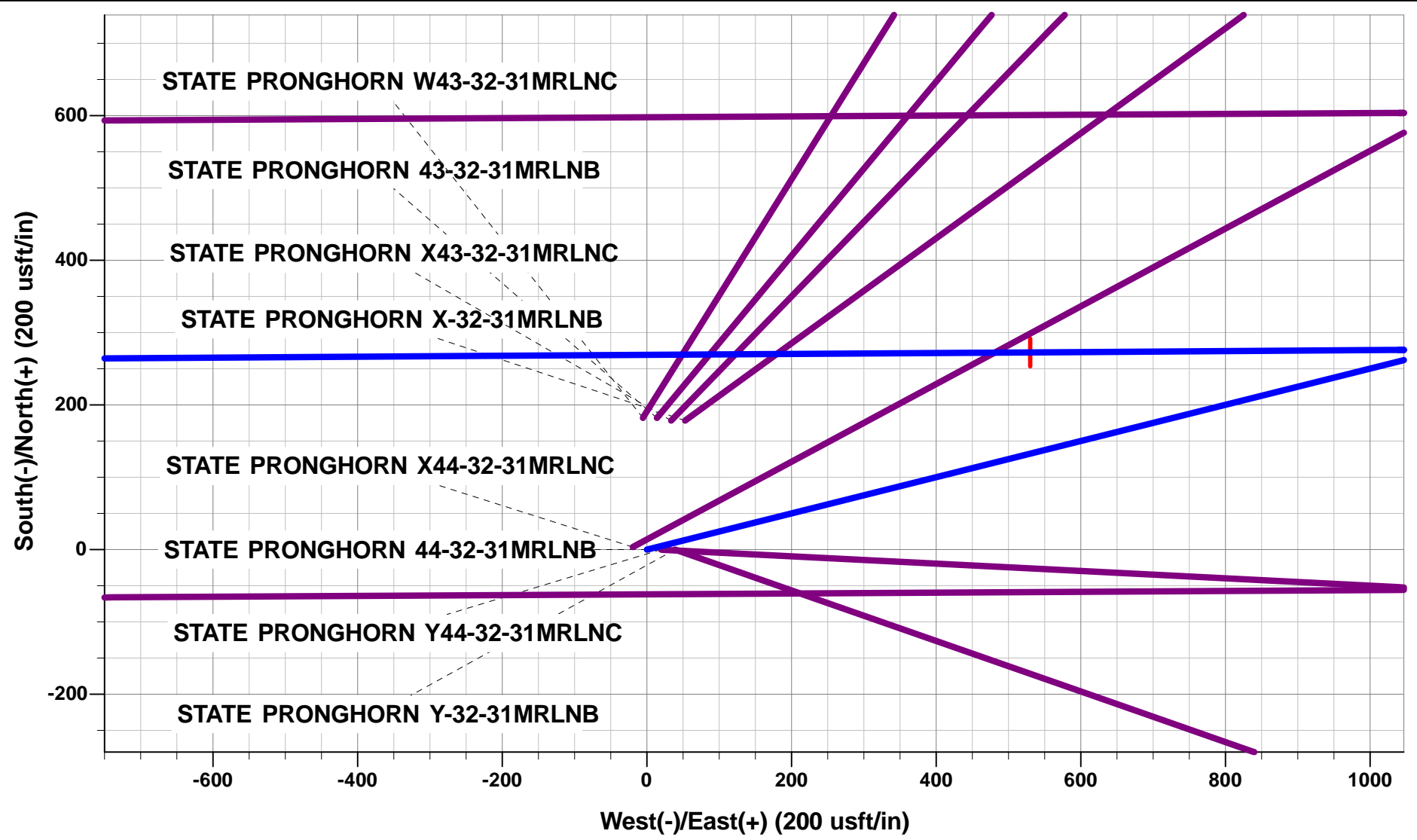
Project: WELD COUNTY, COLORADO (NAD 83)
Site: SE SE SEC.32 T5N R61W 6th P.M.
Well: STATE PRONGHORN 44-32-31MRLNB
Wellbore: ORIGINAL WELLBORE
Design: PROPOSAL #1

ANNOTATIONS

TVD	MD	Inc	Azi	+N/-S	+E/-W	VSec	Dep	Annotation
800.0	800.0	0.00	0.00	0.0	0.0	0.0	0.0	START NUDGE (2°/100ft BUR)
1596.8	1607.4	16.15	75.94	27.5	109.6	-108.2	113.0	EOB TO 16.15° INC
4747.2	4887.2	16.15	75.94	249.0	994.5	-981.4	1025.2	END OF TANGENT
5543.9	5694.6	0.00	0.00	276.5	1104.1	-1089.6	1138.2	EOD TO VERTICAL
5573.9	5724.6	0.00	0.00	276.5	1104.1	-1089.6	1138.2	KOP (12°/100ft BUR)
6035.1	6349.6	75.00	269.63	274.2	750.2	-736.3	1492.1	START OF TANGENT
6061.0	6449.6	75.00	269.63	273.6	653.6	-639.8	1588.7	END OF TANGENT
6077.2	6574.6	90.00	269.63	272.8	530.0	-516.4	1712.3	7" ICP *NEW* - STATE PRONGHORN 44-32-31MRLNB
6077.2	12068.8	90.00	269.63	237.3	-4964.0	4969.7	7206.4	BHL - STATE PRONGHORN 44-32-31MRLNB

WELLBORE TARGET DETAILS (LAT/LONG)

Name	TVD	+N/-S	+E/-W	Latitude	Longitude
KOP - STATE PRONGHORN 44-32-31MRLNB	5573.9	276.5	1104.1	40.351799	-104.223399
BHL - STATE PRONGHORN 44-32-31MRLNB	6077.2	237.3	-4964.0	40.351690	-104.245170
7" ICP *NEW* - STATE PRONGHORN 44-32-31MRLNB	6077.2	272.8	530.1	40.351789	-104.225458



Azimuths to True North
Magnetic North: 8.10°

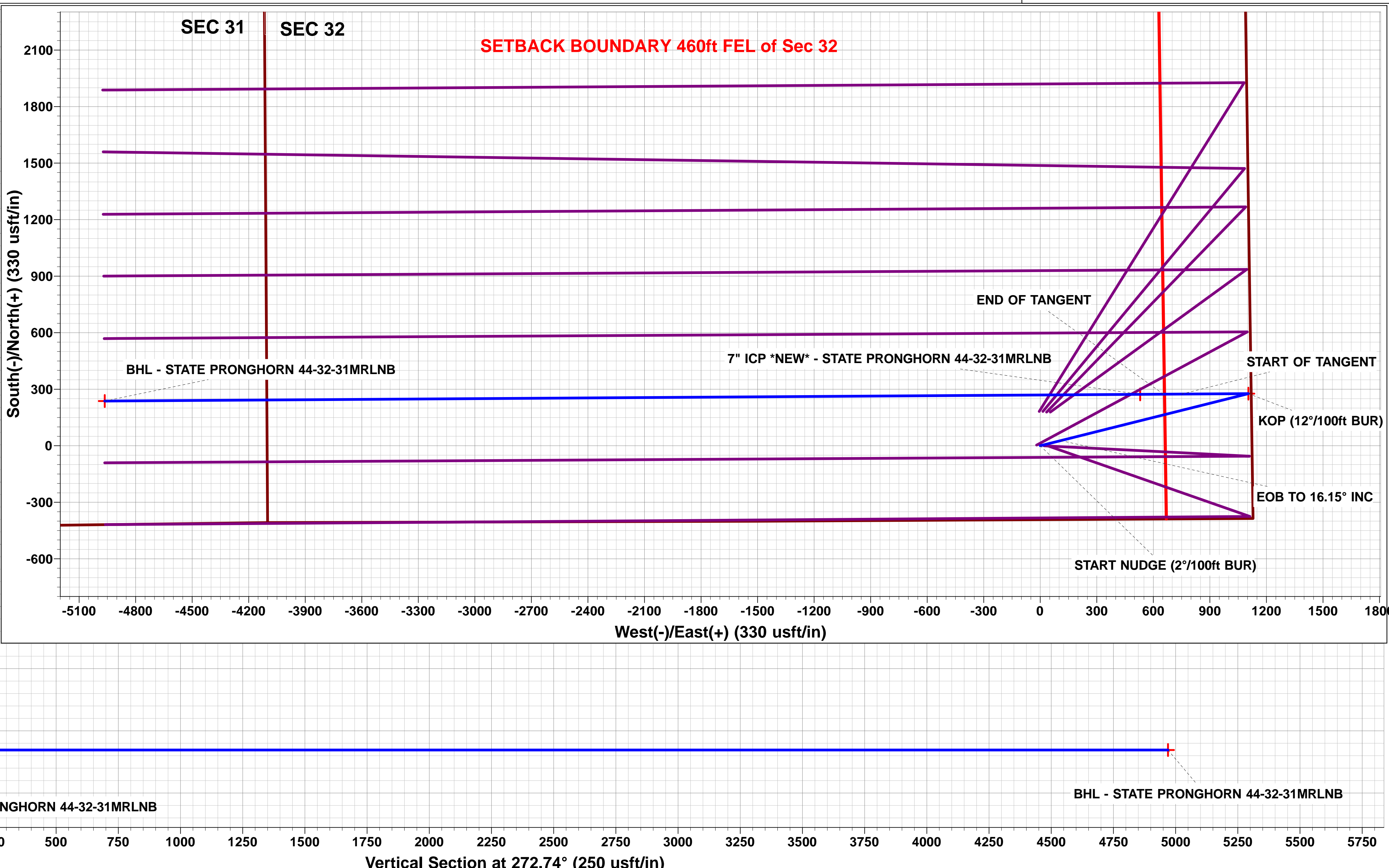
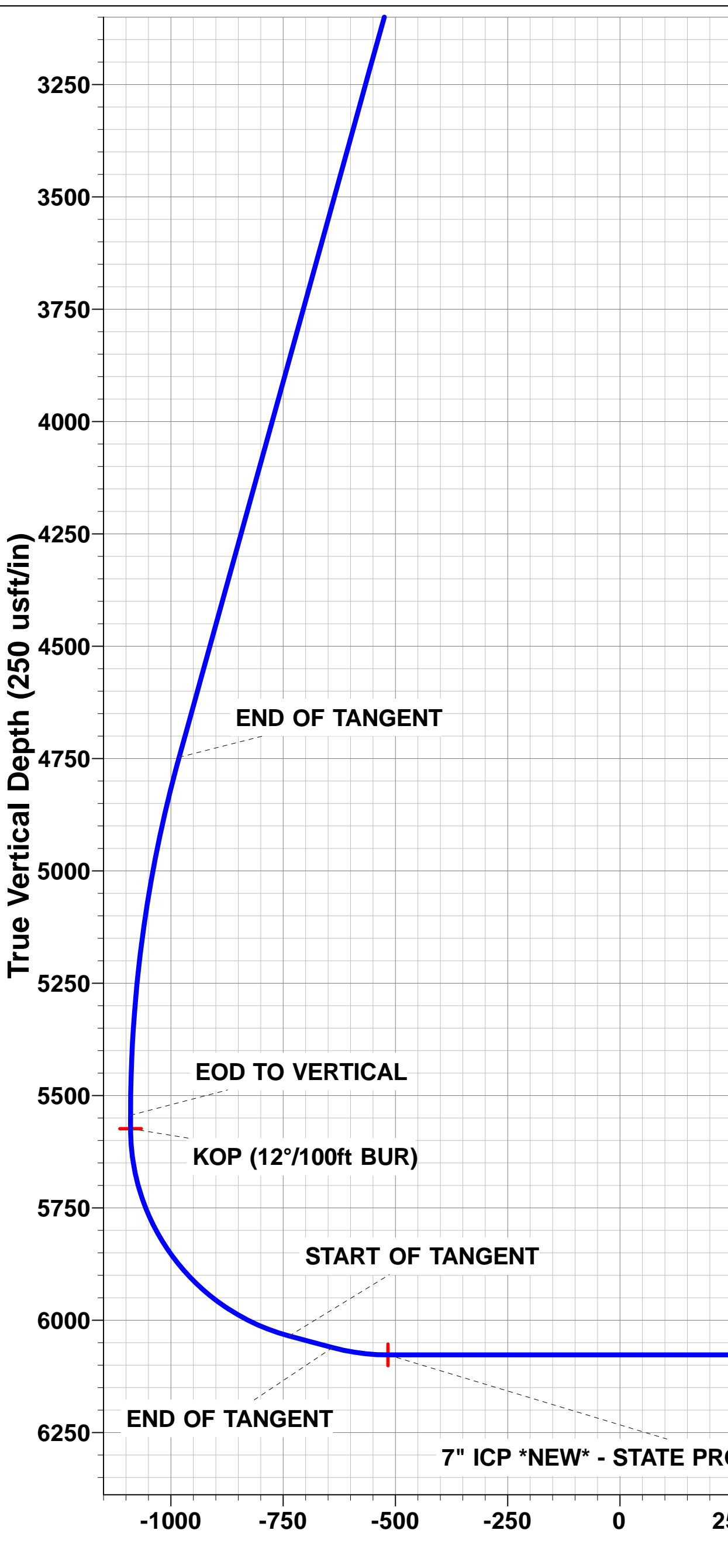
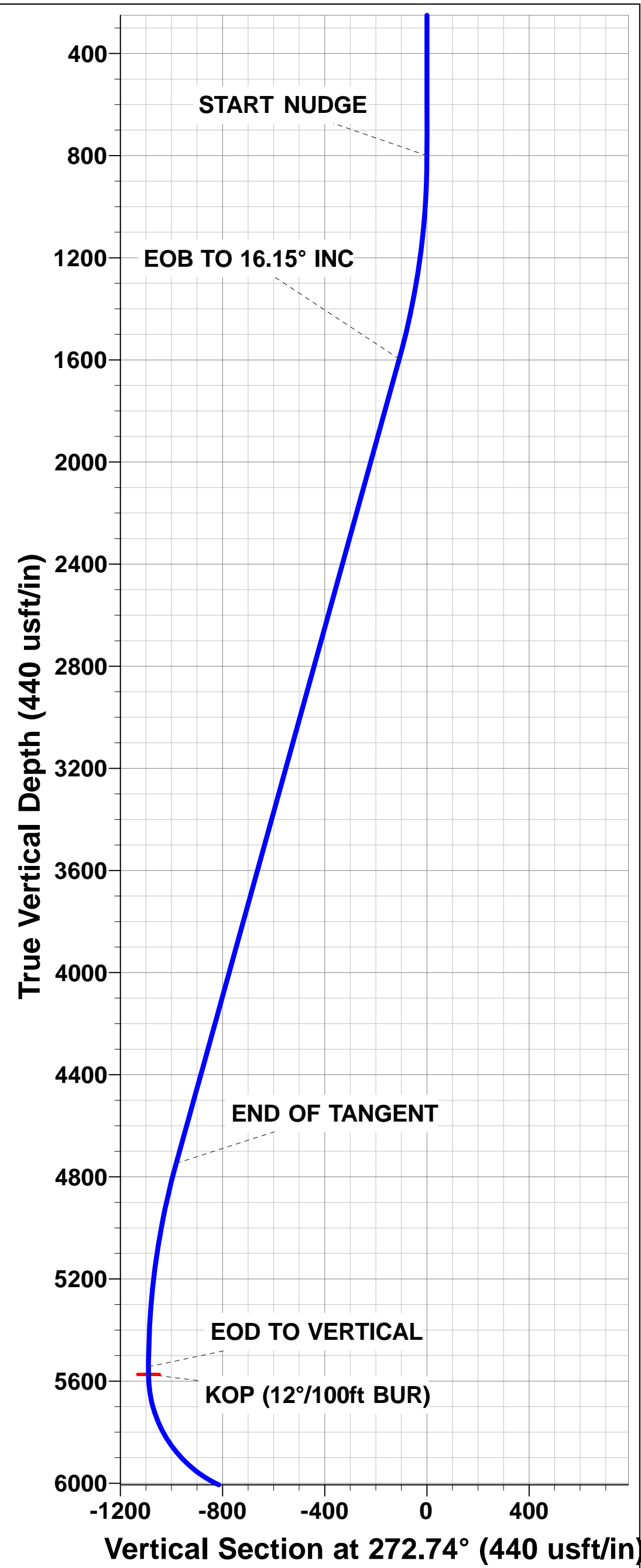
Magnetic Field
Strength: 52797.7snT
Dip Angle: 66.98°
Date: 03/12/2014
Model: IGRF2010

PROPOSED LOCAL COORDINATES

SHL: 392ft FSL & 1123ft FWL of Sec 32

7" ICP *NEW*: 660ft FSL & 589ft FWL of Sec 32

BHL: 660ft FSL & 860ft FEL of Sec 31



Planning Report



Database:	EDM 5000.1 Single User Db	Local Co-ordinate Reference:	Well STATE PRONGHORN 44-32-31MRLNB
Company:	BONANZA CREEK ENERGY INC.	TVD Reference:	KB-EST @ 4547.2usft
Project:	WELD COUNTY, COLORADO (NAD 83)	MD Reference:	KB-EST @ 4547.2usft
Site:	SE SE SEC.32 T5N R61W 6th P.M.	North Reference:	True
Well:	STATE PRONGHORN 44-32-31MRLNB	Survey Calculation Method:	Minimum Curvature
Wellbore:	ORIGINAL WELLBORE		
Design:	PROPOSAL #1		

Project	WELD COUNTY, COLORADO (NAD 83)		
Map System:	US State Plane 1983	System Datum:	Mean Sea Level
Geo Datum:	North American Datum 1983		
Map Zone:	Colorado Northern Zone		Using geodetic scale factor

Site	SE SE SEC.32 T5N R61W 6th P.M.				
Site Position:		Northing:	1,373,448.99 usft	Latitude:	40.351530
From:	Lat/Long	Easting:	3,354,737.61 usft	Longitude:	-104.227170
Position Uncertainty:	0.0 usft	Slot Radius:	1.10000ft	Grid Convergence:	0.82 °

Well	STATE PRONGHORN 44-32-31MRLNB					
Well Position	+N/-S	-178.5 usft	Northing:	1,373,269.74 usfi	Latitude:	40.351040
	+E/-W	-53.0 usft	Easting:	3,354,687.22 usfi	Longitude:	-104.227360
Position Uncertainty		0.0 usft	Wellhead Elevation:	usfi	Ground Level:	4,530.2 usft

Wellbore	ORIGINAL WELLBORE				
Magnetics	Model Name	Sample Date	Declination (°)	Dip Angle (°)	Field Strength (nT)
	IGRF2010	03/12/2014	8.10	66.98	52,798

Design	PROPOSAL #1			
Audit Notes:				
Version:	Phase:	PROTOTYPE	Tie On Depth:	0.0
Vertical Section:	Depth From (TVD) (usft)	+N/-S (usft)	+E/-W (usft)	Direction (°)
	0.8	0.0	0.0	272.74

Plan Sections											
MD (usft)	Inc (°)	Azi (°)	Vertical Depth	SS (usft)	+N/-S (usft)	+E/-W (usft)	Dogleg Rate (°/100usf)	Build Rate (°/100usf)	Turn Rate (°/100usf)	TFO (°)	Target
0.0	0.00	0.00	0.0	-4,547.2	0.0	0.0	0.00	0.00	0.00	0.00	
800.0	0.00	0.00	800.0	-3,747.2	0.0	0.0	0.00	0.00	0.00	0.00	
1,607.4	16.15	75.94	1,596.7	-2,950.5	27.5	109.6	2.00	2.00	0.00	75.94	
4,887.2	16.15	75.94	4,747.2	200.0	249.0	994.5	0.00	0.00	0.00	0.00	
5,694.6	0.00	0.00	5,543.9	996.7	276.5	1,104.1	2.00	-2.00	0.00	180.00	
5,724.6	0.00	0.00	5,573.9	1,026.7	276.5	1,104.1	0.00	0.00	0.00	0.00	KOP - STATE PRO
6,349.6	75.00	269.63	6,035.1	1,487.9	274.2	750.2	12.00	12.00	0.00	269.63	
6,449.6	75.00	269.63	6,061.0	1,513.8	273.6	653.6	0.00	0.00	0.00	0.00	
6,574.6	90.00	269.63	6,077.2	1,530.0	272.8	530.1	12.00	12.00	0.00	0.00	
12,068.8	90.00	269.63	6,077.2	1,530.0	237.3	-4,964.0	0.00	0.00	0.00	0.00	BHL - STATE PROI

Planning Report



Database:	EDM 5000.1 Single User Db	Local Co-ordinate Reference:	Well STATE PRONGHORN 44-32-31MRLNB
Company:	BONANZA CREEK ENERGY INC.	TVD Reference:	KB-EST @ 4547.2usft
Project:	WELD COUNTY, COLORADO (NAD 83)	MD Reference:	KB-EST @ 4547.2usft
Site:	SE SE SEC.32 T5N R61W 6th P.M.	North Reference:	True
Well:	STATE PRONGHORN 44-32-31MRLNB	Survey Calculation Method:	Minimum Curvature
Wellbore:	ORIGINAL WELLBORE		
Design:	PROPOSAL #1		

Planned Survey

MD (usft)	Inc (°)	Azi (°)	TVD (usft)	SS (usft)	+N/-S (usft)	+E/-W (usft)	Vertical Section (usft)	Dogleg Rate (°/100usft)	Build Rate (°/100usft)	Turn Rate (°/100usft)
0.0	0.00	0.00	0.0	4,547.20	0.0	0.0	0.0	0.00	0.00	0.00
100.0	0.00	0.00	100.0	4,447.20	0.0	0.0	0.0	0.00	0.00	0.00
200.0	0.00	0.00	200.0	4,347.20	0.0	0.0	0.0	0.00	0.00	0.00
300.0	0.00	0.00	300.0	4,247.20	0.0	0.0	0.0	0.00	0.00	0.00
400.0	0.00	0.00	400.0	4,147.20	0.0	0.0	0.0	0.00	0.00	0.00
500.0	0.00	0.00	500.0	4,047.20	0.0	0.0	0.0	0.00	0.00	0.00
600.0	0.00	0.00	600.0	3,947.20	0.0	0.0	0.0	0.00	0.00	0.00
700.0	0.00	0.00	700.0	3,847.20	0.0	0.0	0.0	0.00	0.00	0.00
START NUDGE (2°/100ft BUR)										
800.0	0.00	0.00	800.0	3,747.20	0.0	0.0	0.0	0.00	0.00	0.00
900.0	2.00	75.94	900.0	3,647.22	0.4	1.7	-1.7	2.00	2.00	0.00
1,000.0	4.00	75.94	999.8	3,547.36	1.7	6.8	-6.7	2.00	2.00	0.00
1,100.0	6.00	75.94	1,099.5	3,447.75	3.8	15.2	-15.0	2.00	2.00	0.00
1,200.0	8.00	75.94	1,198.7	3,348.50	6.8	27.0	-26.7	2.00	2.00	0.00
1,300.0	10.00	75.94	1,297.5	3,249.73	10.6	42.2	-41.7	2.00	2.00	0.00
1,400.0	12.00	75.94	1,395.6	3,151.58	15.2	60.7	-59.9	2.00	2.00	0.00
1,500.0	14.00	75.94	1,493.1	3,054.14	20.7	82.5	-81.5	2.00	2.00	0.00
1,600.0	16.00	75.94	1,589.6	2,957.56	27.0	107.7	-106.2	2.00	2.00	0.00
EOB TO 16.15° INC										
1,607.4	16.15	75.94	1,596.8	2,950.45	27.5	109.6	-108.2	1.99	1.99	0.00
1,700.0	16.15	75.94	1,685.7	2,861.50	33.7	134.6	-132.9	0.00	0.00	0.00
1,800.0	16.15	75.94	1,781.8	2,765.44	40.5	161.6	-159.5	0.00	0.00	0.00
1,900.0	16.15	75.94	1,877.8	2,669.39	47.2	188.6	-186.1	0.00	0.00	0.00
2,000.0	16.15	75.94	1,973.9	2,573.33	54.0	215.6	-212.7	0.00	0.00	0.00
2,100.0	16.15	75.94	2,069.9	2,477.28	60.7	242.5	-239.4	0.00	0.00	0.00
2,200.0	16.15	75.94	2,166.0	2,381.23	67.5	269.5	-266.0	0.00	0.00	0.00
2,300.0	16.15	75.94	2,262.0	2,285.17	74.2	296.5	-292.6	0.00	0.00	0.00
2,400.0	16.15	75.94	2,358.1	2,189.12	81.0	323.5	-319.2	0.00	0.00	0.00
2,500.0	16.15	75.94	2,454.1	2,093.06	87.8	350.4	-345.9	0.00	0.00	0.00
2,600.0	16.15	75.94	2,550.2	1,997.01	94.5	377.4	-372.5	0.00	0.00	0.00
2,700.0	16.15	75.94	2,646.2	1,900.95	101.3	404.4	-399.1	0.00	0.00	0.00
2,800.0	16.15	75.94	2,742.3	1,804.90	108.0	431.4	-425.7	0.00	0.00	0.00
2,900.0	16.15	75.94	2,838.4	1,708.84	114.8	458.4	-452.4	0.00	0.00	0.00
3,000.0	16.15	75.94	2,934.4	1,612.79	121.5	485.3	-479.0	0.00	0.00	0.00
3,100.0	16.15	75.94	3,030.5	1,516.73	128.3	512.3	-505.6	0.00	0.00	0.00
3,200.0	16.15	75.94	3,126.5	1,420.68	135.1	539.3	-532.2	0.00	0.00	0.00
3,300.0	16.15	75.94	3,222.6	1,324.62	141.8	566.3	-558.9	0.00	0.00	0.00
3,400.0	16.15	75.94	3,318.6	1,228.57	148.6	593.2	-585.5	0.00	0.00	0.00
3,500.0	16.15	75.94	3,414.7	1,132.51	155.3	620.2	-612.1	0.00	0.00	0.00
3,600.0	16.15	75.94	3,510.7	1,036.46	162.1	647.2	-638.7	0.00	0.00	0.00
3,700.0	16.15	75.94	3,606.8	940.40	168.8	674.2	-665.4	0.00	0.00	0.00
3,800.0	16.15	75.94	3,702.9	844.35	175.6	701.2	-692.0	0.00	0.00	0.00
3,900.0	16.15	75.94	3,798.9	748.29	182.3	728.1	-718.6	0.00	0.00	0.00
4,000.0	16.15	75.94	3,895.0	652.24	189.1	755.1	-745.2	0.00	0.00	0.00
4,100.0	16.15	75.94	3,991.0	556.18	195.9	782.1	-771.8	0.00	0.00	0.00
4,200.0	16.15	75.94	4,087.1	460.13	202.6	809.1	-798.5	0.00	0.00	0.00
4,300.0	16.15	75.94	4,183.1	364.07	209.4	836.0	-825.1	0.00	0.00	0.00
4,400.0	16.15	75.94	4,279.2	268.02	216.1	863.0	-851.7	0.00	0.00	0.00
4,500.0	16.15	75.94	4,375.2	171.96	222.9	890.0	-878.3	0.00	0.00	0.00
4,600.0	16.15	75.94	4,471.3	75.91	229.6	917.0	-905.0	0.00	0.00	0.00
4,700.0	16.15	75.94	4,567.3	-20.15	236.4	944.0	-931.6	0.00	0.00	0.00
4,800.0	16.15	75.94	4,663.4	-116.20	243.2	970.9	-958.2	0.00	0.00	0.00

END OF TANGENT

Planning Report



Database:	EDM 5000.1 Single User Db	Local Co-ordinate Reference:	Well STATE PRONGHORN 44-32-31MRLNB
Company:	BONANZA CREEK ENERGY INC.	TVD Reference:	KB-EST @ 4547.2usft
Project:	WELD COUNTY, COLORADO (NAD 83)	MD Reference:	KB-EST @ 4547.2usft
Site:	SE SE SEC.32 T5N R61W 6th P.M.	North Reference:	True
Well:	STATE PRONGHORN 44-32-31MRLNB	Survey Calculation Method:	Minimum Curvature
Wellbore:	ORIGINAL WELLBORE		
Design:	PROPOSAL #1		

Planned Survey

MD (usft)	Inc (°)	Azi (°)	TVD (usft)	SS (usft)	+N/-S (usft)	+E/-W (usft)	Vertical Section (usft)	Dogleg Rate (°/100usft)	Build Rate (°/100usft)	Turn Rate (°/100usft)
4,887.2	16.15	75.94	4,747.2	-199.96	249.0	994.5	-981.4	0.00	0.00	0.00
4,900.0	15.89	75.94	4,759.5	-212.27	249.9	997.9	-984.8	2.00	-2.00	0.00
5,000.0	13.89	75.94	4,856.1	-308.90	256.1	1,022.8	-1,009.4	2.00	-2.00	0.00
5,100.0	11.89	75.94	4,953.6	-406.38	261.6	1,044.5	-1,030.8	2.00	-2.00	0.00
5,200.0	9.89	75.94	5,051.8	-504.57	266.2	1,062.8	-1,048.9	2.00	-2.00	0.00
5,300.0	7.89	75.94	5,150.6	-603.36	269.9	1,077.8	-1,063.7	2.00	-2.00	0.00
5,400.0	5.89	75.94	5,249.8	-702.64	272.8	1,089.4	-1,075.2	2.00	-2.00	0.00
5,500.0	3.89	75.94	5,349.5	-802.27	274.9	1,097.7	-1,083.3	2.00	-2.00	0.00
5,600.0	1.89	75.94	5,449.3	-902.13	276.1	1,102.6	-1,088.1	2.00	-2.00	0.00
EOD TO VERTICAL										
5,694.6	0.00	0.00	5,543.9	-996.72	276.5	1,104.1	-1,089.6	2.00	-2.00	0.00
5,700.0	0.00	0.00	5,549.3	-1,002.12	276.5	1,104.1	-1,089.6	0.00	0.00	0.00
KOP (12°/100ft BUR)										
5,724.6	0.00	0.00	5,573.9	-1,026.72	276.5	1,104.1	-1,089.6	0.00	0.00	0.00
5,800.0	9.05	269.63	5,649.0	-1,101.80	276.5	1,098.2	-1,083.7	12.00	12.00	0.00
5,900.0	21.05	269.63	5,745.4	-1,198.20	276.3	1,072.2	-1,057.8	12.00	12.00	0.00
6,000.0	33.05	269.63	5,834.3	-1,287.09	276.0	1,026.8	-1,012.5	12.00	12.00	0.00
6,100.0	45.05	269.63	5,911.8	-1,364.61	275.6	964.0	-949.7	12.00	12.00	0.00
6,200.0	57.05	269.63	5,974.6	-1,427.36	275.1	886.3	-872.2	12.00	12.00	0.00
6,300.0	69.05	269.63	6,019.8	-1,472.60	274.5	797.4	-783.3	12.00	12.00	0.00
START OF TANGENT										
6,349.6	75.00	269.63	6,035.1	-1,487.90	274.2	750.2	-736.3	12.00	12.00	0.00
6,400.0	75.00	269.63	6,048.1	-1,500.94	273.9	701.5	-687.6	0.00	0.00	0.00
END OF TANGENT										
6,449.6	75.00	269.63	6,061.0	-1,513.78	273.6	653.6	-639.8	0.00	0.00	0.00
6,500.0	81.05	269.63	6,071.4	-1,524.23	273.3	604.3	-590.6	12.00	12.00	0.00
7" ICP *NEW* - STATE PRONGHORN 44-32-31MRLNB										
6,574.6	90.00	269.63	6,077.2	-1,530.05	272.8	530.0	-516.4	12.00	12.00	0.00
6,600.0	90.00	269.63	6,077.2	-1,530.05	272.6	504.6	-491.0	0.00	0.00	0.00
6,700.0	90.00	269.63	6,077.2	-1,530.05	272.0	404.6	-391.2	0.00	0.00	0.00
6,800.0	90.00	269.63	6,077.2	-1,530.05	271.3	304.6	-291.3	0.00	0.00	0.00
6,900.0	90.00	269.63	6,077.2	-1,530.05	270.7	204.6	-191.5	0.00	0.00	0.00
7,000.0	90.00	269.63	6,077.2	-1,530.05	270.0	104.6	-91.6	0.00	0.00	0.00
7,100.0	90.00	269.63	6,077.2	-1,530.05	269.4	4.6	8.2	0.00	0.00	0.00
7,200.0	90.00	269.63	6,077.2	-1,530.05	268.8	-95.3	108.1	0.00	0.00	0.00
7,300.0	90.00	269.63	6,077.2	-1,530.05	268.1	-195.3	207.9	0.00	0.00	0.00
7,400.0	90.00	269.63	6,077.2	-1,530.05	267.5	-295.3	307.8	0.00	0.00	0.00
7,500.0	90.00	269.63	6,077.2	-1,530.05	266.8	-395.3	407.6	0.00	0.00	0.00
7,600.0	90.00	269.63	6,077.2	-1,530.05	266.2	-495.3	507.5	0.00	0.00	0.00
7,700.0	90.00	269.63	6,077.2	-1,530.05	265.5	-595.3	607.3	0.00	0.00	0.00
7,800.0	90.00	269.63	6,077.2	-1,530.05	264.9	-695.3	707.2	0.00	0.00	0.00
7,900.0	90.00	269.63	6,077.2	-1,530.05	264.2	-795.3	807.0	0.00	0.00	0.00
8,000.0	90.00	269.63	6,077.2	-1,530.05	263.6	-895.3	906.9	0.00	0.00	0.00
8,100.0	90.00	269.63	6,077.2	-1,530.05	262.9	-995.3	1,006.8	0.00	0.00	0.00
8,200.0	90.00	269.63	6,077.2	-1,530.05	262.3	-1,095.3	1,106.6	0.00	0.00	0.00
8,300.0	90.00	269.63	6,077.2	-1,530.05	261.7	-1,195.3	1,206.5	0.00	0.00	0.00
8,400.0	90.00	269.63	6,077.2	-1,530.05	261.0	-1,295.3	1,306.3	0.00	0.00	0.00
8,500.0	90.00	269.63	6,077.2	-1,530.05	260.4	-1,395.3	1,406.2	0.00	0.00	0.00
8,600.0	90.00	269.63	6,077.2	-1,530.05	259.7	-1,495.3	1,506.0	0.00	0.00	0.00
8,700.0	90.00	269.63	6,077.2	-1,530.05	259.1	-1,595.3	1,605.9	0.00	0.00	0.00
8,800.0	90.00	269.63	6,077.2	-1,530.05	258.4	-1,695.3	1,705.7	0.00	0.00	0.00
8,900.0	90.00	269.63	6,077.2	-1,530.05	257.8	-1,795.3	1,805.6	0.00	0.00	0.00
9,000.0	90.00	269.63	6,077.2	-1,530.05	257.1	-1,895.3	1,905.4	0.00	0.00	0.00
9,100.0	90.00	269.63	6,077.2	-1,530.05	256.5	-1,995.3	2,005.3	0.00	0.00	0.00

Planning Report



Database:	EDM 5000.1 Single User Db	Local Co-ordinate Reference:	Well STATE PRONGHORN 44-32-31MRLNB
Company:	BONANZA CREEK ENERGY INC.	TVD Reference:	KB-EST @ 4547.2usft
Project:	WELD COUNTY, COLORADO (NAD 83)	MD Reference:	KB-EST @ 4547.2usft
Site:	SE SE SEC.32 T5N R61W 6th P.M.	North Reference:	True
Well:	STATE PRONGHORN 44-32-31MRLNB	Survey Calculation Method:	Minimum Curvature
Wellbore:	ORIGINAL WELLBORE		
Design:	PROPOSAL #1		

Planned Survey

MD (usft)	Inc (°)	Azi (°)	TVD (usft)	SS (usft)	+N/-S (usft)	+E/-W (usft)	Vertical Section (usft)	Dogleg Rate (°/100usft)	Build Rate (°/100usft)	Turn Rate (°/100usft)
9,200.0	90.00	269.63	6,077.2	-1,530.05	255.8	-2,095.3	2,105.1	0.00	0.00	0.00
9,300.0	90.00	269.63	6,077.2	-1,530.05	255.2	-2,195.3	2,205.0	0.00	0.00	0.00
9,400.0	90.00	269.63	6,077.2	-1,530.05	254.5	-2,295.3	2,304.8	0.00	0.00	0.00
9,500.0	90.00	269.63	6,077.2	-1,530.05	253.9	-2,395.3	2,404.7	0.00	0.00	0.00
9,600.0	90.00	269.63	6,077.2	-1,530.05	253.3	-2,495.3	2,504.5	0.00	0.00	0.00
9,700.0	90.00	269.63	6,077.2	-1,530.05	252.6	-2,595.3	2,604.4	0.00	0.00	0.00
9,800.0	90.00	269.63	6,077.2	-1,530.05	252.0	-2,695.3	2,704.3	0.00	0.00	0.00
9,900.0	90.00	269.63	6,077.2	-1,530.05	251.3	-2,795.3	2,804.1	0.00	0.00	0.00
10,000.0	90.00	269.63	6,077.2	-1,530.05	250.7	-2,895.3	2,904.0	0.00	0.00	0.00
10,100.0	90.00	269.63	6,077.2	-1,530.05	250.0	-2,995.3	3,003.8	0.00	0.00	0.00
10,200.0	90.00	269.63	6,077.2	-1,530.05	249.4	-3,095.3	3,103.7	0.00	0.00	0.00
10,300.0	90.00	269.63	6,077.2	-1,530.05	248.7	-3,195.3	3,203.5	0.00	0.00	0.00
10,400.0	90.00	269.63	6,077.2	-1,530.05	248.1	-3,295.3	3,303.4	0.00	0.00	0.00
10,500.0	90.00	269.63	6,077.2	-1,530.05	247.4	-3,395.3	3,403.2	0.00	0.00	0.00
10,600.0	90.00	269.63	6,077.2	-1,530.05	246.8	-3,495.3	3,503.1	0.00	0.00	0.00
10,700.0	90.00	269.63	6,077.2	-1,530.05	246.2	-3,595.3	3,602.9	0.00	0.00	0.00
10,800.0	90.00	269.63	6,077.2	-1,530.05	245.5	-3,695.3	3,702.8	0.00	0.00	0.00
10,900.0	90.00	269.63	6,077.2	-1,530.05	244.9	-3,795.3	3,802.6	0.00	0.00	0.00
11,000.0	90.00	269.63	6,077.2	-1,530.05	244.2	-3,895.3	3,902.5	0.00	0.00	0.00
11,100.0	90.00	269.63	6,077.2	-1,530.05	243.6	-3,995.3	4,002.3	0.00	0.00	0.00
11,200.0	90.00	269.63	6,077.2	-1,530.05	242.9	-4,095.3	4,102.2	0.00	0.00	0.00
11,300.0	90.00	269.63	6,077.2	-1,530.05	242.3	-4,195.3	4,202.0	0.00	0.00	0.00
11,400.0	90.00	269.63	6,077.2	-1,530.05	241.6	-4,295.3	4,301.9	0.00	0.00	0.00
11,500.0	90.00	269.63	6,077.2	-1,530.05	241.0	-4,395.3	4,401.8	0.00	0.00	0.00
11,600.0	90.00	269.63	6,077.2	-1,530.05	240.3	-4,495.3	4,501.6	0.00	0.00	0.00
11,700.0	90.00	269.63	6,077.2	-1,530.05	239.7	-4,595.3	4,601.5	0.00	0.00	0.00
11,800.0	90.00	269.63	6,077.2	-1,530.05	239.0	-4,695.3	4,701.3	0.00	0.00	0.00
11,900.0	90.00	269.63	6,077.2	-1,530.05	238.4	-4,795.3	4,801.2	0.00	0.00	0.00
12,000.0	90.00	269.63	6,077.2	-1,530.05	237.8	-4,895.2	4,901.0	0.00	0.00	0.00
BHL - STATE PRONGHORN 44-32-31MRLNB										
12,068.8	90.00	269.63	6,077.2	-1,530.00	237.3	-4,964.0	4,969.7	0.00	0.00	0.00

Plan Annotations

MD (usft)	TVD (usft)	Local Coordinates		Comment
		+N/-S (usft)	+E/-W (usft)	
800.0	800.0	0.0	0.0	START NUDGE (2°/100ft BUR)
1,607.4	1,596.8	27.5	109.6	EOB TO 16.15° INC
4,887.2	4,747.2	249.0	994.5	END OF TANGENT
5,694.6	5,543.9	276.5	1,104.1	EOD TO VERTICAL
5,724.6	5,573.9	276.5	1,104.1	KOP (12°/100ft BUR)
6,349.6	6,035.1	274.2	750.2	START OF TANGENT
6,449.6	6,061.0	273.6	653.6	END OF TANGENT
6,574.6	6,077.2	272.8	530.0	7" ICP *NEW* - STATE PRONGHORN 44-32-31MRLNB
12,068.8	6,077.2	237.3	-4,964.0	BHL - STATE PRONGHORN 44-32-31MRLNB