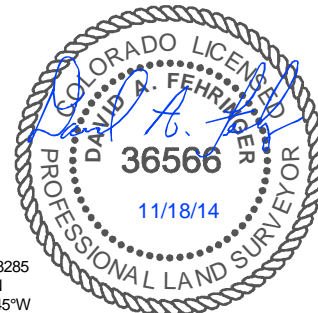


3.25" BC BLM1974  
LAT 40.36451°N  
LONG 104.24219°W

3.25" BC BLM1974  
LAT 40.36454°N  
LONG 104.23288°W

1.5" BC ILLEGIBLE  
LAT 40.36457°N  
LONG 104.22358°W

NOTE: Under Colorado law,  
you must commence any legal  
action based upon any defect  
in this certificate within three  
years after defect is  
discovered. In no event, may  
any action based upon any  
defect in this survey be  
commenced more than ten  
years after date of this  
certificate shown hereon.  
(13-80105 C.R.S.)



3.25" BC BLM1974  
LAT 40.35722°N  
LONG 104.24213°W

2.5" AC PELS28285  
LAT 40.35728°N  
LONG 104.22345°W

32

TARGET 1  
660'FSL; 531'FEL

SURFACE LOCATION

392'

1123'

3.25" BC BLM1974  
LAT 40.34992°N  
LONG 104.24207°W

3.25" BC BLM1974  
LAT 40.34994°N  
LONG 104.23269°W

3.25" BC BLM1949  
LAT 40.34998°N  
LONG 104.22331°W

## CERTIFICATE OF SURVEYOR

I, David A. Fehringer of Lander, Wyoming hereby certify that this well location certificate was prepared from notes taken during an actual survey on NOVEMBER 14, 2014; and that it correctly shows the drilling location of BONANZA CREEK ENERGY, INC., STATE PRONGHORN 44-32-31MRLNB as staked during said survey. This map does not represent a boundary survey or an improvement location plat and should not be used for the establishment of boundary lines.

## WELL COORDINATES

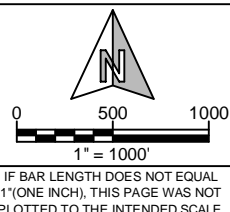
44-32-31MRLNB	NAD 83		COLORADO NORTH NAD83	
	LATITUDE	LONGITUDE	NORTHING	EASTING
SURFACE	40.35104	104.22736	1373271	3354687
TARGET 1	40.35179	104.22525	1373551	3355271
BOTTOM HOLE	40.35169	104.24517	1373437	3349720

## NOTES:

- All bearings are GRID based upon the Colorado State Plane Coordinate System, North Zone, NAD83(2011) derived from post-processed static GPS observations.
- Distances are at GRID
- Vertical Datum is NAVD88 based upon GPS observations
- PDOP value equals 1.4.
- GPS operator: Marc Mayer.
- Undisturbed ground elevation at wellhead = 4530.2'
- (M) Measured distance;
- Nearest Cultural Distances
  - Buildings: 5280'+
  - Building Unit: 5280'+
  - High Occupancy Building Unit: 5280'+
  - Designated Outside Activity Area: 5280'+
  - Public Road: 400'+/-
  - Above Ground Utility: 5280'+
  - Railroad: 5280'+
  - Property Line: 392' +/-



Drawn By: MAM  
Checked By: DAF  
Date: 11/17/14  
Revision: 1  
Date: 12/02/14  
Explanation:  
WELL LAYOUT



## WELL LOCATION CERTIFICATE

STATE PRONGHORN  
44-32-31MRLNB  
SE $\frac{1}{4}$ SE $\frac{1}{4}$ , SECTION 32,  
T.5N., R.61W., 6th PM  
WELD COUNTY, COLORADO



410 17th Street  
Denver, CO 80202  
(720) 440-6100

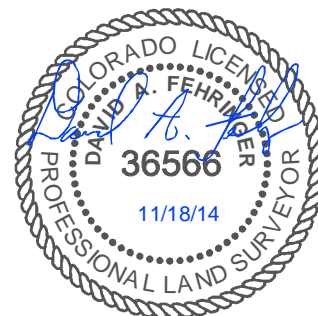
SHEET  
1  
OF  
2

3.25" BC BLM1974  
LAT 40.36432°N  
LONG 104.26160°W

N88°28'23"E - 5402.67(M)

3.25" BC BLM1974  
LAT 40.36451°N  
LONG 104.24219°W

NOTE: Under Colorado law, you must commence any legal action based upon any defect in this certificate within three years after defect is discovered. In no event, may any action based upon any defect in this survey be commenced more than ten years after date of this certificate shown hereon. (13-80105 C.R.S.)



N01°09'27"W - 2667.87(M)

N01°09'24"W - 2668.00(M)

S88°49'36"W - 6200.19(M)

3.25" BC BLM1974  
LAT 40.35722°N  
LONG 104.24213°W

3.25" BC BLM1974  
LAT 40.34992°N  
LONG 104.24207°W

BOTTOM HOLE LOCATION



660'

860'

## CERTIFICATE OF SURVEYOR

I, David A. Fehringer of Lander, Wyoming hereby certify that this well location certificate was prepared from notes taken during an actual survey on NOVEMBER 14, 2014; and that it correctly shows the drilling location of BONANZA CREEK ENERGY, INC., STATE PRONGHORN 44-32-31MRLNB as staked during said survey. This map does not represent a boundary survey or an improvement location plat and should not be used for the establishment of boundary lines.

## WELL COORDINATES

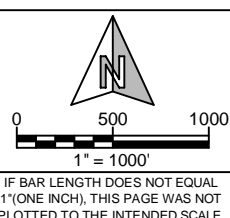
44-32-31MRLNB	NAD 83		COLORADO NORTH NAD83	
	LATITUDE	LONGITUDE	NORTHING	EASTING
SURFACE	40.35104	104.22736	1373271	3354687
TARGET 1	40.35179	104.22525	1373551	3355271
BOTTOM HOLE	40.35169	104.24517	1373437	3349720

## NOTES:

- All bearings are GRID based upon the Colorado State Plane Coordinate System, North Zone, NAD83(2011) derived from post-processed static GPS observations.
- Distances are at GRID
- Vertical Datum is NAVD88 based upon GPS observations
- PDOP value equals 1.4.
- GPS operator: Marc Mayer.
- Undisturbed ground elevation at wellhead = 4530.2'
- (M) Measured distance;
- Nearest Cultural Distances
  - Buildings: 5280'+
  - Building Unit: 5280'+
  - High Occupancy Building Unit: 5280'+
  - Designated Outside Activity Area: 5280'+
  - Public Road: 400' +/-
  - Above Ground Utility: 5280'+
  - Railroad: 5280'+
  - Property Line: 392' +/-



Drawn By: MAM  
Checked By: DAF  
Date: 11/17/14  
Revision: 1  
Date: 12/02/14  
Explanation:  
WELL LAYOUT



## WELL LOCATION CERTIFICATE

STATE PRONGHORN  
44-32-31MRLNB  
(BOTTOM HOLE)  
SE $\frac{1}{4}$ SE $\frac{1}{4}$ , SECTION 31,  
T.5N., R.61W., 6th PM  
WELD COUNTY, COLORADO



SHEET  
2  
OF  
2