

January 30, 2015



410 17th Street, Suite 1500
Denver, CO 80202
(720) 440-6100 phone
(720) 279-2331 fax

BonanzaCreek.com

Colorado Oil and Gas Conservation Commission
The Chancery Building
1120 Lincoln Street, Suite 801
Denver, CO 80203

Attn: Matthew Lepore, Director

Re: Notice of 318A.a.(4).D Well Proposal
State Pronghorn 43-32-31MRLNB
SHL: SESE 571' FSL & 1107' FEL, Section 32, Township 5N, Range 61W
Top of Production: NESE 1980' FSL & 631' FEL, Section 32-T5N-R61W
Bottom of Production: NESE 1980' FSL & 860' FEL, Section 31-T5N-R61W, Weld
County, Colorado

Director Lepore:

Bonanza Creek Energy Operating Company, LLC. (Bonanza) intends to permit, drill and operate the referenced Niobrara Horizontal Well. As defined by Colorado Oil and Gas Conservation Commission (COGCC) Rule 318A.a.(4)D., Bonanza proposes the following wellbore spacing unit:

N/2 S/2 Section 32-T5N-R61W 6th PM, Weld County, CO – containing 160 Acres more or less
NE/4 SE/4 Section 31-T5N-R61W 6th PM, Weld County, CO – containing 40 Acres more or less

Bonanza has notified the other owners in the unit and no objections were received. Copies of the notifications are maintained in Bonanza's files.

Bonanza respectfully requests that you review the enclosed wellbore spacing unit documentation and approve the referenced Application for Permit to Drill.

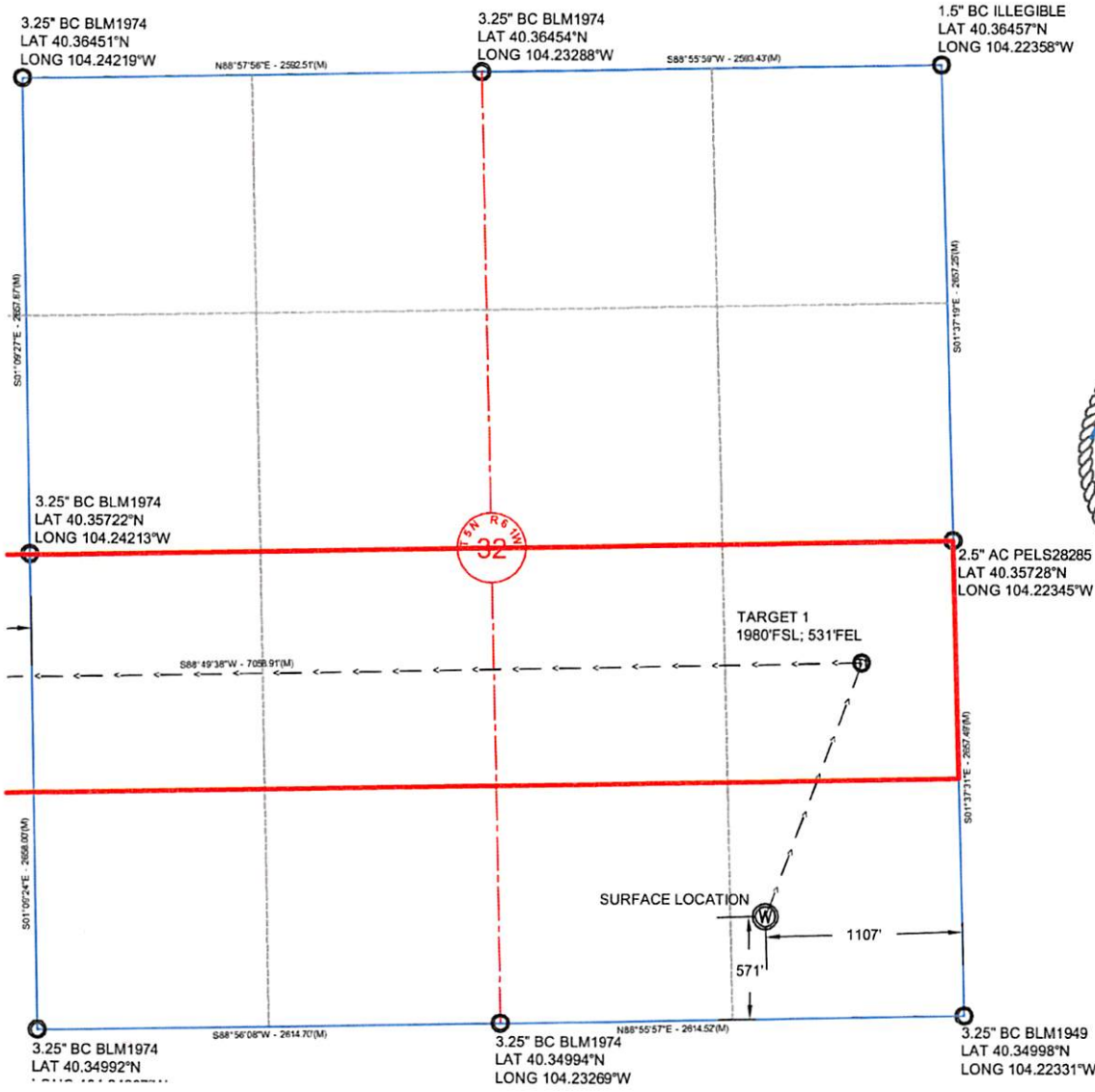
Sincerely,

Julie L. Vigil

Sr. Regulatory Specialist

BONANZA CREEK ENERGY OPERATING COMPANY, LLC.

PRONGHORN 43-32-CERT1349g SAVED DATE 2014-12-10 14:23



NOTE: Under Colorado law, you must commence any legal action based upon any defect in this certificate within three years after defect is discovered. In no event, may any action based upon any defect in this survey be commenced more than ten years after date of this certificate shown hereon. (13-80105 C.R.S)

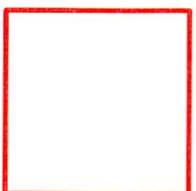


CERTIFICATE OF SURVEYOR

I, David A. Fehring of Lander, Wyoming hereby certify that this well location certificate was prepared from notes taken during an actual survey on NOVEMBER 14, 2014; and that it correctly shows the drilling location of BONANZA CREEK ENERGY, INC., STATE PRONGHORN 43-32-31MRLNB as staked during said survey. This map does not represent a boundary survey.

NOTES:

- All bearings are GRID based upon the Colorado State Plane Coordinate System, North Zone, NAD83(2011) derived from post-processed static GPS observations.
- Distances are at GRID
- Vertical Datum is NAVD88 based upon GPS observations



Wellbore Spacing Unit Outline



Wellbore Spacing Unit Map
17 December 2014 ksc

State Pronghorn 43-32-31MRLNB p1
N/2 S/2 Sec 32-T5N-R61W 6th PM
NE/4 SE/4 Sec 31-T5N-R61W 6th PM
Weld County, Colorado

A circular professional seal for a Colorado Licensed Professional Land Surveyor. The outer ring contains the text "COLORADO LICENSED" at the top and "PROFESSIONAL LAND SURVEYOR" at the bottom, separated by a rope-like border. Inside the ring, the name "DAVID A. FEHRINGER" is written in a semi-circle. Below the name is the license number "36566" and the expiration date "11/18/14". The seal is stamped in blue ink on a white background.

