

BONANZA CREEK ENERGY INC.

WELD COUNTY, COLORADO (NAD 83)

SE SE SEC.32 T5N R61W 6th P.M.

STATE PRONGHORN 43-32-31MRLNB

ORIGINAL WELLBORE

18 December, 2014

Plan: PROPOSAL #1

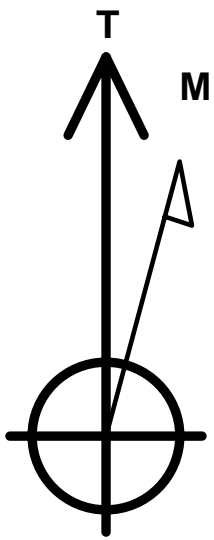
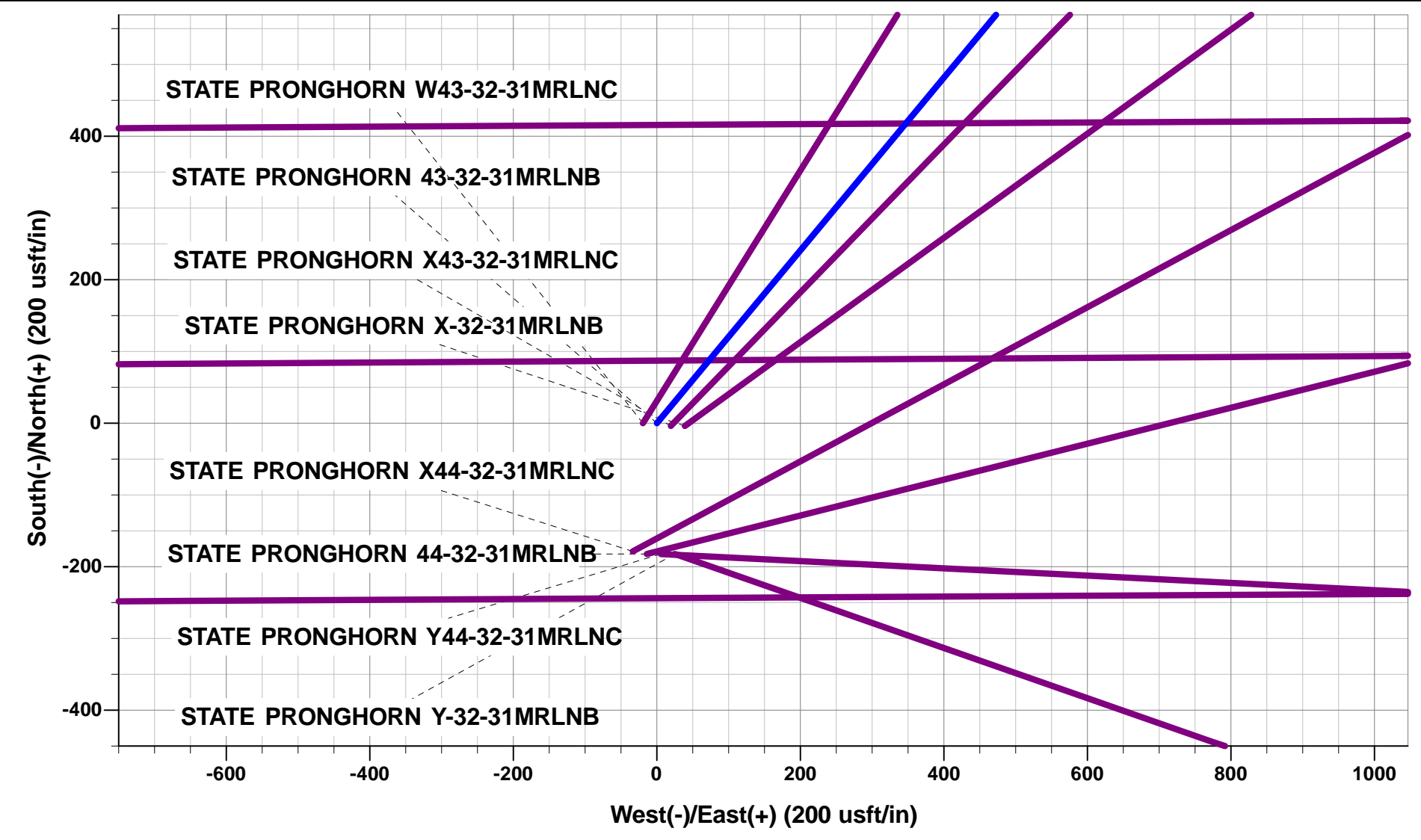




Project: WELD COUNTY, COLORADO (NAD 83)
Site: SE SE SEC.32 T5N R61W 6th P.M.
Well: STATE PRONGHORN 43-32-31MRLNB
Wellbore: ORIGINAL WELLBORE
Design: PROPOSAL #1

ANNOTATIONS									
TVD	MD	Inc	Azi	+N/-S	+E/-W	VSec	Dep	Annotation	
800.0	800.0	0.00	0.00	0.0	0.0	0.0	0.0	START NUDGE (2°/100ft BUR)	
2062.7	2107.6	26.15	39.70	225.7	187.3	-120.5	293.3	EOB TO 26.15° INC	
4281.3	4579.3	26.15	39.70	1063.9	883.2	-568.0	1382.7	END OF TANGENT	
5544.0	5886.9	0.00	0.00	1289.5	1070.5	-688.4	1675.9	EOD TO VERTICAL	
5574.0	5916.9	0.00	0.00	1289.5	1070.5	-688.4	1675.9	KOP (12°/100ft BUR)	
6035.2	6541.9	75.00	270.83	1294.6	716.6	-346.0	2029.8	START OF TANGENT	
6061.1	6641.9	75.00	270.83	1296.0	620.1	-252.5	2126.4	END OF TANGENT	
6077.3	6766.9	90.00	270.83	1297.8	496.5	-132.9	2250.0	7" ICP *NEW* - STATE PRONGHORN 43-32-31MRLNB	
6077.3	12250.0	90.00	270.84	1377.6	-4986.0	5172.8	7733.1	BHL - STATE PRONGHORN 43-32-31MRLNB	

WELLBORE TARGET DETAILS (LAT/LONG)					
Name	TVD	+N/-S	+E/-W	Latitude	Longitude
KOP - STATE PRONGHORN 43-32-31MRLNB	5574.0	1289.5	1070.5	40.355079	-104.223469
BHL - STATE PRONGHORN 43-32-31MRLNB	6077.3	1377.6	-4986.0	40.355320	-104.245200
7" ICP *NEW* - STATE PRONGHORN 43-32-31MRLNB	6077.3	1297.8	496.5	40.355102	-104.225529



Azimuths to True North
Magnetic North: 8.10°

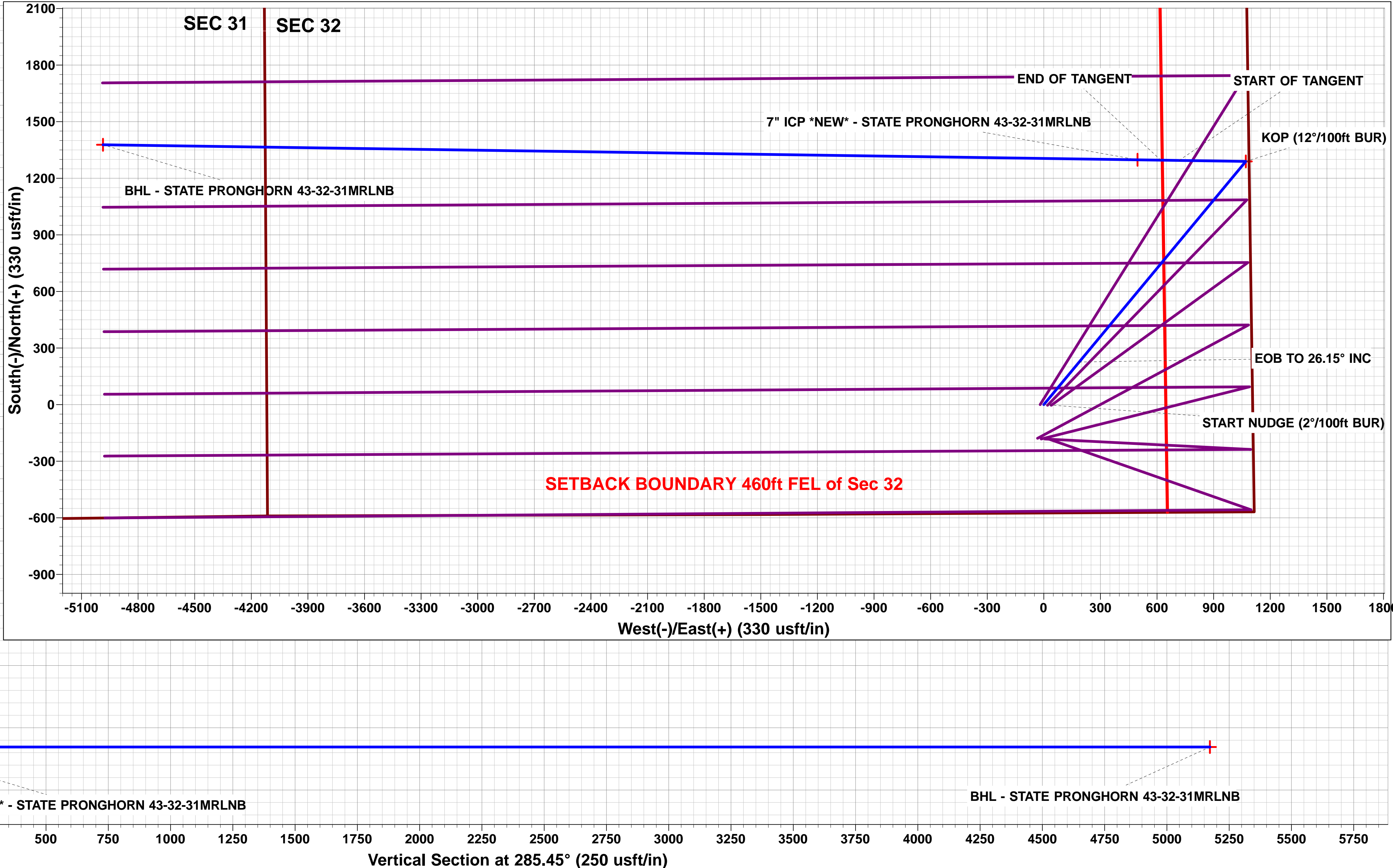
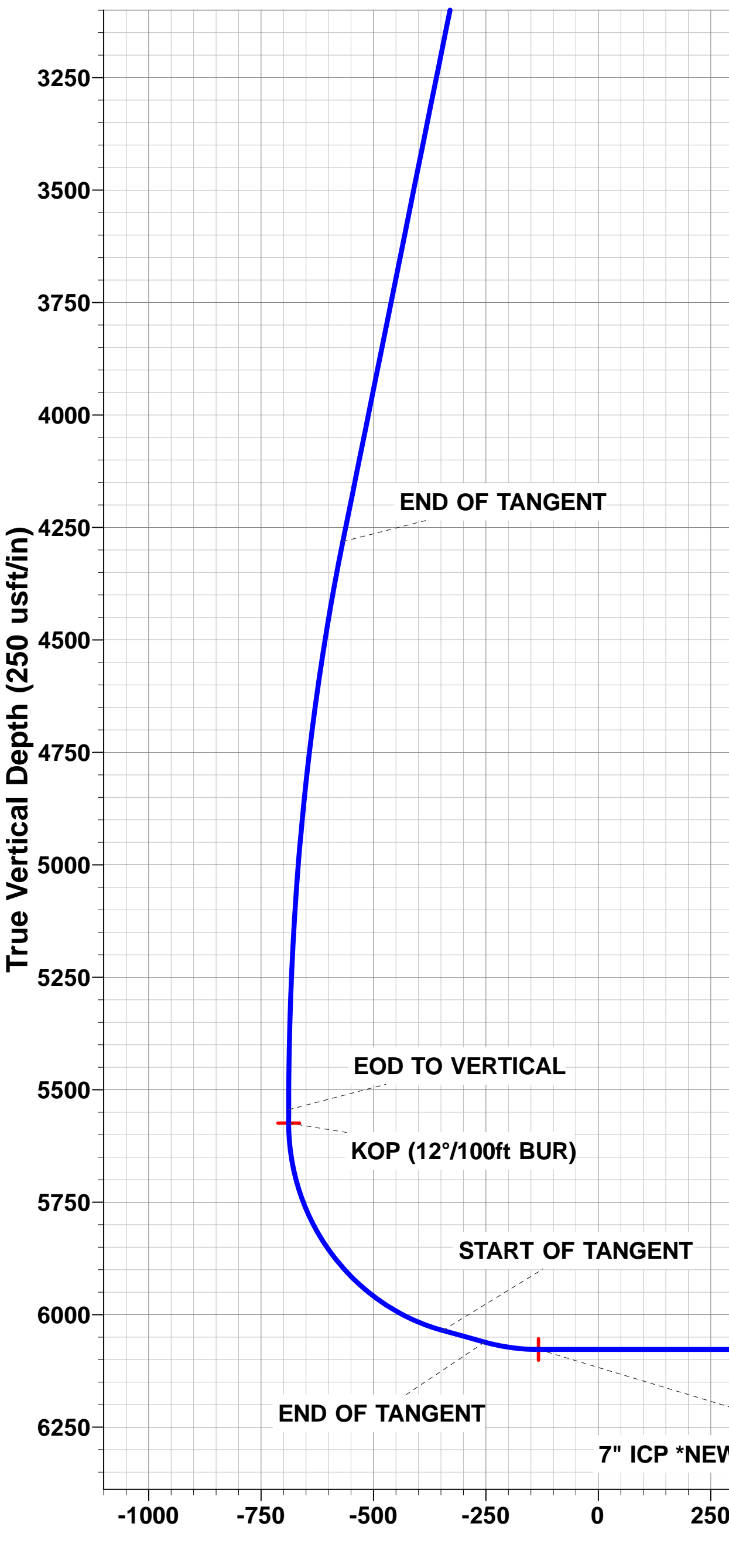
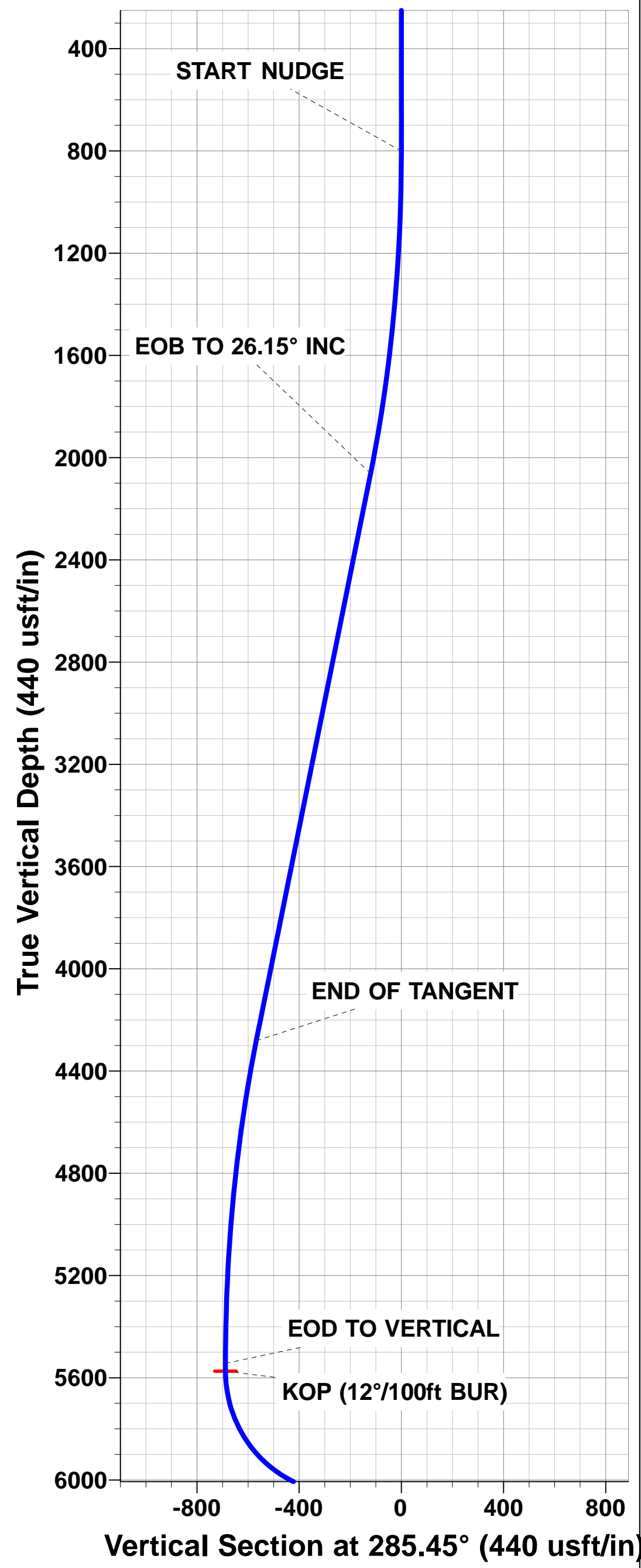
Magnetic Field
Strength: 52798.3snT
Dip Angle: 66.98°
Date: 02/12/2014
Model: IGRF2010

PROPOSED LOCAL COORDINATES

SHL: 571ft FSL & 1107ft FWL of Sec 32

7" ICP *NEW*: 1980ft FSL & 589ft FWL of Sec 32

BHL: 1980ft FSL & 860ft FEL of Sec 31



Planning Report



Database:	EDM 5000.1 Single User Db	Local Co-ordinate Reference:	Well STATE PRONGHORN 43-32-31MRLNB
Company:	BONANZA CREEK ENERGY INC.	TVD Reference:	KB-EST @ 4547.3usft (Original Well Elev)
Project:	WELD COUNTY, COLORADO (NAD 83)	MD Reference:	KB-EST @ 4547.3usft (Original Well Elev)
Site:	SE SE SEC.32 T5N R61W 6th P.M.	North Reference:	True
Well:	STATE PRONGHORN 43-32-31MRLNB	Survey Calculation Method:	Minimum Curvature
Wellbore:	ORIGINAL WELLBORE		
Design:	PROPOSAL #1		

Project	WELD COUNTY, COLORADO (NAD 83)		
Map System:	US State Plane 1983	System Datum:	Mean Sea Level
Geo Datum:	North American Datum 1983		
Map Zone:	Colorado Northern Zone		Using geodetic scale factor

Site	SE SE SEC.32 T5N R61W 6th P.M.		
Site Position:		Northing:	1,373,448.99 usft
From:	Lat/Long	Easting:	3,354,737.61 usft
Position Uncertainty:	0.0 usft	Slot Radius:	1.10000ft
		Latitude:	40.351530
		Longitude:	-104.227170
		Grid Convergence:	0.82 °

Well	STATE PRONGHORN 43-32-31MRLNB		
Well Position	+N-S	3.6 usft	Northing:
	+E-W	-39.0 usft	Easting:
Position Uncertainty		0.0 usft	Wellhead Elevation:
			Latitude:
			Longitude:
			Ground Level:

Wellbore	ORIGINAL WELLBORE				
Magnetics	Model Name	Sample Date	Declination (°)	Dip Angle (°)	Field Strength (nT)
	IGRF2010	02/12/2014	8.10	66.98	52,798

Design	PROPOSAL #1			
Audit Notes:				
Version:	Phase:	PROTOTYPE	Tie On Depth:	0.0
Vertical Section:	Depth From (TVD) (usft)	+N-S (usft)	+E-W (usft)	Direction (°)
	0.0	0.0	0.0	285.44

Plan Sections											
MD (usft)	Inc (°)	Azi (°)	Vertical Depth	SS (usft)	+N-S (usft)	+E-W (usft)	Dogleg Rate (°/100usf)	Build Rate (°/100usf)	Turn Rate (°/100usf)	TFO (°)	Target
0.0	0.00	0.00	0.0	-4,547.3	0.0	0.0	0.00	0.00	0.00	0.00	
800.0	0.00	0.00	800.0	-3,747.3	0.0	0.0	0.00	0.00	0.00	0.00	
2,107.6	26.15	39.70	2,062.7	-2,484.6	225.6	187.3	2.00	2.00	0.00	39.70	
4,579.3	26.15	39.70	4,281.3	-266.0	1,063.9	883.2	0.00	0.00	0.00	0.00	
5,886.9	0.00	0.00	5,544.0	996.7	1,289.5	1,070.5	2.00	-2.00	0.00	180.00	
5,916.9	0.00	0.00	5,574.0	1,026.7	1,289.5	1,070.5	0.00	0.00	0.00	0.00	KOP - STATE PRO
6,541.9	75.00	270.83	6,035.2	1,487.9	1,294.6	716.6	12.00	12.00	0.00	270.83	
6,641.9	75.00	270.83	6,061.1	1,513.8	1,296.0	620.1	0.00	0.00	0.00	0.00	
6,766.9	90.00	270.83	6,077.3	1,530.0	1,297.8	496.5	12.00	12.00	0.00	0.00	
12,250.0	90.00	270.84	6,077.3	1,530.0	1,377.6	-4,986.0	0.00	0.00	0.00	82.49	BHL - STATE PROI

Planning Report



Database:	EDM 5000.1 Single User Db	Local Co-ordinate Reference:	Well STATE PRONGHORN 43-32-31MRLNB
Company:	BONANZA CREEK ENERGY INC.	TVD Reference:	KB-EST @ 4547.3usft (Original Well Elev)
Project:	WELD COUNTY, COLORADO (NAD 83)	MD Reference:	KB-EST @ 4547.3usft (Original Well Elev)
Site:	SE SE SEC.32 T5N R61W 6th P.M.	North Reference:	True
Well:	STATE PRONGHORN 43-32-31MRLNB	Survey Calculation Method:	Minimum Curvature
Wellbore:	ORIGINAL WELLBORE		
Design:	PROPOSAL #1		

Planned Survey										
MD (usft)	Inc (°)	Azi (°)	TVD (usft)	SS (usft)	+N/-S (usft)	+E/-W (usft)	Vertical Section (usft)	Dogleg Rate (°/100usft)	Build Rate (°/100usft)	Turn Rate (°/100usft)
0.0	0.00	0.00	0.0	4,547.30	0.0	0.0	0.0	0.00	0.00	0.00
100.0	0.00	0.00	100.0	4,447.30	0.0	0.0	0.0	0.00	0.00	0.00
200.0	0.00	0.00	200.0	4,347.30	0.0	0.0	0.0	0.00	0.00	0.00
300.0	0.00	0.00	300.0	4,247.30	0.0	0.0	0.0	0.00	0.00	0.00
400.0	0.00	0.00	400.0	4,147.30	0.0	0.0	0.0	0.00	0.00	0.00
500.0	0.00	0.00	500.0	4,047.30	0.0	0.0	0.0	0.00	0.00	0.00
600.0	0.00	0.00	600.0	3,947.30	0.0	0.0	0.0	0.00	0.00	0.00
700.0	0.00	0.00	700.0	3,847.30	0.0	0.0	0.0	0.00	0.00	0.00
START NUDGE (2°/100ft BUR)										
800.0	0.00	0.00	800.0	3,747.30	0.0	0.0	0.0	0.00	0.00	0.00
900.0	2.00	39.70	900.0	3,647.32	1.3	1.1	-0.7	2.00	2.00	0.00
1,000.0	4.00	39.70	999.8	3,547.46	5.4	4.5	-2.9	2.00	2.00	0.00
1,100.0	6.00	39.70	1,099.5	3,447.85	12.1	10.0	-6.4	2.00	2.00	0.00
1,200.0	8.00	39.70	1,198.7	3,348.60	21.5	17.8	-11.5	2.00	2.00	0.00
1,300.0	10.00	39.70	1,297.5	3,249.83	33.5	27.8	-17.9	2.00	2.00	0.00
1,400.0	12.00	39.70	1,395.6	3,151.68	48.2	40.0	-25.7	2.00	2.00	0.00
1,500.0	14.00	39.70	1,493.1	3,054.24	65.5	54.4	-35.0	2.00	2.00	0.00
1,600.0	16.00	39.70	1,589.6	2,957.66	85.4	70.9	-45.6	2.00	2.00	0.00
1,700.0	18.00	39.70	1,685.3	2,862.03	107.9	89.6	-57.6	2.00	2.00	0.00
1,800.0	20.00	39.70	1,779.8	2,767.48	132.9	110.4	-71.0	2.00	2.00	0.00
1,900.0	22.00	39.70	1,873.2	2,674.13	160.5	133.2	-85.7	2.00	2.00	0.00
2,000.0	24.00	39.70	1,965.2	2,582.09	190.6	158.2	-101.7	2.00	2.00	0.00
2,100.0	26.00	39.70	2,055.8	2,491.46	223.1	185.2	-119.1	2.00	2.00	0.00
EOB TO 26.15° INC										
2,107.6	26.15	39.70	2,062.7	2,484.63	225.7	187.3	-120.5	2.00	2.00	0.00
2,200.0	26.15	39.70	2,145.6	2,401.69	257.0	213.3	-137.2	0.00	0.00	0.00
2,300.0	26.15	39.70	2,235.4	2,311.93	290.9	241.5	-155.3	0.00	0.00	0.00
2,400.0	26.15	39.70	2,325.1	2,222.17	324.8	269.6	-173.4	0.00	0.00	0.00
2,500.0	26.15	39.70	2,414.9	2,132.40	358.7	297.8	-191.5	0.00	0.00	0.00
2,600.0	26.15	39.70	2,504.7	2,042.64	392.6	326.0	-209.6	0.00	0.00	0.00
2,700.0	26.15	39.70	2,594.4	1,952.88	426.5	354.1	-227.7	0.00	0.00	0.00
2,800.0	26.15	39.70	2,684.2	1,863.11	460.5	382.3	-245.8	0.00	0.00	0.00
2,900.0	26.15	39.70	2,773.9	1,773.35	494.4	410.4	-263.9	0.00	0.00	0.00
3,000.0	26.15	39.70	2,863.7	1,683.59	528.3	438.6	-282.0	0.00	0.00	0.00
3,100.0	26.15	39.70	2,953.5	1,593.82	562.2	466.7	-300.1	0.00	0.00	0.00
3,200.0	26.15	39.70	3,043.2	1,504.06	596.1	494.9	-318.2	0.00	0.00	0.00
3,300.0	26.15	39.70	3,133.0	1,414.30	630.0	523.0	-336.3	0.00	0.00	0.00
3,400.0	26.15	39.70	3,222.8	1,324.53	663.9	551.2	-354.5	0.00	0.00	0.00
3,500.0	26.15	39.70	3,312.5	1,234.77	697.8	579.3	-372.6	0.00	0.00	0.00
3,600.0	26.15	39.70	3,402.3	1,145.01	731.8	607.5	-390.7	0.00	0.00	0.00
3,700.0	26.15	39.70	3,492.1	1,055.25	765.7	635.6	-408.8	0.00	0.00	0.00
3,800.0	26.15	39.70	3,581.8	965.48	799.6	663.8	-426.9	0.00	0.00	0.00
3,900.0	26.15	39.70	3,671.6	875.72	833.5	691.9	-445.0	0.00	0.00	0.00
4,000.0	26.15	39.70	3,761.3	785.96	867.4	720.1	-463.1	0.00	0.00	0.00
4,100.0	26.15	39.70	3,851.1	696.19	901.3	748.2	-481.2	0.00	0.00	0.00
4,200.0	26.15	39.70	3,940.9	606.43	935.2	776.4	-499.3	0.00	0.00	0.00
4,300.0	26.15	39.70	4,030.6	516.67	969.1	804.5	-517.4	0.00	0.00	0.00
4,400.0	26.15	39.70	4,120.4	426.90	1,003.0	832.7	-535.5	0.00	0.00	0.00
4,500.0	26.15	39.70	4,210.2	337.14	1,037.0	860.9	-553.6	0.00	0.00	0.00
END OF TANGENT										
4,579.3	26.15	39.70	4,281.3	265.96	1,063.9	883.2	-568.0	0.00	0.00	0.00
4,600.0	25.74	39.70	4,300.0	247.34	1,070.8	889.0	-571.7	2.00	-2.00	0.00
4,700.0	23.74	39.70	4,390.8	156.53	1,103.0	915.7	-588.9	2.00	-2.00	0.00

Planning Report



Database:	EDM 5000.1 Single User Db	Local Co-ordinate Reference:	Well STATE PRONGHORN 43-32-31MRLNB
Company:	BONANZA CREEK ENERGY INC.	TVD Reference:	KB-EST @ 4547.3usft (Original Well Elev)
Project:	WELD COUNTY, COLORADO (NAD 83)	MD Reference:	KB-EST @ 4547.3usft (Original Well Elev)
Site:	SE SE SEC.32 T5N R61W 6th P.M.	North Reference:	True
Well:	STATE PRONGHORN 43-32-31MRLNB	Survey Calculation Method:	Minimum Curvature
Wellbore:	ORIGINAL WELLBORE		
Design:	PROPOSAL #1		

Planned Survey

MD (usft)	Inc (°)	Azi (°)	TVD (usft)	SS (usft)	+N/-S (usft)	+E/-W (usft)	Vertical Section (usft)	Dogleg Rate (°/100usft)	Build Rate (°/100usft)	Turn Rate (°/100usft)
4,800.0	21.74	39.70	4,483.0	64.30	1,132.8	940.4	-604.7	2.00	-2.00	0.00
4,900.0	19.74	39.70	4,576.5	-29.21	1,160.0	963.0	-619.3	2.00	-2.00	0.00
5,000.0	17.74	39.70	4,671.2	-123.91	1,184.7	983.5	-632.5	2.00	-2.00	0.00
5,100.0	15.74	39.70	4,767.0	-219.67	1,206.9	1,001.9	-644.3	2.00	-2.00	0.00
5,200.0	13.74	39.70	4,863.7	-316.37	1,226.4	1,018.2	-654.8	2.00	-2.00	0.00
5,300.0	11.74	39.70	4,961.2	-413.91	1,243.4	1,032.2	-663.8	2.00	-2.00	0.00
5,400.0	9.74	39.70	5,059.5	-512.15	1,257.7	1,044.1	-671.5	2.00	-2.00	0.00
5,500.0	7.74	39.70	5,158.3	-610.98	1,269.4	1,053.8	-677.7	2.00	-2.00	0.00
5,600.0	5.74	39.70	5,257.6	-710.29	1,278.5	1,061.3	-682.5	2.00	-2.00	0.00
5,700.0	3.74	39.70	5,357.2	-809.94	1,284.8	1,066.6	-685.9	2.00	-2.00	0.00
5,800.0	1.74	39.70	5,457.1	-909.82	1,288.5	1,069.7	-687.9	2.00	-2.00	0.00
EOD TO VERTICAL										
5,886.9	0.00	0.00	5,544.0	-996.71	1,289.5	1,070.5	-688.4	2.00	-2.00	0.00
5,900.0	0.00	0.00	5,557.1	-1,009.81	1,289.5	1,070.5	-688.4	0.00	0.00	0.00
KOP (12°/100ft BUR)										
5,916.9	0.00	0.00	5,574.0	-1,026.71	1,289.5	1,070.5	-688.4	0.00	0.00	0.00
6,000.0	9.97	270.83	5,656.7	-1,109.39	1,289.6	1,063.3	-681.4	12.00	12.00	0.00
6,100.0	21.97	270.83	5,752.7	-1,205.35	1,290.0	1,035.8	-654.9	12.00	12.00	0.00
6,200.0	33.97	270.83	5,840.8	-1,293.51	1,290.7	989.0	-609.6	12.00	12.00	0.00
6,300.0	45.97	270.83	5,917.3	-1,370.00	1,291.6	924.9	-547.5	12.00	12.00	0.00
6,400.0	57.97	270.83	5,978.8	-1,431.49	1,292.7	846.3	-471.4	12.00	12.00	0.00
6,500.0	69.97	270.83	6,022.6	-1,475.29	1,294.0	756.6	-384.6	12.00	12.00	0.00
START OF TANGENT										
6,541.9	75.00	270.83	6,035.2	-1,487.90	1,294.6	716.6	-346.0	12.00	12.00	0.00
6,600.0	75.00	270.83	6,050.2	-1,502.94	1,295.4	660.5	-291.7	0.00	0.00	0.00
END OF TANGENT										
6,641.9	75.00	270.83	6,061.1	-1,513.78	1,296.0	620.1	-252.5	0.00	0.00	0.00
6,700.0	81.97	270.83	6,072.7	-1,525.37	1,296.8	563.2	-197.5	12.00	12.00	0.00
7" ICP *NEW* - STATE PRONGHORN 43-32-31MRLNB										
6,766.9	90.00	270.83	6,077.3	-1,530.05	1,297.8	496.5	-132.9	12.00	12.00	0.00
6,800.0	90.00	270.83	6,077.3	-1,530.05	1,298.3	463.4	-100.9	0.00	0.00	0.00
6,900.0	90.00	270.83	6,077.3	-1,530.05	1,299.7	363.4	-4.1	0.00	0.00	0.00
7,000.0	90.00	270.83	6,077.3	-1,530.05	1,301.2	263.4	92.6	0.00	0.00	0.00
7,100.0	90.00	270.83	6,077.3	-1,530.05	1,302.6	163.4	189.4	0.00	0.00	0.00
7,200.0	90.00	270.83	6,077.3	-1,530.05	1,304.1	63.4	286.1	0.00	0.00	0.00
7,300.0	90.00	270.83	6,077.3	-1,530.05	1,305.5	-36.6	382.9	0.00	0.00	0.00
7,400.0	90.00	270.83	6,077.3	-1,530.05	1,307.0	-136.5	479.7	0.00	0.00	0.00
7,500.0	90.00	270.83	6,077.3	-1,530.05	1,308.4	-236.5	576.4	0.00	0.00	0.00
7,600.0	90.00	270.83	6,077.3	-1,530.05	1,309.9	-336.5	673.2	0.00	0.00	0.00
7,700.0	90.00	270.83	6,077.3	-1,530.05	1,311.3	-436.5	770.0	0.00	0.00	0.00
7,800.0	90.00	270.83	6,077.3	-1,530.05	1,312.8	-536.5	866.7	0.00	0.00	0.00
7,900.0	90.00	270.83	6,077.3	-1,530.04	1,314.2	-636.5	963.5	0.00	0.00	0.00
8,000.0	90.00	270.83	6,077.3	-1,530.04	1,315.7	-736.5	1,060.3	0.00	0.00	0.00
8,100.0	90.00	270.83	6,077.3	-1,530.04	1,317.1	-836.5	1,157.0	0.00	0.00	0.00
8,200.0	90.00	270.83	6,077.3	-1,530.04	1,318.6	-936.5	1,253.8	0.00	0.00	0.00
8,300.0	90.00	270.83	6,077.3	-1,530.04	1,320.1	-1,036.4	1,350.6	0.00	0.00	0.00
8,400.0	90.00	270.83	6,077.3	-1,530.04	1,321.5	-1,136.4	1,447.3	0.00	0.00	0.00
8,500.0	90.00	270.83	6,077.3	-1,530.04	1,323.0	-1,236.4	1,544.1	0.00	0.00	0.00
8,600.0	90.00	270.83	6,077.3	-1,530.04	1,324.4	-1,336.4	1,640.9	0.00	0.00	0.00
8,700.0	90.00	270.83	6,077.3	-1,530.04	1,325.9	-1,436.4	1,737.6	0.00	0.00	0.00
8,800.0	90.00	270.83	6,077.3	-1,530.04	1,327.3	-1,536.4	1,834.4	0.00	0.00	0.00
8,900.0	90.00	270.83	6,077.3	-1,530.04	1,328.8	-1,636.4	1,931.2	0.00	0.00	0.00
9,000.0	90.00	270.83	6,077.3	-1,530.04	1,330.2	-1,736.4	2,027.9	0.00	0.00	0.00
9,100.0	90.00	270.83	6,077.3	-1,530.04	1,331.7	-1,836.4	2,124.7	0.00	0.00	0.00

Planning Report



Database:	EDM 5000.1 Single User Db	Local Co-ordinate Reference:	Well STATE PRONGHORN 43-32-31MRLNB
Company:	BONANZA CREEK ENERGY INC.	TVD Reference:	KB-EST @ 4547.3usft (Original Well Elev)
Project:	WELD COUNTY, COLORADO (NAD 83)	MD Reference:	KB-EST @ 4547.3usft (Original Well Elev)
Site:	SE SE SEC.32 T5N R61W 6th P.M.	North Reference:	True
Well:	STATE PRONGHORN 43-32-31MRLNB	Survey Calculation Method:	Minimum Curvature
Wellbore:	ORIGINAL WELLBORE		
Design:	PROPOSAL #1		

Planned Survey

MD (usft)	Inc (°)	Azi (°)	TVD (usft)	SS (usft)	+N/-S (usft)	+E/-W (usft)	Vertical Section (usft)	Dogleg Rate (°/100usft)	Build Rate (°/100usft)	Turn Rate (°/100usft)
9,200.0	90.00	270.83	6,077.3	-1,530.04	1,333.1	-1,936.4	2,221.5	0.00	0.00	0.00
9,300.0	90.00	270.83	6,077.3	-1,530.04	1,334.6	-2,036.3	2,318.2	0.00	0.00	0.00
9,400.0	90.00	270.83	6,077.3	-1,530.04	1,336.0	-2,136.3	2,415.0	0.00	0.00	0.00
9,500.0	90.00	270.83	6,077.3	-1,530.04	1,337.5	-2,236.3	2,511.7	0.00	0.00	0.00
9,600.0	90.00	270.83	6,077.3	-1,530.03	1,338.9	-2,336.3	2,608.5	0.00	0.00	0.00
9,700.0	90.00	270.83	6,077.3	-1,530.03	1,340.4	-2,436.3	2,705.3	0.00	0.00	0.00
9,800.0	90.00	270.83	6,077.3	-1,530.03	1,341.9	-2,536.3	2,802.0	0.00	0.00	0.00
9,900.0	90.00	270.83	6,077.3	-1,530.03	1,343.3	-2,636.3	2,898.8	0.00	0.00	0.00
10,000.0	90.00	270.83	6,077.3	-1,530.03	1,344.8	-2,736.3	2,995.6	0.00	0.00	0.00
10,100.0	90.00	270.83	6,077.3	-1,530.03	1,346.2	-2,836.3	3,092.3	0.00	0.00	0.00
10,200.0	90.00	270.83	6,077.3	-1,530.03	1,347.7	-2,936.2	3,189.1	0.00	0.00	0.00
10,300.0	90.00	270.83	6,077.3	-1,530.03	1,349.1	-3,036.2	3,285.9	0.00	0.00	0.00
10,400.0	90.00	270.83	6,077.3	-1,530.03	1,350.6	-3,136.2	3,382.6	0.00	0.00	0.00
10,500.0	90.00	270.84	6,077.3	-1,530.03	1,352.1	-3,236.2	3,479.4	0.00	0.00	0.00
10,600.0	90.00	270.84	6,077.3	-1,530.02	1,353.5	-3,336.2	3,576.2	0.00	0.00	0.00
10,700.0	90.00	270.84	6,077.3	-1,530.02	1,355.0	-3,436.2	3,672.9	0.00	0.00	0.00
10,800.0	90.00	270.84	6,077.3	-1,530.02	1,356.4	-3,536.2	3,769.7	0.00	0.00	0.00
10,900.0	90.00	270.84	6,077.3	-1,530.02	1,357.9	-3,636.2	3,866.5	0.00	0.00	0.00
11,000.0	90.00	270.84	6,077.3	-1,530.02	1,359.3	-3,736.2	3,963.2	0.00	0.00	0.00
11,100.0	90.00	270.84	6,077.3	-1,530.02	1,360.8	-3,836.1	4,060.0	0.00	0.00	0.00
11,200.0	90.00	270.84	6,077.3	-1,530.02	1,362.3	-3,936.1	4,156.8	0.00	0.00	0.00
11,300.0	90.00	270.84	6,077.3	-1,530.01	1,363.7	-4,036.1	4,253.5	0.00	0.00	0.00
11,400.0	90.00	270.84	6,077.3	-1,530.01	1,365.2	-4,136.1	4,350.3	0.00	0.00	0.00
11,500.0	90.00	270.84	6,077.3	-1,530.01	1,366.6	-4,236.1	4,447.1	0.00	0.00	0.00
11,600.0	90.00	270.84	6,077.3	-1,530.01	1,368.1	-4,336.1	4,543.8	0.00	0.00	0.00
11,700.0	90.00	270.84	6,077.3	-1,530.01	1,369.6	-4,436.1	4,640.6	0.00	0.00	0.00
11,800.0	90.00	270.84	6,077.3	-1,530.01	1,371.0	-4,536.1	4,737.4	0.00	0.00	0.00
11,900.0	90.00	270.84	6,077.3	-1,530.01	1,372.5	-4,636.1	4,834.1	0.00	0.00	0.00
12,000.0	90.00	270.84	6,077.3	-1,530.00	1,373.9	-4,736.1	4,930.9	0.00	0.00	0.00
12,100.0	90.00	270.84	6,077.3	-1,530.00	1,375.4	-4,836.0	5,027.7	0.00	0.00	0.00
12,200.0	90.00	270.84	6,077.3	-1,530.00	1,376.9	-4,936.0	5,124.5	0.00	0.00	0.00
BHL - STATE PRONGHORN 43-32-31MRLNB										
12,250.0	90.00	270.84	6,077.3	-1,530.00	1,377.6	-4,986.0	5,172.8	0.00	0.00	0.00

Plan Annotations

MD (usft)	TVD (usft)	Local Coordinates		Comment
		+N/-S (usft)	+E/-W (usft)	
800.0	800.0	0.0	0.0	START NUDGE (2°/100ft BUR)
2,107.6	2,062.7	225.7	187.3	EOB TO 26.15° INC
4,579.3	4,281.3	1,063.9	883.2	END OF TANGENT
5,886.9	5,544.0	1,289.5	1,070.5	EOD TO VERTICAL
5,916.9	5,574.0	1,289.5	1,070.5	KOP (12°/100ft BUR)
6,541.9	6,035.2	1,294.6	716.6	START OF TANGENT
6,641.9	6,061.1	1,296.0	620.1	END OF TANGENT
6,766.9	6,077.3	1,297.8	496.5	7" ICP *NEW* - STATE PRONGHORN 43-32-31MRLNB
12,250.0	6,077.3	1,377.6	-4,986.0	BHL - STATE PRONGHORN 43-32-31MRLNB