



# Kerr-McGee Oil & Gas Onshore LP

A subsidiary of Anadarko Petroleum Corporation

1099 18<sup>th</sup> Street  
Denver, CO 80202  
720-929-6000

January 27, 2015

Matt Lepore  
Director, Colorado Oil and Gas Conservation Commission  
Department of Natural Resources  
The Chancery Building  
1120 Lincoln Street, Suite 801  
Denver, CO 80203

Re: **30 Day Certification Letter - 318A.e**  
ENGLISH FARMS 15N-8HZ (Doc # 400745212)  
Township 1 North, Range 65 West  
Section 8: NWNE  
Unit Acreage: 200  
Unit Spacing: 01N-65W-Sec 05 SWSE  
01N-65W-Sec 08 W2E2  
Weld County, Colorado

Dear Director Lepore:

Kerr McGee Oil and Gas Onshore LP ("KMG") hereby certifies that KMG owns one hundred percent (100%) of the leasehold interest in the mineral rights in the proposed spacing unit. KMG hereby respectfully requests approval of this boundary well.

If you have any questions or issues regarding this permit, please contact Cheryl Light at (720) 929-6461.

Very truly yours,

**Kerr-McGee Oil and Gas Onshore LP**

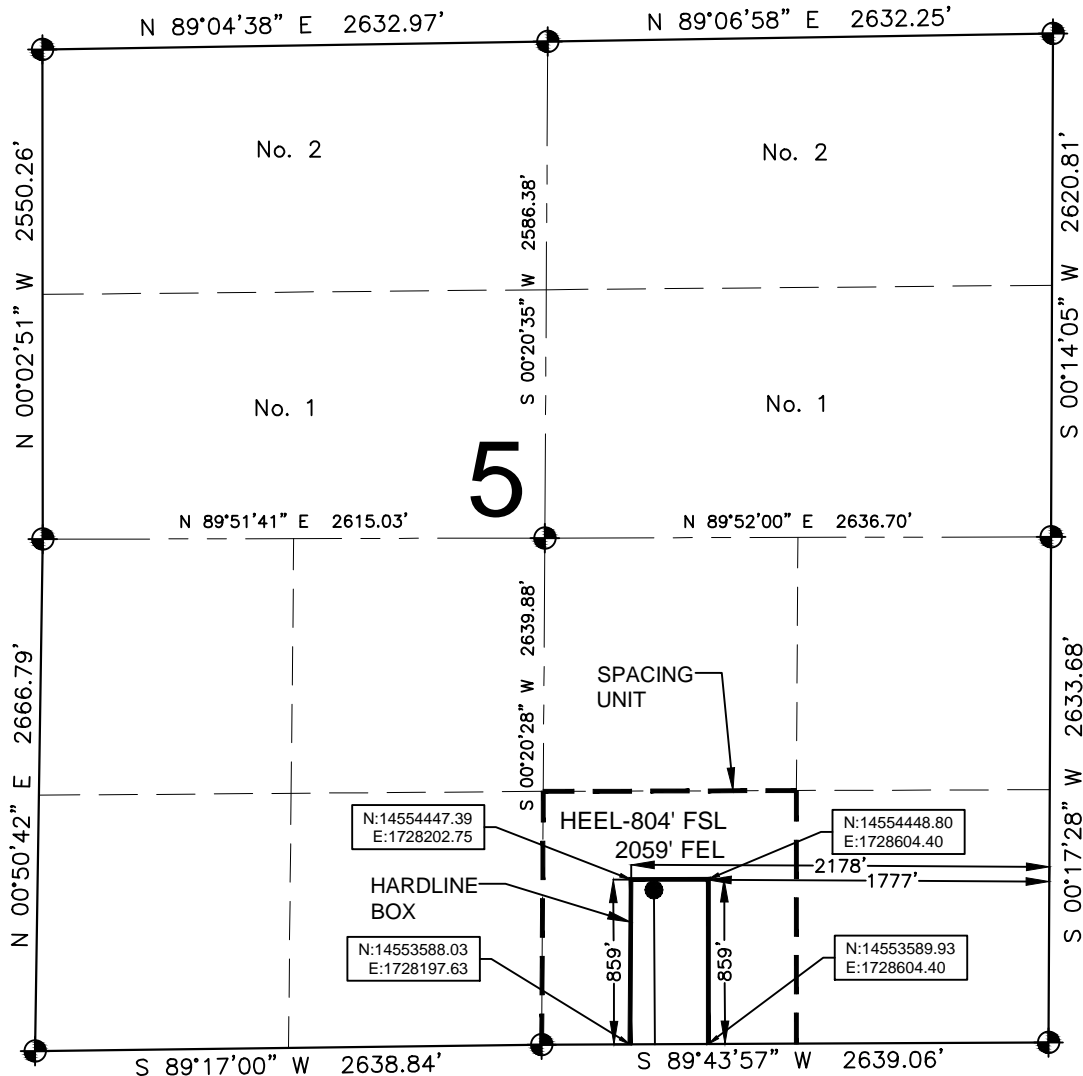
A handwritten signature in black ink, appearing to read "Mike McConaughy".

Mike McConaughy  
Sr. Regulatory Analyst

Enclosure

# HARDLINE EXHIBIT: ENGLISH FARMS 15N-8HZ

SECTION 5, TOWNSHIP 1 NORTH, RANGE 65 WEST, 6TH P.M.



## LEGEND

- = EXISTING MONUMENT
- = PROPOSED HEEL
- = CALCULATED POSITION
- ⬮ = BOTTOM HOLE
- BH = BOTTOM HOLE

## HEEL LOCATION

UTM 13  
 LATITUDE= 40.075531°  
 LONGITUDE= 104.685765°  
  
 LATITUDE= 40°04'31.910"  
 LONGITUDE= 104°41'08.752"

## QRT/QRT SECTIONS WITHIN PATH OF THE HARDLINE

SWSE, SEC. 5

## BOTTOM HOLE LOCATION

NAD83  
 LATITUDE= 40.060025°  
 LONGITUDE= 104.685710°  
  
 LATITUDE= 40°03'36.090"  
 LONGITUDE= 104°41'08.556"

## AVAILABLE FOOTAGE

5706'

## NOTES:

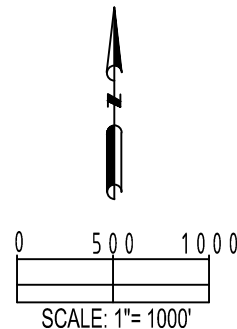
- THIS DOCUMENT IS NOT A LAND SURVEY PLAT OR IMPROVEMENT SURVEY PLAT. THIS DOCUMENT DOES NOT REFLECT A FIELD SURVEY. SECTION BREAKDOWN, MONUMENTATION AND HORIZONTAL POSITIONS SHOWN ARE BASED ON THE HEEL AND BOTTOM HOLE LOCATION PROVIDED BY ANADARKO PETROLEUM CORPORATION

PREPARED BY:



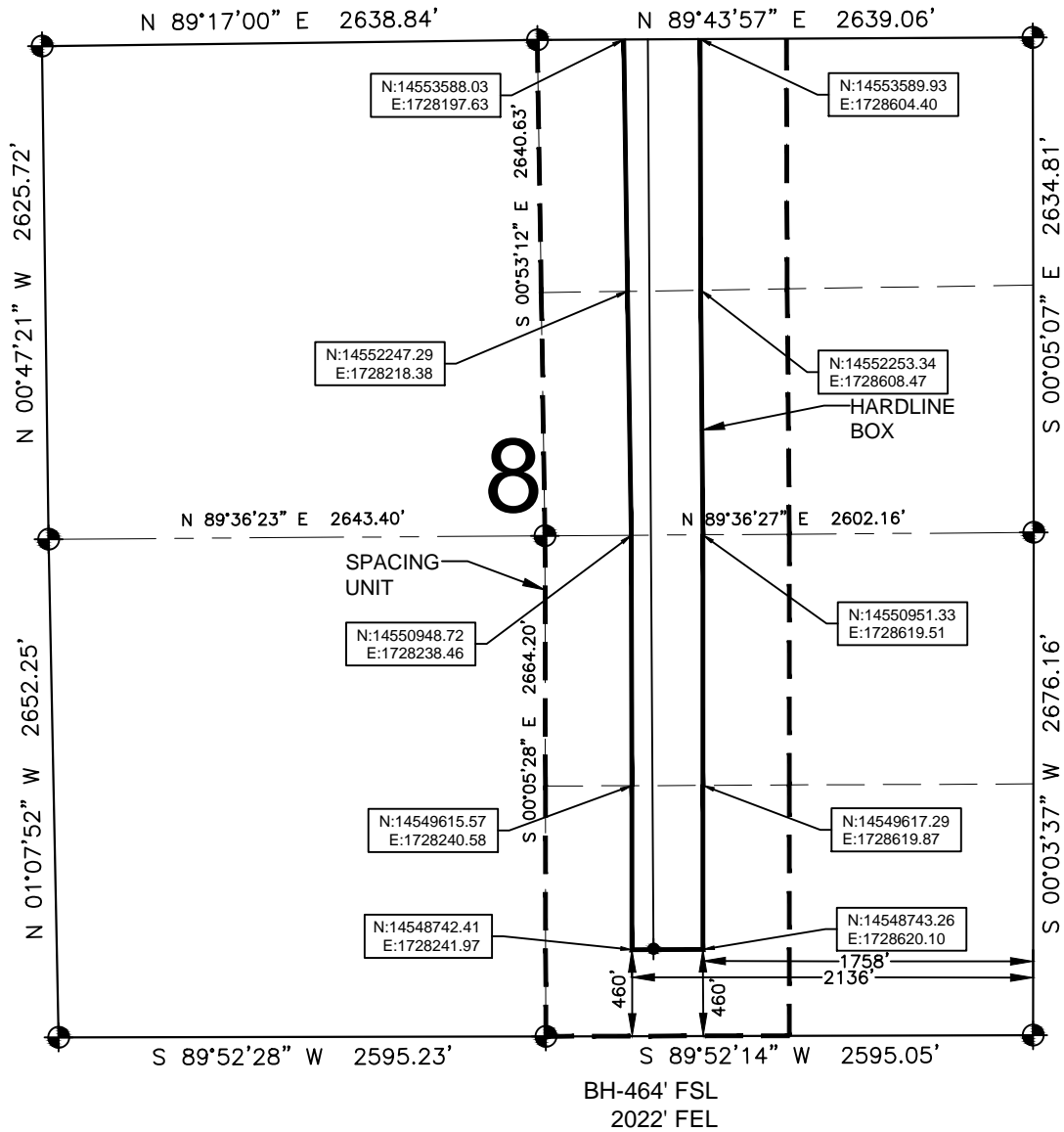
SHEET 1 OF 2

|                           |                |   |  |
|---------------------------|----------------|---|--|
| DRAWING DATE:<br>01-12-15 |                | HEEL LOCATION:<br>SW 1/4 SE 1/4,<br>SEC. 5, T1N, R65W, 6TH P.M. |  |
| BY:<br>SMF                | CHECKED<br>ATK | WELD COUNTY, COLORADO   |  |



# HARDLINE EXHIBIT: ENGLISH FARMS 15N-8HZ

SECTION 8, TOWNSHIP 1 NORTH, RANGE 65 WEST, 6TH P.M.



## LEGEND

- = EXISTING MONUMENT
- = PROPOSED HEEL
- = CALCULATED POSITION
- ⬮ = BOTTOM HOLE
- BH = BOTTOM HOLE

## QRT/QRT SECTIONS WITHIN PATH OF THE HARDLINE

NWNE, SEC. 8  
SWNE, SEC. 8  
NWSE, SEC. 8  
SWSE, SEC. 8

## NOTES:

- THIS DOCUMENT IS NOT A LAND SURVEY PLAT OR IMPROVEMENT SURVEY PLAT. THIS DOCUMENT DOES NOT REFLECT A FIELD SURVEY. SECTION BREAKDOWN, MONUMENTATION AND HORIZONTAL POSITIONS SHOWN ARE BASED ON THE HEEL AND BOTTOM HOLE LOCATION PROVIDED BY ANADARKO PETROLEUM CORPORATION