

Wellbore Diagram  
 Miller 1A  
 NWSW Sec. 6, T33N, R8W  
 La Plata County, CO  
 API #05-067-08714

After

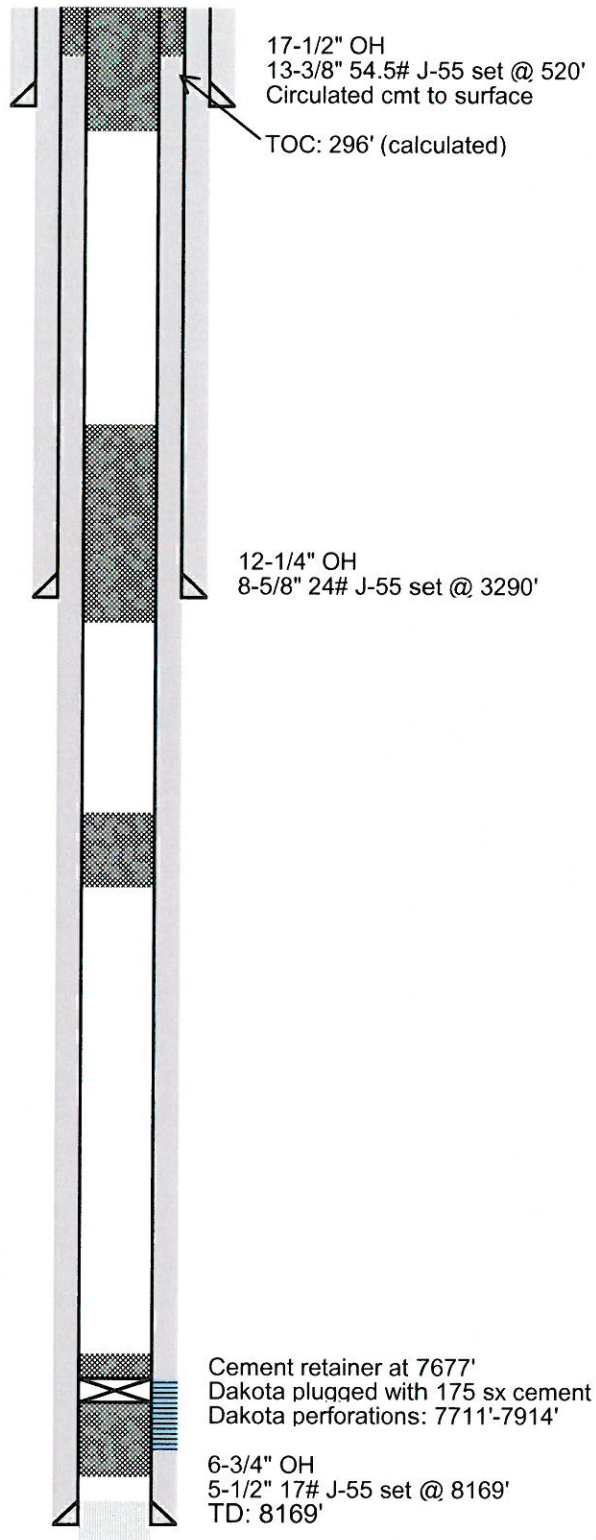
San Jose - surface

Fruitland - 2500'

Pictured Cliffs - 2909'  
 Lewis - 3048'

Mesa Verde - 4715'

Dakota - 7701'



Miller 1A WBD  
 2/2/2015