

T4N, R68W

S 89°37'33" W 5296.62' (M)

NW. COR.
SEC. 26, T4N, R68W
FOUND 2 1/2" ALUM. CAP
L.S. NO. 24305

NE. COR.
SEC. 26, T4N, R68W
FOUND 2 1/2" ALUM. CAP
L.S. NO. 26969

S 86°53'26" W 9430' GRID
S 87°14'14" W TRUE
S 78°39'26" W MAGNETIC

WELL BORE
CONTINUES INTO
SECTION 27

WILSON RANCH
4C-27HZ
SURFACE LOCATION

26

S 89°24'32" W
2659.57' (C)

S 89°24'32" W
2643.55' (C)

SURFACE LOCATION
GROUND ELEVATION= 4951.7'
NAD 83
LATITUDE= 40.289911°
LONGITUDE= -104.963310°

LATITUDE= 40°17'23.680"
LONGITUDE= -104°57'47.917"

BOTTOM HOLE LOCATION
NAD 83
LATITUDE= 40.288658°
LONGITUDE= -104.997076°

LATITUDE= 40°17'19.170"
LONGITUDE= -104°59'49.472"

MATCH LINE
SEE SHEET 2

SW. COR.
SEC. 26, T4N, R68W
FOUND 3 1/4" ALUM. CAP
L.S. NO. 7242

S. 1/4 COR.
SEC. 26, T4N, R68W
FOUND 2 1/2" ALUM. CAP
L.S. NO. 38345

SE. COR.
SEC. 26, T4N, R68W
FOUND 3 1/4" ALUM. CAP
L.S. NO. 12374

S 88°47'05" W 2671.03' (M)

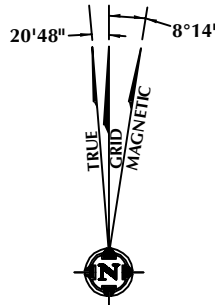
S 89°36'20" W 2638.80' (M)

CERTIFICATE OF SURVEYOR:

THIS IS TO CERTIFY THAT THE ABOVE PLAT WAS PREPARED FROM FIELD NOTES OF ACTUAL SURVEY MADE BY ME OR UNDER MY SUPERVISION AND THAT THE SAME ARE TRUE AND CORRECT TO THE BEST OF MY KNOWLEDGE AND BELIEF. THIS CERTIFICATE DOES NOT REPRESENT A LAND SURVEY PLAT OR IMPROVEMENT SURVEY PLAT AS DEFINED BY C.S. 38-51-102 AND CANNOT BE RELIED UPON TO DETERMINE OWNERSHIP.

Benjamin J. Reenders
BENJAMIN J. REENDERS
PROFESSIONAL LAND SURVEYOR
COLORADO REGISTRATION NUMBER 48365
8/1/14

NOTICE:
ACCORDING TO COLORADO STATE LAW YOU MUST COMMENCE ANY LEGAL ACTION BASED UPON ANY DEFECT IN THIS SURVEY WITHIN THREE YEARS AFTER YOU FIRST DISCOVER SUCH DEFECT. IN NO EVENT MAY ANY ACTION BASED UPON ANY DEFECT IN THIS SURVEY BE COMMENCED MORE THAN TEN YEARS FROM THE DATE ON THE CERTIFICATION SHOWN HEREON.



NOTE:
MAGNETIC NORTH IS CURRENT AS OF 4/25/2014.
MAGNETIC NORTH CHANGES WEST 0°08' PER YEAR.

NOTES:

- ▲ INDICATES FOUND SECTION CORNER
- INDICATES CALCULATED CORNER
- ELEVATION BASED ON NAVD88 (GEOID09)
- BASIS OF BEARING DERIVED FROM COLORADO COORDINATE SYSTEM 1983 NORTH ZONE UNLESS OTHERWISE NOTED.
- ALL MEASURED DISTANCES ARE GRID.
COMBINED SCALE FACTOR: .99971841
- OPERATOR: ROB WILSON / PDOP = 1.2
- SEE ADDENDUM TO WELL LOCATION CERTIFICATE FOR EXISTING IMPROVEMENTS WITHIN 500' OF THE WELL PAD.
- WELL FOOTAGES ARE MEASURED AT RIGHT ANGLES TO THE SECTION LINES.
- THE BOTTOM OF HOLE BEARS S86°53'26"W 9430' FROM THE SURFACE LOCATION.



SCALE: 1" = 1000'

WELL PAD - WILSON RANCH 4N-27HZ

WILSON RANCH 4C-27HZ
WELL LOCATION CERTIFICATE
727' FNL & 722' FEL NENE (SURFACE)
LOCATED IN SECTION 26
1070' FNL & 460' FWL NWNW (BOTTOM)
LOCATED IN SECTION 27
T4N, R68W, 6TH P.M.
WELD COUNTY, COLORADO

Kerr-McGee Oil &
Gas Onshore L.P.
1099 18th Street
Denver, Colorado 80202



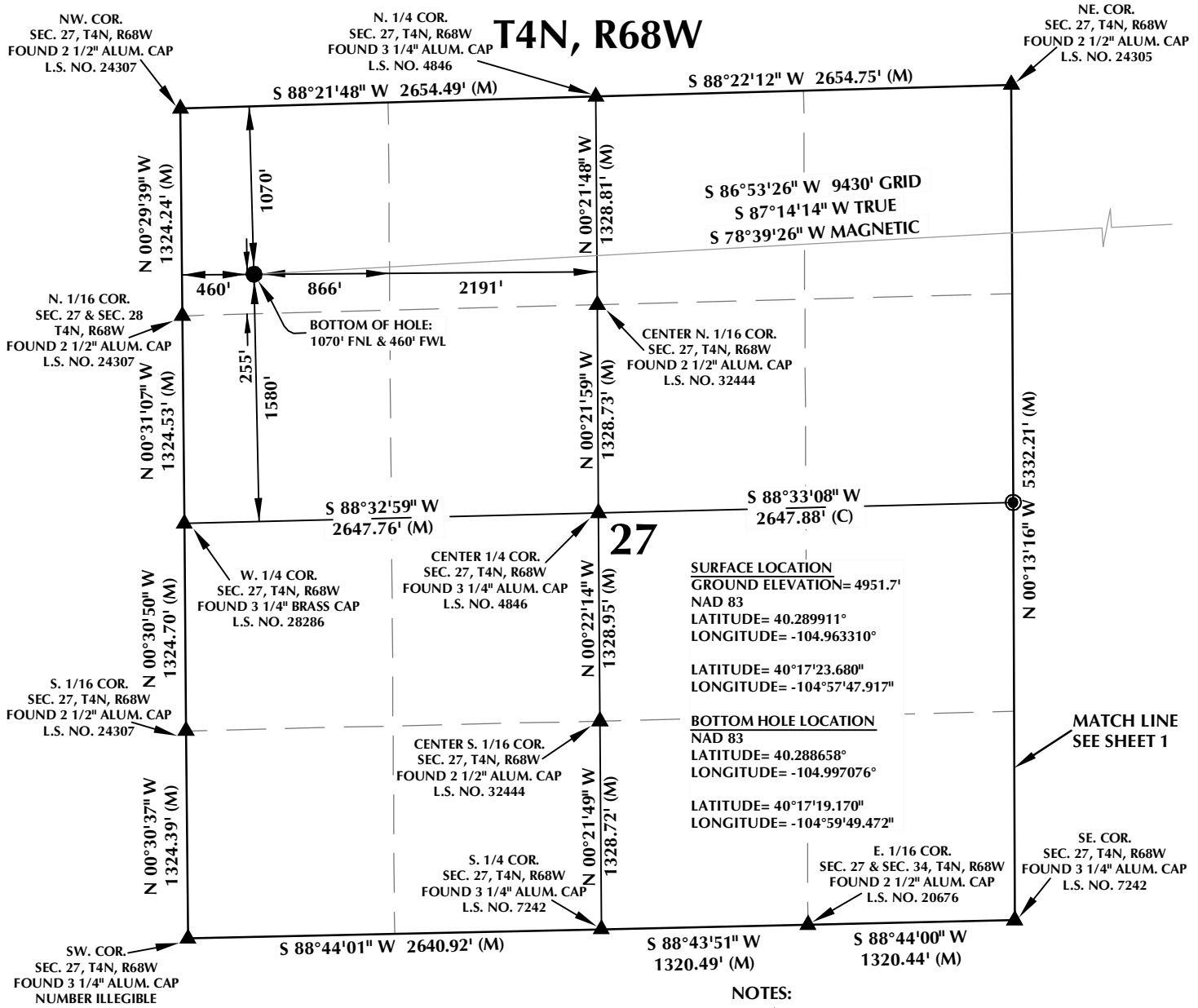
CONSULTING, LLC

SHERIDAN OFFICE
2155 North Main Street
Sheridan, Wyoming 82801
Phone 307-674-0609

LOVELAND OFFICE
1635 Foxtrail Drive, Suite 204
Loveland, Colorado 80538
Phone 970-776-4331

DRAFTED BY:	LMO	CHECKED BY:	BJR	SHEET NO:
DATE DRAFTED:	5/1/14	DATE SURVEYED:	4/23/14	1
REVISED:		FILE NAME:	14-19	1 OF 2

K:\JANADARKO\2014\10-14-19_COLORADO_T4N_R68W_SEC_26_&_SEC_27\PLATS\WILSON RANCH 4N-27HZ.dwg, 5/22/2014 10:04:06 AM, lbr

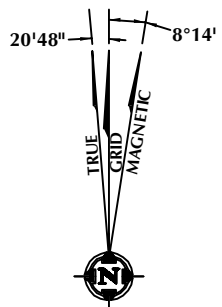


CERTIFICATE OF SURVEYOR:

THIS IS TO CERTIFY THAT THE ABOVE PLAT WAS PREPARED FROM FIELD NOTES OF ACTUAL SURVEY MADE BY ME OR UNDER MY SUPERVISION AND THAT THE SAME ARE TRUE AND CORRECT TO THE BEST OF MY KNOWLEDGE AND BELIEF. THIS CERTIFICATE DOES NOT REPRESENT A LAND SURVEY PLAT OR IMPROVEMENT SURVEY PLAT AS DEFINED BY C.S. 38-51-102 AND CANNOT BE RELIED UPON TO DETERMINE OWNERSHIP.

Benjamin J. Reenders
BENJAMIN J. REENDERS
PROFESSIONAL LAND SURVEYOR
COLORADO REGISTRATION NUMBER 48305

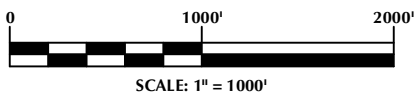
NOTICE:
ACCORDING TO COLORADO STATE LAW YOU MUST COMMENCE ANY LEGAL ACTION BASED UPON ANY DEFECT IN THIS SURVEY WITHIN THREE YEARS AFTER YOU FIRST DISCOVER SUCH DEFECT. IN NO EVENT MAY ANY ACTION BASED UPON ANY DEFECT IN THIS SURVEY BE COMMENCED MORE THAN TEN YEARS FROM THE DATE ON THE CERTIFICATION SHOWN HEREON.



NOTE:
MAGNETIC NORTH IS CURRENT AS OF 4/25/2014.
MAGNETIC NORTH CHANGES WEST 0°08' PER YEAR.

NOTES:

- ▲ INDICATES FOUND SECTION CORNER
- INDICATES CALCULATED CORNER
- ELEVATION BASED ON NAVD88 (GEOID09)
- BASIS OF BEARING DERIVED FROM COLORADO COORDINATE SYSTEM 1983 NORTH ZONE UNLESS OTHERWISE NOTED.
- ALL MEASURED DISTANCES ARE GRID.
COMBINED SCALE FACTOR: .99971841
- OPERATOR: ROB WILSON / PDOP = 1.2
- SEE ADDENDUM TO WELL LOCATION CERTIFICATE FOR EXISTING IMPROVEMENTS WITHIN 500' OF THE WELL PAD.
- WELL FOOTAGES ARE MEASURED AT RIGHT ANGLES TO THE SECTION LINES.
- THE BOTTOM OF HOLE BEARS S86°53'26"W 9430' FROM THE SURFACE LOCATION.



WELL PAD - WILSON RANCH 4N-27HZ

WILSON RANCH 4C-27HZ
WELL LOCATION CERTIFICATE
727' FNL & 722' FEL NENE (SURFACE)
LOCATED IN SECTION 26
1070' FNL & 460' FWL NWNW (BOTTOM)
LOCATED IN SECTION 27
T4N, R68W, 6TH P.M.
WELD COUNTY, COLORADO

**Kerr-McGee Oil &
Gas Onshore L.P.**
1099 18th Street
Denver, Colorado 80202



CONSULTING, LLC

SHERIDAN OFFICE
2155 North Main Street
Sheridan, Wyoming 82801
Phone 307-674-0609

LOVELAND OFFICE
1635 Foxtrail Drive, Suite 204
Loveland, Colorado 80538
Phone 970-776-4331

DRAFTED BY:	LMO	CHECKED BY:	BJR	SHEET NO:
DATE DRAFTED:	5/1/14	DATE SURVEYED:	4/23/14	2
REVISED:		FILE NAME:	14-19	2 OF 2