

RADIAL CEMENT BOND LOG
GAMMA RAY
CCL

Company		Kerr McGee Oil & Gas					
Well		BERIG UPRR 42-35 #1					
Field		Wattenberg					
County		Weld					
State		CO					
Location:		API # : 05-123-12700					
SE/NE		Other Services					
LAT: 40.27030 LONG: -104.73750							
SEC 35 TWP 4N RGE 66W							
Permanent Datum		GL	Elevation 4806'				
Log Measured From		KB: 10'	K.B. 4816'				
Drilling Measured From		KB	D.F. 4815'				
			G.L. 4806'				
Date	12-16-2014						
Run Number	ONE						
Depth Driller	7386'						
Depth Logger	1750'						
Bottom Logged Interval	1747'						
Top Log Interval	Surface						
Open Hole Size	7 7/8						
Type Fluid	WATER						
Density / Viscosity	1.0						
Max. Recorded Temp.	95						
Estimated Cement Top	ABOVE 100'						
Time Well Ready	NA						
Time Logger on Bottom	NA						
Equipment Number	7770						
Location	GREELEY						
Recorded By	A.STEERMAN						
Witnessed By	SOCORRO						
Borehole Record		Tubing Record					
Run Number	Bit	From	To	Size	Weight	From	To
Casing Record	Size	Wgt/Ft	Top	Bottom			
Surface String	8 5/8	24#	0	342'			
Prot. String							
Production String	4 1/2	11.6#	0	7385'			
Liner							

<<< Fold Here >>>

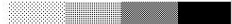

All interpretations are opinions based on inferences from electrical or other measurements and we cannot and do not guarantee the accuracy or correctness of any interpretation, and we shall not, except in the case of gross or willful negligence on our part, be liable or responsible for any loss, costs, damages, or expenses incurred or sustained by anyone resulting from any interpretation made by any of our officers, agents or employees. These interpretations are also subject to our general terms and conditions set out in our current Price Schedule.

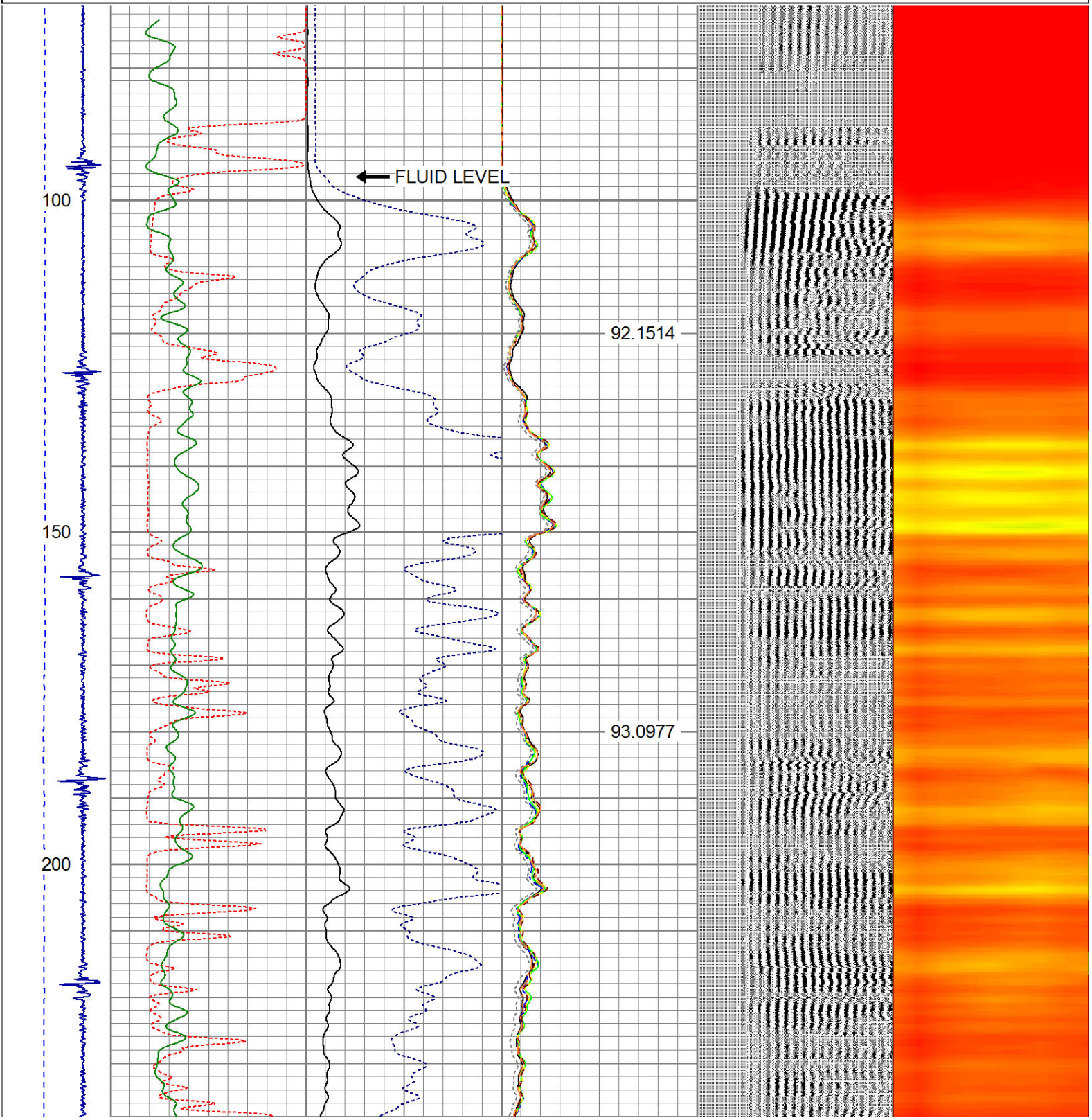
Comments

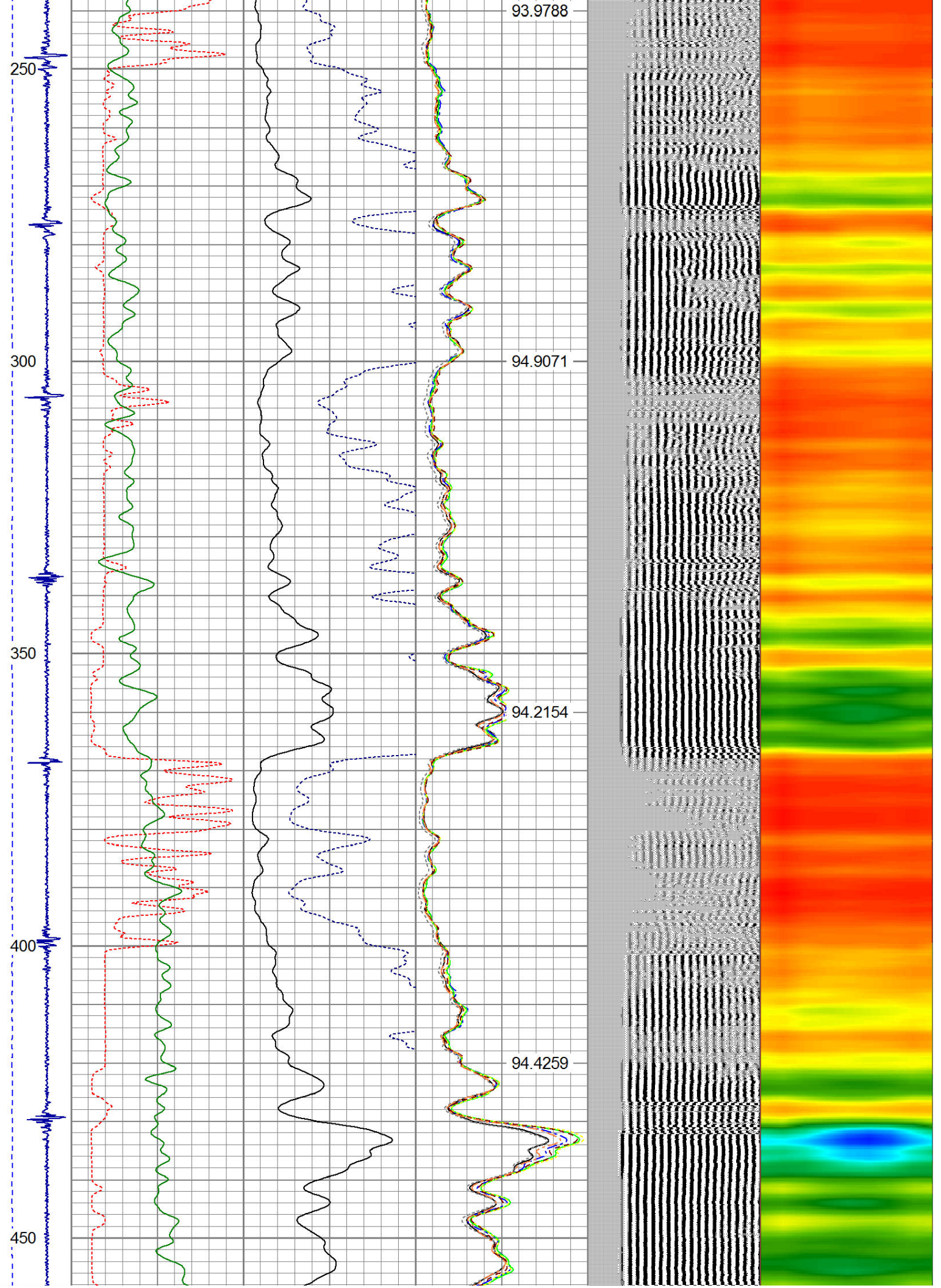
NOT CORROLATED
RAN CBL TO VERIFY CEMENT.

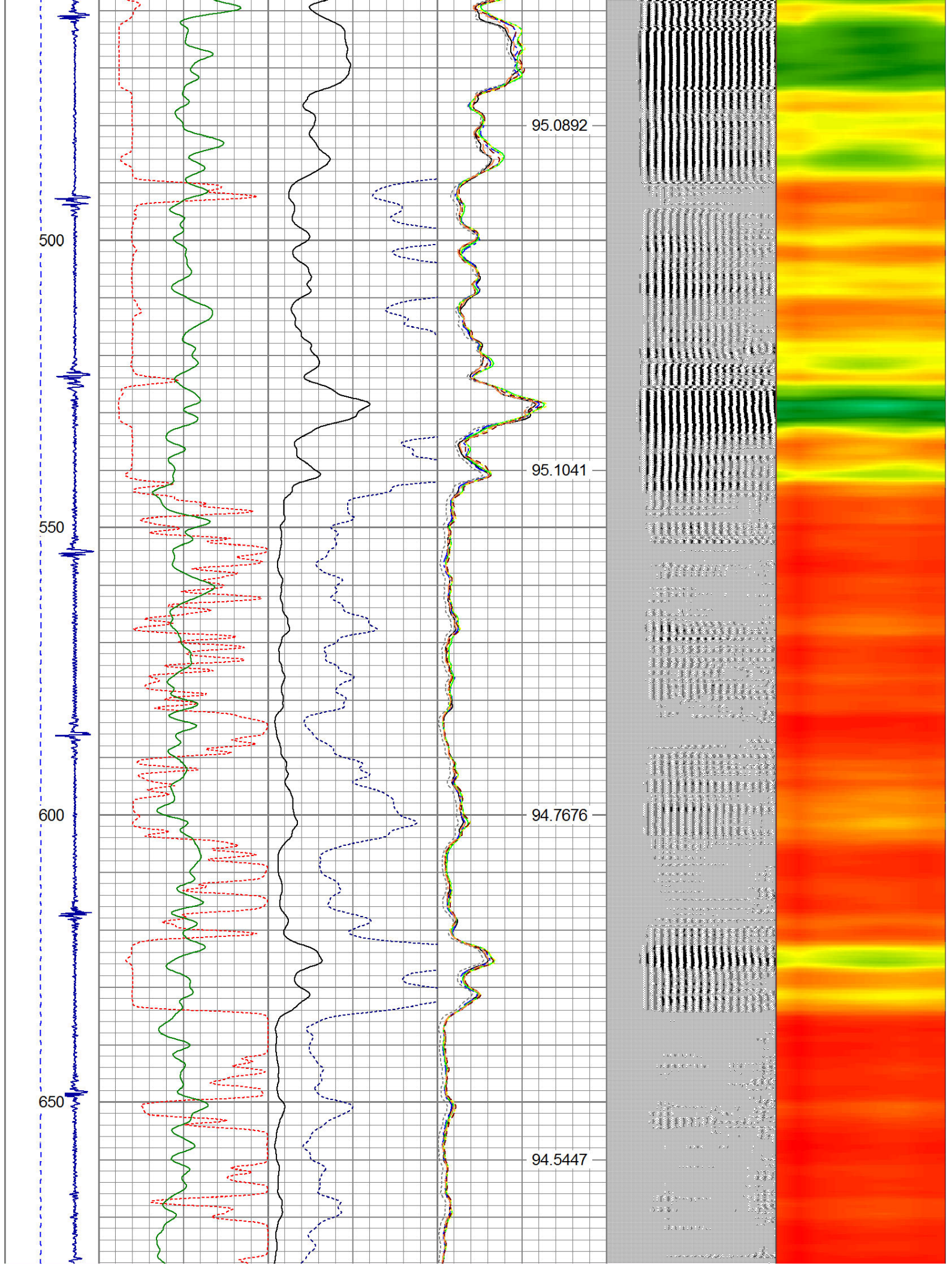
THANK YOU FOR USING WARRIOR ENERGY!

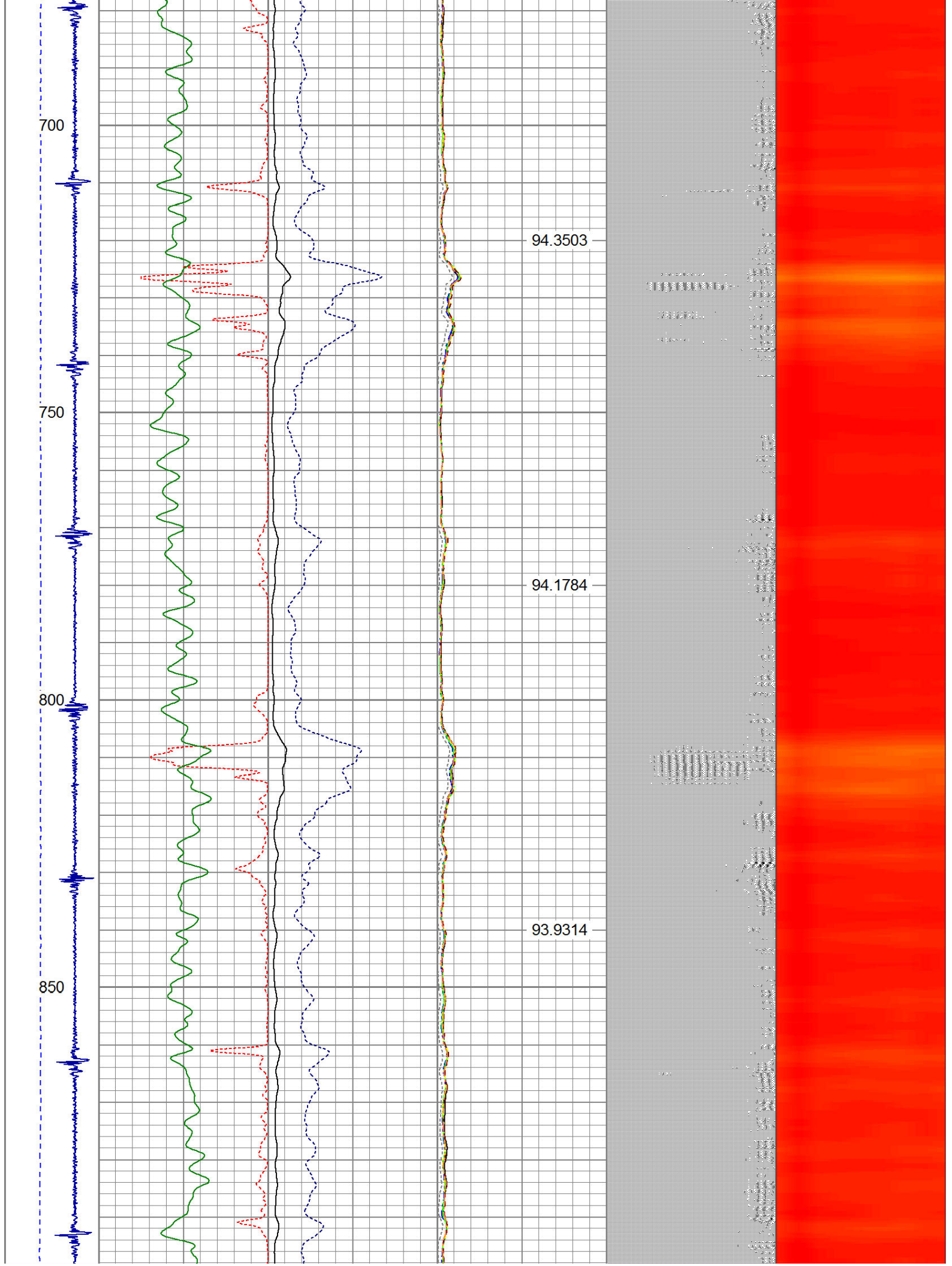
Sensor	Offset (ft)	Schematic	Description	Len (ft)	OD (in)	Wt (lb)

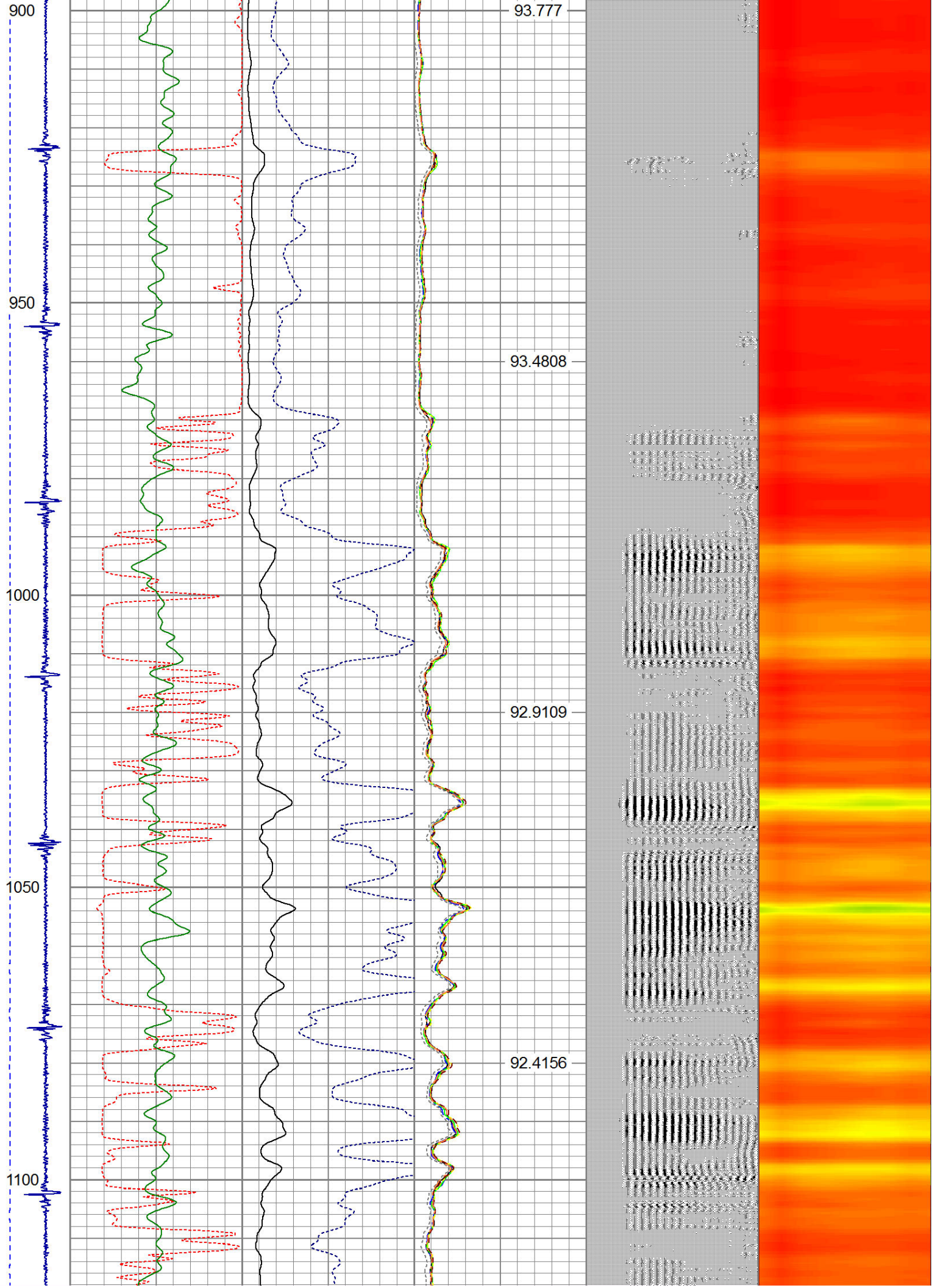
Dataset Creation:		Thu Dec 18 07:26:04 2014 by Log Std Casedhole 09061																											
Charted by:		Depth in Feet scaled 1:240																											
-9	CCL	3	200	TT (usec)	800	0	AMP (mV)	100	0	AMPS1	100	200	VDL	1200	1	Cement Map	8												
LSPD (ft/min)	0	-250	0	GR (GAPI)	200	0	AMPx5 (mV)	20	0	AMPS2	100			1			100												
			200	GR (GAPI)	400				0	AMPS4	100																		
									0	AMPS5	100																		
									0	AMPS6	100																		
									0	AMPS7	100																		
									0	AMPS8	100																		
										IntTemp																			
										(degF)																			

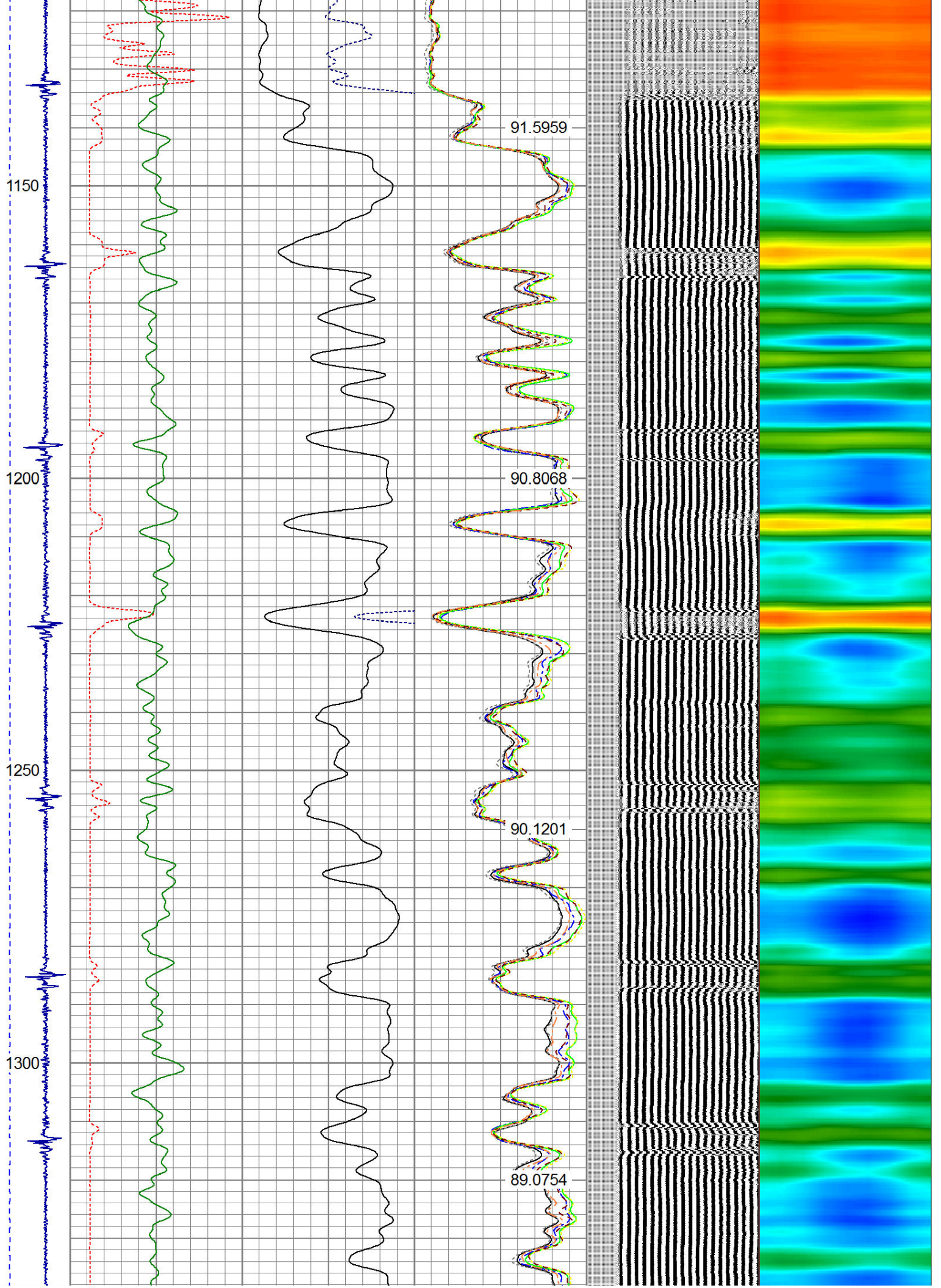


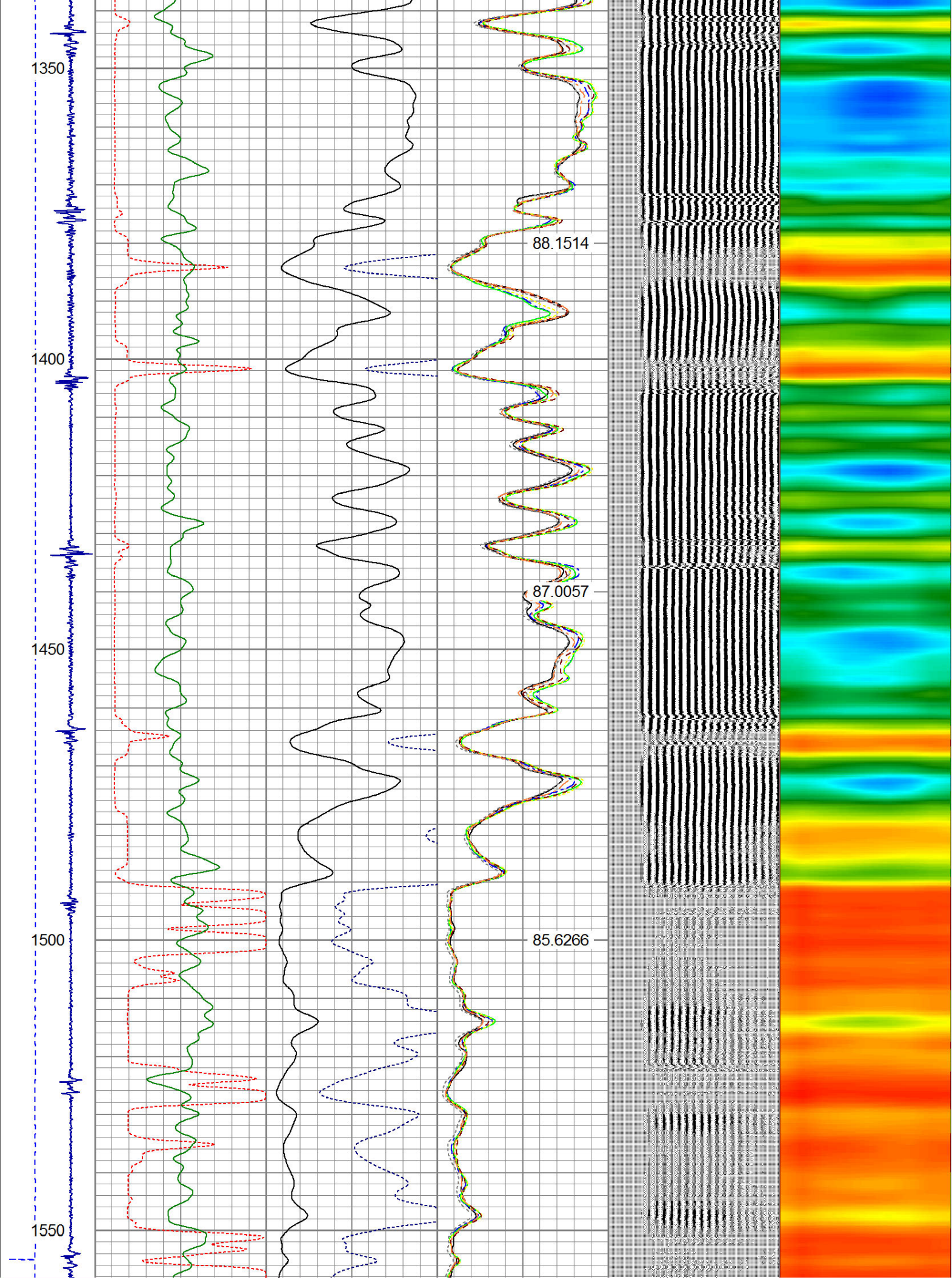


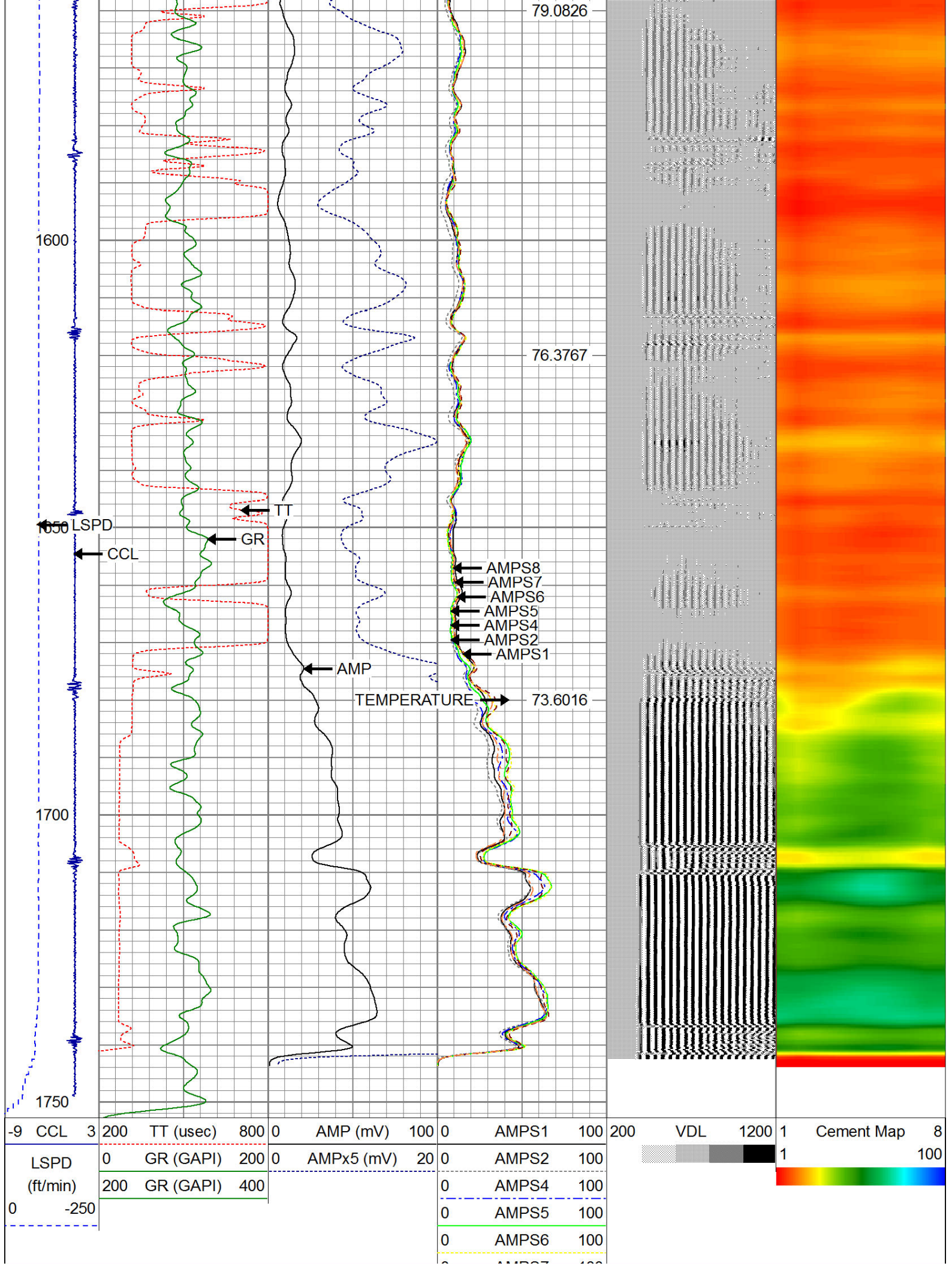












-9	CCL	3	200	TT (uS)	800	0	AMP (mV)	100	0	AMPS1	100	200	VDL	1200	1	Cement Map	8
LSPD	0	GR (GAPI)	200	0	AMPx5 (mV)	20	0	AMPS2	100						1		100
(ft/min)	200	GR (GAPI)	400					0	AMPS4	100							
0	-250							0	AMPS5	100							
								0	AMPS6	100							
								0	AMPS7	100							
								0	AMPS8	100							

0	AMPS7	100
0	AMPS8	100

IntTemp (degF)



WARRIOR
ENERGY SERVICES

Company	Kerr McGee Oil & Gas
Well	BERIG UPRR 42-35 #1
Field	Wattenberg
County	Weld
State	CO