



LEAM Drilling Systems

2027A Airport Rd
Conroe, TX 77301**ND-140853**

5":100' - MD

7/21/2014 5:49:48 PM

Oper. Company: Whiting Oil and Gas**Country:** USA**State / Province:** Colorado**County / Parish:** Weld**Started:****API/UWI:** 05-0123-39201-00**Field:** Wildcat**Well:** Horsetail 30F-3107**Rig:** Xtreme 18**Ended:****Personnel****Day Hand:** Noel Dalbey**Night Hand:** James Hearn**Comp. Emp:****Location****Latitude:** 40° 48' 37.958 N**Longitude:** 103° 47' 45.712 W**Elev. GL:** 4780**Elev. DF:** 4797**Elev. KB:** 17**Hole Data**

Size	From	To
13 1/2	0	1630
8 3/4	1630	5990
6 1/8	5990	13071

Casing Data

Size	From	To
13 1/2	0	1610
7	1610	5973
4 1/2	5873	13061

Bit Sizes

Size	From	To
13 1/2	0	1630
8 3/4	1630	5990
6 1/8	5990	13071

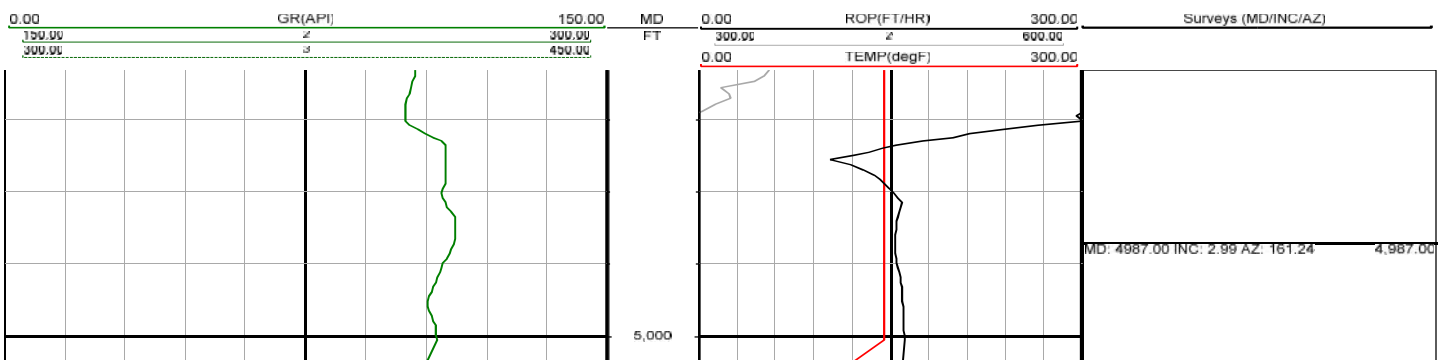
Mud Data

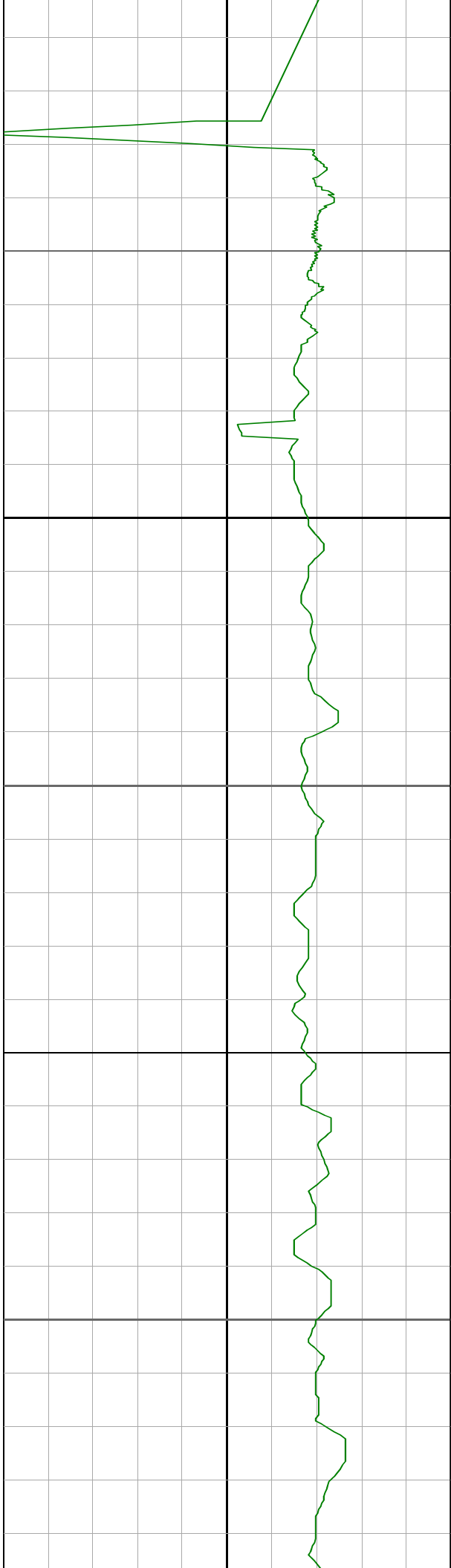
Type	Weight	Density	Viscosity	Rm	Rmf	Rmc	From	To
WBM	10						0	0

Tool Run Data

Serial Number	Gamma Offset	Resist. Offset	Start Time	Start Depth	End Time	End Depth
DG137	40	0	7/2/2014 6:30:25 AM	4874	7/5/2014 4:45:25 AM	5990
DG137	42	0	7/16/2014 6:30:52 PM	5990	7/19/2014 5:30:52 AM	10697
DG120	42	0	7/19/2014 6:35:07 AM	10697	7/21/2014 2:15:07 PM	10371

All interpretations are opinions based on inferences from electrical or other measurements and we cannot and do not guarantee the accuracy or correctness of any interpretation, and we shall not except in the case of gross or willful negligence on our part, be liable or responsible for any loss, cost damages or expenses incurred or sustained by anyone resulting from an interpretation made by any of our officers, agents, or employees.





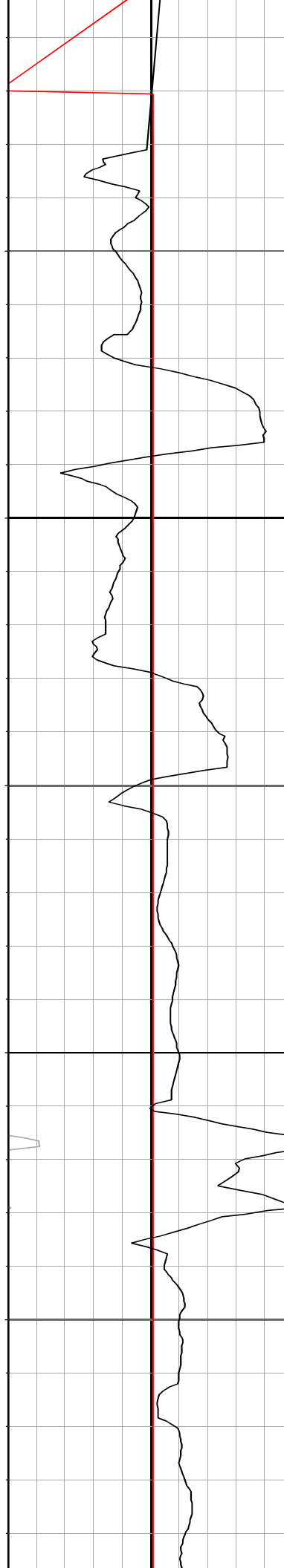
5,050

5,100

5,150

5,200

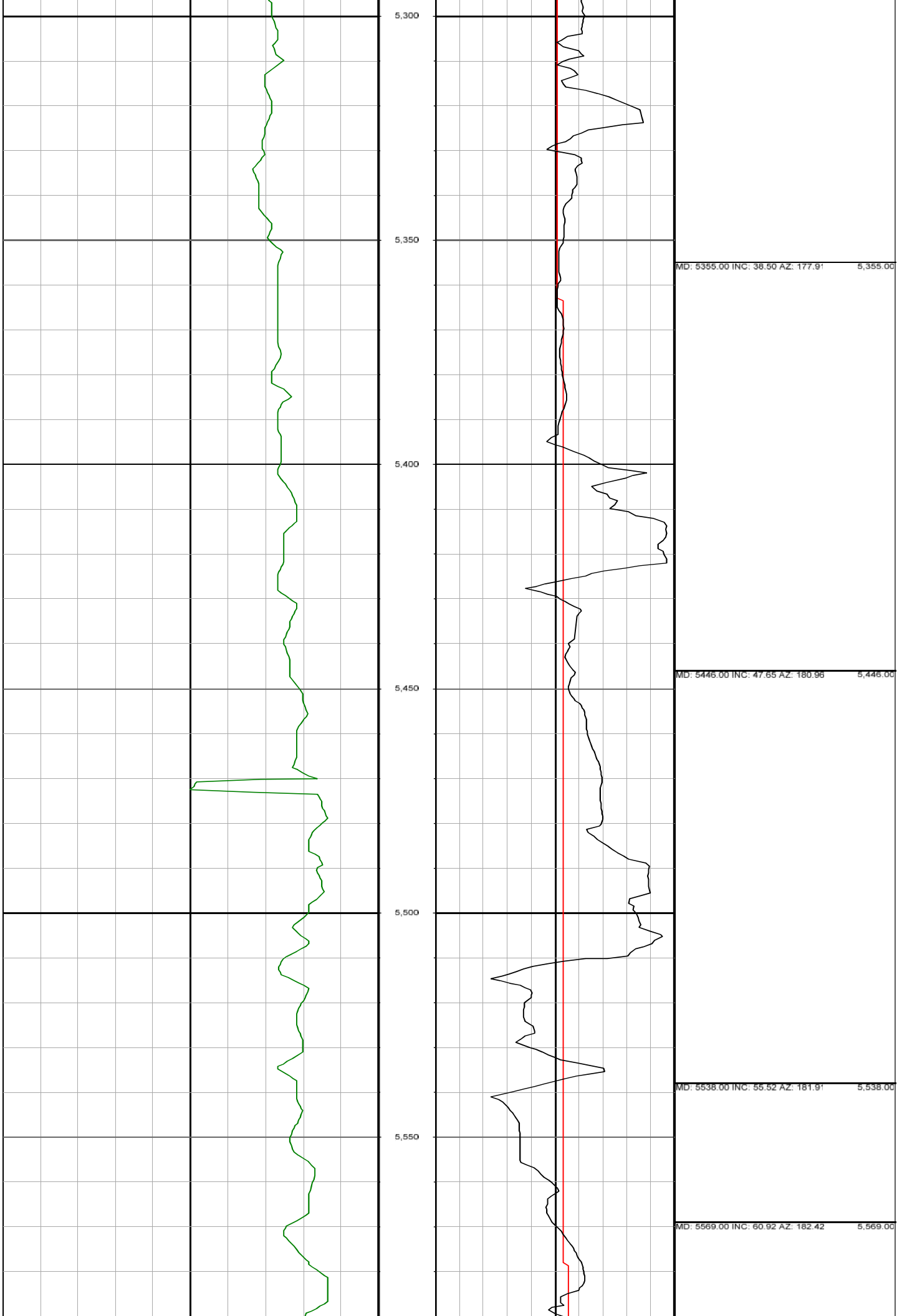
5,250

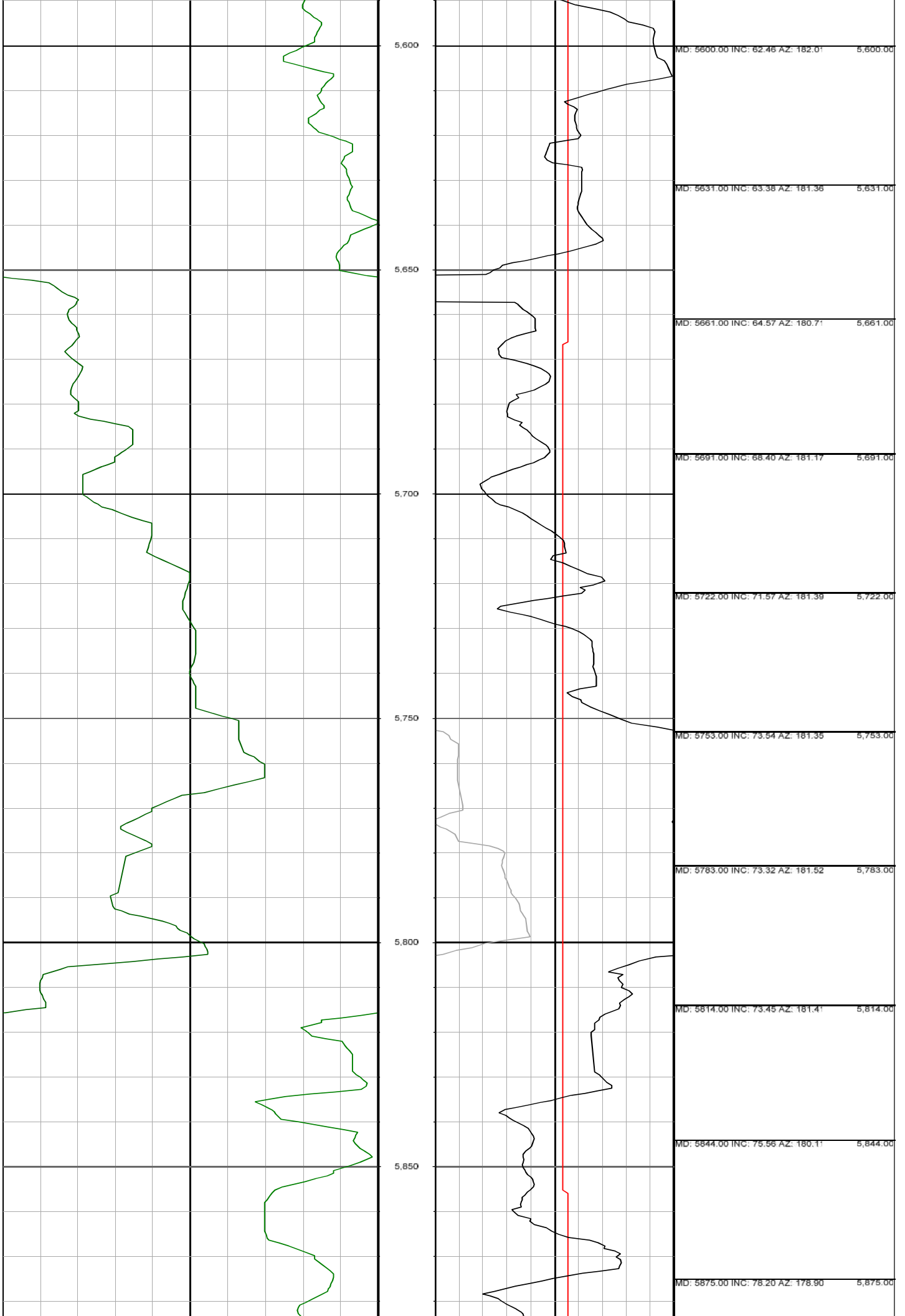


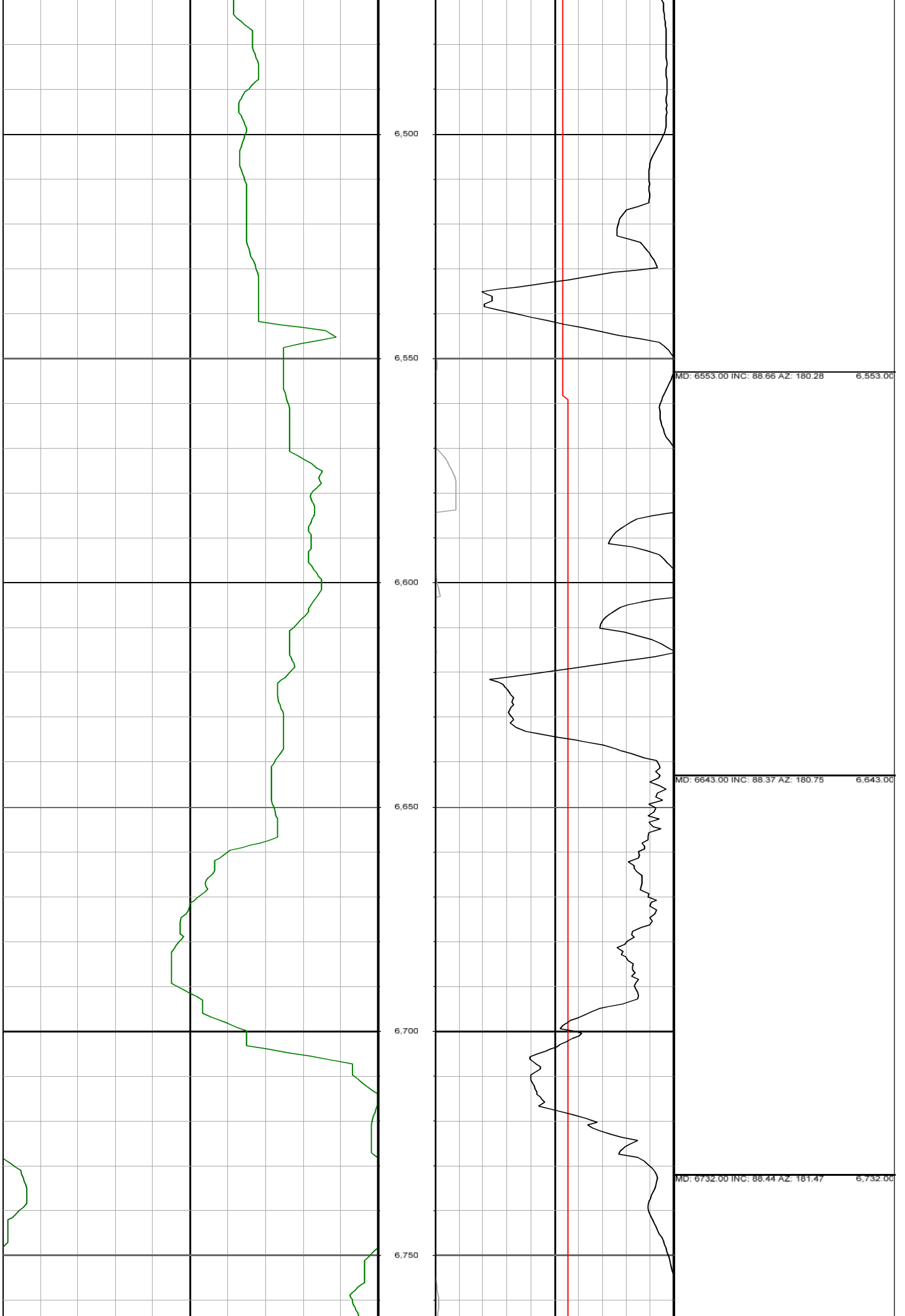
MD: 5078.00 INC: 12.97 AZ: 177.72 5,078.00

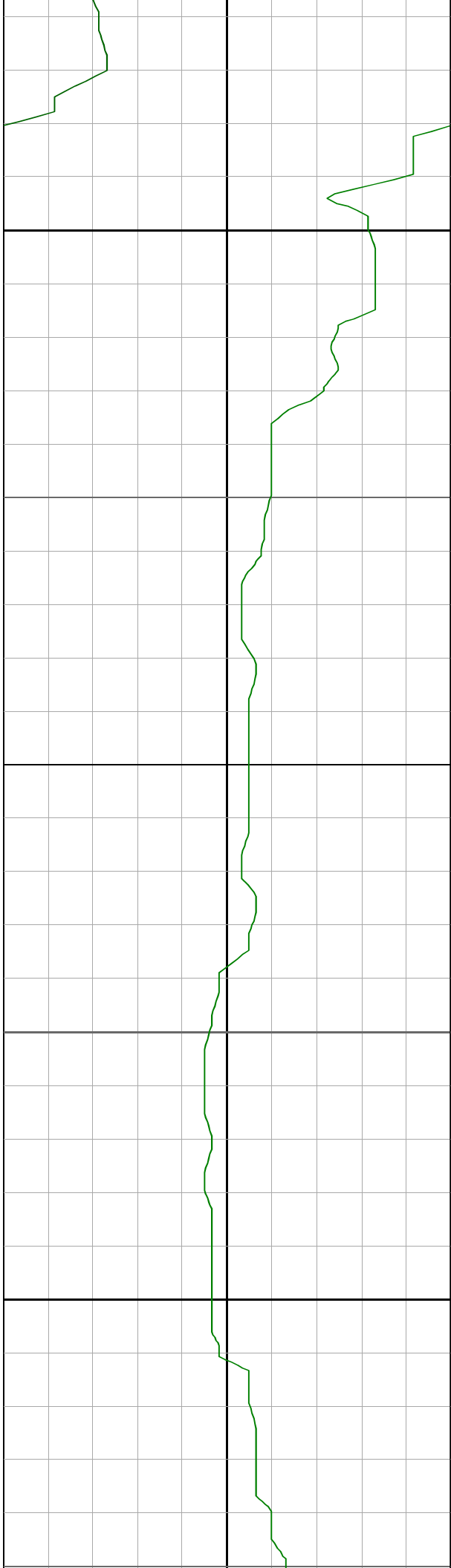
MD: 5170.00 INC: 19.96 AZ: 180.38 5,170.00

MD: 5263.00 INC: 29.01 AZ: 182.83 5,263.00









7,100

7,150

7,200

7,250

7,300

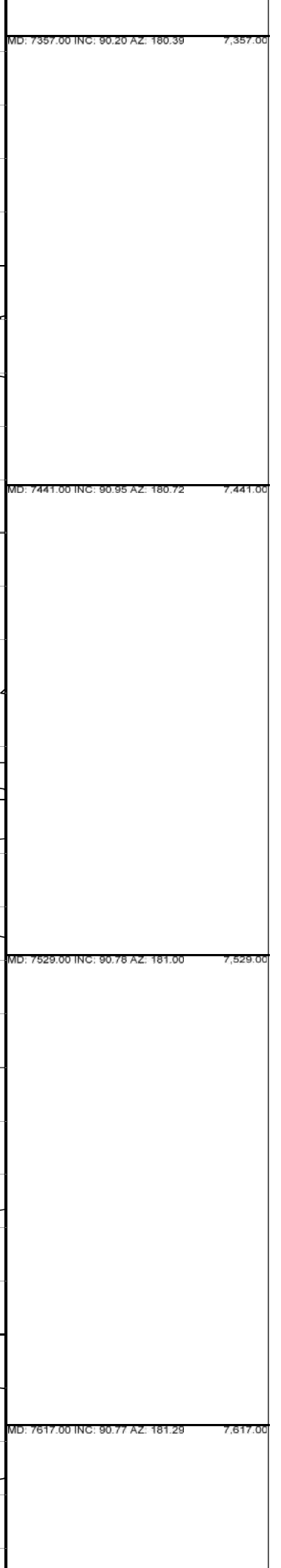
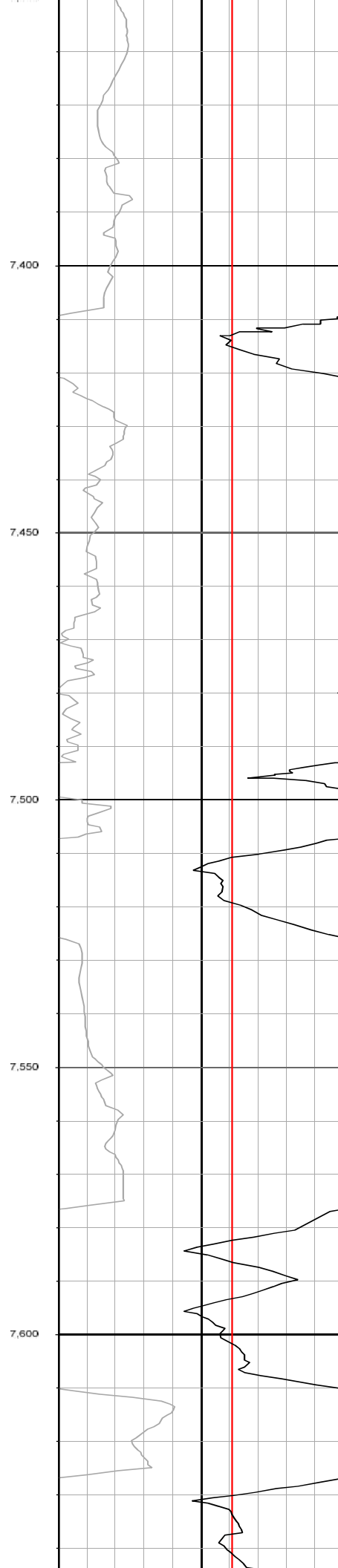
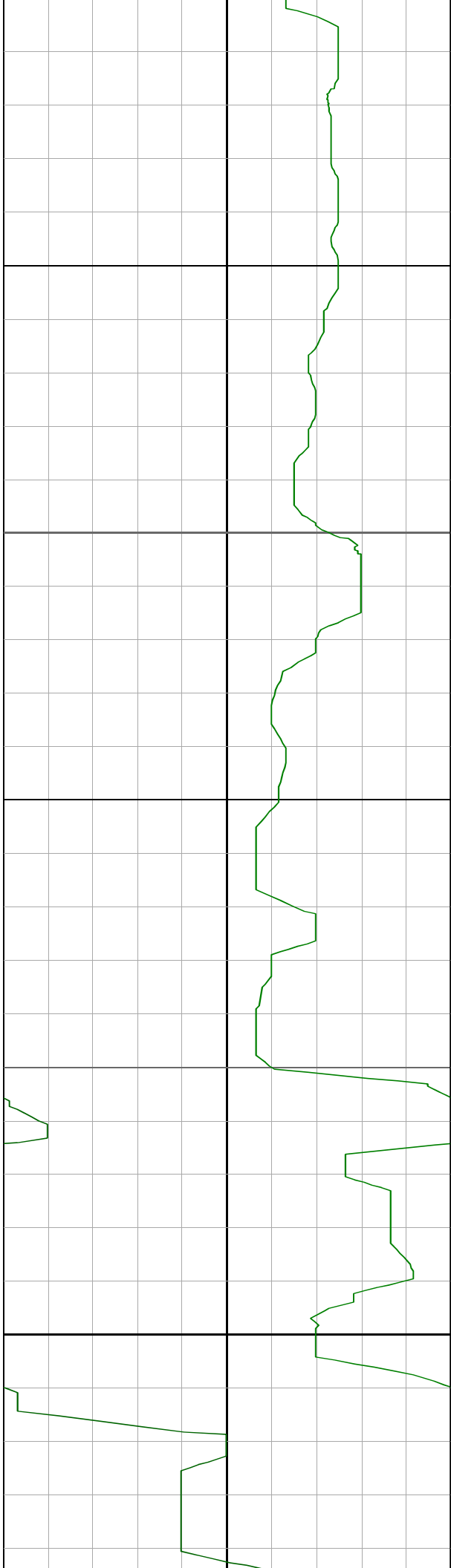
7,350



MD: 7090.00 INC: 88.00 AZ: 180.54 7,090.00

MD: 7180.00 INC: 88.54 AZ: 178.70 7,180.00

MD: 7270.00 INC: 90.21 AZ: 180.92 7,270.00

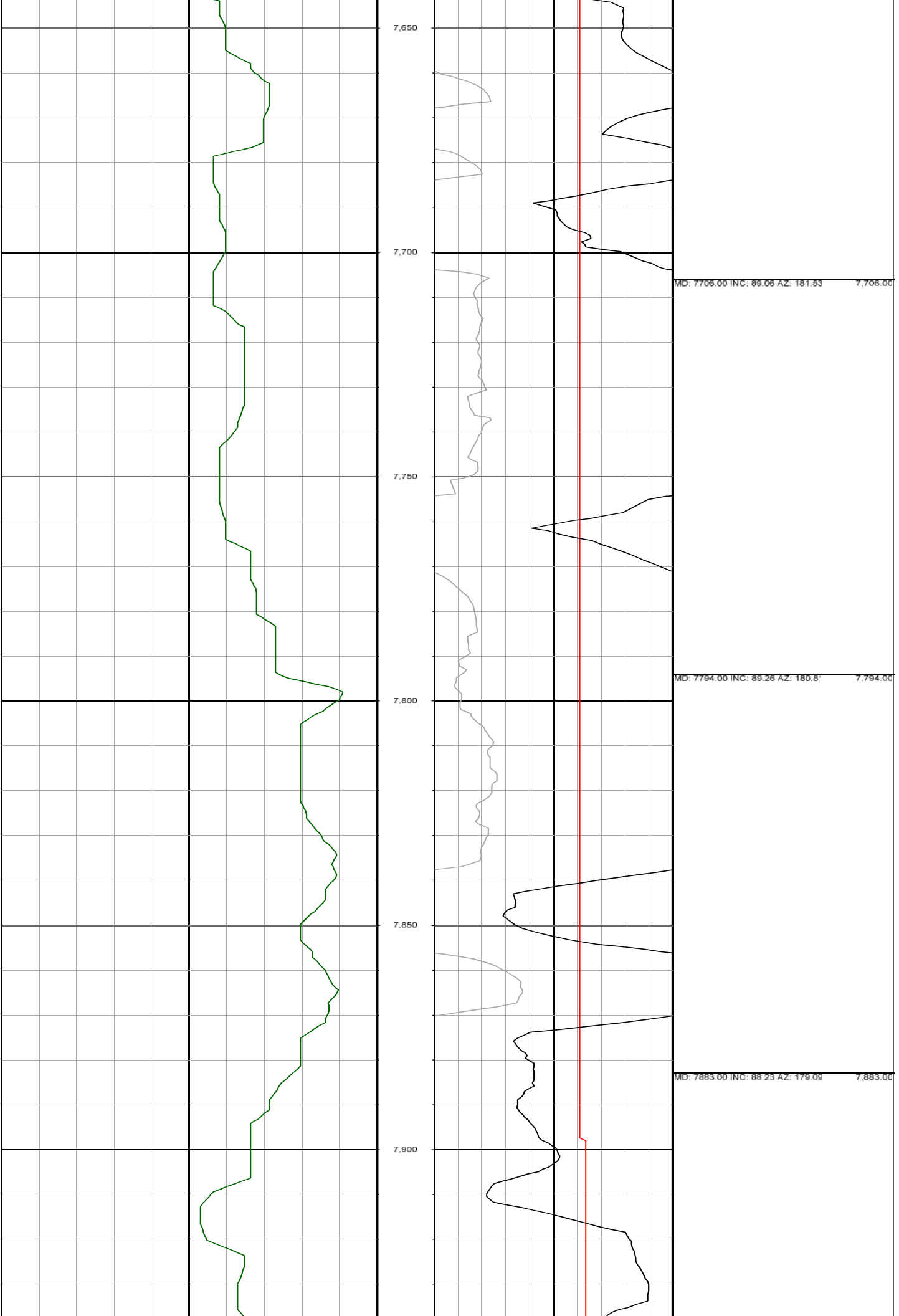


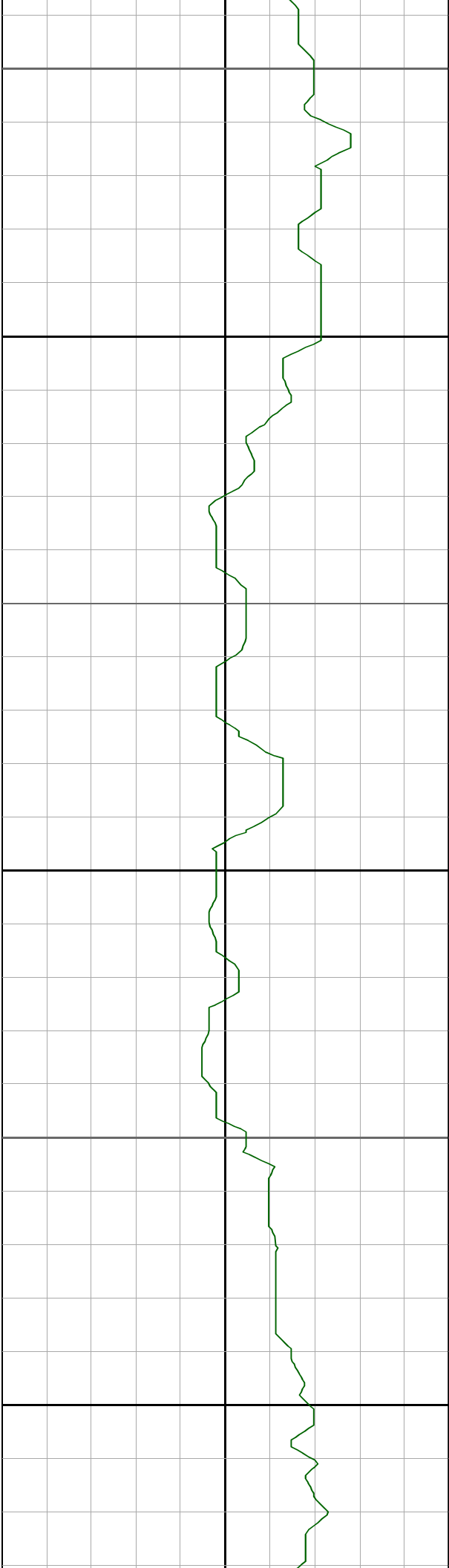
MD: 7357.00 INC: 90.20 AZ: 180.39 7,357.00

MD: 7441.00 INC: 90.95 AZ: 180.72 7,441.00

MD: 7529.00 INC: 90.78 AZ: 181.00 7,529.00

MD: 7617.00 INC: 90.77 AZ: 181.29 7,617.00





7,950

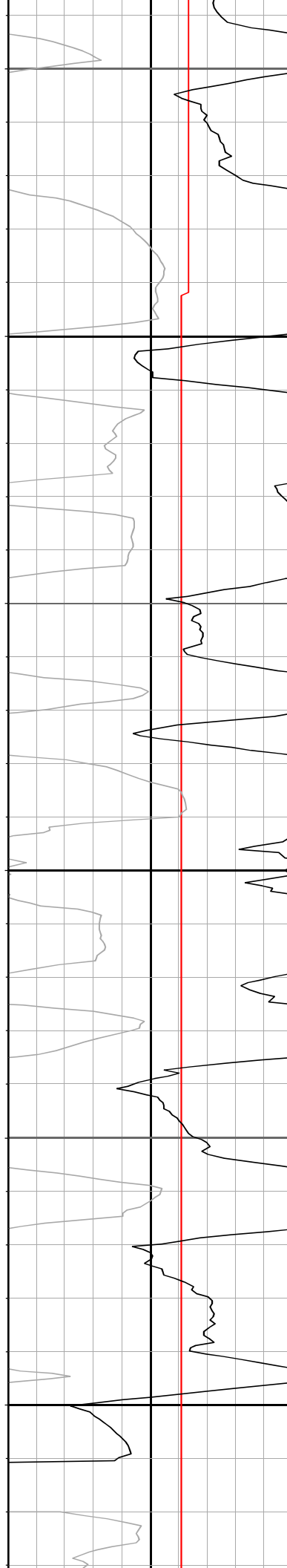
8,000

8,050

8,100

8,150

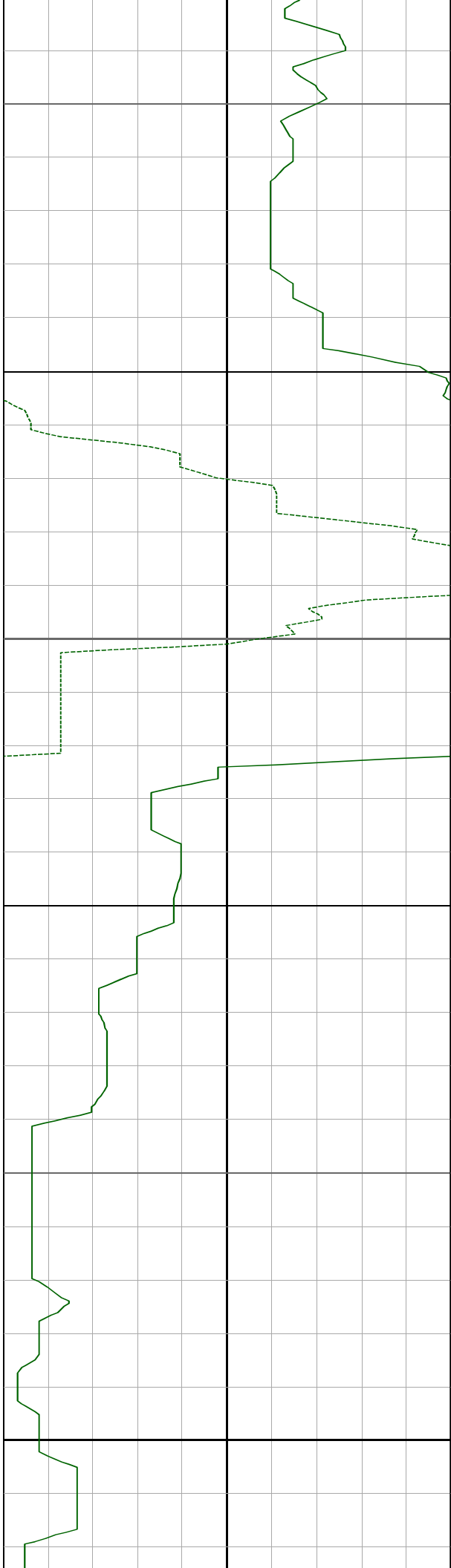
8,200



MD: 7976.00 INC: 88.71 AZ: 179.66 7,976.00

MD: 8068.00 INC: 88.59 AZ: 179.38 8,068.00

MD: 8161.00 INC: 89.14 AZ: 178.27 8,161.00



8,250

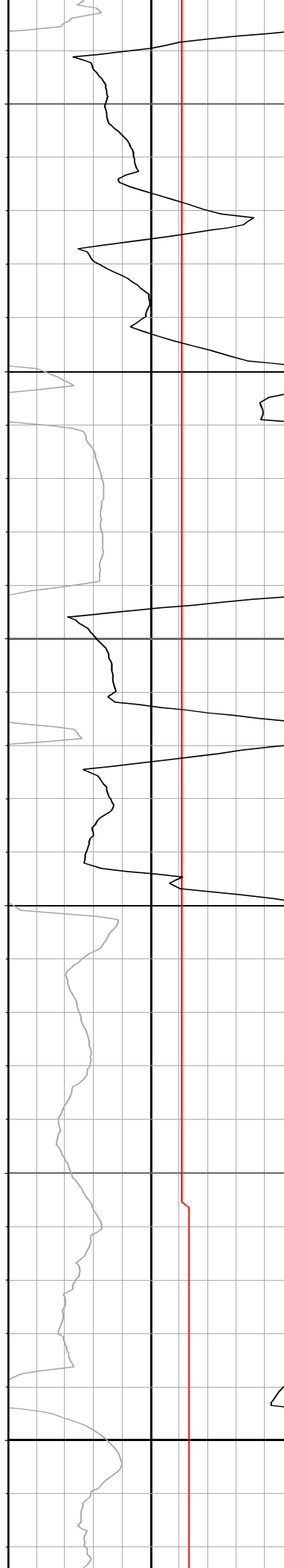
8,300

8,350

8,400

8,450

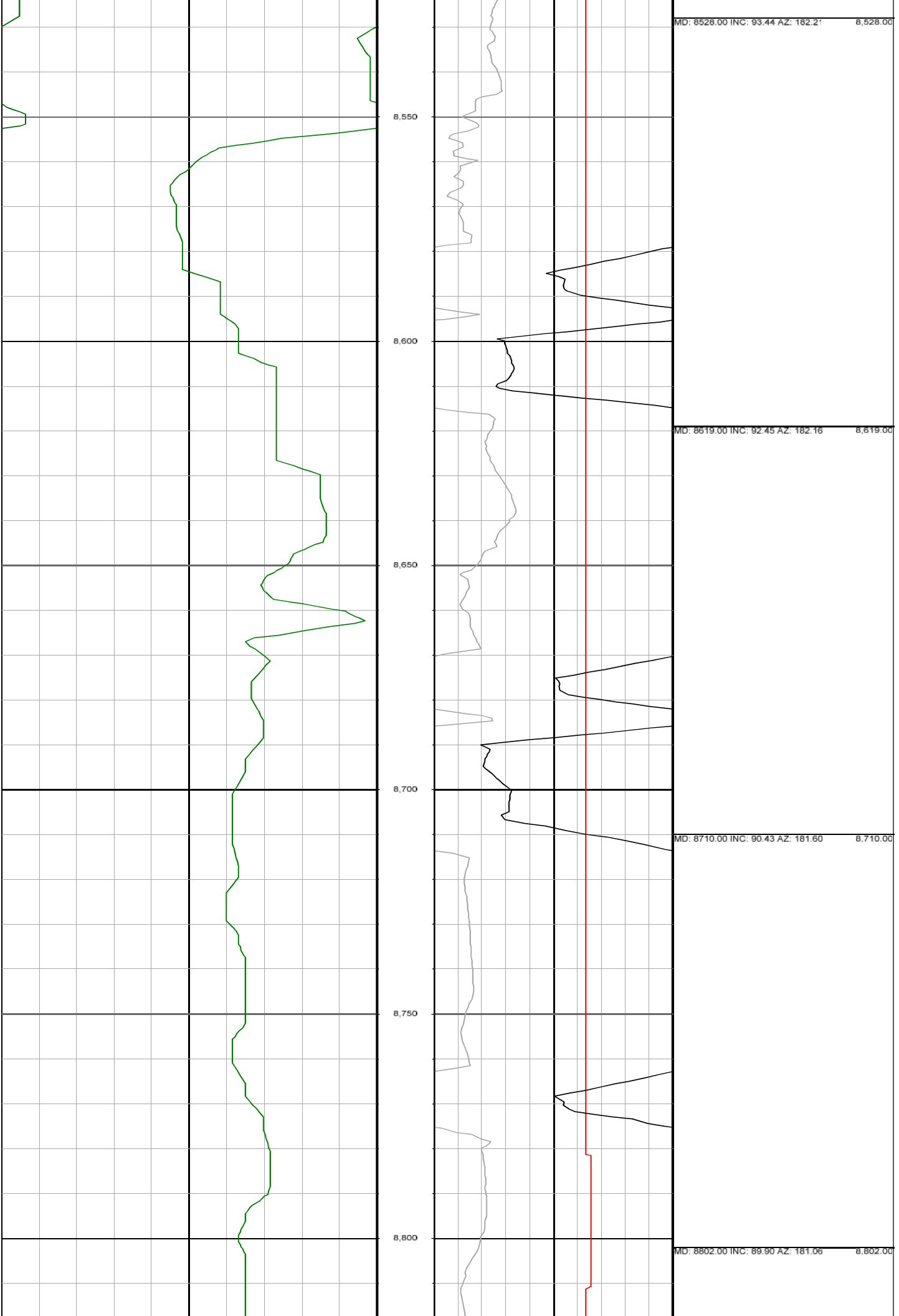
8,500

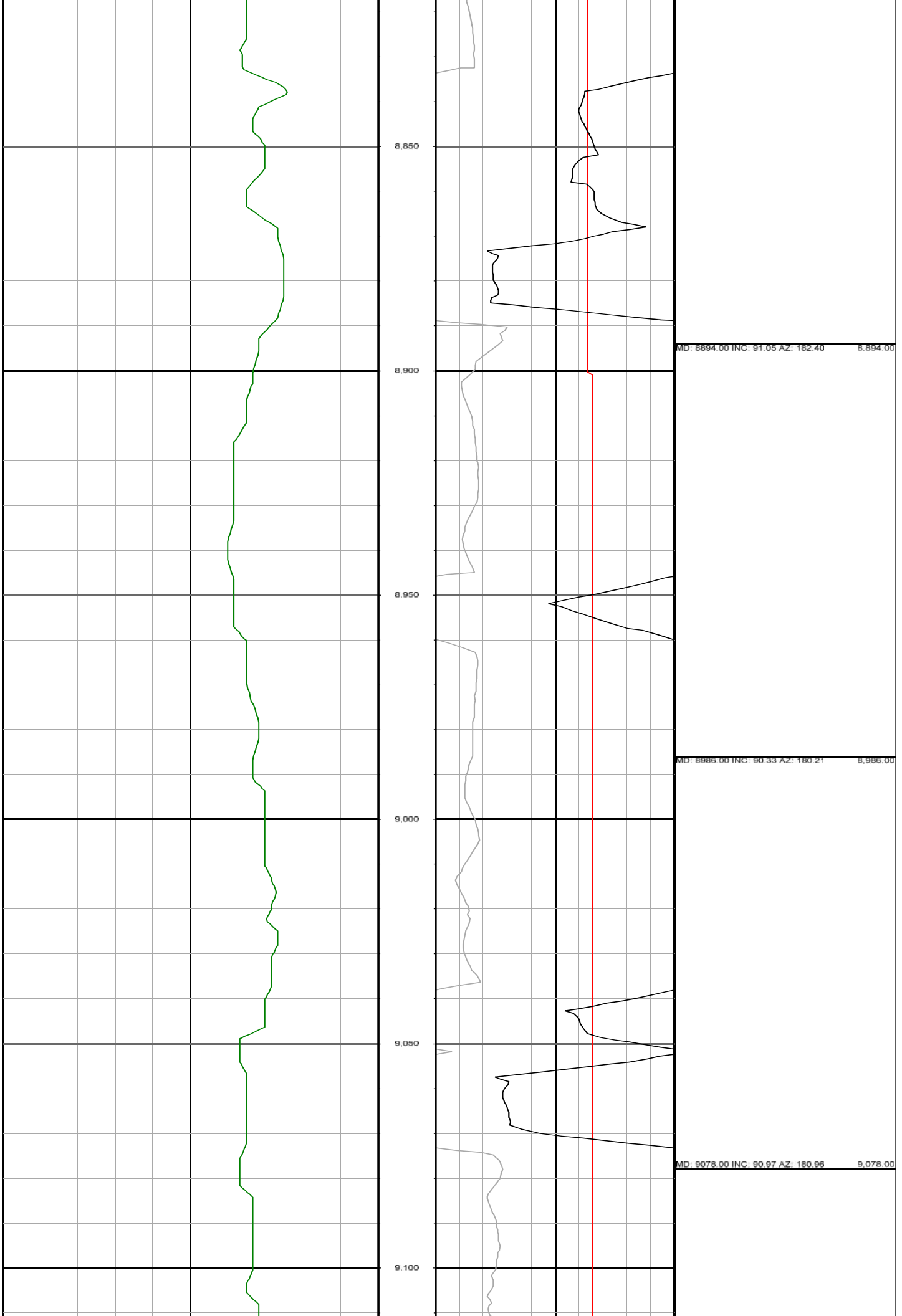


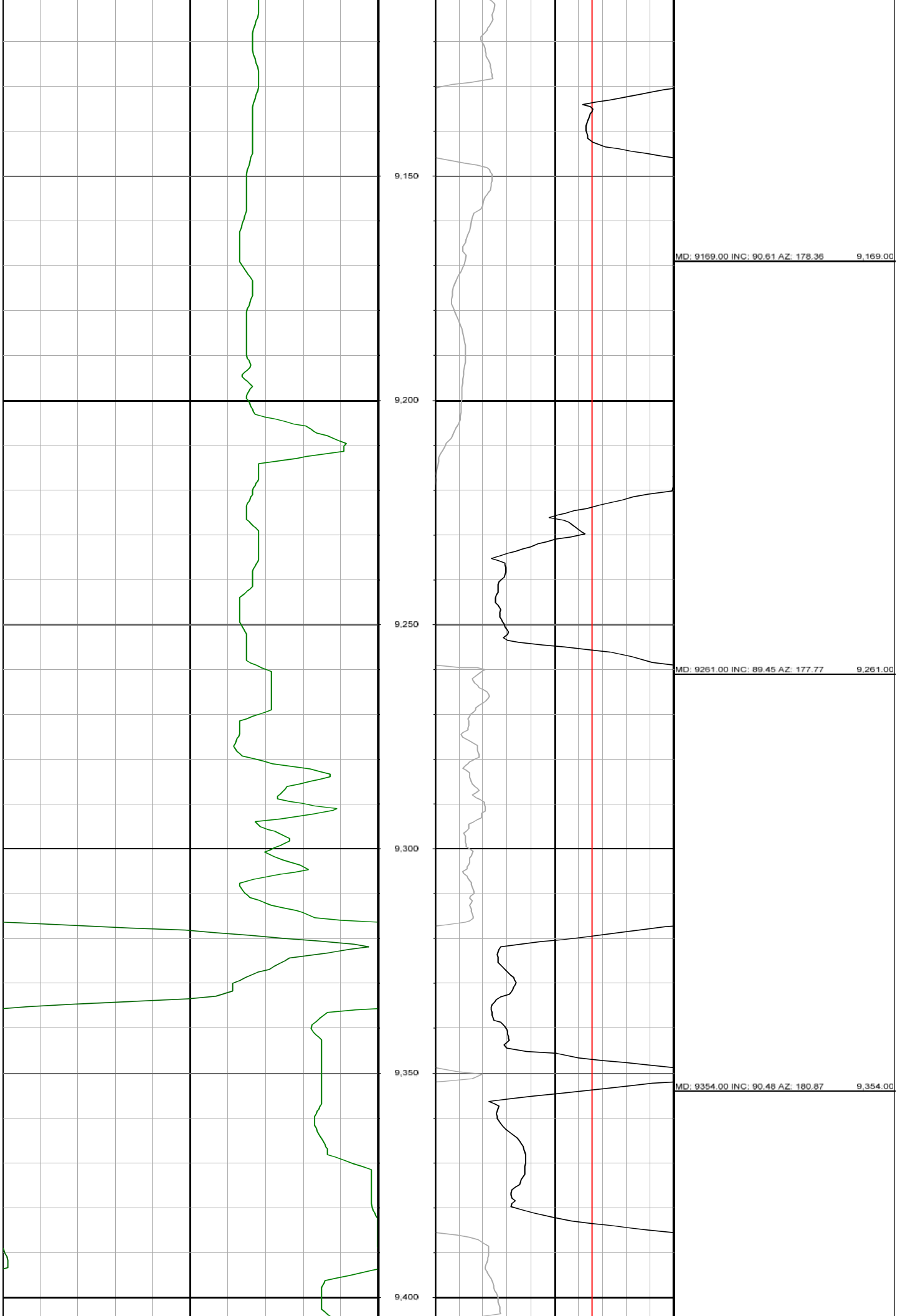
MD: 8253.00 INC: 91.22 AZ: 179.40 8,253.00

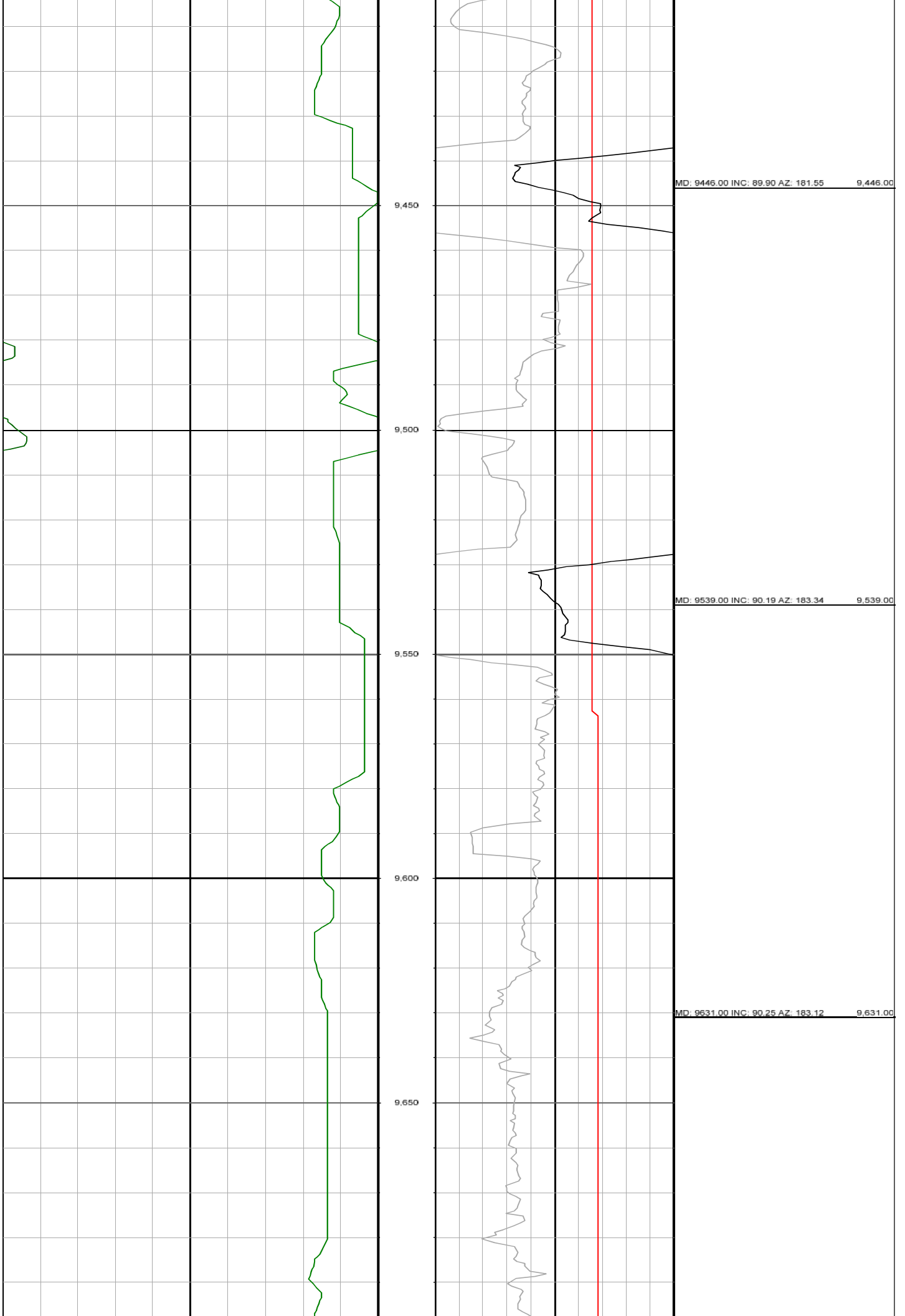
MD: 8345.00 INC: 92.18 AZ: 180.49 8,345.00

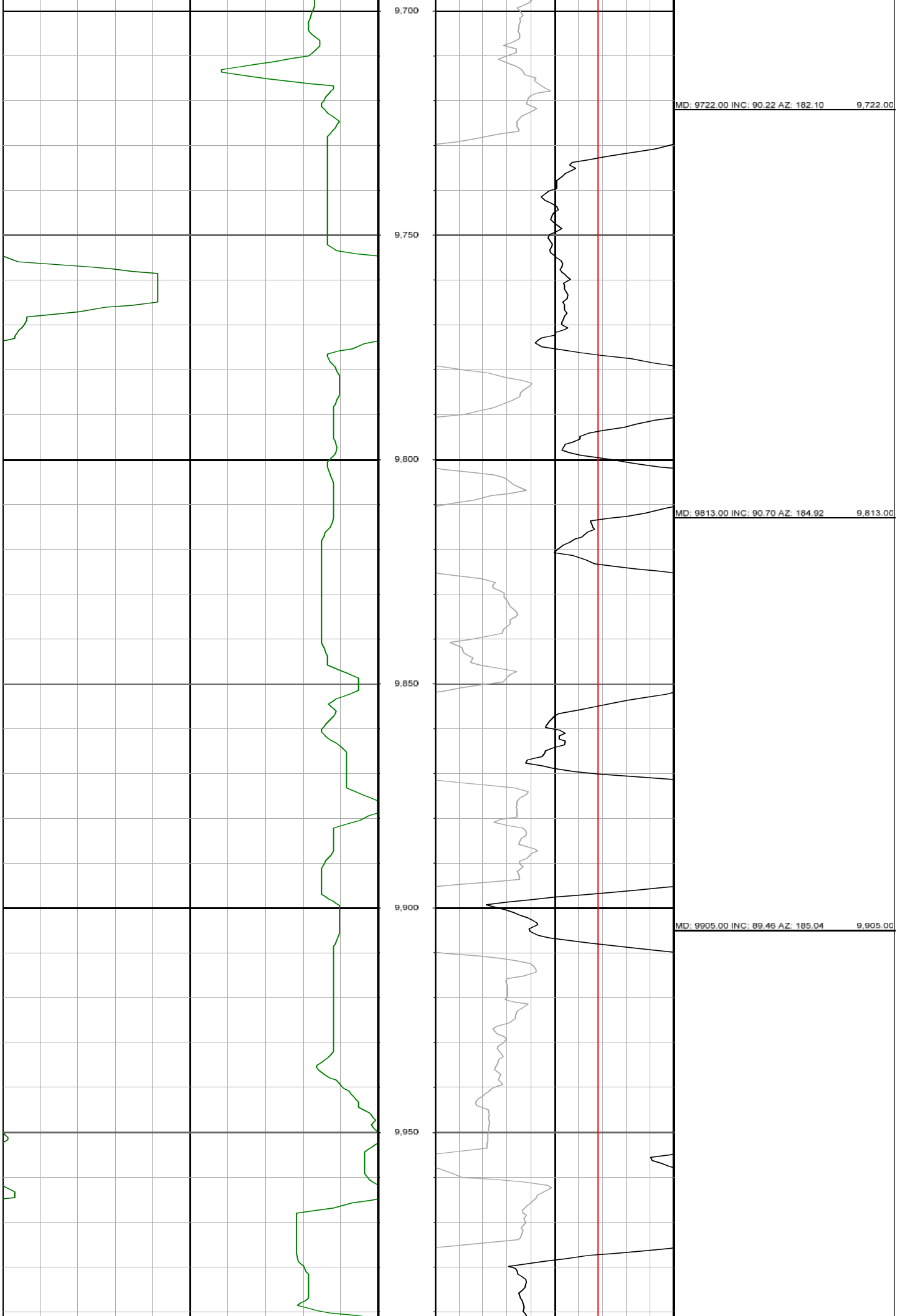
MD: 8437.00 INC: 92.96 AZ: 182.06 8,437.00

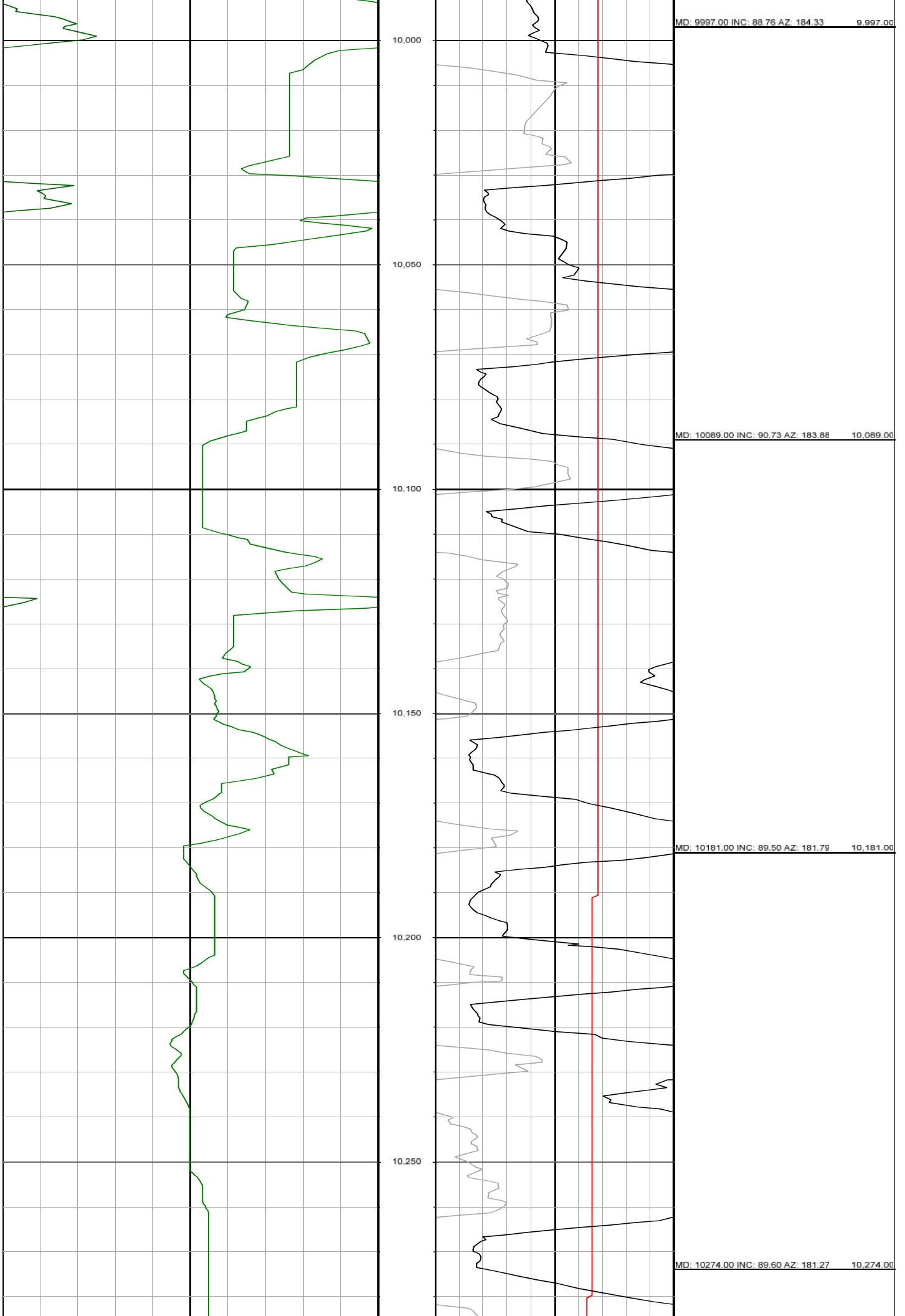


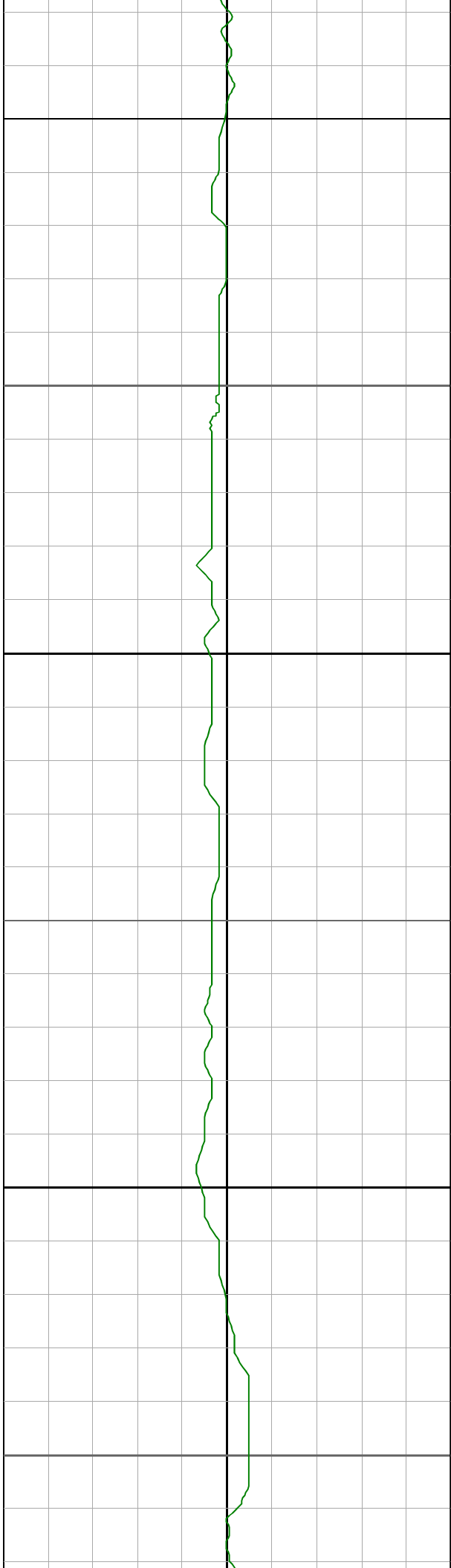












10,600

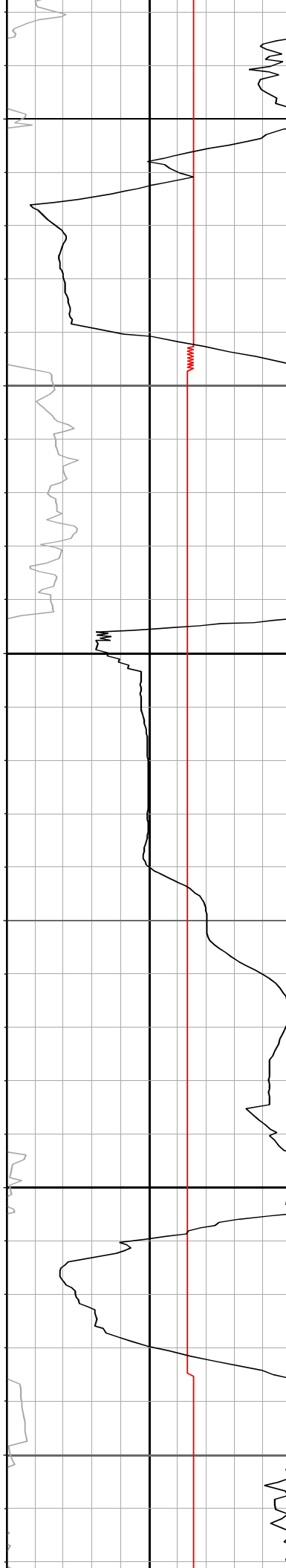
10,650

10,700

10,750

10,800

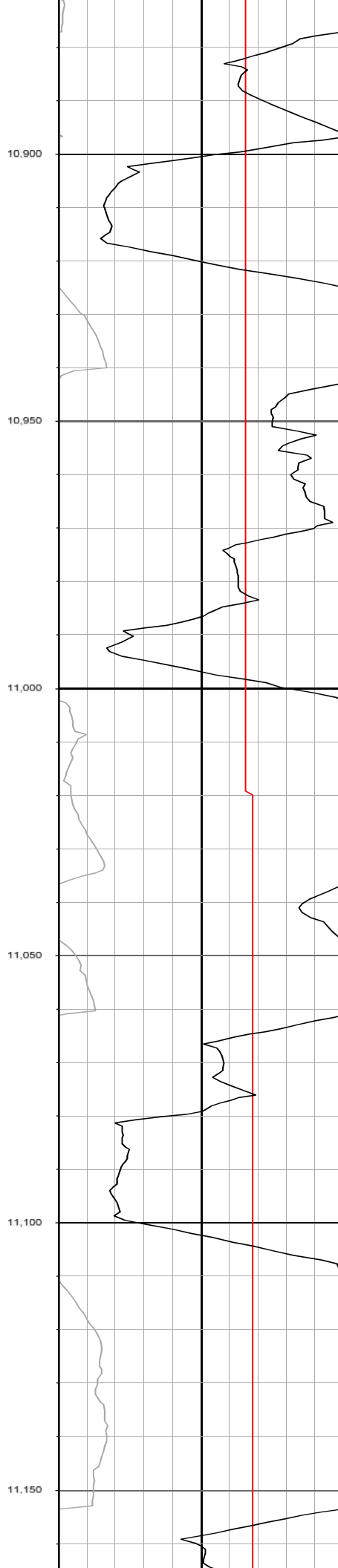
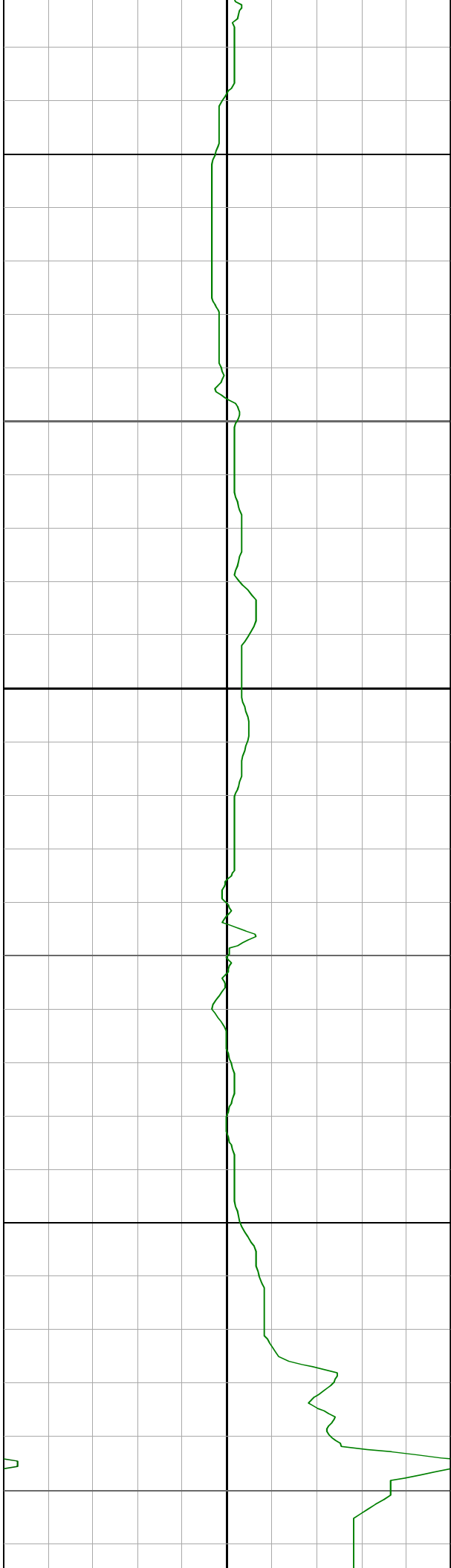
10,850



MD: 10642.00 INC: 89.45 AZ: 176.79 10,642.00

MD: 10734.00 INC: 89.68 AZ: 177.07 10,734.00

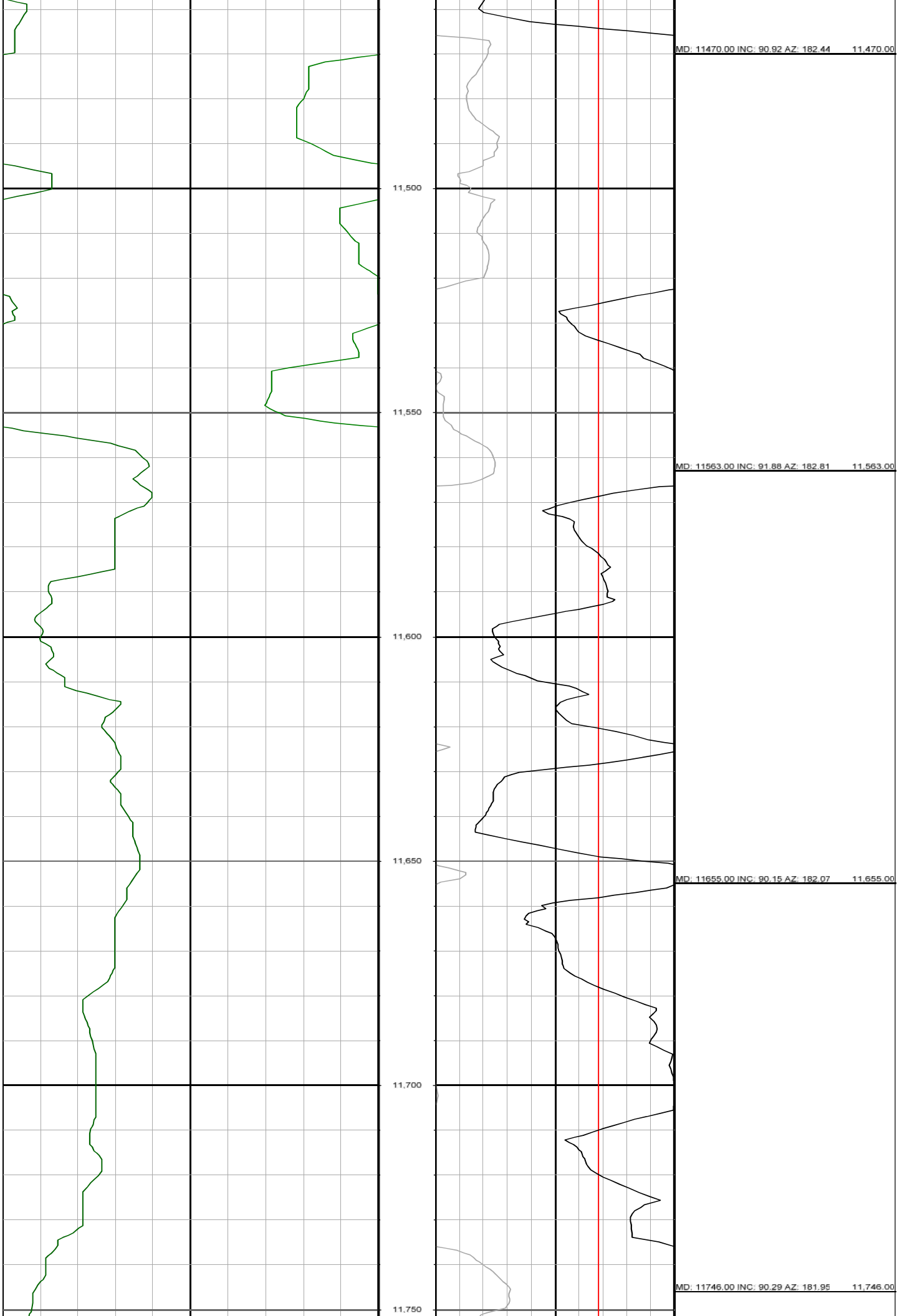
MD: 10826.00 INC: 89.80 AZ: 183.05 10,826.00

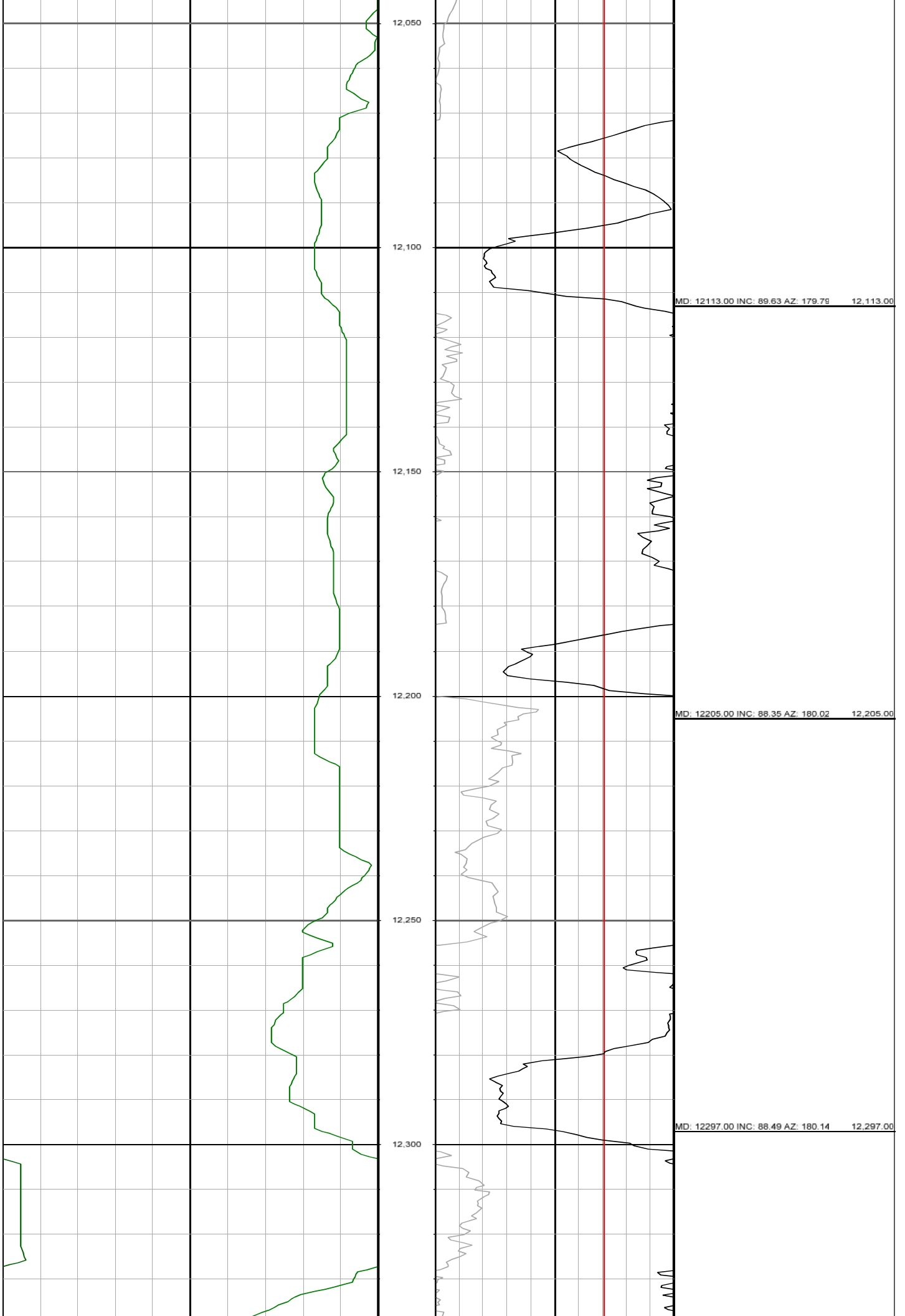


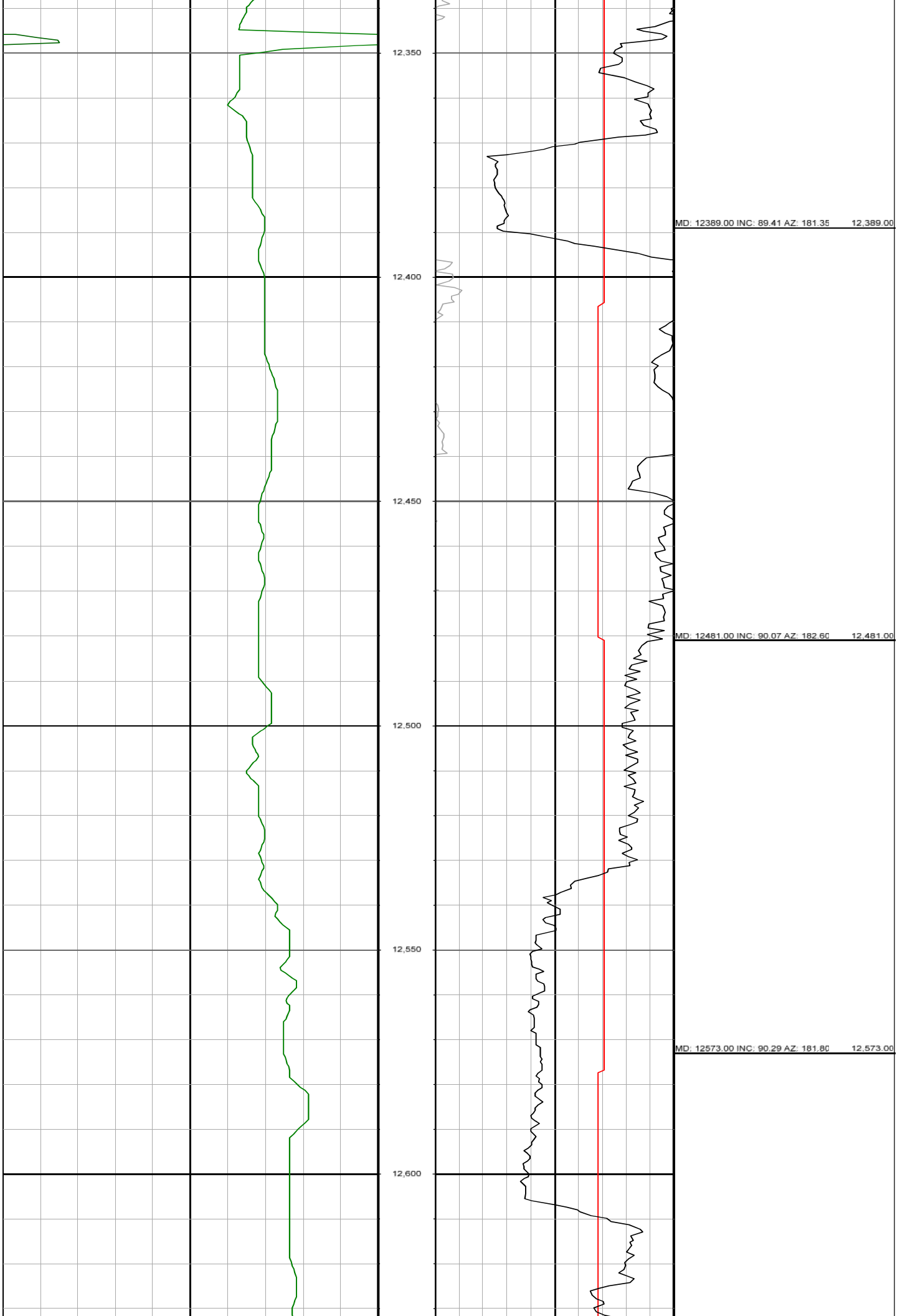
MD: 10918.00 INC: 89.93 AZ: 180.71 10,918.00

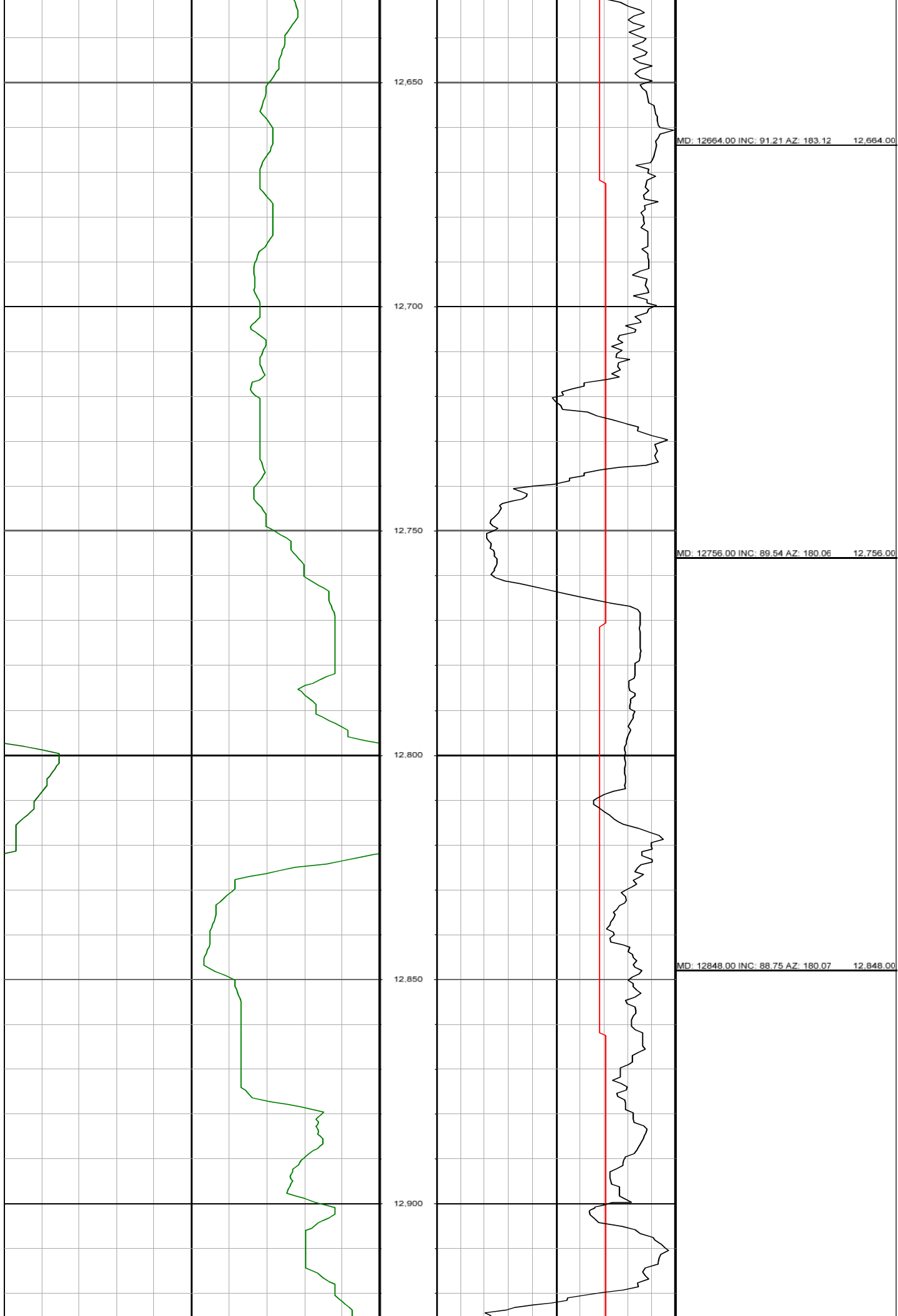
MD: 11010.00 INC: 89.23 AZ: 178.72 11,010.00

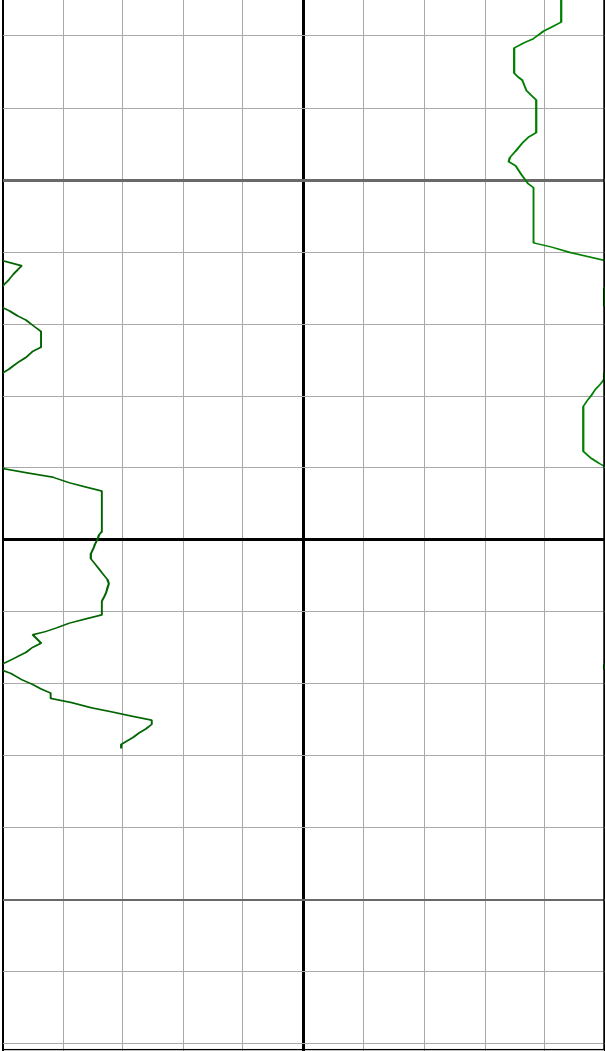
MD: 11102.00 INC: 90.81 AZ: 179.66 11,102.00



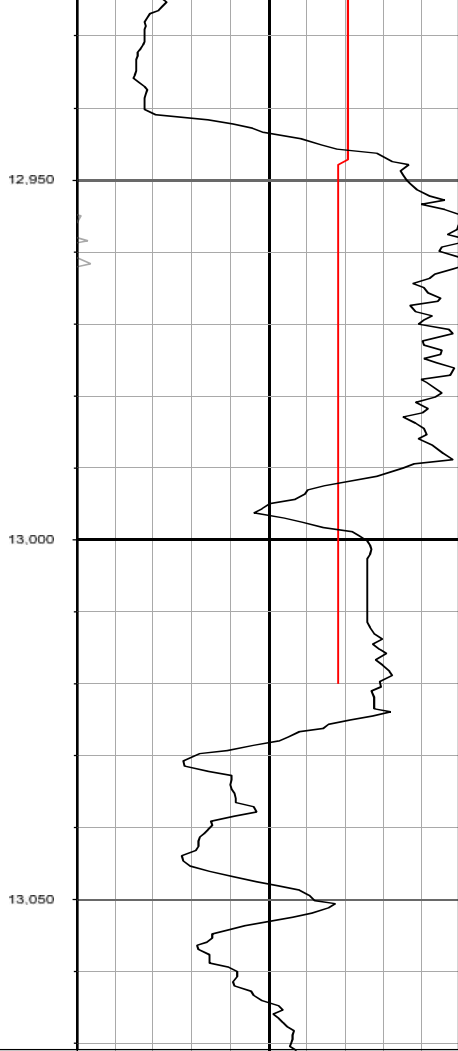








0.00 GR(API) 150.00
150.00 z 300.00
300.00 d 450.00



MD 0.00 ROP(FT/HR) 300.00
FT 300.00 z 600.00
0.00 TEMP(degF) 300.00

MD: 12941.00 INC: 89.81 AZ: 180.40 12,941.00

MD: 13023.00 INC: 89.10 AZ: 179.75 13,023.00

Surveys (MD/INC/AZ)