

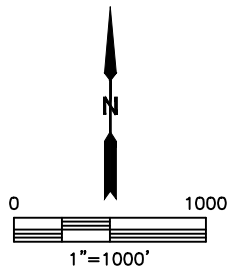
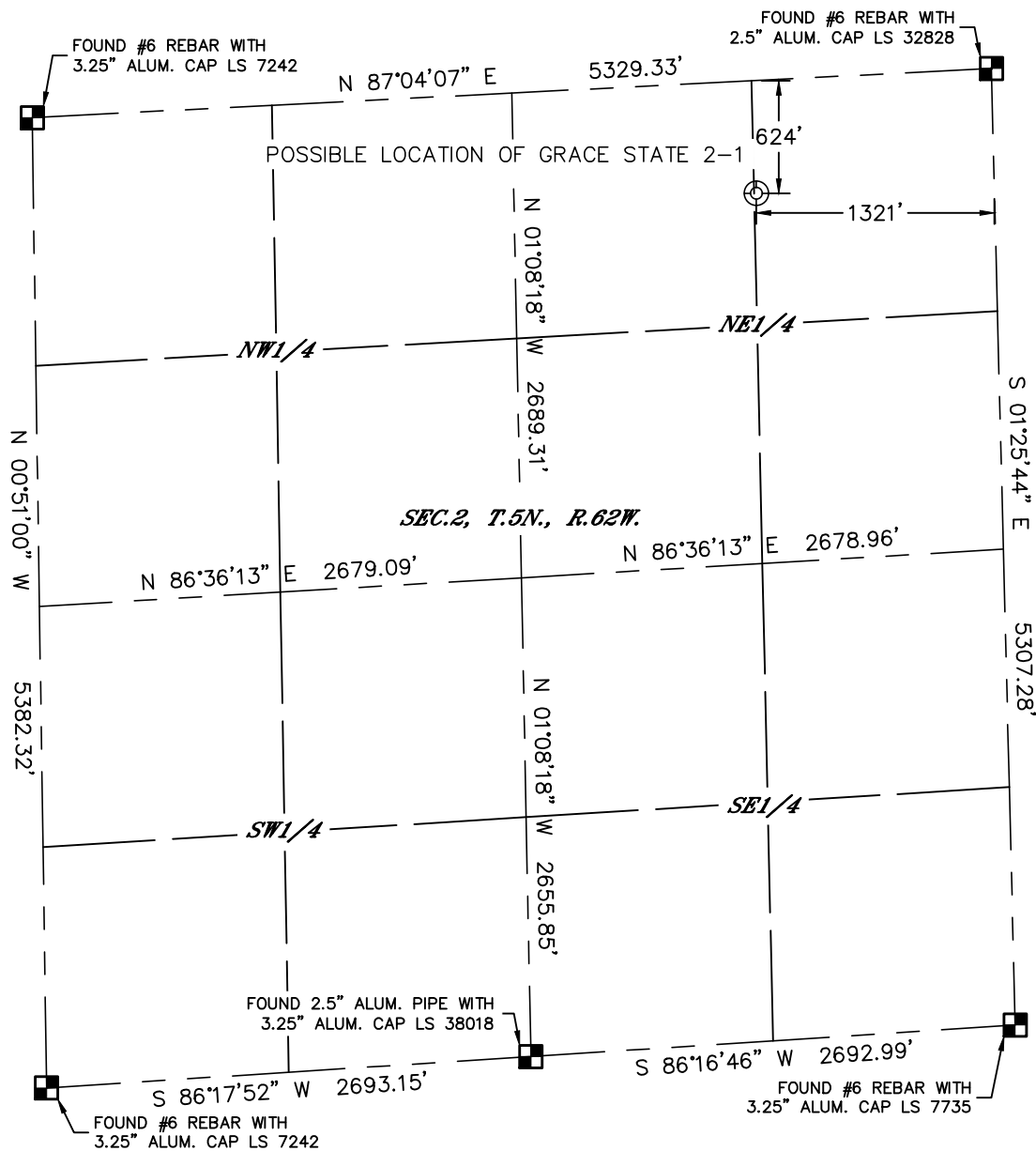


Lat40°, Inc. 6250 W. 10th Street, Unit 2, Greeley, CO 970-515-5294

PLUGGED & ABANDONED WELL EXHIBIT

THIS MAP DOES NOT REPRESENT A BOUNDARY SURVEY

SECTION: 2
TOWNSHIP: 5N
RANGE: 62W



SURFACE LOCATION
LAT: 40.43543°N
LONG: 104.28564°W
PDOP: 1.8
ELEV: 4675'
1/4,1/4: NENE

SURFACE LOCATION DESCRIPTION
FOUND A STRONG METAL DETECTOR SIGNAL WITHIN 20'
DIA. OF LOCATION. SET T-POST WITH PINK LATH AND
FLAGGING

LEGEND

- = ALIQUOT MONUMENT AS DESCRIBED
- = CALCULATED POSITION

DATE: 10/31/2014
PROJECT#: 2013173



Lat40°, Inc. 1635 Foxtrail Drive, Suite 325 Loveland, CO 970-776-3321

P&A WELL LOCATION PICTURES

GRACE STATE

SECTION: 2
TOWNSHIP: 5N
RANGE: 62W

DATE: 10/31/2014



VIEW NORTH



VIEW WEST



VIEW EAST



VIEW SOUTH

DATE: 10/31/2014
PROJECT#: 2013173