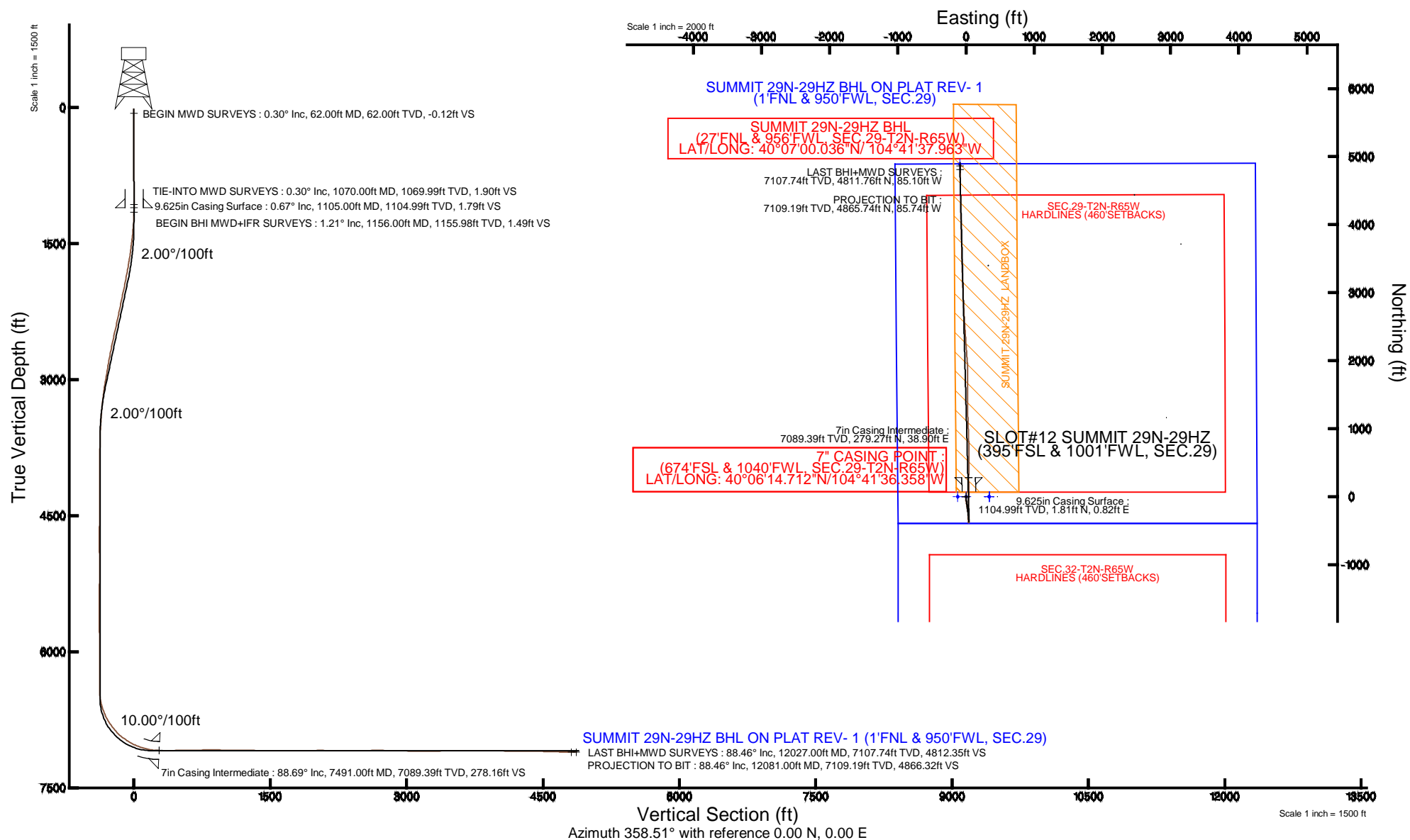


Location: COLORADO Slot: SLOT#12 SUMMIT 29N-29HZ (395'FSL & 1001'FWL, SEC.29)
Field: WELD COUNTY (KERR MCGEE) Well: SUMMIT 29N-29HZ
Facility: SEC.29-T2N-R65W Wellbore: SUMMIT 29N-29HZ PWB

Plot reference wellpath is SUMMIT 29N-29HZ PWP (REV-A.0)	
True vertical depths are referenced to XTREME 6 (16KB) (RKB)	Grid System: NAD83 / Lambert Colorado SP, Northern Zone (501), US feet
Measured depths are referenced to XTREME 6 (16KB) (RKB)	North Reference: True north
XTREME 6 (16KB) (RKB) to Mean Sea Level: 4957 feet	Scale: True distance
Mean Sea Level to Mud line (At Slot: SLOT#12 SUMMIT 29N-29HZ (395FSL & 1001FWL, SEC.29)): 0 feet	Depths are in feet
Coordinates are in feet referenced to Slot	Created by: amarcos on 11/20/2014



Actual Wellpath Report

SUMMIT 29N-29HZ AWP

Page 1 of 6

REFERENCE WELLPATH IDENTIFICATION

Operator	KERR-MCGEE OIL & GAS ONSHORE LP	Slot	SLOT#12 SUMMIT 29N-29HZ (395'FSL & 1001'FWL, SEC.29)
Area	COLORADO	Well	SUMMIT 29N-29HZ
Field	WELD COUNTY (KERR MCGEE)	Wellbore	SUMMIT 29N-29HZ AWP (62'-12081'MD)
Facility	SEC.29-T2N-R65W		

REPORT SETUP INFORMATION

Projection System	NAD83 / Lambert Colorado SP, Northern Zone (501), US feet	Software System	WellArchitect® 4.0.0
North Reference	True	User	Amarcar
Scale	0.99996	Report Generated	11/20/2014 at 8:56:30 AM
Convergence at slot	n/a	Database/Source file	WellArchitectDB/SUMMIT_29N-29HZ_AWP_62_-12081_MD_.xml

WELLPATH LOCATION

	Local coordinates		Grid coordinates		Geographic coordinates	
	North[ft]	East[ft]	Easting[US ft]	Northing[US ft]	Latitude	Longitude
Slot Location	-0.20	-339.89	3225578.33	1281509.55	40°06'11.952"N	104°41'36.859"W
Facility Reference Pt			3225918.18	1281512.85	40°06'11.954"N	104°41'32.485"W
Field Reference Pt			3197771.84	1268891.29	40°04'09.600"N	104°47'36.000"W

WELLPATH DATUM

Calculation method	Minimum curvature	XTREME 6 (16'KB) (RKB) to Facility Vertical Datum	4957.00ft
Horizontal Reference Pt	Slot	XTREME 6 (16'KB) (RKB) to Mean Sea Level	4957.00ft
Vertical Reference Pt	XTREME 6 (16'KB) (RKB)	XTREME 6 (16'KB) (RKB) to Mud Line at Slot (SLOT#12 SUMMIT 29N-29HZ (395'FSL & 1001'FWL, SEC.29))	4957.00ft
MD Reference Pt	XTREME 6 (16'KB) (RKB)	Section Origin	N 0.00, E 0.00 ft
Field Vertical Reference	Mean Sea Level	Section Azimuth	358.51°

Actual Wellpath Report

SUMMIT 29N-29HZ AWP

Page 2 of 6

REFERENCE WELLPATH IDENTIFICATION

Operator	KERR-MCGEE OIL & GAS ONSHORE LP	Slot	SLOT#12 SUMMIT 29N-29HZ (395'FSL & 1001'FWL, SEC.29)
Area	COLORADO	Well	SUMMIT 29N-29HZ
Field	WELD COUNTY (KERR MCGEE)	Wellbore	SUMMIT 29N-29HZ AWP (62'-12081'MD)
Facility	SEC.29-T2N-R65W		

WELLPATH DATA (109 stations) † = interpolated/extrapolated station

MD [ft]	Inclination [°]	Azimuth [°]	TVD [ft]	Vert Sect [ft]	North [ft]	East [ft]	Latitude	Longitude	DLS [°/100ft]	Comments
0.00†	0.000	186.700	0.00	0.00	0.00	0.00	40°06'11.952"N	104°41'36.859"W	0.00	
16.00	0.000	186.700	16.00	0.00	0.00	0.00	40°06'11.952"N	104°41'36.859"W	0.00	
62.00	0.300	186.700	62.00	-0.12	-0.12	-0.01	40°06'11.951"N	104°41'36.859"W	0.65	BEGIN MWD SURVEYS
131.00	0.200	129.500	131.00	-0.38	-0.38	0.06	40°06'11.948"N	104°41'36.858"W	0.37	
229.00	0.200	125.700	229.00	-0.59	-0.58	0.33	40°06'11.946"N	104°41'36.855"W	0.01	
328.00	0.200	42.900	328.00	-0.57	-0.56	0.59	40°06'11.946"N	104°41'36.851"W	0.27	
408.00	0.300	77.800	408.00	-0.43	-0.41	0.89	40°06'11.948"N	104°41'36.848"W	0.22	
488.00	0.200	345.800	488.00	-0.26	-0.23	1.06	40°06'11.950"N	104°41'36.845"W	0.46	
568.00	0.300	320.900	568.00	0.04	0.07	0.89	40°06'11.953"N	104°41'36.848"W	0.18	
648.00	0.600	346.400	647.99	0.62	0.64	0.66	40°06'11.958"N	104°41'36.851"W	0.44	
728.00	0.200	9.300	727.99	1.16	1.18	0.58	40°06'11.964"N	104°41'36.851"W	0.53	
808.00	0.400	46.200	807.99	1.49	1.51	0.81	40°06'11.967"N	104°41'36.849"W	0.34	
888.00	0.300	28.600	887.99	1.86	1.89	1.11	40°06'11.971"N	104°41'36.845"W	0.18	
968.00	0.100	52.400	967.99	2.08	2.11	1.27	40°06'11.973"N	104°41'36.843"W	0.27	
1048.00	0.300	221.200	1047.99	1.97	2.00	1.18	40°06'11.972"N	104°41'36.844"W	0.50	
1070.00	0.300	244.700	1069.99	1.90	1.93	1.09	40°06'11.971"N	104°41'36.845"W	0.56	TIE-INTO MWD SURVEYS
1156.00	1.210	247.780	1155.98	1.49	1.49	0.05	40°06'11.967"N	104°41'36.858"W	1.06	BEGIN BHI MWD+IFR SURVEYS
1251.00	4.010	205.050	1250.88	-1.84	-1.90	-2.29	40°06'11.933"N	104°41'36.888"W	3.40	
1343.00	5.020	195.470	1342.59	-8.57	-8.69	-4.72	40°06'11.866"N	104°41'36.920"W	1.37	
1434.00	6.440	185.680	1433.14	-17.44	-17.61	-6.29	40°06'11.778"N	104°41'36.940"W	1.89	
1526.00	7.420	174.320	1524.47	-28.48	-28.65	-6.21	40°06'11.669"N	104°41'36.939"W	1.83	
1615.00	8.170	166.370	1612.65	-40.40	-40.52	-4.15	40°06'11.552"N	104°41'36.912"W	1.47	
1704.00	9.230	169.010	1700.62	-53.62	-53.67	-1.30	40°06'11.422"N	104°41'36.876"W	1.27	
1795.00	10.020	171.490	1790.34	-68.68	-68.67	1.26	40°06'11.273"N	104°41'36.843"W	0.98	
1885.00	11.210	170.590	1878.80	-85.11	-85.04	3.85	40°06'11.112"N	104°41'36.809"W	1.33	
1976.00	12.030	169.580	1967.93	-103.24	-103.09	7.01	40°06'10.933"N	104°41'36.769"W	0.93	
2066.00	11.720	170.980	2056.01	-121.57	-121.35	10.14	40°06'10.753"N	104°41'36.729"W	0.47	
2158.00	11.490	170.630	2146.13	-139.91	-139.62	13.10	40°06'10.572"N	104°41'36.690"W	0.26	
2338.00	12.270	167.660	2322.27	-176.45	-175.99	20.10	40°06'10.213"N	104°41'36.600"W	0.55	
2520.00	12.750	168.170	2499.95	-215.20	-214.54	28.35	40°06'09.832"N	104°41'36.494"W	0.27	
2702.00	11.320	166.440	2677.95	-252.43	-251.56	36.66	40°06'09.466"N	104°41'36.387"W	0.81	
2871.00	10.050	173.760	2844.02	-283.35	-282.35	42.15	40°06'09.162"N	104°41'36.317"W	1.10	
2956.00	9.250	170.210	2927.82	-297.50	-296.45	44.12	40°06'09.022"N	104°41'36.291"W	1.17	
3041.00	9.470	181.140	3011.69	-311.24	-310.18	45.14	40°06'08.887"N	104°41'36.278"W	2.10	
3127.00	8.790	180.970	3096.60	-324.88	-323.82	44.89	40°06'08.752"N	104°41'36.281"W	0.79	
3212.00	7.070	185.800	3180.79	-336.56	-335.52	44.25	40°06'08.636"N	104°41'36.290"W	2.17	
3297.00	6.430	184.980	3265.20	-346.47	-345.47	43.31	40°06'08.538"N	104°41'36.302"W	0.76	
3383.00	4.600	182.790	3350.80	-354.70	-353.71	42.72	40°06'08.457"N	104°41'36.309"W	2.14	
3468.00	3.870	185.860	3435.56	-360.94	-359.97	42.27	40°06'08.395"N	104°41'36.315"W	0.90	
3553.00	3.610	192.170	3520.38	-366.39	-365.44	41.41	40°06'08.341"N	104°41'36.326"W	0.57	
3638.00	2.140	172.060	3605.28	-370.56	-369.62	41.06	40°06'08.299"N	104°41'36.331"W	2.07	
3724.00	0.440	178.280	3691.25	-372.49	-371.54	41.30	40°06'08.280"N	104°41'36.328"W	1.98	
3809.00	0.580	191.970	3776.25	-373.24	-372.29	41.22	40°06'08.273"N	104°41'36.329"W	0.22	
3979.00	0.590	229.270	3946.24	-374.63	-373.70	40.37	40°06'08.259"N	104°41'36.339"W	0.22	
4149.00	0.680	210.930	4116.23	-376.03	-375.14	39.19	40°06'08.245"N	104°41'36.355"W	0.13	

Actual Wellpath Report

SUMMIT 29N-29HZ AWP

Page 3 of 6

REFERENCE WELLPATH IDENTIFICATION

Operator	KERR-MCGEE OIL & GAS ONSHORE LP	Slot	SLOT#12 SUMMIT 29N-29HZ (395'FSL & 1001'FWL, SEC.29)
Area	COLORADO	Well	SUMMIT 29N-29HZ
Field	WELD COUNTY (KERR MCGEE)	Wellbore	SUMMIT 29N-29HZ AWP (62'-12081'MD)
Facility	SEC.29-T2N-R65W		

WELLPATH DATA (109 stations) † = interpolated/extrapolated station

MD [ft]	Inclination [°]	Azimuth [°]	TVD [ft]	Vert Sect [ft]	North [ft]	East [ft]	Latitude	Longitude	DLS [°/100ft]	Comments
4319.00	0.330	336.710	4286.23	-376.43	-375.56	38.48	40°06'08.241"N	104°41'36.364"W	0.54	
4489.00	1.500	261.600	4456.20	-376.24	-375.43	36.09	40°06'08.242"N	104°41'36.395"W	0.85	
4657.00	1.330	197.980	4624.16	-378.34	-377.61	33.31	40°06'08.220"N	104°41'36.430"W	0.89	
4828.00	0.800	19.590	4795.15	-379.10	-378.37	33.10	40°06'08.213"N	104°41'36.433"W	1.25	
5083.00	0.270	89.600	5050.14	-377.45	-376.69	34.29	40°06'08.230"N	104°41'36.418"W	0.29	
5424.00	1.210	110.140	5391.11	-378.79	-377.92	38.48	40°06'08.217"N	104°41'36.364"W	0.28	
5763.00	0.610	335.560	5730.09	-378.45	-377.51	41.09	40°06'08.221"N	104°41'36.330"W	0.50	
6104.00	0.640	281.210	6071.07	-376.36	-375.49	38.47	40°06'08.241"N	104°41'36.364"W	0.17	
6445.00	1.280	73.440	6412.05	-374.95	-374.03	40.25	40°06'08.256"N	104°41'36.341"W	0.55	
6487.00	1.170	27.310	6454.04	-374.45	-373.52	40.90	40°06'08.261"N	104°41'36.333"W	2.30	
6530.00	5.290	352.670	6496.96	-372.10	-371.16	40.85	40°06'08.284"N	104°41'36.333"W	10.18	
6572.00	9.720	345.490	6538.59	-366.71	-365.81	39.71	40°06'08.337"N	104°41'36.348"W	10.76	
6613.00	14.290	343.850	6578.69	-358.44	-357.59	37.44	40°06'08.418"N	104°41'36.377"W	11.18	
6655.00	18.490	346.600	6618.97	-346.91	-346.13	34.45	40°06'08.532"N	104°41'36.416"W	10.17	
6696.00	21.870	352.500	6657.45	-332.94	-332.23	31.95	40°06'08.669"N	104°41'36.448"W	9.61	
6739.00	25.370	356.430	6696.85	-315.77	-315.09	30.33	40°06'08.838"N	104°41'36.469"W	8.92	
6781.00	27.750	1.130	6734.41	-297.00	-296.33	29.96	40°06'09.024"N	104°41'36.473"W	7.56	
6824.00	31.750	2.110	6771.74	-275.70	-275.00	30.57	40°06'09.234"N	104°41'36.466"W	9.37	
6867.00	35.950	2.060	6807.44	-251.80	-251.07	31.44	40°06'09.471"N	104°41'36.454"W	9.77	
6909.00	38.460	1.260	6840.89	-226.45	-225.69	32.18	40°06'09.722"N	104°41'36.445"W	6.09	
6952.00	40.390	3.090	6874.11	-199.20	-198.40	33.22	40°06'09.991"N	104°41'36.431"W	5.24	
6994.00	45.390	3.470	6904.87	-170.72	-169.88	34.86	40°06'10.273"N	104°41'36.410"W	11.92	
7037.00	51.440	1.340	6933.40	-138.65	-137.76	36.18	40°06'10.591"N	104°41'36.393"W	14.55	
7079.00	54.200	1.800	6958.78	-105.24	-104.31	37.10	40°06'10.921"N	104°41'36.382"W	6.63	
7122.00	57.150	1.990	6983.02	-69.79	-68.82	38.27	40°06'11.272"N	104°41'36.366"W	6.87	
7165.00	60.640	1.550	7005.23	-33.04	-32.03	39.41	40°06'11.635"N	104°41'36.352"W	8.16	
7207.00	64.300	0.870	7024.64	4.16	5.20	40.19	40°06'12.003"N	104°41'36.342"W	8.83	
7249.00	67.730	1.000	7041.71	42.49	43.56	40.82	40°06'12.383"N	104°41'36.334"W	8.17	
7292.00	71.310	1.120	7056.76	82.72	83.83	41.56	40°06'12.780"N	104°41'36.324"W	8.33	
7335.00	75.270	359.920	7069.12	123.87	125.01	41.93	40°06'13.187"N	104°41'36.319"W	9.59	
7377.00	79.530	358.180	7078.28	164.85	165.98	41.25	40°06'13.592"N	104°41'36.328"W	10.92	
7420.00	83.360	357.710	7084.67	207.36	208.46	39.72	40°06'14.012"N	104°41'36.348"W	8.97	
7455.00	86.320	359.370	7087.82	242.21	243.31	38.84	40°06'14.356"N	104°41'36.359"W	9.69	
7491.00†	88.691	0.818	7089.39	278.16	279.27	38.90	40°06'14.712"N	104°41'36.358"W	7.72	7" CASING POINT
7501.00	89.350	1.220	7089.56	288.15	289.26	39.07	40°06'14.811"N	104°41'36.356"W	7.72	
7559.00	89.900	1.660	7089.94	346.07	347.24	40.53	40°06'15.384"N	104°41'36.337"W	1.21	
7644.00	90.640	1.530	7089.54	430.95	432.21	42.90	40°06'16.223"N	104°41'36.307"W	0.88	
7815.00	90.920	359.080	7087.21	601.84	603.18	43.81	40°06'17.913"N	104°41'36.295"W	1.44	
7985.00	91.160	358.810	7084.12	771.80	773.12	40.68	40°06'19.592"N	104°41'36.335"W	0.21	
8155.00	88.790	357.540	7084.20	941.79	943.02	35.26	40°06'21.271"N	104°41'36.405"W	1.58	
8326.00	89.130	358.060	7087.30	1112.74	1113.86	28.70	40°06'22.959"N	104°41'36.490"W	0.36	
8496.00	89.690	358.690	7089.05	1282.73	1283.79	23.88	40°06'24.639"N	104°41'36.552"W	0.50	
8666.00	89.290	359.760	7090.57	1452.71	1453.76	21.58	40°06'26.318"N	104°41'36.581"W	0.67	
8836.00	90.000	0.560	7091.62	1622.63	1623.75	22.06	40°06'27.998"N	104°41'36.575"W	0.63	
9004.00	89.660	0.840	7092.12	1790.51	1791.74	24.11	40°06'29.658"N	104°41'36.549"W	0.26	

Actual Wellpath Report

SUMMIT 29N-29HZ AWP

Page 4 of 6

REFERENCE WELLPATH IDENTIFICATION

Operator	KERR-MCGEE OIL & GAS ONSHORE LP	Slot	SLOT#12 SUMMIT 29N-29HZ (395'FSL & 1001'FWL, SEC.29)
Area	COLORADO	Well	SUMMIT 29N-29HZ
Field	WELD COUNTY (KERR MCGEE)	Wellbore	SUMMIT 29N-29HZ AWP (62'-12081'MD)
Facility	SEC.29-T2N-R65W		

WELLPATH DATA (109 stations)

MD [ft]	Inclination [°]	Azimuth [°]	TVD [ft]	Vert Sect [ft]	North [ft]	East [ft]	Latitude	Longitude	DLS [°/100ft]	Comments
9175.00	91.540	356.380	7090.33	1961.45	1962.63	19.96	40°06'31.347"N	104°41'36.602"W	2.83	
9344.00	88.670	355.510	7090.02	2130.26	2131.19	8.01	40°06'33.013"N	104°41'36.756"W	1.77	
9515.00	89.930	356.420	7092.11	2301.07	2301.75	-4.02	40°06'34.698"N	104°41'36.911"W	0.91	
9686.00	90.800	356.560	7091.02	2471.96	2472.42	-14.49	40°06'36.385"N	104°41'37.045"W	0.52	
9856.00	90.550	355.910	7089.01	2641.82	2642.04	-25.65	40°06'38.061"N	104°41'37.189"W	0.41	
10026.00	88.390	357.150	7090.59	2811.69	2811.71	-35.94	40°06'39.738"N	104°41'37.322"W	1.47	
10195.00	89.290	357.920	7094.01	2980.63	2980.51	-43.20	40°06'41.406"N	104°41'37.415"W	0.70	
10365.00	89.720	358.100	7095.48	3150.62	3150.40	-49.11	40°06'43.085"N	104°41'37.491"W	0.27	
10536.00	90.640	358.220	7094.94	3321.61	3321.31	-54.60	40°06'44.774"N	104°41'37.562"W	0.54	
10706.00	91.040	358.280	7092.45	3491.59	3491.22	-59.79	40°06'46.453"N	104°41'37.629"W	0.24	
10877.00	90.120	358.720	7090.72	3662.58	3662.15	-64.26	40°06'48.142"N	104°41'37.686"W	0.60	
11045.00	89.840	358.880	7090.77	3830.58	3830.11	-67.78	40°06'49.802"N	104°41'37.731"W	0.19	
11213.00	88.730	358.630	7092.87	3998.56	3998.05	-71.43	40°06'51.461"N	104°41'37.778"W	0.68	
11383.00	89.230	358.740	7095.90	4168.53	4167.98	-75.33	40°06'53.141"N	104°41'37.829"W	0.30	
11554.00	90.060	359.220	7096.96	4339.52	4338.95	-78.38	40°06'54.830"N	104°41'37.868"W	0.56	
11724.00	88.150	358.800	7099.61	4509.49	4508.89	-81.31	40°06'56.510"N	104°41'37.906"W	1.15	
11894.00	88.640	359.540	7104.37	4679.41	4678.81	-83.77	40°06'58.189"N	104°41'37.937"W	0.52	
12027.00	88.460	359.320	7107.74	4812.35	4811.76	-85.10	40°06'59.502"N	104°41'37.954"W	0.21	LAST BHI+MWD SURVEYS
12081.00	88.460	359.320	7109.19	4866.32	4865.74	-85.74	40°07'00.036"N	104°41'37.963"W	0.00	PROJECTION TO BIT

HOLE & CASING SECTIONS - Ref Wellbore: SUMMIT 29N-29HZ AWP (62'-12081'MD) Ref Wellpath: SUMMIT 29N-29HZ AWP

String/Diameter	Start MD [ft]	End MD [ft]	Interval [ft]	Start TVD [ft]	End TVD [ft]	Start N/S [ft]	Start E/W [ft]	End N/S [ft]	End E/W [ft]
13.5in Open Hole	16.00	1115.00	1099.00	16.00	1114.99	0.00	0.00	1.76	0.71
9.625in Casing Surface	16.00	1105.00	1089.00	16.00	1104.99	0.00	0.00	1.81	0.82
8.75in Open Hole	1115.00	7501.00	6386.00	1114.99	7089.56	1.76	0.71	289.26	39.07
7in Casing Intermediate	16.00	7491.00	7475.00	16.00	7089.39	0.00	0.00	279.27	38.90
6.125in Open Hole	7501.00	12081.00	4580.00	7089.56	7109.19	289.26	39.07	4865.74	-85.74

Actual Wellpath Report

SUMMIT 29N-29HZ AWP

Page 5 of 6

REFERENCE WELLPATH IDENTIFICATION			
Operator	KERR-MCGEE OIL & GAS ONSHORE LP	Slot	SLOT#12 SUMMIT 29N-29HZ (395'FSL & 1001'FWL, SEC.29)
Area	COLORADO	Well	SUMMIT 29N-29HZ
Field	WELD COUNTY (KERR MCGEE)	Wellbore	SUMMIT 29N-29HZ AWB (62'-12081'MD)
Facility	SEC.29-T2N-R65W		

TARGETS									
Name	MD [ft]	TVD [ft]	North [ft]	East [ft]	Grid East [US ft]	Grid North [US ft]	Latitude	Longitude	Shape
SUMMIT 29N-29HZ LANDBOX		7092.00	0.00	0.00	3225578.33	1281509.55	40°06'11.952"N	104°41'36.859"W	polygon
SUMMIT 29N-29HZ BHL ON PLAT REV- 1 (1'FNL & 950'FWL, SEC.29)		7092.00	4891.35	-91.75	3225442.10	1286399.66	40°07'00.289"N	104°41'38.040"W	point
SEC.29-T2N-R65W SECTION LINES		7118.00	0.41	339.89	3225918.18	1281513.05	40°06'11.956"N	104°41'32.485"W	polygon
SEC.32-T2N-R65W SECTION LINES		7118.00	0.41	339.89	3225918.18	1281513.05	40°06'11.956"N	104°41'32.485"W	polygon
SEC.29-T2N-R65W HARDLINES (460'SETBACKS)		7343.00	0.00	-120.02	3225458.31	1281508.46	40°06'11.952"N	104°41'38.404"W	polygon
SEC.32-T2N-R65W HARDLINES (460'SETBACKS)		7343.00	0.41	339.89	3225918.18	1281513.05	40°06'11.956"N	104°41'32.485"W	polygon

WELLPATH COMPOSITION - Ref Wellbore: SUMMIT 29N-29HZ AWB (62'-12081'MD)					Ref Wellpath: SUMMIT 29N-29HZ AWP	
Start MD [ft]	End MD [ft]	Positional Uncertainty Model	Log Name/Comment		Wellbore	
16.00	1070.00	ISCWSA MWD, Rev. 2 (Standard)	CATHEDRAL ENERGY MWD SURVEYS 13.5" <62-1070>		SUMMIT 29N-29HZ AWB (62'-12081'MD)	
1070.00	7501.00	NaviTrak (MAGCORR,IFR)	BHI MWD+IFR SURVEYS 8.75" <1156-7501>		SUMMIT 29N-29HZ AWB (62'-12081'MD)	
7501.00	12027.00	NaviTrak (MAGCORR,IFR)	BHI MWD+IFR SURVEYS 6.125" <7559-12027>		SUMMIT 29N-29HZ AWB (62'-12081'MD)	
12027.00	12081.00	Blind Drilling (std)	Projection to bit		SUMMIT 29N-29HZ AWB (62'-12081'MD)	

Actual Wellpath Report

SUMMIT 29N-29HZ AWP

Page 6 of 6

REFERENCE WELLPATH IDENTIFICATION

Operator	KERR-MCGEE OIL & GAS ONSHORE LP	Slot	SLOT#12 SUMMIT 29N-29HZ (395'FSL & 1001'FWL, SEC.29)
Area	COLORADO	Well	SUMMIT 29N-29HZ
Field	WELD COUNTY (KERR MCGEE)	Wellbore	SUMMIT 29N-29HZ AWB (62'-12081'MD)
Facility	SEC.29-T2N-R65W		

WELLPATH COMMENTS

MD [ft]	Inclination [°]	Azimuth [°]	TVD [ft]	Comment
62.00	0.300	186.700	62.00	BEGIN MWD SURVEYS
1070.00	0.300	244.700	1069.99	TIE-INTO MWD SURVEYS
1156.00	1.210	247.780	1155.98	BEGIN BHI MWD+IFR SURVEYS
7491.00	88.691	0.818	7089.39	7" CASING POINT
12027.00	88.460	359.320	7107.74	LAST BHI+MWD SURVEYS
12081.00	88.460	359.320	7109.19	PROJECTION TO BIT