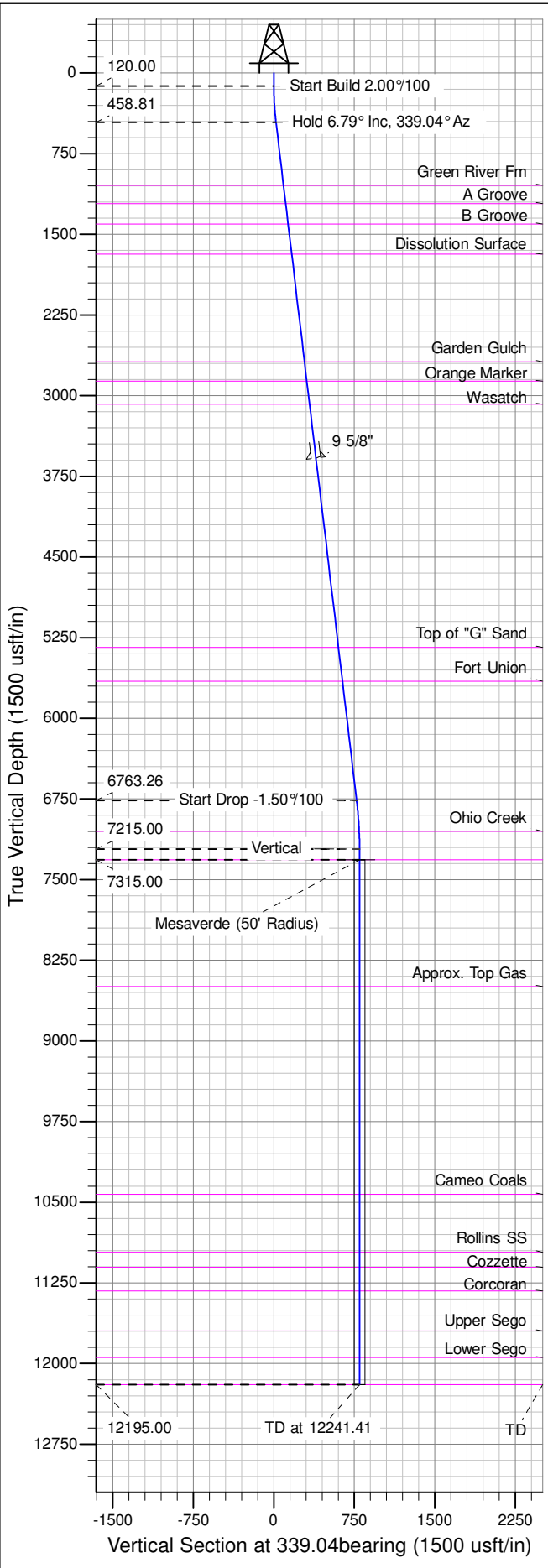
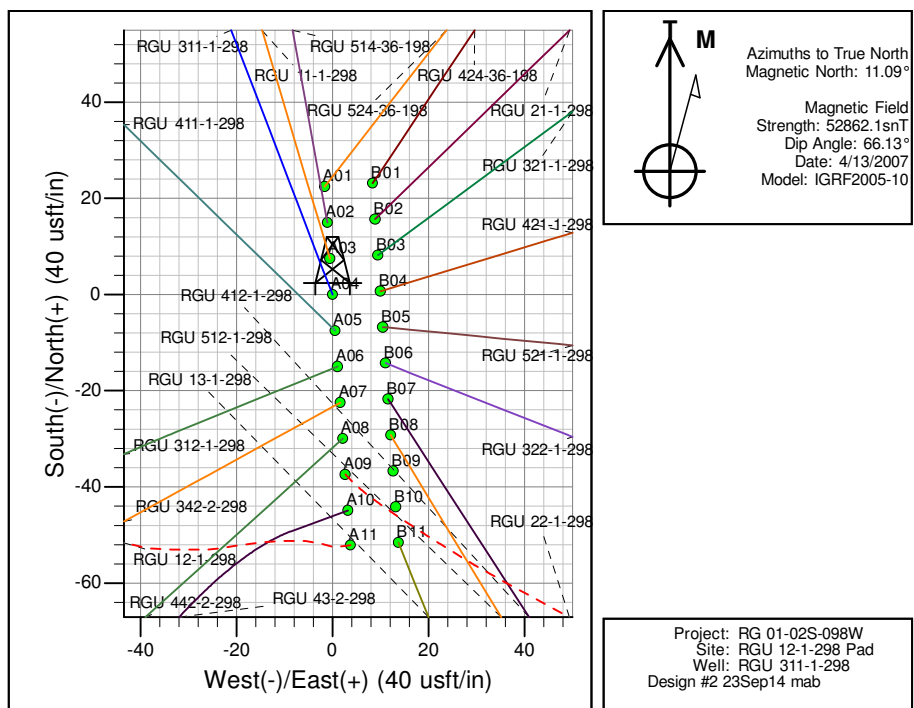
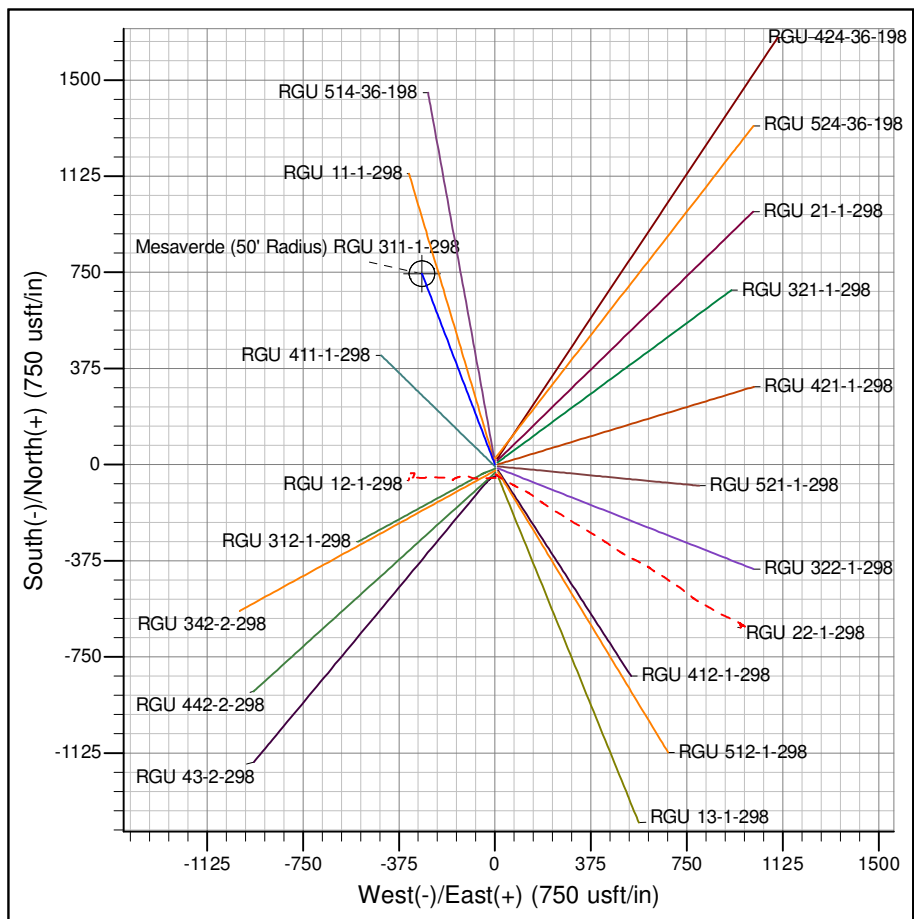




Well Name: RGU 311-1-298
Surface Location: RGU 12-1-298 Pad
North American Datum 1983 , US State Plane 1983 , Colorado Central Zone
Ground Elevation: 6624.00
+N/-S +E/-W Northing Easting Latitude Longitude Slot
0.00 0.00 1768494.10 2201147.70 39.908954 -108.347971 A04
KELLY BUSHING @ 6645.00usft (Cyclone 29 (21'KB) mab)



ANNOTATIONS									
TVD	MD	Inc	Azi	+N/-S	+E/-W	Vsect	Departure	Annotation	
120.00	120.00	0.00	0.00	0.00	0.00	0.00	0.00	Start Build	2.00°/100
458.81	459.60	6.79	339.04	18.77	-7.19	20.11	20.11	Hold 6.79° Inc,	339.04° Az
6763.26	6808.61	6.79	339.04	719.96	-275.79	770.98	770.98	Start Drop	-1.50°/100
7215.00	7261.41	0.00	0.00	744.99	-285.38	797.78	797.78	Vertical	
7315.00	7361.41	0.00	0.00	744.99	-285.38	797.78	797.78	Mesaverde	
12195.00	12241.41	0.00	0.00	744.99	-285.38	797.78	797.78	TD at	12241.41



Azimuths to True North
Magnetic North: 11.09°
Magnetic Field
Strength: 52862.1snT
Dip Angle: 66.13°
Date: 4/13/2007
Model: IGRF2005-10

Project: RG 01-02S-098W
Site: RGU 12-1-298 Pad
Well: RGU 311-1-298
Design #2 23Sep14 mab