

Antero Resources Corp. Gentry C-11 Garfield County, CO		Page: 1 Minimum of Curvature Slot Location: 1621949.14', 2384249.77' Plane of Vertical Section: 312.96°
--	--	--

Measured Depth Feet	BORE Inc Degrees	HOLE Direction Degrees	True Vertical Depth Feet	RECTANGULAR COORDINATES		LAMBERT COORDINATES		Vertical Section Feet	CLOSURES		Dogleg Severity Deg/100'
				North(-South) Feet	East(-West) Feet	Y Feet	X Feet		Distance Feet	Direction Deg	
200.00	0.00	0.00	200.00	0.00	0.00	1621949.1	2384249.8	0.00	0.00	0.00	0.00
KOP-Start Build											
300.00	2.00	312.96	299.98	1.19	-1.28	1621950.3	2384248.5	1.75	1.75	312.96	2.00
400.00	4.00	312.96	399.84	4.76	-5.11	1621953.9	2384244.7	6.98	6.98	312.96	2.00
500.00	6.00	312.96	499.45	10.70	-11.48	1621959.8	2384238.3	15.69	15.69	312.96	2.00
600.00	8.00	312.96	598.70	19.00	-20.40	1621968.1	2384229.4	27.88	27.88	312.96	2.00
700.00	10.00	312.96	697.47	29.66	-31.85	1621978.8	2384217.9	43.52	43.52	312.96	2.00
800.00	12.00	312.96	795.62	42.66	-45.81	1621991.8	2384204.0	62.60	62.60	312.96	2.00
900.00	14.00	312.96	893.06	57.99	-62.27	1622007.1	2384187.5	85.10	85.10	312.96	2.00
1000.00	16.00	312.96	989.64	75.63	-81.21	1622024.8	2384168.6	110.98	110.98	312.96	2.00
1100.00	18.00	312.96	1085.27	95.56	-102.61	1622044.7	2384147.2	140.21	140.21	312.96	2.00
1200.00	20.00	312.96	1179.82	117.74	-126.43	1622066.9	2384123.3	172.77	172.77	312.96	2.00
1300.00	22.00	312.96	1273.17	142.17	-152.66	1622091.3	2384097.1	208.60	208.60	312.96	2.00
1400.00	24.00	312.96	1365.21	168.79	-181.25	1622117.9	2384068.5	247.67	247.67	312.96	2.00
1481.55	25.63	312.96	1439.23	192.12	-206.29	1622141.3	2384043.5	281.90	281.90	312.96	2.00
End of Build											
1981.55	25.63	312.96	1890.03	339.52	-364.57	1622288.7	2383885.2	498.18	498.18	312.96	0.00
2481.55	25.63	312.96	2340.83	486.92	-522.85	1622436.1	2383726.9	714.47	714.47	312.96	0.00
2981.55	25.63	312.96	2791.63	634.32	-681.13	1622583.5	2383568.6	930.76	930.76	312.96	0.00
3481.55	25.63	312.96	3242.42	781.73	-839.41	1622730.9	2383410.4	1147.04	1147.04	312.96	0.00
3981.55	25.63	312.96	3693.22	929.13	-997.69	1622878.3	2383252.1	1363.33	1363.33	312.96	0.00
4269.67	25.63	312.96	3953.00	1014.07	-1088.90	1622963.2	2383160.9	1487.97	1487.97	312.96	0.00
Mesaverde											
4769.67	25.63	312.96	4403.80	1161.47	-1247.18	1623110.6	2383002.6	1704.25	1704.25	312.96	0.00
4902.74	25.63	312.96	4523.77	1200.70	-1289.31	1623149.8	2382960.5	1761.81	1761.81	312.96	0.00
Start Drop											
5002.74	23.63	312.96	4614.67	1229.10	-1319.80	1623178.2	2382930.0	1803.49	1803.49	312.96	2.00
5102.74	21.63	312.96	4706.96	1255.32	-1347.96	1623204.5	2382901.8	1841.97	1841.97	312.96	2.00



Minimum of Curvature
Slot Location: 1621949.14', 2384249.77'
Plane of Vertical Section: 312.96°

Measured Depth Feet	BORE Inc Degrees	HOLE Direction Degrees	True Vertical Depth Feet	RECTANGULAR COORDINATES		LAMBERT COORDINATES		Vertical Section Feet	CLOSURES		Dogleg Severity Deg/100'	
				North(-South) Feet	East(-West) Feet	Y Feet	X Feet		Distance Feet	Direction Deg		
Price Coal	5202.74	19.63	312.96	4800.54	1279.34	-1373.75	1623228.5	2382876.0	1877.20	1877.20	312.96	2.00
	5247.69	18.73	312.96	4843.00	1289.40	-1384.55	1623238.5	2382865.2	1891.97	1891.97	312.96	2.00
	5347.69	16.73	312.96	4938.24	1310.16	-1406.84	1623259.3	2382842.9	1922.42	1922.42	312.96	2.00
	5447.69	14.73	312.96	5034.49	1328.63	-1426.68	1623277.8	2382823.1	1949.54	1949.54	312.96	2.00
	5547.69	12.73	312.96	5131.63	1344.81	-1444.05	1623293.9	2382805.7	1973.27	1973.27	312.96	2.00
	5647.69	10.73	312.96	5229.53	1358.67	-1458.93	1623307.8	2382790.8	1993.61	1993.61	312.96	2.00
	5747.69	8.73	312.96	5328.09	1370.19	-1471.30	1623319.3	2382778.5	2010.51	2010.51	312.96	2.00
	5847.69	6.73	312.96	5427.18	1379.36	-1481.15	1623328.5	2382768.6	2023.96	2023.96	312.96	2.00
	5947.69	4.73	312.96	5526.67	1386.16	-1488.46	1623335.3	2382761.3	2033.95	2033.95	312.96	2.00
	6047.69	2.73	312.96	5626.45	1390.60	-1493.22	1623339.7	2382756.5	2040.46	2040.46	312.96	2.00
Top of Gas	6147.69	0.73	312.96	5726.40	1392.66	-1495.43	1623341.8	2382754.3	2043.48	2043.48	312.96	2.00
	6184.28	0.00	312.96	5763.00	1392.82	-1495.60	1623342.0	2382754.2	2043.71	2043.71	312.96	2.00
	6979.28	0.00	312.96	6558.00	1392.82	-1495.60	1623342.0	2382754.2	2043.71	2043.71	312.96	0.00
Cameo	7984.28	0.00	312.96	7563.00	1392.82	-1495.60	1623342.0	2382754.2	2043.71	2043.71	312.96	0.00
Rollins SS	8554.28	0.00	312.96	8133.00	1392.82	-1495.60	1623342.0	2382754.2	2043.71	2043.71	312.96	0.00
Cozzette	8809.28	0.00	312.96	8388.00	1392.82	-1495.60	1623342.0	2382754.2	2043.71	2043.71	312.96	0.00
Corcoran	9084.28	0.00	312.96	8663.00	1392.82	-1495.60	1623342.0	2382754.2	2043.71	2043.71	312.96	0.00
TD	Final Station Closure Distance: 2043.71' Direction: 312.96°											

Antero Resources Corp.

Gentry C-11
Garfield County, CO



Horizontal Plan

1" = 1000'

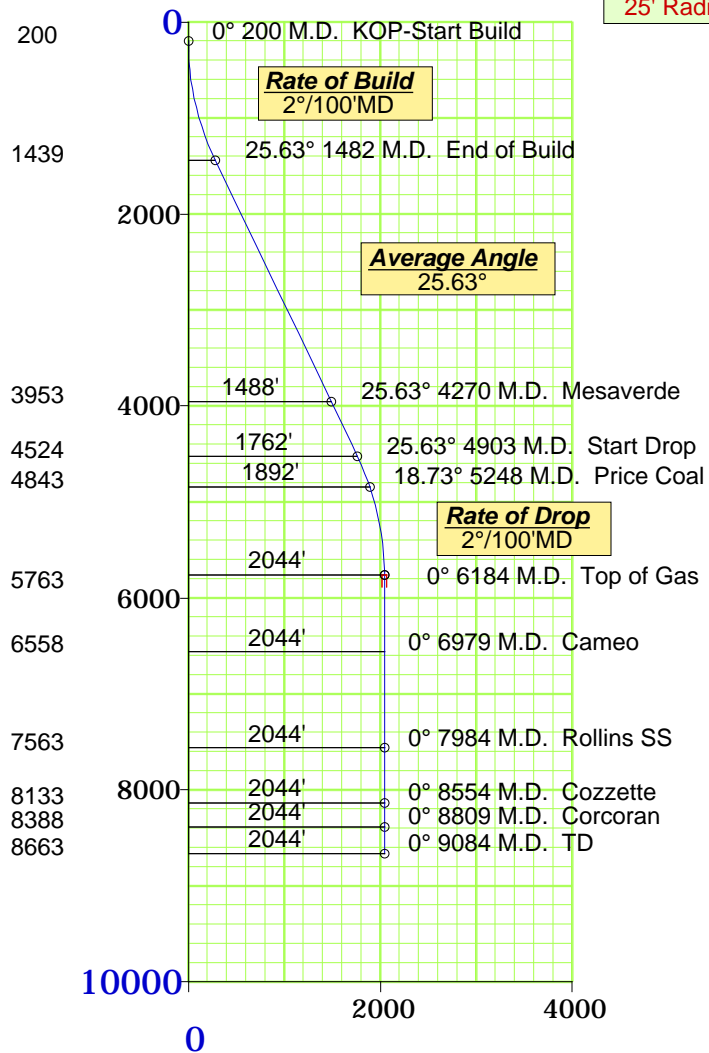


Plane of Proposal

312.96° Azimuth

Vertical Section

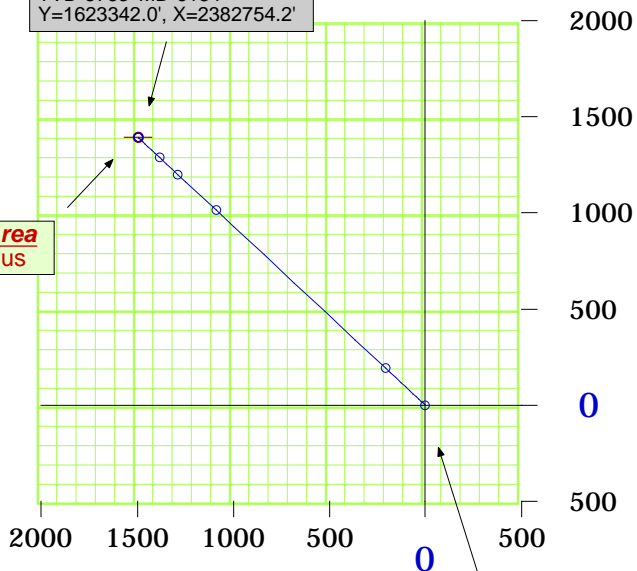
1" = 2000'



Top of Gas

2043.71' Displacement
@ 312.96° Azimuth
North-1392.82' West-1495.6'
TVD-5763' MD-6184'
Y=1623342.0', X=2382754.2'

Target Area
25' Radius



Formation	TVD
Mesaverde	3953
Price Coal	4843
Top Gas	5763
Cameo	6558
Rollins SS	7563
Cozzette	8133
Corcoran	8388
TD	8663



09-18-2007