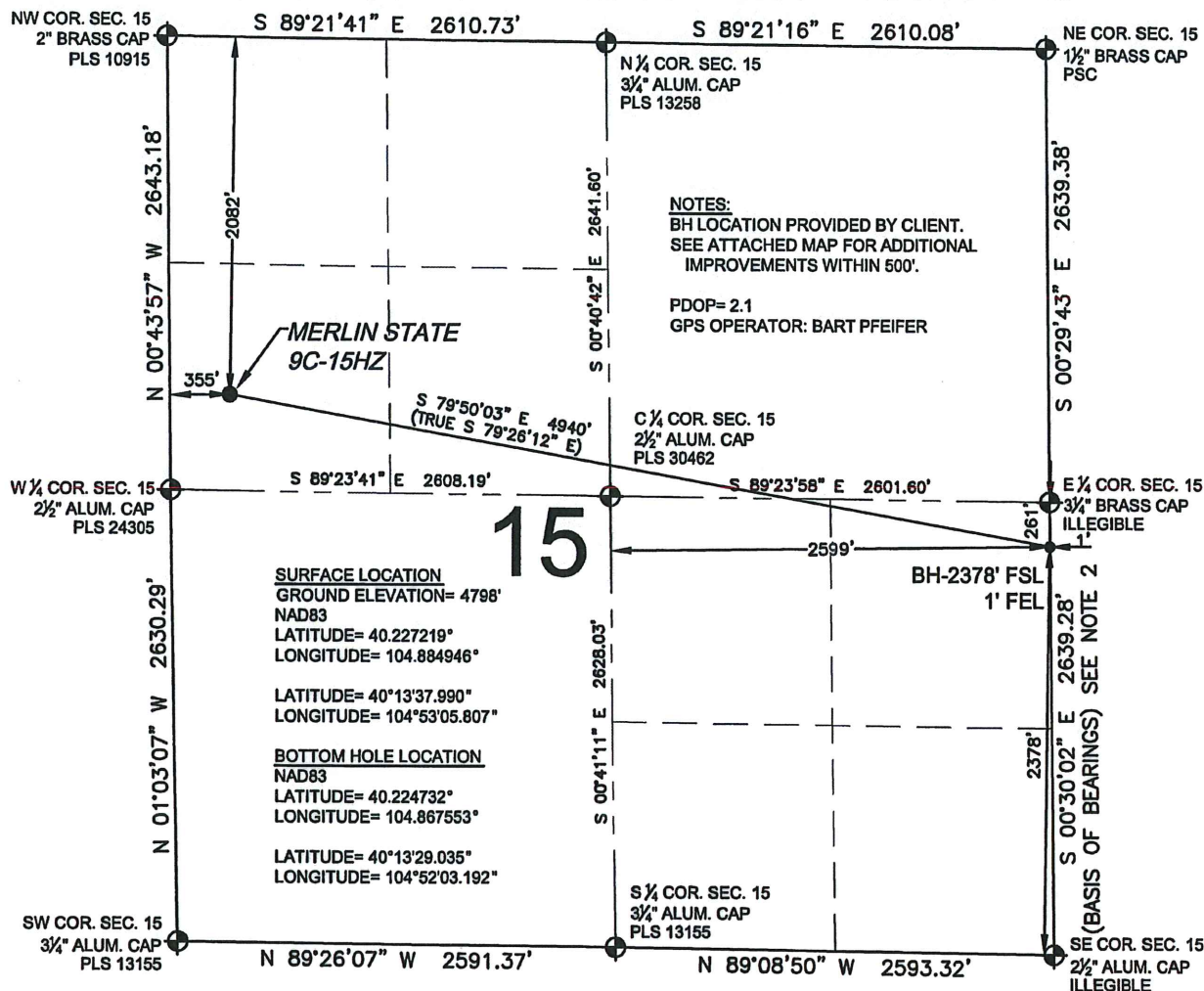


# WELL LOCATION CERTIFICATE: MERLIN STATE 9C-15HZ

SECTION 15, TOWNSHIP 3 NORTH, RANGE 67 WEST, 6TH P.M.



WELL MERLIN STATE 9C-15HZ TO BE LOCATED 2082' FNL AND 355' FWL

## LEGEND

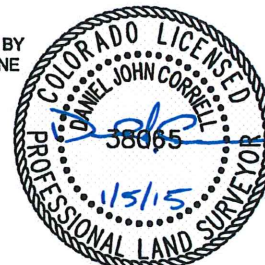
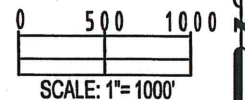
- ⊕ = EXISTING MONUMENT
- ⊙ = PROPOSED WELL
- BH = BOTTOM HOLE
- ⊕ = BOTTOM HOLE
- ⊙ = EXISTING WELL
- = CALCULATED POSITION

## NOTES:

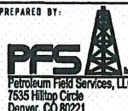
- THIS FIELD SURVEY CONFORMS TO THE MINIMUM STANDARDS SET BY THE C.O.G.C.C., RULE NO. 215
- BEARINGS AND DISTANCE SHOWN HEREON ARE GRID AND BASED ON THE COLORADO STATE PLANE COORDINATE SYSTEM, NAD 83/2011 BETWEEN MONUMENTS AS LABELED HEREON AND ELEVATIONS SHOWN ARE NAVD 88, AS DERIVED BY GPS OBSERVATIONS.
- GRID DISTANCES ARE SHOWN, AS MEASURED IN THE FIELD, WITH TIES TO WELLS MEASURED PERPENDICULAR TO SECTION LINES.
- ALL LINES SHOWN THAT ARE WITHOUT DIMENSION SHOULD BE CONSIDERED SCALED AND ONLY REPRESENT A GRAPHICAL DEPICTION OF THE APPROXIMATE LOCATION OF SAID LINE.

I, DANIEL JOHN CORRIELL, A LICENSED PROFESSIONAL LAND SURVEYOR IN THE STATE OF COLORADO DO HEREBY CERTIFY TO **KERR-MCGEE OIL & GAS ONSHORE LP**, THAT THE SURVEY AND WELL LOCATION CERTIFICATE SHOWN HEREON WERE DONE BY ME OR UNDER MY DIRECT SUPERVISION AND THAT THE DRAWING SHOWN HEREON ACCURATELY DEPICTS THE PROPOSED LOCATION OF THE WELL. THIS CERTIFICATE DOES NOT REPRESENT A LAND SURVEY PLAT OR IMPROVEMENT SURVEY PLAT AS DEFINED BY C.R.S. 38-51-102 AND CANNOT BE RELIED UPON TO DETERMINE OWNERSHIP.

DANIEL JOHN CORRIELL, PLS 38065  
COLORADO LICENSED PROFESSIONAL LAND SURVEYOR  
FOR AND ON BEHALF OF P.F.S., LLC



PREPARED BY:



FIELD DATE:

09-04-14

DRAWING DATE:

01-02-15

BY:

MDCA

CHECKED:

SMF

SURFACE LOCATION:

SW 1/4 NW 1/4,

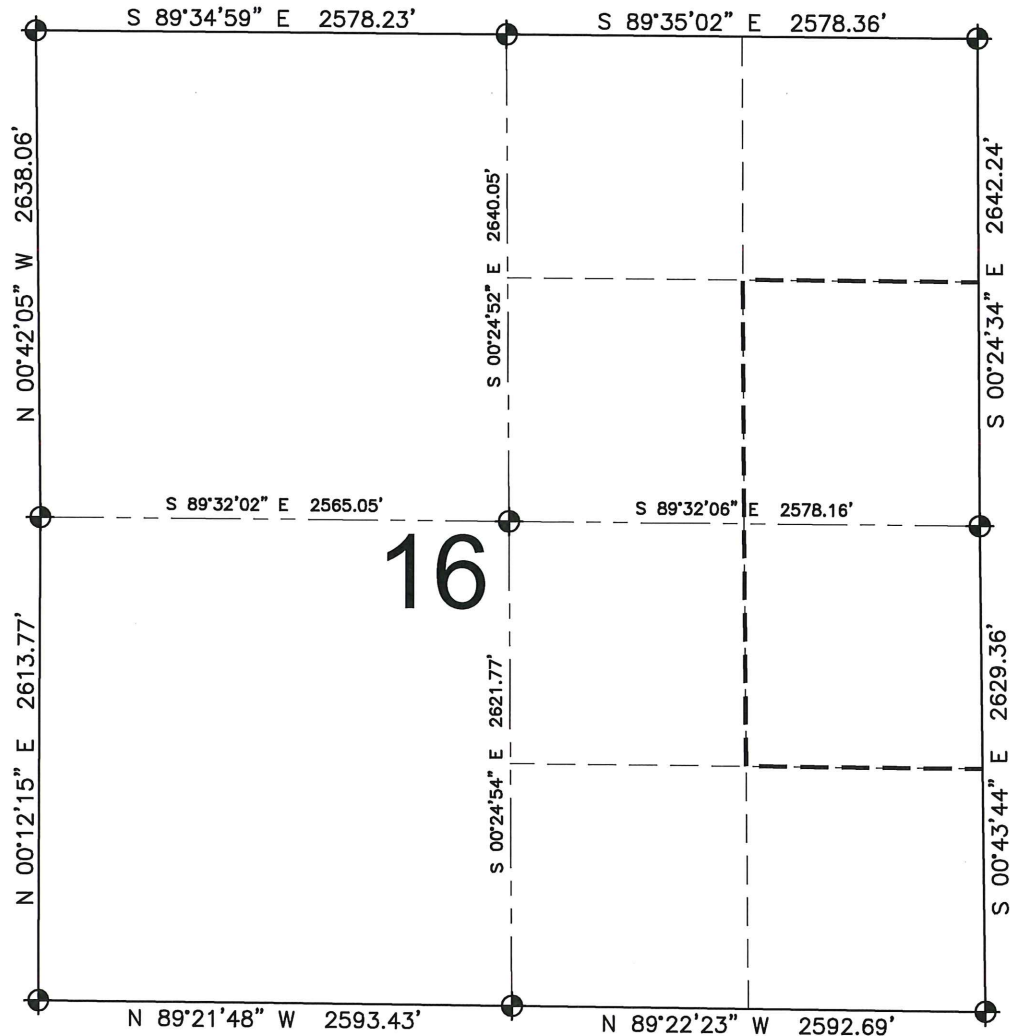
SEC. 15, T3N, R67W, 6TH P.M.

WELD COUNTY, COLORADO

NOTICE: ACCORDING TO COLORADO LAW YOU MUST COMMENCE ANY LEGAL ACTION BASED UPON ANY DEFECT IN THIS SURVEY WITHIN THREE YEARS AFTER YOU FIRST DISCOVER SUCH DEFECT. IN NO EVENT MAY ANY ACTION BASED UPON ANY DEFECT IN THIS SURVEY BE COMMENCED MORE THAN TEN YEARS FROM THIS SAID DATE OF THIS CERTIFICATION SHOWN HEREON.

# MERLIN STATE 9C-15HZ

## SECTION 16, TOWNSHIP 3 NORTH, RANGE 67 WEST, 6TH P.M.



### LEGEND

- ⊕ = EXISTING MONUMENT    ⊕ = BOTTOM HOLE
- = PROPOSED HEEL        BH = BOTTOM HOLE
- = CALCULATED POSITION

### NOTES:

- THIS DOCUMENT IS NOT A LAND SURVEY PLAT OR IMPROVEMENT SURVEY PLAT. THIS DOCUMENT DOES NOT REFLECT A FIELD SURVEY. SECTION BREAKDOWN, MONUMENTATION AND HORIZONTAL POSITIONS SHOWN ARE BASED ON THE HEEL AND BOTTOM HOLE LOCATION PROVIDED BY ANADARKO PETROLEUM CORPORATION

### HEEL LOCATION

UTM13  
 LATITUDE= 40.225195°  
 LONGITUDE= 104.884766°  
  
 LATITUDE= 40°13'30.704"  
 LONGITUDE= 104°53'05.156"

### QRT/QRT SECTIONS WITHIN PATH OF THE HARDLINE

SENE, SEC. 16  
 NESE, SEC. 16

### BOTTOM HOLE LOCATION

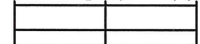
NAD83  
 LATITUDE= 40.224732°  
 LONGITUDE= 104.867553°  
  
 LATITUDE= 40°13'29.035"  
 LONGITUDE= 104°52'03.192"

### AVAILABLE FOOTAGE

6875'



0 500 1000



SCALE: 1"= 1000'

PREPARED BY:



DRAWING DATE:  
01-02-15

BY: MDCA  
 CHECKED: SMF

HEEL LOCATION:  
 NW 1/4 SW 1/4,  
 SEC. 15, T3N, R67W, 6TH P.M.  
 WELD COUNTY, COLORADO