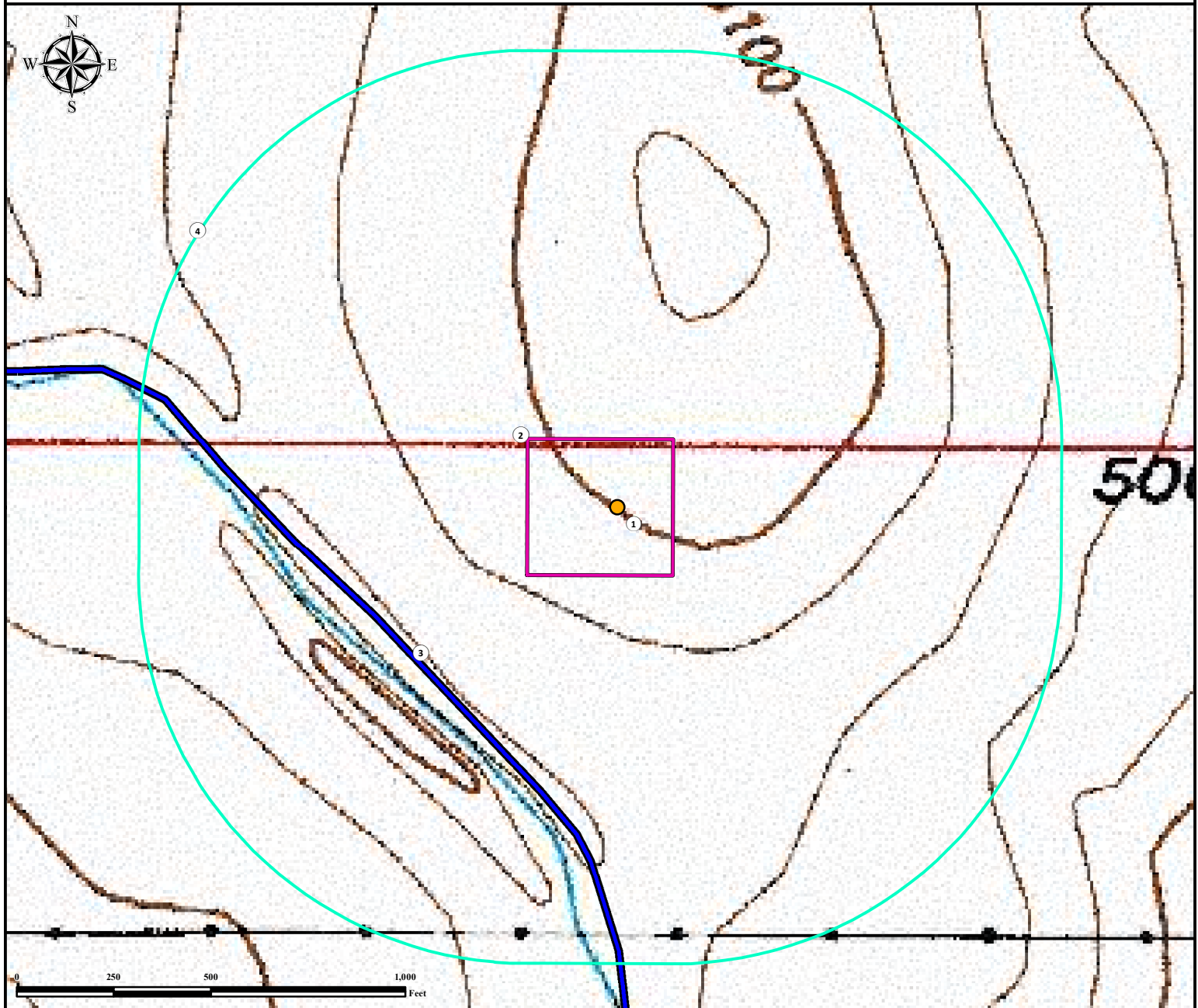


Hydrology Map

ROWE 01N-65W-26

WELL PAD

NE¼ NW¼ SECTION 26, TOWNSHIP 1 NORTH, RANGE 65 WEST OF THE 6TH PRINCIPAL MERIDIAN



1. Proposed Well ROWE 01N-65W-26-8N.
2. Operational Disturbance Area.
3. Canal is $\pm 646'$ SW.
4. 1000' Radius.

Legend

- | | | | | | |
|---|---------------|---|------------------|---|-------|
|  | Proposed Well |  | 1000' Radius |  | Canal |
| | |  | Disturbance Area | | |

Reference Location

** ROWE 01N-65W-26-8N **

Lat: 40.029025° Long: -104.632485° (NAD83)
Elevation: 5101 Feet



Use our resources to find yours!
www.petro-fs.com
(303) 928-7128

Field Date: 8/21/2014
Drafting Date: 1/16/2015
Drafted By: DRF
Checked By: FMB
Revision: 1

Data Sources:
- Topo courtesy USGS
- Water features courtesy of NHD

Prepared for:

