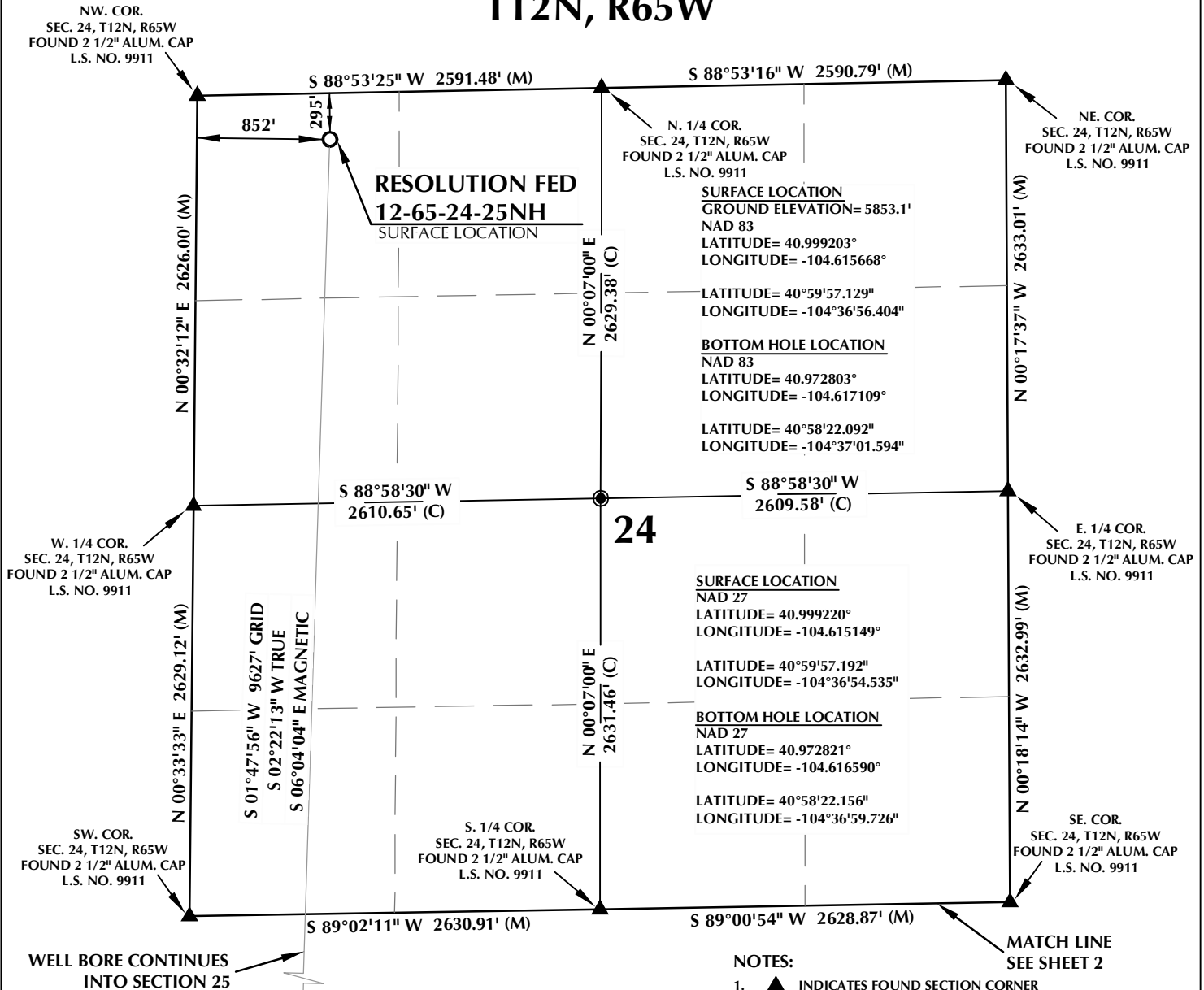


T12N, R65W

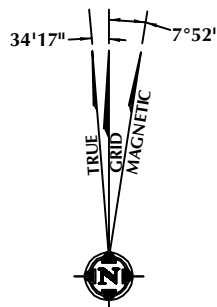


CERTIFICATE OF SURVEYOR:

THIS IS TO CERTIFY THAT THE ABOVE PLAT WAS PREPARED FROM FIELD NOTES OF ACTUAL SURVEY MADE BY ME OR UNDER MY SUPERVISION AND THAT THE SAME ARE TRUE AND CORRECT TO THE BEST OF MY KNOWLEDGE AND BELIEF. THIS CERTIFICATE DOES NOT REPRESENT A LAND SURVEY PLAT OR IMPROVEMENT SURVEY PLAT AS DEFINED BY C.S. 38-51-102 AND CANNOT BE RELIED UPON TO DETERMINE OWNERSHIP.

Benjamin J. Reenders
 BENJAMIN J. REENDERS
 PROFESSIONAL LAND SURVEYOR
 COLORADO REGISTRATION NUMBER 4836
 12/30/14

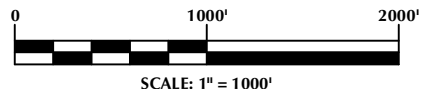
NOTICE:
 ACCORDING TO COLORADO STATE LAW YOU MUST COMMENCE ANY LEGAL ACTION BASED UPON ANY DEFECT IN THIS SURVEY WITHIN THREE YEARS AFTER YOU FIRST DISCOVER SUCH DEFECT. IN NO EVENT MAY ANY ACTION BASED UPON ANY DEFECT IN THIS SURVEY BE COMMENCED MORE THAN TEN YEARS FROM THE DATE ON THE CERTIFICATION SHOWN HEREON.



NOTE:
 MAGNETIC NORTH IS CURRENT AS OF 1/5/2015.
 MAGNETIC NORTH CHANGES WEST 0°06' PER YEAR.

NOTES:

- ▲ INDICATES FOUND SECTION CORNER
- INDICATES CALCULATED CORNER
- ELEVATION BASED ON NAVD88 (GEOID09)
- BASIS OF BEARING DERIVED FROM COLORADO COORDINATE SYSTEM 1983 NORTH ZONE UNLESS OTHERWISE NOTED.
- ALL MEASURED DISTANCES ARE GRID.
COMBINED SCALE FACTOR: .99975950
- OPERATOR: NICK ROADIFER / PDOP = 1.5
- SEE ADDENDUM TO WELL LOCATION CERTIFICATE FOR EXISTING IMPROVEMENTS WITHIN 500' OF THE WELL PAD.
- WELL FOOTAGES ARE MEASURED AT RIGHT ANGLES TO THE SECTION LINES.
- THE BOTTOM OF HOLE BEARS S01°47'56"W 9627' FROM THE SURFACE LOCATION.



WELL PAD - RESOLUTION FED 12-65-24-25NH

RESOLUTION FED 12-65-24-25NH
WELL LOCATION CERTIFICATE
 295' FNL & 852' FWL NWNW (SURFACE)
 LOCATED IN SECTION 24
 600' FSL & 600' FWL SWSW (BOTTOM)
 LOCATED IN SECTION 25
 T12N, R65W, 6TH P.M.
 WELD COUNTY, COLORADO

Anadarko E&P
Onshore LLC
 1099 18th Street
 Denver, Colorado 80202



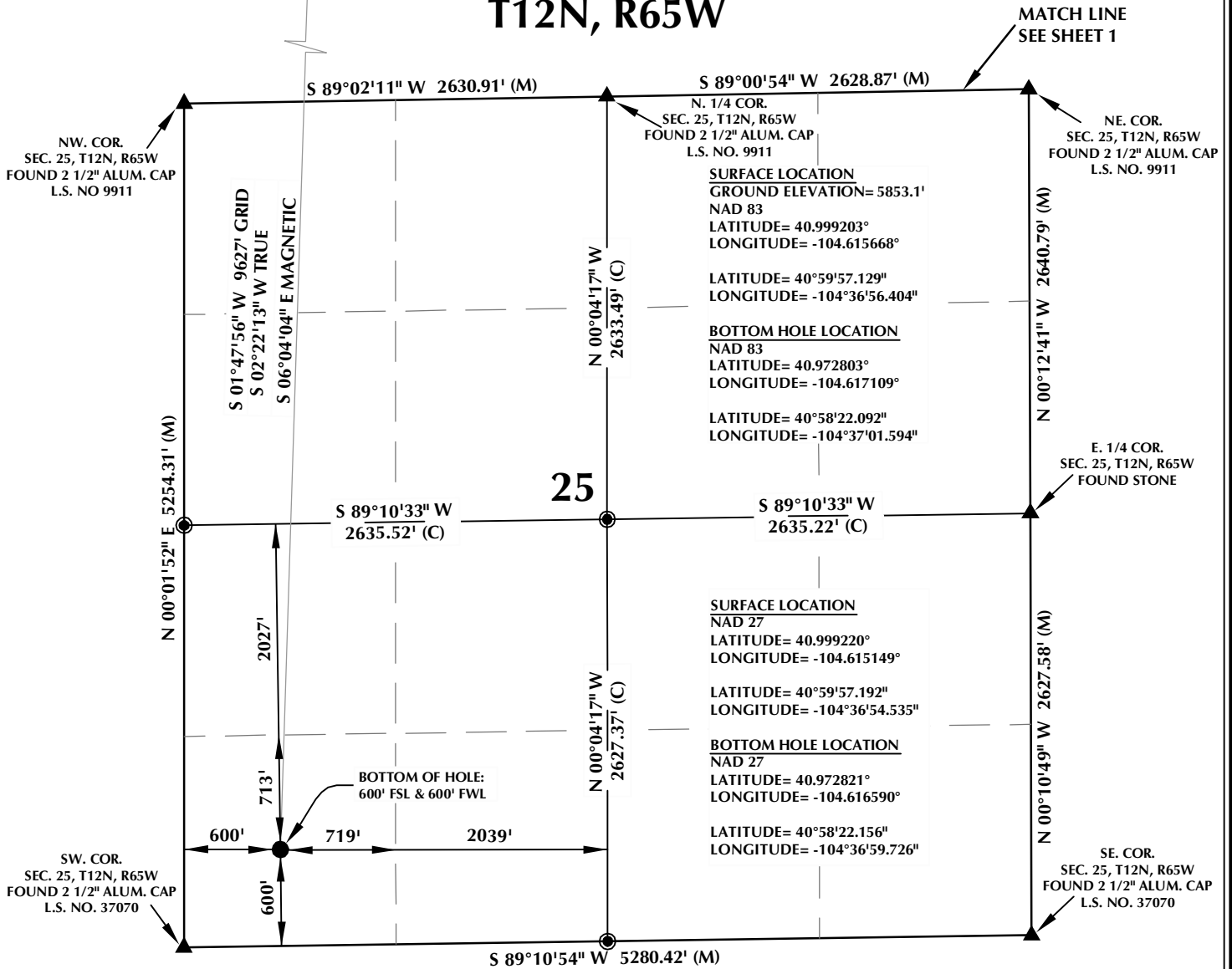
CONSULTING, LLC

SHERIDAN OFFICE
 2155 North Main Street
 Sheridan, Wyoming 82801
 Phone 307-674-0609

LOVELAND OFFICE
 1635 Foxtrail Drive, Suite 204
 Loveland, Colorado 80538
 Phone 970-776-4331

DRAFTED BY: MDZ	CHECKED BY: BJR	SHEET NO: 1
DATE DRAFTED: 12/30/14	DATE SURVEYED: 12/16/14	1 OF 2
REVISED:	FILE NAME: 14-52	

T12N, R65W

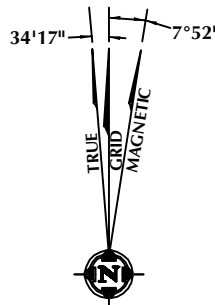


CERTIFICATE OF SURVEYOR:

THIS IS TO CERTIFY THAT THE ABOVE PLAT WAS PREPARED FROM FIELD NOTES OF ACTUAL SURVEY MADE BY ME OR UNDER MY SUPERVISION AND THAT THE SAME ARE TRUE AND CORRECT TO THE BEST OF MY KNOWLEDGE AND BELIEF. THIS CERTIFICATE DOES NOT REPRESENT A LAND SURVEY PLAT OR IMPROVEMENT SURVEY PLAT AS DEFINED BY C.S. 38-51-102 AND CANNOT BE RELIED UPON TO DETERMINE OWNERSHIP.

Benjamin J. Reenders
BENJAMIN J. REENDERS
PROFESSIONAL LAND SURVEYOR
COLORADO REGISTRATION NUMBER 483305

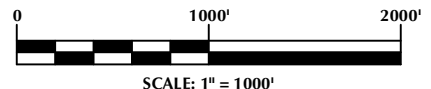
NOTICE:
ACCORDING TO COLORADO STATE LAW YOU MUST COMMENCE ANY LEGAL ACTION BASED UPON ANY DEFECT IN THIS SURVEY WITHIN THREE YEARS AFTER YOU FIRST DISCOVER SUCH DEFECT. IN NO EVENT MAY ANY ACTION BASED UPON ANY DEFECT IN THIS SURVEY BE COMMENCED MORE THAN TEN YEARS FROM THE DATE ON THE CERTIFICATION SHOWN HEREON.



NOTE:
MAGNETIC NORTH IS CURRENT AS OF 1/5/2015.
MAGNETIC NORTH CHANGES WEST 0°06' PER YEAR.

NOTES:

- ▲ INDICATES FOUND SECTION CORNER
- INDICATES CALCULATED CORNER
- ELEVATION BASED ON NAVD88 (GEOID09)
- BASIS OF BEARING DERIVED FROM COLORADO COORDINATE SYSTEM 1983 NORTH ZONE UNLESS OTHERWISE NOTED.
- ALL MEASURED DISTANCES ARE GRID.
COMBINED SCALE FACTOR: .99975950
- OPERATOR: NICK ROADIFER / PDOP = 1.5
- SEE ADDENDUM TO WELL LOCATION CERTIFICATE FOR EXISTING IMPROVEMENTS WITHIN 500' OF THE WELL PAD.
- WELL FOOTAGES ARE MEASURED AT RIGHT ANGLES TO THE SECTION LINES.
- THE BOTTOM OF HOLE BEARS S01°47'56"W 9627' FROM THE SURFACE LOCATION.



WELL PAD - RESOLUTION FED 12-65-24-25NH

RESOLUTION FED 12-65-24-25NH
WELL LOCATION CERTIFICATE
295' FNL & 852' FWL NWNW (SURFACE)
LOCATED IN SECTION 24
600' FSL & 600' FWL NWSW (BOTTOM)
LOCATED IN SECTION 25
T12N, R65W, 6TH P.M.
WELD COUNTY, COLORADO

**Anadarko E&P
Onshore LLC**
1099 18th Street
Denver, Colorado 80202

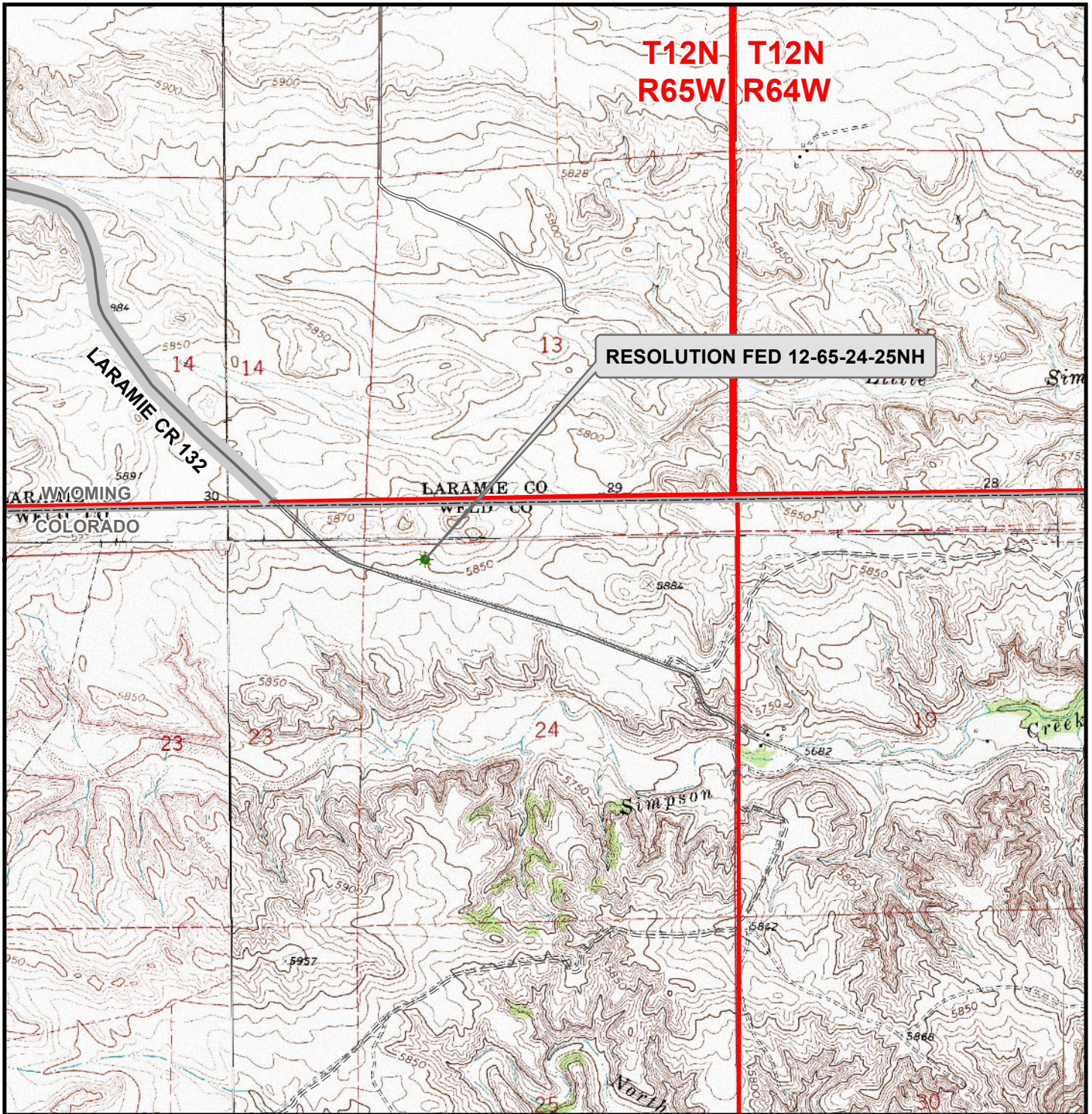


CONSULTING, LLC

SHERIDAN OFFICE
2155 North Main Street
Sheridan, Wyoming 82801
Phone 307-674-0609

LOVELAND OFFICE
1635 Foxtrail Drive, Suite 204
Loveland, Colorado 80538
Phone 970-776-4331

DRAFTED BY: MDZ	CHECKED BY: BJR	SHEET NO: 2
DATE DRAFTED: 12/30/14	DATE SURVEYED: 12/16/14	2 OF 2
REVISED:	FILE NAME: 14-52	



Legend

- ★ Well - Fed - Proposed
 Road - Primitive - Existing
 Road - County - Existing
 Road - Improved - Existing
 Road - Highway - Existing

WELL PAD - RESOLUTION FED 12-65-24-25NH

GENERAL LOCATION MAP
RESOLUTION FED 12-65-24-25NH
LOCATED IN SECTION 24
T12N, R65W, 6th P.M.
WELD COUNTY, COLORADO

Anadarko E&P
Onshore LLC

1099 18th Street
 Denver, CO 80202



CONSULTING, LLC

SHERIDAN OFFICE
 2155 North Main Street
 Sheridan, Wyoming 82801
 Phone 307-674-0609

LOVELAND OFFICE
 1635 Foxtail Drive, Suite 204
 Loveland, Colorado 80538
 Phone 970-776-4331



SCALE: 1" = 2,000ft

NAD83 CO-Nft

DRAWN: TL

DATE: 30 Dec 2014

REVISED:

DATE: