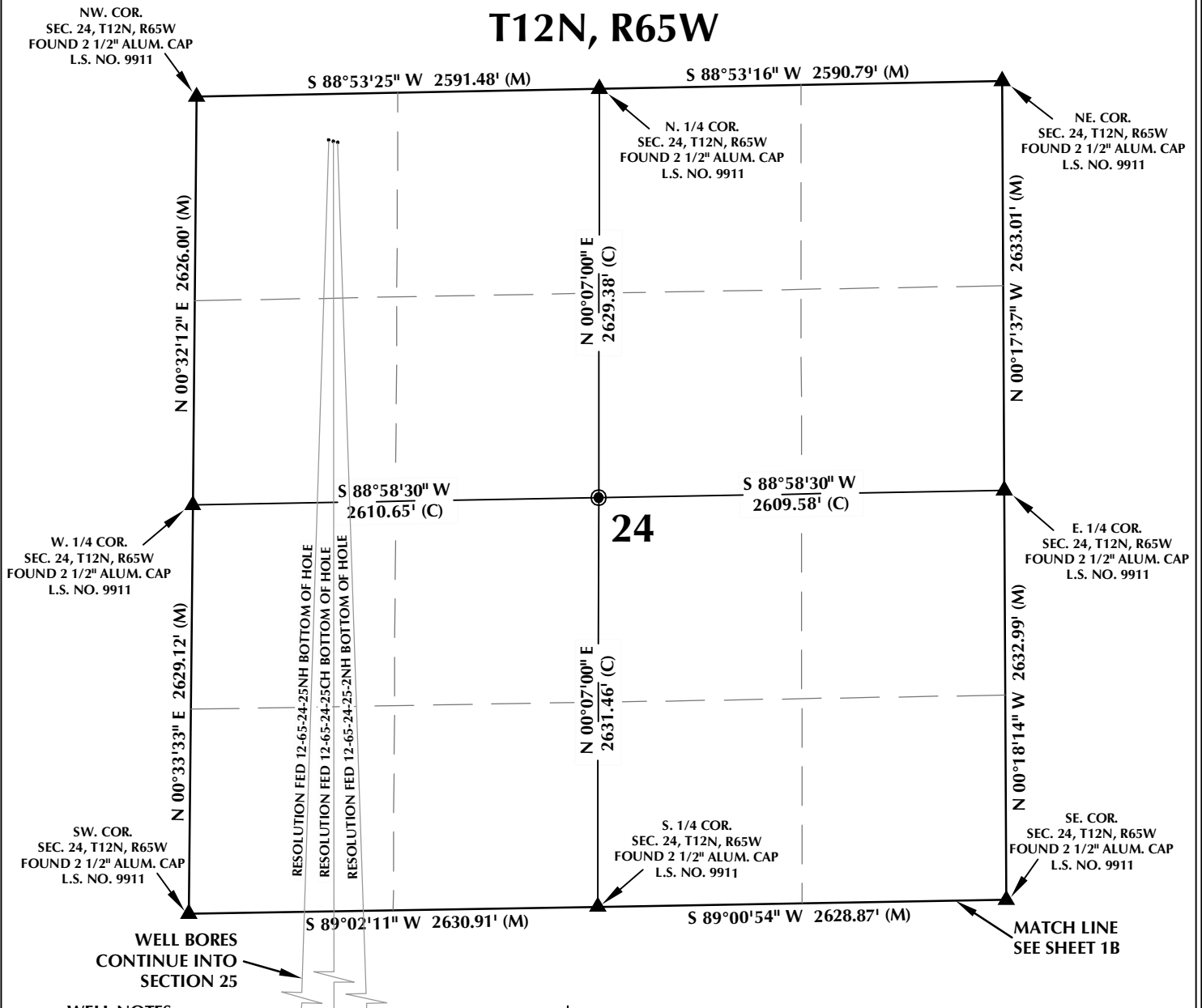


RESOLUTION FED 12-65-24-25NH T12N, R65W

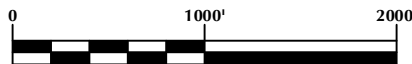


WELL NOTES:

RESOLUTION FED 12-65-24-25NH
SURFACE: 295' FNL, 852' FWL
BOTTOM HOLE: 600' FSL, 600' FWL
RESOLUTION FED 12-65-24-25CH
SURFACE: 303' FNL, 881' FWL
BOTTOM HOLE: 600' FSL, 940' FWL
RESOLUTION FED 12-65-24-25-2NH
SURFACE: 311' FNL, 910' FWL
BOTTOM HOLE: 600' FSL, 1280' FWL

NOTES:

- ▲ INDICATES FOUND SECTION CORNER
- INDICATES CALCULATED CORNER
- BASIS OF BEARING DERIVED FROM COLORADO COORDINATE SYSTEM 1983 NORTH ZONE UNLESS OTHERWISE NOTED.
- ALL MEASURED DISTANCES ARE GRID.
COMBINED SCALE FACTOR: .99975950
- WELL FOOTAGES ARE MEASURED AT RIGHT ANGLES TO THE SECTION LINES.



SCALE: 1" = 1000'

WELL PAD - RESOLUTION FED 12-65-24-25NH

MULTI-WELL PLAN
RESOLUTION FED 12-65-24-25NH,
RESOLUTION FED 12-65-24-25CH &
RESOLUTION 12-65-24-25-2NH
LOCATED IN SECTIONS 24 & 25
T12N, R65W, 6TH P.M.
WELD COUNTY, COLORADO

Anadarko E&P
Onshore LLC
1099 18th Street
Denver, Colorado 80202



CONSULTING, LLC

SHERIDAN OFFICE
2155 North Main Street
Sheridan, Wyoming 82801
Phone 307-674-0609

LOVELAND OFFICE
1635 Foxtrail Drive, Suite 204
Loveland, Colorado 80538
Phone 970-776-4331

DRAFTED BY:	LMO	CHECKED BY:	BJR	SHEET NO:
DATE DRAFTED:	12/30/14	DATE SURVEYED:	12/16/14	1A
REVISED:		FILE NAME:	14-52	1A OF 1

\\ANADARKO\2014\52_RESOLUTION_PROSPECT_WELLS_CO\PLATS\RESOLUTION 12-65-25-24\RESOLUTION 12-65-24-25 MULTI-WELL PLAN.dwg, 1/6/2015 4:16:17 PM, lisa



NOTES:

-

DRAFTED BY: LMO	CHECKED BY: BJR	SHEET NO: 1B 1B OF 1
DATE DRAFTED: 12/30/14	DATE SURVEYED: 12/16/14	
REVISED:	FILE NAME: 14-52	