

THIS DRAWING AND THE DESIGN IT COVERS ARE CONFIDENTIAL AND REMAIN THE PROPERTY OF ANADARKO PETROLEUM CORPORATION AND SHALL NOT BE DISCLOSED TO OTHERS OR REPRODUCED IN ANY MANNER OR USED FOR ANY PURPOSE WHATSOEVER EXCEPT BY WRITTEN PERMISSION BY THE OWNER.



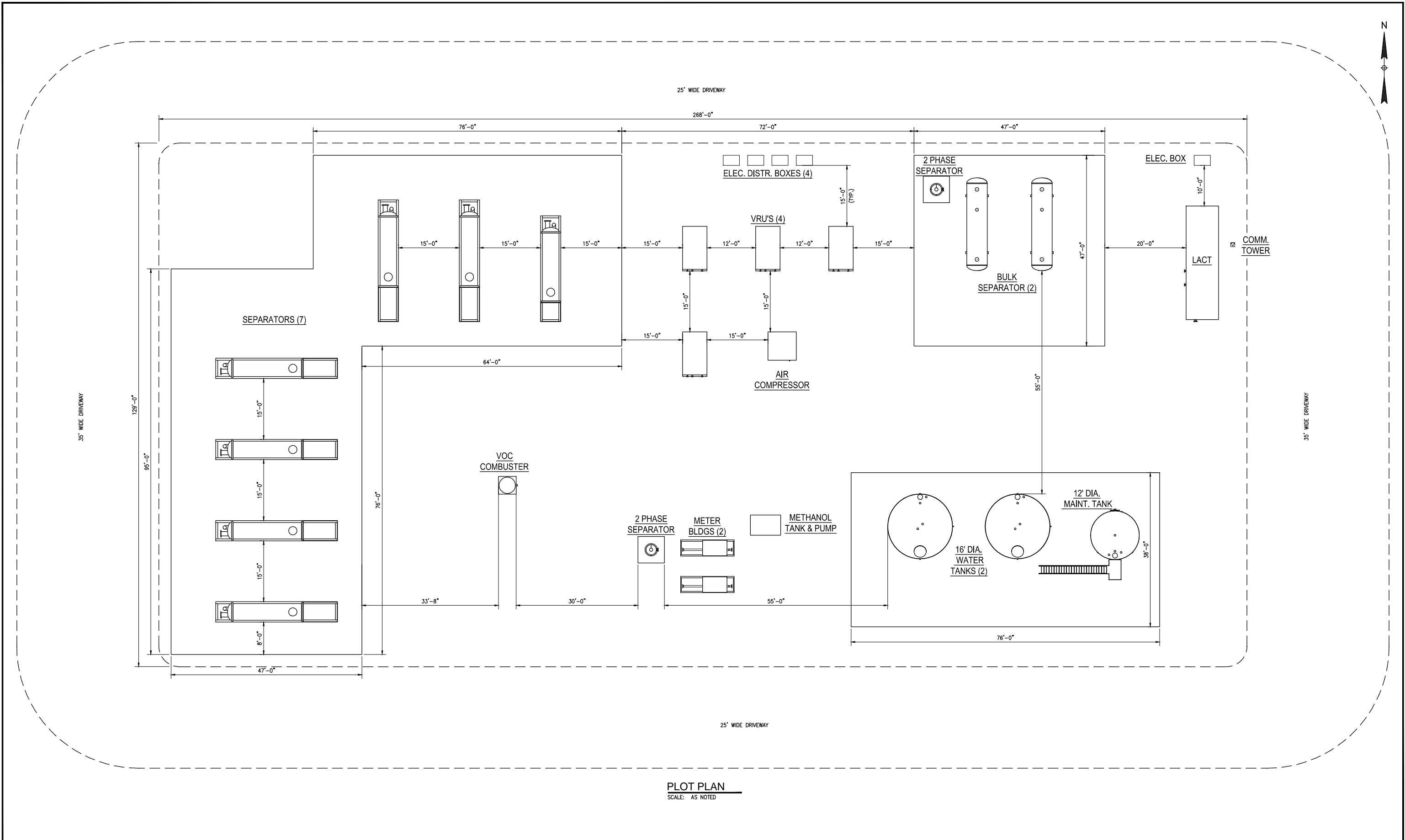
NOTES:
1. EQUIPMENT PLACEMENT IS APPROXIMATE AND SUBJECT TO MINOR MODIFICATION DUE TO SITE SPECIFIC CIRCUMSTANCES.

REFERENCE DRAWINGS			REVISIONS					
TRDT-GA-101	TROUDT - PLOT PLAN W/ EQUIPMENT LOCATIONS		ISSUED FOR PERMIT	MAK	01/20/15	MWW	01/20/15	
DWG. NO.	TITLE	NO.	DESCRIPTION	BY	DATE	CHK.	DATE	APPR. DATE



PIPELINE STRATEGIES & INTEGRITY

GREATER WATTENBERG AREA TROUDT 14N-33HZ AREA PLAN			
DRAWN BY: MAK	CREATION DATE: 12/19/14	AFE No.: TBD	
APPROVED:	APPR. DATE:		
	DWG. No.:	TRDT-GA-100	
SCALE: AS NOTED		SHEET No. 1 OF 1	



FILE LOCATION: B:\Engineering\Projects\Anadarko\Greater Wattenburg Area\Facility And Perm\Treat\ TROT-CA-101.dwg

DRAWN BY: MAK	CREATION DATE: 12/16/14	W.O. No.: TBD
APPROVED:	APPROVAL DATE:	
SCALE: 1"=15' (FULL SIZE)	DWG. No. TRDT-GA-101	SHEET No. 1 OF 1