



RICO LC29-72-1HNA

MD
1" : 100'

Company: NOBLE ENERGY
Well Name: RICO LC29-72-1HNA
API: 05-123-38619
Rig Id: H&P 326
State: CO
County/Parish: WELD
Country: USA
Survey Company: DrilTech L.L.C.
Job number: 2014-272-DCDT-CO

Log measurements:
Depth measured from: 627
Maximum temperature: 212

Depth Date
Start: 627 ft 6/24/14
End: 10200 ft 6/29/2014

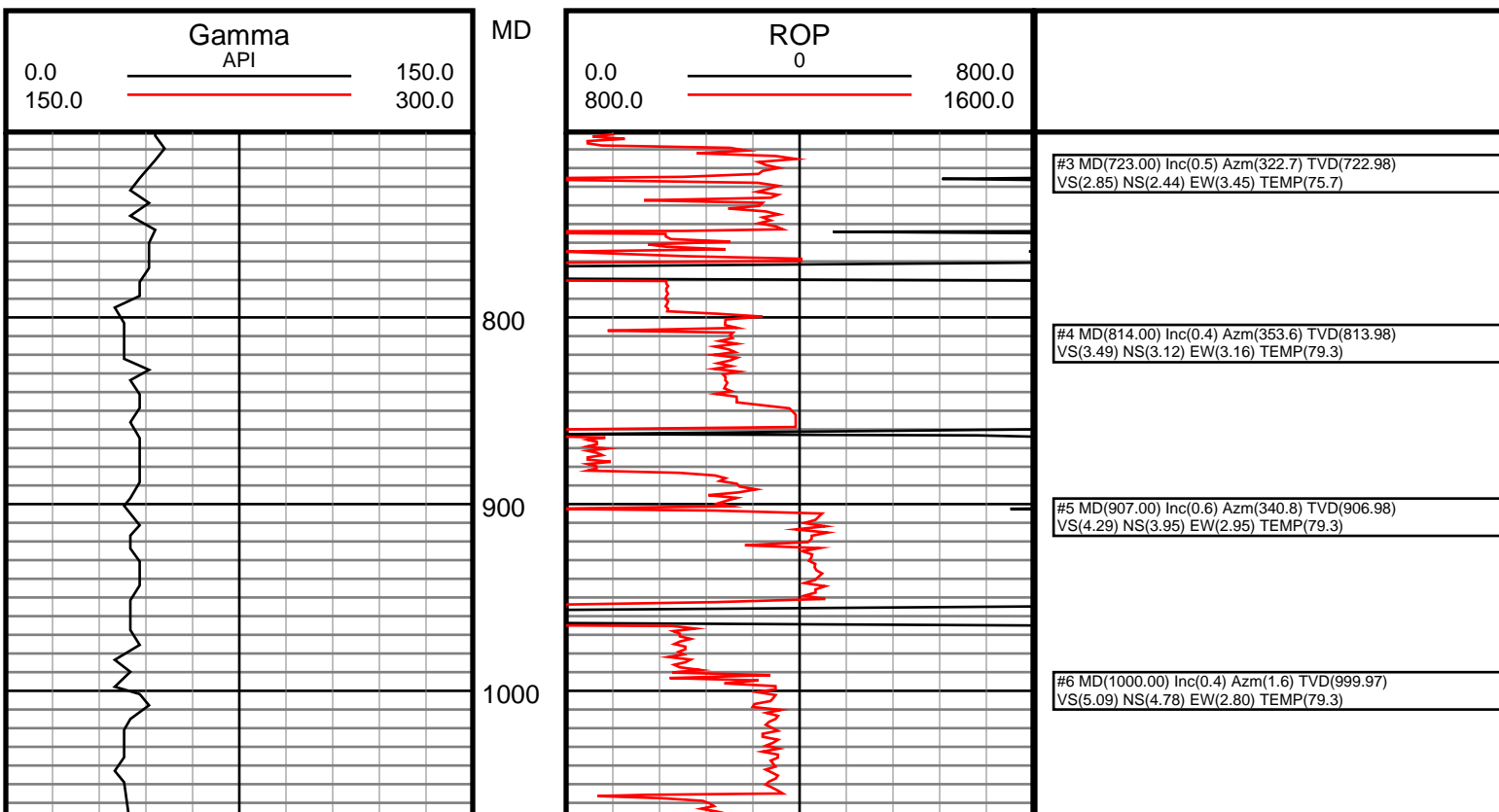
Casing Depth Size
Surface: 627 9.58
Intermediate: 6513 7

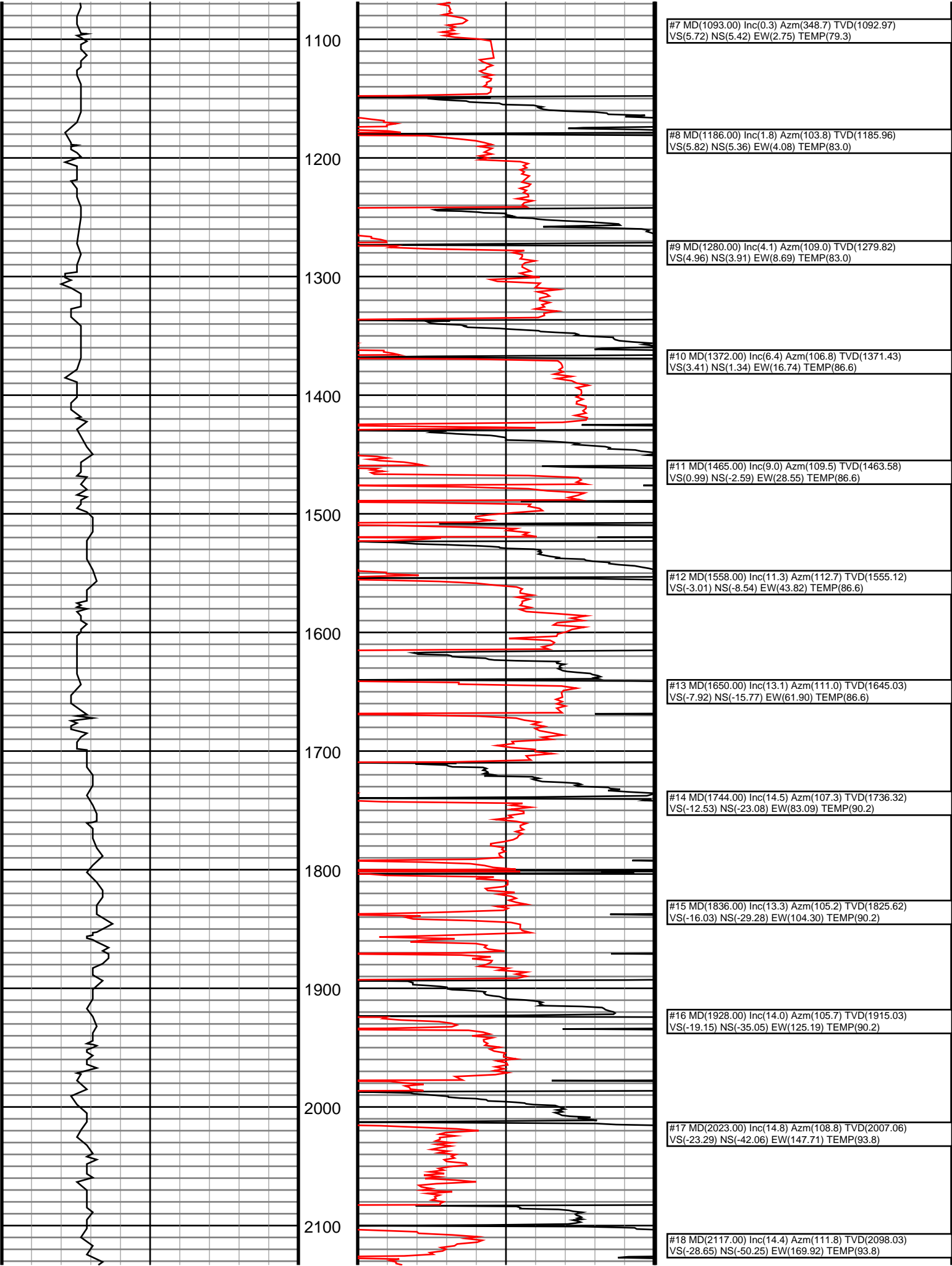
Mud Type: Water Base
Density: 10
Viscosity: 38
Rm: Rmf: Rmc:

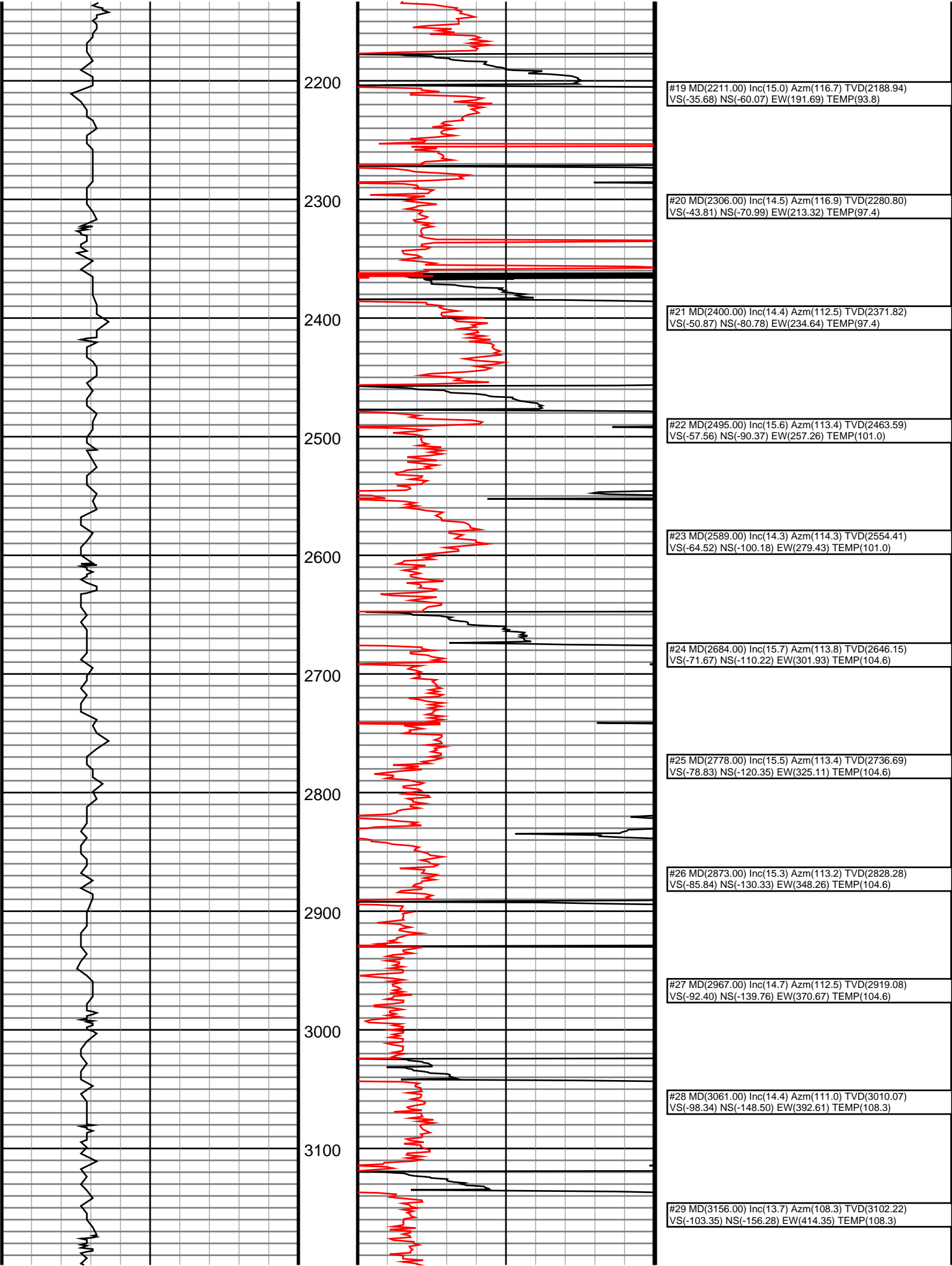
Elevations
KB: 4865
GL: 4865
DF: 4895

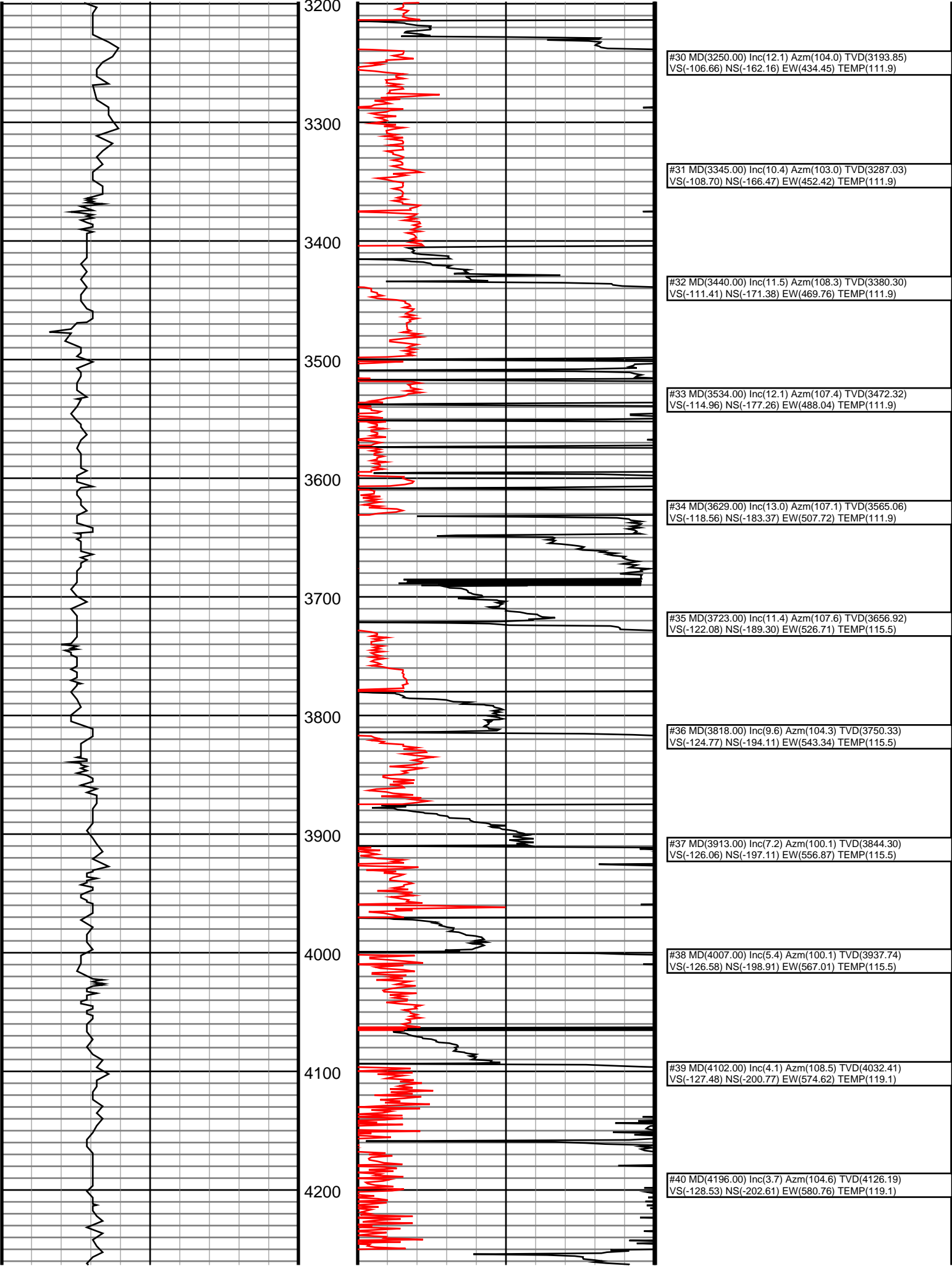
Run	Bit Size	Gamma	Survey	Offsets	Start	End	Start	End	Dates
1	8 3/4	40.70	54.80	627	5386	6/25/2014	6/26/2014		
2	8 3/4	40.84	54.94	5386	6523	6/26/2014	6/26/2014		
3	6 1/8	38.86	53.36	6523	10200	6/27/2014	6/29/2014		
4									
5									
6									
7									
8									
9									
10									

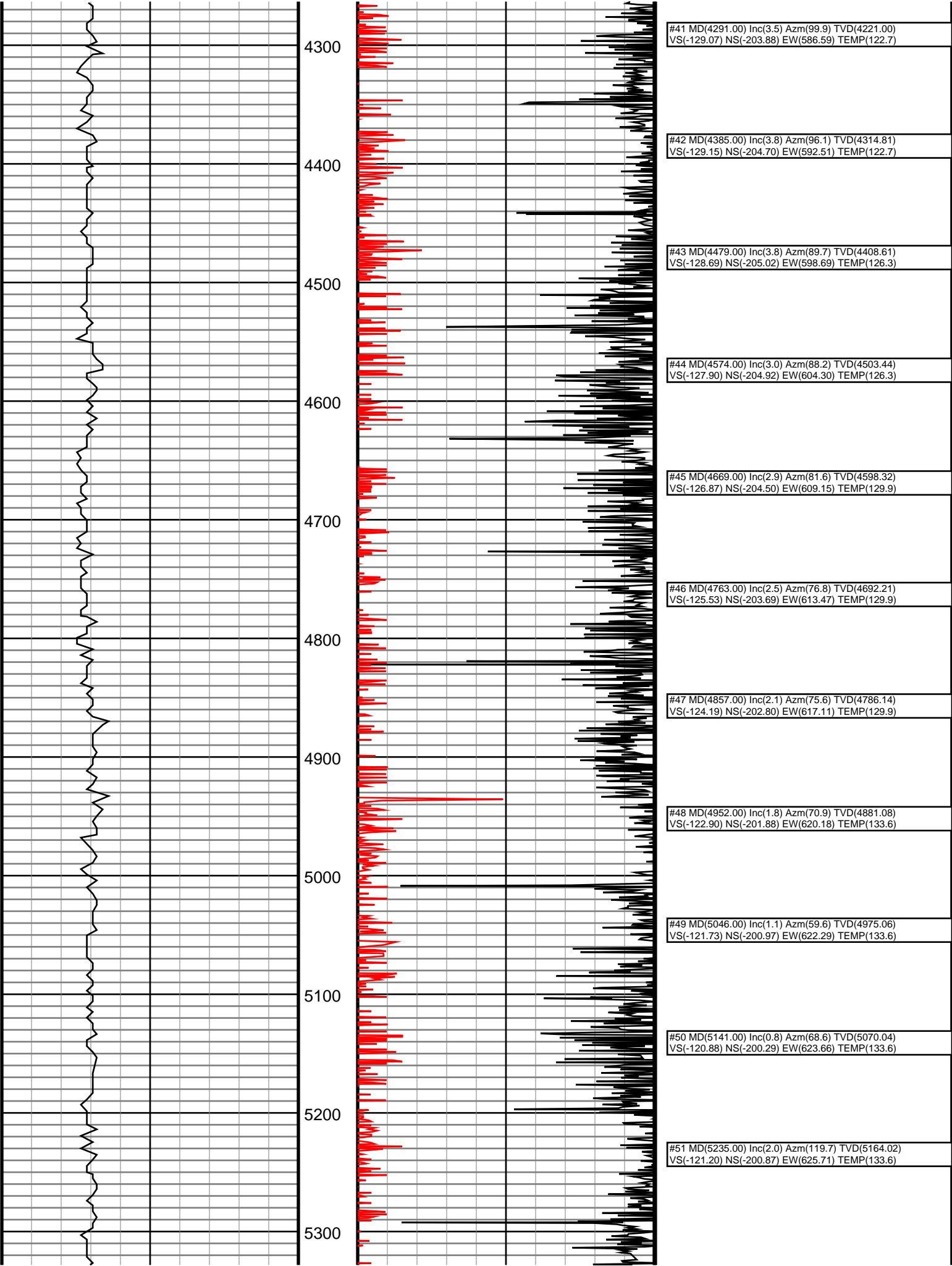
DrilTech L.L.C. uses its best efforts to provide its customers with accurate information and interpretations in conjunction with services performed but will not be held liable or responsible for the accuracy of such information or interpretation.

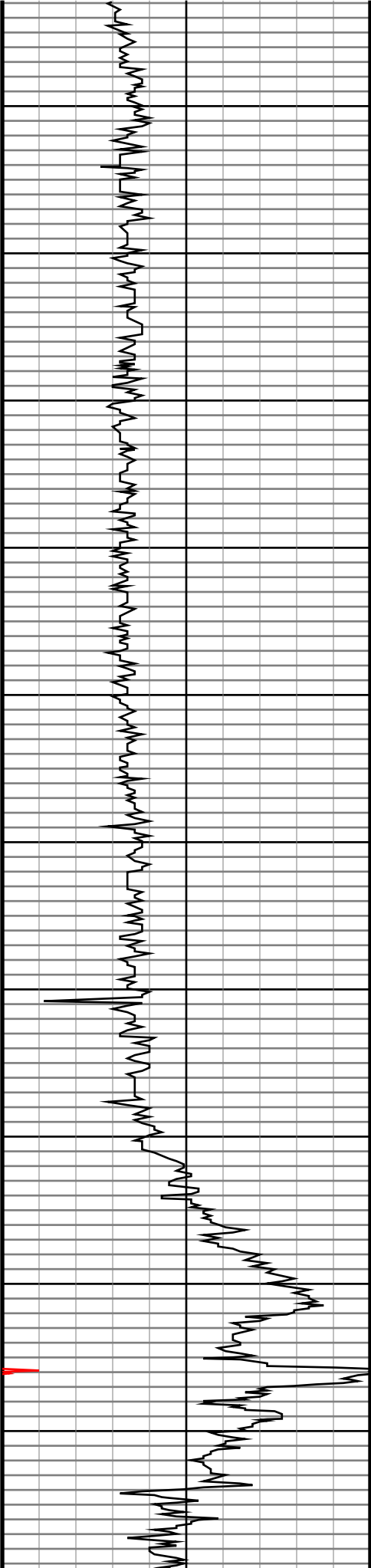












5400

5500

5600

5700

5800

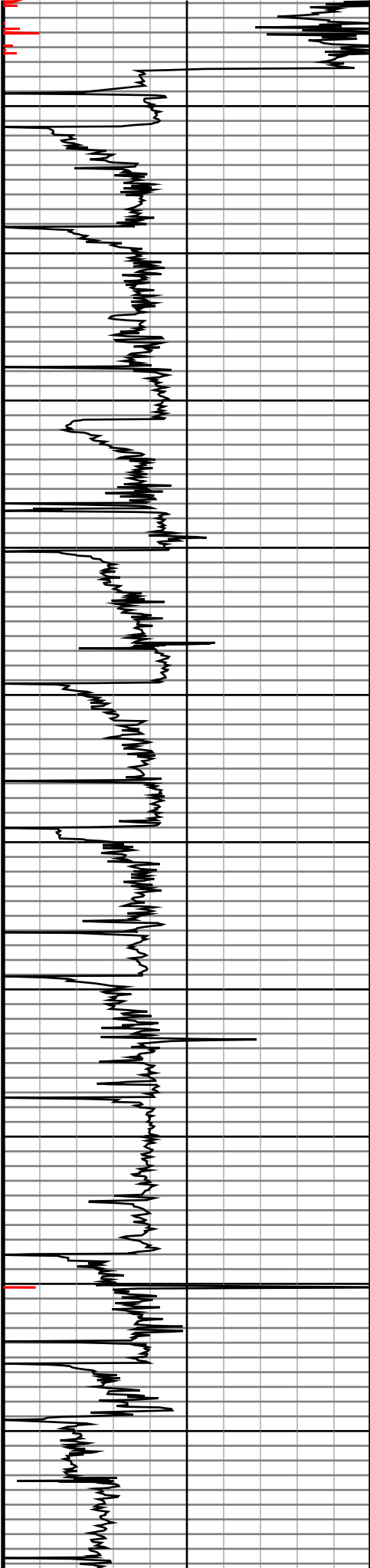
5900

6000

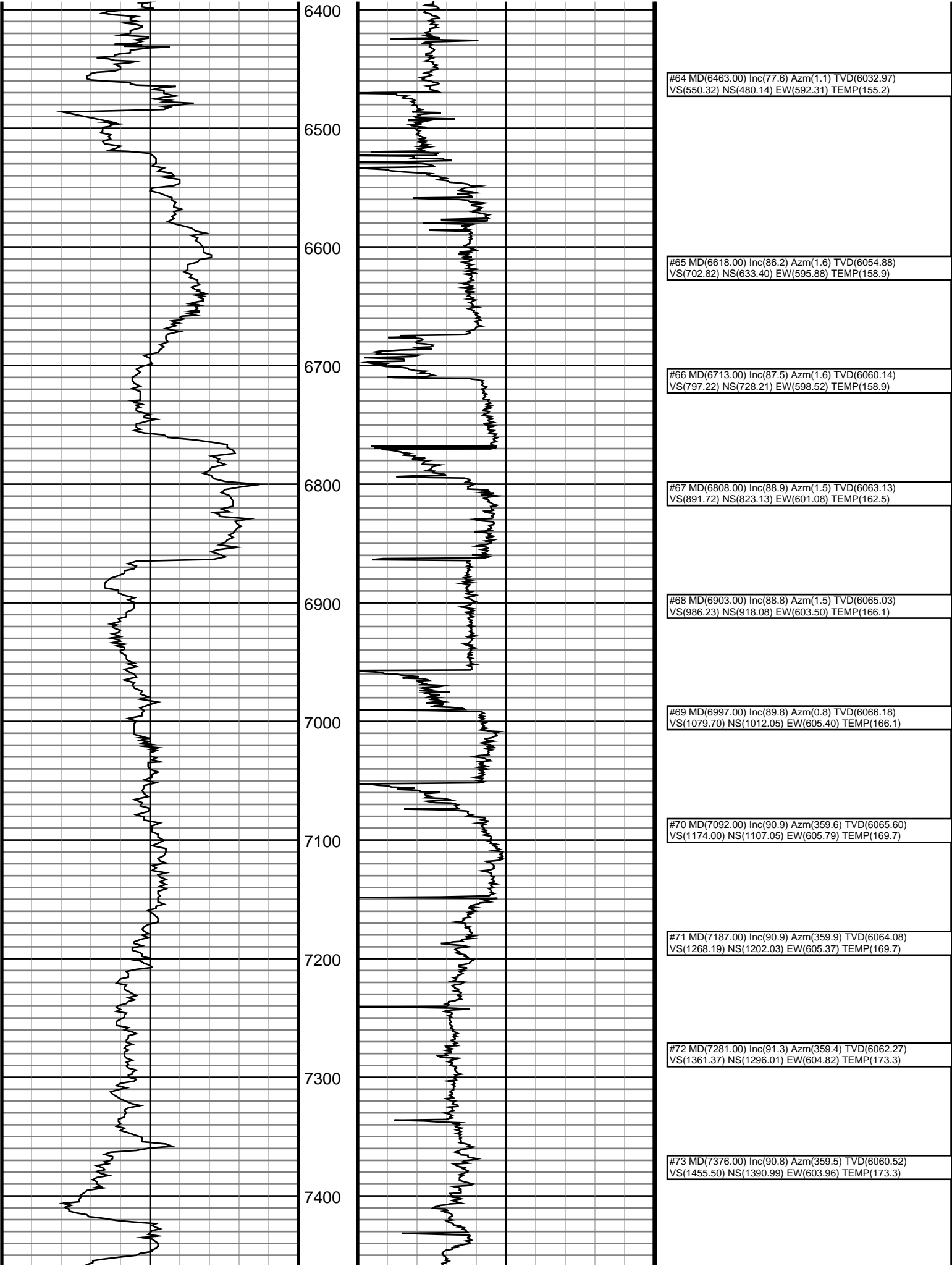
6100

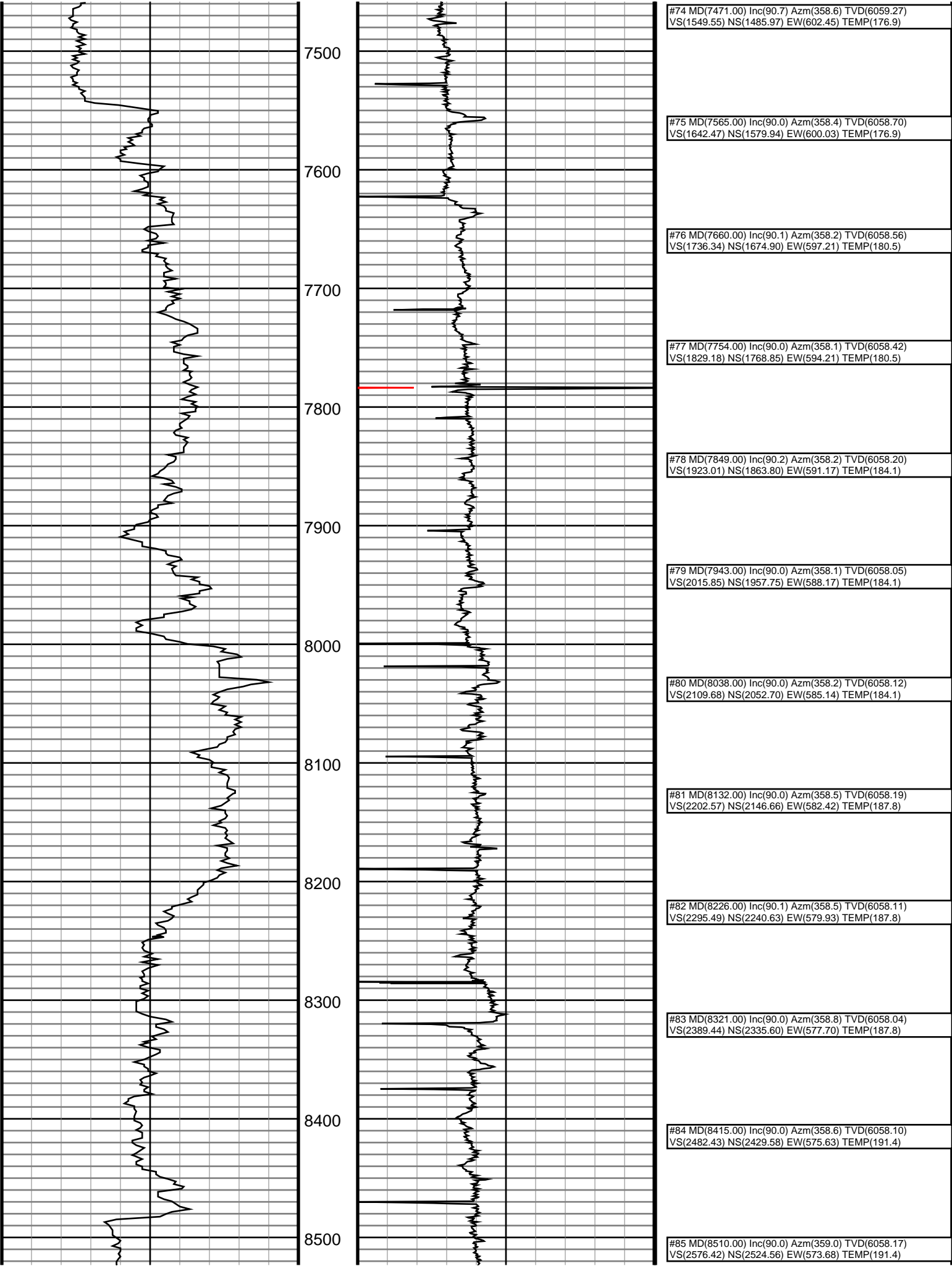
6200

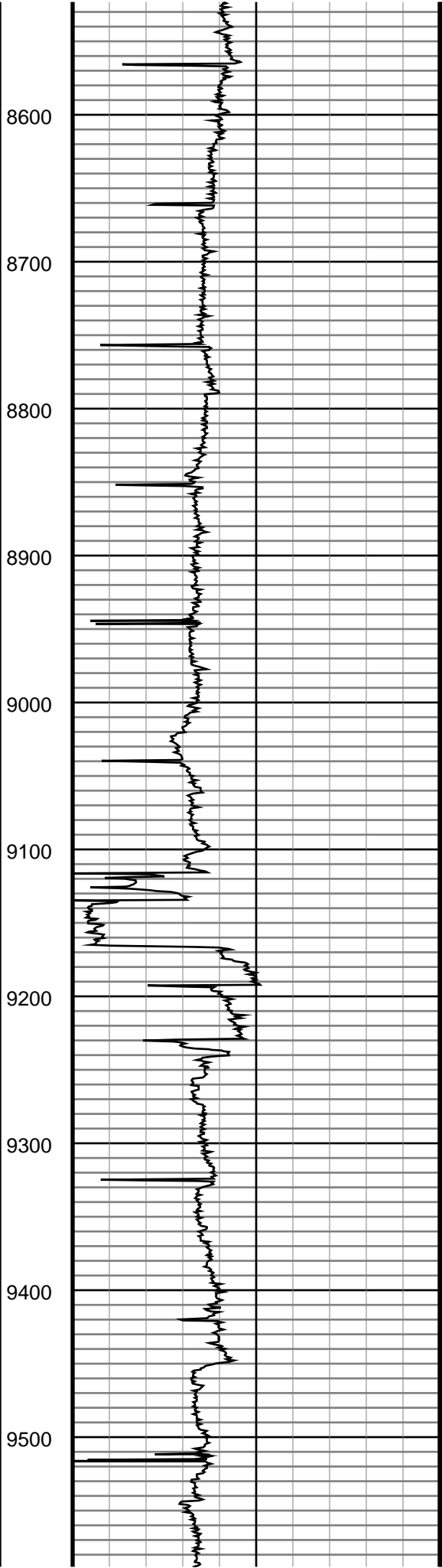
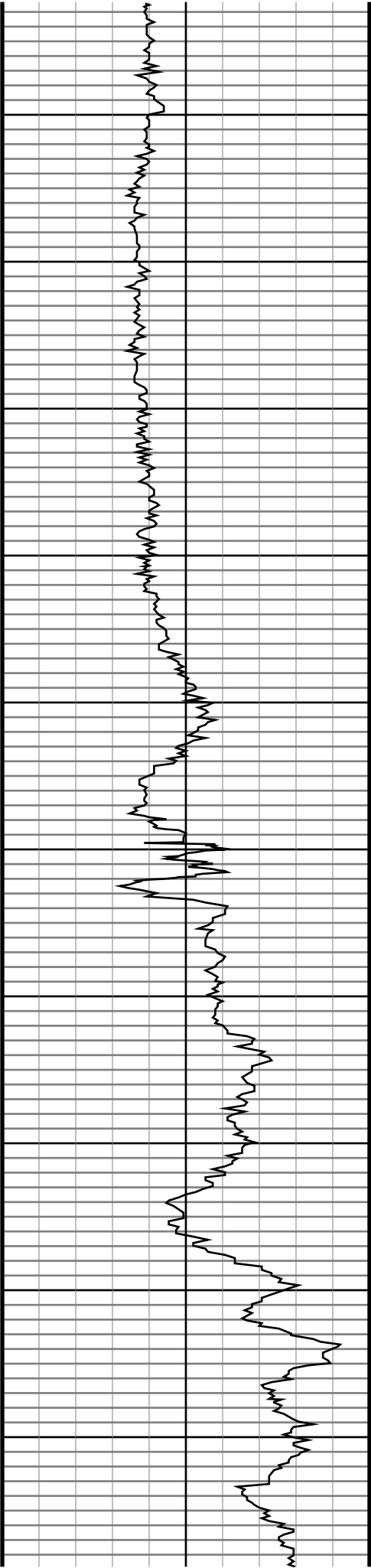
6300



#52 MD(5330.00) Inc(1.5) Azm(113.3) TVD(5258.97) VS(-122.19) NS(-202.19) EW(628.29) TEMP(133.6)
#53 MD(5424.00) Inc(0.6) Azm(357.2) TVD(5352.96) VS(-122.03) NS(-202.16) EW(629.39) TEMP(122.7)
#54 MD(5518.00) Inc(15.3) Azm(341.5) TVD(5445.80) VS(-110.28) NS(-189.83) EW(625.41) TEMP(122.7)
#55 MD(5613.00) Inc(21.7) Azm(355.8) TVD(5535.89) VS(-81.70) NS(-160.36) EW(620.15) TEMP(129.9)
#56 MD(5707.00) Inc(28.1) Azm(351.1) TVD(5621.09) VS(-43.31) NS(-121.07) EW(615.45) TEMP(129.9)
#57 MD(5802.00) Inc(35.4) Azm(351.9) TVD(5701.83) VS(4.79) NS(-71.67) EW(608.09) TEMP(133.6)
#58 MD(5896.00) Inc(42.8) Azm(356.4) TVD(5774.75) VS(62.50) NS(-12.77) EW(602.22) TEMP(137.2)
#59 MD(5991.00) Inc(50.5) Azm(358.7) TVD(5839.93) VS(130.56) NS(56.19) EW(599.37) TEMP(140.8)
#60 MD(6086.00) Inc(58.0) Azm(358.5) TVD(5895.39) VS(206.75) NS(133.21) EW(597.49) TEMP(144.4)
#61 MD(6180.00) Inc(58.3) Azm(356.1) TVD(5944.97) VS(285.42) NS(212.98) EW(593.71) TEMP(144.4)
#62 MD(6274.00) Inc(70.1) Azm(358.1) TVD(5985.82) VS(368.60) NS(297.34) EW(589.53) TEMP(148.0)
#63 MD(6369.00) Inc(77.3) Azm(2.1) TVD(6012.50) VS(459.01) NS(388.44) EW(589.76) TEMP(148.0)







#86 MD(8605.00) Inc(90.2) Azm(359.4) TVD(6058.02)
VS(2670.50) NS(2619.55) EW(572.32) TEMP(191.4)

#87 MD(8699.00) Inc(90.3) Azm(359.8) TVD(6057.59)
VS(2763.68) NS(2713.55) EW(571.63) TEMP(195.0)

#88 MD(8794.00) Inc(90.5) Azm(359.6) TVD(6056.93)
VS(2857.87) NS(2808.54) EW(571.15) TEMP(195.0)

#89 MD(8888.00) Inc(90.4) Azm(359.9) TVD(6056.21)
VS(2951.08) NS(2902.54) EW(570.74) TEMP(195.0)

#90 MD(8983.00) Inc(90.7) Azm(359.9) TVD(6055.33)
VS(3045.31) NS(2997.54) EW(570.54) TEMP(195.0)

#91 MD(9077.00) Inc(90.7) Azm(360.0) TVD(6054.25)
VS(3138.55) NS(3091.53) EW(570.42) TEMP(198.6)

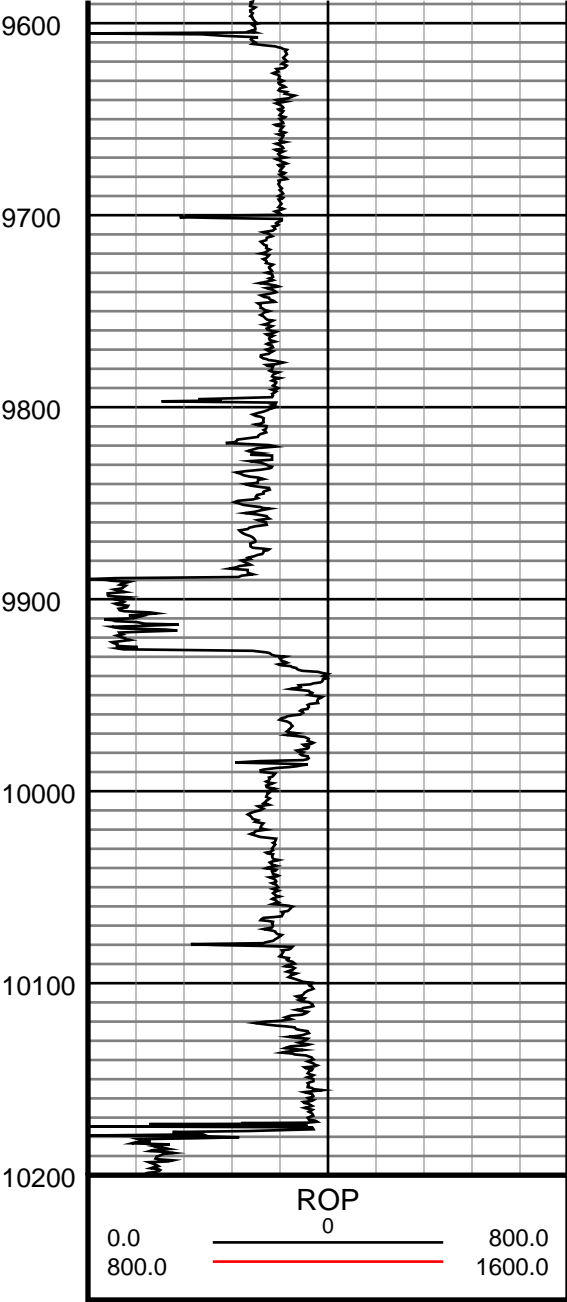
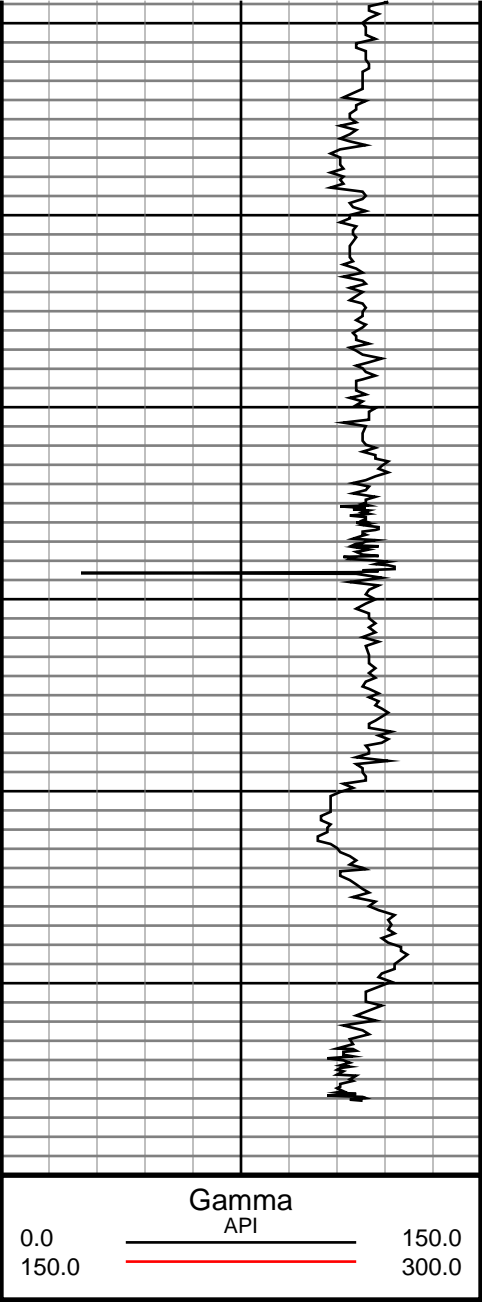
#92 MD(9172.00) Inc(89.2) Azm(359.3) TVD(6054.32)
VS(3232.72) NS(3186.52) EW(569.79) TEMP(191.4)

#93 MD(9267.00) Inc(89.3) Azm(359.4) TVD(6055.49)
VS(3326.83) NS(3281.51) EW(568.72) TEMP(195.0)

#94 MD(9361.00) Inc(89.3) Azm(359.5) TVD(6056.57)
VS(3419.98) NS(3375.50) EW(567.88) TEMP(195.0)

#95 MD(9456.00) Inc(89.4) Azm(359.6) TVD(6057.59)
VS(3514.14) NS(3470.49) EW(567.17) TEMP(198.6)

#96 MD(9551.00) Inc(89.4) Azm(359.9) TVD(6058.54)
VS(3608.34) NS(3565.49) EW(566.76) TEMP(198.6)



#97 MD(9645.00) Inc(89.4) Azm(359.9) TVD(6059.47)
VS(3701.58) NS(3659.48) EW(566.56) TEMP(198.6)

#98 MD(9740.00) Inc(90.0) Azm(0.3) TVD(6059.91)
VS(3795.86) NS(3754.48) EW(566.73) TEMP(202.2)

#99 MD(9835.00) Inc(90.0) Azm(0.2) TVD(6059.85)
VS(3890.17) NS(3849.48) EW(567.18) TEMP(202.2)

#100 MD(9929.00) Inc(90.0) Azm(359.2) TVD(6059.78)
VS(3983.37) NS(3943.48) EW(566.70) TEMP(198.6)

#101 MD(10024.00) Inc(90.2) Azm(359.4) TVD(6059.57)
VS(4077.47) NS(4038.47) EW(565.49) TEMP(202.2)

#102 MD(10118.00) Inc(90.5) Azm(359.3) TVD(6058.99)
VS(4170.59) NS(4132.46) EW(564.37) TEMP(202.2)

#103 MD(10145.00) Inc(90.5) Azm(359.4) TVD(6058.76)
VS(4197.33) NS(4159.46) EW(564.06) TEMP(202.2)

#104 MD(10200.00) Inc(90.5) Azm(359.4) TVD(6058.30)
VS(4231.63) NS(4214.43) EW(563.32) TEMP(202.2)