



CG 94u

MD 2723 TVD 2712.2  
INC 9.2 AZ 194.03  
VS 42.77

12:01 AM  
07/28/2014  
372 FT/24HRS  
DAY 02

ROP (ft/hr)  
Gamma (API)

2000  
300

MD 2818 TVD 2805.82  
INC 10.34 AZ 192.75  
VS 47.48

MD 2912 TVD 2898.26  
INC 10.54 AZ 193.32  
VS 52.37

2750

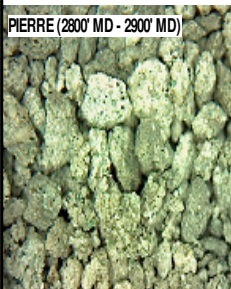
2800

2850

2900

2700'-2800': SLTST: 60% LTGY -  
MEDLTGY, FRI, FN TO MED GRN, W  
SRTD, CALC CMT, SANDY, IMBD  
PYR, IMBD SS LAMN, INTGR POR,  
NO STN, NO MIN FLOR, NO O  
FLOR, NO CUT, NO RNG

PIERRE (2800' MD - 2900' MD)

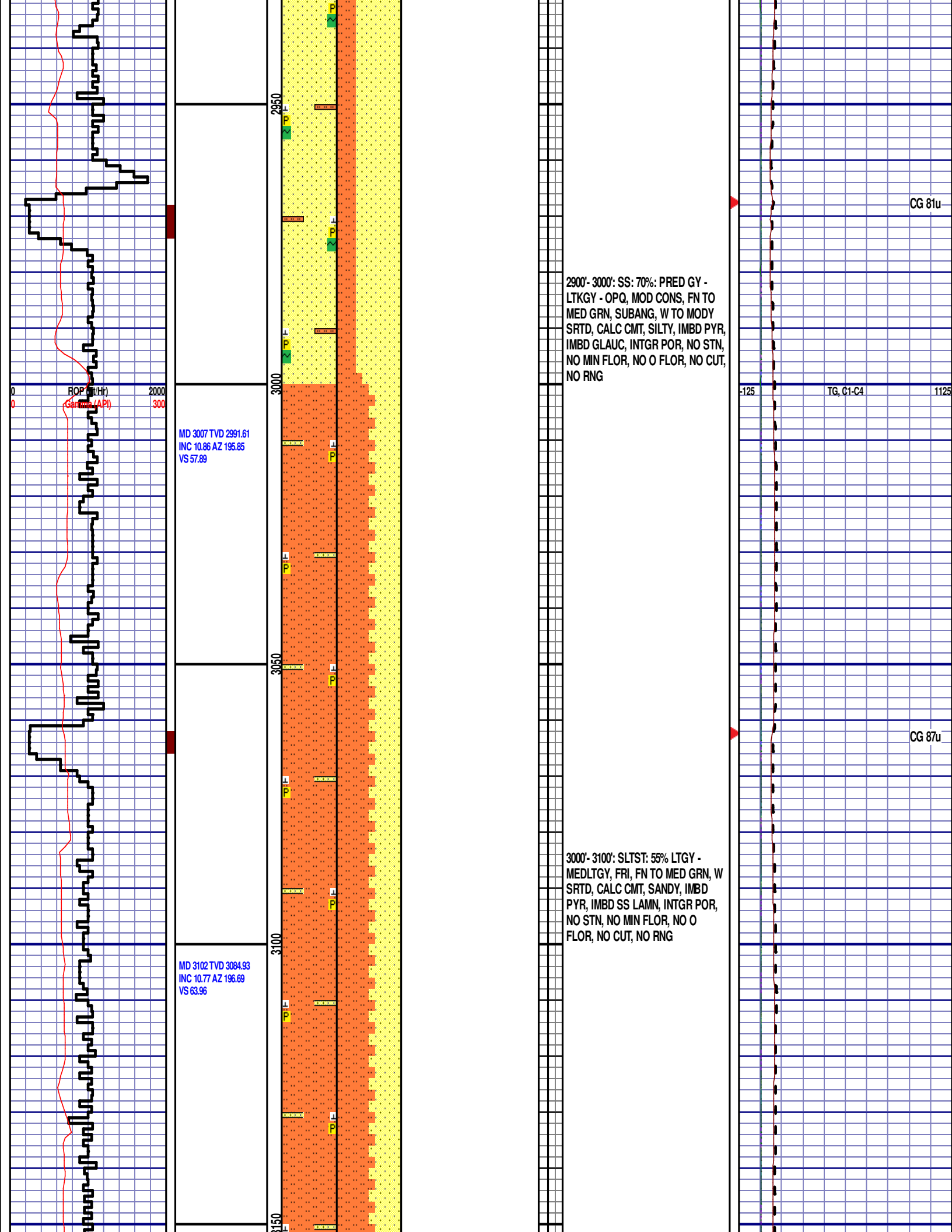


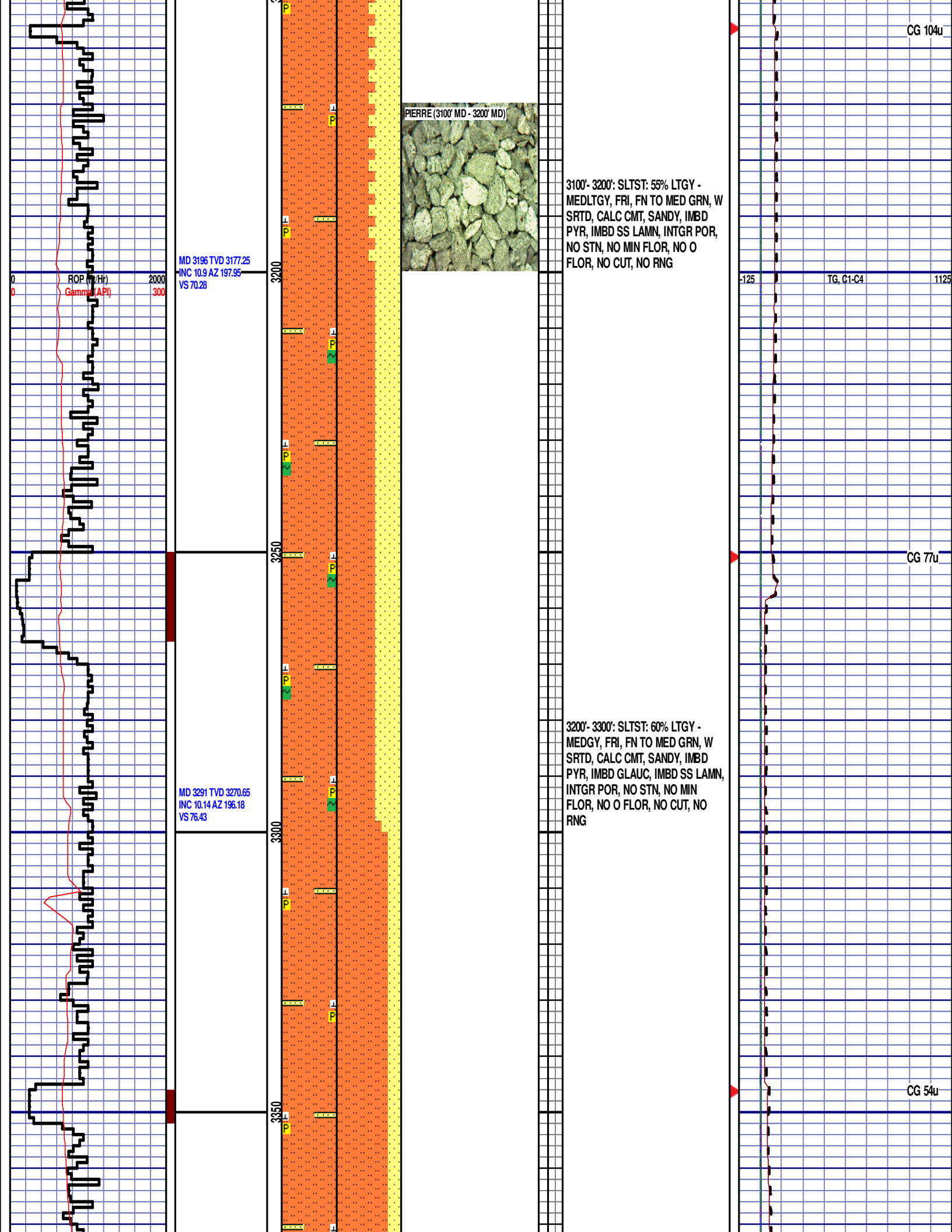
2800'-2900': SS: 60%: PRED GY -  
LTKGY - OPQ, MOD CONS, FN TO  
MED GRN, SUBANG, W TO MODY  
SRTD, CALC CMT, SILTY, IMBD PYR,  
IMBD GLAUC, INTGR POR, NO STN,  
NO MIN FLOR, NO O FLOR, NO CUT,  
NO RNG

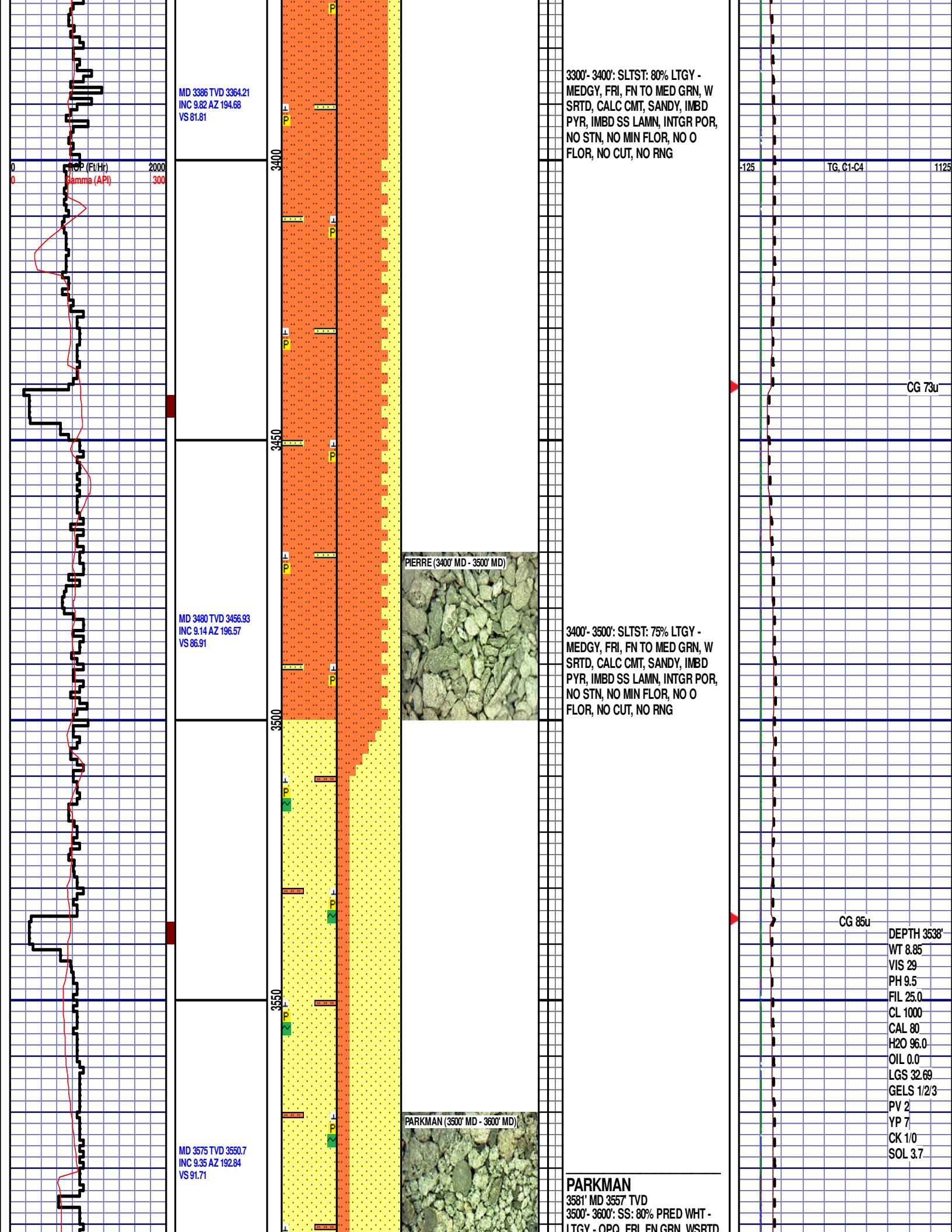
CG 94u

TG, C1-C4

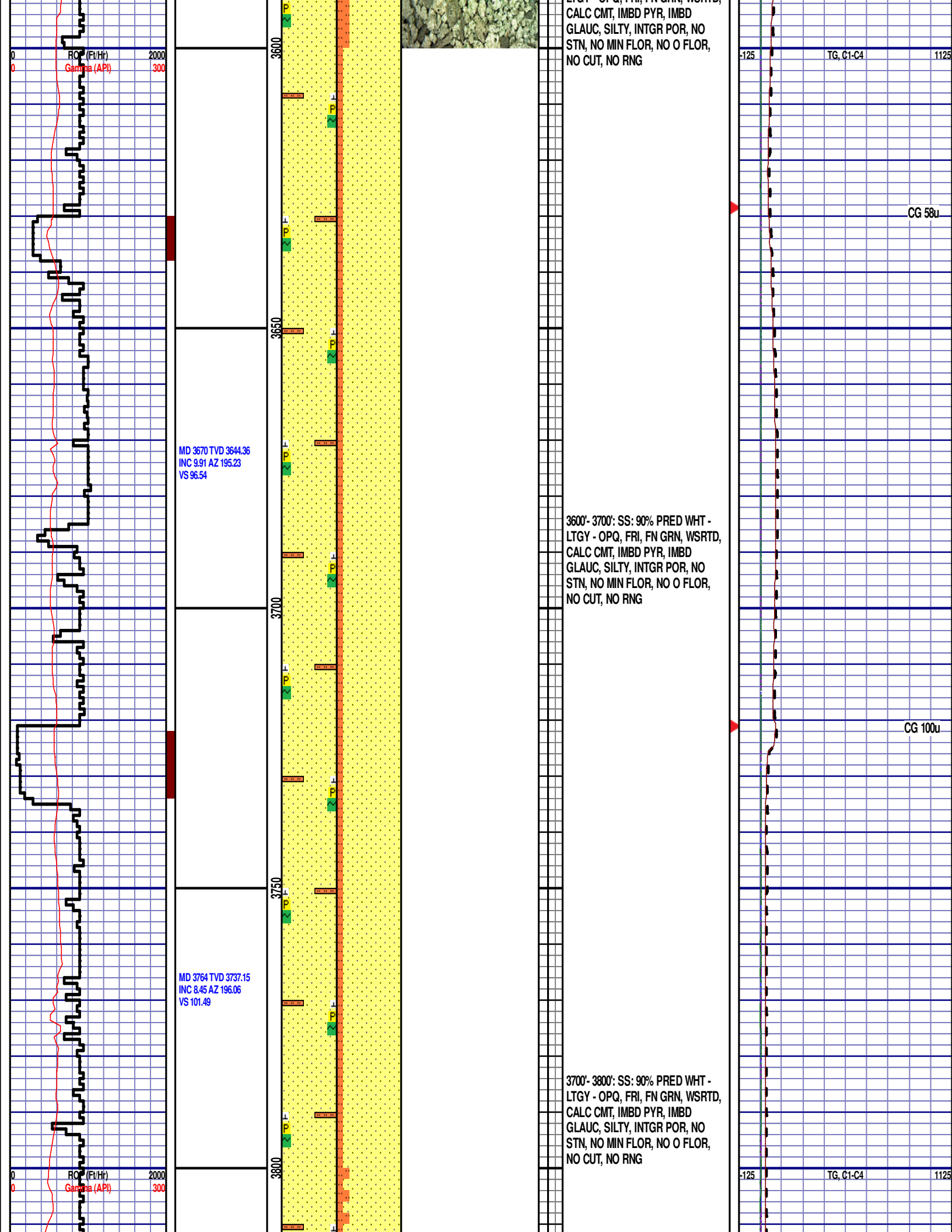
CG 73u











CG 93u

MD 3859 TVD 3831.23  
INC 7.53 AZ 189.69  
VS 105.28

PARKMAN (3800' MD - 3900' MD)

3800'- 3900': SS: 85% PRED WHT -  
LTGY - OPQ, FRI, FN GRN, WSRTD,  
CALC CMT, IMBD PYR, IMBD  
GLAUC, SILTY, INTGR POR, NO  
STN, NO MIN FLOR, NO O FLOR,  
NO CUT, NO RNG

CG 81u

MD 3953 TVD 3924.54  
INC 6.4 AZ 186.73  
VS 107.64

3900'- 4000': SLTST: 65% LTGY  
-MEDLTGY, FRI, FN TO MED GRN,  
WSRTD, CALC CMT, IMBD PYR,  
TRC IMBD GLAUC, SANDY, INTGR  
POR, NO STN, NO MIN FLOR, NO O  
FLOR, NO CUT, NO RNG

ROP (Ft/Hr)  
Gamma (API)

2000  
300

4000

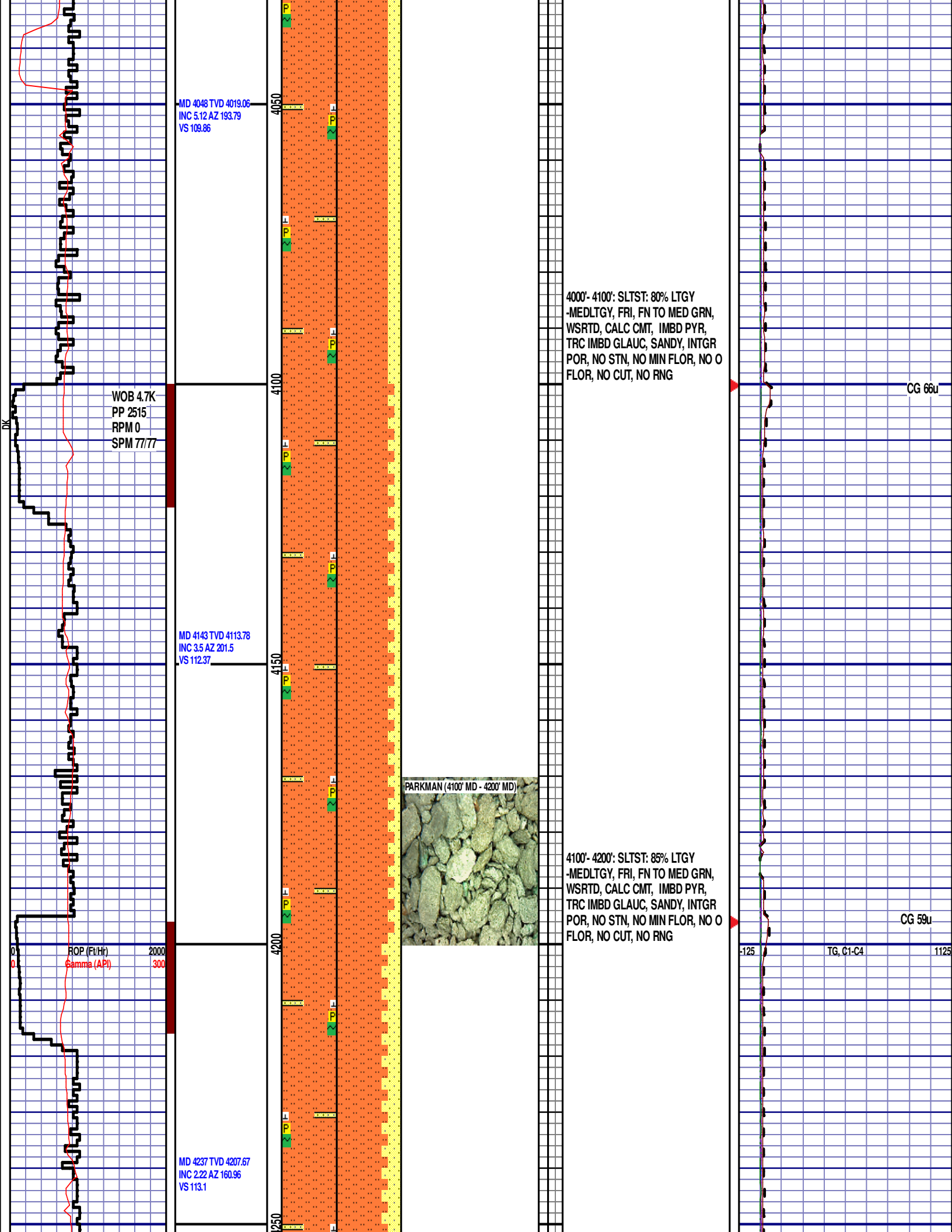
-125

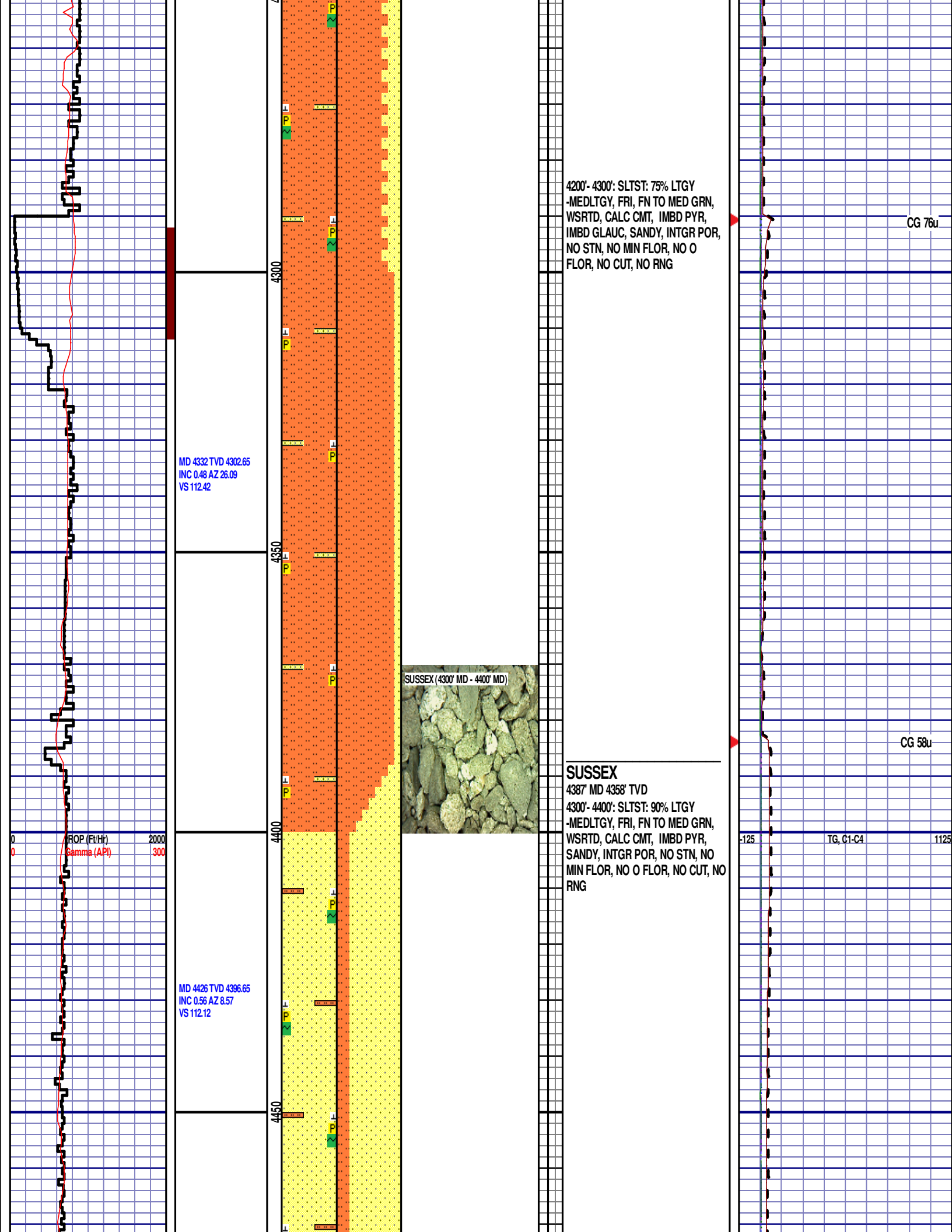
TG, C1-C4

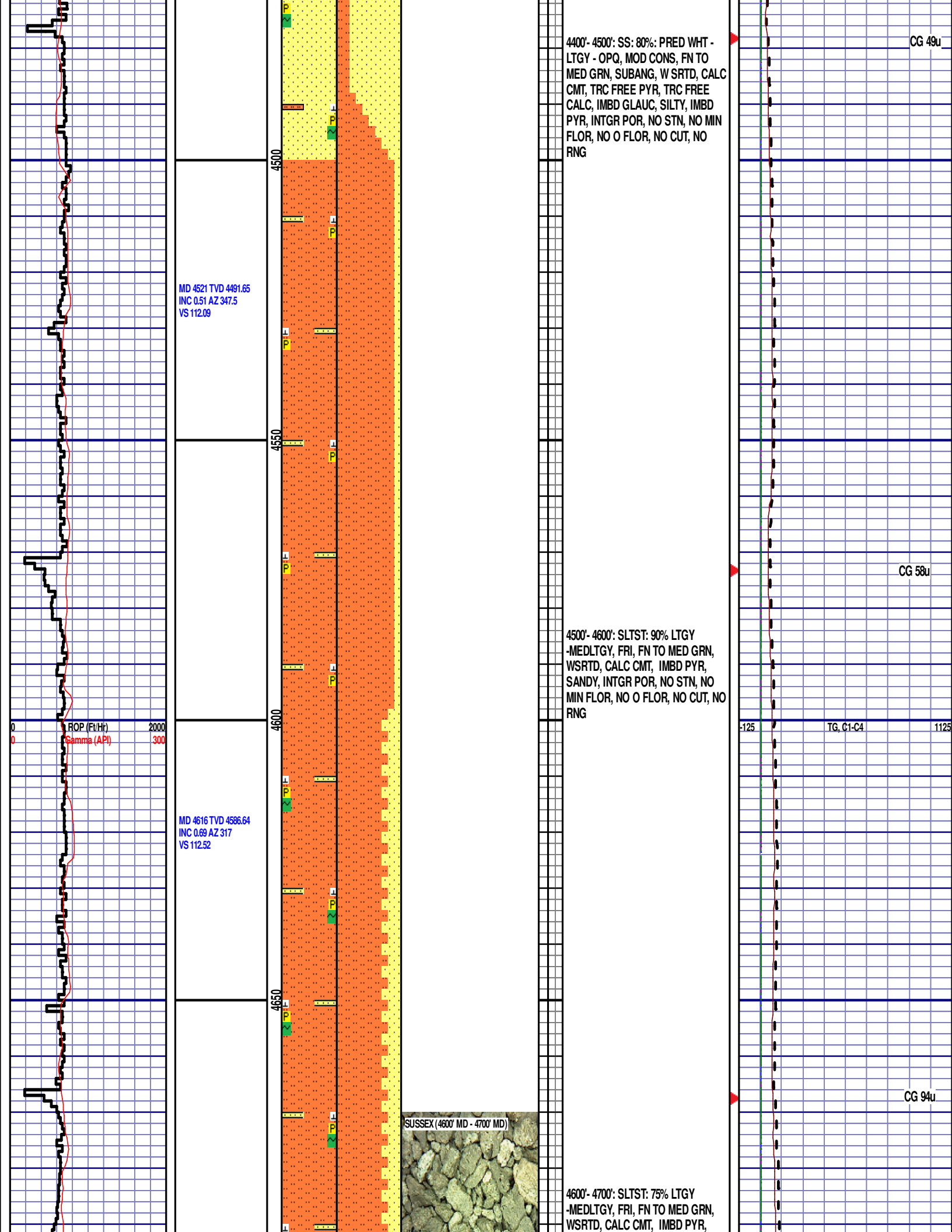
1125

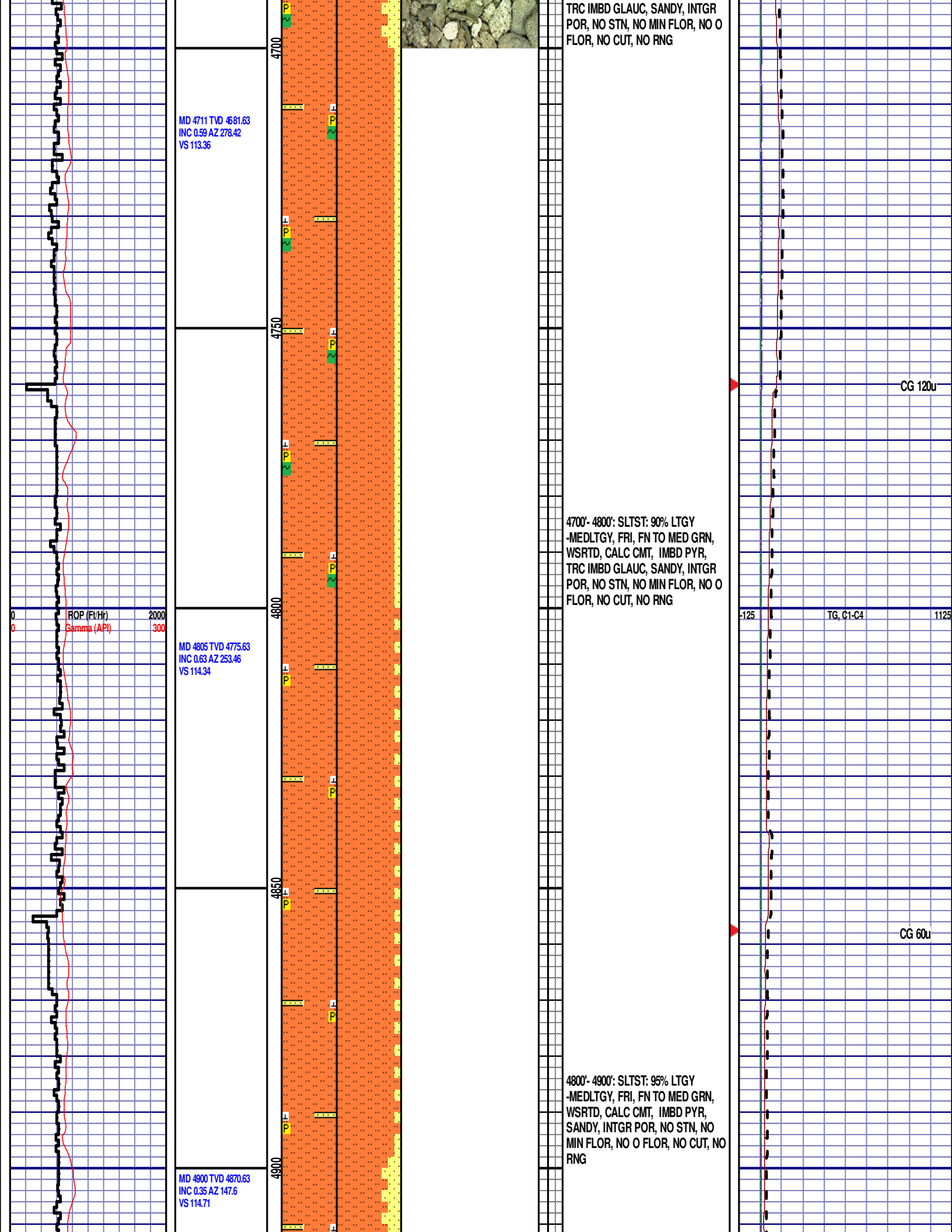
CG 84u

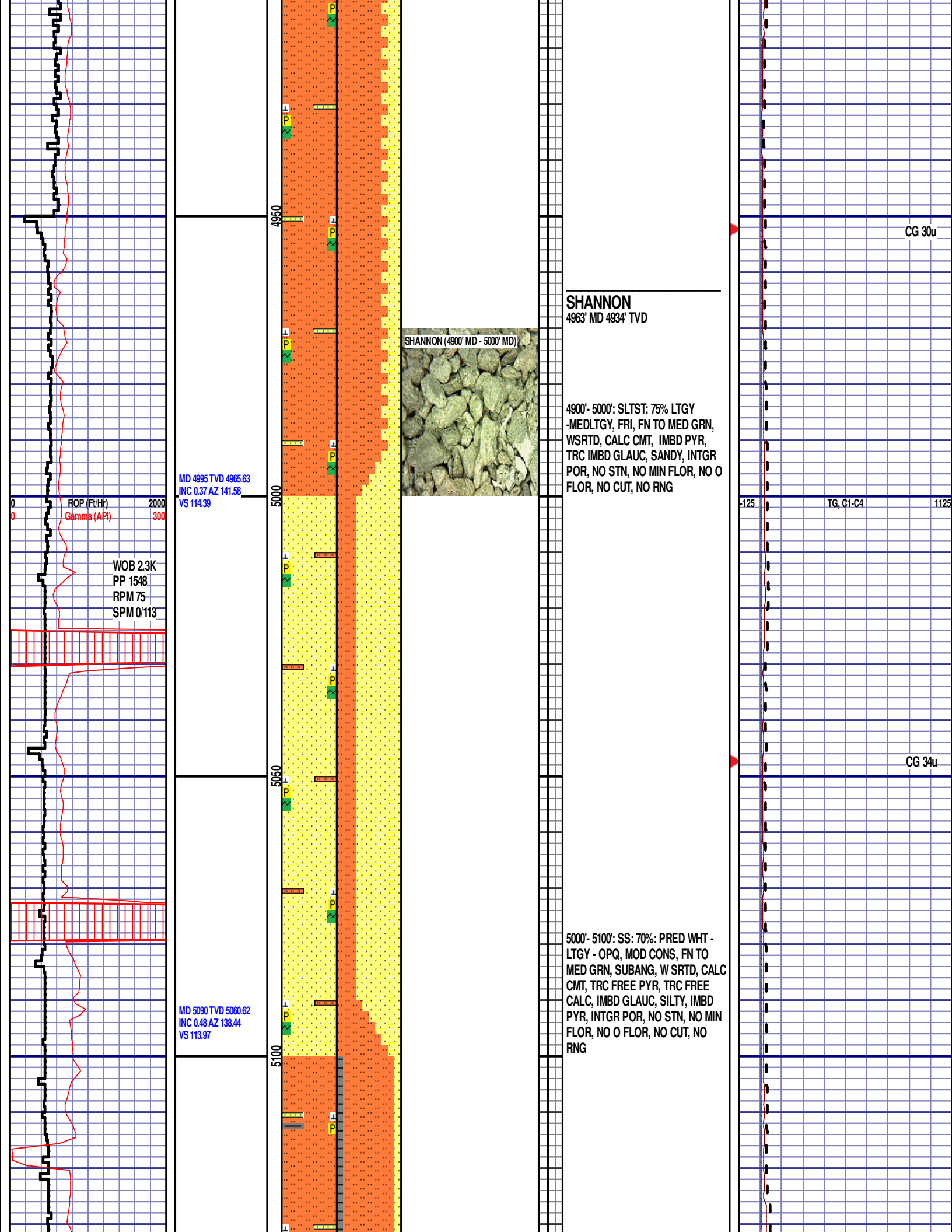












SHANNON

4963' MD 4934' TVD

SHANNON (4900' MD - 5000' MD)



4900'- 5000': SLTST: 75% LTGY  
-MEDLTGY, FRI, FN TO MED GRN,  
WSRTD, CALC CMT, IMBD PYR,  
TRC IMBD GLAUC, SANDY, INTGR  
POR, NO STN, NO MIN FLOR, NO O  
FLOR, NO CUT, NO RNG

MD 4995 TVD 4965.63  
JNC 0.37 AZ 141.58  
VS 114.39

ROP (Ft/Hr) 2000  
Gamma (API) 300

WOB 2.3K  
PP 1548  
RPM 75  
SPM 0/113

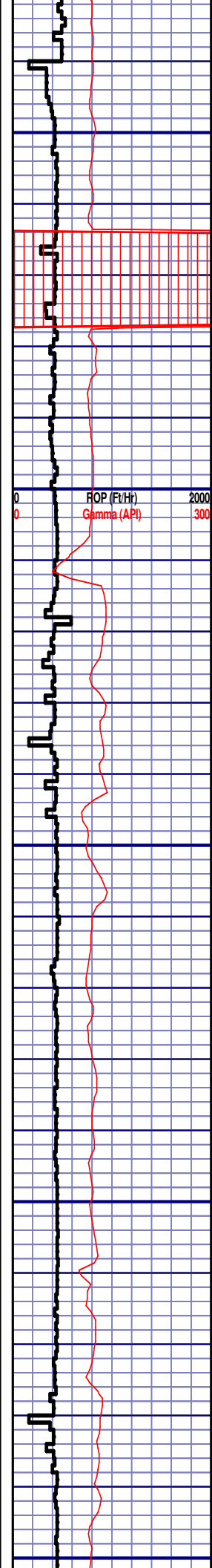
MD 5090 TVD 5060.62  
JNC 0.48 AZ 138.44  
VS 113.97

5000'- 5100': SS: 70%: PRED WHT -  
LTGY - OPQ, MOD CONS, FN TO  
MED GRN, SUBANG, W SRTD, CALC  
CMT, TRC FREE PYR, TRC FREE  
CALC, IMBD GLAUC, SILTY, IMBD  
PYR, INTGR POR, NO STN, NO MIN  
FLOR, NO O FLOR, NO CUT, NO  
RNG

CG 30u

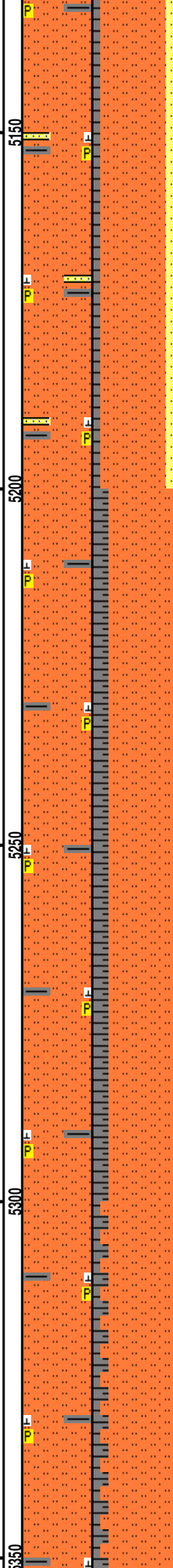
TG, C1-C4

CG 34u



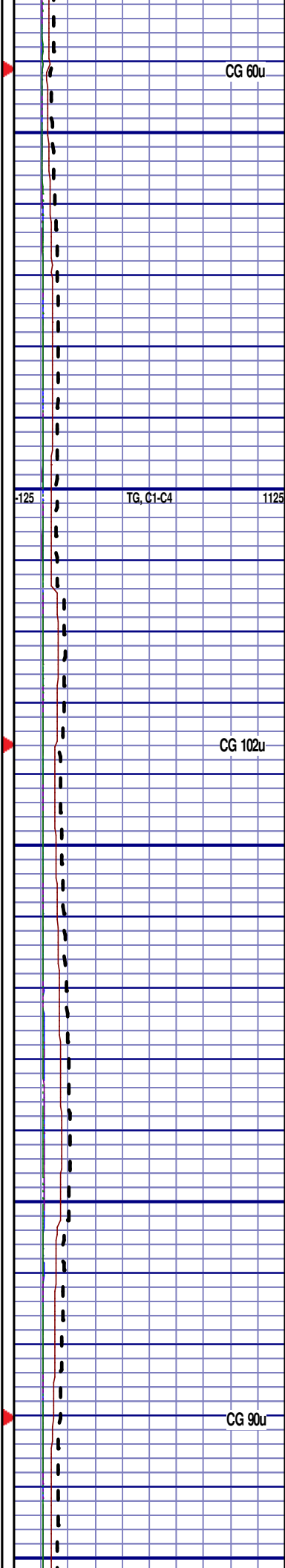
MD 5185 TVD 5155.62  
INC 0.58 AZ 133.51  
VS 113.4

MD 5279 TVD 5249.61  
INC 0.83 AZ 127.29  
VS 112.56



5100'-5200': SLTST: 80% LTGY -  
MEDGY, FRI, FN TO MED GRN, W  
SRTD, CALC CMT, FREE CALC,  
SANDY, IMBD PYR, FREE SH, FREE  
SS, INTGR POR, NO STN, NO MIN  
FLOR, NO O FLOR, NO CUT, NO  
RNG

5200'-5300': SLTST: 80% LTGY -  
MEDGY, FRI, FN TO MED GRN, W  
SRTD, CALC CMT, FREE CALC,  
IMBD PYR, FREE SH, INTGR POR,  
NO STN, NO MIN FLOR, NO O  
FLOR, NO CUT, NO RNG





MD 5374 TVD 5344.6  
INC 0.71 AZ 101.11  
VS 111.47

ROP (Ft/Hr) 2000  
Gamma (API) 300

5300'-5400': SLTST: 85% LTGY -  
MEDGY, FRI, FN TO MED GRN, W  
SRTD, CALC CMT, FREE CALC,  
IMBD PYR, FREE SH, INTGR POR,  
NO STN, NO MIN FLOR, NO O  
FLOR, NO CUT, NO RNG

-125 TG, C1-C4 1125

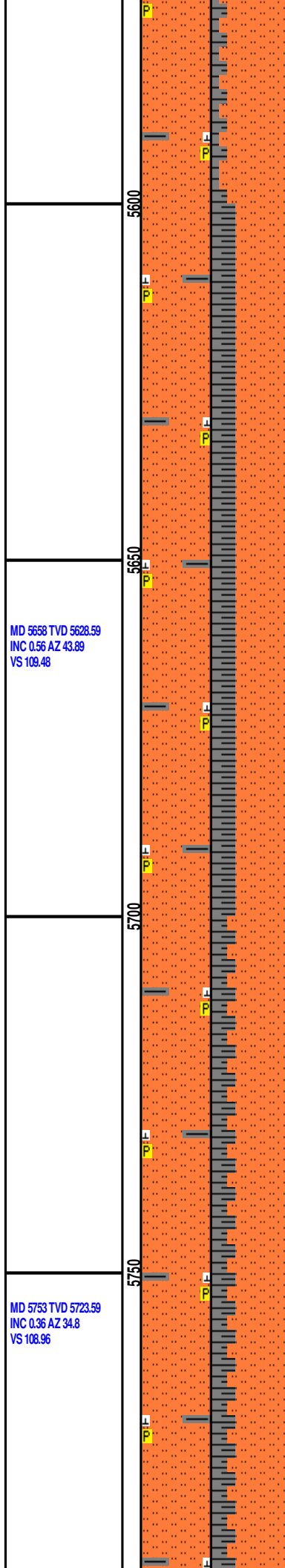
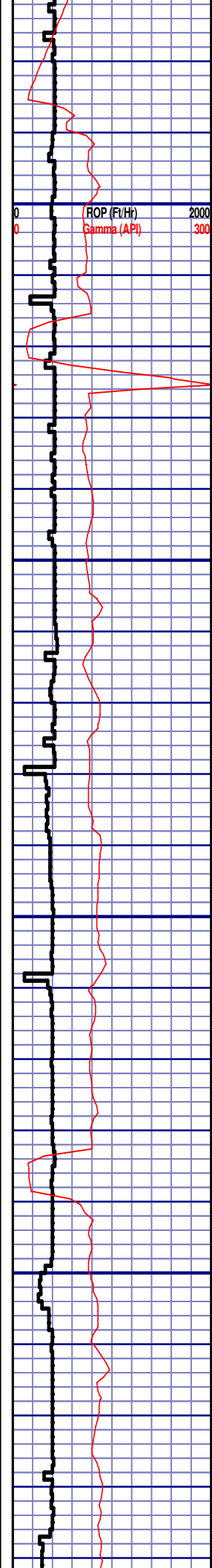
CG 41u

MD 5469 TVD 5439.6  
INC 0.53 AZ 72.5  
VS 110.48

5400'-5500': SLTST: 70% LTGY -  
MEDGY, FRI, FN TO MED GRN, W  
SRTD, CALC CMT, FREE CALC,  
IMBD PYR, FREE SH, INTGR POR,  
NO STN, NO MIN FLOR, NO O  
FLOR, NO CUT, NO RNG

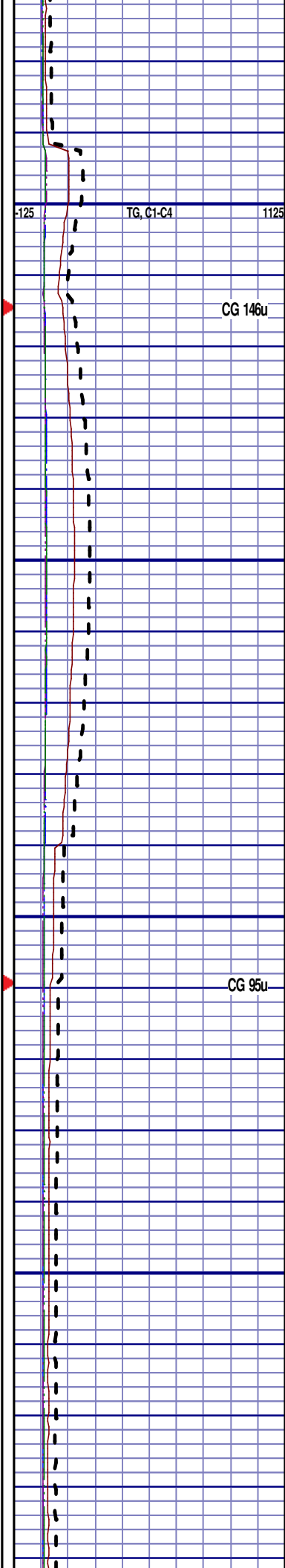
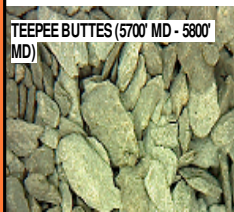
CG 41u

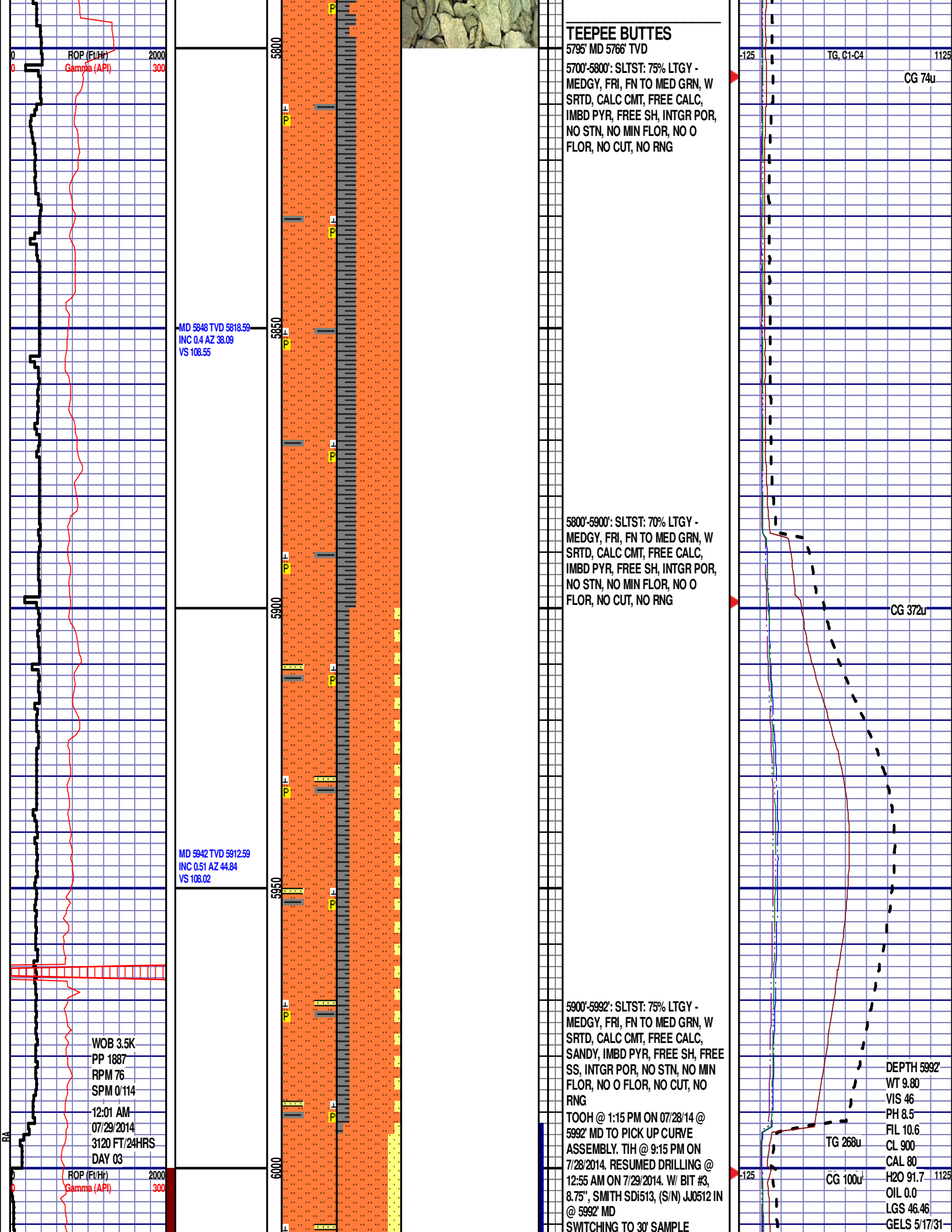
MD 5564 TVD 5534.6  
INC 0.14 AZ 78.72  
VS 109.94

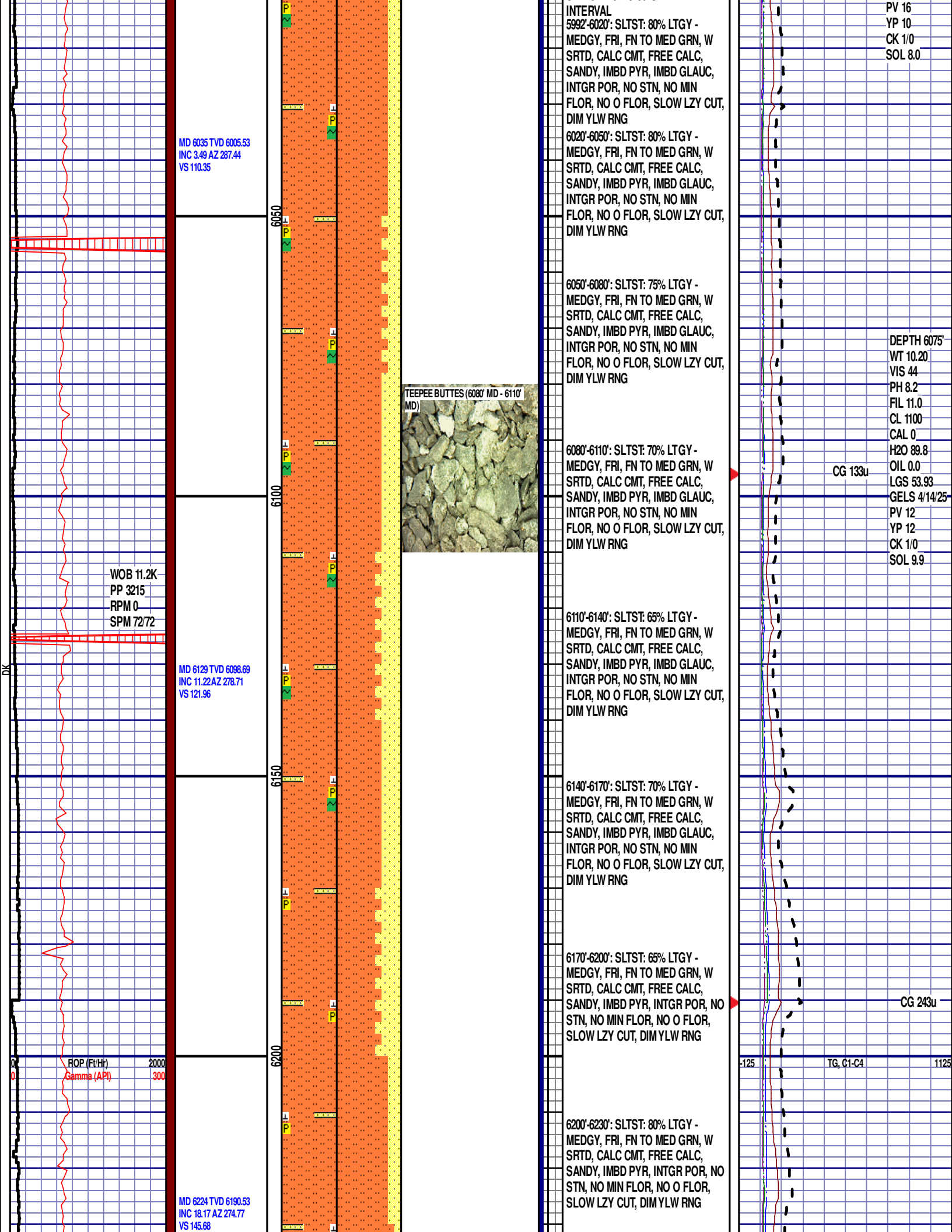


5500'-5600': SLTST: 85% LTGY -  
MEDGY, FRI, FN TO MED GRN, W  
SRTD, CALC CMT, FREE CALC,  
IMBD PYR, FREE SH, INTGR POR,  
NO STN, NO MIN FLOR, NO O  
FLOR, NO CUT, NO RNG

5600'-5700': SLTST: 70% LTGY -  
MEDGY, FRI, FN TO MED GRN, W  
SRTD, CALC CMT, FREE CALC,  
IMBD PYR, FREE SH, INTGR POR,  
NO STN, NO MIN FLOR, NO O  
FLOR, NO CUT, NO RNG







MD 6035 TVD 6005.53  
INC 3.49 AZ 287.44  
VS 110.35

WOB 11.2K  
PP 3215  
RPM 0  
SPM 72/72

MD 6129 TVD 6098.69  
INC 11.22 AZ 278.71  
VS 121.96

MD 6224 TVD 6190.53  
INC 18.17 AZ 274.77  
VS 145.68

ROP (Ft/Hr)  
Gamma (API)

2000  
300

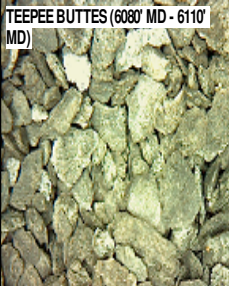
6050

6100

6150

6200

TEEPEE BUTTES (6080' MD - 6110'  
MD)



5992'-6020': SLTST: 80% LTGY -  
MEDGY, FRI, FN TO MED GRN, W  
SRTD, CALC CMT, FREE CALC,  
SANDY, IMBD PYR, IMBD GLAUC,  
INTGR POR, NO STN, NO MIN  
FLOR, NO O FLOR, SLOW LZY CUT,  
DIM YLW RNG

6020'-6050': SLTST: 80% LTGY -  
MEDGY, FRI, FN TO MED GRN, W  
SRTD, CALC CMT, FREE CALC,  
SANDY, IMBD PYR, IMBD GLAUC,  
INTGR POR, NO STN, NO MIN  
FLOR, NO O FLOR, SLOW LZY CUT,  
DIM YLW RNG

6050'-6080': SLTST: 75% LTGY -  
MEDGY, FRI, FN TO MED GRN, W  
SRTD, CALC CMT, FREE CALC,  
SANDY, IMBD PYR, IMBD GLAUC,  
INTGR POR, NO STN, NO MIN  
FLOR, NO O FLOR, SLOW LZY CUT,  
DIM YLW RNG

6080'-6110': SLTST: 70% LTGY -  
MEDGY, FRI, FN TO MED GRN, W  
SRTD, CALC CMT, FREE CALC,  
SANDY, IMBD PYR, IMBD GLAUC,  
INTGR POR, NO STN, NO MIN  
FLOR, NO O FLOR, SLOW LZY CUT,  
DIM YLW RNG

6110'-6140': SLTST: 65% LTGY -  
MEDGY, FRI, FN TO MED GRN, W  
SRTD, CALC CMT, FREE CALC,  
SANDY, IMBD PYR, IMBD GLAUC,  
INTGR POR, NO STN, NO MIN  
FLOR, NO O FLOR, SLOW LZY CUT,  
DIM YLW RNG

6140'-6170': SLTST: 70% LTGY -  
MEDGY, FRI, FN TO MED GRN, W  
SRTD, CALC CMT, FREE CALC,  
SANDY, IMBD PYR, IMBD GLAUC,  
INTGR POR, NO STN, NO MIN  
FLOR, NO O FLOR, SLOW LZY CUT,  
DIM YLW RNG

6170'-6200': SLTST: 65% LTGY -  
MEDGY, FRI, FN TO MED GRN, W  
SRTD, CALC CMT, FREE CALC,  
SANDY, IMBD PYR, INTGR POR, NO  
STN, NO MIN FLOR, NO O FLOR,  
SLOW LZY CUT, DIM YLW RNG

6200'-6230': SLTST: 80% LTGY -  
MEDGY, FRI, FN TO MED GRN, W  
SRTD, CALC CMT, FREE CALC,  
SANDY, IMBD PYR, INTGR POR, NO  
STN, NO MIN FLOR, NO O FLOR,  
SLOW LZY CUT, DIM YLW RNG

PV 16  
YP 10  
CK 1/0  
SOL 8.0

DEPTH 6075'  
WT 10.20  
VIS 44  
PH 8.2  
FIL 11.0  
CL 1100  
CAL 0  
H2O 89.8  
OIL 0.0  
LGS 53.93  
GELS 4/14/25  
PV 12  
YP 12  
CK 1/0  
SOL 9.9

CG 133u

CG 243u

TG, C1-C4

1125

