

DATE: 10/6/2014  
PROJECT#: 2014168

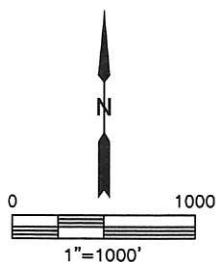
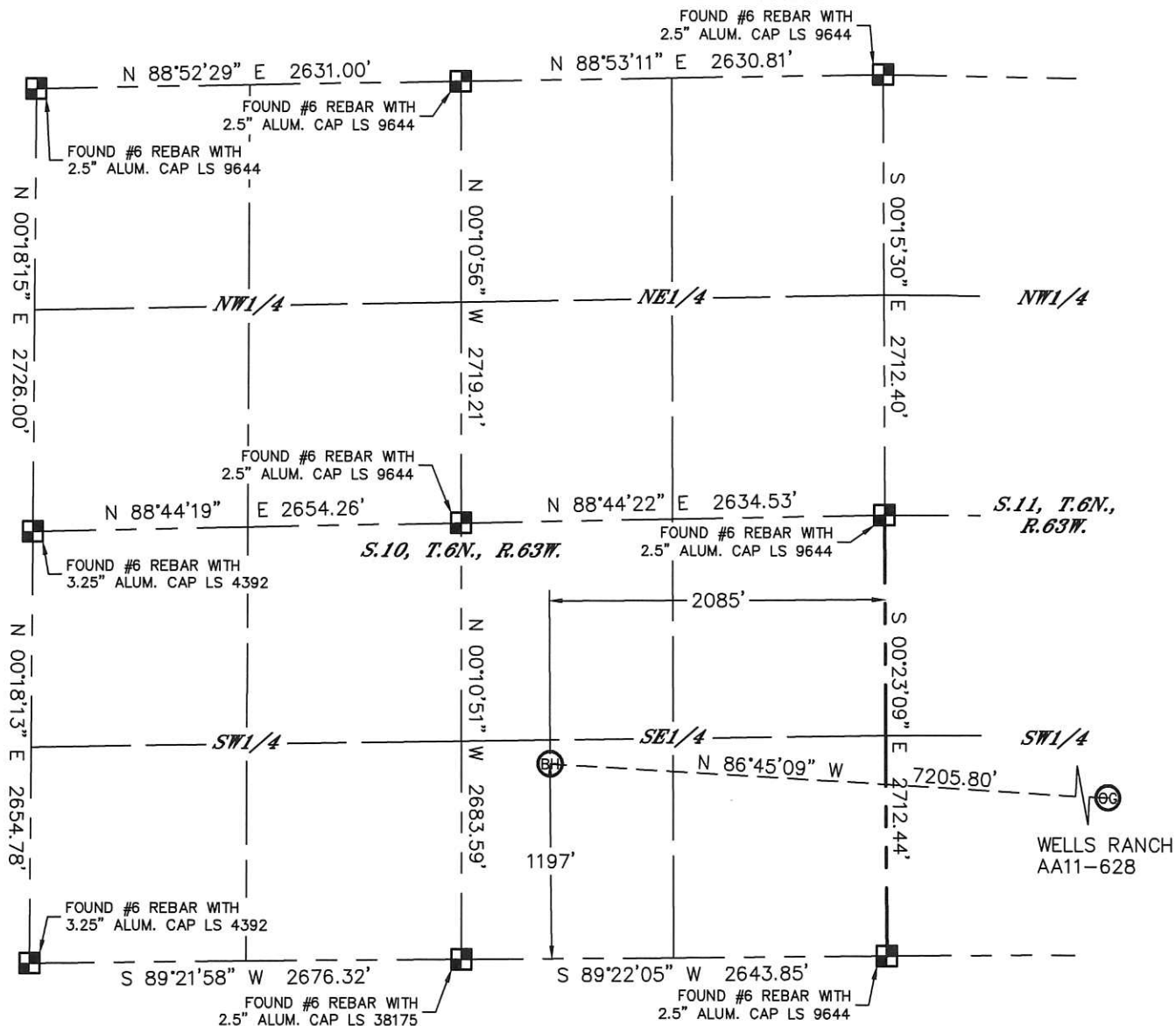


Lat40°, Inc. 6250 W. 10th Street, Unit 2, Greeley, CO 970-515-5294

# WELL LOCATION CERTIFICATE

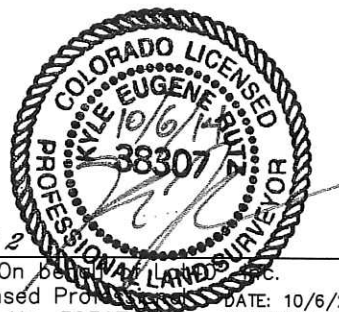
SECTION: 11  
TOWNSHIP: 6N  
RANGE: 63W

THIS MAP DOES NOT REPRESENT A BOUNDARY SURVEY



## LEGEND

- = ALIQUOT MONUMENT AS DESCRIBED
- = CALCULATED POSITION



SHEET 2 OF 2

Kyle E. Rutz-On  
Colorado Licensed Professional Land Surveyor No. 38307

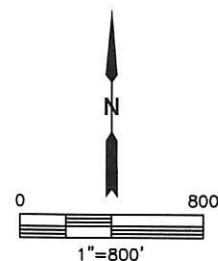
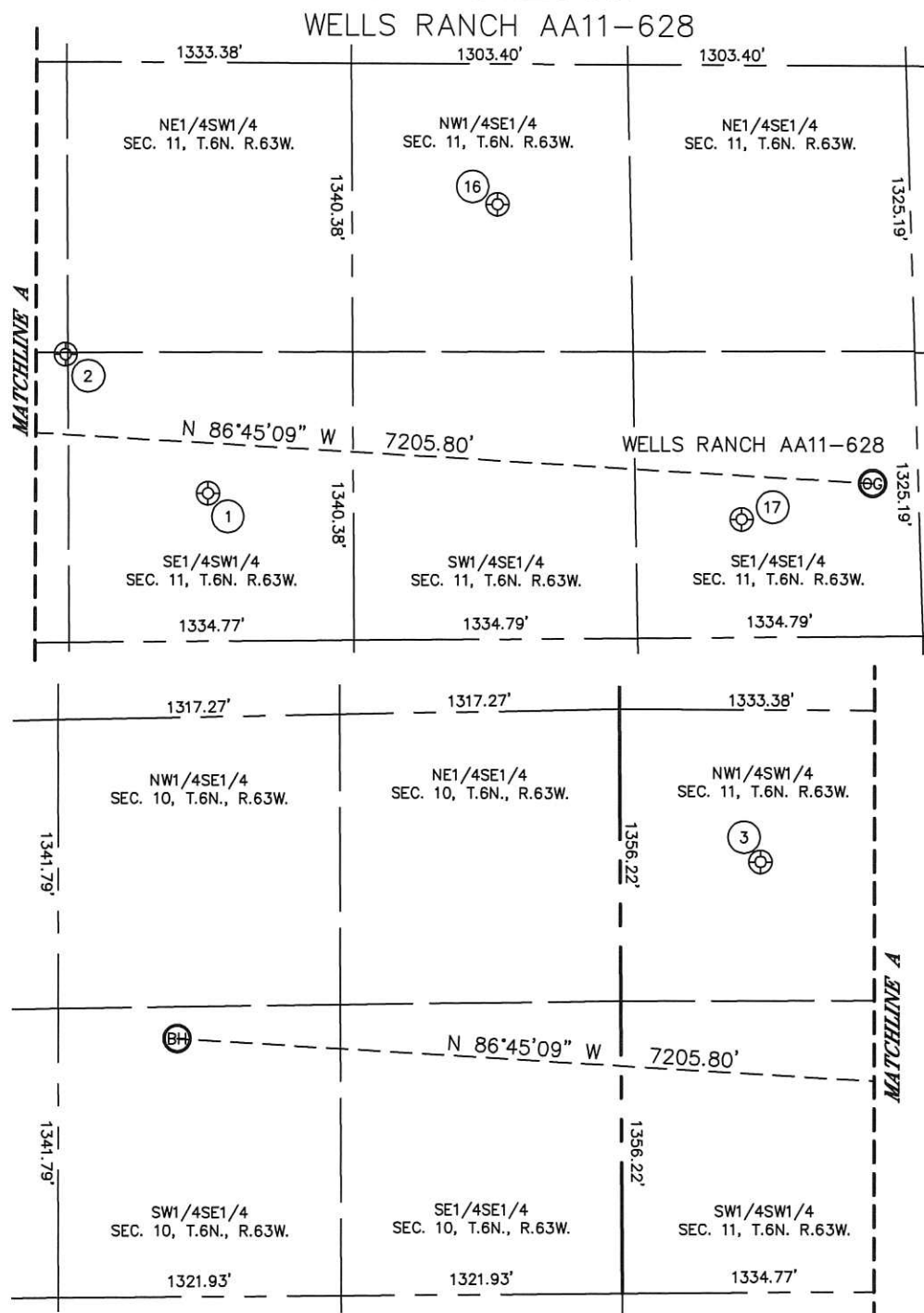
DATE: 10/6/2014  
PROJECT#: 2014168



Lat40 , Inc. 6250 W. 10th Street, Unit 2, Greeley, CO 970-515-5294

## SITE SKETCH

SECTION: 11  
TOWNSHIP: 6N  
RANGE: 63W



WELL NO.	WELL NAME	SHL FOOTAGE				SHL LAT°	SHL LONG°	PDOP	ELEV (FT.)	1/4/1/4
1	WELLS RANCH USX AA 11-14	689	FSL	1984	FWL	40.49575	-104.40624	1.8	4803	SESW
2	WELLS RANCH USX AA 11-25	1339	FSL	1323	FWL	40.49754	-104.40861	1.9	4801	SWSW
3	WELLS RANCH USX AA 11-12	1997	FSL	659	FWL	40.49935	-104.41098	1.9	4784	NWSW
16	WELLS RANCH USX AA 11-10P	2020	FSL	1937	FEL	40.49940	-104.40131	1.8	4834	NWSE
17	WELLS RANCH USX AA 11-16P	550	FSL	847	FEL	40.49536	-104.39722	2.0	4829	SESE

DATE: 10/6/2014  
PROJECT#: 2014168