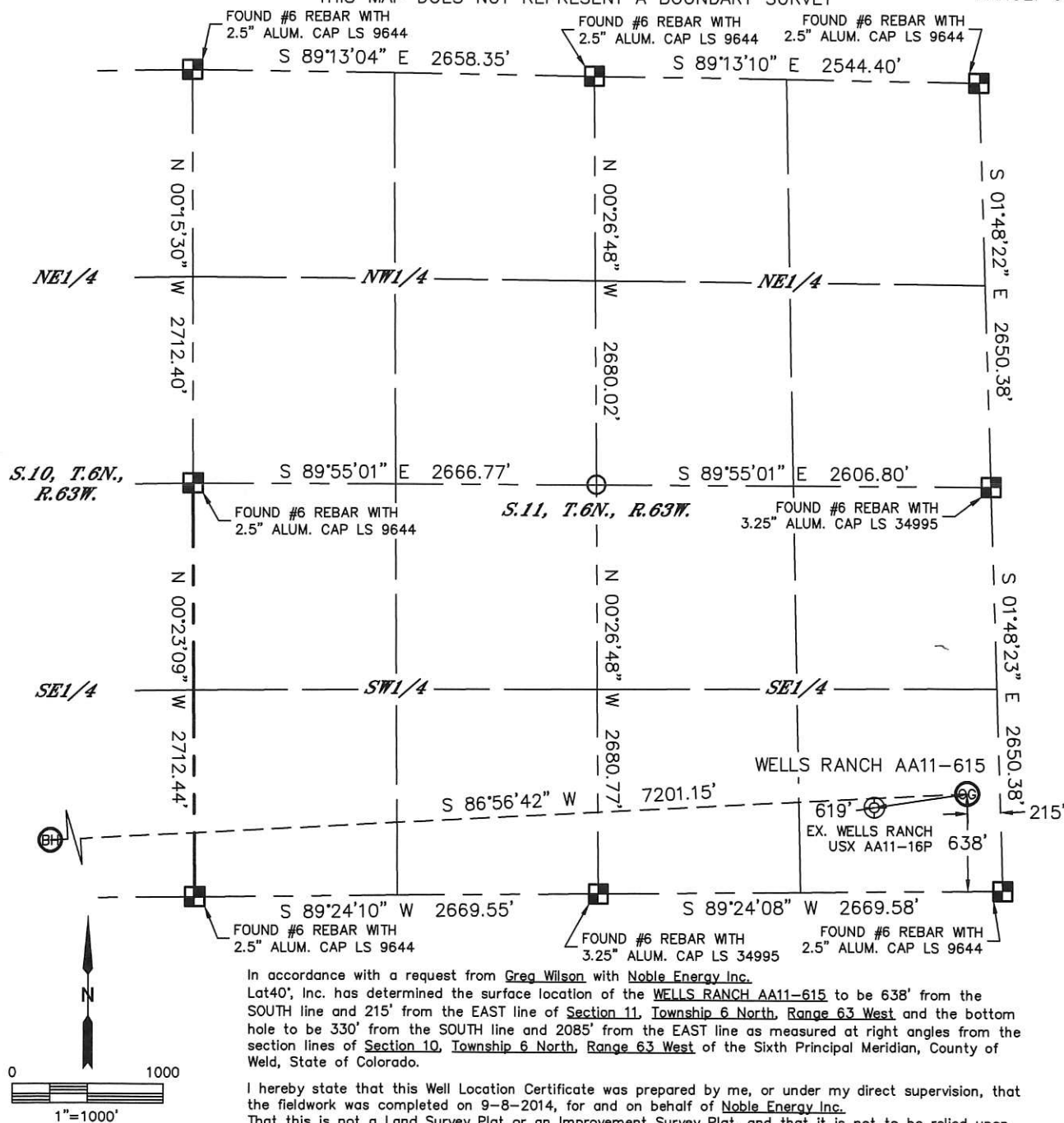


Lat40°, Inc. 6250 W. 10th Street, Unit 2, Greeley, CO 970-515-5294

WELL LOCATION CERTIFICATE

SECTION: 11
TOWNSHIP: 6N
RANGE: 63W

THIS MAP DOES NOT REPRESENT A BOUNDARY SURVEY



In accordance with a request from Greg Wilson with Noble Energy Inc., Lat40th, Inc. has determined the surface location of the WELLS RANCH AA11-615 to be 638' from the SOUTH line and 215' from the EAST line of Section 11, Township 6 North, Range 63 West and the bottom hole to be 330' from the SOUTH line and 2085' from the EAST line as measured at right angles from the section lines of Section 10, Township 6 North, Range 63 West of the Sixth Principal Meridian, County of Weld, State of Colorado.

I hereby state that this Well Location Certificate was prepared by me, or under my direct supervision, that the fieldwork was completed on 9-8-2014, for and on behalf of Noble Energy Inc. That this is not a Land Survey Plat or an Improvement Survey Plat, and that it is not to be relied upon for establishment of fence, building, or other future improvement lines.

NOTE:

- 1) Bearings shown are Grid Bearings of the Colorado State Plane Coordinate System, North Zone, North American Datum 1983. The lineal dimensions as contained herein are based upon the "U.S. Survey Foot."
2) Ground elevations are based on an observed GPS elevation (NAVD 1988 DATUM).
3) IMPROVEMENTS: See LOCATION DRAWING for all visible improvements within 500' of disturbed area.
4) SURFACE USE: RANGELAND
5) INSTRUMENT OPERATOR: WYATT HALL
6) NEAREST EXISTING WELL: ±619' SW (WELLS RANCH USX AA11-16P)
NEAREST CULTURAL ITEMS:
BUILDING: ±4546' S
BUILDING UNIT: ±4708' SW
HIGH OCCUPANCY BUILDING UNIT: 5280'+
DESIGNATED OUTSIDE ACTIVITY AREA: 5280'+
PUBLIC ROAD: ±5093' W (CR 69)
ABOVEGROUND UTILITY: 5280'+
RAILROAD: 5280'+
PROPERTY LINE: ±215' E
- LEGEND
■ = ALIQUOT MONUMENT AS DE
○ = CALCULATED POSITION

SURFACE LOCATION



LAT: 40.49560°N
LONG: 104.39502°W
PDOP: 2.5
ELEV: 4832'
1/4, 1/4: SESE

BOTTOM HOLE

LAT: 40.49479°N
LONG: 104.42088°W



LEGEND

-  = ALIQUOT MONUMENT AS DESCRIBED
 = CALCULATED POSITION

SHEET 1 OF 2

Kyle E. Rutz—On behalf of
Colorado Licensed Professional
Land Surveyor No. 38307

DATE: 10/6/2014
PROJECT#: 2014168

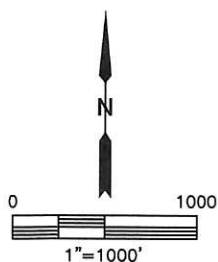
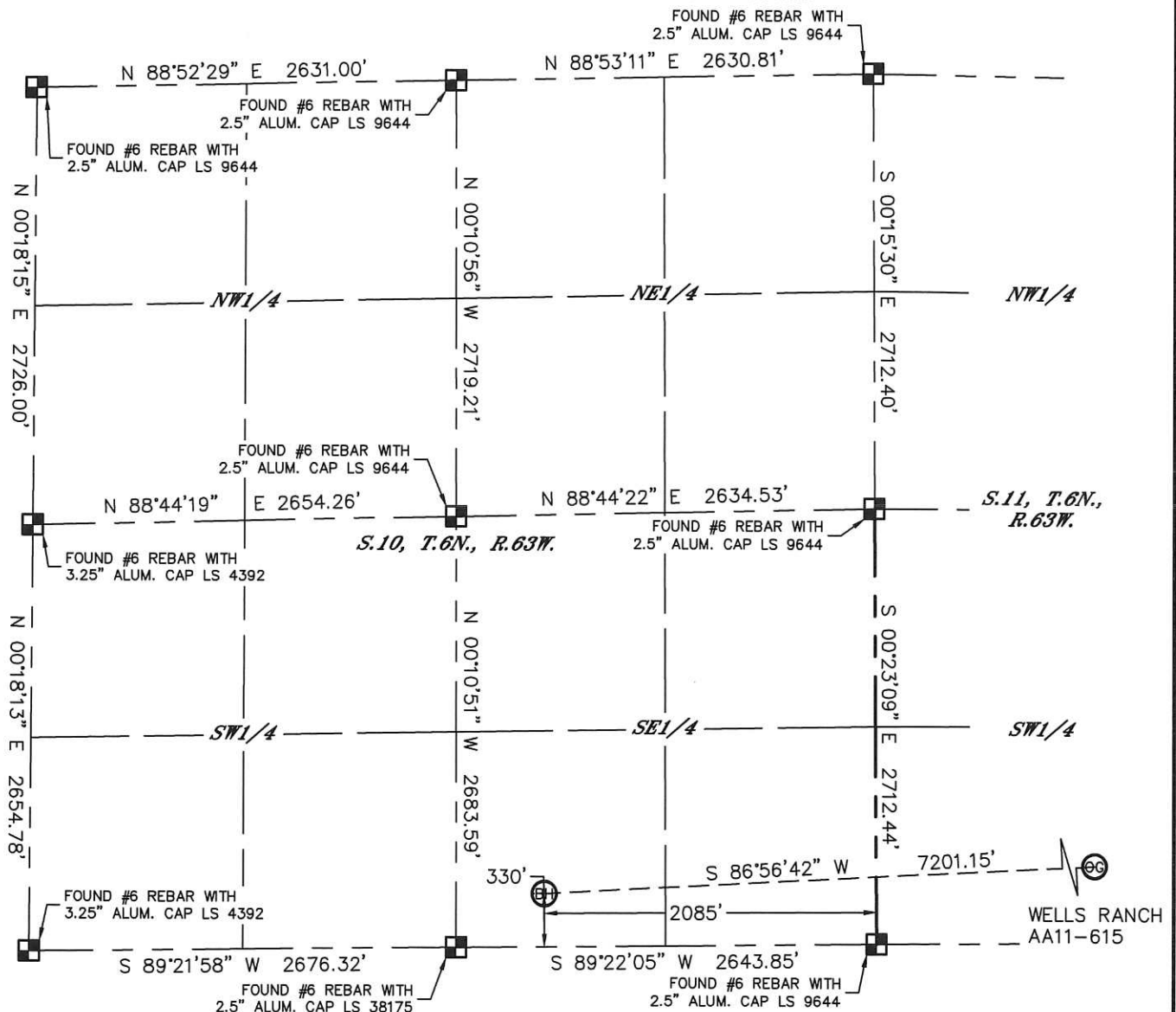


Lat40°, Inc. 6250 W. 10th Street, Unit 2, Greeley, CO 970-515-5294

WELL LOCATION CERTIFICATE

SECTION: 11
TOWNSHIP: 6N
RANGE: 63W

THIS MAP DOES NOT REPRESENT A BOUNDARY SURVEY



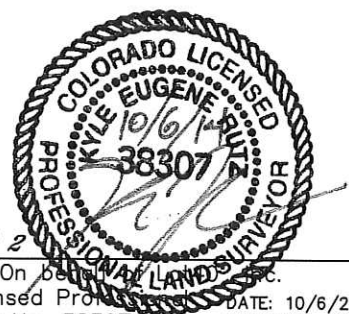
LEGEND

- = ALIQUOT MONUMENT AS DESCRIBED
- = CALCULATED POSITION

SHEET 2 OF 2

Kyle E. Rutz-On 6th National Land Surveyor
Colorado Licensed Professional Land Surveyor
Land Surveyor No. 38307

DATE: 10/6/2014
PROJECT#: 2014168

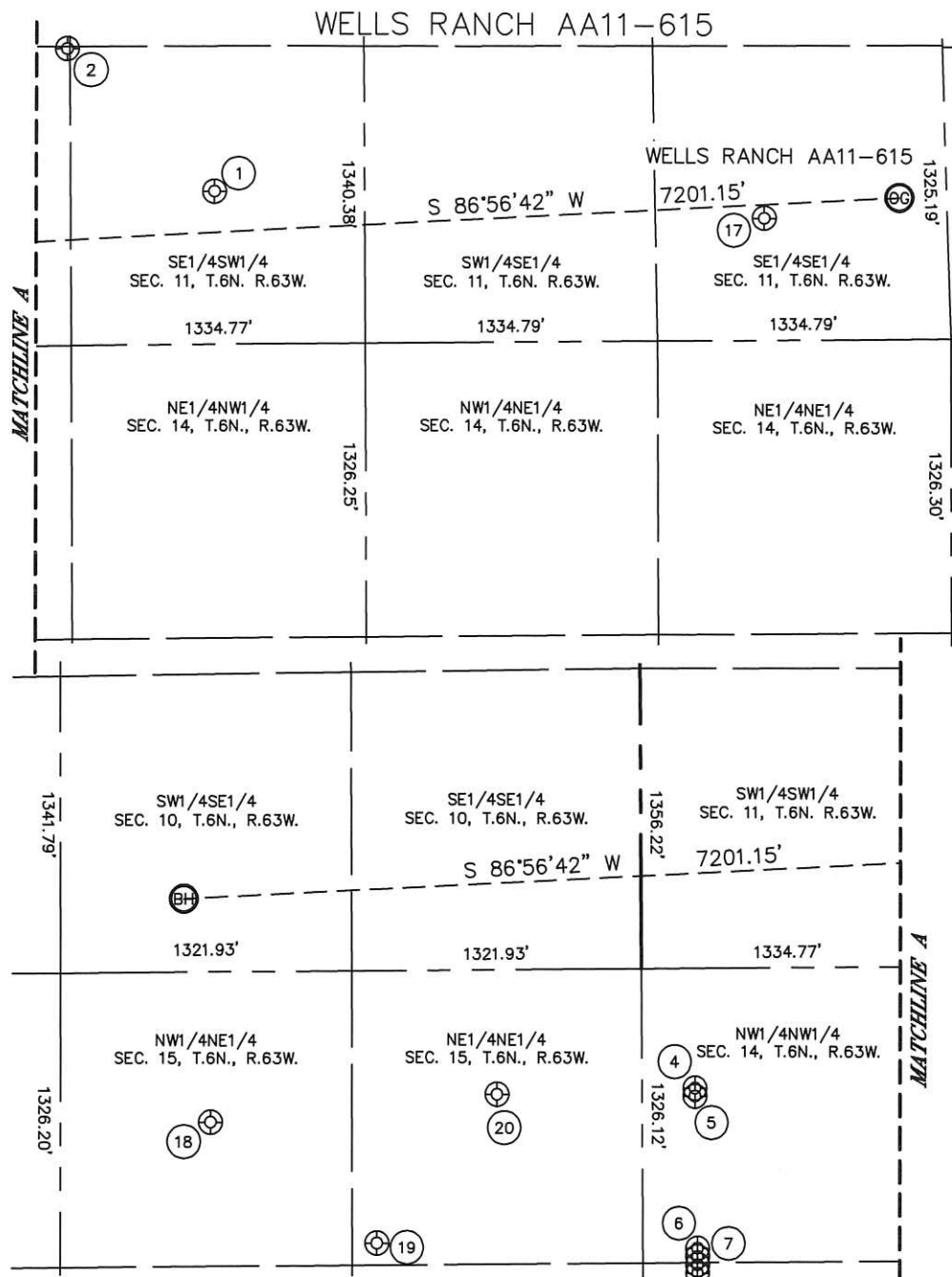




Lat40 , Inc. 6250 W. 10th Street, Unit 2, Greeley, CO 970-515-5294

SITE SKETCH

SECTION: 11
TOWNSHIP: 6N
RANGE: 63W



WELL NO.	WELL NAME	SHL FOOTAGE				SHL LAT°	SHL LONG°	PDOP	ELEV (FT.)	1/4/1/4
1	WELLS RANCH USX AA 11-14	689	FSL	1984	FWL	40.49575	-104.40624	1.8	4803	SESW
2	WELLS RANCH USX AA 11-25	1339	FSL	1323	FWL	40.49754	-104.40861	1.9	4801	SWSW
4	WELLS RANCH STATE PC USX AA 16-69-1HNL	540	FNL	241	FWL	40.49239	-104.41254	2.1	4780	NWNW
5	WELLS RANCH STATE USX AA 16-68-1HNL	576	FNL	240	FWL	40.49229	-104.41254	2.0	4780	NWNW
6	WELLS RANCH AA 14-69-1HN	1261	FNL	250	FWL	40.49041	-104.41252	1.7	4781	NWNW
7	WELLS RANCH AA 14-68-1HN	1298	FNL	249	FWL	40.49031	-104.41252	1.7	4781	NWNW
17	WELLS RANCH USX AA 11-16P	550	FSL	847	FEL	40.49536	-104.39722	2.0	4829	SESE
18	WELLS RANCH USX AA 15-02	677	FNL	1968	FEL	40.49202	-104.42048	1.7	4751	NWNE
19	WELLS RANCH USX AA 15-17	1228	FNL	1213	FEL	40.49051	-104.41777	1.9	4775	NENE
20	WELLS RANCH USX AA 15-01	561	FNL	661	FEL	40.49234	-104.41578	1.9	4784	NENE

DATE: 10/6/2014
PROJECT#: 2014168