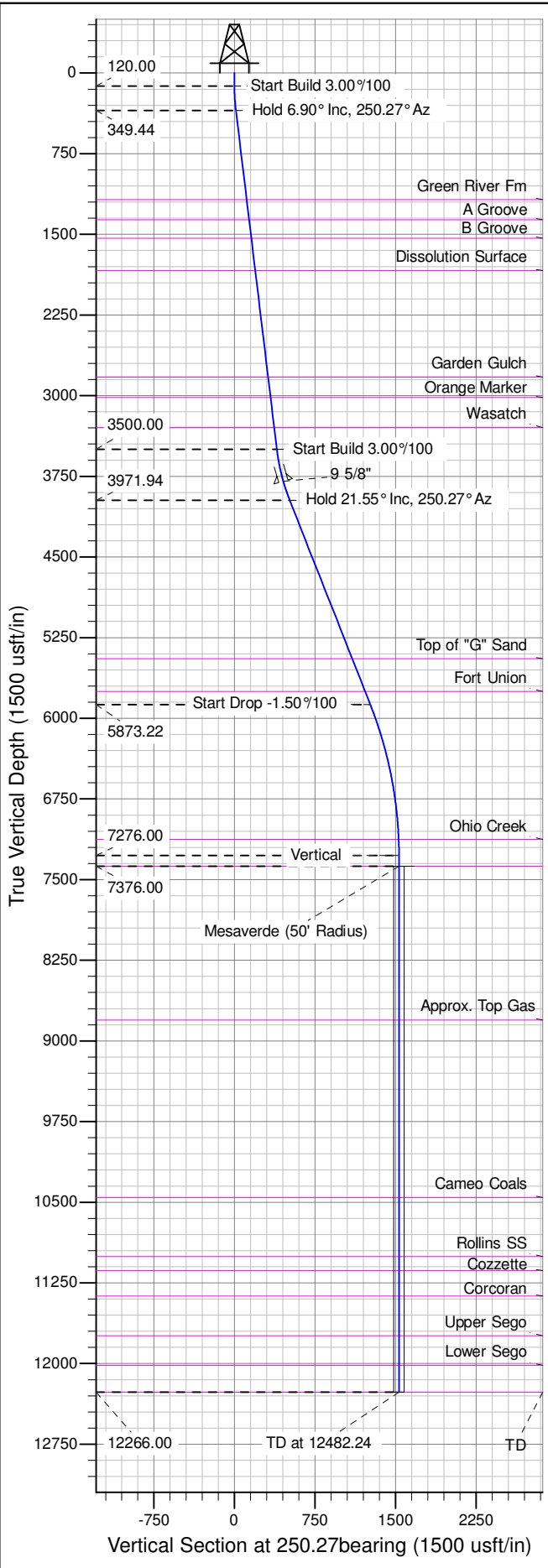
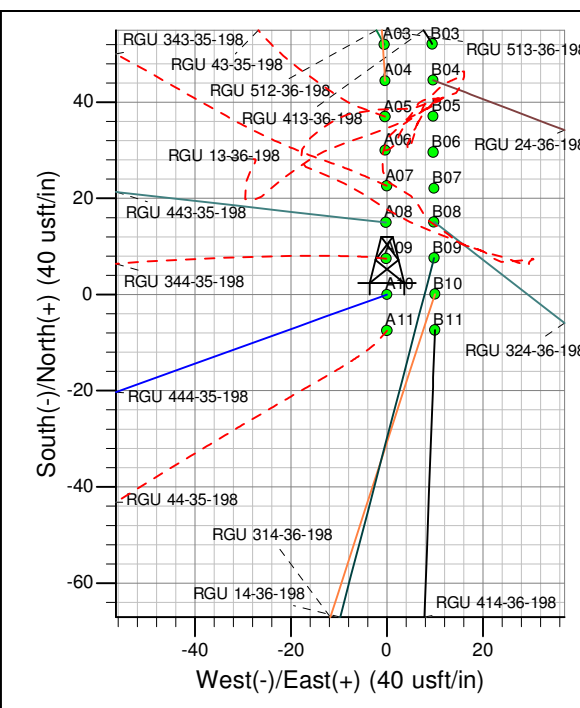
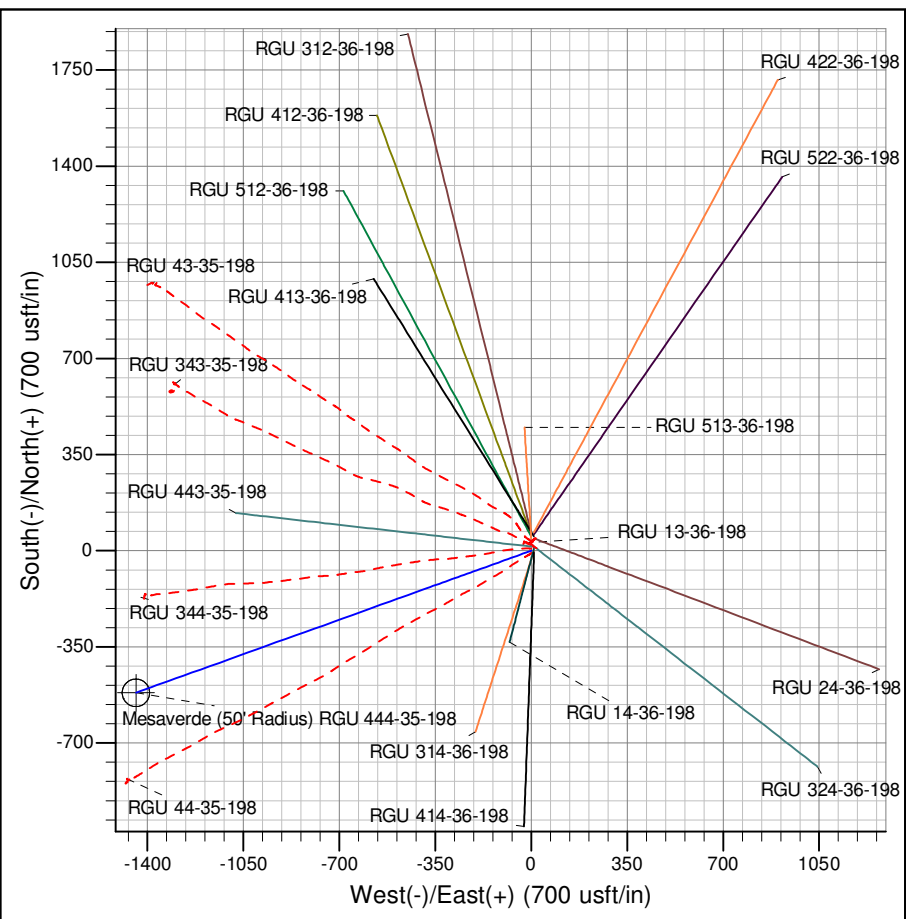




Well Name: RGU 444-35-198
Surface Location: RGU 13-36-198 Pad
North American Datum 1983 , US State Plane 1983 , Colorado Central Zone
Ground Elevation: 6680.00
+N/-S +E/-W Northing Easting Latitude Longitude Slot
0.00 0.00 1771296.90 2201046.20 39.916635 -108.348646 A10
KELLY BUSHING @ 6706.00usft (Cyclone 29 (26' RKB) mab)



ANNOTATIONS										
TVD	MD	Inc	Azi	+N/-S	+E/-W	Vsect	Departure	Annotation		
120.00	120.00	0.00	0.00	0.00	0.00	0.00	0.00	Start Build 3.00°/100		
349.44	350.00	6.90	250.27	-4.67	-13.02	13.83	13.83	Hold 6.90° Inc, 250.27° Az		
3500.00	3523.54	6.90	250.27	-133.38	-371.90	395.09	395.09	Start Build 3.00°/100		
3971.94	4011.74	21.55	250.27	-173.77	-484.49	514.71	514.71	Hold 21.55° Inc, 250.27° Az		
5873.22	6055.85	21.55	250.27	-427.24	-1191.10	1265.41	1265.41	Start Drop -1.50°/100		
7276.00	7492.24	0.00	0.00	-517.36	-1442.33	1532.31	1532.31	Vertical		
7376.00	7592.24	0.00	0.00	-517.36	-1442.33	1532.31	1532.31	Mesaverde		
12266.00	12482.24	0.00	0.00	-517.36	-1442.33	1532.31	1532.31	TD at 12482.24		



Azimuths to True North
Magnetic North: 10.14°

Magnetic Field
Strength: 52097.9snT
Dip Angle: 65.93°
Date: 9/18/2014
Model: IGRF2010

Project: RG 36-01S-098W
Site: RGU 13-36-198 Pad
Well: RGU 444-35-198
Design #1 18Sep14 mab