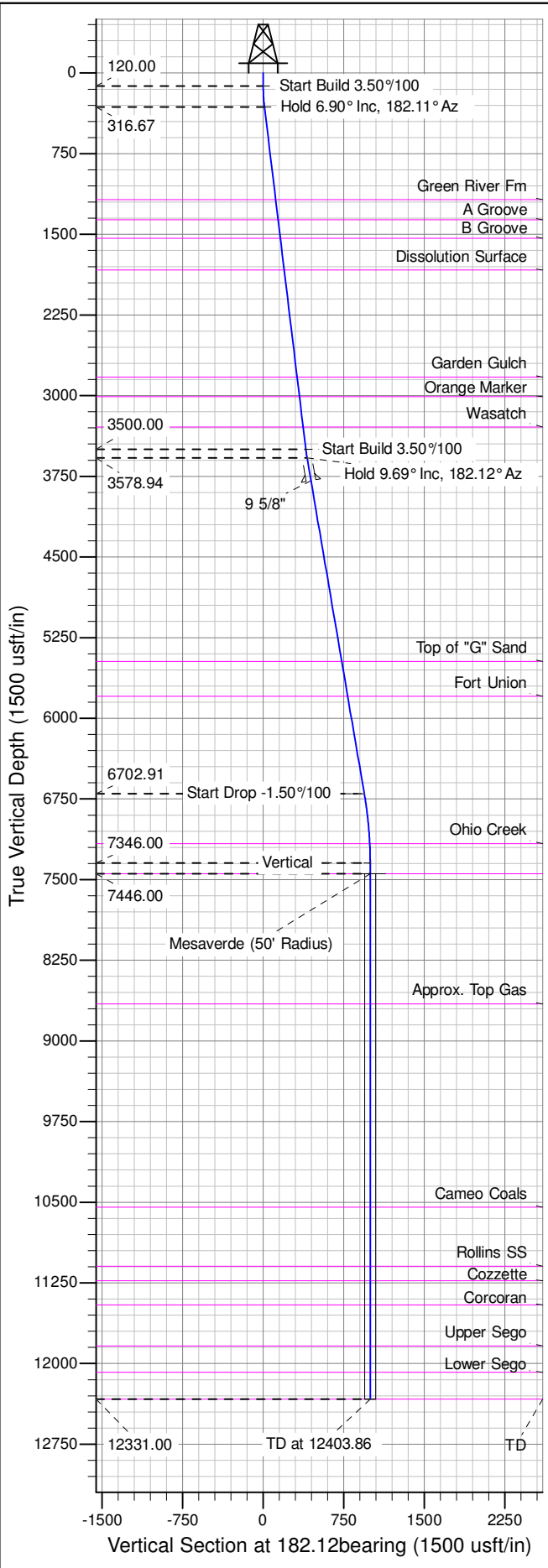
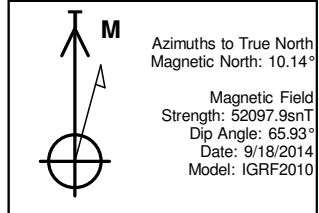
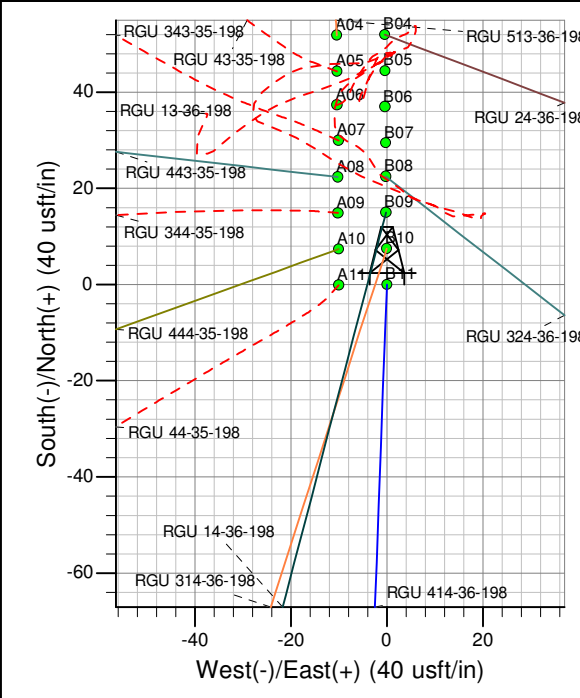
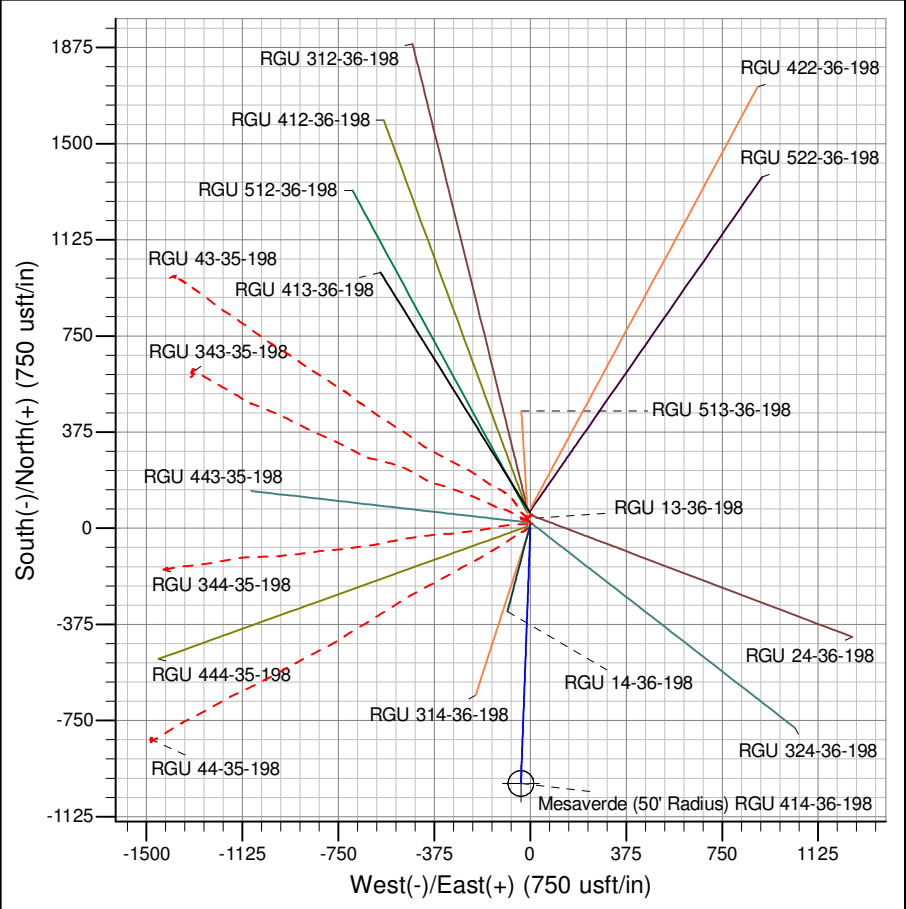




Well Name: RGU 414-36-198
Surface Location: RGU 13-36-198 Pad
North American Datum 1983 , US State Plane 1983 , Colorado Central Zone
Ground Elevation: 6680.00
+N/-S +E/-W Northing Easting Latitude Longitude Slot
0.00 0.00 1771289.20 2201056.00 39.916615 -108.348610 B11
KELLY BUSHING @ 6706.00usft (Cyclone 29 (26' RKB) mab)



ANNOTATIONS									
TVD	MD	Inc	Azi	+N/-S	+E/-W	Vsect	Departure	Annotation	
120.00	120.00	0.00	0.00	0.00	0.00	0.00	0.00	Start Build	3.50%/100
316.67	317.14	6.90	182.11	-11.85	-0.44	11.86	11.86	Hold 6.90° Inc,	182.11° Az
3500.00	3523.70	6.90	182.11	-396.81	-14.62	397.08	397.08	Start Build	3.50%/100
3578.94	3603.49	9.69	182.12	-408.32	-15.05	408.59	408.59	Hold 9.69° Inc,	182.12° Az
6702.91	6772.69	9.69	182.12	-941.52	-34.77	942.16	942.16	Start Drop	-1.50%/100
7346.00	7418.86	0.00	0.00	-996.01	-36.79	996.69	996.69	Vertical	
7446.00	7518.86	0.00	0.00	-996.01	-36.79	996.69	996.69	Mesaverde	
12331.00	12403.86	0.00	0.00	-996.01	-36.79	996.69	996.69	TD at 12403.86	



Project: RG 36-01S-098W
Site: RGU 13-36-198 Pad
Well: RGU 414-36-198
Design #1 18Sep14 mab