

MD 2780 TVD 2761.54
INC 11.14 AZ 125.23
VS 200.68

ROP (Fe/H)
Gamma (API)

1500
350

MD 2875 TVD 2855.2
INC 8.07 AZ 125.91
VS 213.96

2700'- 2800': SLTST: 60% LTGY -
MEDLTGY, FRI, FN TO MED GRN, W
SRTD, CALC CMT, SANDY, SILTY,
IMBD PYR, IMBD SS LAMN, INTGR
POR, NO STN, NO FLOR, NO O
FLOR, NO CUT, NO RNG

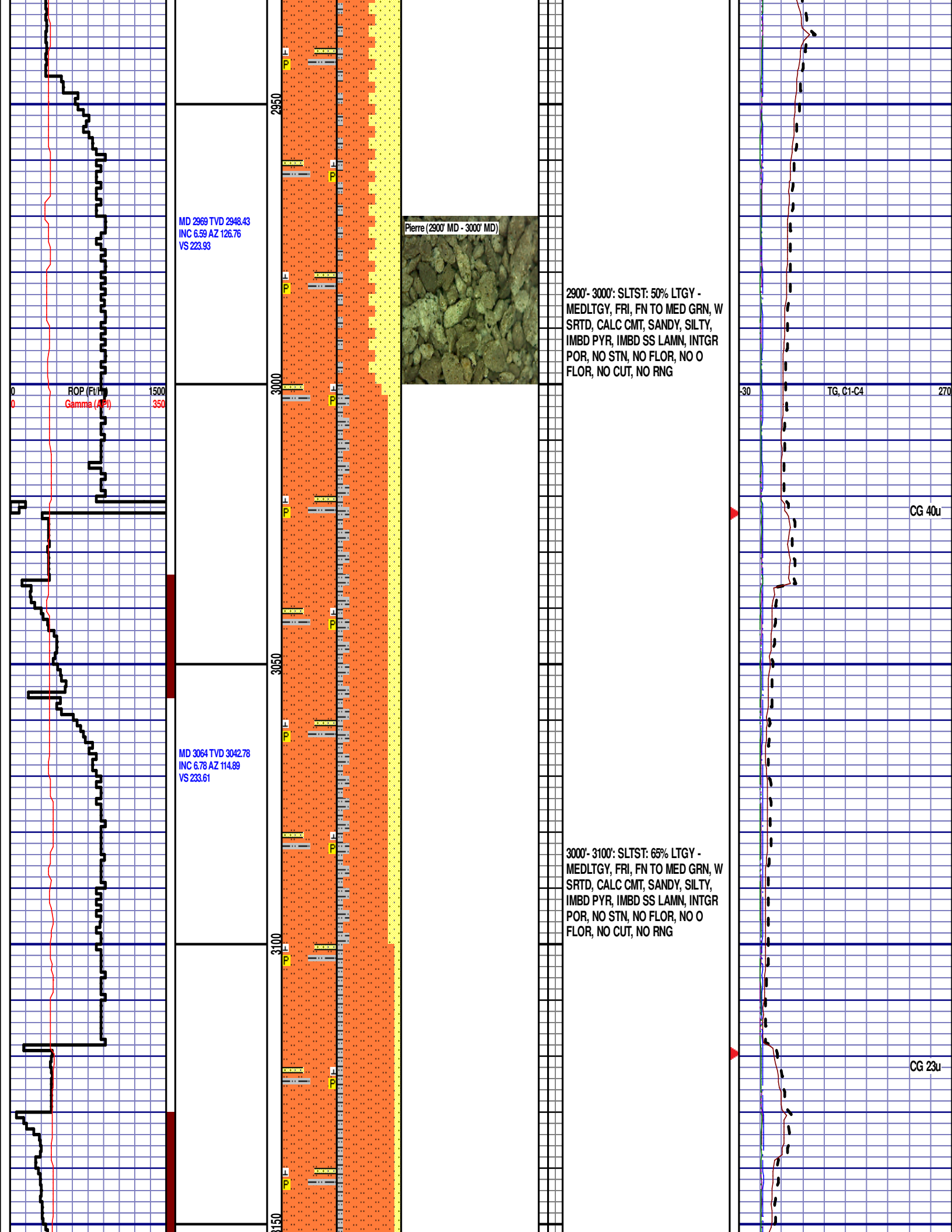
2800'- 2900': SLTST: 55% LTGY -
MEDLTGY, FRI, FN TO MED GRN, W
SRTD, CALC CMT, SANDY, SILTY,
IMBD PYR, IMBD SS LAMN, INTGR
POR, NO STN, NO FLOR, NO O
FLOR, NO CUT, NO RNG

CG 63u

TG, C1-C4

CG 38u

CG 48u



MD 3159 TVD 3137.15
INC 6.47 AZ 114.31
VS 243.76

ROP (Fm)
Gamma (API)

1500
350

MD 3253 TVD 3230.35
INC 8.48 AZ 110.05
VS 255.29

MD 3348 TVD 3324.11
INC 10.04 AZ 120.03
VS 269.31

3200

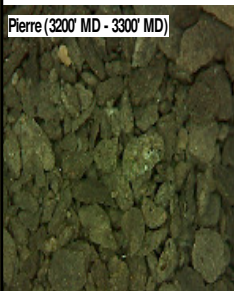
3250

3300

3350

3100'- 3200': SLTST: 80% LTGY -
MEDLTGY, FRI, FN TO MED GRN, W
SRTD, CALC CMT, SANDY, SILTY,
IMBD PYR, IMBD SS LAMN, INTGR
POR, NO STN, NO FLOR, NO O
FLOR, NO CUT, NO RNG

Pierre (3200' MD - 3300' MD)



3200'- 3300': SLTST: 60% LTGY -
MEDLTGY, FRI, FN TO MED GRN, W
SRTD, CALC CMT, SANDY, SILTY,
IMBD PYR, IMBD SS LAMN, INTGR
POR, NO STN, NO FLOR, NO O
FLOR, NO CUT, NO RNG

30

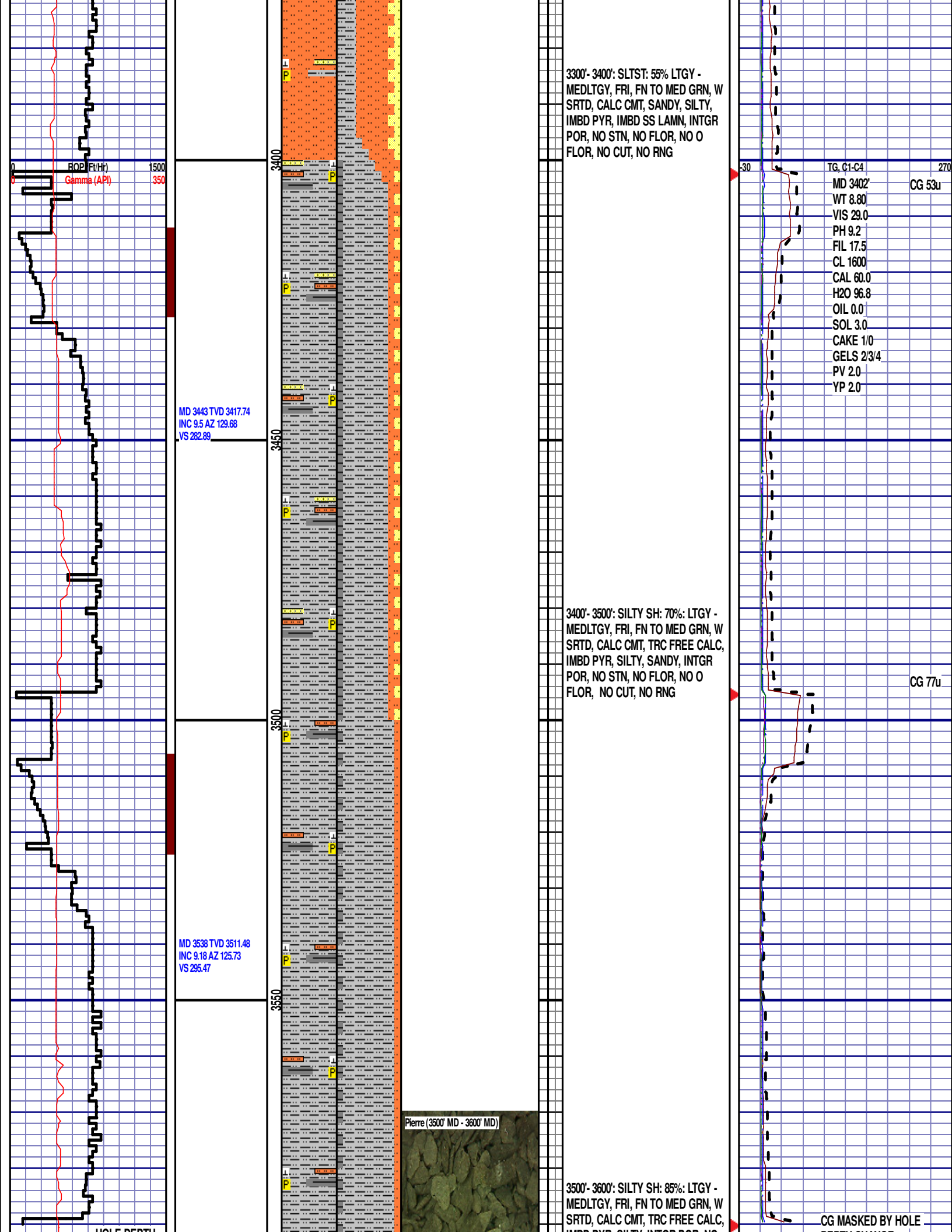
TG, C1-C4

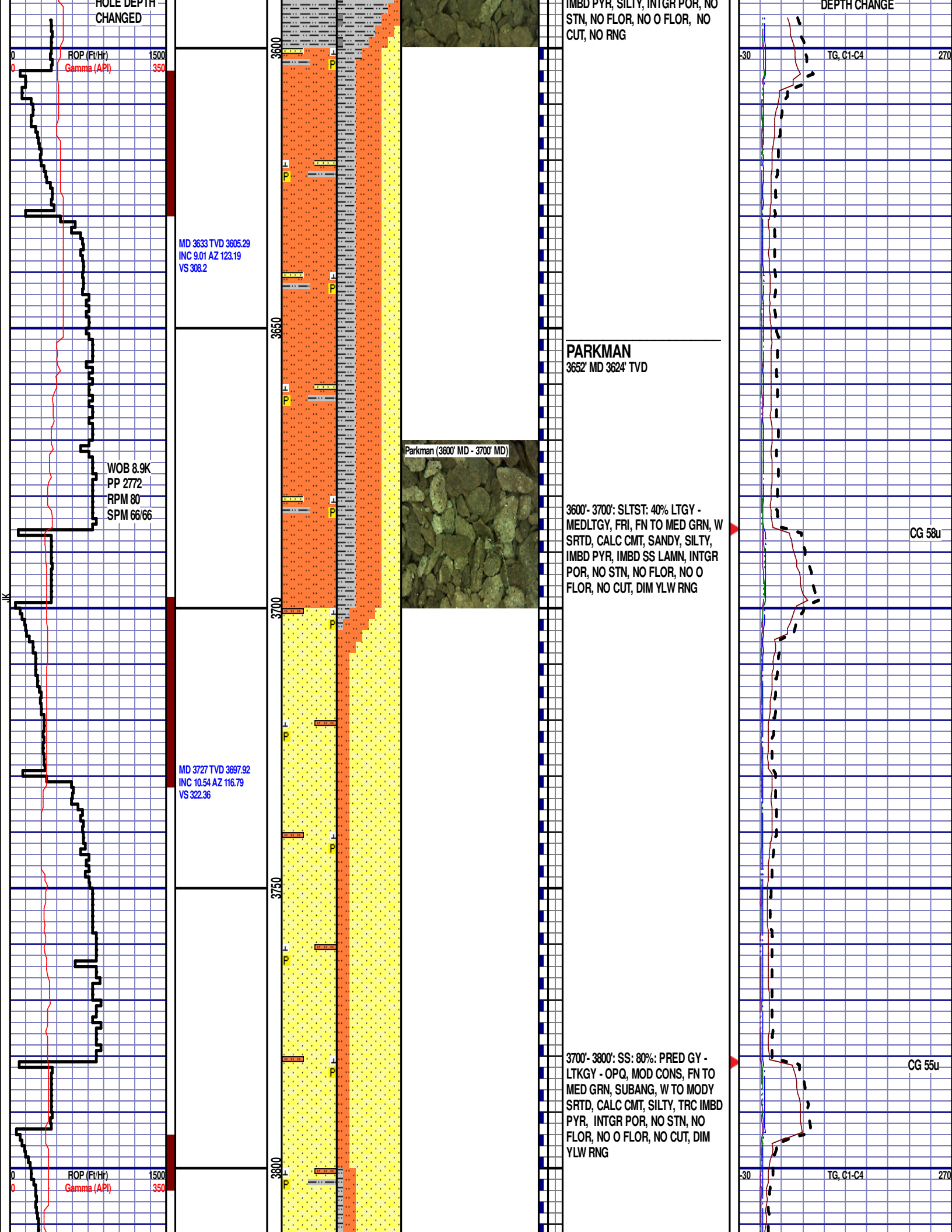
270

CG 20u

SHAKER SCREENS
CHANGED

CG 83u





MD 3822 TVD 3791
INC 12.55 AZ 113.14
VS 339.94

MD 3917 TVD 3883.6
INC 13.27 AZ 118.15
VS 359.42

MD 4011 TVD 3775.19
INC 12.76 AZ 125.29
VS 377.87

3850

3900

3950

4000

3800'- 3900': SS: 70%: PRED GY -
LTKGY - OPQ, MOD CONS, FN TO
MED GRN, SUBANG, W TO MODY
SRTD, CALC CMT, SILTY, TRC IMBD
PYR, INTGR POR, NO STN, NO
FLOR, NO O FLOR, NO CUT, DIM
YLW RNG

Parkman (3900' MD - 4000' MD)

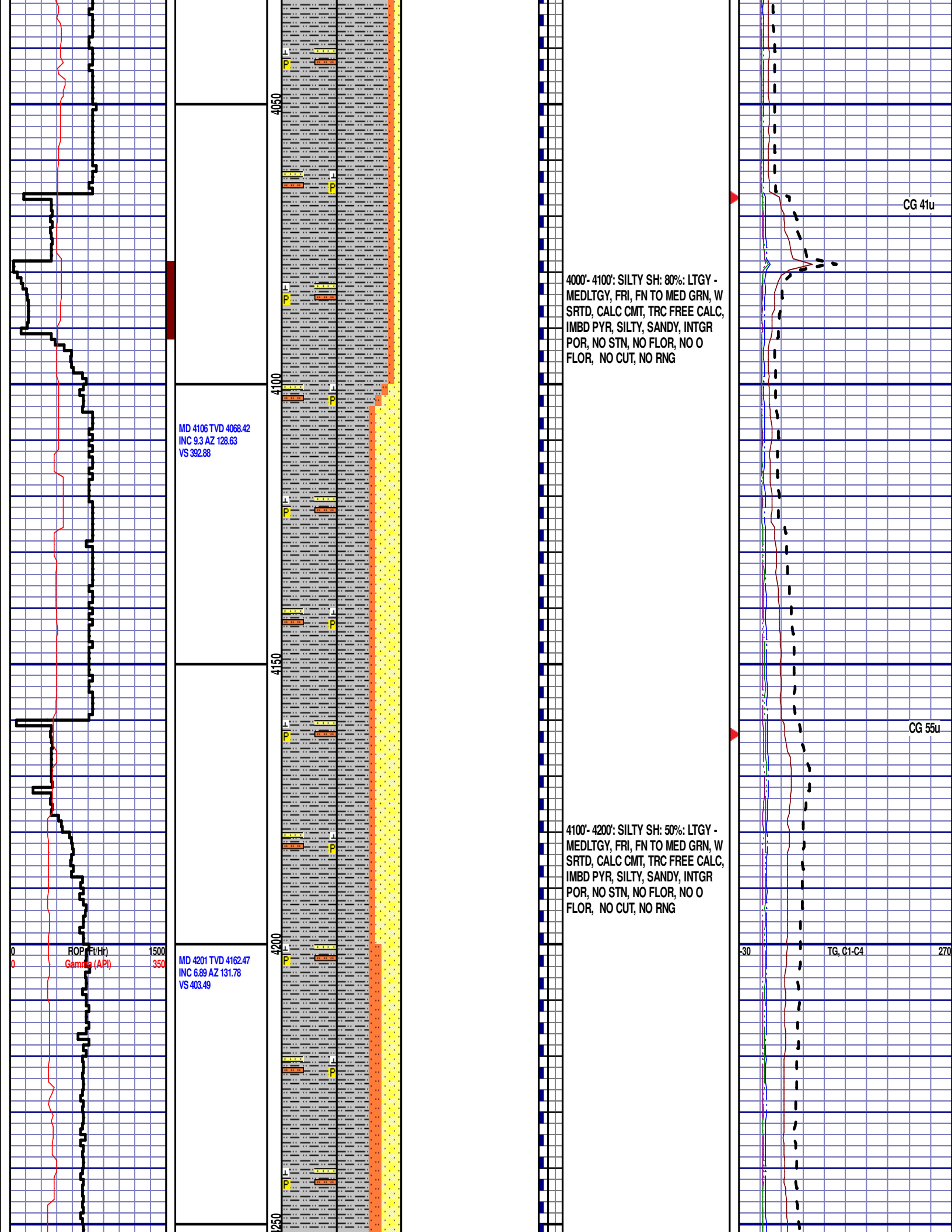
3900'- 4000': SLTST: 70% LTGY -
MEDLTGY, FRI, FN TO MED GRN, W
SRTD, CALC CMT, SANDY, SILTY,
IMBD PYR, IMBD SS LAMN, INTGR
POR, NO STN, NO FLOR, NO O
FLOR, NO CUT, DIM YLW RNG

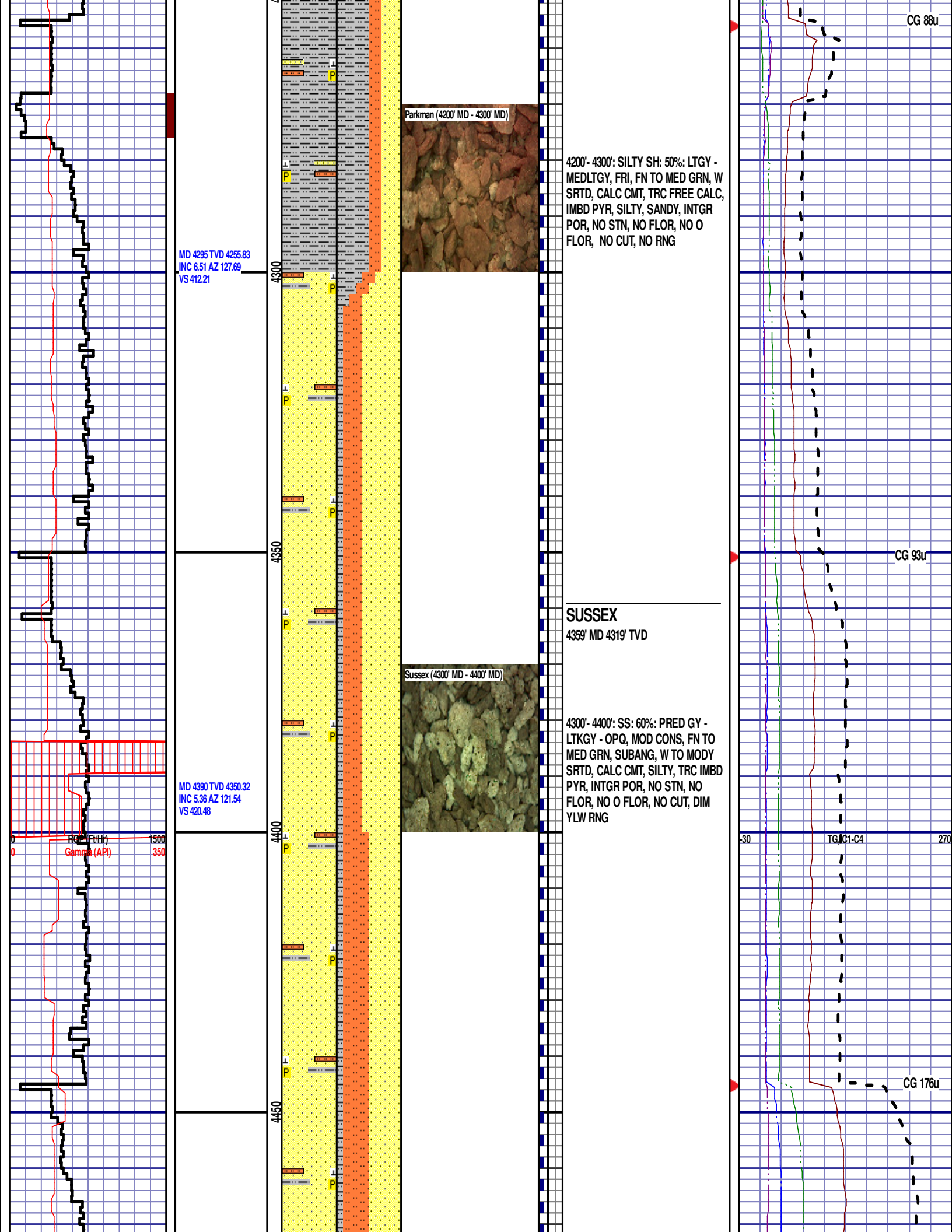
CG 64u

CG 38u

ROP (Ft/Hr)
Gamma (API)

TG, C1-C4





MD 4485 TVD 4444.91
INC 5.24 AZ 123.57
VS 428.07

MD 4580 TVD 4539.6
INC 3.92 AZ 124.83
VS 434.53

MD 4674 TVD 4633.47
INC 2.09 AZ 141.41
VS 438.37

4400'- 4500': SS: 50%: PRED GY -
LTKGY - OPQ, MOD CONS, FN TO
MED GRN, SUBANG, W TO MODY
SRTD, CALC CMT, SILTY, TRC IMBD
PYR, INTGR POR, NO STN, NO
FLOR, NO O FLOR, NO CUT, DIM
YLW RNG

4500'- 4600': SLTST: 80% LTGY -
MEDLTGY, FRI, FN TO MED GRN, W
SRTD, CALC CMT, TRC SANDY,
SILTY, IMBD PYR, IMBD SS LAMN,
INTGR POR, NO STN, NO FLOR, NO
O FLOR, NO CUT, DIM YLW RNG

4600'- 4700': SLTST: 80% LTGY -
MEDLTGY, FRI, FN TO MED GRN, W
SRTD, CALC CMT, TRC SANDY,
SILTY, IMBD PYR, IMBD SS LAMN,

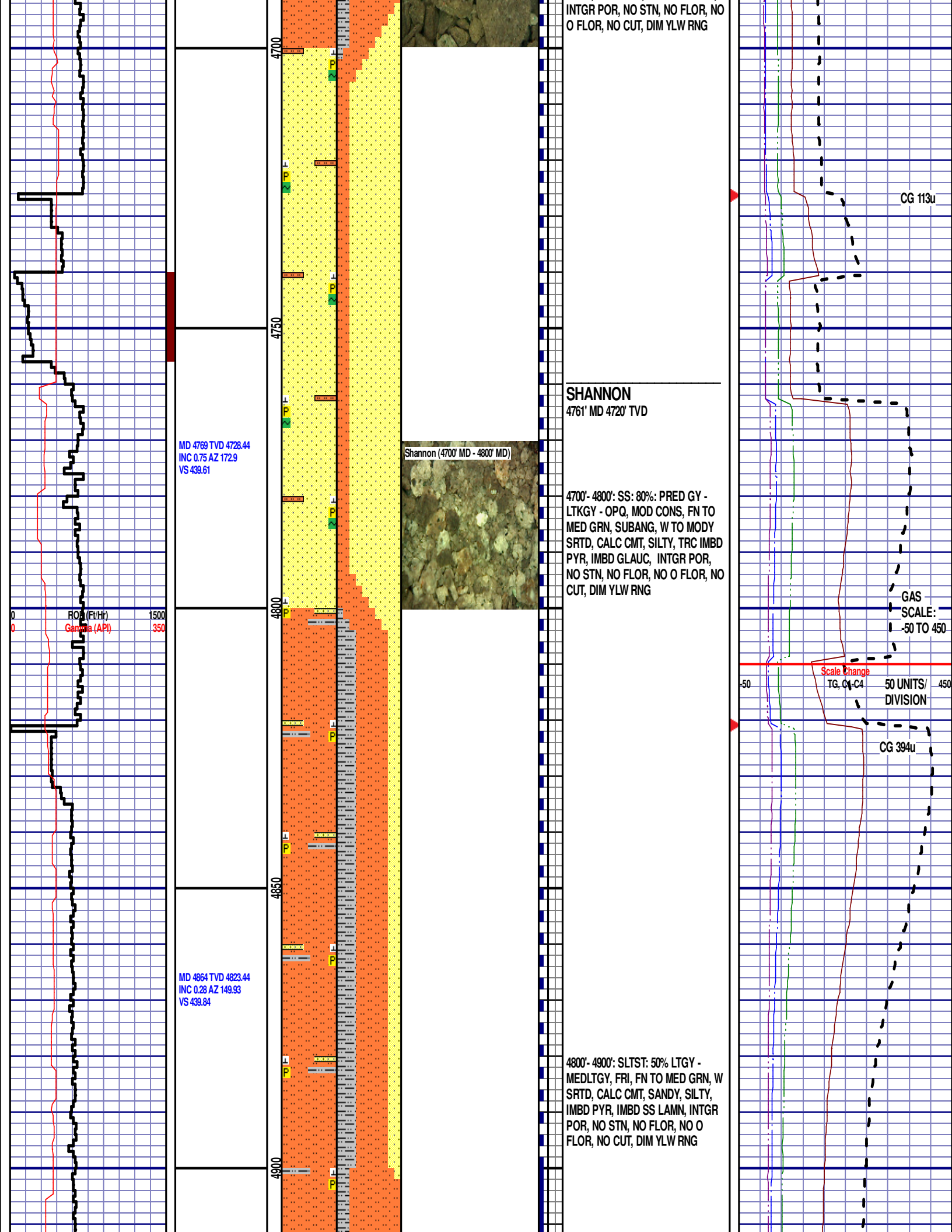
Sussex (4500' MD - 4600' MD)

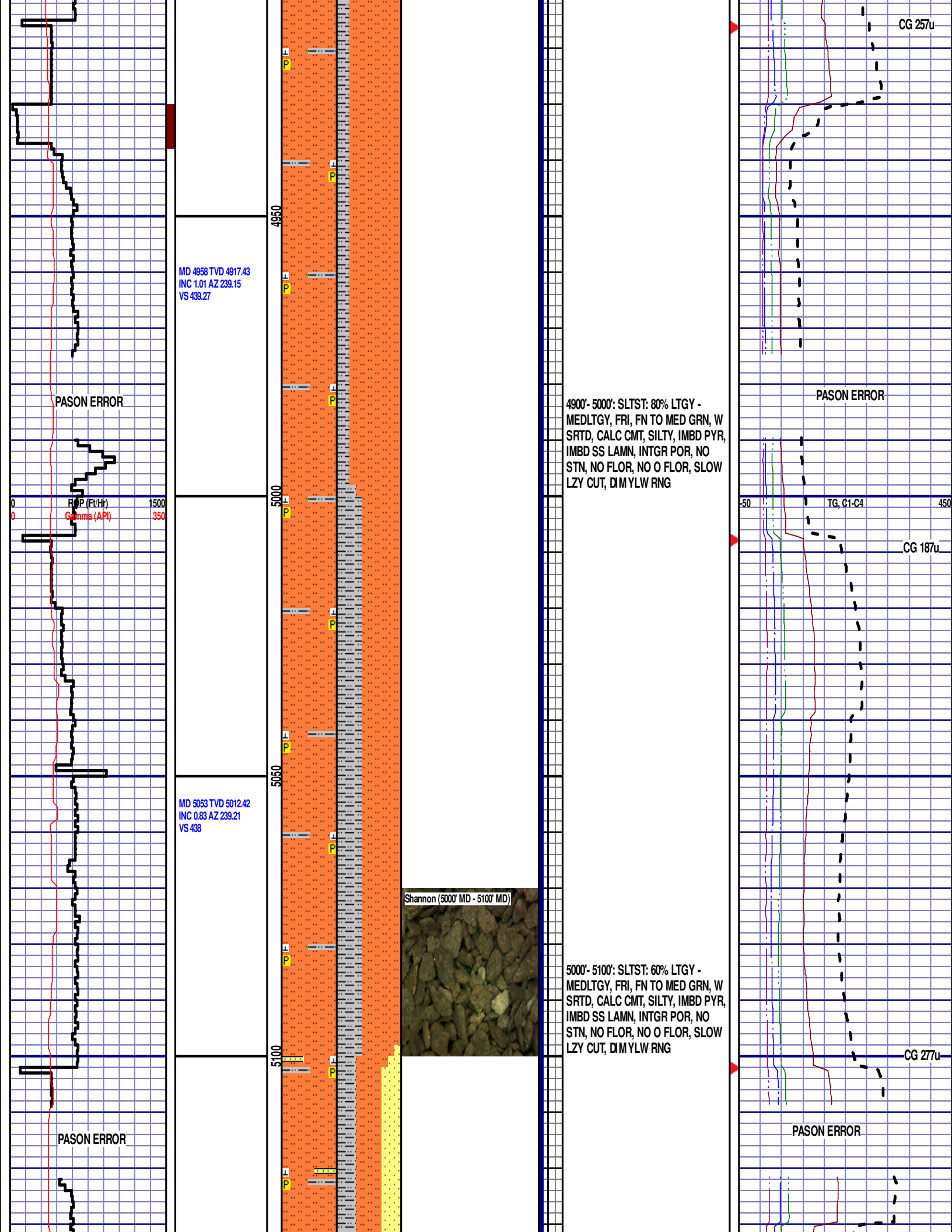
Sussex (4600' MD - 4700' MD)

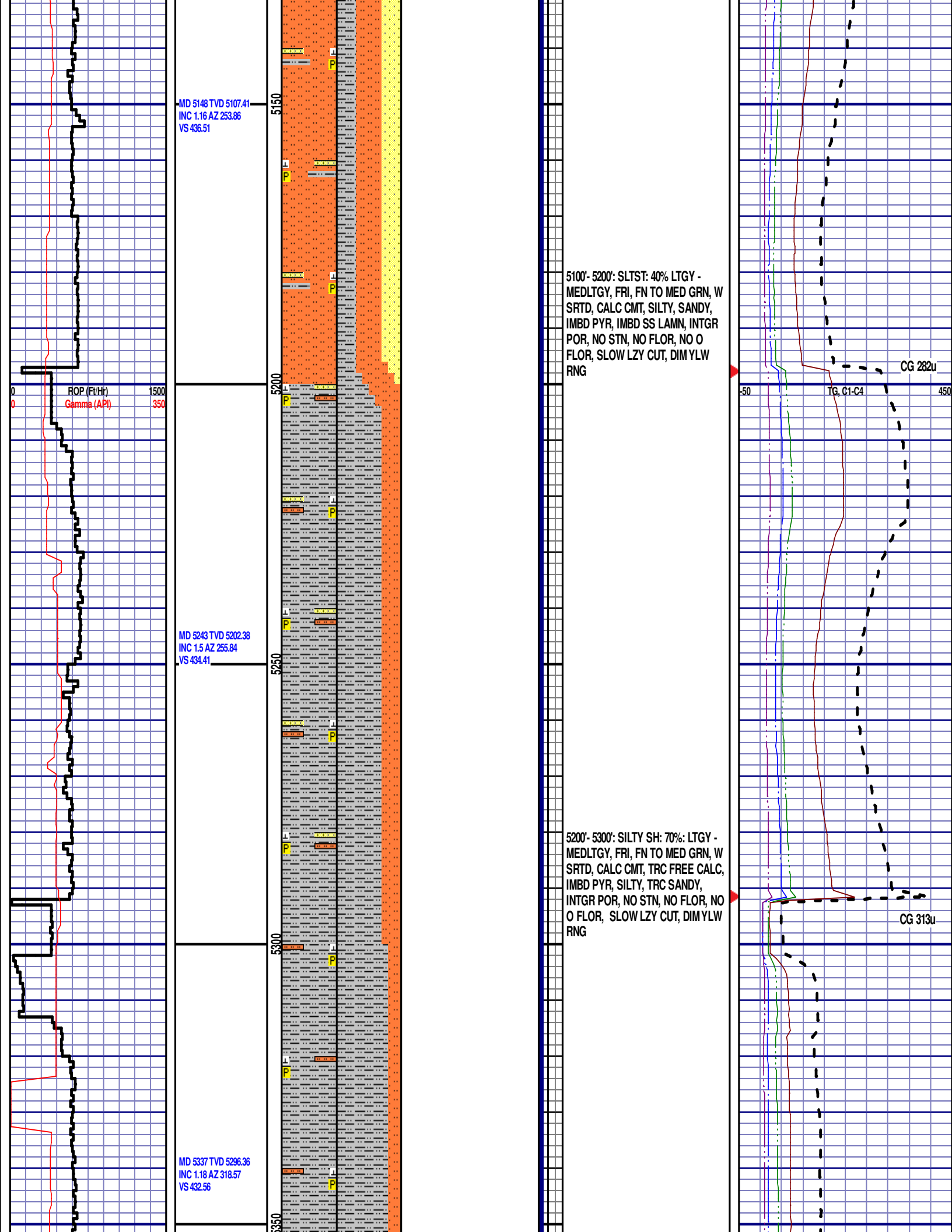
CG 122u

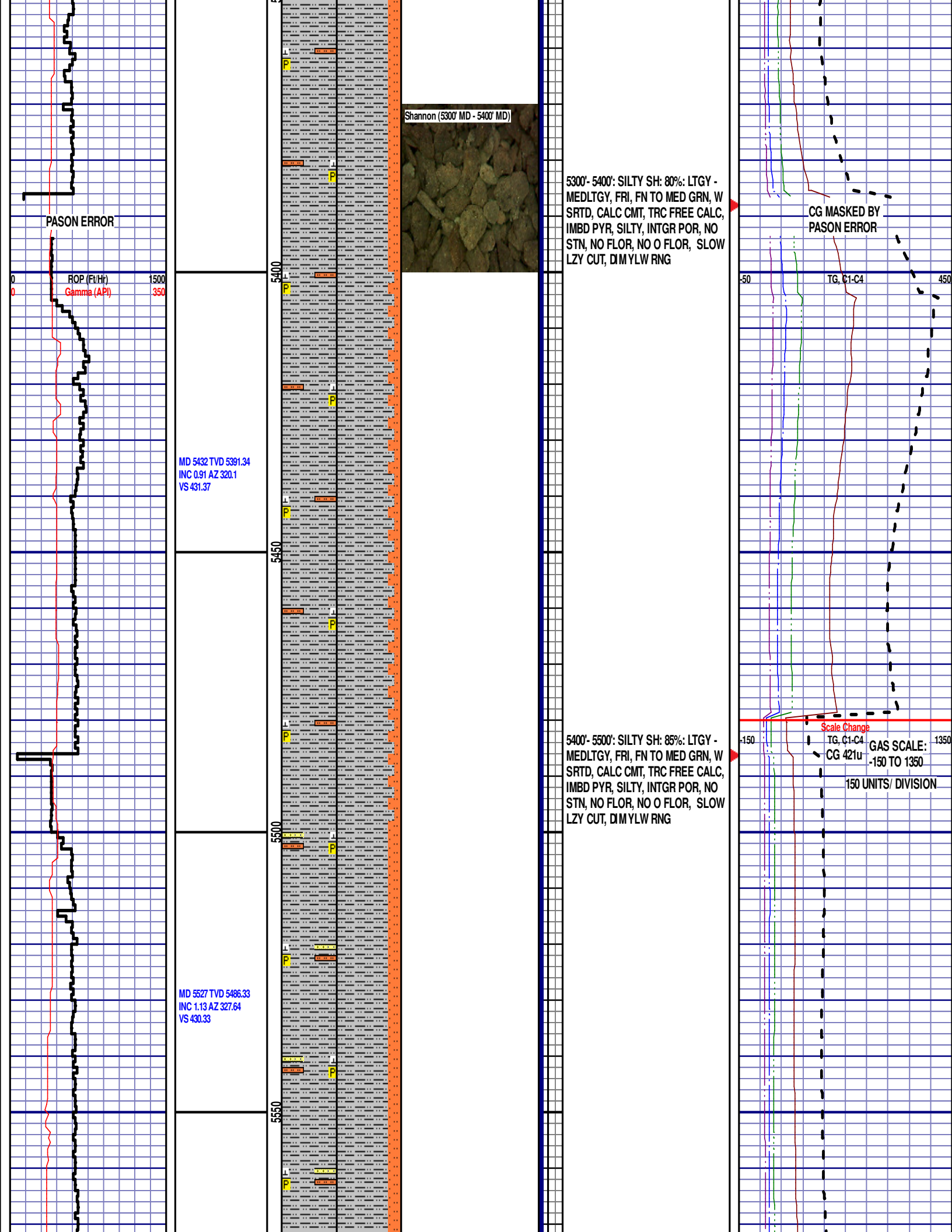
TG, C1-C4

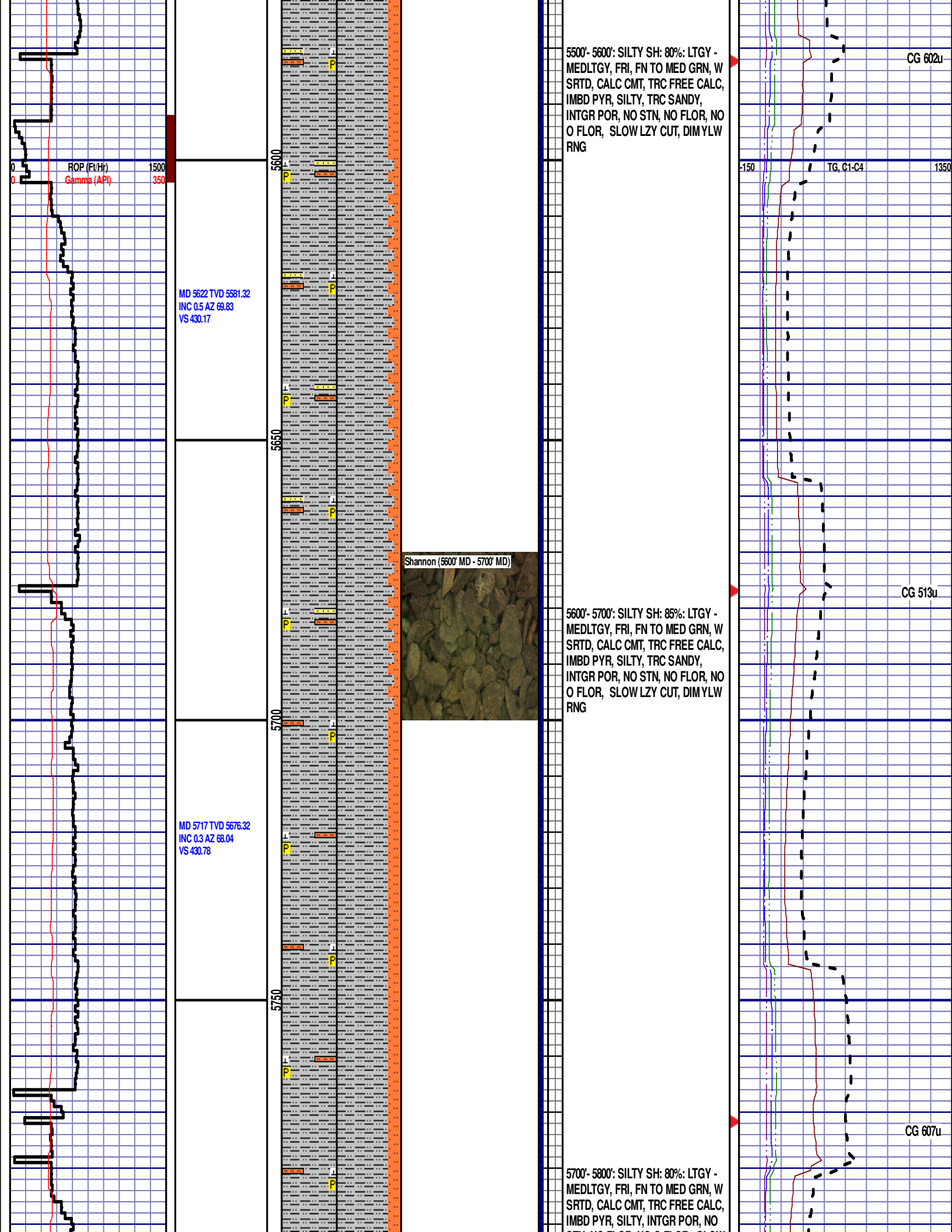
CG 116u











STN, NO FLOR, NO O FLOR, SLOW
LZY CUT, DIM YLW RNG

ROP (Ft/Hr)
Gamma (API)

MD 5811 TVD 5770.32
INC 0.66 AZ 208.7
VS 430.77

MD 5906 TVD 5865.31
INC 1.01 AZ 230.7
VS 429.9

MD 6001 TVD 5960.3
INC 0.25 AZ 284.69
VS 429.07

Shannon (5900' MD - 6000' MD)

5800'-5900': SILTY SH: 90%: LTGY -
MEDLTGY, FRI, FN TO MED GRN, W
SRTD, CALC CMT, TRC FREE CALC,
IMBD PYR, SILTY, INTGR POR, NO
STN, NO FLOR, NO O FLOR, SLOW
LZY CUT, DIM YLW RNG

5900'-6000': SILTY SH: 80%: LTGY -
MEDLTGY, FRI, FN TO MED GRN, W
SRTD, CALC CMT, TRC FREE CALC,
IMBD PYR, SILTY, INTGR POR, NO
STN, NO FLOR, NO O FLOR, SLOW
LZY CUT, DIM YLW RNG

TG, C1-C4

CG 544u

CG 1128u

STN, NO FLOR, NO O FLOR, SLOW
LZY CUT, DIM YLW RNG

MD 5811 TVD 5770.32
INC 0.66 AZ 208.7
VS 430.77

MD 5906 TVD 5865.31
INC 1.01 AZ 230.7
VS 429.9

MD 6001 TVD 5960.3
INC 0.25 AZ 284.69
VS 429.07

5800'-5900': SILTY SH: 90%: LTGY -
MEDLTGY, FRI, FN TO MED GRN, W
SRTD, CALC CMT, TRC FREE CALC,
IMBD PYR, SILTY, INTGR POR, NO
STN, NO FLOR, NO O FLOR, SLOW
LZY CUT, DIM YLW RNG

5900'-5950': SILTY SH: 80%: LTGY -
MEDLTGY, FRI, FN TO MED GRN, W
SRTD, CALC CMT, TRC FREE CALC,
IMBD PYR, SILTY, INTGR POR, NO
STN, NO FLOR, NO O FLOR, SLOW
LZY CUT, DIM YLW RNG

5900' MD - 6000' MD

5900'-6000': SILTY SH: 80%: LTGY -
MEDLTGY, FRI, FN TO MED GRN, W
SRTD, CALC CMT, TRC FREE CALC,
IMBD PYR, SILTY, INTGR POR, NO
STN, NO FLOR, NO O FLOR, SLOW
LZY CUT, DIM YLW RNG

CG 544u

CG 1128u

TG, C1-C4

TG, C1-C4

STN, NO FLOR, NO O FLOR, SLOW
LZY CUT, DIM YLW RNG

MD 5811 TVD 5770.32
INC 0.66 AZ 208.7
VS 430.77

MD 5906 TVD 5865.31
INC 1.01 AZ 230.7
VS 429.9

MD 6001 TVD 5960.3
INC 0.25 AZ 284.69
VS 429.07

5800'-5900': SILTY SH: 90%: LTGY -
MEDLTGY, FRI, FN TO MED GRN, W
SRTD, CALC CMT, TRC FREE CALC,
IMBD PYR, SILTY, INTGR POR, NO
STN, NO FLOR, NO O FLOR, SLOW
LZY CUT, DIM YLW RNG

5900'-5950': SILTY SH: 80%: LTGY -
MEDLTGY, FRI, FN TO MED GRN, W
SRTD, CALC CMT, TRC FREE CALC,
IMBD PYR, SILTY, INTGR POR, NO
STN, NO FLOR, NO O FLOR, SLOW
LZY CUT, DIM YLW RNG

5900' MD - 6000' MD

5900'-6000': SILTY SH: 80%: LTGY -
MEDLTGY, FRI, FN TO MED GRN, W
SRTD, CALC CMT, TRC FREE CALC,
IMBD PYR, SILTY, INTGR POR, NO
STN, NO FLOR, NO O FLOR, SLOW
LZY CUT, DIM YLW RNG

CG 544u

CG 1128u

TG, C1-C4

TG, C1-C4

STN, NO FLOR, NO O FLOR, SLOW
LZY CUT, DIM YLW RNG

MD 5811 TVD 5770.32
INC 0.66 AZ 208.7
VS 430.77

MD 5906 TVD 5865.31
INC 1.01 AZ 230.7
VS 429.9

MD 6001 TVD 5960.3
INC 0.25 AZ 284.69
VS 429.07

Shannon (5900' MD - 6000' MD)

5800' - 5900': SILTY SH: 90%: LTGY -
MEDTGY, FRI, FN TO MED GRN, W
SRTD, CALC CMT, TRC FREE CALC,
IMBD PYR, SILTY, INTGR POR, NO
STN, NO FLOR, NO O FLOR, SLOW
LZY CUT, DIM YLW RNG

5900' - 6000': SILTY SH: 80%: LTGY -
MEDTGY, FRI, FN TO MED GRN, W
SRTD, CALC CMT, TRC FREE CALC,
IMBD PYR, SILTY, INTGR POR, NO
STN, NO FLOR, NO O FLOR, SLOW
LZY CUT, DIM YLW RNG

CG 544u

CG 1128u

TG, C1-C4

TG, C1-C4

STN, NO FLOR, NO O FLOR, SLOW
LZY CUT, DIM YLW RNG

MD 5811 TVD 5770.32
INC 0.66 AZ 208.7
VS 430.77

MD 5906 TVD 5865.31
INC 1.01 AZ 230.7
VS 429.9

MD 6001 TVD 5960.3
INC 0.25 AZ 284.69
VS 429.07

Shannon (5900' MD - 6000' MD)

5800' - 5900': SILTY SH: 90%: LTGY -
MEDTGY, FRI, FN TO MED GRN, W
SRTD, CALC CMT, TRC FREE CALC,
IMBD PYR, SILTY, INTGR POR, NO
STN, NO FLOR, NO O FLOR, SLOW
LZY CUT, DIM YLW RNG

5900' - 6000': SILTY SH: 80%: LTGY -
MEDTGY, FRI, FN TO MED GRN, W
SRTD, CALC CMT, TRC FREE CALC,
IMBD PYR, SILTY, INTGR POR, NO
STN, NO FLOR, NO O FLOR, SLOW
LZY CUT, DIM YLW RNG

CG 544u

CG 1128u

TG, C1-C4

TG, C1-C4

STN, NO FLOR, NO O FLOR, SLOW LZY CUT, DIM YLW RNG

MD 5811 TVD 5770.32
INC 0.66 AZ 208.7
VS 430.77

MD 5906 TVD 5865.31
INC 1.01 AZ 230.7
VS 429.9

MD 6001 TVD 5960.3
INC 0.25 AZ 284.69
VS 429.07

5800'-5900': SILTY SH: 90%: LTGY - MEDLTGY, FRI, FN TO MED GRN, W SRTD, CALC CMT, TRC FREE CALC, IMBD PYR, SILTY, INTGR POR, NO STN, NO FLOR, NO O FLOR, SLOW LZY CUT, DIM YLW RNG

5900'-5950': SILTY SH: 80%: LTGY - MEDLTGY, FRI, FN TO MED GRN, W SRTD, CALC CMT, TRC FREE CALC, IMBD PYR, SILTY, INTGR POR, NO STN, NO FLOR, NO O FLOR, SLOW LZY CUT, DIM YLW RNG

5900'-6000': SILTY SH: 80%: LTGY - MEDLTGY, FRI, FN TO MED GRN, W SRTD, CALC CMT, TRC FREE CALC, IMBD PYR, SILTY, INTGR POR, NO STN, NO FLOR, NO O FLOR, SLOW LZY CUT, DIM YLW RNG

Shannon (5900' MD - 6000' MD)

CG 544u

CG 1128u

TG, C1-C4

TG, C1-C4

Shannon (5900' MD - 6000' MD)

This photomicrograph shows a dense, granular texture with small, dark, irregular grains. The grains are closely packed and vary in size, with some appearing more rounded and others more angular. The overall appearance is that of a fine-grained sedimentary rock.

STN, NO FLOR, NO O FLOR, SLOW LZ CUT, DIM YLW RNG

MD 5811 TVD 5770.32
INC 0.66 AZ 208.7
VS 430.77

MD 5906 TVD 5865.31
INC 1.01 AZ 230.7
VS 429.9

MD 6001 TVD 5960.3
INC 0.25 AZ 284.69
VS 429.07

Shannon (5900' MD - 6000' MD)

5800' - 5900': SILTY SH: 90%: LTGY - MEDLTGY, FRI, FN TO MED GRN, W SRTD, CALC CMT, TRC FREE CALC, IMBD PYR, SILTY, INTGR POR, NO STN, NO FLOR, NO O FLOR, SLOW LZ CUT, DIM YLW RNG

5900' - 6000': SILTY SH: 80%: LTGY - MEDLTGY, FRI, FN TO MED GRN, W SRTD, CALC CMT, TRC FREE CALC, IMBD PYR, SILTY, INTGR POR, NO STN, NO FLOR, NO O FLOR, SLOW LZ CUT, DIM YLW RNG

CG 544u

CG 1128u

TG, C1-C4

TG, C1-C4

STN, NO FLOR, NO O FLOR, SLOW
LZY CUT, DIM YLW RNG

MD 5811 TVD 5770.32
INC 0.66 AZ 208.7
VS 430.77

MD 5906 TVD 5865.31
INC 1.01 AZ 230.7
VS 429.9

MD 6001 TVD 5960.3
INC 0.25 AZ 284.69
VS 429.07

Shannon (5900' MD - 6000' MD)

5800' - 5900': SILTY SH: 90%: LTGY -
MEDLTGY, FRI, FN TO MED GRN, W
SRTD, CALC CMT, TRC FREE CALC,
IMBD PYR, SILTY, INTGR POR, NO
STN, NO FLOR, NO O FLOR, SLOW
LZY CUT, DIM YLW RNG

5900' - 6000': SILTY SH: 80%: LTGY -
MEDLTGY, FRI, FN TO MED GRN, W
SRTD, CALC CMT, TRC FREE CALC,
IMBD PYR, SILTY, INTGR POR, NO
STN, NO FLOR, NO O FLOR, SLOW
LZY CUT, DIM YLW RNG

CG 544u

CG 1128u

TG, C1-C4

STN, NO FLOR, NO O FLOR, SLOW LZY CUT, DIM YLW RNG

MD 5811 TVD 5770.32
INC 0.66 AZ 208.7
VS 430.77

MD 5906 TVD 5865.31
INC 1.01 AZ 230.7
VS 429.9

MD 6001 TVD 5960.3
INC 0.25 AZ 284.69
VS 429.07

5800'-5900': SILTY SH: 90%: LTGY - MEDLTGY, FRI, FN TO MED GRN, W SRTD, CALC CMT, TRC FREE CALC, IMBD PYR, SILTY, INTGR POR, NO STN, NO FLOR, NO O FLOR, SLOW LZY CUT, DIM YLW RNG

5900'-5950': SILTY SH: 80%: LTGY - MEDLTGY, FRI, FN TO MED GRN, W SRTD, CALC CMT, TRC FREE CALC, IMBD PYR, SILTY, INTGR POR, NO STN, NO FLOR, NO O FLOR, SLOW LZY CUT, DIM YLW RNG

5900'-6000': SILTY SH: 80%: LTGY - MEDLTGY, FRI, FN TO MED GRN, W SRTD, CALC CMT, TRC FREE CALC, IMBD PYR, SILTY, INTGR POR, NO STN, NO FLOR, NO O FLOR, SLOW LZY CUT, DIM YLW RNG

Shannon (5900' MD - 6000' MD)

CG 544u

CG 1128u

TG, C1-C4

TG, C1-C4

Well: 130-115-01
Section: 130-115-01
Depth (ft): 5800 to 6000
Gamma (API): 1500 to 350
Resistivity (ohm-ft): 150 to 1350

**MD 5811 TVD 5770.32
 INC 0.66 AZ 208.7
 VS 430.77**

**MD 5906 TVD 5865.31
 INC 1.01 AZ 230.7
 VS 429.9**

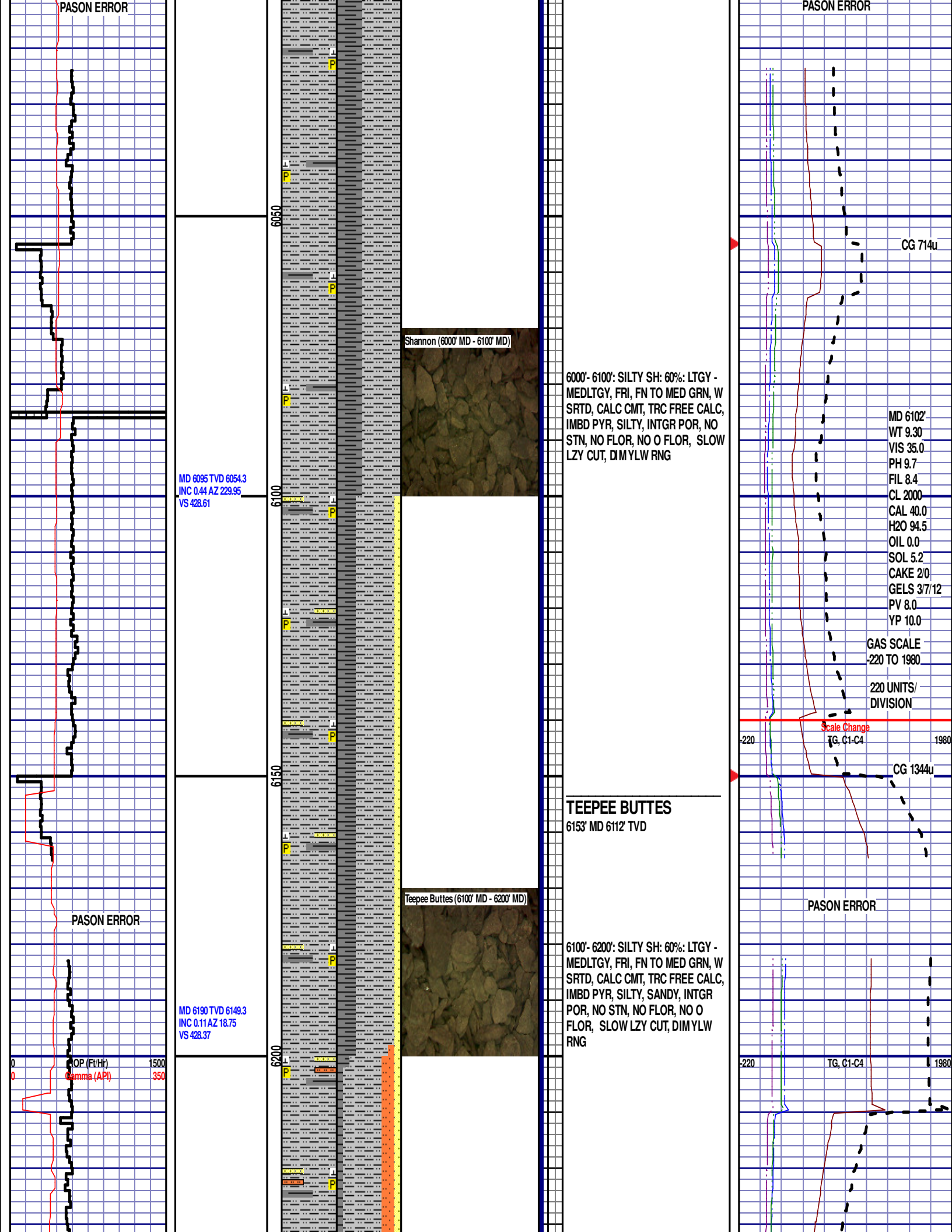
**MD 6001 TVD 5960.3
 INC 0.25 AZ 284.69
 VS 429.07**

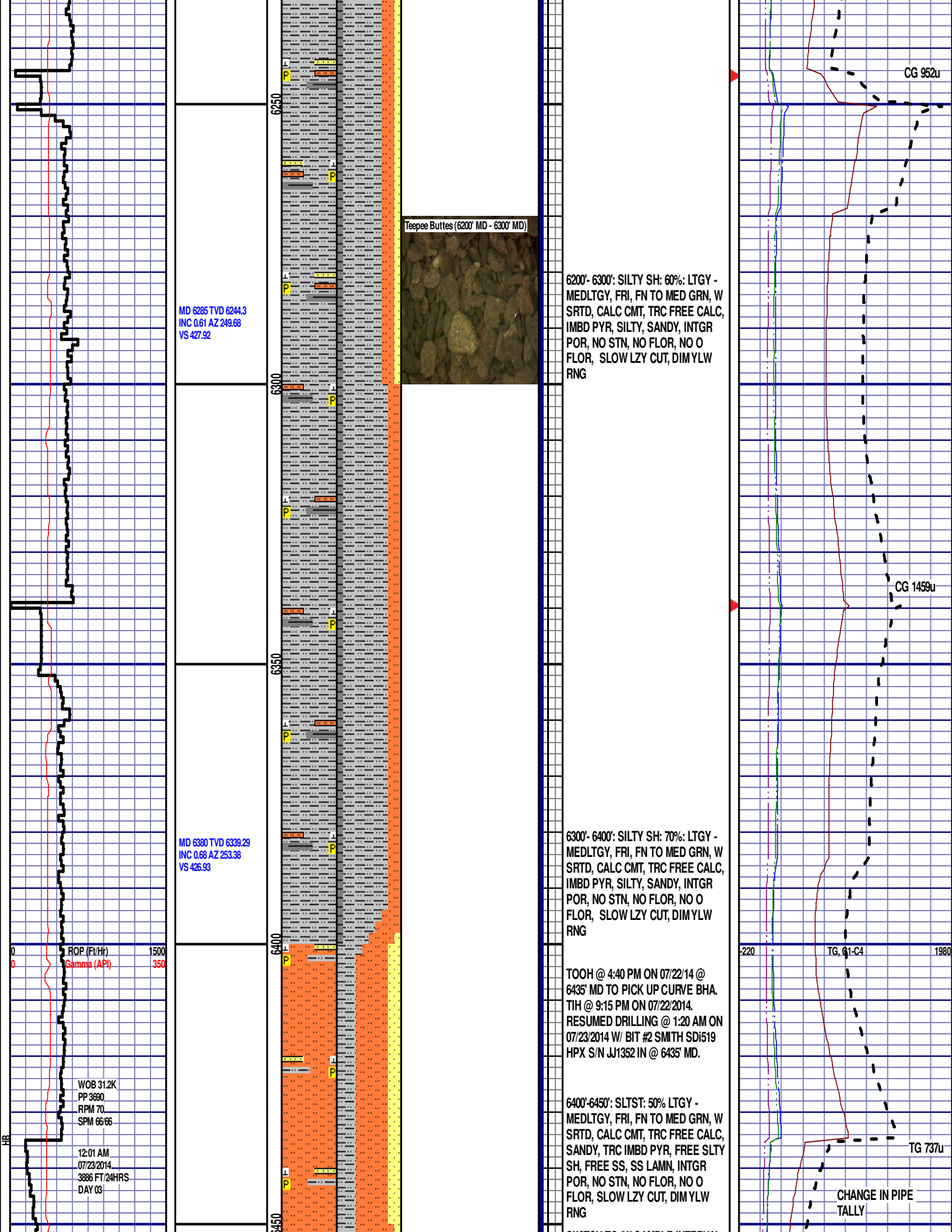
Shannon (5900' MD - 6000' MD)

5800' - 5900': SILTY SH: 90%: LTGY - MEDLTGY, FRI, FN TO MED GRN, W SRTD, CALC CMT, TRC FREE CALC, IMBD PYR, SILTY, INTGR POR, NO STN, NO FLOR, NO O FLOR, SLOW LZ Y CUT, DIM YLW RNG

5900' - 6000': SILTY SH: 80%: LTGY - MEDLTGY, FRI, FN TO MED GRN, W SRTD, CALC CMT, TRC FREE CALC, IMBD PYR, SILTY, INTGR POR, NO STN, NO FLOR, NO O FLOR, SLOW LZ Y CUT, DIM YLW RNG

CG 544u
CG 1128u





MD 6285 TVD 6244.3
INC 0.61 AZ 249.68
VS 427.92

MD 6380 TVD 6339.29
INC 0.68 AZ 253.38
VS 426.93

Teepee Buttes (6200' MD - 6300' MD)

6200'- 6300': SILTY SH: 60%: LTGY -
MEDLTGY, FRI, FN TO MED GRN, W
SRTD, CALC CMT, TRC FREE CALC,
IMBD PYR, SILTY, SANDY, INTGR
POR, NO STN, NO FLOR, NO O
FLOR, SLOW LZY CUT, DIM YLW
RNG

6300'- 6400': SILTY SH: 70%: LTGY -
MEDLTGY, FRI, FN TO MED GRN, W
SRTD, CALC CMT, TRC FREE CALC,
IMBD PYR, SILTY, SANDY, INTGR
POR, NO STN, NO FLOR, NO O
FLOR, SLOW LZY CUT, DIM YLW
RNG

TOOH @ 4:40 PM ON 07/22/14 @
6435' MD TO PICK UP CURVE BHA.
TIH @ 9:15 PM ON 07/22/2014.
RESUMED DRILLING @ 1:20 AM ON
07/23/2014 W/ BIT #2 SMITH SDi519
HPX S/N JJ1352 IN @ 6435' MD.

6400'-6450': SLTST: 50% LTGY -
MEDLTGY, FRI, FN TO MED GRN, W
SRTD, CALC CMT, TRC FREE CALC,
SANDY, TRC IMBD PYR, FREE SLTY
SH, FREE SS, SS LAMN, INTGR
POR, NO STN, NO FLOR, NO O
FLOR, SLOW LZY CUT, DIM YLW
RNG

CHANGE IN PIPE
TALLY

SWITCH TO 30' SAMPLE INTERVAL

MD 6474 TVD 6433.28
INC 0.89 AZ 273.24
VS 425.67

6450'-6480': SLTST: 55% LTGY -
MEDLTGY, FRI, FN TO MED GRN, W
SRTD, CALC CMT, TRC FREE CALC,
SANDY, TRC IMBD PYR, FREE SLTY
SH, SS LAMN, INTGR POR, NO STN,
NO FLOR, NO O FLOR, SLOW LZY
CUT, DIM YLW RNG

6480'-6510': SLTST: 60% LTGY -
MEDLTGY, FRI, FN TO MED GRN, W
SRTD, CALC CMT, TRC FREE CALC,
SANDY, TRC IMBD PYR, FREE SLTY
SH, SS LAMN, INTGR POR, NO STN,
NO FLOR, NO O FLOR, SLOW LZY
CUT, DIM YLW RNG

6510'-6540': SILTY SH: 50%: LTGY -
MEDLTGY, FRI, FN TO MED GRN, W
SRTD, CALC CMT, TRC FREE CALC,
IMBD PYR, SILTY, SANDY, INTGR
POR, NO STN, NO FLOR, NO O
FLOR, SLOW LZY CUT, DIM YLW
RNG

CG 614u

6540'-6570': SILTY SH: 50%: LTGY -
MEDLTGY, FRI, FN TO MED GRN, W
SRTD, CALC CMT, TRC FREE CALC,
IMBD PYR, SILTY, SANDY, INTGR
POR, NO STN, NO FLOR, NO O
FLOR, SLOW LZY CUT, DIM YLW
RNG

MD 6569 TVD 6528.11
INC 6.35 AZ 77.64
VS 430.02

Teepee Buttes (6570' MD - 6600' MD)

6570'-6600': SILTY SH: 60%: LTGY -
MEDLTGY, FRI, FN TO MED GRN, W
SRTD, CALC CMT, IMBD PYR, FREE
SH, SILTY, SS LAMN, INTGR POR,
NO STN, NO FLOR, NO O FLOR,
IMMED STRMG CUT, DIM YLW RNG

6600'-6630': SILTY SH: 55%: LTGY -
MEDLTGY, FRI, FN TO MED GRN, W
SRTD, CALC CMT, IMBD PYR, FREE
SH, SILTY, SS LAMN, INTGR POR,
NO STN, NO FLOR, NO O FLOR,
IMMED STRMG CUT, DIM YLW RNG

CG 1104u

6630'-6660': SILTY SH: 60%: LTGY -
MEDLTGY, FRI, FN TO MED GRN, W
SRTD, CALC CMT, IMBD PYR, FREE
SH, SILTY, SS LAMN, INTGR POR,
NO STN, NO FLOR, NO O FLOR,
IMMED STRMG CUT, DIM YLW RNG

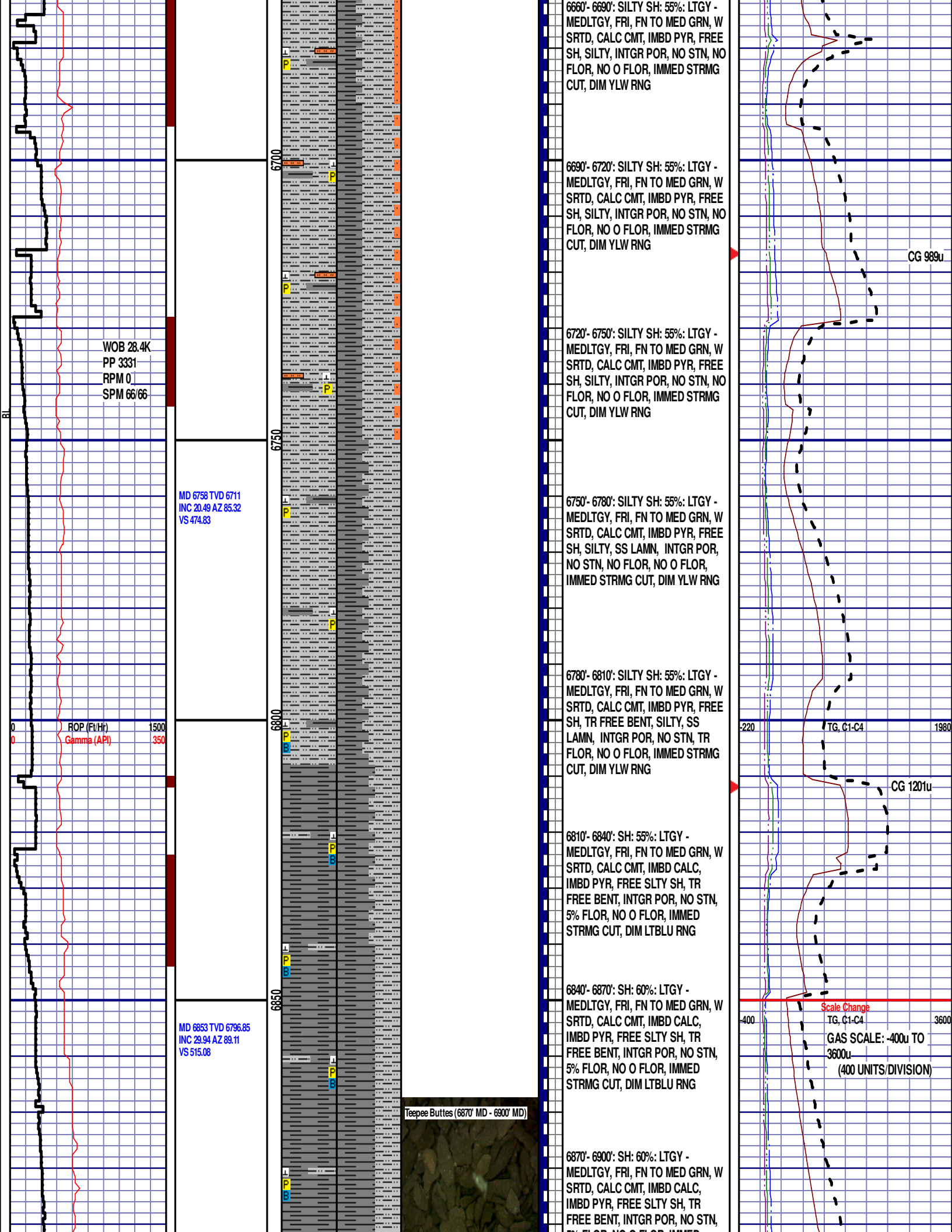
MD 6628'
WT 10.30
VIS 36.0
PH 9.3
FIL 9.4
CL 2000
CAL 60.0
H2O 90.3
OIL 0.0
SOL 9.4
CAKE 2/0
GELS
4/12/17
PV 10.0
YP 10.0

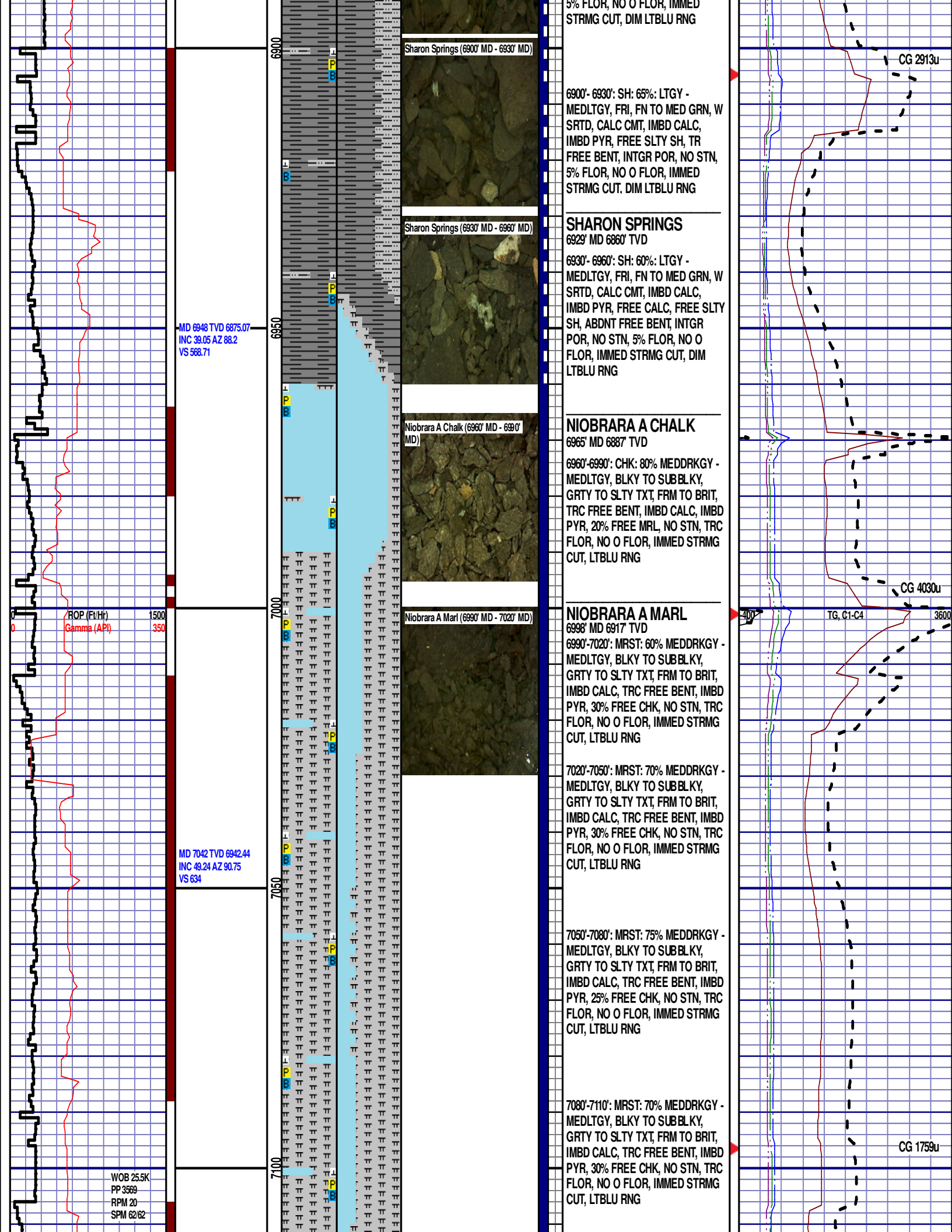
MD 6664 TVD 6621.43
INC 14.72 AZ 78.99
VS 446.86

ROP (Ft/Hr)
Gamma (API)

1500
350

-220 TG, C1-C4 1980





5% FLOR, NO O FLOR, IMMED STRMG CUT, DIM LTBLU RNG

Sharon Springs (6900' MD - 6930' MD)

6900'- 6930': SH: 65%: LTGY - MEDLTGY, FRI, FN TO MED GRN, W SRTD, CALC CMT, IMBD CALC, IMBD PYR, FREE SLTY SH, TR FREE BENT, INTGR POR, NO STN, 5% FLOR, NO O FLOR, IMMED STRMG CUT, DIM LTBLU RNG

SHARON SPRINGS

6929' MD 6860' TVD

6930'- 6960': SH: 60%: LTGY - MEDLTGY, FRI, FN TO MED GRN, W SRTD, CALC CMT, IMBD CALC, IMBD PYR, FREE CALC, FREE SLTY SH, ABDNT FREE BENT, INTGR POR, NO STN, 5% FLOR, NO O FLOR, IMMED STRMG CUT, DIM LTBLU RNG

Sharon Springs (6930' MD - 6960' MD)

Niobrara A Chalk (6960' MD - 6990' MD)

NIOBARARA A CHALK

6965' MD 6887' TVD

6960'-6990': CHK: 80% MEDDRKGY - MEDLTGY, BLKY TO SUBBLKY, GR TY TO SLTY TXT, FRM TO BRIT, TRC FREE BENT, IMBD CALC, IMBD PYR, 20% FREE MRL, NO STN, TRC FLOR, NO O FLOR, IMMED STRMG CUT, LTBLU RNG

Niobrara A Marl (6990' MD - 7020' MD)

NIOBARARA A MARL

6998' MD 6917' TVD

6990'-7020': MRST: 60% MEDDRKGY - MEDLTGY, BLKY TO SUBBLKY, GR TY TO SLTY TXT, FRM TO BRIT, IMBD CALC, TRC FREE BENT, IMBD PYR, 30% FREE CHK, NO STN, TRC FLOR, NO O FLOR, IMMED STRMG CUT, LTBLU RNG

7020'-7050': MRST: 70% MEDDRKGY - MEDLTGY, BLKY TO SUBBLKY, GR TY TO SLTY TXT, FRM TO BRIT, IMBD CALC, TRC FREE BENT, IMBD PYR, 30% FREE CHK, NO STN, TRC FLOR, NO O FLOR, IMMED STRMG CUT, LTBLU RNG

7050'-7080': MRST: 75% MEDDRKGY - MEDLTGY, BLKY TO SUBBLKY, GR TY TO SLTY TXT, FRM TO BRIT, IMBD CALC, TRC FREE BENT, IMBD PYR, 25% FREE CHK, NO STN, TRC FLOR, NO O FLOR, IMMED STRMG CUT, LTBLU RNG

7080'-7110': MRST: 70% MEDDRKGY - MEDLTGY, BLKY TO SUBBLKY, GR TY TO SLTY TXT, FRM TO BRIT, IMBD CALC, TRC FREE BENT, IMBD PYR, 30% FREE CHK, NO STN, TRC FLOR, NO O FLOR, IMMED STRMG CUT, LTBLU RNG

MD 6948 TVD 6875.07
INC 39.05 AZ 88.2
VS 568.71

ROP (Ft/Hr)
Gamma (API)

MD 7042 TVD 6942.44
INC 49.24 AZ 90.75
VS 634

WOB 25.5K
PP 3569
RPM 20
SPM 62/62

CG 2913u

CG 4030u

CG 1759u

