

**WPX ENERGY ROCKY MOUNTAIN LLC-EBUS**

PA 44-6

Aztec 1000

**Post Job Summary**  
**Cement Production Casing**

Date Prepared: 07/09/2014  
Job Date: 07/01/2014

Submitted by: Kory Hugentobler – Grand Junction Cement Engineer

*The Road to Excellence Starts with Safety*

Sold To #: 300721	Ship To #: 3476000	Quote #: 0021886524	Sales Order #: 0901468856							
Customer: WPX ENERGY ROCKY MOUNTAIN LLC-EBUS		Customer Rep: JOSH GARIBAY								
Well Name: HICKS PA	Well #: 44-6	API/UWI #: 05-045-22409-00								
Field: PARACHUTE	City (SAP): PARACHUTE	County/Parish: GARFIELD	State: COLORADO							
Legal Description: SE SW-6-7S-95W-788FSL-2219FWL										
Contractor:		Rig/Platform Name/Num: AZTEC 1000								
Job BOM: 7523										
Well Type: DIRECTIONAL GAS										
Sales Person: HALAMERICA\HB50180		Srv Supervisor: Eric Carter								
Job										
Formation Name										
Formation Depth (MD)	Top	1046 FT.	Bottom 6654 FT.							
Form Type	BHST									
Job depth MD	6654ft	Job Depth TVD								
Water Depth		Wk Ht Above Floor	5 FT.							
Perforation Depth (MD)	From	To								
Well Data										
Description	New / Used	Size in	ID in	Weight lbm/ft	Thread	Grade	Top MD ft	Bottom MD ft	Top TVD ft	Bottom TVD ft
Casing		9.625	9.001	32.3			0	1046		0
Casing		4.5	4	11.6			0	6654		0
Open Hole Section			8.75				1046	6654	0	0
Tools and Accessories										
Type	Size in	Qty	Make	Depth ft	Type	Size in	Qty	Make		
Guide Shoe					Top Plug	4.5	1	HES		
Float Shoe					Bottom Plug					
Float Collar					SSR plug set					
Insert Float					Plug Container	4.5	1	HES		
Stage Tool					Centralizers					
Miscellaneous Materials										
Gelling Agt	Conc	Surfactant	Conc	Acid Type	Qty	Conc				
Treatment Fld	Conc	Inhibitor	Conc	Sand Type	Size	Qty				
Fluid Data										
Stage/Plug #: 1										
Fluid #	Stage Type	Fluid Name	Qty	Qty UoM	Mixing Density lbm/gal	Yield ft3/sack	Mix Fluid Gal	Rate bbl/min	Total Mix Fluid Gal	
1	12.3 lb/gal Tuned Spacer III	Tuned Spacer III	40	bbl	12.3	2.87		4		
34.90 gal/bbl		FRESH WATER								
195.50 lbm/bbl		BARITE, BULK (100003681)								

Fluid #	Stage Type	Fluid Name	Qty	Qty UoM	Mixing Density lbm/gal	Yield ft3/sack	Mix Fluid Gal	Rate bbl/min	Total Mix Fluid Gal
2	HalCem GJ1	HALCEM (TM) SYSTEM	315	sack	12.7	1.81	9.64	7	
9.67 Gal		FRESH WATER							
Fluid #	Stage Type	Fluid Name	Qty	Qty UoM	Mixing Density lbm/gal	Yield ft3/sack	Mix Fluid Gal	Rate bbl/min	Total Mix Fluid Gal
3	HalCem GJ2	HALCEM (TM) SYSTEM	720	sack	13.5	1.44	6.43	6.5	
6.57 Gal		FRESH WATER							
Fluid #	Stage Type	Fluid Name	Qty	Qty UoM	Mixing Density lbm/gal	Yield ft3/sack	Mix Fluid Gal	Rate bbl/min	Total Mix Fluid Gal
4	Fresh Water Displacement	Fresh Water Displacement	102.5	bbl	8.34			9	
Cement Left In Pipe		Amount	44.23 ft		Reason		Shoe Joint		
Comment									

# HALLIBURTON

WPX ENERGY ROCKY MOUNTAIN LLC-EBUS  
901468856  
901468856

## 3.5 Job Event Log

Type	Seq. No.	Graph Label	Date	Time	Source	DH Density (ppg)	PS Pump Press (psi)	Comb Pump Rate (bbl/min)	Pump Stg Tot (bbl)	Comment
Event	1	Arrive at Location from Other Job or Site	7/1/2014	06:30	USER					RIG CIRCULATING
Event	2	Assessment Of Location Safety Meeting	7/1/2014	07:00	USER					ATTENDED BY ALL HES CREW
Event	3	Other	7/1/2014	07:10	USER					SPOT EQUIPMENT
Event	4	Pre-Rig Up Safety Meeting	7/1/2014	07:50	USER					ATTENDED BY ALL HES CREW
Event	5	Rig-Up Equipment	7/1/2014	08:00	USER					
Event	6	Pre-Job Safety Meeting	7/1/2014	09:20	USER					ATTENDED BY ALL HES CREW, RIG CREW AND COMPANY REP
Event	7	Start Job	7/1/2014	09:44:41	COM5					TP 6654', TD 6654', MW 11.8 PPG, CASING 4.5", 11.6#, N-80, SJ 44.23', HOLE 8.75", SURFACE CASING 9.625", 32.3# SET AT 1046', RIG CIRCULATED FOR 3.5 HR'S PRIOR TO JOB AT 11.5 BPM
Event	8	Other	7/1/2014	09:46:06	USER	8.34	130	2	2	FILL LINES
Event	9	Test Lines	7/1/2014	09:47:48	COM5					PRESSURED UP TO 5300 PSI, PRESSURE HELD
Event	10	Pump Spacer 1	7/1/2014	09:58:48	COM5	12.3	270	4	40	TUNED SPACER III MIXED AT 12.3 PPG
Event	11	Pump Lead Cement	7/1/2014	10:10:16	COM5	12.7	620	7	101.5	315 SKS HALCEM MIXED AT 12.7 PPG, 1.81 YIELD, 9.64 GL/SK
Event	12	Pump Tail Cement	7/1/2014	10:26:45	COM5	13.5	750	6.5	184.7	720 SKS HALCEM MIXED AT 13.5 PPG, 1.44 YIELD, 6.34 GL/SK
Event	13	Shutdown	7/1/2014	10:54:24	USER					
Event	14	Clean Lines	7/1/2014	10:55:14	USER					CLEANED LINES TO CATCH TANK
Event	15	Drop Top Plug	7/1/2014	10:58:43	USER					PLUG LAUNCHED
Event	16	Pump Displacement	7/1/2014	10:58:57	USER	8.4	1450	10	45	FRESH WATER WITH KCL, BE-6 AND MMCR
Event	17	Slow Rate	7/1/2014	11:03:48	USER					HES SLOWED RATE DUE TO ISSUES WITH DECK MOTOR
Event	18	Resume	7/1/2014	11:04:43	USER	8.4	1650	8	47.5	
Event	19	Slow Rate	7/1/2014	11:10:10	USER	8.4	1440	4	22.1	
Event	20	Comment	7/1/2014	11:12:33	USER					DID NOT LAND PLUG AT CALCULATED DISPLACEMENT, REP REQUESTED TO CONTINUE DISPLACEMENT

iCem<sup>®</sup> Service  
Created: Tuesday, July 01, 2014

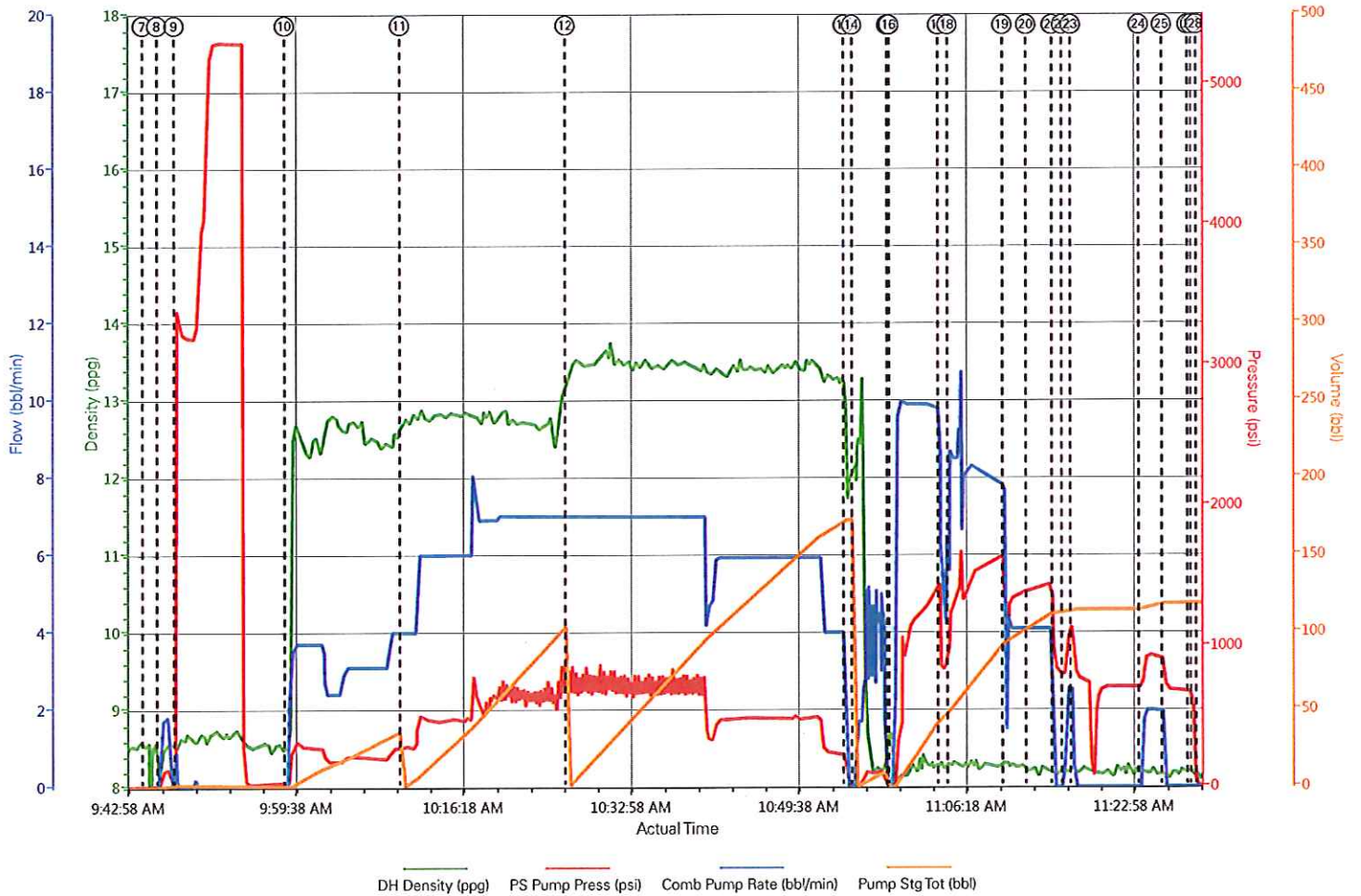
# HALLIBURTON

WPX ENERGY ROCKY MOUNTAIN LLC-EBUS  
901468856  
901468856

Event	21	Shutdown	7/1/2014	11:15:05	USER					
Event	22	Resume	7/1/2014	11:16:05	USER	8.4	1200	3	2	REP REQUESTED TO RESUME DISPLACEMENT
Event	23	Shutdown	7/1/2014	11:16:58	USER					
Event	24	Resume	7/1/2014	11:23:44	USER	8.4	940	2	4	REP REQUESTED TO RESUME DISPLACEMENT, GAINED RETURNS TO SHAKERS
Event	25	Shutdown	7/1/2014	11:26:02	USER					
Event	26	Shut In Well	7/1/2014	11:28:36	USER					SHUTD IN WELL WITH 560 PSI
Event	27	Other	7/1/2014	11:28:57	USER					RELEASE PRESSURE OFF PUMPS AND LINES
Event	28	End Job	7/1/2014	11:29:26	USER					GAINED RETURNS LAST 4 BBLS PUMPED, PIPE RECIPROCATED DURING JOB, NO CEMENT TO SURFACE
Event	29	Post-Job Safety Meeting (Pre Rig-Down)	7/1/2014	11:35	USER					ATTENDED BY ALL HES CREW
Event	30	Rig-Down Equipment	7/1/2014	11:40	USER					
Event	31	Depart Location Safety Meeting	7/1/2014	12:20	USER					ATTENDED BY ALL HES CREW
Event	32	Crew Leave Location	7/1/2014	12:30	USER					THANK YOU FOR USING HALLIBURTON CEMENT, ERIC CARTER AND CREW.



# WPX - HICKS PA 44-6 - PRODUCTION



▼ HALLIBURTON | iCem® Service

Created: 2014-07-01 08:25:45, Version: 3.0.121

Edit

Customer: WPX ENERGY ROCKY MOUNTAIN LLC-  
EBUS

Job Date: 7/1/2014 8:53:44 AM

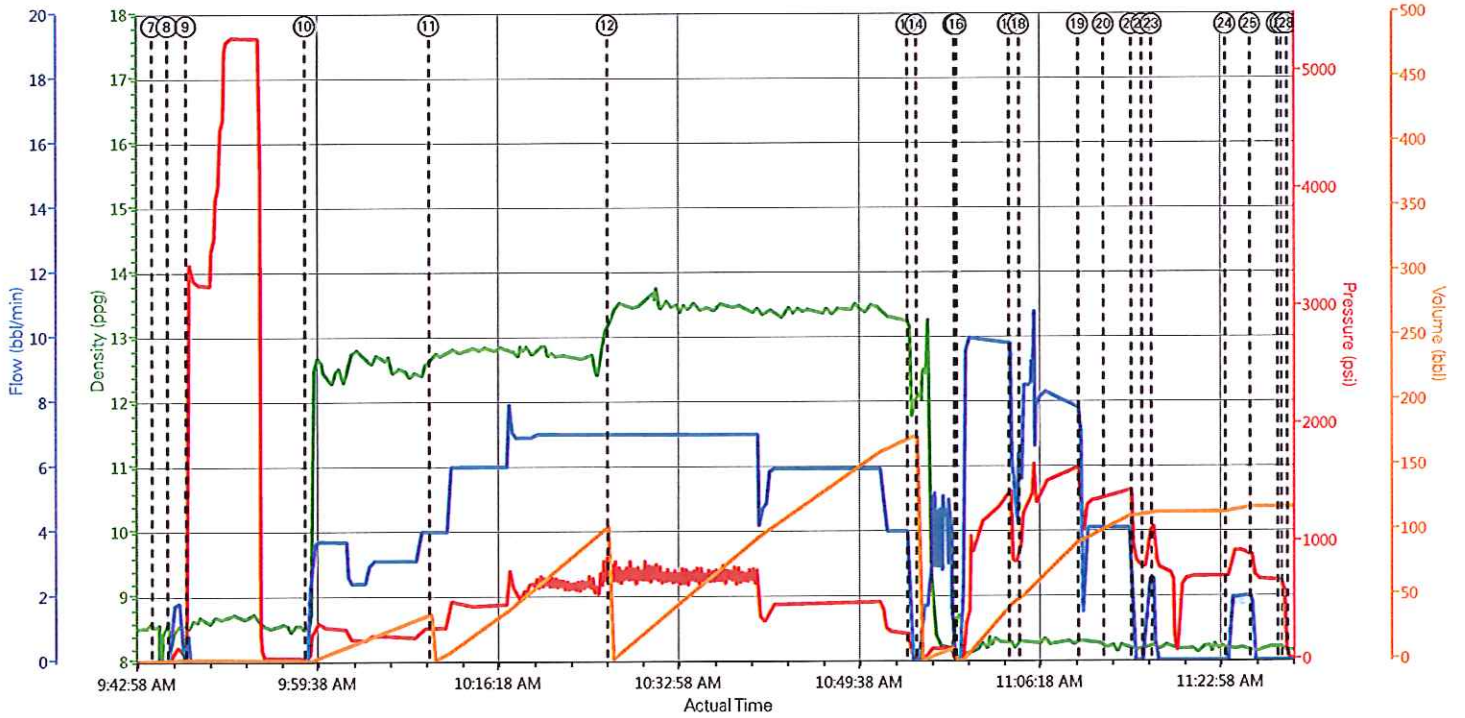
Well: HICKS PA 44-6

Representative: JOSH GARIBAY

Sales Order #: 901468856

ERIC CARTER: ANDREW SCHANZ/ELITE 6

# WPX - HICKS PA 44-6 - PRODUCTION



DH Density (ppg) PS Pump Press (psi) Comb Pump Rate (bbl/min) Pump Stg Tot (bbl)

① Arrive at Location from Other Job or Site 8.54;0;0,0	⑦ Start Job 8.51;0;0,0	⑬ Shutdown 11.93;97,0;172.7	⑳ Slow Rate 8.34;1316;3.8;93.8	25 Shutdown 8.23;778;0;118.7
② Assessment Of Location Safety Meeting 8.57;0;0,0	⑧ Other 8.32;14;0,0	⑭ Clean Lines 12.11;10;0,0	20 Comment 8.21;1399;4.1;103.1	26 Shut In Well 8.23;690;0;118.7
③ Other 8.54;0;0,0	⑨ Test Lines 8.6;3378;0;1.6	⑮ Drop Top Plug 8.68;0;0,0	21 Shutdown 8.1;906;0;112.6	27 Other 8.17;283;0;118.7
④ Pre-Rig Up Safety Meeting 8.54;0;0,0	⑩ Pump Spacer 18.53;26;0,0	⑯ Pump Displacement 8.73;0;0,0	22 Resume 8.24;802;0.5;112.6	28 End Job 8.11;11;0;118.7
⑤ Rig-Up Equipment 8.51;0;0,0	⑪ Pump Lead Cement 12.68;277;4;0.1	⑰ Slow Rate 8.32;866;4.8;44.2	23 Shutdown 8.24;1156;2.5;114.5	29 Post-Job Safety Meeting (Pre Rig-D
⑥ Pre-Job Safety Meeting 8.57;0;0,0	⑫ Pump Tail Cement 13.35;836;7;0.1	⑱ Resume 8.3;1213;8.5;49.2	24 Resume 8.18;722;0.7;114.6	30 Rig-Down Equipment 8.2;0;0;118.7

HALLIBURTON | iCem® Service

Created: 2014-07-01 08:25:45, Version: 3.0.121

Edit

Customer: WPX ENERGY ROCKY MOUNTAIN LLC-EBUS

Job Date: 7/1/2014 8:53:44 AM

Well: HICKS PA 44-6

Representative: JOSH GARIBAY

Sales Order #: 901468856

ERIC CARTER: ANDREW SCHANZ/ELITE 6

# HALLIBURTON

## Water Analysis Report

Company: WPX  
Submitted by: ERIC CARTER  
Attention: J.Trout  
Lease: AZTEC 1000  
Well #: HICKS PA 44-6

Date: 7/9/2014  
Date Rec.: 7/9/2014  
S.O.#: 901468856  
Job Type: PRODUCTION

Specific Gravity	<i>MAX</i>	<i>1</i>
pH	<i>8</i>	<i>7</i>
Potassium (K)	<i>5000</i>	<i>200 Mg / L</i>
Hrdness	<i>500</i>	<i>250 Mg / L</i>
Iron (FE2)	<i>300</i>	<i>0 Mg / L</i>
Chlorides (Cl)	<i>3000</i>	<i>0 Mg / L</i>
Sulfates (SO <sub>4</sub> )	<i>1500</i>	<i>&lt;200 Mg / L</i>
Temp	<i>40-80</i>	<i>60 Deg</i>
Total Dissolved Solids		<i>410 Mg / L</i>

Respectfully: ERIC CARTER

Title: CEMENTING SUPERVISOR

Location: Grand Junction, CO

NOTICE:

This report is limited to the described sample tested. Any person using or relying on this report agrees that Halliburton shall not be liable for any loss or damage whether due to act or omission resulting from such report or its use.



<b>Sales Order #:</b> 0901468856	<b>Line Item:</b> 10	<b>Survey Conducted Date:</b> 7/1/2014
<b>Customer:</b> WPX ENERGY ROCKY MOUNTAIN LLC-EBUS		<b>Job Type (BOM):</b> CMT PRODUCTION CASING BOM
<b>Customer Representative:</b>		<b>API / UWI: (leave blank if unknown)</b> 05-045-22409-00
<b>Well Name:</b> HICKS PA		<b>Well Number:</b> 0080606502
<b>Well Type:</b> DIRECTIONAL GAS	<b>Well Country:</b> USA	
<b>H2S Present:</b> No	<b>Well State:</b> COLORADO	<b>Well County:</b> GARFIELD

Dear Customer,

We hope that you were satisfied with the service quality of this job performed by Halliburton. It is the aim of our management and service personnel to deliver equipment and service of a standard unmatched in the service sector of the energy industry.

Please take the time to let us know if our performance met with your satisfaction. Please be as critical as possible to ensure we constantly improve our service. Your comments are of great value to us and are intended for the exclusive use of Halliburton.

### CUSTOMER SATISFACTION SURVEY

CATEGORY	CUSTOMER SATISFACTION RESPONSE	
Survey Conducted Date	The date the survey was conducted	7/1/2014
Survey Interviewer	The survey interviewer is the person who initiated the survey.	HX15491
Customer Participation	Did the customer participate in this survey? (Y/N)	No
Customer Representative	Enter the Customer representative name	
HSE	Was our HSE performance satisfactory? Circle Y or N	
Equipment	Were you satisfied with our Equipment? Circle Y or N	
Personnel	Were you satisfied with our people? Circle Y or N	
Customer Comment	Customer's Comment	

CUSTOMER SIGNATURE

<b>Sales Order #:</b> 0901468856	<b>Line Item:</b> 10	<b>Survey Conducted Date:</b> 7/1/2014
<b>Customer:</b> WPX ENERGY ROCKY MOUNTAIN LLC-EBUS		<b>Job Type (BOM):</b> CMT PRODUCTION CASING BOM
<b>Customer Representative:</b>		<b>API / UWI: (leave blank if unknown)</b> 05-045-22409-00
<b>Well Name:</b> HICKS PA		<b>Well Number:</b> 0080606502
<b>Well Type:</b> DIRECTIONAL GAS	<b>Well Country:</b> USA	
<b>H2S Present:</b> No	<b>Well State:</b> COLORADO	<b>Well County:</b> GARFIELD

### KEY PERFORMANCE INDICATORS

General	
<b>Survey Conducted Date</b> The date the survey was conducted	7/1/2014

Cementing KPI Survey	
<b>Type of Job</b> Select the type of job. (Cementing or Non-Cementing)	0
<b>Select the Maximum Deviation range for this Job</b> What is the highest deviation for the job you just completed? This may not be the maximum well deviation.	Deviated
<b>Total Operating Time (hours)</b> Total Operating Hours Including Rig-up, Pumping, Rig-down. Enter in decimal format.	5
<b>HSE Incident, Accident, Injury</b> HSE Incident, Accident, Injury. This should be recordable incidents only.	No
<b>Was the job purpose achieved?</b> Was the job delivered correctly as per customer agreed design?	Yes
<b>Operating Hours (Pumping Hours)</b> Total number of hours pumping fluid on this job. Enter in decimal format.	1.5
<b>Customer Non-Productive Rig Time (hrs)</b> Lost time due to Halliburton in the start, execution, or completion of an ordered service or product, or delays in a follow-on service. Enter in decimal format. 0 if none.	0
<b>Type of Rig Classification Job Was Performed</b> Type Of Rig (classification) Job Was Performed On	Drilling Rig (Portable)
<b>Number Of JSAs Performed</b> Number Of Jsas Performed	5
<b>Number of Unplanned Shutdowns</b> Unplanned shutdown is when injection stops for any period of time.	0
<b>Was this a Primary Cement Job (Yes / No)</b>	Yes

<b>Sales Order #:</b> 0901468856	<b>Line Item:</b> 10	<b>Survey Conducted Date:</b> 7/1/2014
<b>Customer:</b> WPX ENERGY ROCKY MOUNTAIN LLC-EBUS		<b>Job Type (BOM):</b> CMT PRODUCTION CASING BOM
<b>Customer Representative:</b>		<b>API / UWI: (leave blank if unknown)</b> 05-045-22409-00
<b>Well Name:</b> HICKS PA		<b>Well Number:</b> 0080606502
<b>Well Type:</b> DIRECTIONAL GAS	<b>Well Country:</b> USA	
<b>H2S Present:</b> No	<b>Well State:</b> COLORADO	<b>Well County:</b> GARFIELD

Primary Cement Job= Casing job, Liner job, or Tie-back job.	
<b>Did We Run Wiper Plugs?</b>	Top
Did We Run Top And Bottom Casing Wiper Plugs?	
<b>Mixing Density of Job Stayed in Designed Density Range (0-100%)</b>	95
Density Range defined as +/- .20 ppg. Calculation: Total BBLs cement mixed at designed density divided by total BBLs of cement multiplied by 100	
<b>Was Automated Density Control Used?</b>	Yes
Was Automated Density Control (ADC) Used ?	
<b>Pump Rate (percent) of Job Stayed At Designed Pump Rate</b>	95
Pump Rate range defined as +/- 1bbl/min. Calculation: Total BBLs of fluid pumped at the designed rate divided by Total BBLs of fluid pumped, multiplied by 100	
<b>Nbr of Remedial Sqz Jobs Rqd - Competition</b>	0
Number Of Remedial Squeeze Jobs Required After Primary Job Performed By Competition	
<b>Nbr of Remedial Plug Jobs Rqd - HES</b>	0
Number Of Remedial Plug Jobs Needed After Primary Plug Pumped By HES	
<b>Nbr of Remedial Sqz Jobs Rqd - HES</b>	0
Number Of Remedial Squeeze Jobs Required After Primary Job Performed By HES	